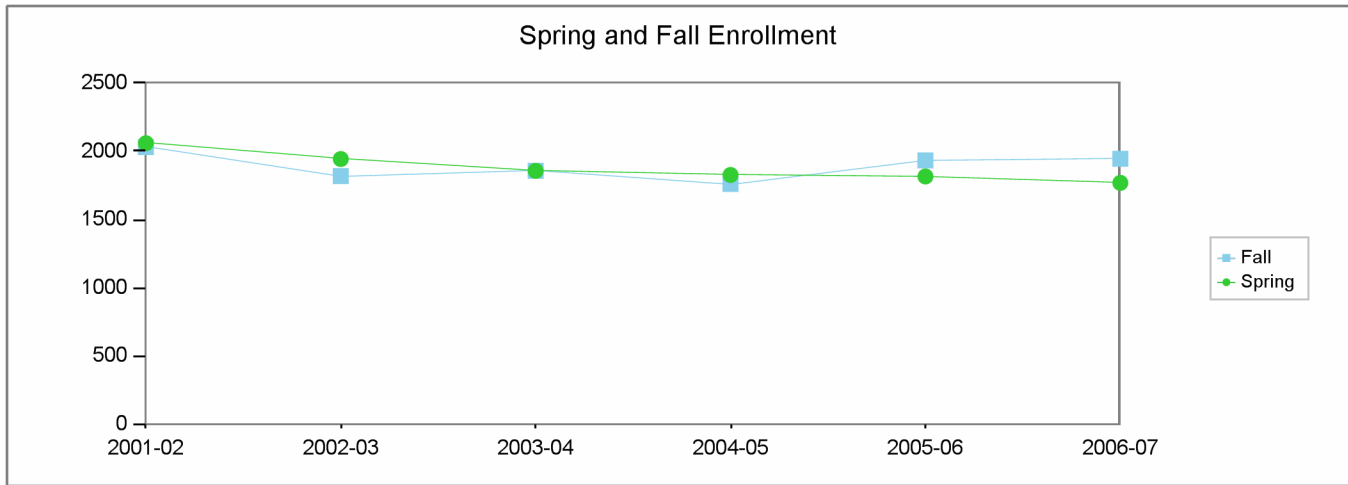


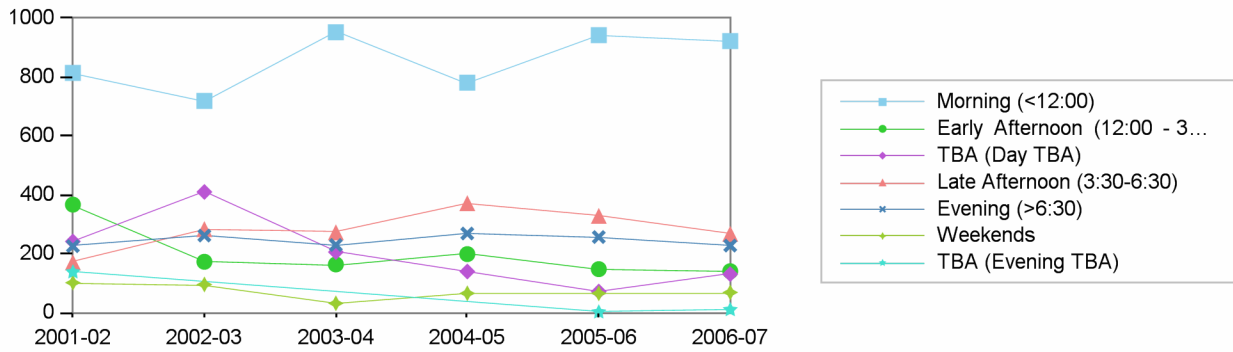
**Los Angeles City College  
Comprehensive Program Review 2008**

**Physical Education (Mens) Department  
Section IIa. Department Overview – Response to Demand: Enrollment**

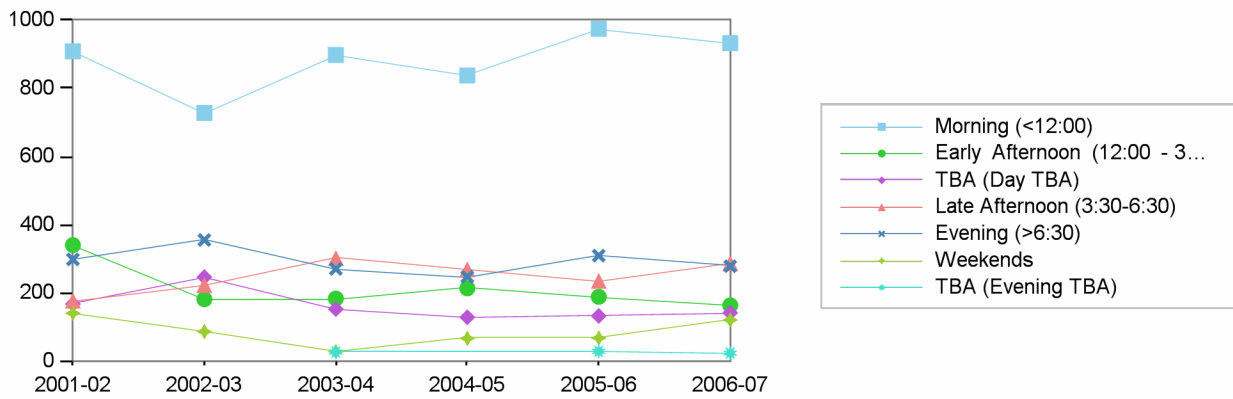


	2001-02	2002-03	2003-04	2004-05	2005-06	2006-07
Fall	2031	1819	1858	1761	1934	1945
Spring	2060	1944	1857	1827	1816	1769

### Spring Enrollment by Time of Day



### Fall Enrollment by Time of Day

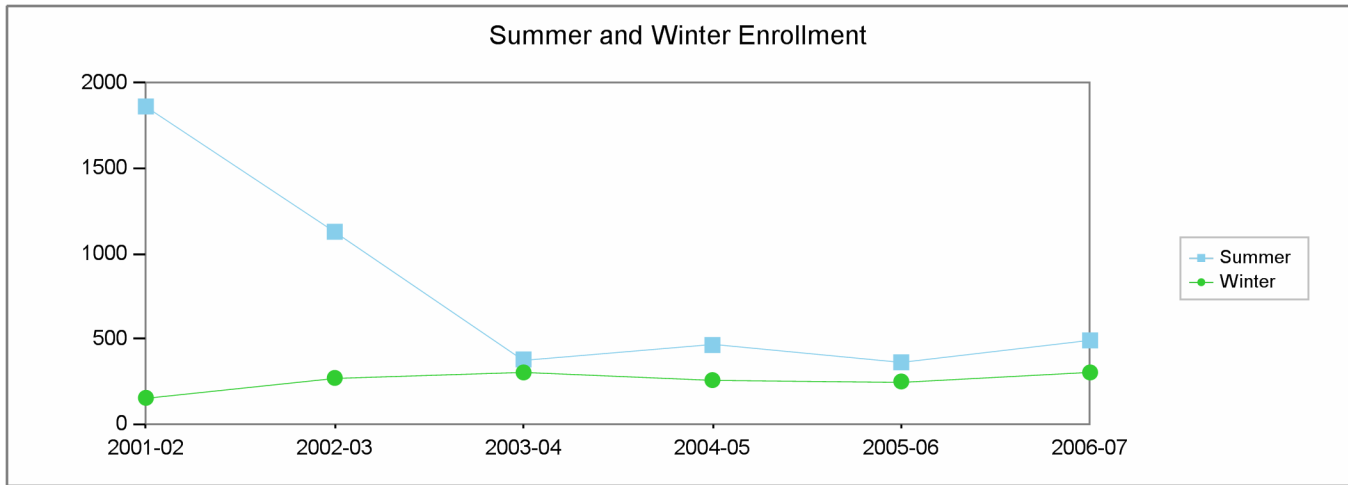


Morning (<12:00)    Early Afternoon (12:00 - 3:30)    TBA (Day TBA)    Late Afternoon (3:30-6:30)    Evening (>6:30)    Weekends    TBA (Evening TBA)

	Fall	Spring	Fall	Spring	Fall	Spring	Fall	Spring	Fall	Spring	Fall	Spring	Spring	Fall
2001-02	909	814	340	367	167	242	177	171	298	226	140	102	138	
2002-03	728	719	181	173	246	410	223	284	355	262	86	96		
2003-04	898	952	183	164	152	206	302	273	270	230	27	32		26
2004-05	838	781	213	199	128	140	269	372	247	269	66	66		
2005-06	975	942	188	148	132	72	235	329	309	257	67	66	2	28
2006-07	933	922	163	141	141	131	287	268	278	228	120	69	10	23

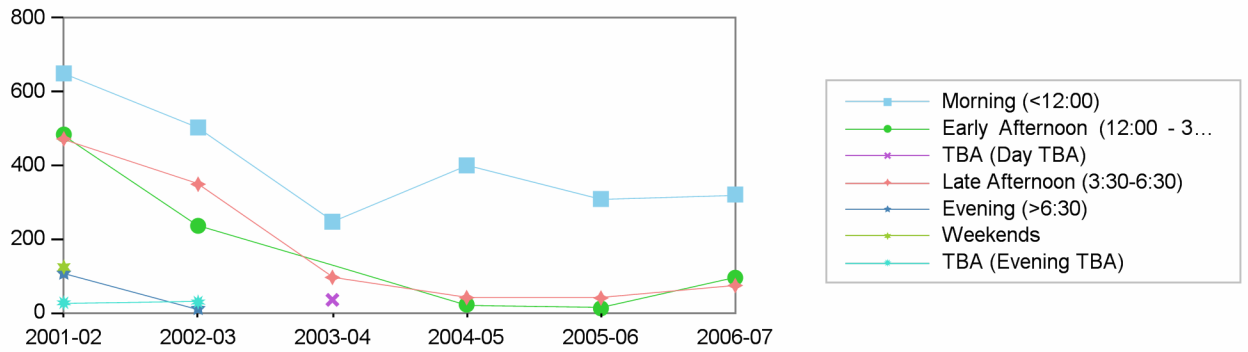
**Los Angeles City College  
Comprehensive Program Review 2008**

**Physical Education (Mens) Department  
Section IIa. Department Overview – Response to Demand: Enrollment**

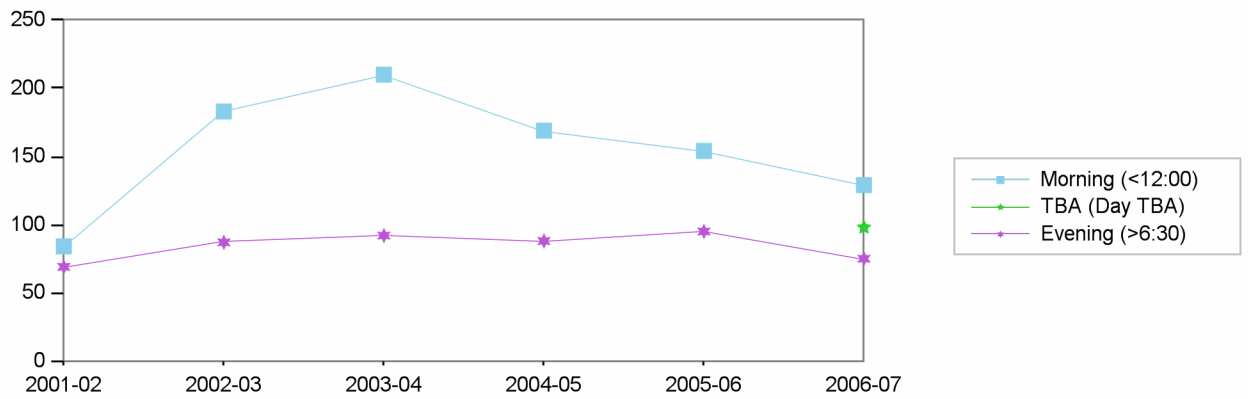


	2001-02	2002-03	2003-04	2004-05	2005-06	2006-07
Summer	1864	1128	378	463	361	490
Winter	153	270	302	257	249	302

Summer Enrollment by Time of Day



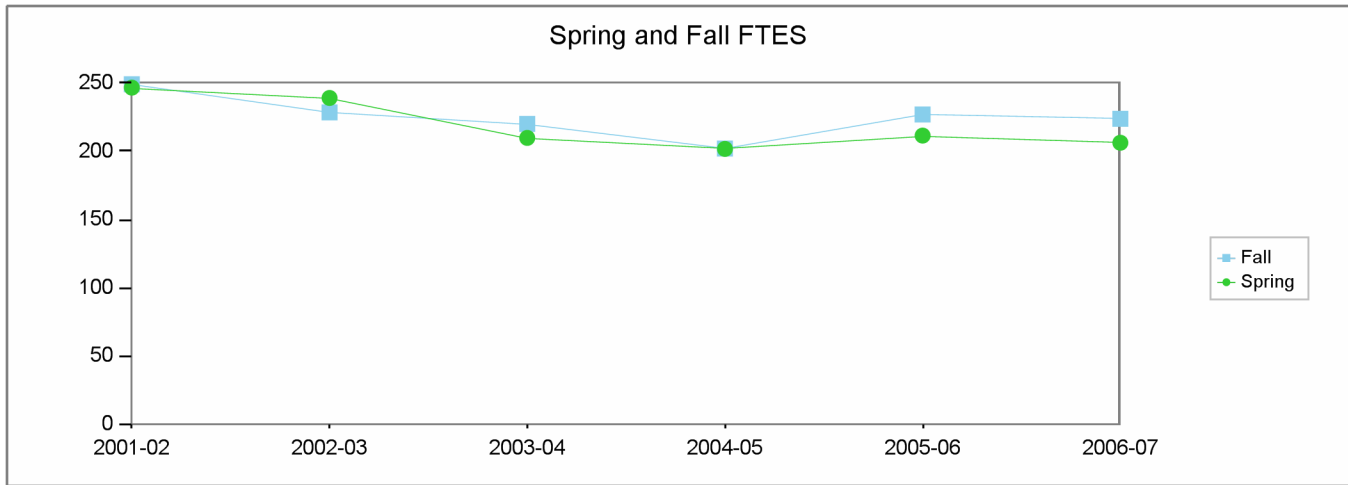
Winter Enrollment by Time of Day



	Morning (<12:00)	Early Afternoon (12:00 - 3:30)	TBA (Day TBA)	Late Afternoon (3:30-6:30)	Evening (>6:30)	Weekends	TBA (Evening TBA)
	Summer	Winter	Summer	Summer	Summer	Summer	Summer
2001-02	650	84	484		472	107	69
2002-03	503	183	236		349	11	87
2003-04	247	210		35	96		92
2004-05	400	169	22		41		88
2005-06	309	154	12		40		95
2006-07	321	129	95		74		75

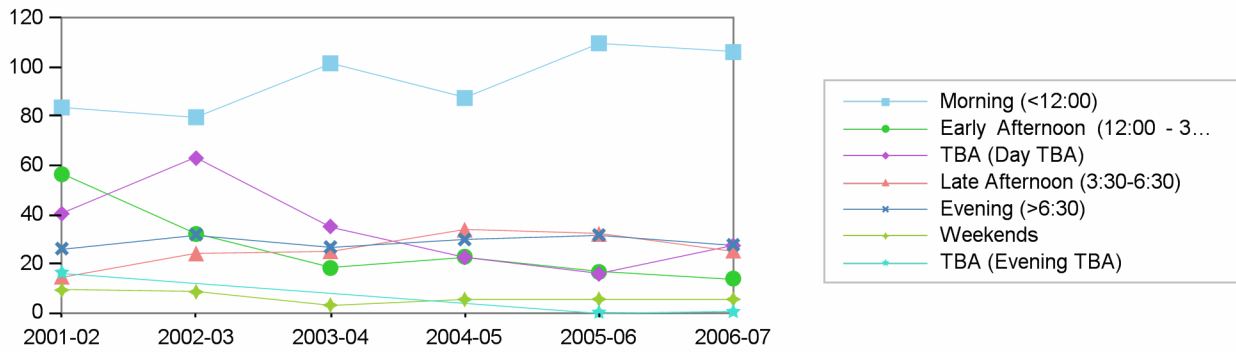
Los Angeles City College  
Comprehensive Program Review 2008

**Physical Education (Mens) Department**  
Section IIa. Department Overview – Response to Demand: FTES

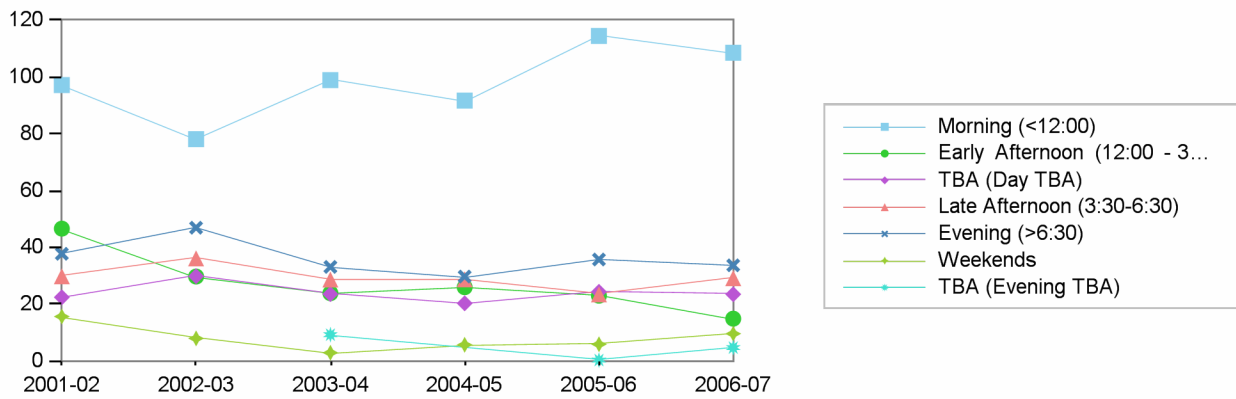


	2001-02	2002-03	2003-04	2004-05	2005-06	2006-07
Fall	249	229	220	202	227	224
Spring	247	239	210	202	212	206

Spring FTES by Time of Day



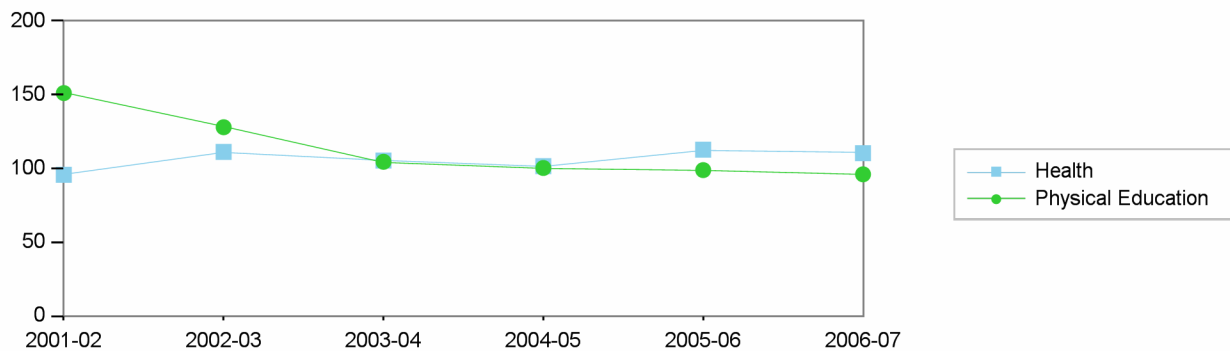
Fall FTES by Time of Day



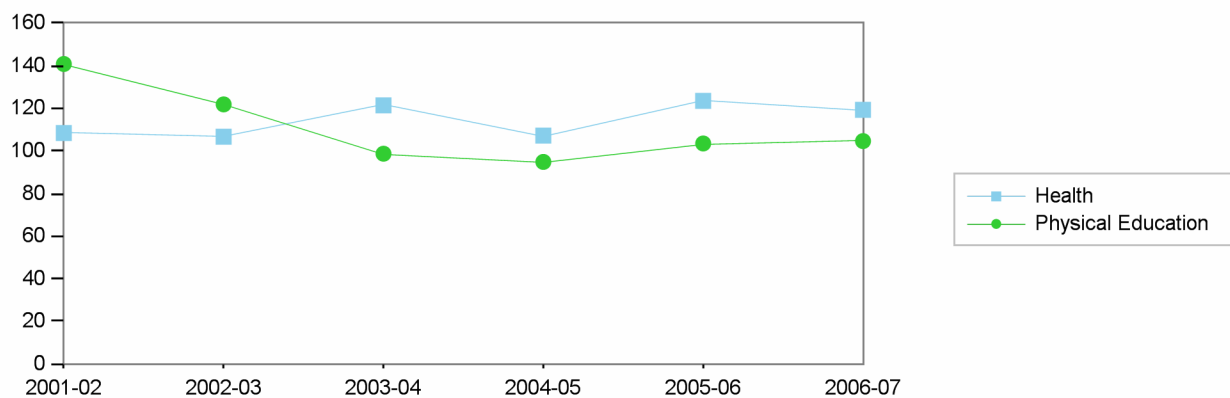
Morning (<12:00)    Early Afternoon (12:00 - 3:30)    TBA (Day TBA)    Late Afternoon (3:30-6:30)    Evening (>6:30)    Weekends    TBA (Evening TBA)

	Fall	Spring	Fall	Spring	Fall	Spring	Fall	Spring	Fall	Spring	Fall	Spring	Spring	Fall
2001-02	97	84	47	56	22	40	30	15	38	26	16	9	16	
2002-03	78	80	30	32	30	63	36	24	47	32	8	8		
2003-04	99	102	24	18	24	35	29	25	33	27	3	3		9
2004-05	92	87	26	23	20	23	29	34	30	30	6	5		
2005-06	114	110	23	17	24	16	23	32	36	32	6	6	0	0
2006-07	109	106	15	14	23	27	29	25	34	28	10	5	0	5

Spring FTES by Discipline



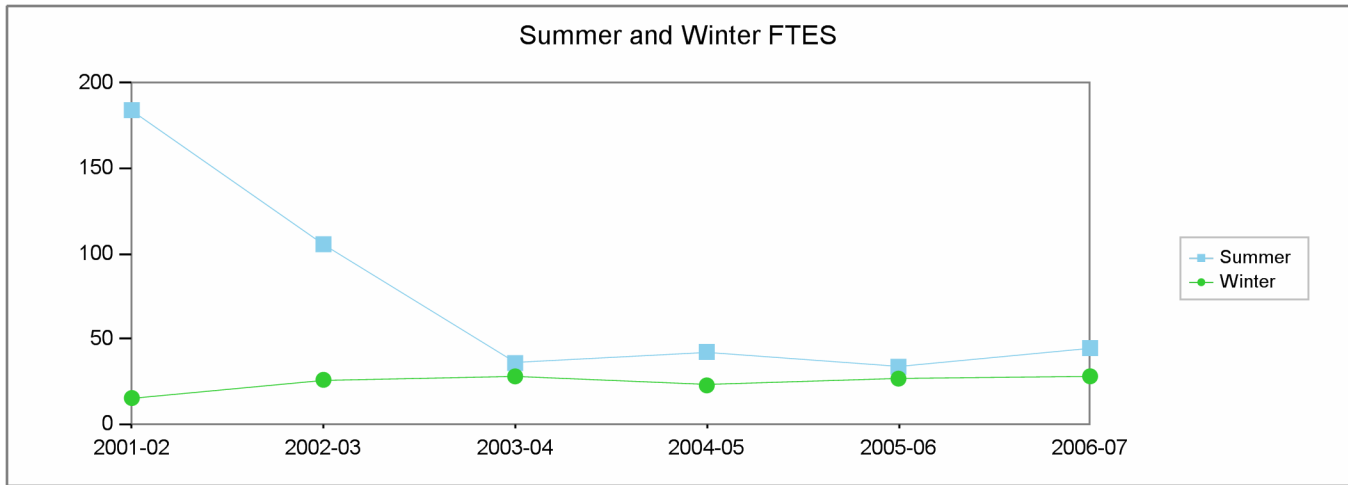
Fall FTES by Discipline



		2001-02	2002-03	2003-04	2004-05	2005-06	2006-07
Fall	Health	108	107	121	107	124	119
	Physical Education	141	122	99	95	104	105
Spring	Health	96	111	105	102	113	110
	Physical Education	151	128	105	100	99	96

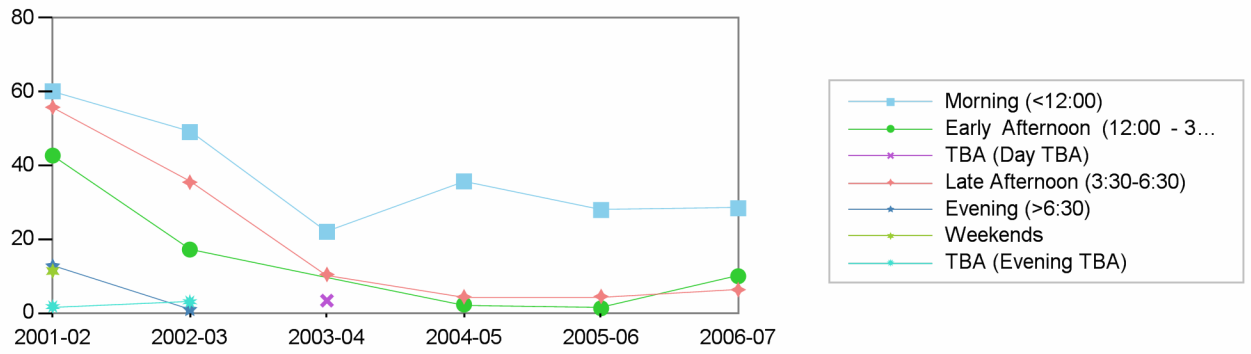
Los Angeles City College  
Comprehensive Program Review 2008

**Physical Education (Mens) Department**  
Section IIa. Department Overview – Response to Demand: FTES

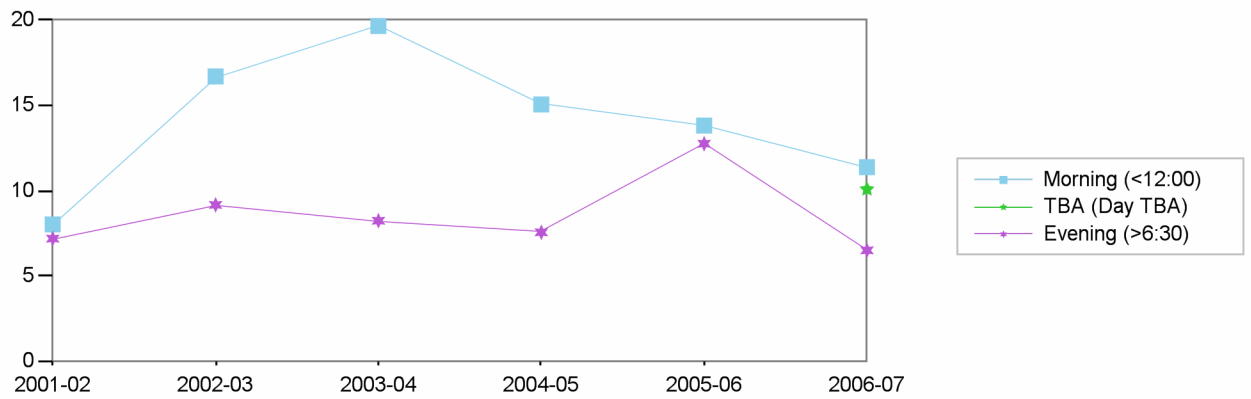


	2001-02	2002-03	2003-04	2004-05	2005-06	2006-07
Summer	184	105	36	42	34	45
Winter	15	26	28	23	27	28

Summer FTES by Time of Day

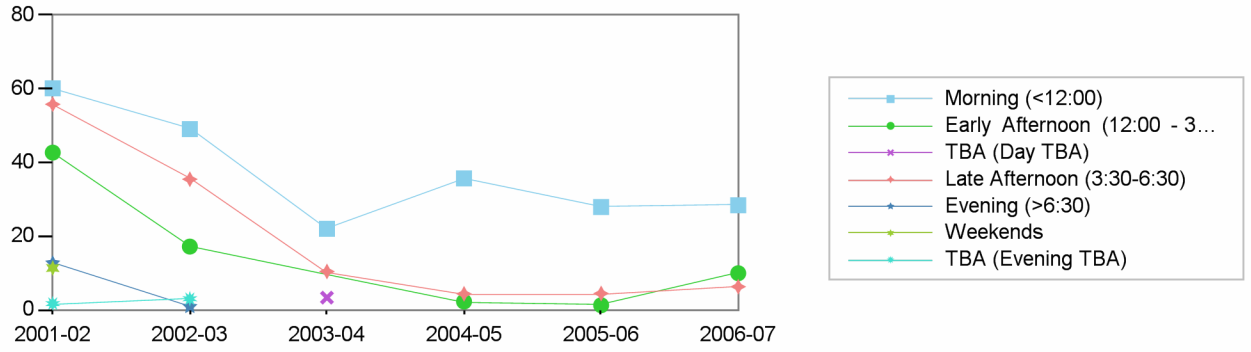


Winter FTES by Time of Day

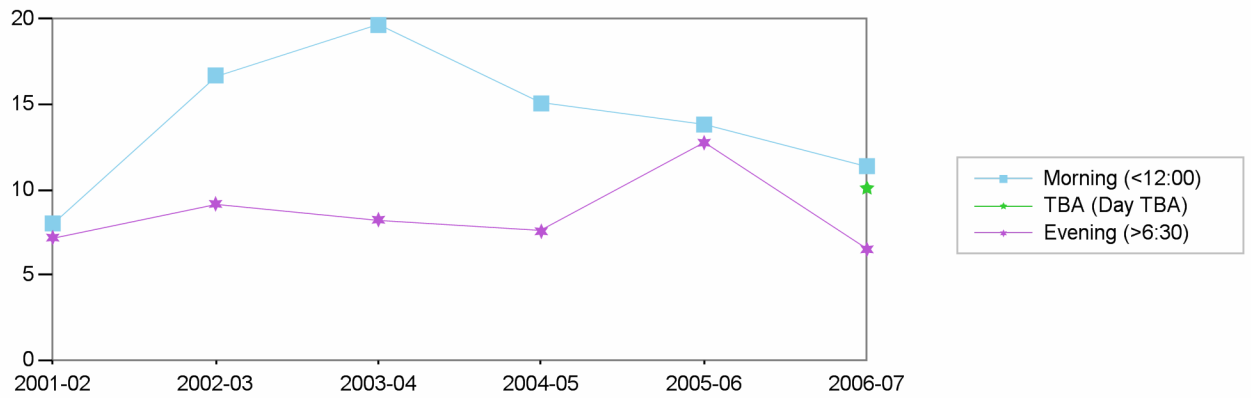


	Morning (<12:00)	Early Afternoon (12:00 - 3:30)	TBA (Day TBA)	Late Afternoon (3:30-6:30)	Evening (>6:30)	Weekends	TBA (Evening TBA)
	Summer	Winter	Summer	Summer	Summer	Summer	Summer
2001-02	60	8	43		56	13	7
2002-03	49	17	17		35	1	9
2003-04	22	20		3	10		8
2004-05	36	15	2		4		8
2005-06	28	14	1		4		13
2006-07	28	11	10	10	6		6

Summer FTES by Time of Day



Winter FTES by Time of Day

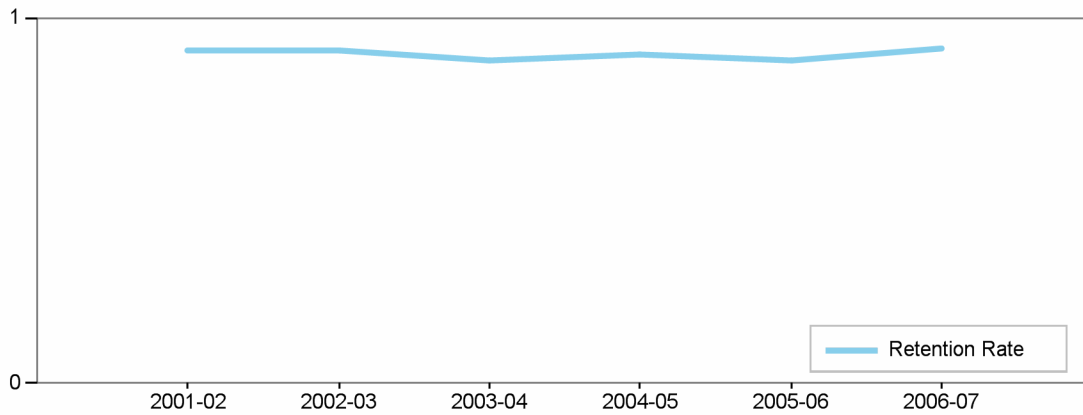


		2001-02	2002-03	2003-04	2004-05	2005-06	2006-07
Summer	Health	43	32	18	28	23	20
	Physical Education	142	74	17	14	11	24
Winter	Health	10	14	16	12	11	10
	Physical Education	5	11	12	10	16	18

**Los Angeles City College**  
**Comprehensive Program Review 2008**

**Physical Education (Mens) Department**  
**Section IIc. Department Overview – Student Achievements**

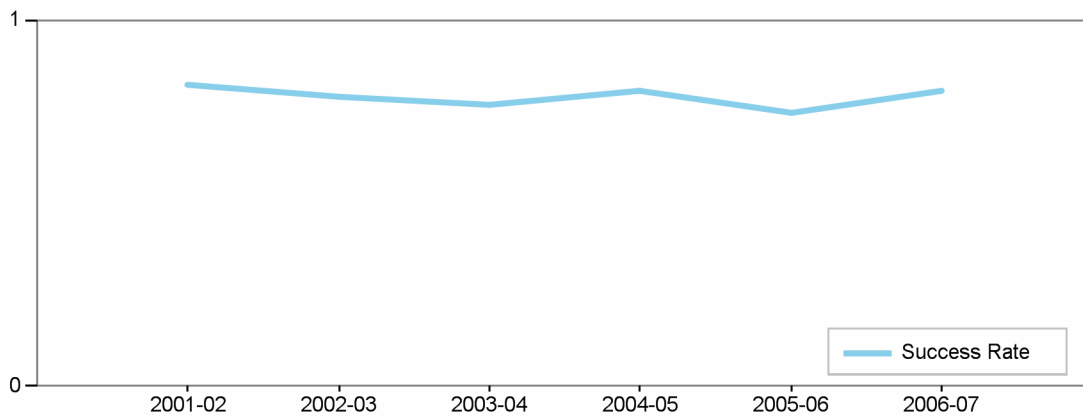
Department's Retention Rate



Retention Rate=  
 Numerator: Number of enrollments with A,B,C,D,F,CR,NC,I  
 Denominator: Number of enrollments with A,B,C,D,F,CR,NC,W,I

<b>Retention Rate</b>	2001-02	2002-03	2003-04	2004-05	2005-06	2006-07
Physical Education (Mens)	91 %	91 %	88 %	90 %	88 %	91 %
Physical Education (Womens)	96 %	95 %	100 %	NaN	NaN	100 %

Department's Success Rate



Success Rate =  
 Numerator: Number of enrollments with A,B,C,CR  
 Denominator: Number of enrollments with A,B,C,D,F,CR,NC,W,I

<b>Success Rate</b>	2001-02	2002-03	2003-04	2004-05	2005-06	2006-07
Physical Education (Mens)	82 %	79 %	77 %	80 %	75 %	81 %

**Success Rate**

2001-02

2002-03

2003-04

2004-05

2005-06

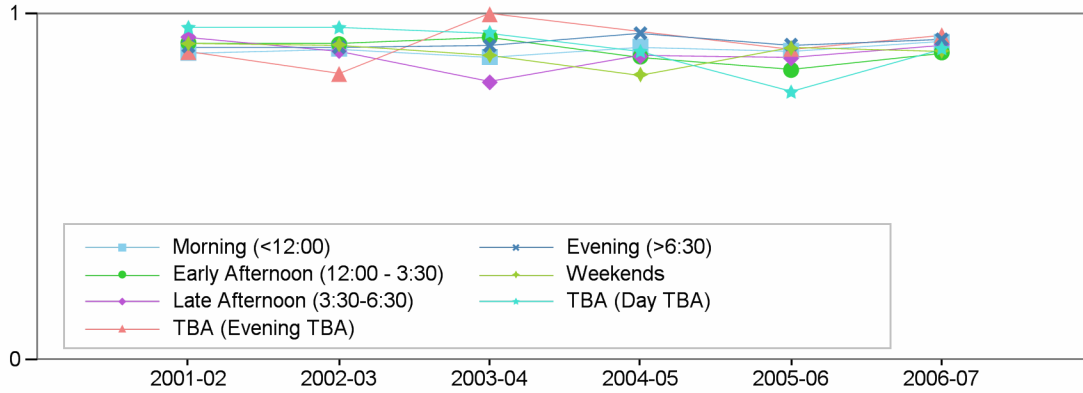
2006-07

Physical  
Education  
(Womens)

84 %	85 %	100 %	NaN	NaN	100 %
------	------	-------	-----	-----	-------

## Department Success and Retention Rates by Time of Day

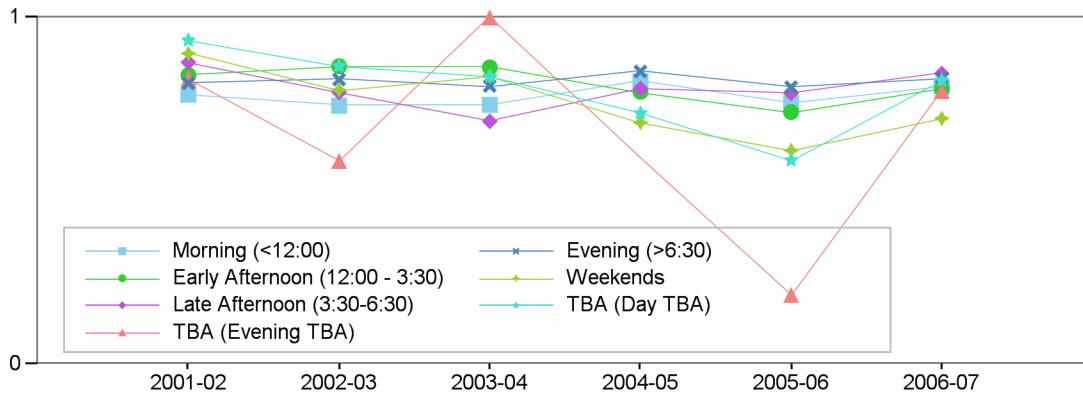
### Retention Rate by Time of Day



#### Retention Rate

	2001-02	2002-03	2003-04	2004-05	2005-06	2006-07
Morning (<12:00)	89 %	90 %	88 %	91 %	89 %	92 %
Early Afternoon (12:00 - 3:30)	92 %	91 %	93 %	88 %	84 %	89 %
Late Afternoon (3:30-6:30)	93 %	89 %	80 %	88 %	87 %	91 %
TBA (Evening TBA)	89 %	83 %	100 %	NaN	90 %	94 %
Evening (>6:30)	91 %	90 %	91 %	95 %	91 %	93 %
Weekends	92 %	91 %	88 %	83 %	90 %	89 %
TBA (Day TBA)	96 %	96 %	95 %	89 %	77 %	90 %

### Success Rate by Time of Day

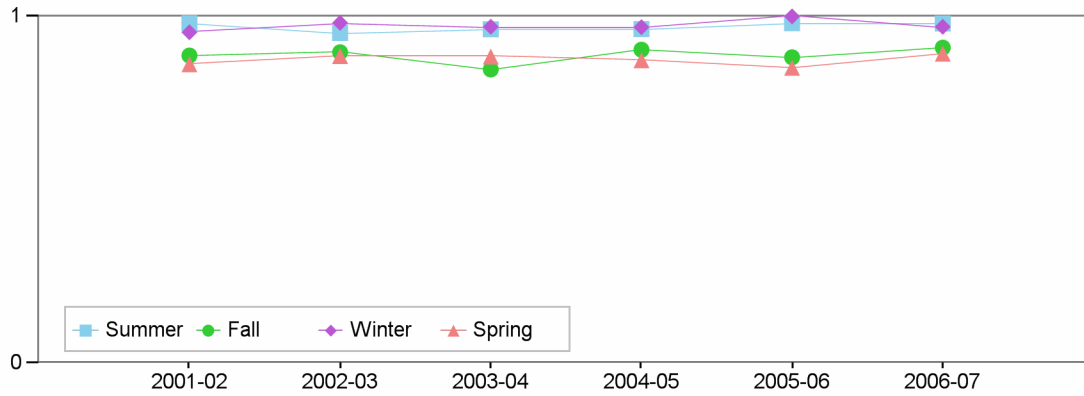


#### Success Rate

	2001-02	2002-03	2003-04	2004-05	2005-06	2006-07
Morning (<12:00)	78 %	75 %	75 %	82 %	75 %	80 %
Early Afternoon (12:00 - 3:30)	83 %	86 %	86 %	79 %	73 %	79 %
Late Afternoon (3:30-6:30)	87 %	78 %	70 %	79 %	78 %	84 %
TBA (Evening TBA)	82 %	59 %	100 %	NaN	20 %	79 %
Evening (>6:30)	81 %	82 %	80 %	84 %	80 %	83 %
Weekends	90 %	79 %	83 %	70 %	62 %	71 %
TBA (Day TBA)	93 %	86 %	83 %	72 %	59 %	82 %

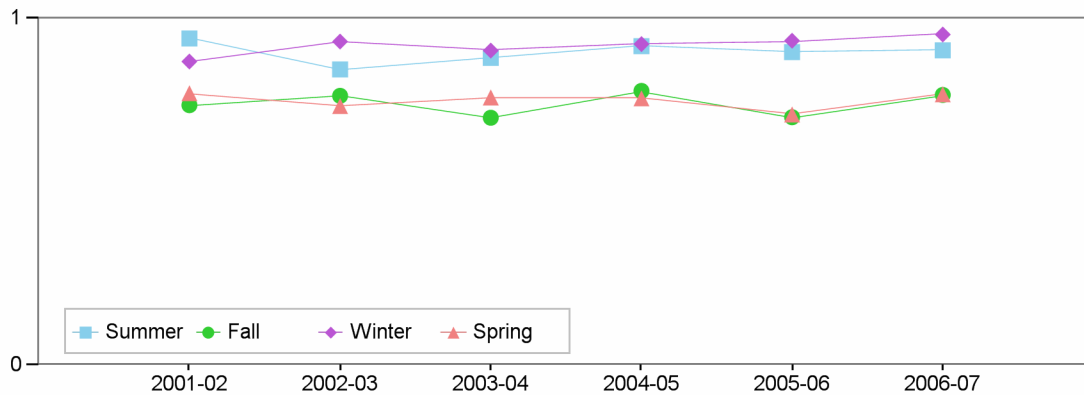
## Department Success and Retention Rates by Term

### Retention Rate by Term



Retention Rate	2001-02	2002-03	2003-04	2004-05	2005-06	2006-07
Summer	98 %	95 %	96 %	96 %	98 %	98 %
Fall	89 %	90 %	85 %	90 %	88 %	91 %
Winter	95 %	98 %	97 %	97 %	100 %	97 %
Spring	86 %	89 %	88 %	87 %	85 %	89 %

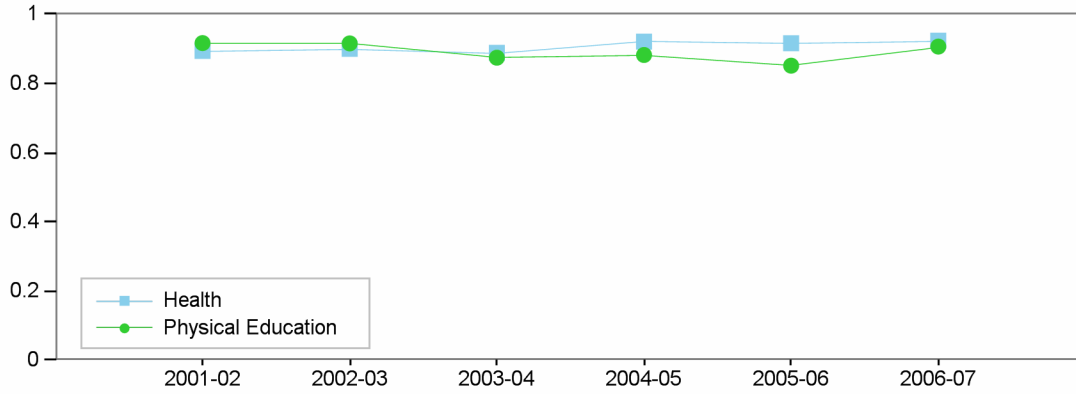
### Success Rate by Term



Success Rate	2001-02	2002-03	2003-04	2004-05	2005-06	2006-07
Summer	94 %	85 %	89 %	92 %	90 %	91 %
Fall	75 %	78 %	71 %	79 %	72 %	78 %
Winter	88 %	93 %	91 %	93 %	94 %	95 %
Spring	78 %	75 %	77 %	77 %	72 %	78 %

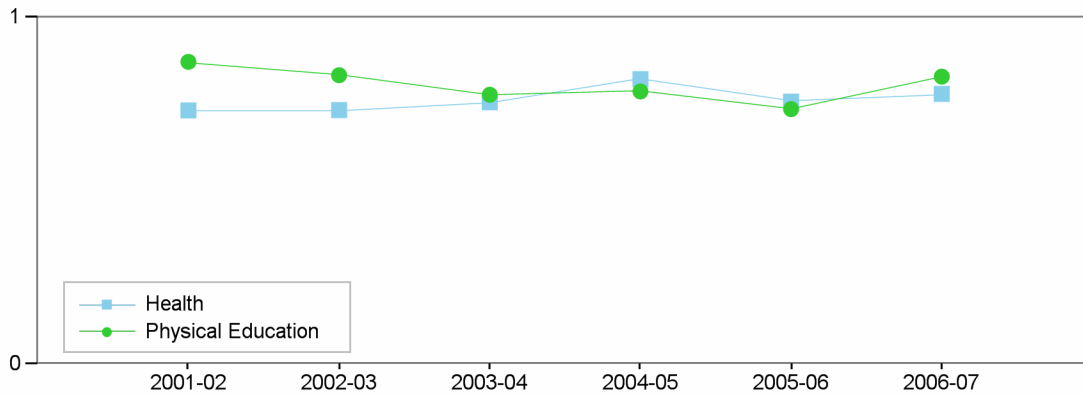
## Department Success and Retention Rates by Discipline

### Retention Rate by Discipline



<b>Retention Rate</b>	2001-02	2002-03	2003-04	2004-05	2005-06	2006-07
Health	89 %	90 %	89 %	92 %	92 %	92 %
Physical Education	92 %	92 %	87 %	88 %	85 %	91 %

### Success Rate by Discipline



<b>Success Rate</b>	2001-02	2002-03	2003-04	2004-05	2005-06	2006-07
Health	73 %	73 %	76 %	82 %	76 %	78 %
Physical Education	87 %	83 %	78 %	79 %	74 %	83 %

**Los Angeles City College**

**Comprehensive Program Review 2008**

**Department**

**Section IIc. Department Overview – Student Achievements**

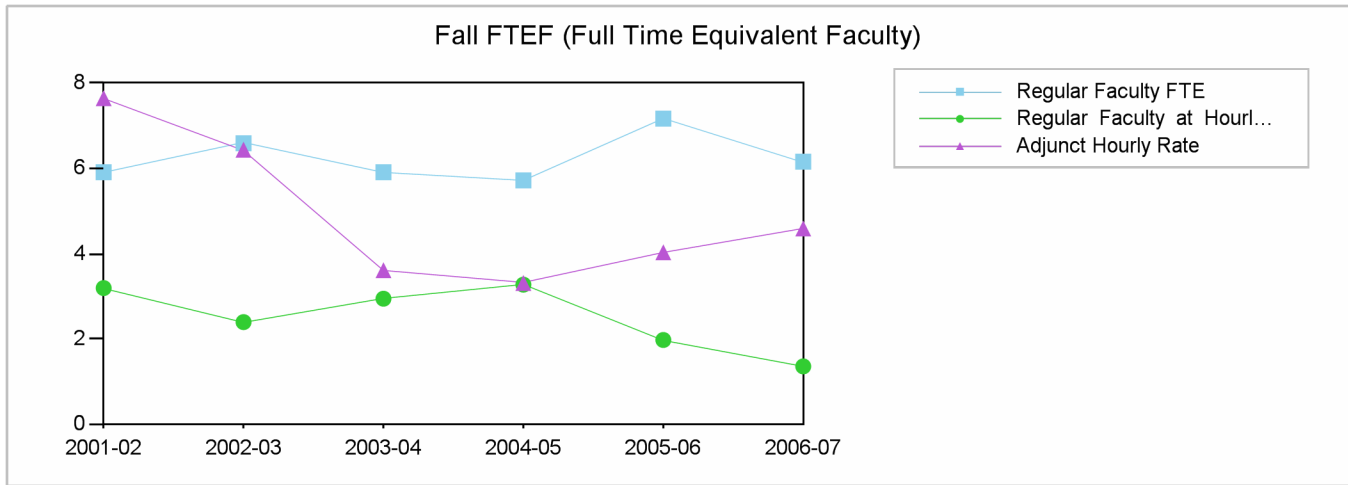
**Department's Awards by Program**



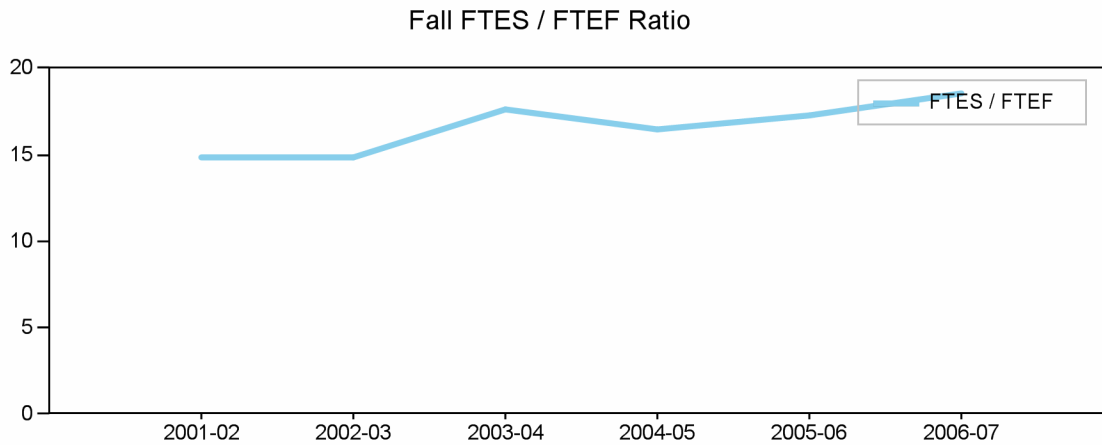
**Los Angeles City College  
Comprehensive Program Review 2008**

**Physical Education (Mens) Department**

**Section IId. Department Overview – FTEF**

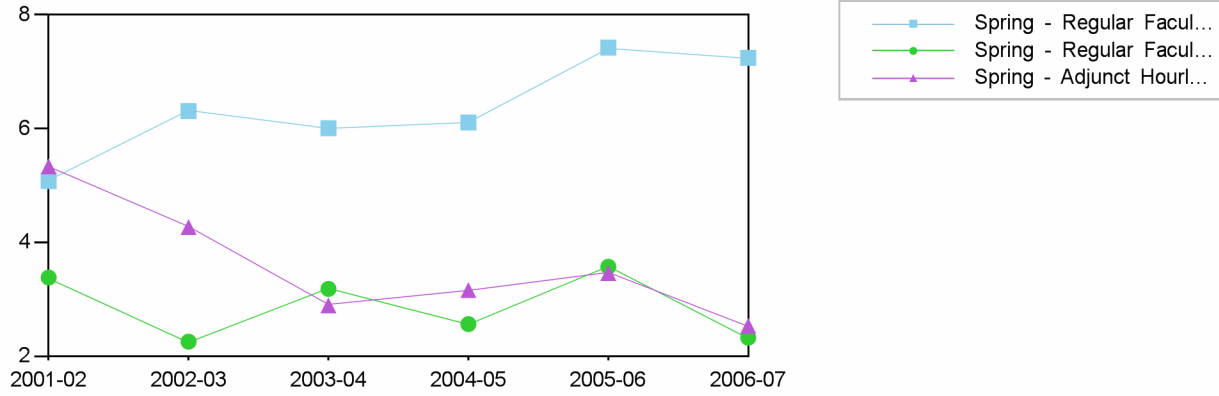


Fall	2001-02	2002-03	2003-04	2004-05	2005-06	2006-07
Regular Faculty FTE	5.91	6.59	5.91	5.72	7.17	6.16
Regular Faculty at Hourly Rate	3.19	2.39	2.94	3.27	1.97	1.35
Adjunct Hourly Rate	7.65	6.44	3.61	3.31	4.03	4.59
Total	16.75	15.42	12.46	12.3	13.17	12.1



Fall	2001-02	2002-03	2003-04	2004-05	2005-06	2006-07
Total FTEF	16.75	15.42	12.46	12.3	13.17	12.1
Total FTES	249.3	228.62	220.15	202.07	227.05	223.97
FTES / FTEF	14.9	14.8	17.7	16.4	17.2	18.5

Spring FTEF (Full Time Equivalent Faculty)



Spring

**2001-02 2002-03 2003-04 2004-05 2005-06 2006-07**

**Spring Spring Spring Spring Spring Spring**

Regular Faculty FTE

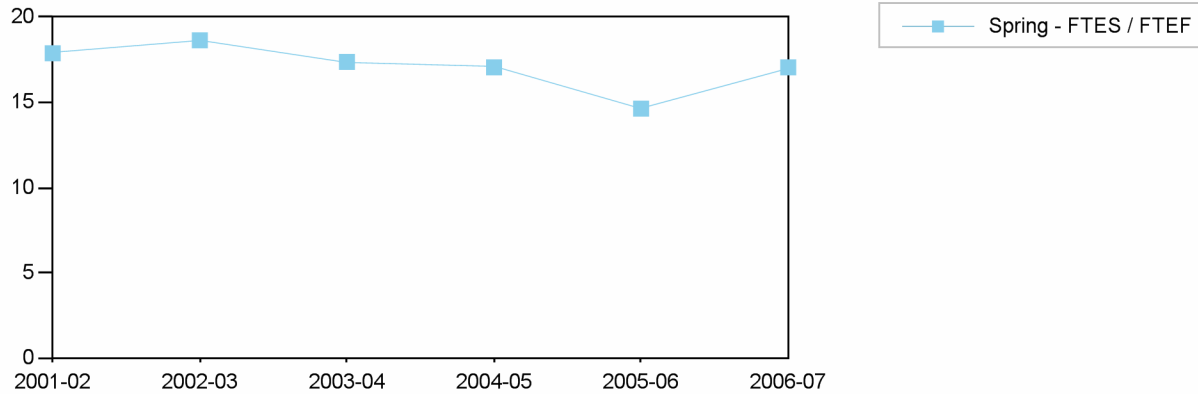
Regular Faculty FTE	5.08	6.31	6.01	6.11	7.43	7.25
Regular Faculty at Hourly Rate	3.38	2.25	3.18	2.56	3.57	2.32
Adjunct Hourly Rate	5.34	4.27	2.89	3.16	3.46	2.53
Total	13.8	12.83	12.08	11.83	14.46	12.1

Regular Faculty at Hourly Rate

Adjunct Hourly Rate

Total

Spring FTES / FTEF Ratio



Spring

**2001-02 2002-03 2003-04 2004-05 2005-06 2006-07**

**Spring Spring Spring Spring Spring Spring**

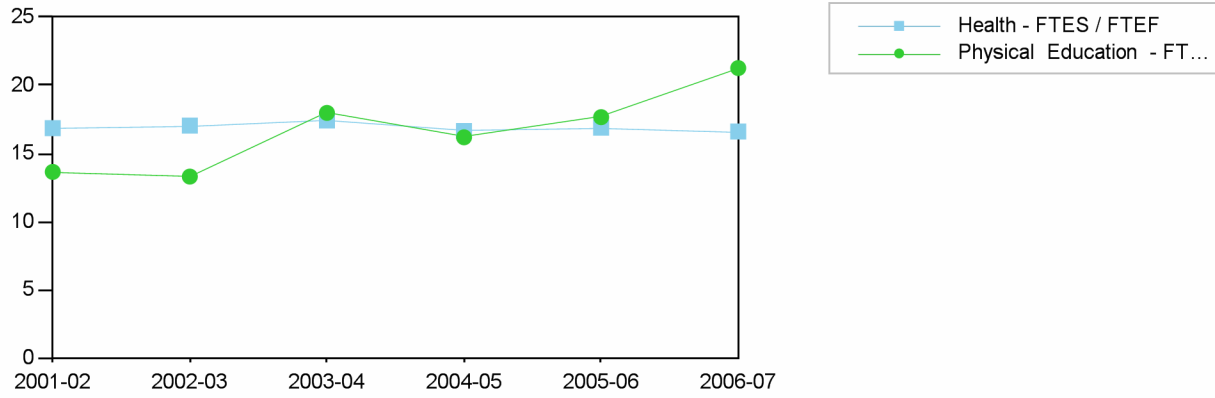
Total FTEF

Total FTES

FTES / FTEF

Total FTEF	13.8	12.83	12.08	11.83	14.46	12.1
Total FTES	246.8	239.22	209.9	201.83	211.61	206.35
FTES / FTEF	17.9	18.6	17.4	17.1	14.6	17.1

Fall FTES / FTEF Ratio by Discipline



2001-02 2002-03 2003-04 2004-05 2005-06 2006-07

**Health**

Total FTEF	6.43	6.26	6.97	6.44	7.31	7.18
Total FTES	108.43	106.73	121.43	107.2	123.51	119.31
FTES / FTEF	16.9	17.0	17.4	16.6	16.9	16.6

**Physical Education**

Total FTEF	10.32	9.16	5.49	5.86	5.86	4.92
Total FTES	140.87	121.89	98.72	94.87	103.54	104.66
FTES / FTEF	13.7	13.3	18.0	16.2	17.7	21.3