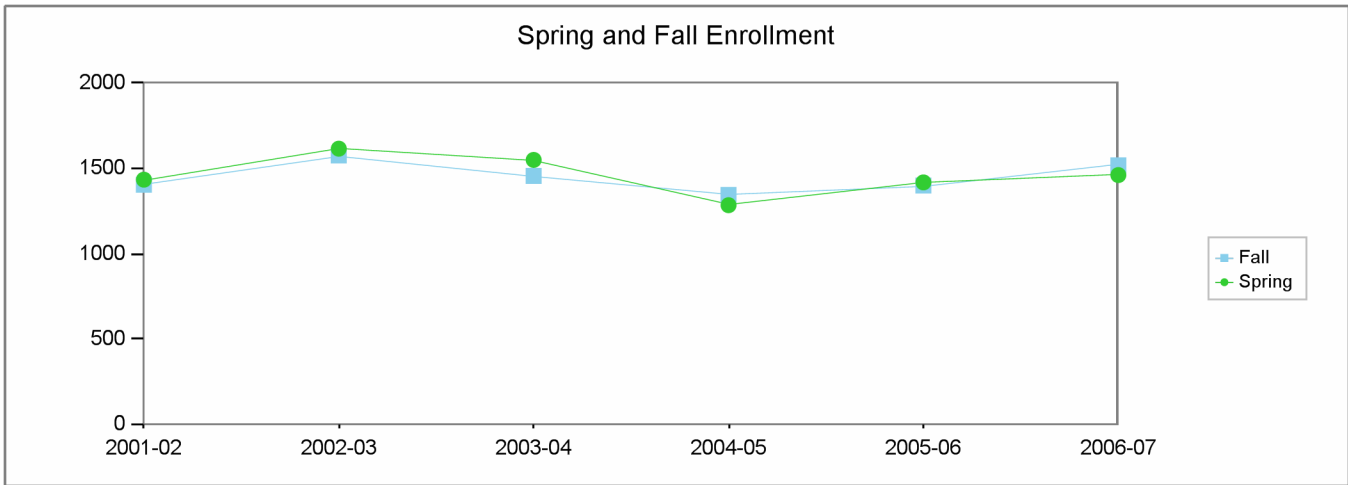


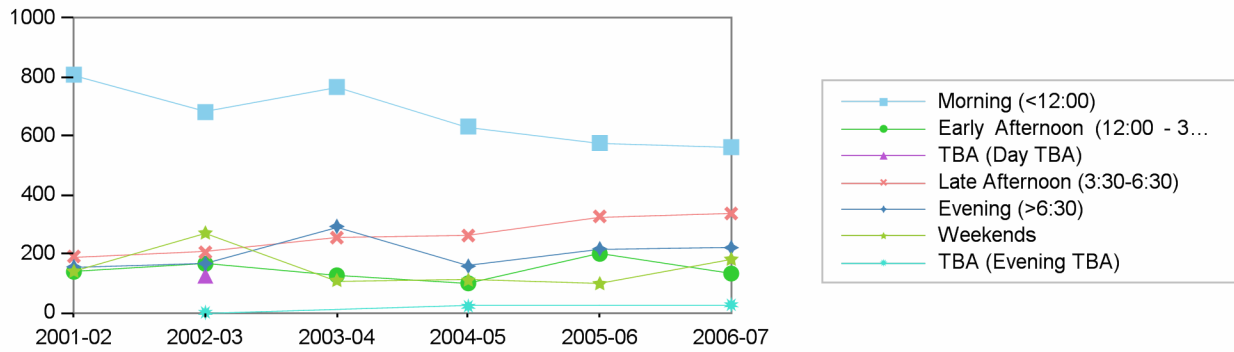
**Los Angeles City College  
Comprehensive Program Review 2008**

**Physical Education (Womens) Department  
Section IIa. Department Overview – Response to Demand: Enrollment**



	2001-02	2002-03	2003-04	2004-05	2005-06	2006-07
Fall	1404	1576	1456	1344	1400	1518
Spring	1434	1616	1550	1284	1418	1461

Spring Enrollment by Time of Day



Fall Enrollment by Time of Day



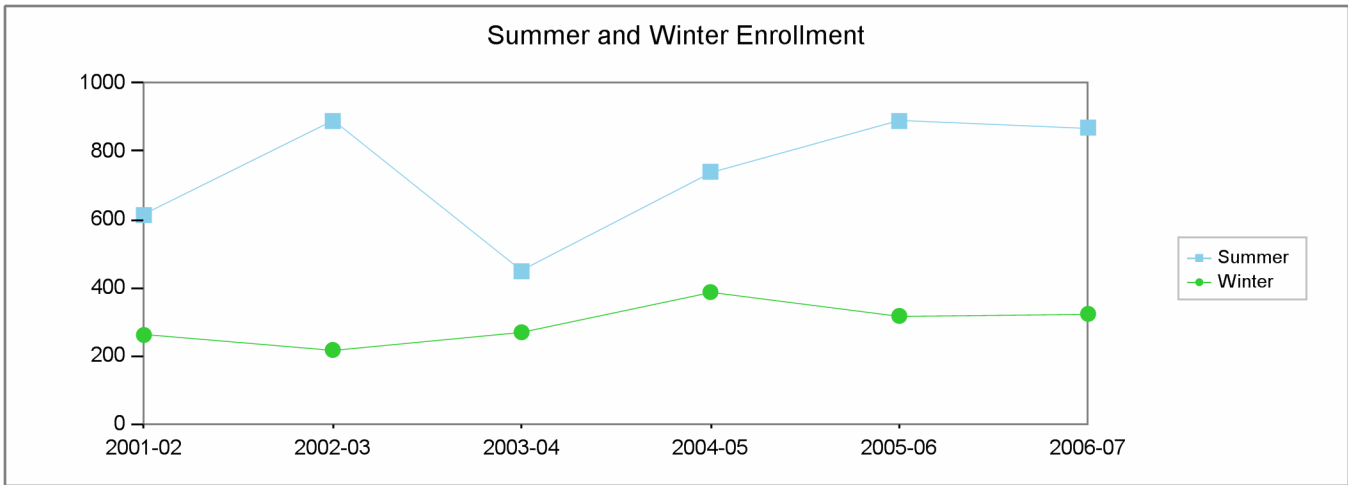
Morning (<12:00)    Early Afternoon (12:00 - 3:30)    TBA (Day TBA)    Late Afternoon (3:30-6:30)    Evening (>6:30)    Weekends    TBA (Evening TBA)

Fall    Spring    Fall    Spring    Fall    Spring    Fall    Spring    Fall    Spring    Fall    Spring    Fall    Spring

2001-02	504	808	165	139	205		242	191	113	156	109	140	66	
2002-03	649	681	172	166	138	126	255	205	140	167	222	270		1
2003-04	731	766	163	127			263	255	166	293	133	109		
2004-05	570	632	122	100	190		110	262	156	158	86	110	110	22
2005-06	423	576	143	200	153		260	327	230	217	113	98	78	
2006-07	520	562	115	133	130		174	337	269	221	204	181	106	27

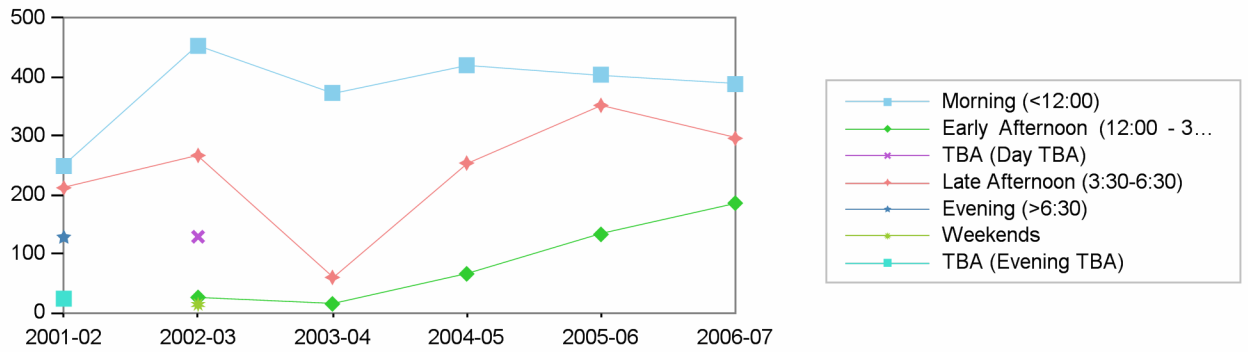
**Los Angeles City College  
Comprehensive Program Review 2008**

**Physical Education (Womens) Department  
Section IIa. Department Overview – Response to Demand: Enrollment**

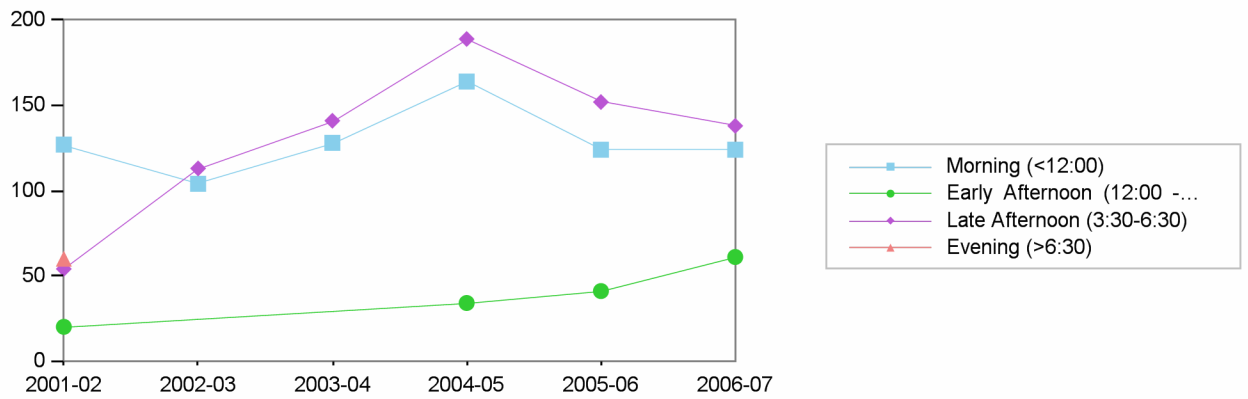


	2001-02	2002-03	2003-04	2004-05	2005-06	2006-07
Summer	613	889	448	740	889	870
Winter	261	217	269	387	317	323

Summer Enrollment by Time of Day



Winter Enrollment by Time of Day



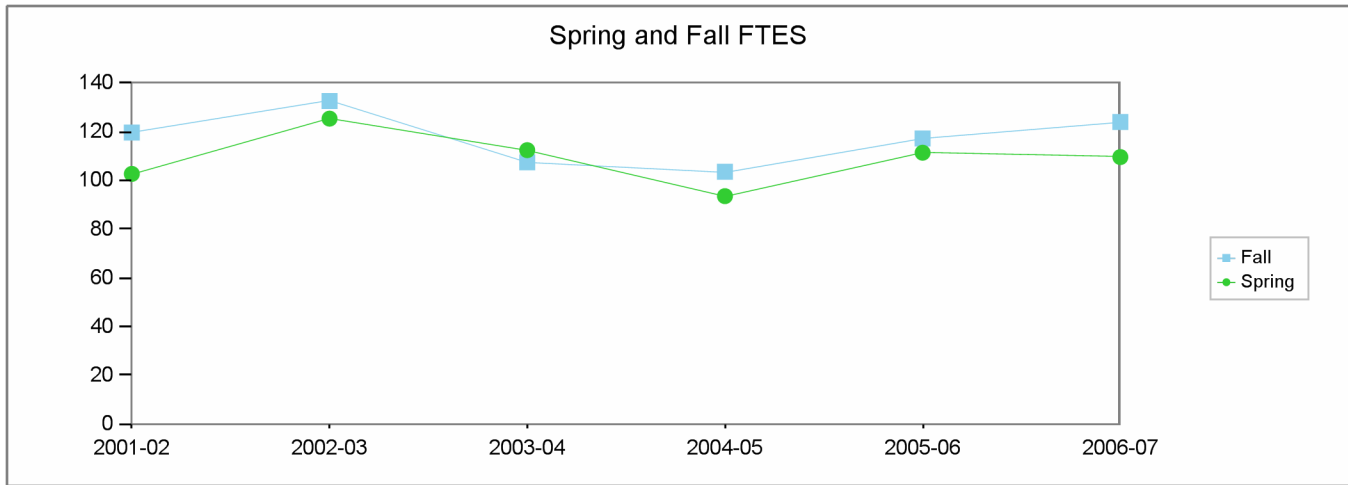
Morning (<12:00)    Early Afternoon (12:00 - 3:30)    TBA (Day TBA)    Late Afternoon (3:30-6:30)    Evening (>6:30)    Weekends    TBA (Evening TBA)

Summer    Winter    Winter    Summer    Summer    Summer    Winter    Summer    Winter    Summer    Summer

2001-02	249	127	20			212	54	128	60		24
2002-03	453	104		26	129	267	113			14	
2003-04	373	128		15		60	141				
2004-05	420	164	34	66		254	189				
2005-06	404	124	41	133		352	152				
2006-07	388	124	61	186		296	138				

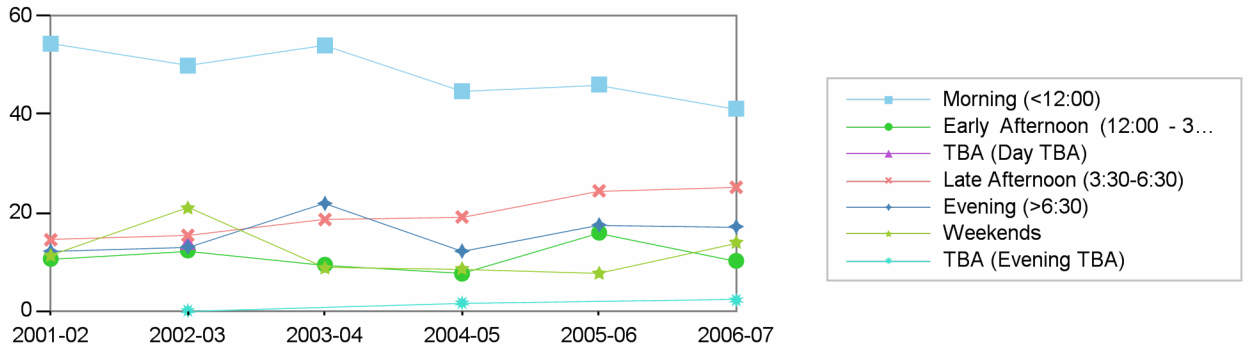
Los Angeles City College  
Comprehensive Program Review 2008

**Physical Education (Womens) Department**  
Section IIa. Department Overview – Response to Demand: FTES

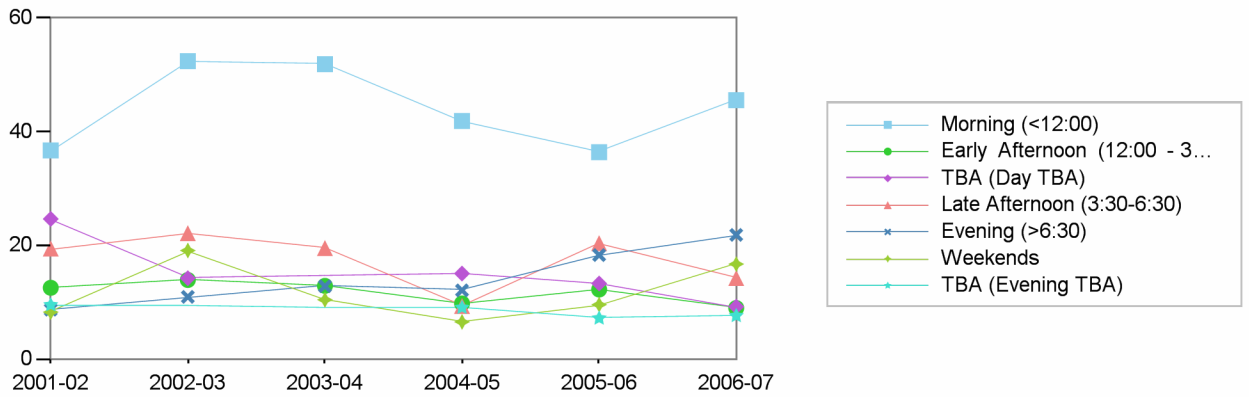


	2001-02	2002-03	2003-04	2004-05	2005-06	2006-07
Fall	120	133	108	104	117	124
Spring	103	125	113	94	111	110

Spring FTES by Time of Day



Fall FTES by Time of Day

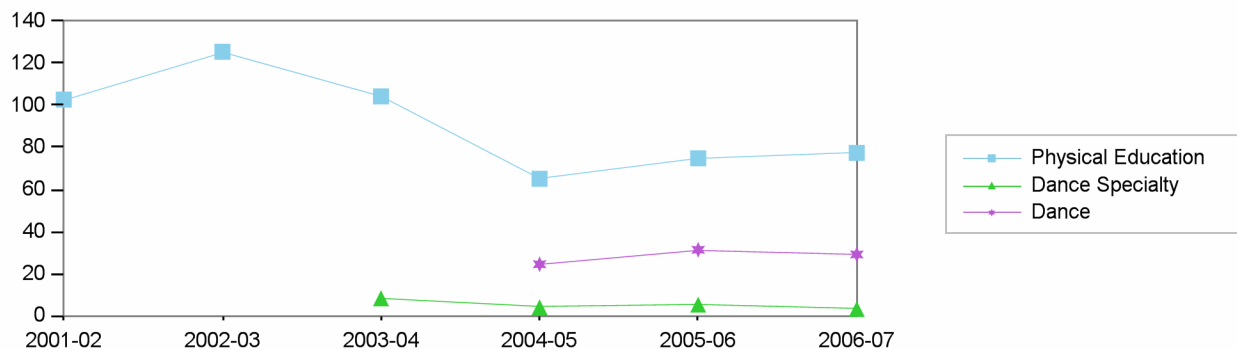


Morning (<12:00)    Early Afternoon (12:00 - 3:30)    TBA (Day TBA)    Late Afternoon (3:30-6:30)    Evening (>6:30)    Weekends    TBA (Evening TBA)

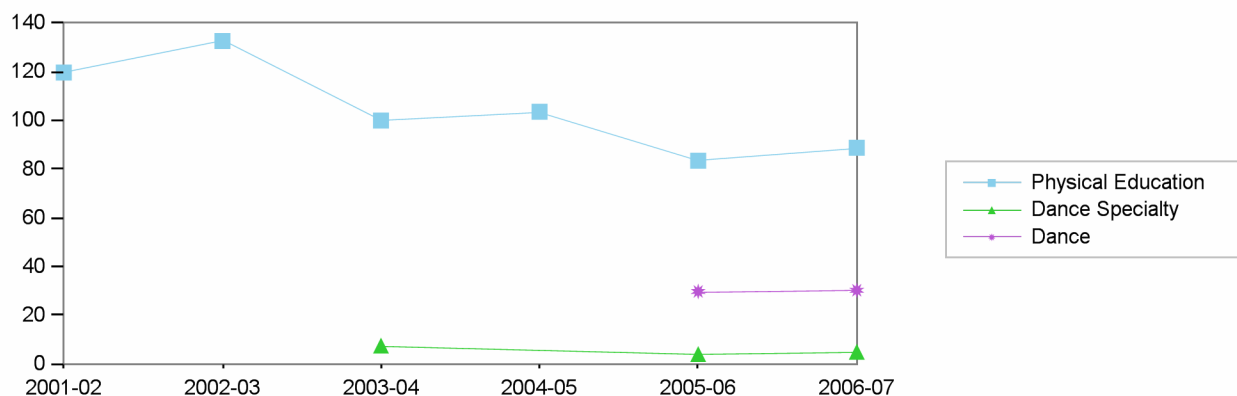
Fall    Spring    Fall    Spring    Fall    Spring    Fall    Spring    Fall    Spring    Fall    Spring    Fall    Spring

2001-02	37	54	13	11	25		19	14	9	12	8	11	10	
2002-03	52	50	14	12	14	14	22	15	11	13	19	21		0
2003-04	52	54	13	9			20	19	13	22	10	9		
2004-05	42	45	10	8	15		9	19	12	12	7	9	9	2
2005-06	36	46	12	16	13		20	24	18	17	10	8	7	
2006-07	46	41	9	10	9		14	25	22	17	17	14	8	2

Spring FTES by Discipline



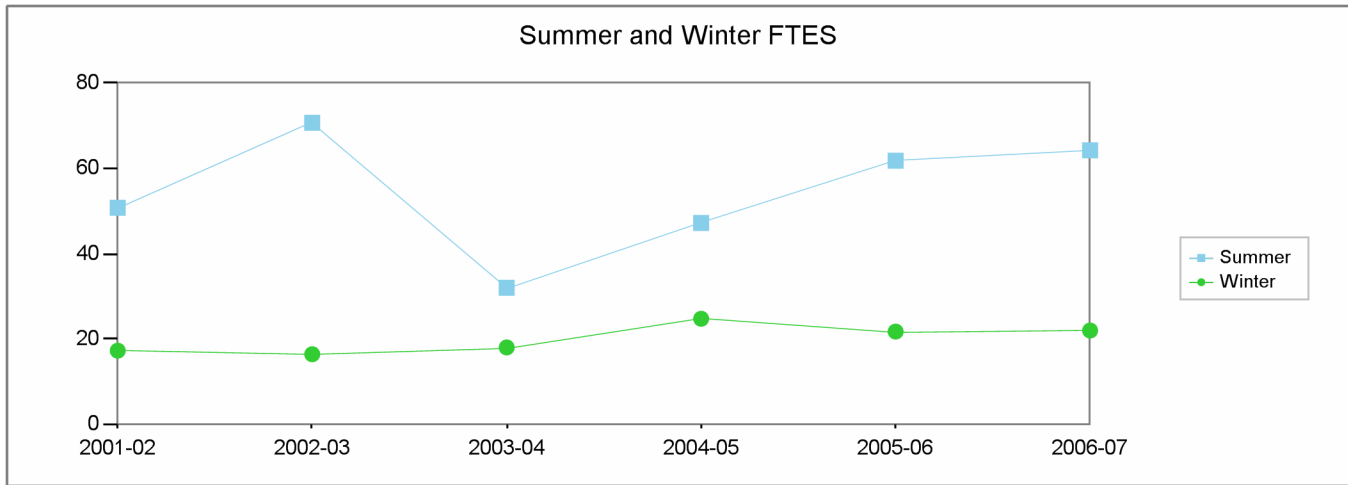
Fall FTES by Discipline



		2001-02	2002-03	2003-04	2004-05	2005-06	2006-07
Fall	Physical Education	120	133	100	104	83	89
	Dance Specialty			8		4	5
	Dance					30	30
Spring	Physical Education	103	125	104	65	75	77
	Dance Specialty			8	4	5	3
	Dance				24	31	29

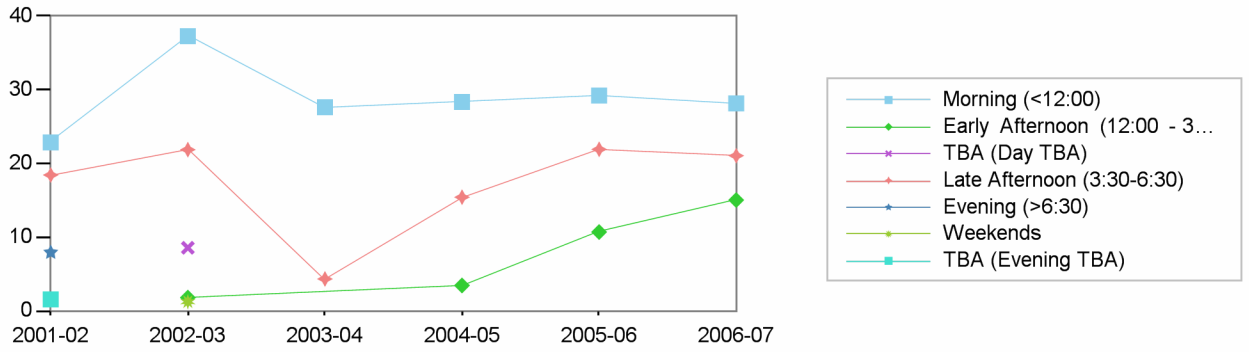
**Los Angeles City College  
Comprehensive Program Review 2008**

**Physical Education (Womens) Department  
Section IIa. Department Overview – Response to Demand: FTES**

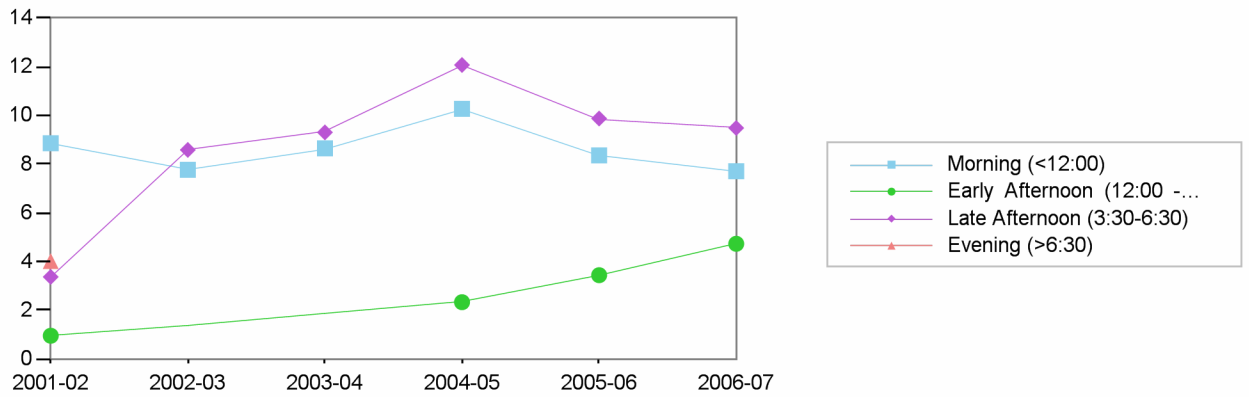


	2001-02	2002-03	2003-04	2004-05	2005-06	2006-07
Summer	51	71	32	47	62	64
Winter	17	16	18	25	22	22

Summer FTES by Time of Day



Winter FTES by Time of Day

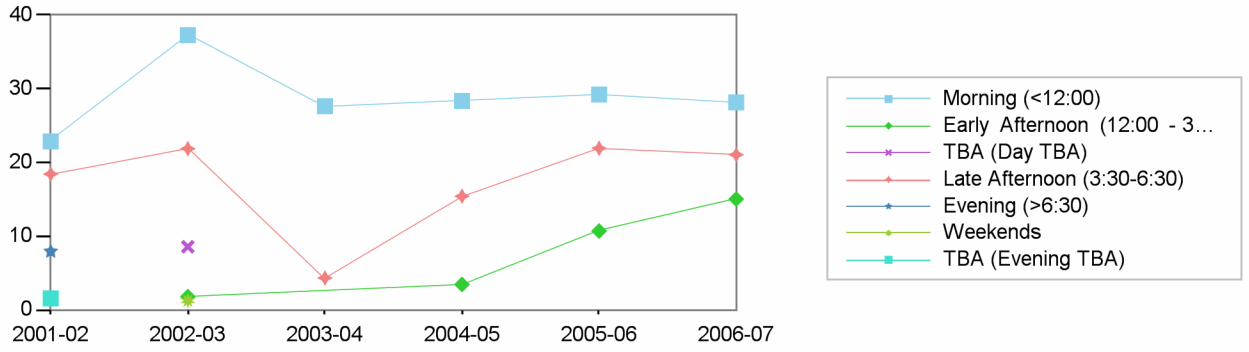


Morning (<12:00)    Early Afternoon (12:00 - 3:30)    TBA (Day TBA)    Late Afternoon (3:30-6:30)    Evening (>6:30)    Weekends    TBA (Evening TBA)

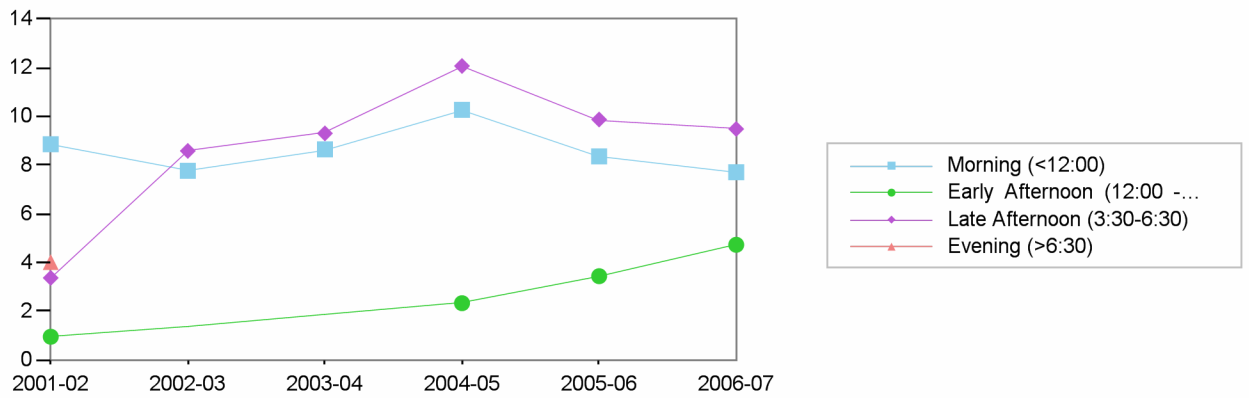
Summer    Winter    Winter    Summer    Summer    Summer    Winter    Summer    Winter    Summer    Summer

2001-02	23	9	1			18	3	8	4		2
2002-03	37	8		2	9	22	9			1	
2003-04	28	9				4	9				
2004-05	28	10	2	3		15	12				
2005-06	29	8	3	11		22	10				
2006-07	28	8	5	15		21	9				

Summer FTES by Time of Day



Winter FTES by Time of Day

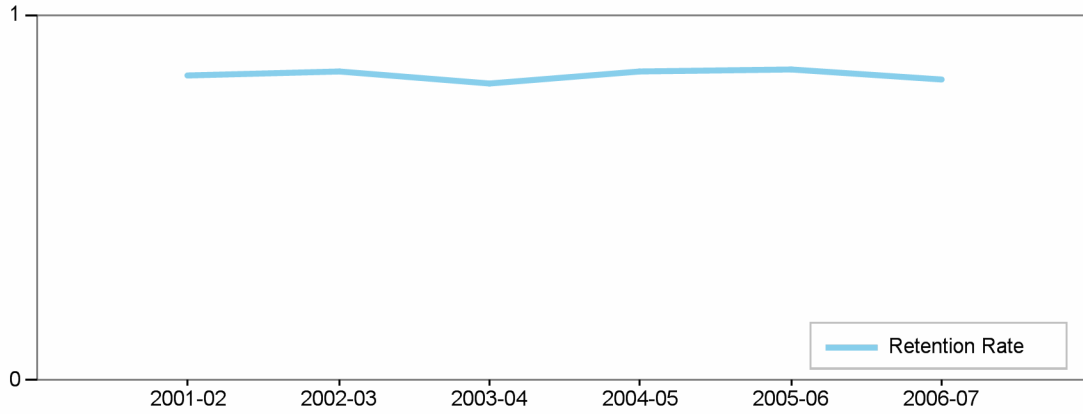


		2001-02	2002-03	2003-04	2004-05	2005-06	2006-07
Summer	Physical Education	51	71	32	47	57	57
	Dance					5	7
Winter	Physical Education	17	16	18	22	18	18
	Dance				3	4	4

**Los Angeles City College**  
**Comprehensive Program Review 2008**

**Physical Education (Womens) Department**  
**Section IIc. Department Overview – Student Achievements**

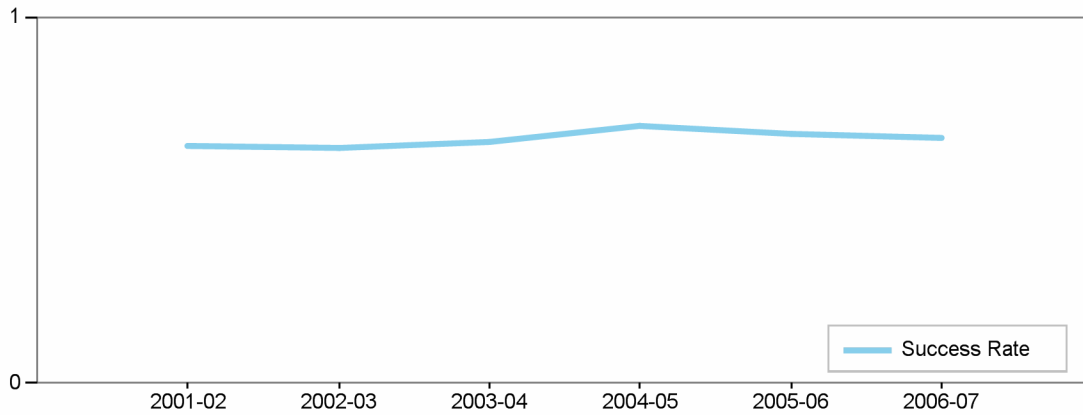
Department's Retention Rate



Retention Rate=  
 Numerator: Number of enrollments with A,B,C,D,F,CR,NC,I  
 Denominator: Number of enrollments with A,B,C,D,F,CR,NC,W,I

<b>Retention Rate</b>	2001-02	2002-03	2003-04	2004-05	2005-06	2006-07
Physical Education (Womens)	83 %	84 %	81 %	84 %	85 %	82 %

Department's Success Rate

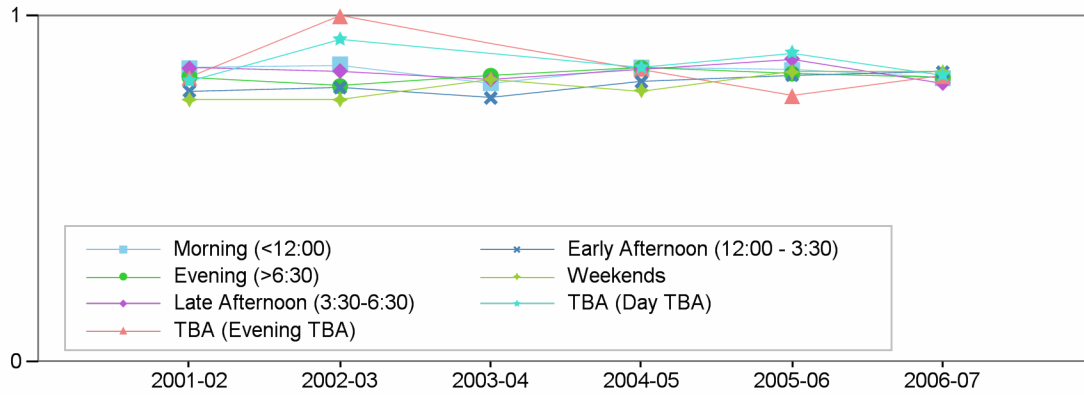


Success Rate =  
 Numerator: Number of enrollments with A,B,C,CR  
 Denominator: Number of enrollments with A,B,C,D,F,CR,NC,W,I

<b>Success Rate</b>	2001-02	2002-03	2003-04	2004-05	2005-06	2006-07
Physical Education (Womens)	65 %	64 %	66 %	70 %	68 %	67 %

## Department Success and Retention Rates by Time of Day

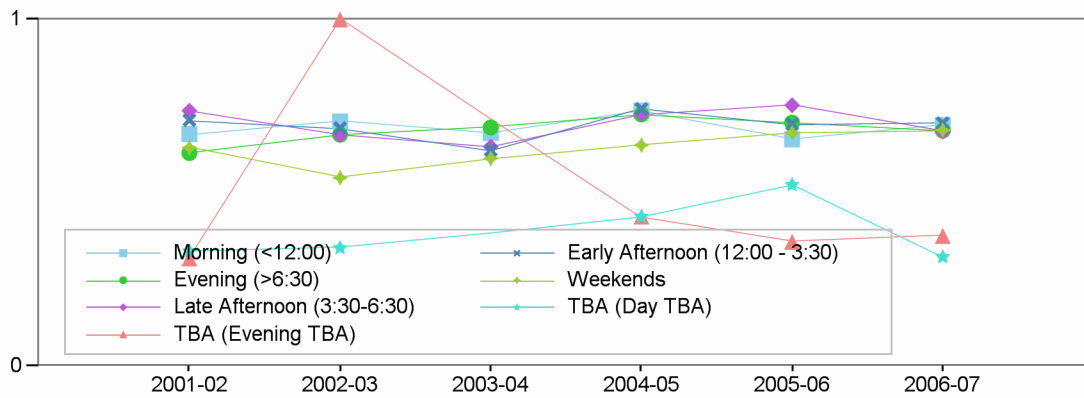
### Retention Rate by Time of Day



#### Retention Rate

	2001-02	2002-03	2003-04	2004-05	2005-06	2006-07
Morning (<12:00)	85 %	86 %	81 %	85 %	84 %	82 %
Evening (>6:30)	82 %	80 %	83 %	85 %	83 %	82 %
Late Afternoon (3:30-6:30)	85 %	84 %	82 %	85 %	88 %	81 %
TBA (Evening TBA)	82 %	100 %	NaN	85 %	77 %	83 %
Early Afternoon (12:00 - 3:30)	78 %	79 %	76 %	81 %	83 %	84 %
Weekends	76 %	76 %	82 %	79 %	84 %	84 %
TBA (Day TBA)	81 %	93 %	NaN	85 %	90 %	83 %

### Success Rate by Time of Day

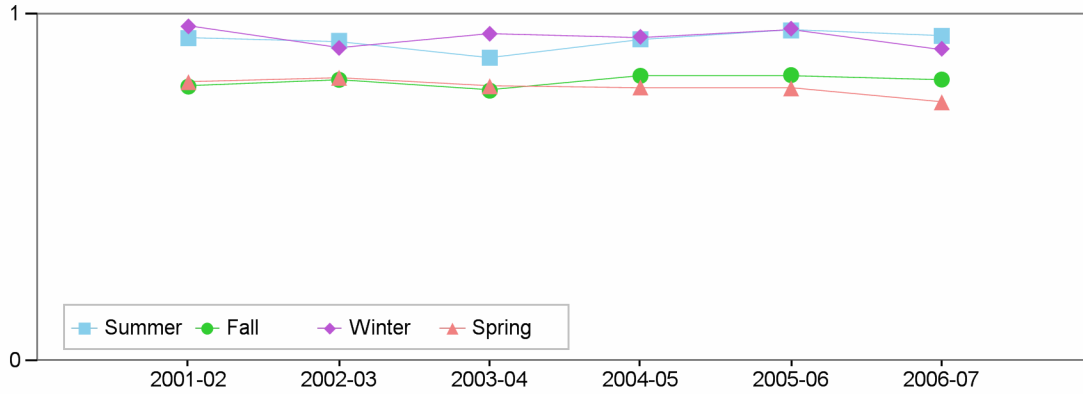


#### Success Rate

	2001-02	2002-03	2003-04	2004-05	2005-06	2006-07
Morning (<12:00)	67 %	71 %	67 %	74 %	65 %	70 %
Evening (>6:30)	61 %	67 %	69 %	73 %	70 %	68 %
Late Afternoon (3:30-6:30)	74 %	67 %	63 %	73 %	75 %	68 %
TBA (Evening TBA)	31 %	100 %	NaN	43 %	36 %	38 %
Early Afternoon (12:00 - 3:30)	71 %	69 %	62 %	74 %	70 %	70 %
Weekends	63 %	54 %	60 %	64 %	67 %	68 %
TBA (Day TBA)	33 %	34 %	NaN	43 %	52 %	32 %

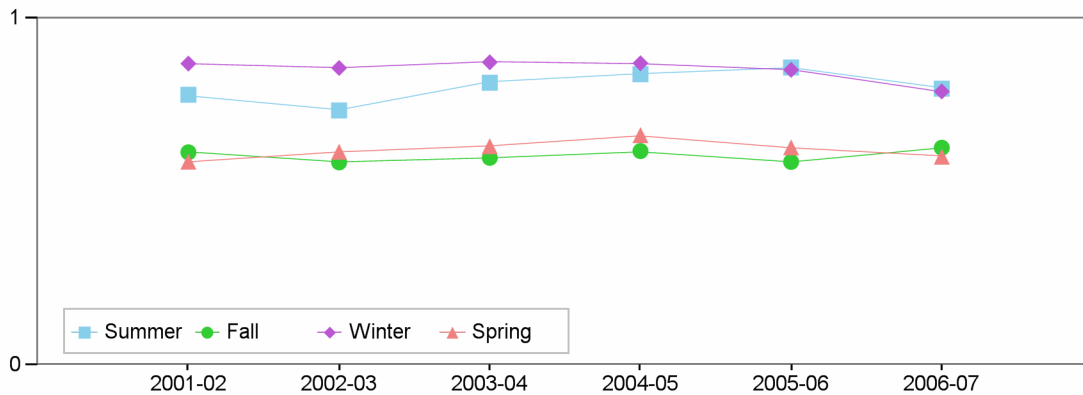
## Department Success and Retention Rates by Term

### Retention Rate by Term



Retention Rate	2001-02	2002-03	2003-04	2004-05	2005-06	2006-07
Summer	93 %	92 %	88 %	93 %	95 %	94 %
Fall	79 %	81 %	78 %	82 %	83 %	81 %
Winter	97 %	90 %	94 %	94 %	96 %	90 %
Spring	80 %	82 %	79 %	79 %	79 %	75 %

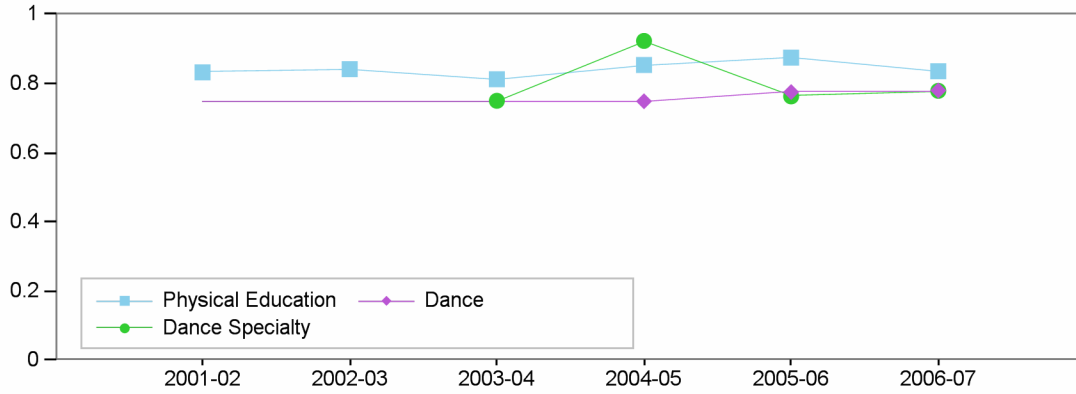
### Success Rate by Term



Success Rate	2001-02	2002-03	2003-04	2004-05	2005-06	2006-07
Summer	78 %	73 %	81 %	84 %	86 %	80 %
Fall	61 %	59 %	60 %	62 %	59 %	63 %
Winter	87 %	86 %	87 %	87 %	85 %	79 %
Spring	59 %	62 %	63 %	66 %	63 %	60 %

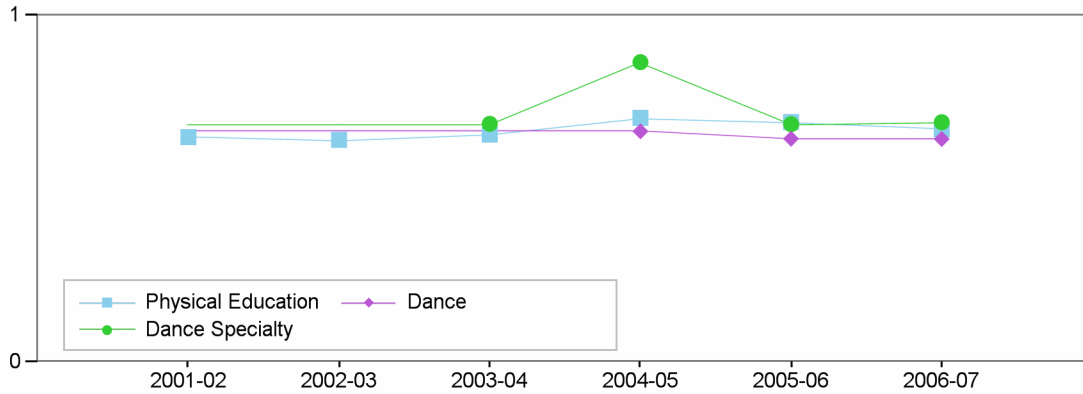
## Department Success and Retention Rates by Discipline

### Retention Rate by Discipline



<b>Retention Rate</b>	2001-02	2002-03	2003-04	2004-05	2005-06	2006-07
Physical Education	83 %	84 %	81 %	85 %	87 %	84 %
Dance Specialty	NaN	NaN	75 %	92 %	76 %	78 %
Dance	NaN	NaN	NaN	75 %	78 %	78 %

### Success Rate by Discipline



<b>Success Rate</b>	2001-02	2002-03	2003-04	2004-05	2005-06	2006-07
Physical Education	65 %	64 %	66 %	70 %	69 %	67 %
Dance Specialty	NaN	NaN	69 %	87 %	69 %	69 %
Dance	NaN	NaN	NaN	67 %	64 %	64 %

**Los Angeles City College  
Comprehensive Program Review 2008**

Department

**Section IIc. Department Overview – Student Achievements**

**Department's Awards by Program**

