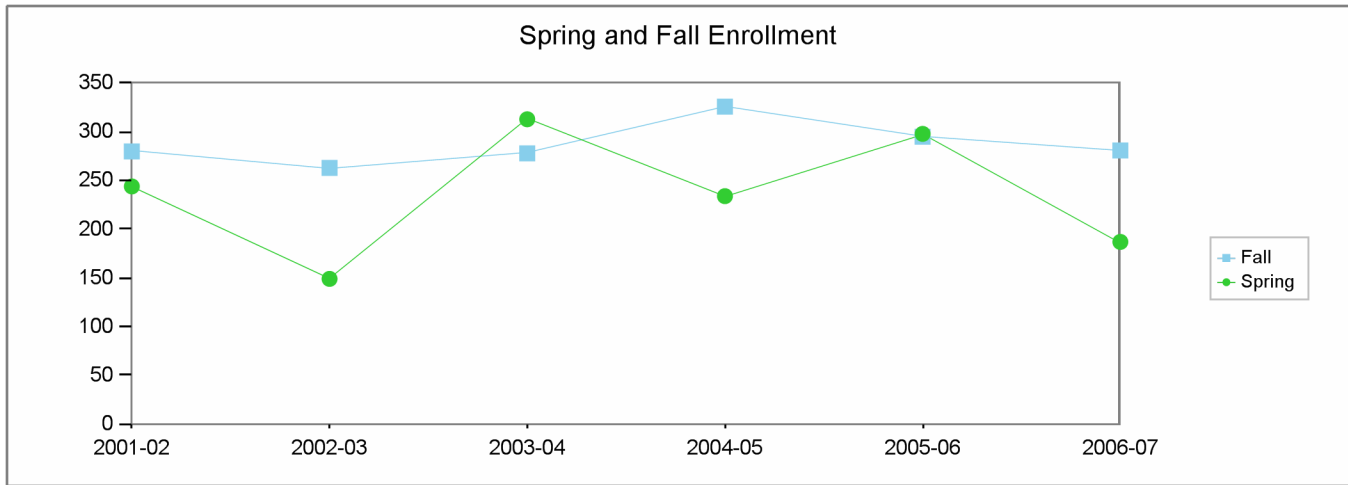


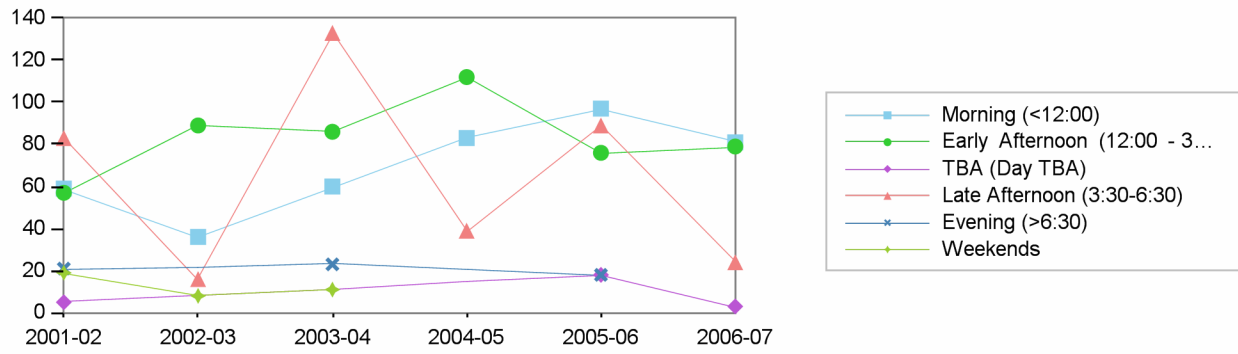
**Los Angeles City College
Comprehensive Program Review 2008**

**Dental Technology Department
Section IIa. Department Overview – Response to Demand: Enrollment**

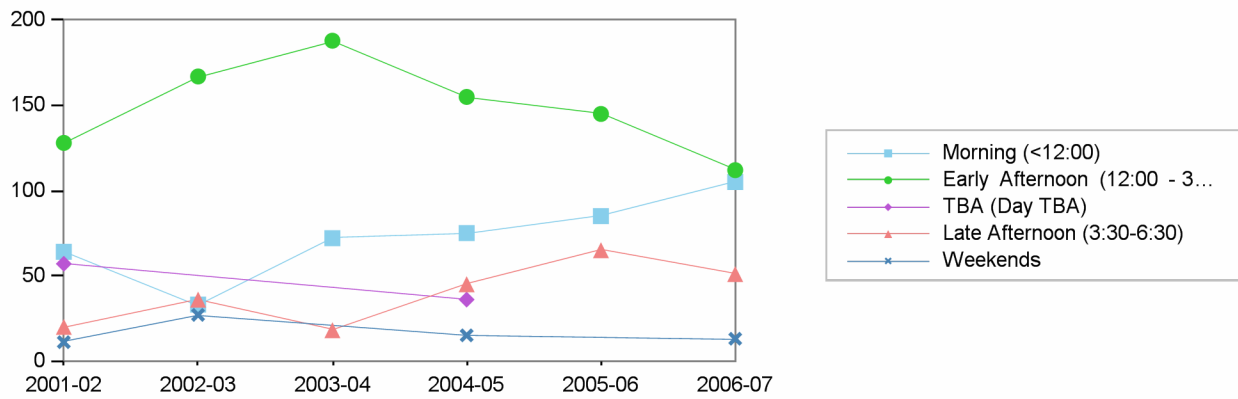


	2001-02	2002-03	2003-04	2004-05	2005-06	2006-07
Fall	280	263	278	326	295	281
Spring	244	149	313	234	298	187

Spring Enrollment by Time of Day



Fall Enrollment by Time of Day



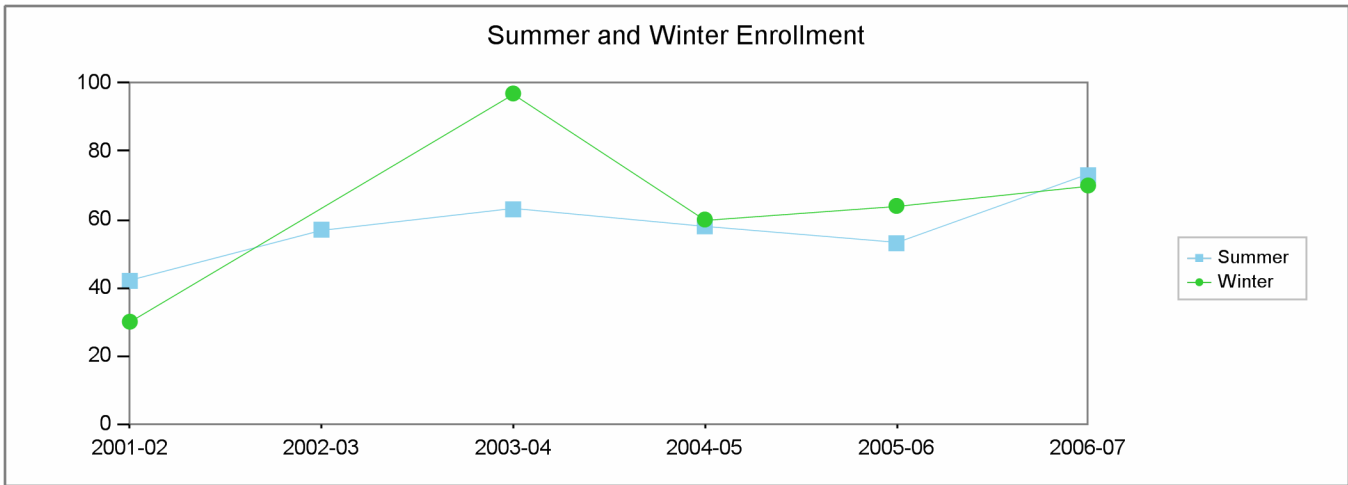
Morning (<12:00) Early Afternoon (12:00 - 3:30) TBA (Day TBA) Late Afternoon (3:30-6:30) Evening (>6:30) Weekends

Fall Spring Fall Spring Fall Spring Fall Spring Spring Fall Spring

2001-02	64	59	128	57	57	5	20	83	21	11	19
2002-03	33	36	167	89			36	16		27	8
2003-04	72	60	188	86			18	133	23		11
2004-05	75	83	155	112	36		45	39		15	
2005-06	85	97	145	76		18	65	89	18		
2006-07	105	81	112	79		3	51	24		13	

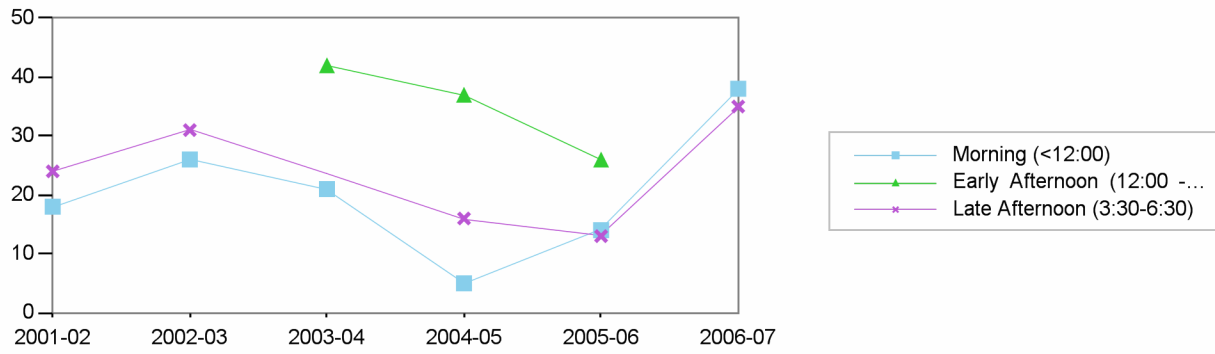
**Los Angeles City College
Comprehensive Program Review 2008**

**Dental Technology Department
Section IIa. Department Overview – Response to Demand: Enrollment**

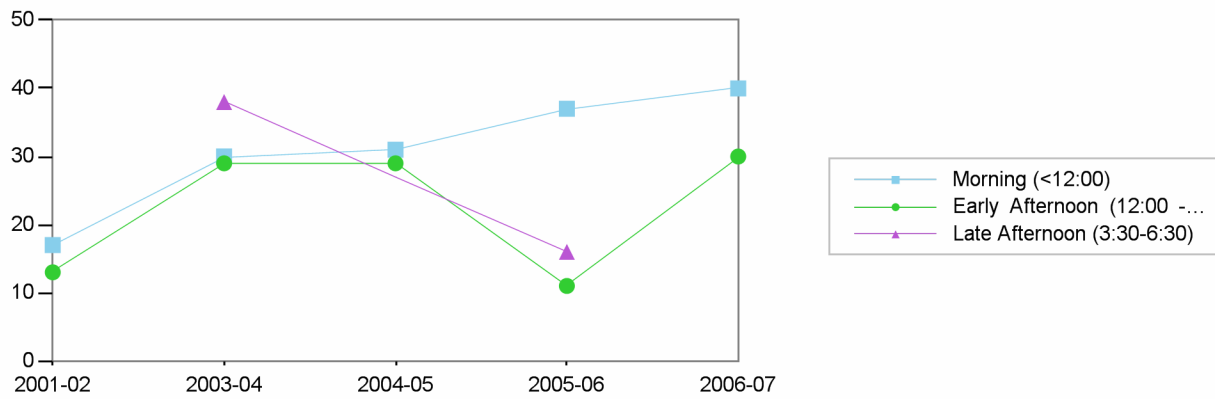


	2001-02	2002-03	2003-04	2004-05	2005-06	2006-07
Summer	42	57	63	58	53	73
Winter	30		97	60	64	70

Summer Enrollment by Time of Day



Winter Enrollment by Time of Day



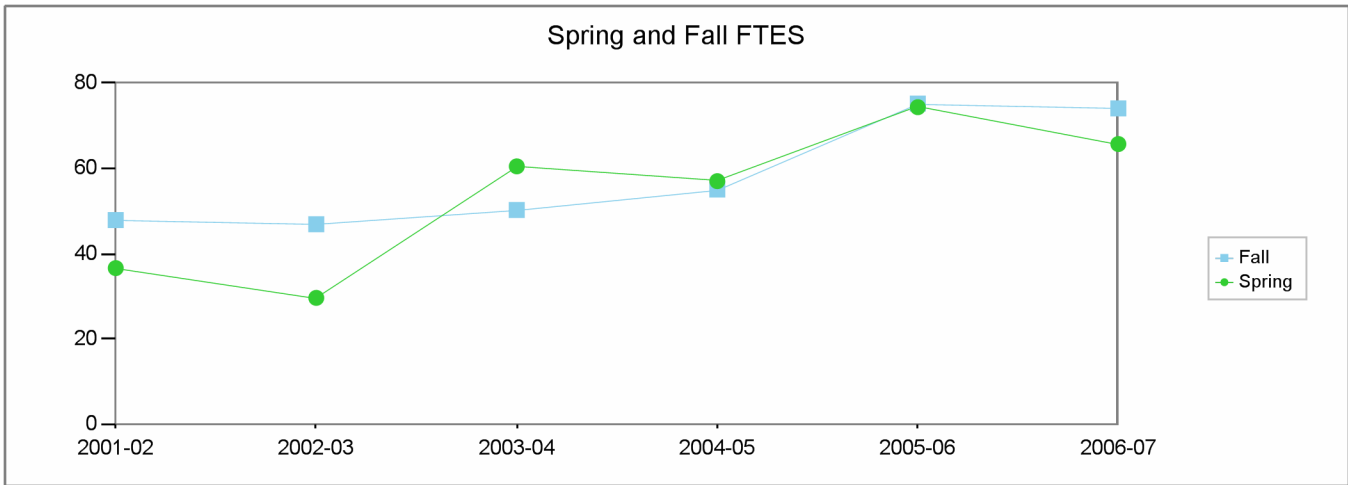
Morning (<12:00) Early Afternoon (12:00 - 3:30) Late Afternoon (3:30-6:30)

Summer Winter Winter Summer Summer Winter

2001-02	18	17	13		24	
2002-03	26				31	
2003-04	21	30	29	42		38
2004-05	5	31	29	37	16	
2005-06	14	37	11	26	13	16
2006-07	38	40	30		35	

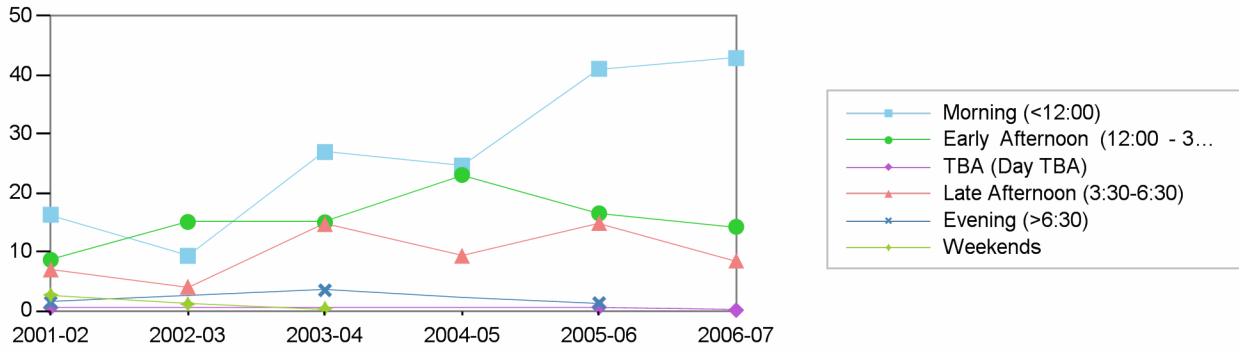
**Los Angeles City College
Comprehensive Program Review 2008**

**Dental Technology Department
Section IIa. Department Overview – Response to Demand: FTES**

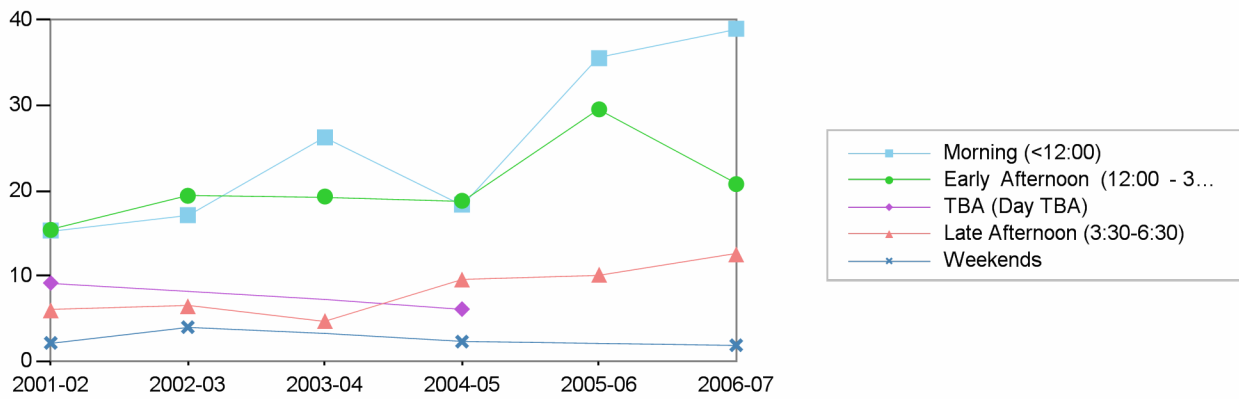


	2001-02	2002-03	2003-04	2004-05	2005-06	2006-07
Fall	48	47	50	55	75	74
Spring	37	30	60	57	74	66

Spring FTES by Time of Day



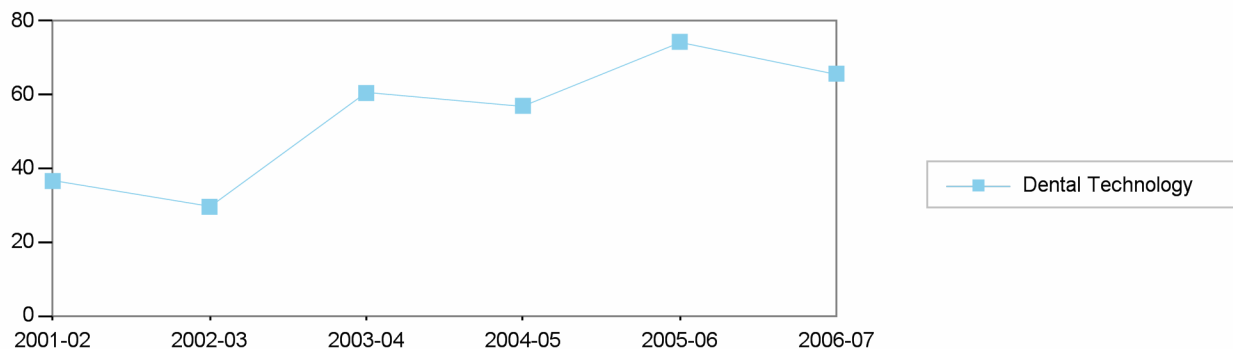
Fall FTES by Time of Day



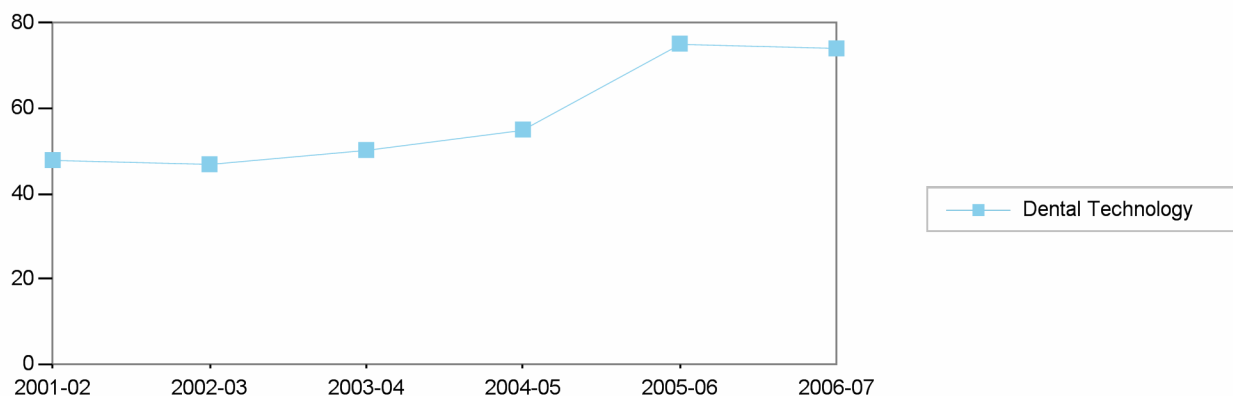
Morning (<12:00) Early Afternoon (12:00 - 3:30) TBA (Day TBA) Late Afternoon (3:30-6:30) Evening (>6:30) Weekends

	Fall	Spring	Fall	Spring	Fall	Spring	Fall	Spring	Spring	Fall	Spring
2001-02	15	16	15	9	9	1	6	7	1	2	3
2002-03	17	9	19	15			6	4		4	1
2003-04	26	27	19	15			5	15	3		0
2004-05	18	25	19	23	6		10	9		2	
2005-06	36	41	30	17		1	10	15	1		
2006-07	39	43	21	14		0	13	9		2	

Spring FTES by Discipline



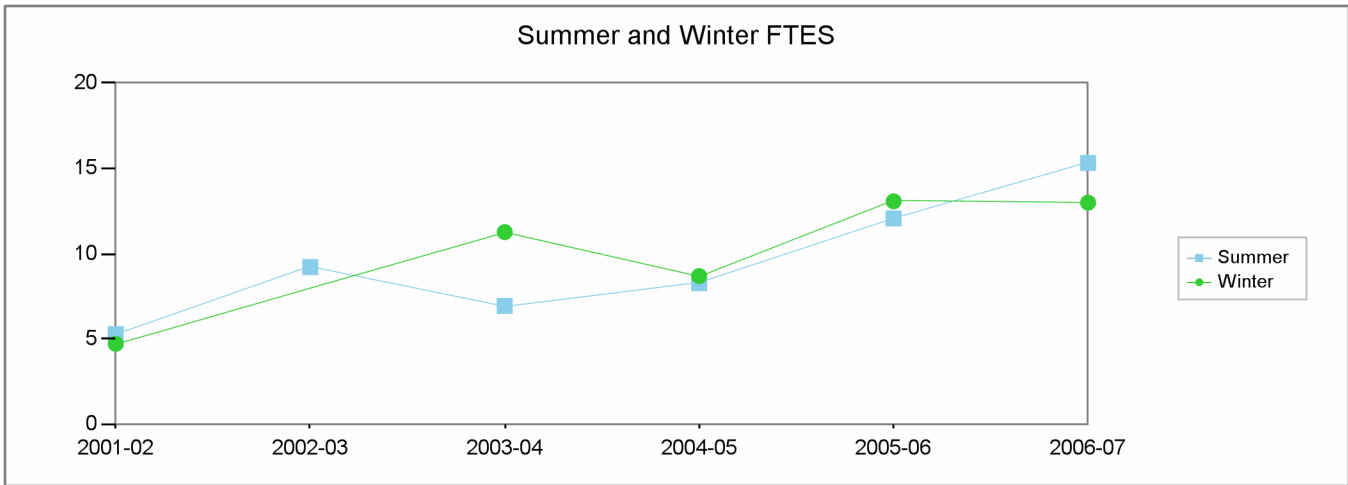
Fall FTES by Discipline



		2001-02	2002-03	2003-04	2004-05	2005-06	2006-07
Fall	Dental Technology	48	47	50	55	75	74
Spring	Dental Technology	37	30	60	57	74	66

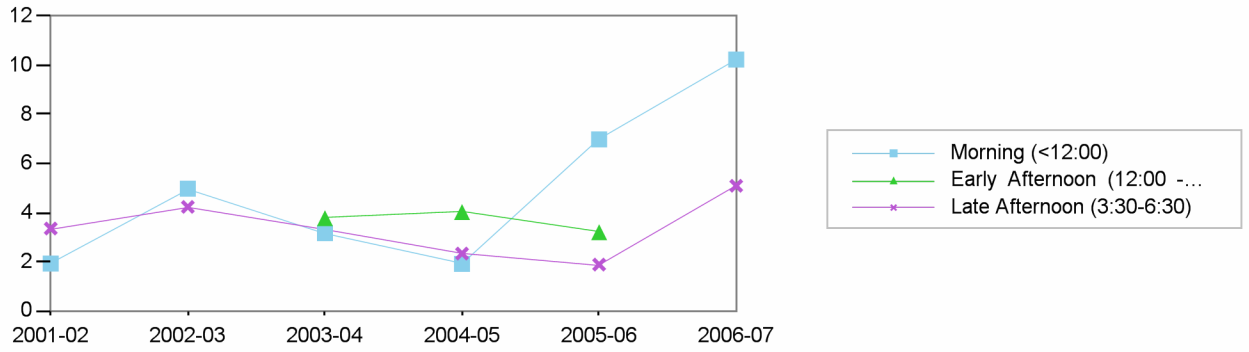
**Los Angeles City College
Comprehensive Program Review 2008**

**Dental Technology Department
Section IIa. Department Overview – Response to Demand: FTES**

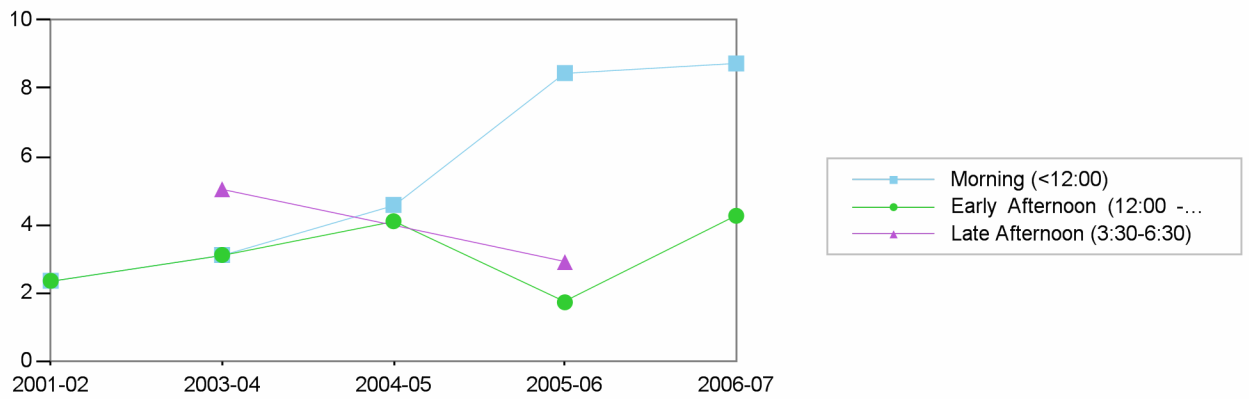


	2001-02	2002-03	2003-04	2004-05	2005-06	2006-07
Summer	5	9	7	8	12	15
Winter	5		11	9	13	13

Summer FTES by Time of Day



Winter FTES by Time of Day

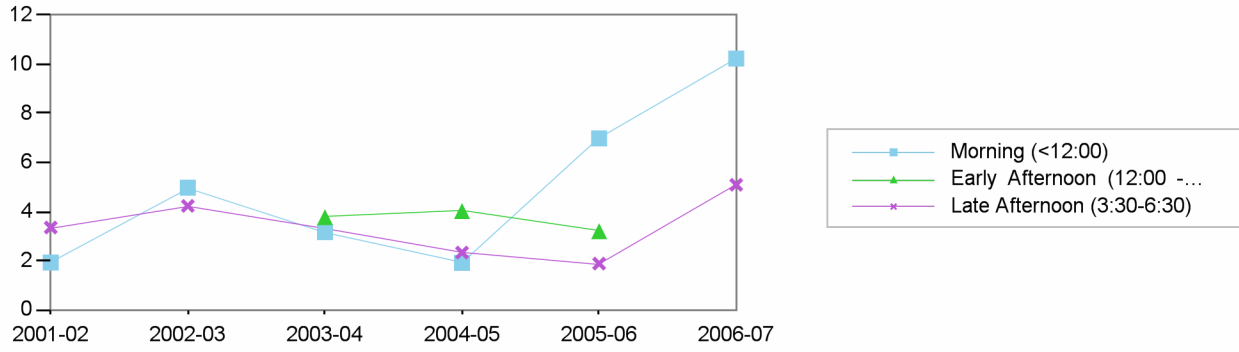


Morning (<12:00) Early Afternoon (12:00 - 3:30) Late Afternoon (3:30-6:30)

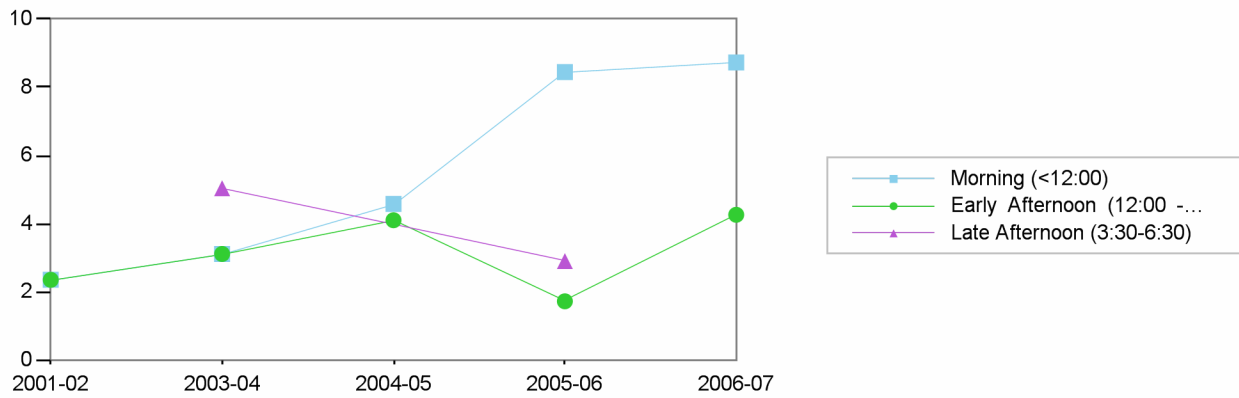
Summer Winter Winter Summer Summer Winter

2001-02	2	2	2		3	
2002-03	5				4	
2003-04	3	3	3	4		5
2004-05	2	5	4	4	2	
2005-06	7	8	2	3	2	3
2006-07	10	9	4		5	

Summer FTES by Time of Day



Winter FTES by Time of Day

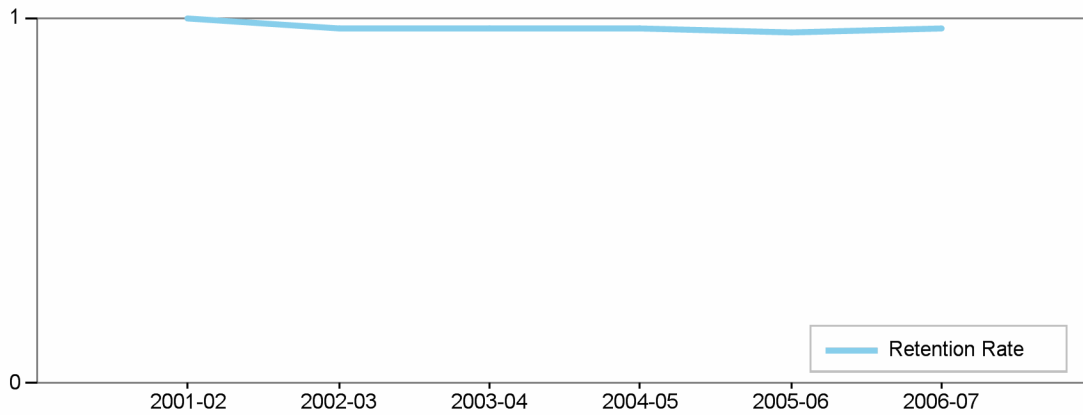


		2001-02	2002-03	2003-04	2004-05	2005-06	2006-07
Summer	Dental Technology	5	9	7	8	12	15
Winter	Dental Technology	5		11	9	13	13

Los Angeles City College
Comprehensive Program Review 2008

Dental Technology Department
Section IIc. Department Overview – Student Achievements

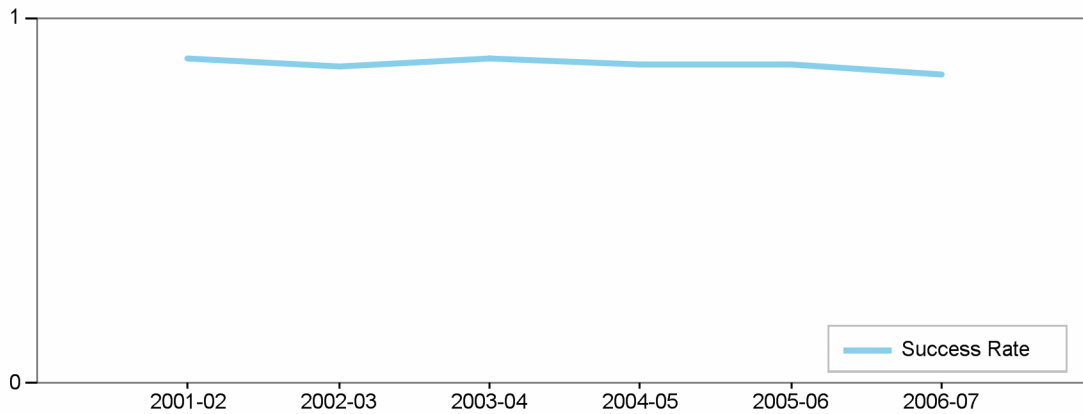
Department's Retention Rate



Retention Rate=
 Numerator: Number of enrollments with A,B,C,D,F,CR,NC,I
 Denominator: Number of enrollments with A,B,C,D,F,CR,NC,W,I

Retention Rate	2001-02	2002-03	2003-04	2004-05	2005-06	2006-07
Dental Technology	99 %	97 %	97 %	97 %	96 %	97 %

Department's Success Rate

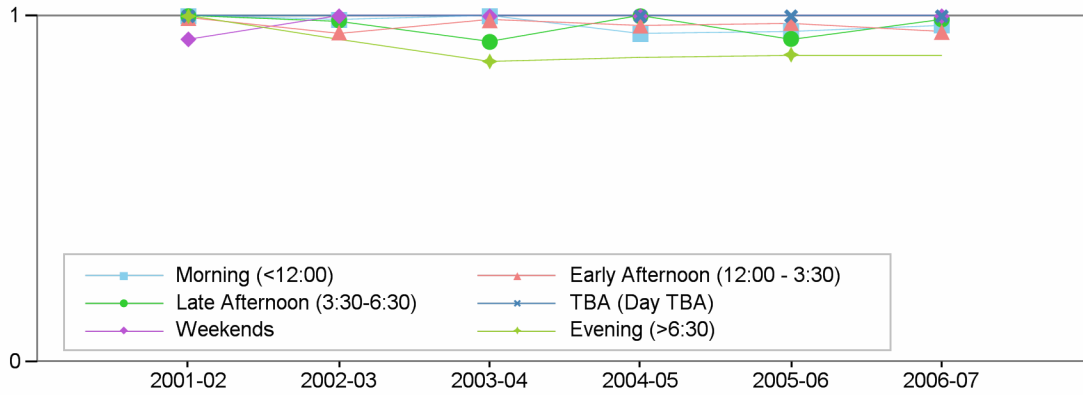


Success Rate =
 Numerator: Number of enrollments with A,B,C,CR
 Denominator: Number of enrollments with A,B,C,D,F,CR,NC,W,I

Success Rate	2001-02	2002-03	2003-04	2004-05	2005-06	2006-07
Dental Technology	89 %	87 %	89 %	87 %	87 %	85 %

Department Success and Retention Rates by Time of Day

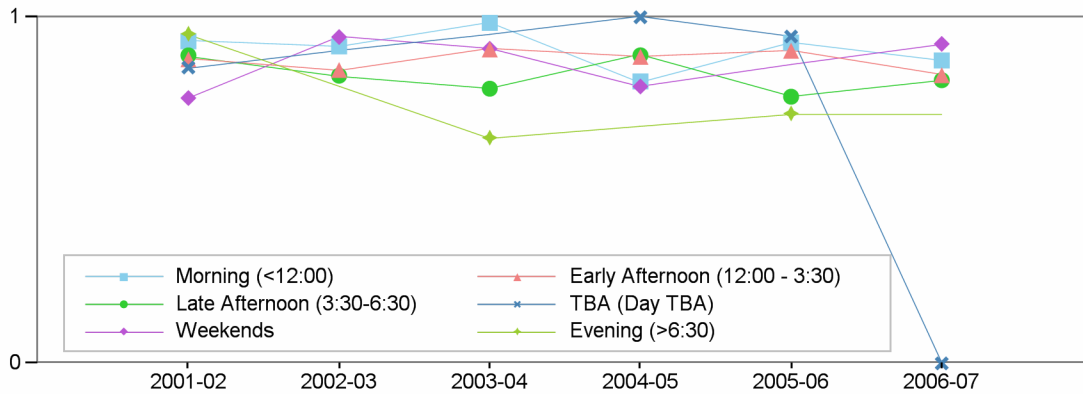
Retention Rate by Time of Day



Retention Rate

	2001-02	2002-03	2003-04	2004-05	2005-06	2006-07
Morning (<12:00)	100 %	99 %	100 %	95 %	96 %	97 %
Late Afternoon (3:30-6:30)	100 %	99 %	93 %	100 %	93 %	99 %
Weekends	93 %	100 %	100 %	100 %	NaN	100 %
Early Afternoon (12:00 - 3:30)	99 %	95 %	99 %	97 %	98 %	95 %
TBA (Day TBA)	100 %	NaN	NaN	100 %	100 %	100 %
Evening (>6:30)	100 %	NaN	87 %	NaN	89 %	NaN

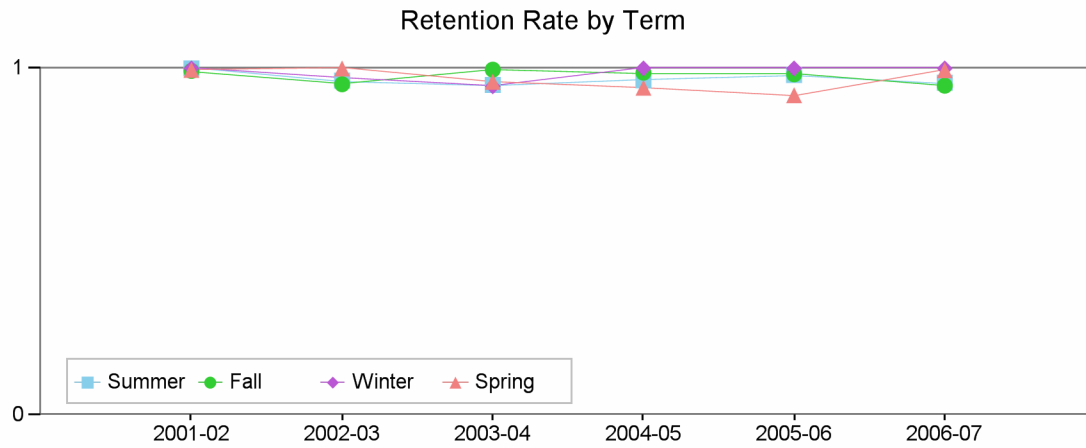
Success Rate by Time of Day



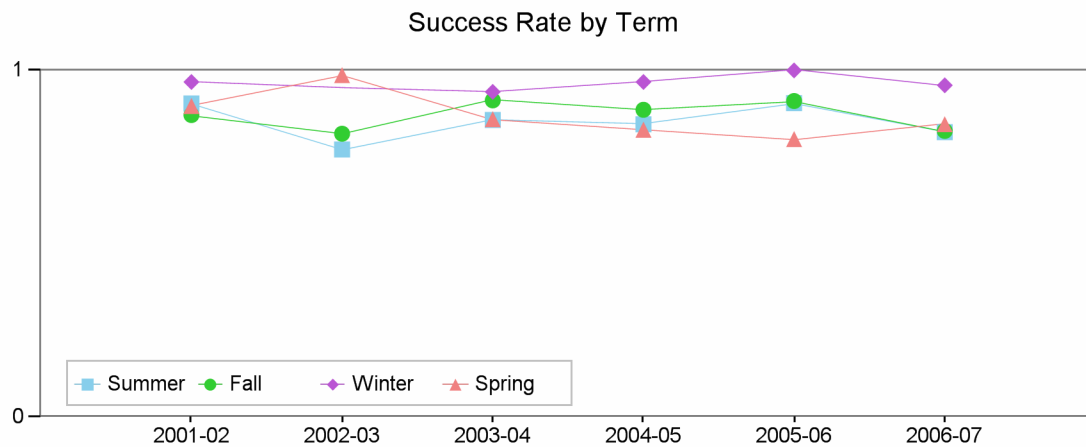
Success Rate

	2001-02	2002-03	2003-04	2004-05	2005-06	2006-07
Morning (<12:00)	93 %	92 %	98 %	81 %	93 %	88 %
Late Afternoon (3:30-6:30)	89 %	83 %	79 %	89 %	77 %	82 %
Weekends	77 %	94 %	91 %	80 %	NaN	92 %
Early Afternoon (12:00 - 3:30)	88 %	85 %	91 %	89 %	90 %	83 %
TBA (Day TBA)	85 %	NaN	NaN	100 %	94 %	0 %
Evening (>6:30)	95 %	NaN	65 %	NaN	72 %	NaN

Department Success and Retention Rates by Term



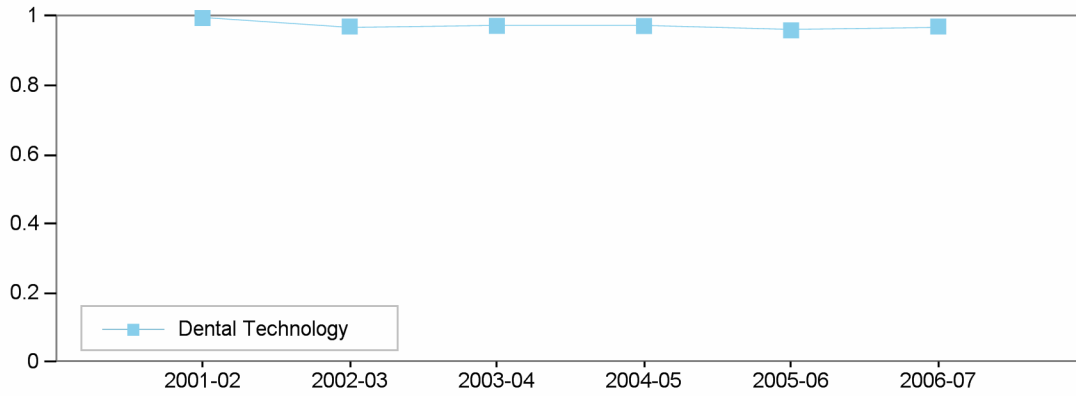
Retention Rate	2001-02	2002-03	2003-04	2004-05	2005-06	2006-07
Summer	100 %	96 %	95 %	97 %	98 %	96 %
Fall	99 %	95 %	100 %	99 %	98 %	95 %
Winter	100 %	NaN	95 %	100 %	100 %	100 %
Spring	100 %	100 %	96 %	94 %	92 %	99 %



Success Rate	2001-02	2002-03	2003-04	2004-05	2005-06	2006-07
Summer	90 %	77 %	86 %	84 %	91 %	82 %
Fall	87 %	82 %	91 %	89 %	91 %	83 %
Winter	97 %	NaN	94 %	97 %	100 %	96 %
Spring	90 %	99 %	86 %	83 %	80 %	84 %

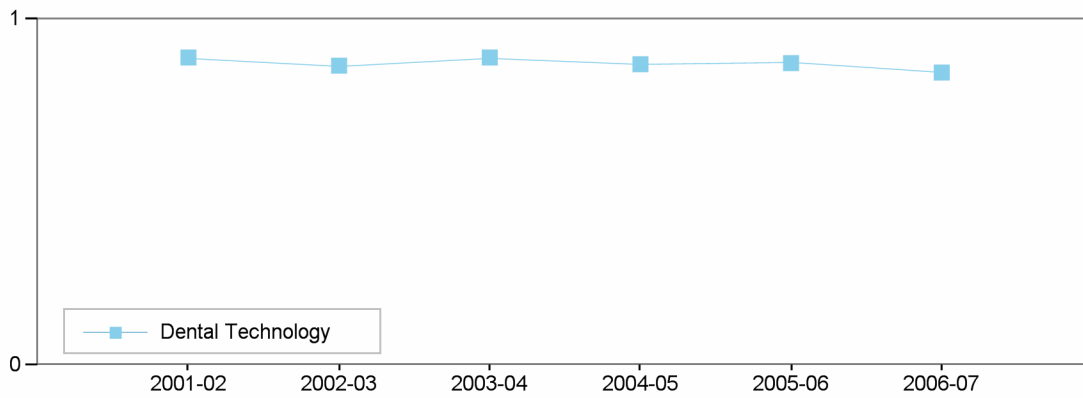
Department Success and Retention Rates by Discipline

Retention Rate by Discipline



Retention Rate	2001-02	2002-03	2003-04	2004-05	2005-06	2006-07
Dental Technology	99 %	97 %	97 %	97 %	96 %	97 %

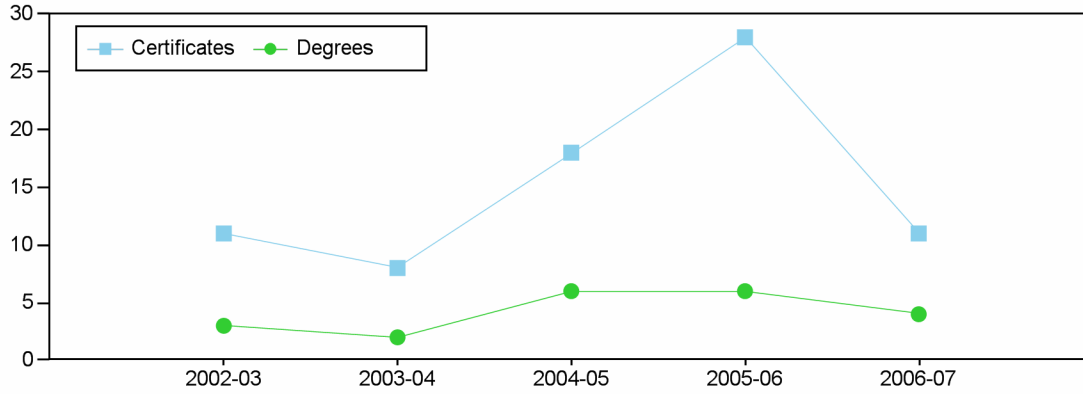
Success Rate by Discipline



Success Rate	2001-02	2002-03	2003-04	2004-05	2005-06	2006-07
Dental Technology	89 %	87 %	89 %	87 %	87 %	85 %

Los Angeles City College
Comprehensive Program Review 2008
Dental Technology Department
Section IIc. Department Overview – Student Achievements

Department's Degrees and Certificates



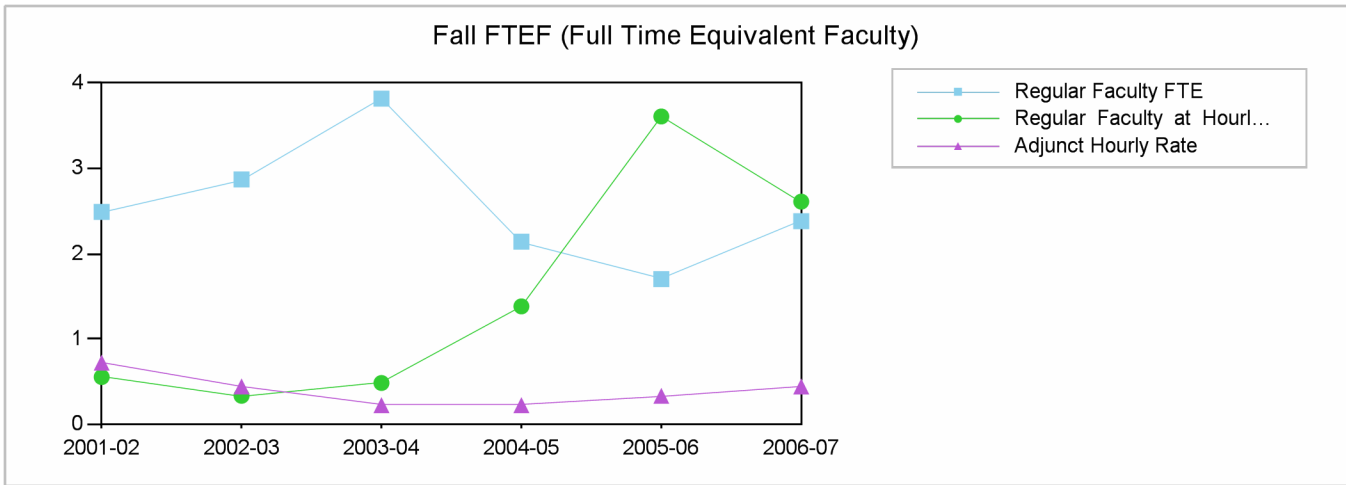
	2002-03	2003-04	2004-05	2005-06	2006-07
Degrees	3	2	6	6	4
Certificates	11	8	18	28	11
Total	14	10	24	34	15

Department's Awards by Program

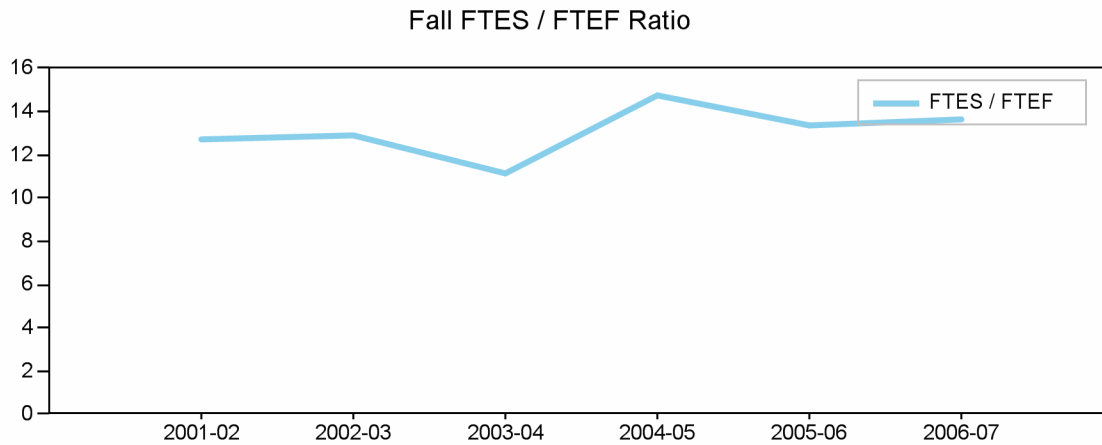
		2002-03	2003-04	2004-05	2005-06	2006-07
Degrees	Dental Technology	3	2	6	6	4
	Total	3	2	6	6	4
Certificates	Dental Technology	11	8	18	28	11
	Total	11	8	18	28	11

**Los Angeles City College
Comprehensive Program Review 2008**

**Dental Technology Department
Section IId. Department Overview – FTEF**

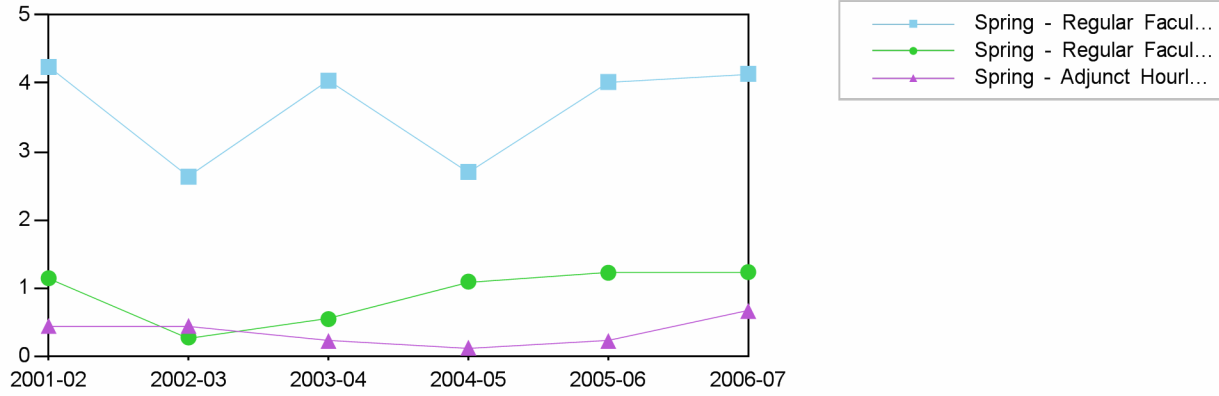


Fall	2001-02	2002-03	2003-04	2004-05	2005-06	2006-07
Regular Faculty FTE	2.49	2.87	3.82	2.14	1.7	2.38
Regular Faculty at Hourly Rate	0.55	0.33	0.48	1.38	3.61	2.61
Adjunct Hourly Rate	0.72	0.44	0.22	0.22	0.33	0.44
Total	3.76	3.64	4.52	3.74	5.64	5.43



Fall	2001-02	2002-03	2003-04	2004-05	2005-06	2006-07
Total FTEF	3.76	3.64	4.52	3.74	5.64	5.43
Total FTES	47.88	46.88	50.23	55.04	75.21	74.11
FTES / FTEF	12.7	12.9	11.1	14.7	13.3	13.6

Spring FTEF (Full Time Equivalent Faculty)



Spring

2001-02 2002-03 2003-04 2004-05 2005-06 2006-07

Spring Spring Spring Spring Spring Spring

Regular Faculty FTE

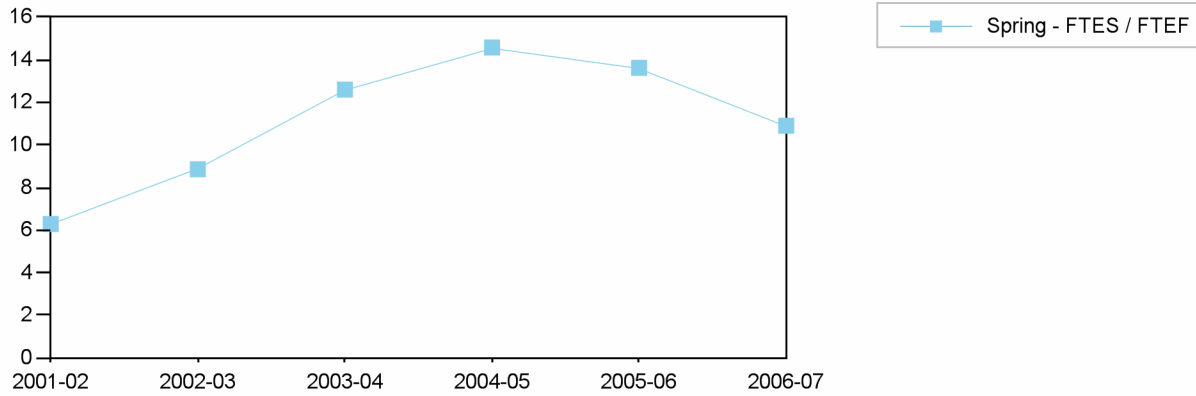
Regular Faculty FTE	4.24	2.63	4.04	2.7	4.02	4.14
Regular Faculty at Hourly Rate	1.14	0.27	0.54	1.09	1.22	1.23
Adjunct Hourly Rate	0.44	0.44	0.22	0.12	0.22	0.66
Total	5.82	3.34	4.8	3.91	5.46	6.03

Regular Faculty at Hourly Rate

Adjunct Hourly Rate

Total

Spring FTES / FTEF Ratio



Spring

2001-02 2002-03 2003-04 2004-05 2005-06 2006-07

Spring Spring Spring Spring Spring Spring

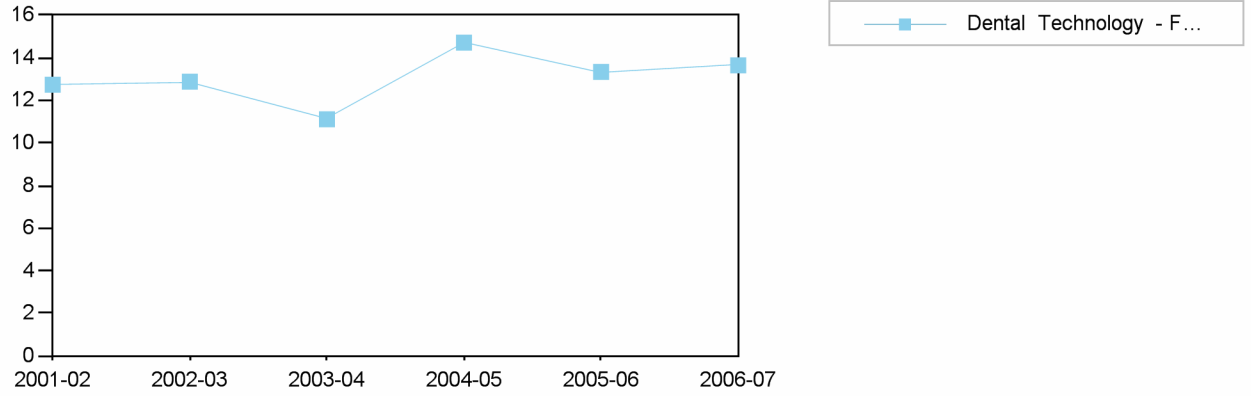
Total FTEF

Total FTEF	5.82	3.34	4.8	3.91	5.46	6.03
Total FTES	36.59	29.6	60.49	57.01	74.38	65.73
FTES / FTEF	6.3	8.9	12.6	14.6	13.6	10.9

Total FTES

FTES / FTEF

Fall FTES / FTEF Ratio by Discipline



2001-02 2002-03 2003-04 2004-05 2005-06 2006-07

Dental Technology

Total FTEF	3.76	3.64	4.52	3.74	5.64	5.43
Total FTES	47.88	46.88	50.23	55.04	75.21	74.11
FTES / FTEF	12.7	12.9	11.1	14.7	13.3	13.6