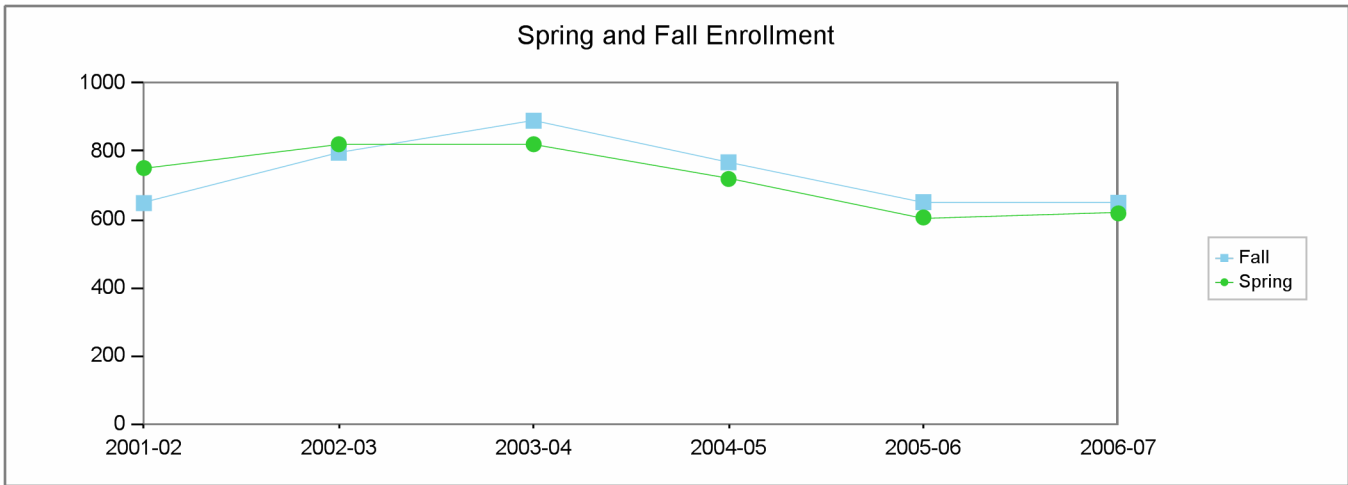


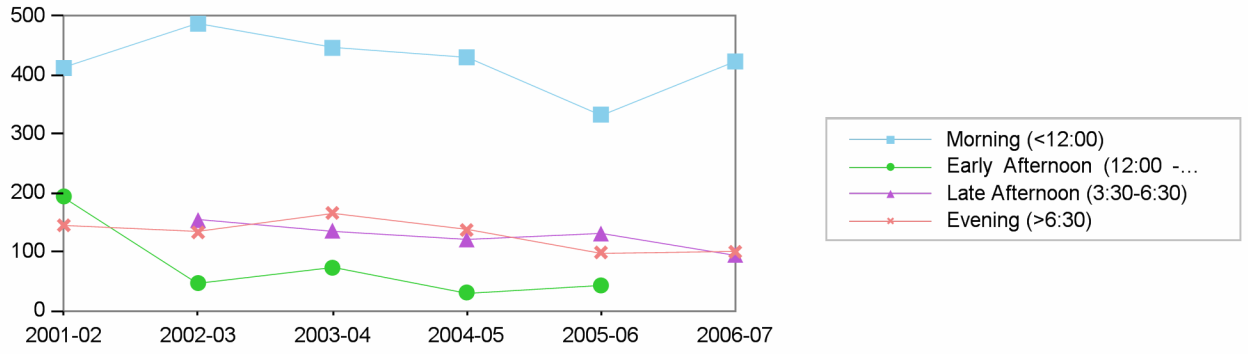
**Los Angeles City College  
Comprehensive Program Review 2008**

**Philosophy Department  
Section IIa. Department Overview – Response to Demand: Enrollment**

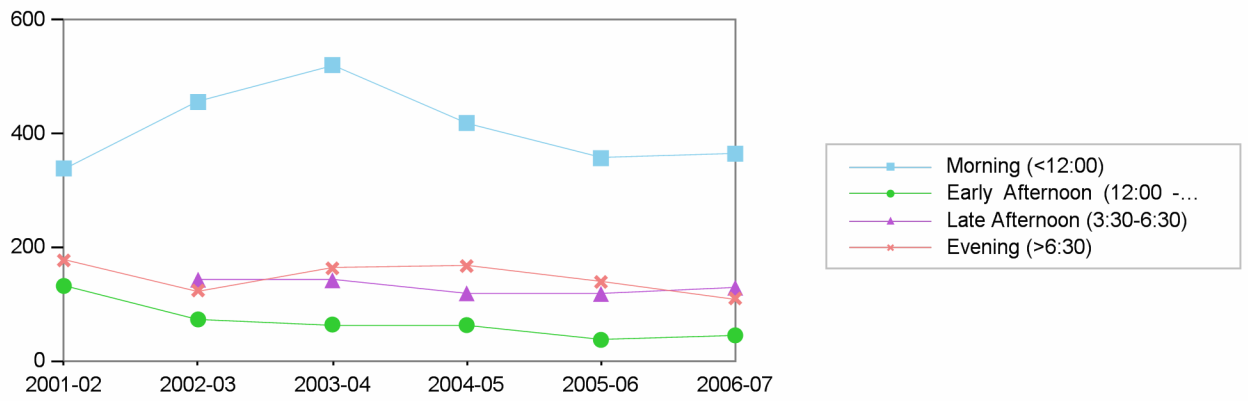


	2001-02	2002-03	2003-04	2004-05	2005-06	2006-07
Fall	648	796	890	768	651	649
Spring	751	821	821	719	606	618

Spring Enrollment by Time of Day



Fall Enrollment by Time of Day

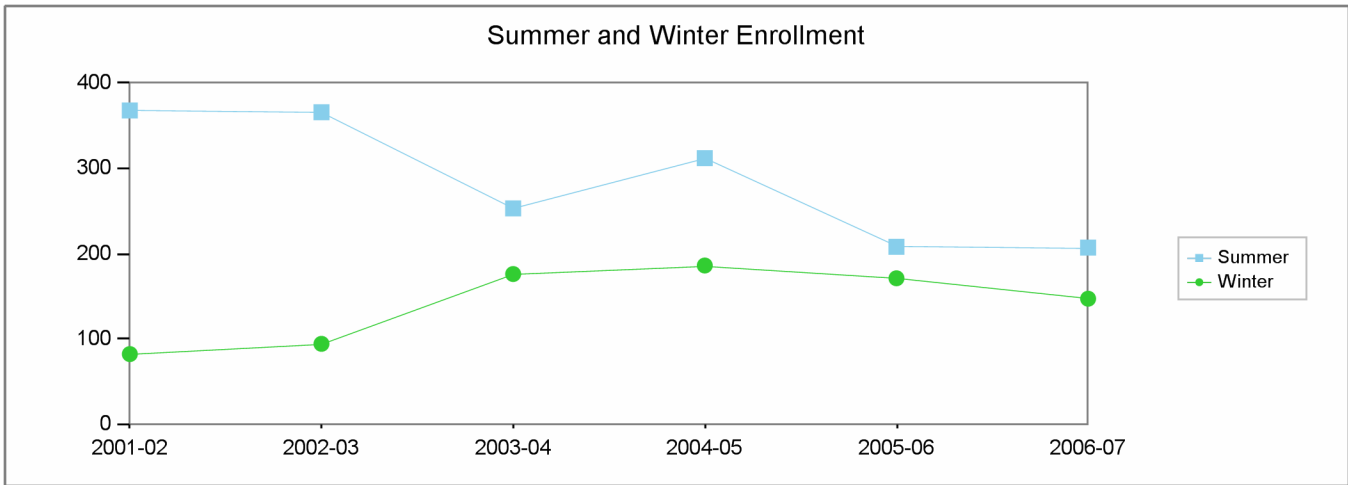


Morning (<12:00)    Early Afternoon (12:00 - 3:30)    Late Afternoon (3:30-6:30)    Evening (>6:30)

	Fall	Spring	Fall	Spring	Fall	Spring	Fall	Spring
2001-02	339	412	132	194			177	145
2002-03	456	487	73	47	143	154	124	133
2003-04	521	446	64	73	142	136	163	166
2004-05	419	430	63	31	119	121	167	137
2005-06	357	333	37	43	118	131	139	99
2006-07	365	423	45		129	95	110	100

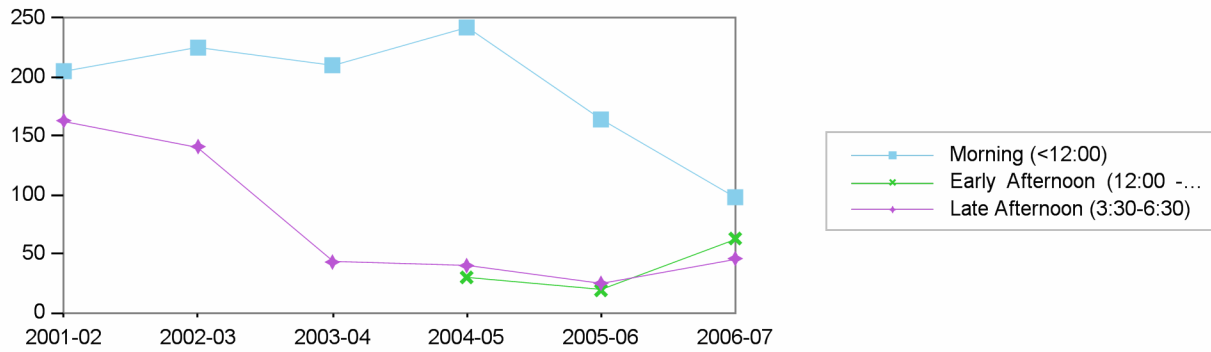
Los Angeles City College  
Comprehensive Program Review 2008

Philosophy Department  
Section IIa. Department Overview – Response to Demand: Enrollment

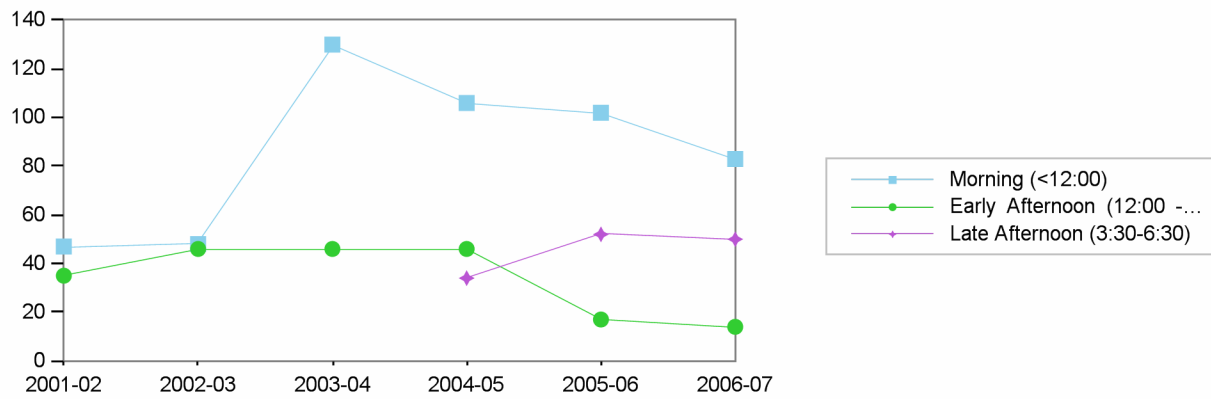


	2001-02	2002-03	2003-04	2004-05	2005-06	2006-07
Summer	368	366	253	312	208	207
Winter	82	94	176	186	171	147

### Summer Enrollment by Time of Day



### Winter Enrollment by Time of Day

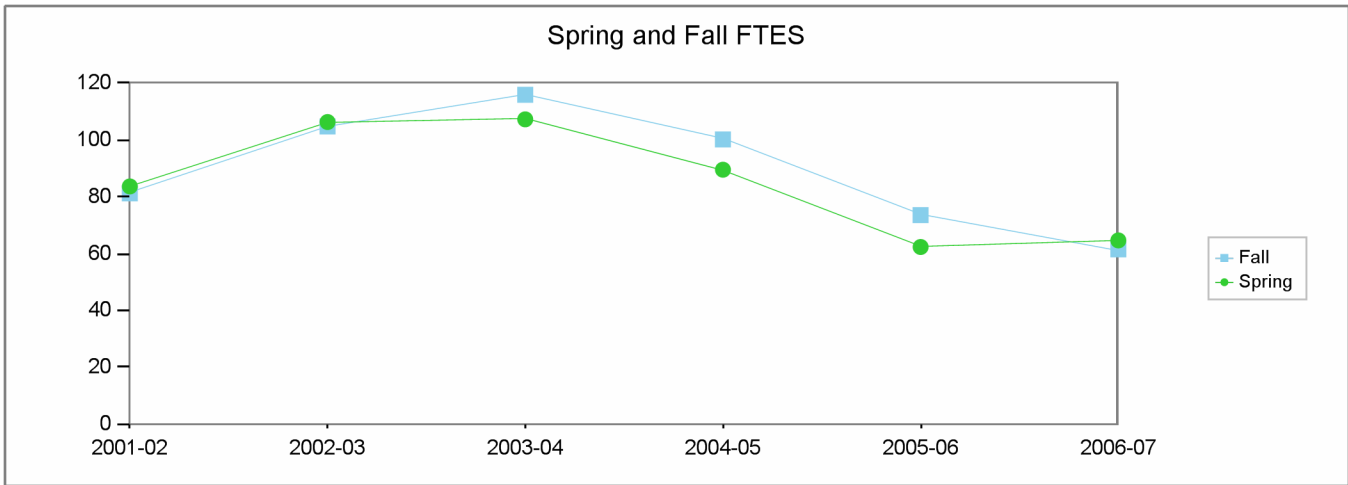


■ Morning (<12:00)    
 ● Early Afternoon (12:00 - 3:30)    
 ◆ Late Afternoon (3:30-6:30)

	Summer	Winter	Winter	Summer	Summer	Winter
2001-02	205	47	35		163	
2002-03	225	48	46		141	
2003-04	210	130	46		43	
2004-05	242	106	46	30	40	34
2005-06	164	102	17	19	25	52
2006-07	98	83	14	63	46	50

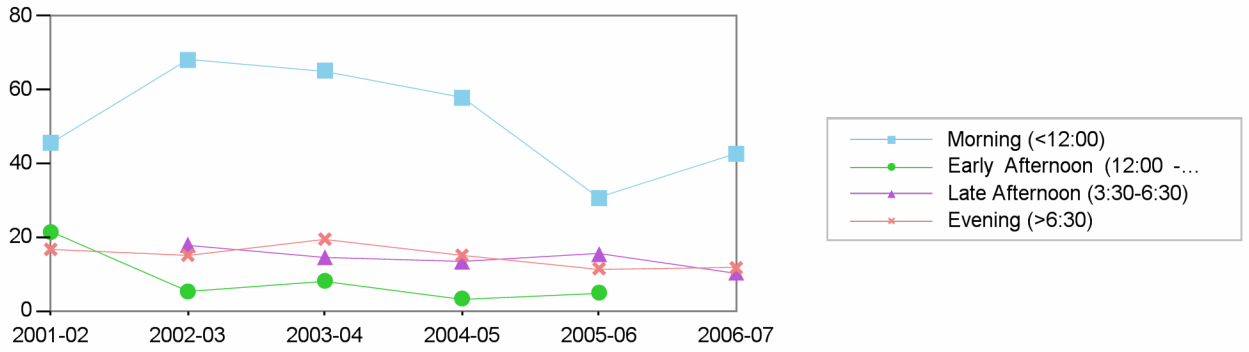
**Los Angeles City College  
Comprehensive Program Review 2008**

**Philosophy Department  
Section IIa. Department Overview – Response to Demand: FTES**



	2001-02	2002-03	2003-04	2004-05	2005-06	2006-07
Fall	81	105	116	100	74	61
Spring	84	106	107	90	62	65

Spring FTES by Time of Day



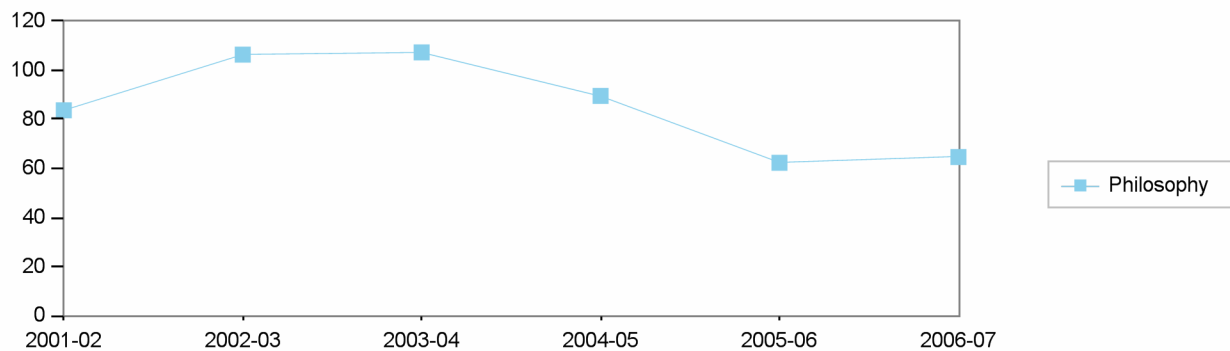
Fall FTES by Time of Day



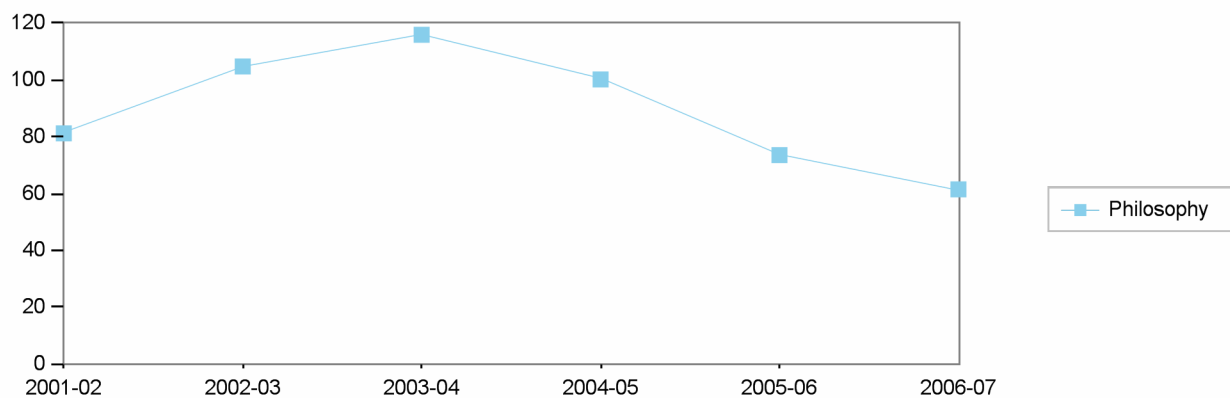
Morning (<12:00)    Early Afternoon (12:00 - 3:30)    Late Afternoon (3:30-6:30)    Evening (>6:30)

	Fall	Spring	Fall	Spring	Fall	Spring	Fall	Spring
2001-02	46	46	15	21			20	17
2002-03	66	68	8	5	16	18	15	15
2003-04	76	65	7	8	16	15	16	19
2004-05	61	58	7	3	13	13	19	15
2005-06	40	31	4	5	13	15	17	11
2006-07	29	43	5		14	10	13	12

Spring FTES by Discipline



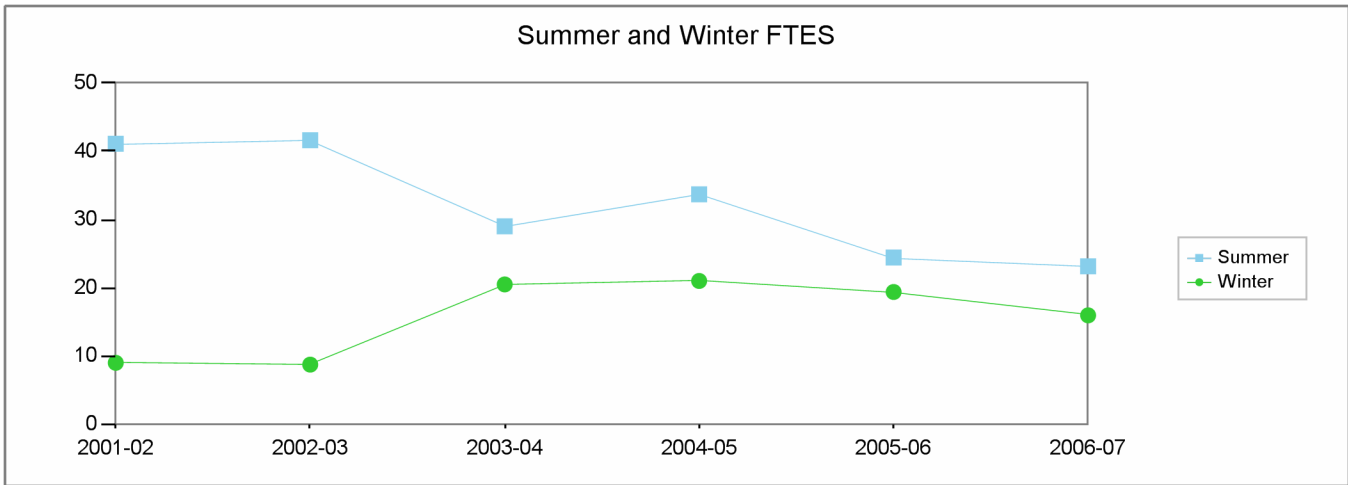
Fall FTES by Discipline



		2001-02	2002-03	2003-04	2004-05	2005-06	2006-07
Fall	Philosophy	81	105	116	100	74	61
Spring	Philosophy	84	106	107	90	62	65

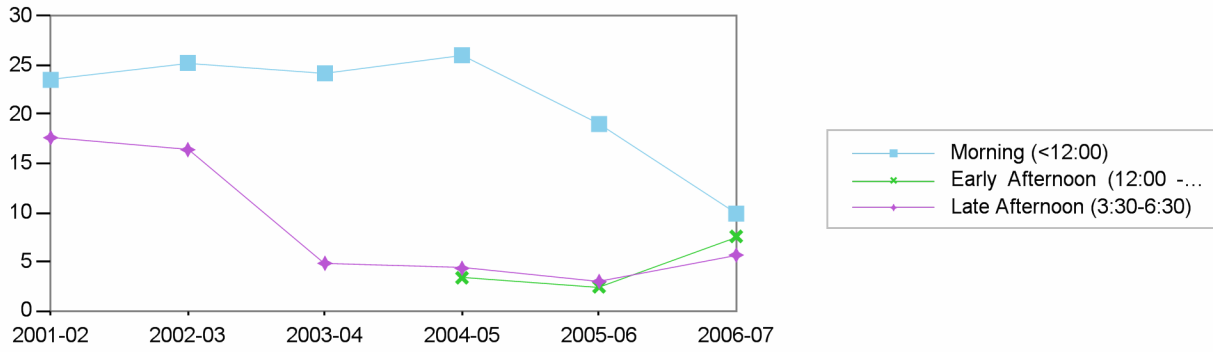
**Los Angeles City College**  
**Comprehensive Program Review 2008**

**Philosophy Department**  
**Section IIa. Department Overview – Response to Demand: FTES**

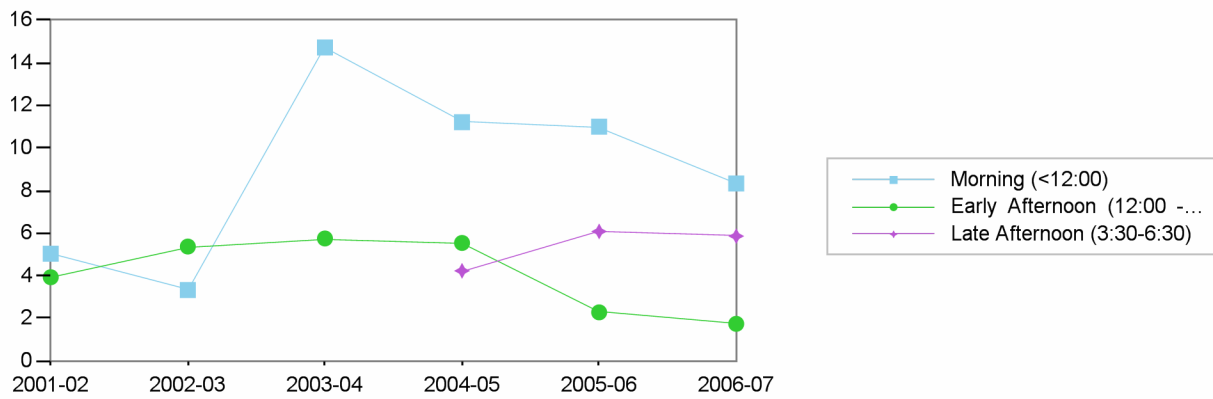


	2001-02	2002-03	2003-04	2004-05	2005-06	2006-07
Summer	41	42	29	34	24	23
Winter	9	9	20	21	19	16

Summer FTES by Time of Day



Winter FTES by Time of Day

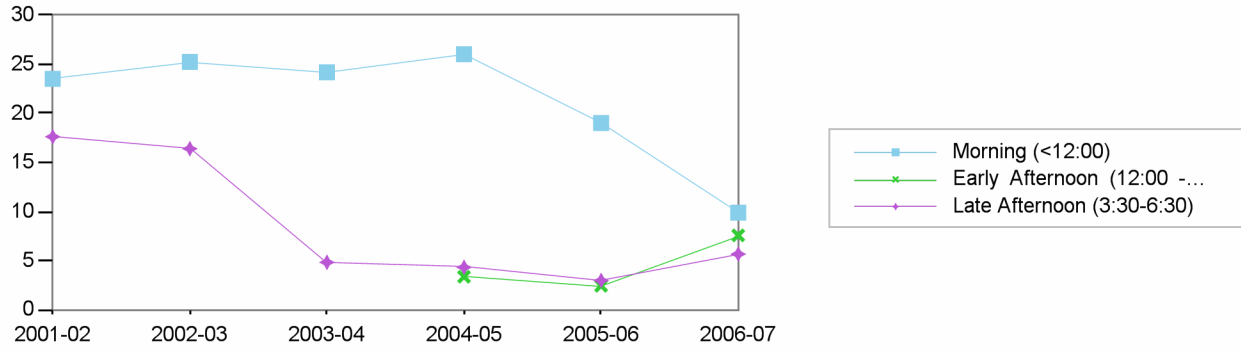


Morning (<12:00)    Early Afternoon (12:00 - 3:30)    Late Afternoon (3:30-6:30)

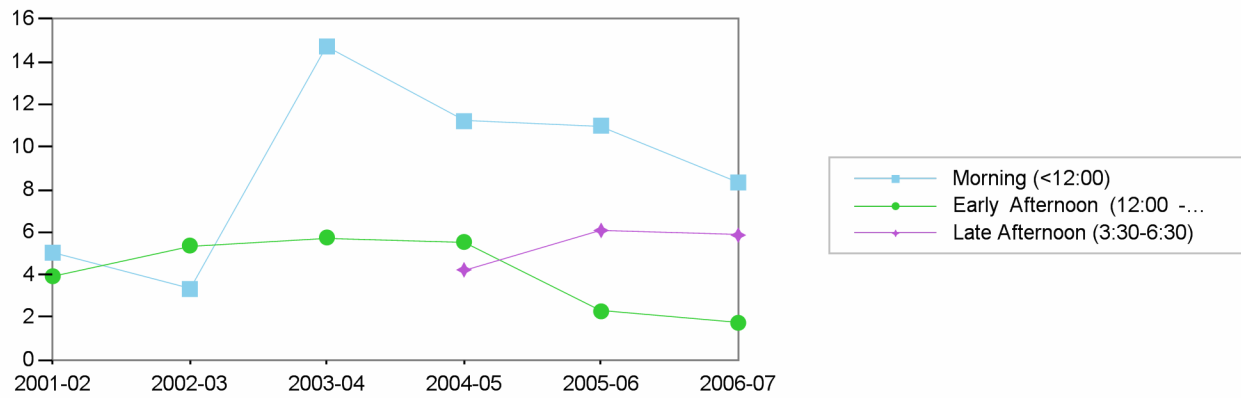
Summer    Winter    Winter    Summer    Summer    Winter

2001-02	24	5	4		18	
2002-03	25	3	5		16	
2003-04	24	15	6		5	
2004-05	26	11	6	3	4	4
2005-06	19	11	2	2	3	6
2006-07	10	8	2	8	6	6

Summer FTES by Time of Day



Winter FTES by Time of Day

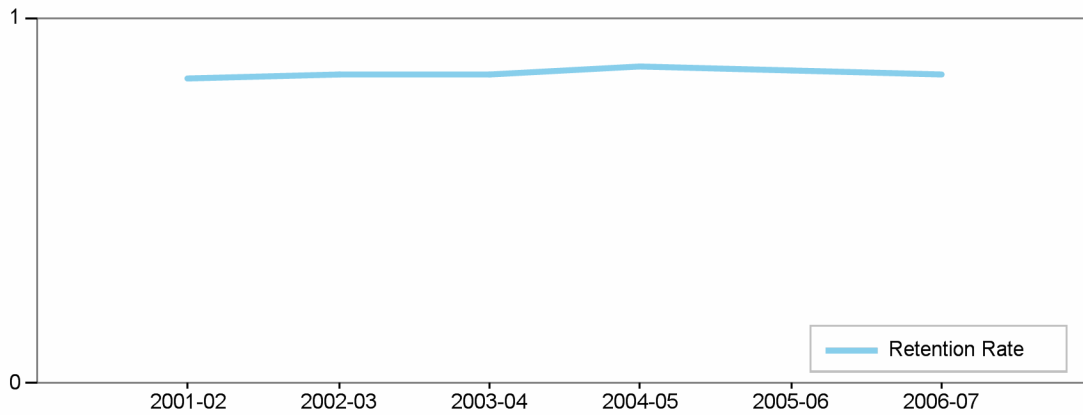


		2001-02	2002-03	2003-04	2004-05	2005-06	2006-07
Summer	Philosophy	41	42	29	34	24	23
Winter	Philosophy	9	9	20	21	19	16

**Los Angeles City College**  
**Comprehensive Program Review 2008**

**Philosophy Department**  
**Section IIc. Department Overview – Student Achievements**

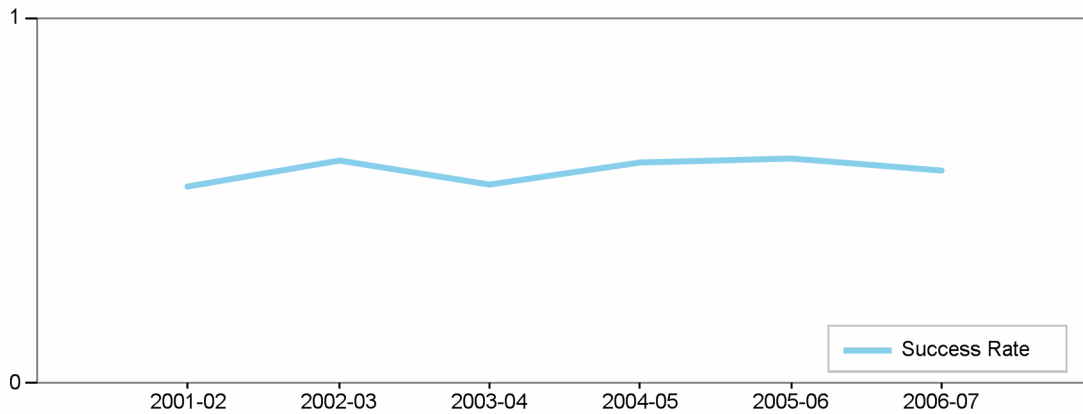
Department's Retention Rate



Retention Rate=  
 Numerator: Number of enrollments with A,B,C,D,F,CR,NC,I  
 Denominator: Number of enrollments with A,B,C,D,F,CR,NC,W,I

<b>Retention Rate</b>	2001-02	2002-03	2003-04	2004-05	2005-06	2006-07
Philosophy	83 %	84 %	84 %	87 %	86 %	84 %

Department's Success Rate

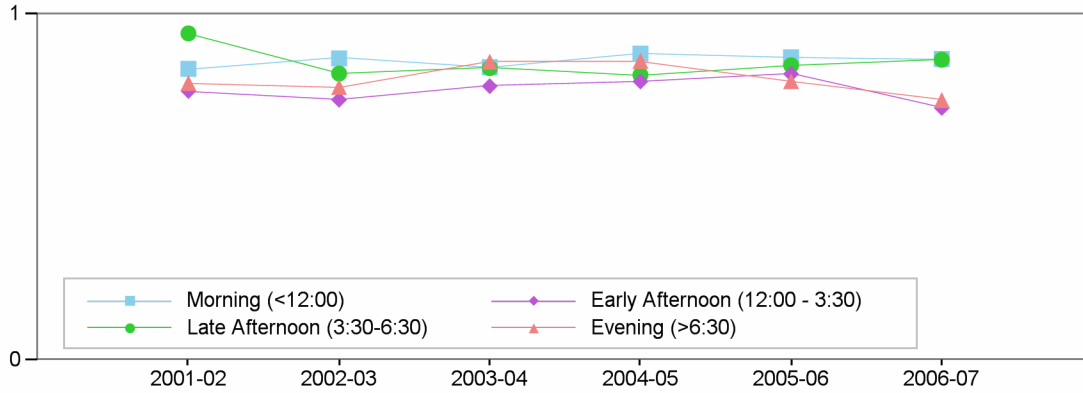


Success Rate =  
 Numerator: Number of enrollments with A,B,C,CR  
 Denominator: Number of enrollments with A,B,C,D,F,CR,NC,W,I

<b>Success Rate</b>	2001-02	2002-03	2003-04	2004-05	2005-06	2006-07
Philosophy	54 %	61 %	54 %	60 %	61 %	58 %

## Department Success and Retention Rates by Time of Day

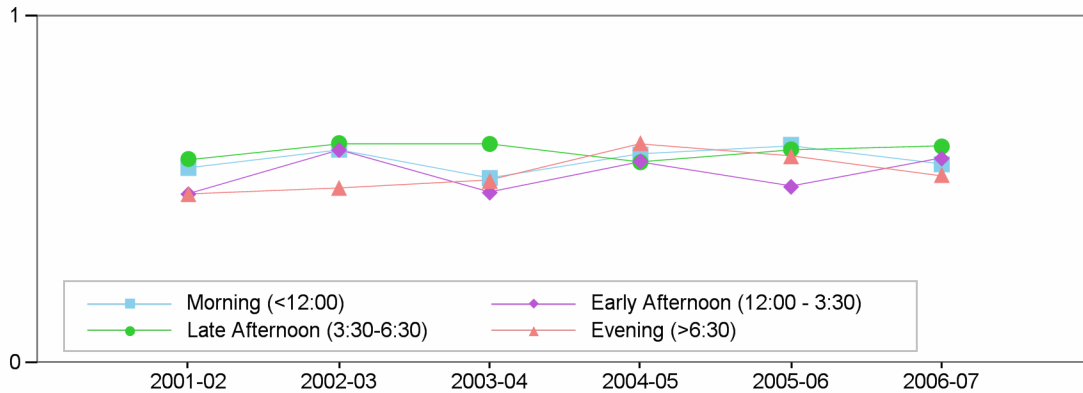
### Retention Rate by Time of Day



#### Retention Rate

	2001-02	2002-03	2003-04	2004-05	2005-06	2006-07
Morning (<12:00)	84 %	87 %	85 %	89 %	88 %	87 %
Late Afternoon (3:30-6:30)	94 %	83 %	84 %	82 %	85 %	87 %
Early Afternoon (12:00 - 3:30)	78 %	75 %	79 %	81 %	83 %	73 %
Evening (>6:30)	80 %	79 %	86 %	87 %	81 %	75 %

### Success Rate by Time of Day

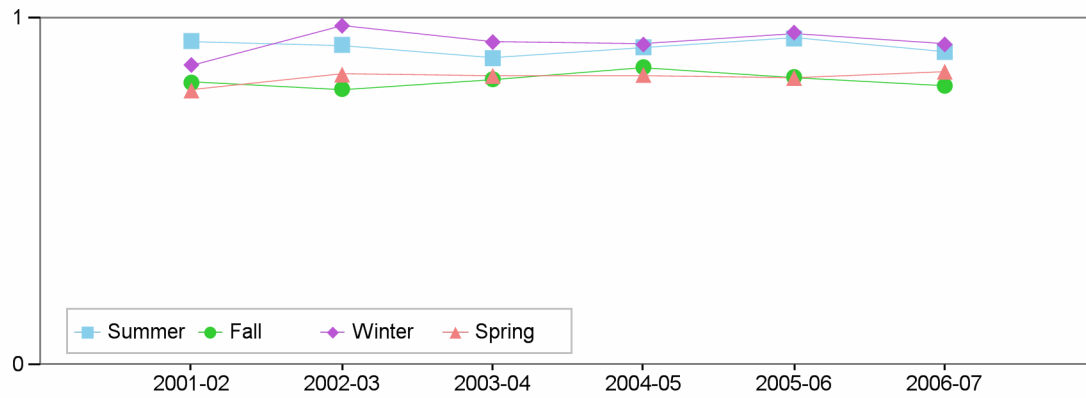


#### Success Rate

	2001-02	2002-03	2003-04	2004-05	2005-06	2006-07
Morning (<12:00)	56 %	62 %	53 %	60 %	63 %	57 %
Late Afternoon (3:30-6:30)	59 %	63 %	63 %	58 %	62 %	63 %
Early Afternoon (12:00 - 3:30)	49 %	61 %	49 %	58 %	51 %	59 %
Evening (>6:30)	49 %	51 %	53 %	63 %	60 %	54 %

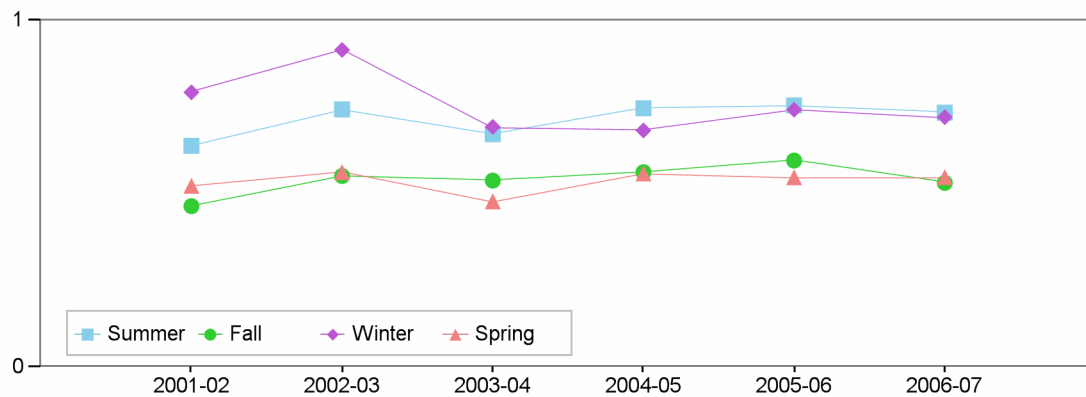
## Department Success and Retention Rates by Term

### Retention Rate by Term



Retention Rate	2001-02	2002-03	2003-04	2004-05	2005-06	2006-07
Summer	93 %	92 %	89 %	92 %	94 %	90 %
Fall	81 %	80 %	82 %	86 %	83 %	81 %
Winter	87 %	98 %	93 %	92 %	96 %	93 %
Spring	79 %	84 %	83 %	84 %	83 %	85 %

### Success Rate by Term



Success Rate	2001-02	2002-03	2003-04	2004-05	2005-06	2006-07
Summer	64 %	74 %	67 %	75 %	75 %	73 %
Fall	46 %	55 %	54 %	56 %	60 %	53 %
Winter	79 %	91 %	69 %	68 %	74 %	72 %
Spring	52 %	56 %	48 %	56 %	55 %	55 %

## Department Success and Retention Rates by Discipline

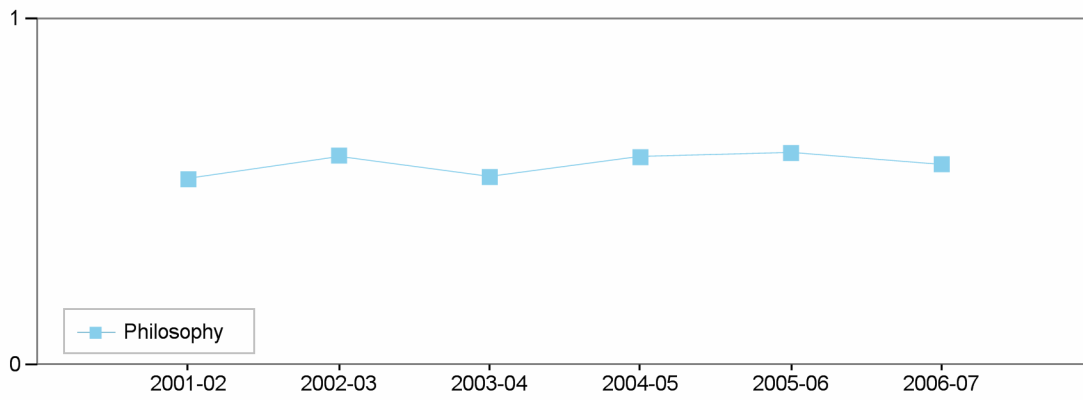
### Retention Rate by Discipline



#### Retention Rate

	2001-02	2002-03	2003-04	2004-05	2005-06	2006-07
Philosophy	83 %	84 %	84 %	87 %	86 %	84 %

### Success Rate by Discipline



#### Success Rate

	2001-02	2002-03	2003-04	2004-05	2005-06	2006-07
Philosophy	54 %	61 %	54 %	60 %	61 %	58 %

---

**Los Angeles City College  
Comprehensive Program Review 2008**

Department

**Section IIc. Department Overview – Student Achievements**

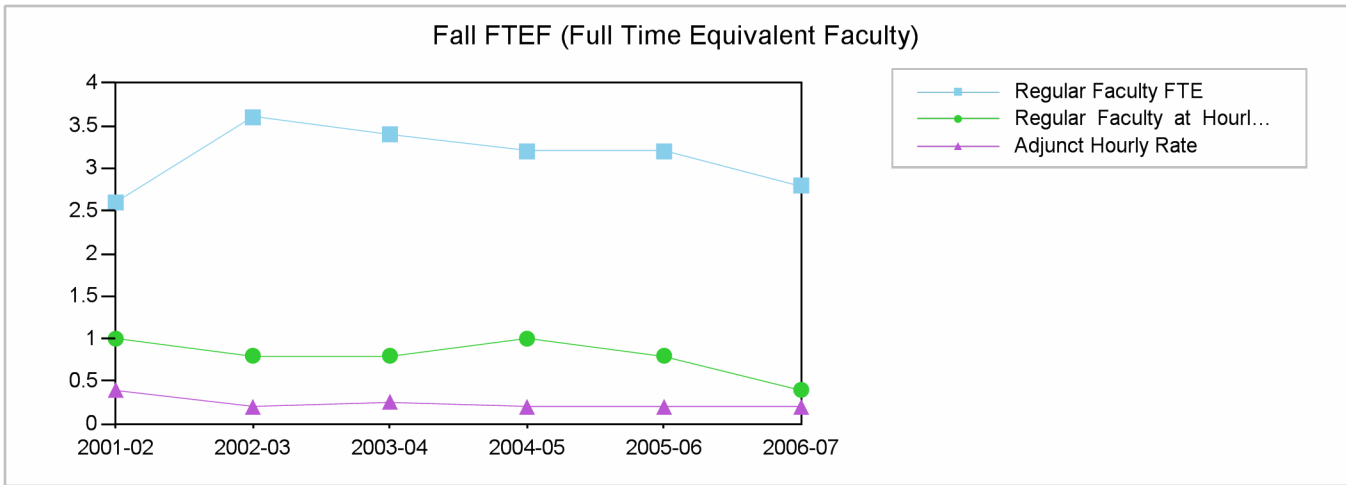
**Department's Awards by Program**



**Los Angeles City College  
Comprehensive Program Review 2008**

**Philosophy Department**

**Section IId. Department Overview – FTEF**



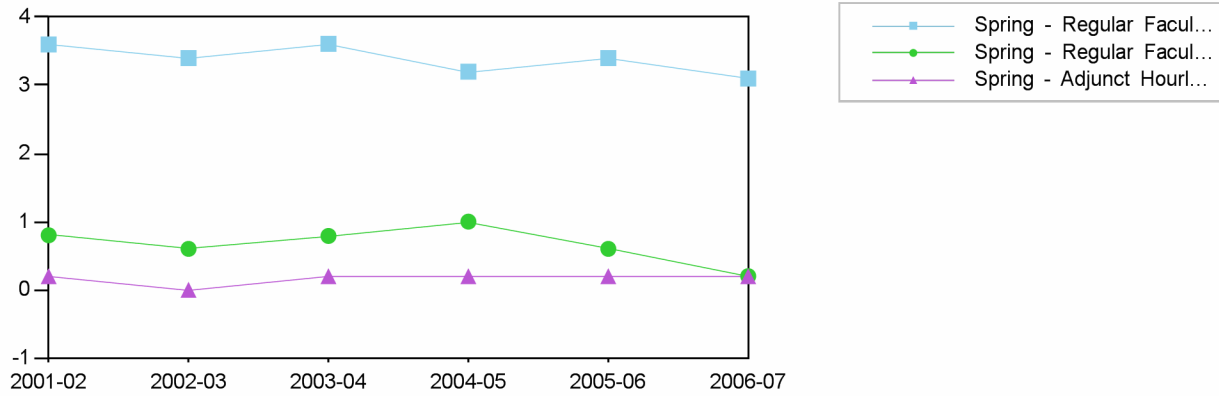
Fall	2001-02	2002-03	2003-04	2004-05	2005-06	2006-07
Regular Faculty FTE	2.6	3.6	3.4	3.2	3.2	2.8
Regular Faculty at Hourly Rate	1	0.8	0.8	1	0.8	0.4
Adjunct Hourly Rate	0.4	0.2	0.26	0.2	0.2	0.2
<b>Total</b>	<b>4</b>	<b>4.6</b>	<b>4.46</b>	<b>4.4</b>	<b>4.2</b>	<b>3.4</b>

Fall FTES / FTEF Ratio



Fall	2001-02	2002-03	2003-04	2004-05	2005-06	2006-07
Total FTEF	4	4.6	4.46	4.4	4.2	3.4
Total FTES	81.23	104.75	115.91	100.23	73.53	61.46
<b>FTES / FTEF</b>	<b>20.3</b>	<b>22.8</b>	<b>26.0</b>	<b>22.8</b>	<b>17.5</b>	<b>18.1</b>

Spring FTEF (Full Time Equivalent Faculty)



Spring

**2001-02 2002-03 2003-04 2004-05 2005-06 2006-07**

**Spring Spring Spring Spring Spring Spring**

Regular Faculty FTE

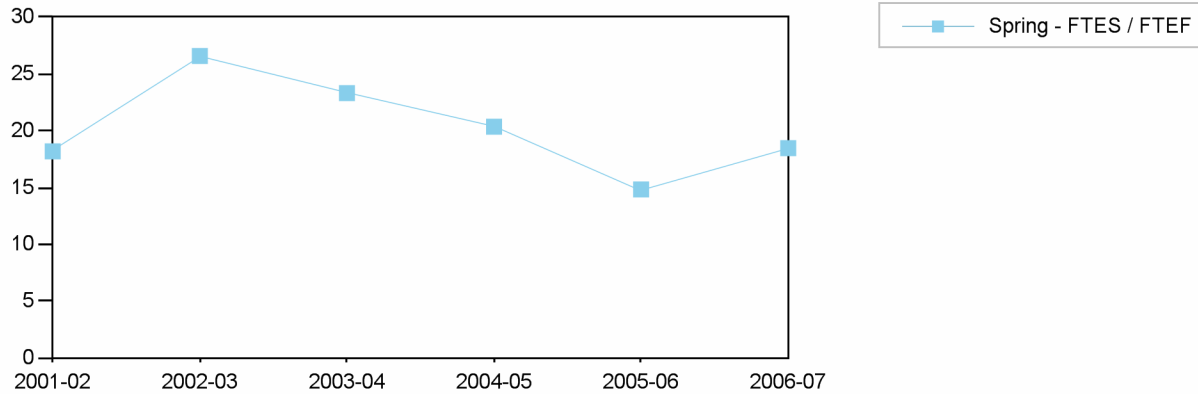
Regular Faculty FTE	3.6	3.4	3.61	3.2	3.4	3.1
Regular Faculty at Hourly Rate	0.8	0.6	0.79	1	0.6	0.2
Adjunct Hourly Rate	0.2	0	0.2	0.2	0.2	0.2
Total	4.6	4	4.6	4.4	4.2	3.5

Regular Faculty at Hourly Rate

Adjunct Hourly Rate

Total

Spring FTES / FTEF Ratio



Spring

**2001-02 2002-03 2003-04 2004-05 2005-06 2006-07**

**Spring Spring Spring Spring Spring Spring**

Total FTEF

Total FTES

FTES / FTEF

Total FTEF	4.6	4	4.6	4.4	4.2	3.5
Total FTES	83.66	106.34	107.29	89.55	62.32	64.64
FTES / FTEF	18.2	26.6	23.3	20.4	14.8	18.5

Fall FTES / FTEF Ratio by Discipline



**Philosophy**

	2001-02	2002-03	2003-04	2004-05	2005-06	2006-07
Total FTEF	4	4.6	4.46	4.4	4.2	3.4
Total FTES	81.23	104.75	115.91	100.23	73.53	61.46
FTES / FTEF	20.3	22.8	26.0	22.8	17.5	18.1