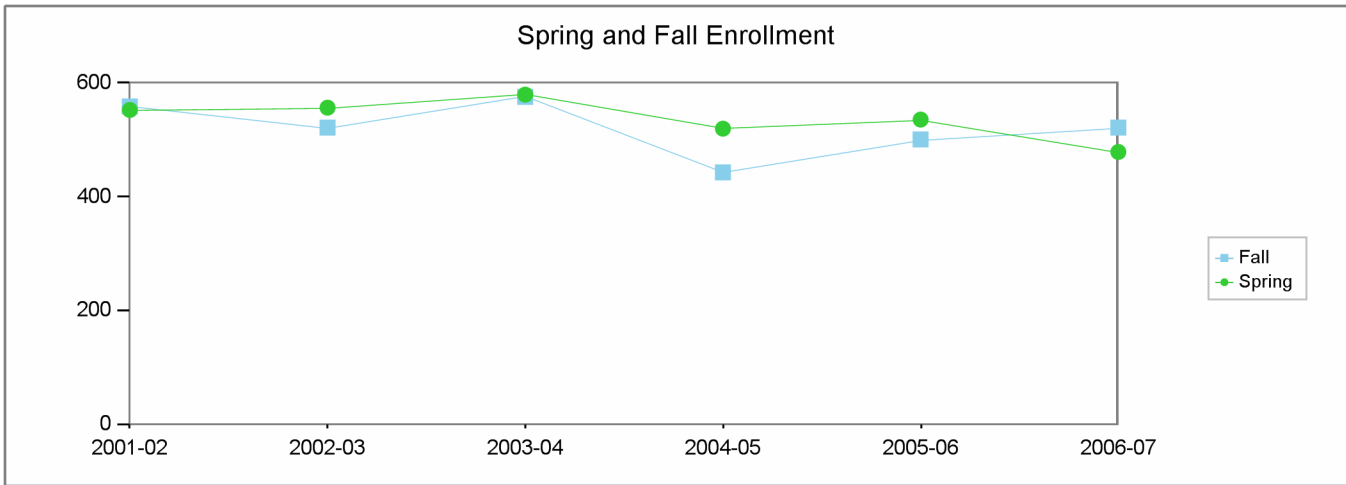


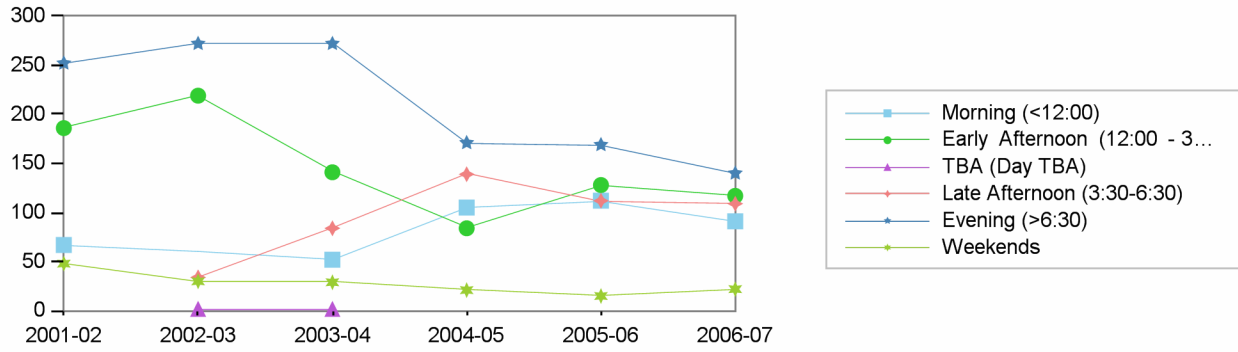
Los Angeles City College
Comprehensive Program Review 2008

Physics/Engineering Department
Section IIa. Department Overview – Response to Demand: Enrollment

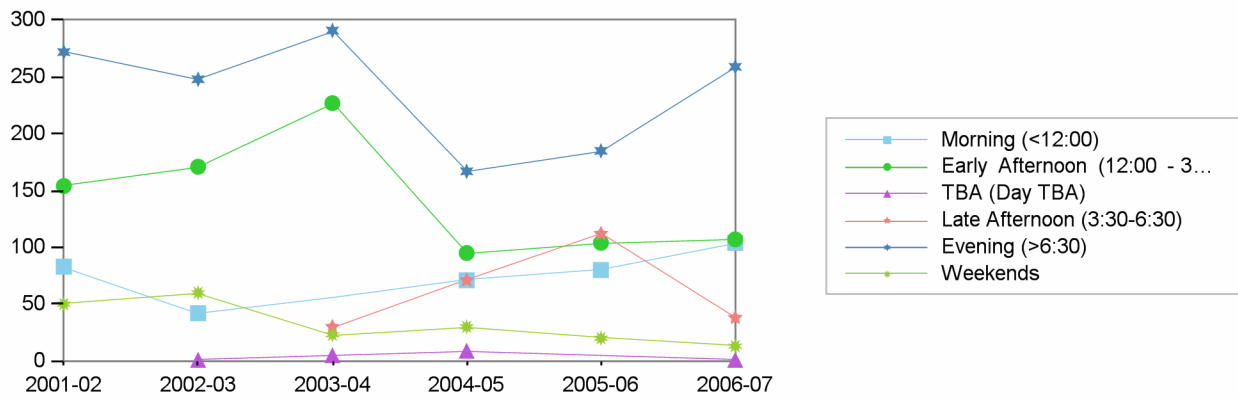


	2001-02	2002-03	2003-04	2004-05	2005-06	2006-07
Fall	559	522	576	443	501	522
Spring	553	557	580	520	536	479

Spring Enrollment by Time of Day



Fall Enrollment by Time of Day

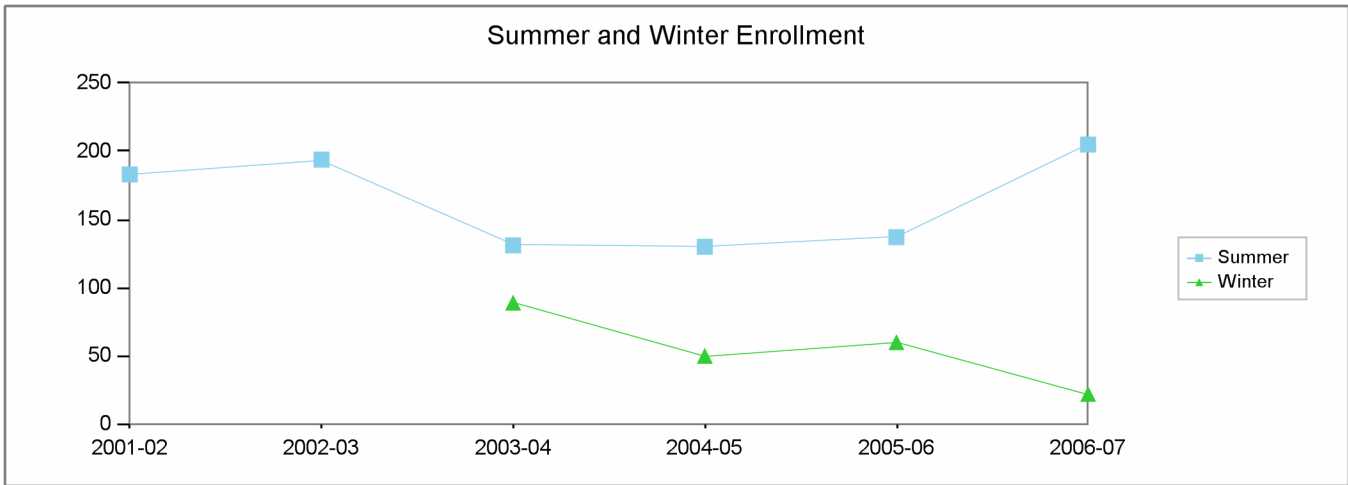


Morning (<12:00) Early Afternoon (12:00 - 3:30) TBA (Day TBA) Late Afternoon (3:30-6:30) Evening (>6:30) Weekends

	Fall	Spring	Fall	Spring	Fall	Spring	Spring	Fall	Fall	Spring	Fall	Spring
2001-02	83	67	154	186					272	252	50	48
2002-03	42		171	219	1	2	34		248	272	60	30
2003-04		52	227	141	5	2	84	30	291	272	23	29
2004-05	71	105	95	84	9		139	71	167	171	30	21
2005-06	80	112	104	128			112	112	185	169	20	15
2006-07	104	91	107	117	1		109	38	259	140	13	22

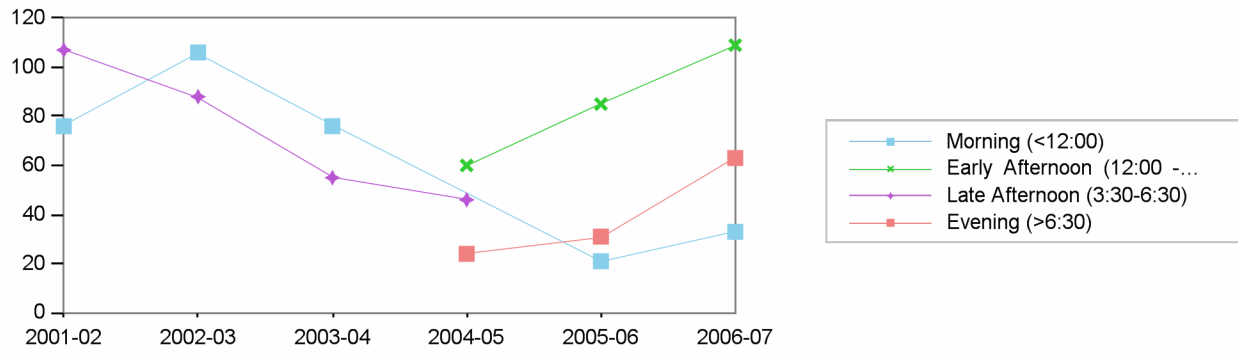
**Los Angeles City College
Comprehensive Program Review 2008**

**Physics/Engineering Department
Section IIa. Department Overview – Response to Demand: Enrollment**

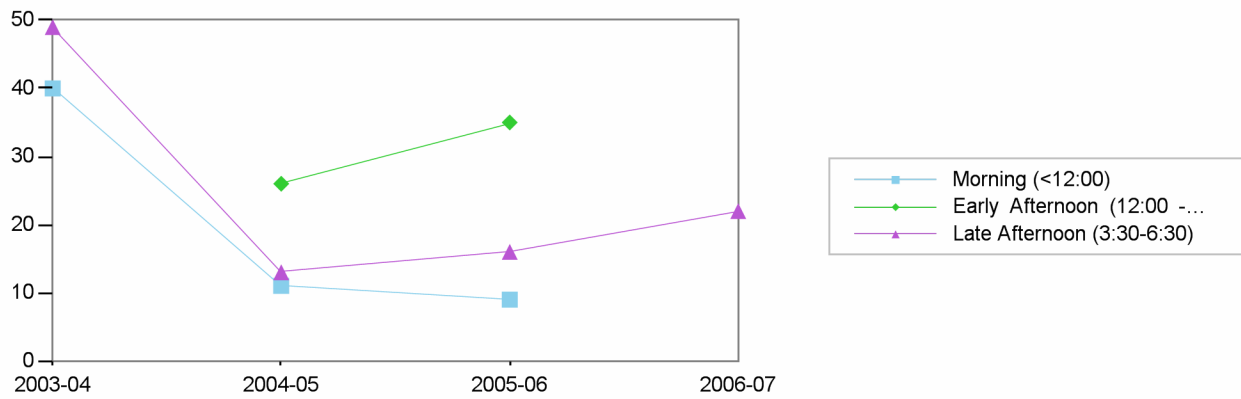


	2001-02	2002-03	2003-04	2004-05	2005-06	2006-07
Summer	183	194	131	130	137	205
Winter			89	50	60	22

Summer Enrollment by Time of Day



Winter Enrollment by Time of Day



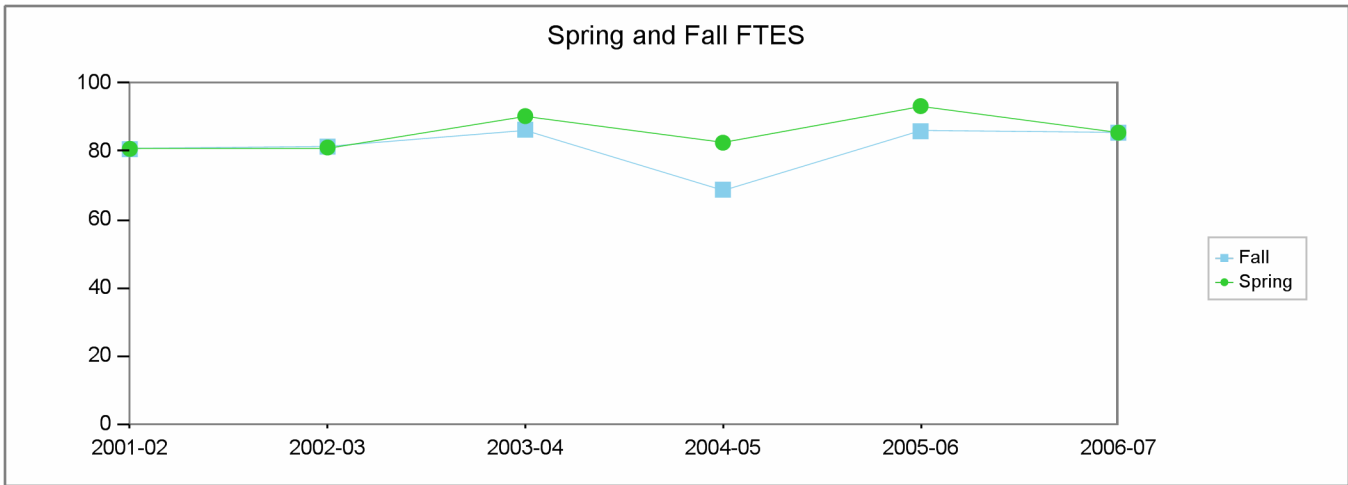
Morning (<12:00) Early Afternoon (12:00 - 3:30) Late Afternoon (3:30-6:30) Evening (>6:30)

Summer Winter Summer Winter Summer Winter Summer

2001-02	76				107		
2002-03	106				88		
2003-04	76	40			55	49	
2004-05		11	60	26	46	13	24
2005-06	21	9	85	35		16	31
2006-07	33		109			22	63

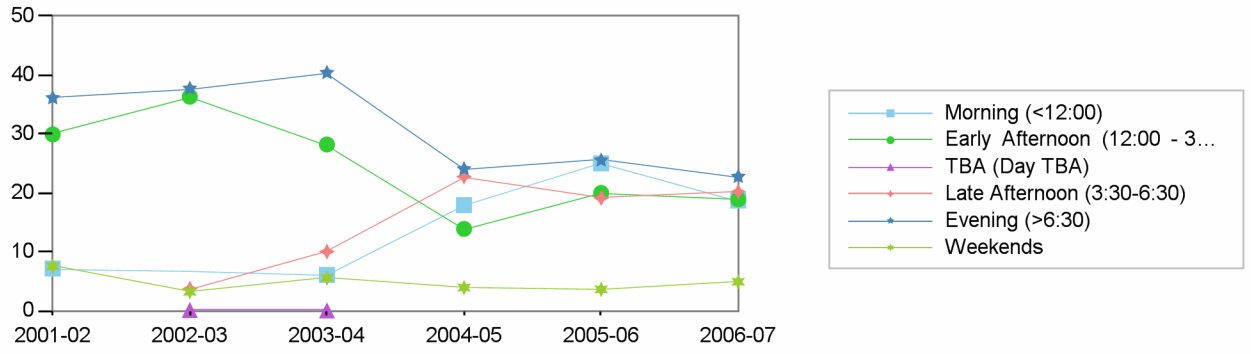
Los Angeles City College
Comprehensive Program Review 2008

Physics/Engineering Department
Section IIa. Department Overview – Response to Demand: FTES

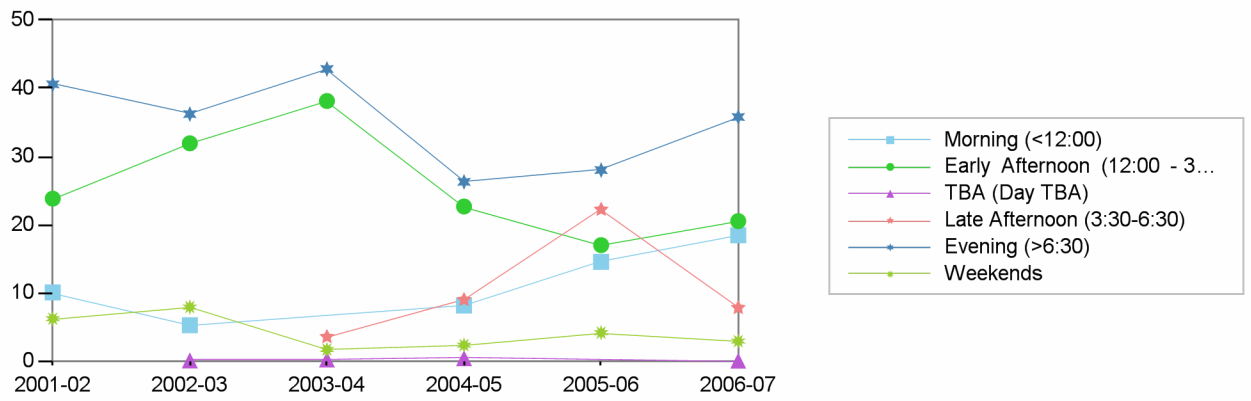


	2001-02	2002-03	2003-04	2004-05	2005-06	2006-07
Fall	81	81	86	69	86	85
Spring	81	81	90	83	93	86

Spring FTES by Time of Day



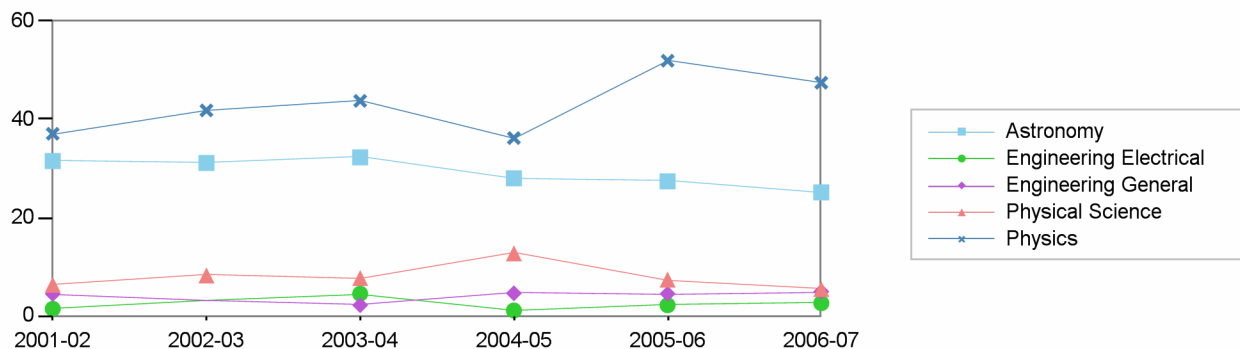
Fall FTES by Time of Day



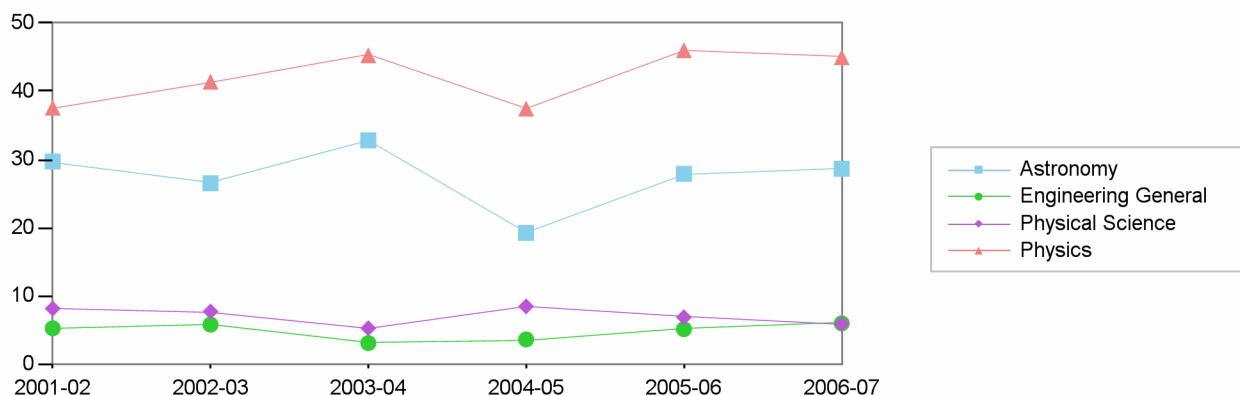
Morning (<12:00) Early Afternoon (12:00 - 3:30) TBA (Day TBA) Late Afternoon (3:30-6:30) Evening (>6:30) Weekends

	Fall	Spring	Fall	Spring	Fall	Spring	Spring	Fall	Fall	Spring	Fall	Spring
2001-02	10	7	24	30					41	36	6	8
2002-03	5		32	36	0	0	4		36	38	8	3
2003-04		6	38	28	0	0	10	4	43	40	2	6
2004-05	8	18	23	14	0		23	9	26	24	2	4
2005-06	15	25	17	20			19	22	28	26	4	4
2006-07	18	19	21	19	0		20	8	36	23	3	5

Spring FTES by Discipline



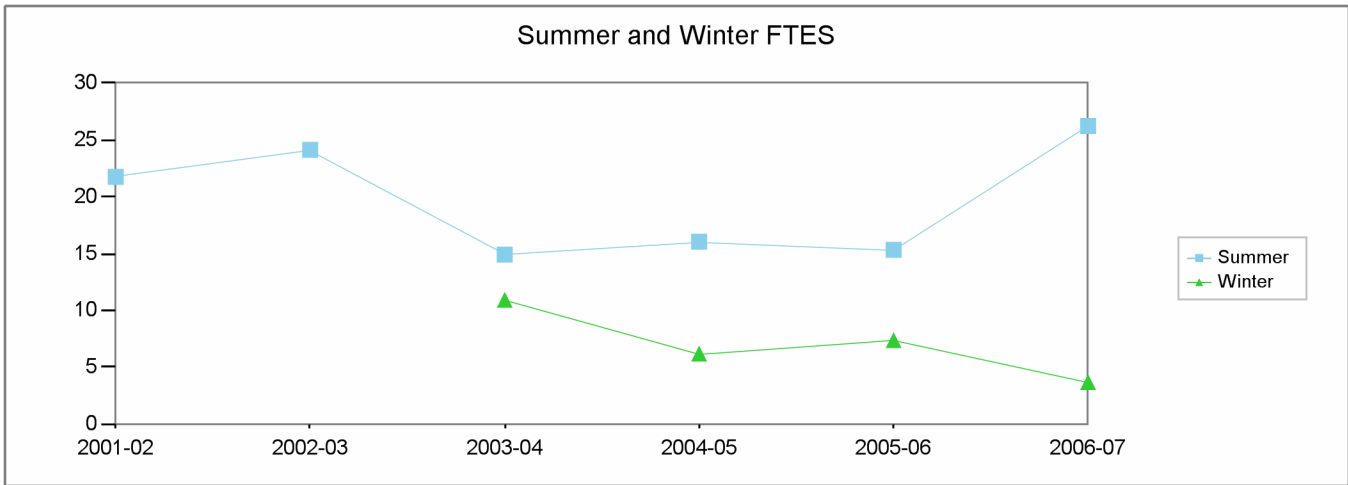
Fall FTES by Discipline



		2001-02	2002-03	2003-04	2004-05	2005-06	2006-07
Fall	Astronomy	30	27	33	19	28	29
	Physical Science	8	8	5	8	7	6
	Physics	38	41	45	37	46	45
	Engineering General	5	6	3	4	5	6
Spring	Astronomy	32	31	32	28	27	25
	Physical Science	6	8	8	13	7	5
	Physics	37	42	44	36	52	47
	Engineering Electrical	1		4	1	2	3
	Engineering General	4		2	5	4	5

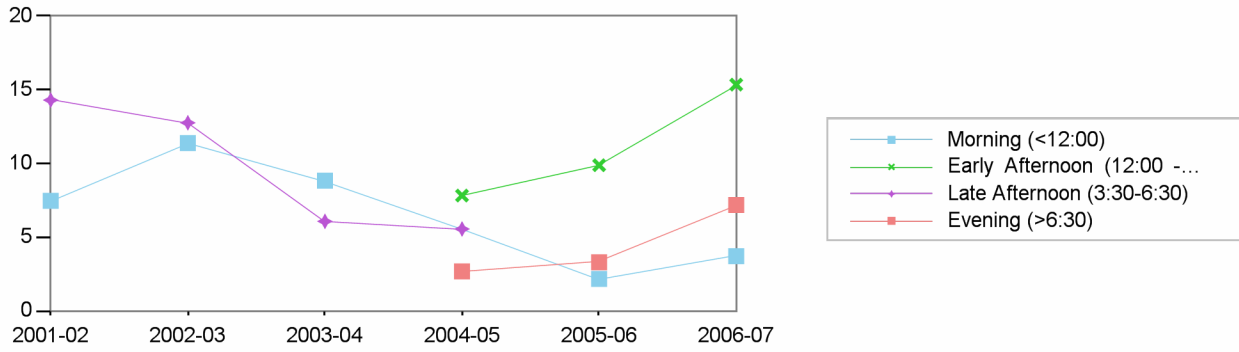
**Los Angeles City College
Comprehensive Program Review 2008**

**Physics/Engineering Department
Section IIa. Department Overview – Response to Demand: FTES**

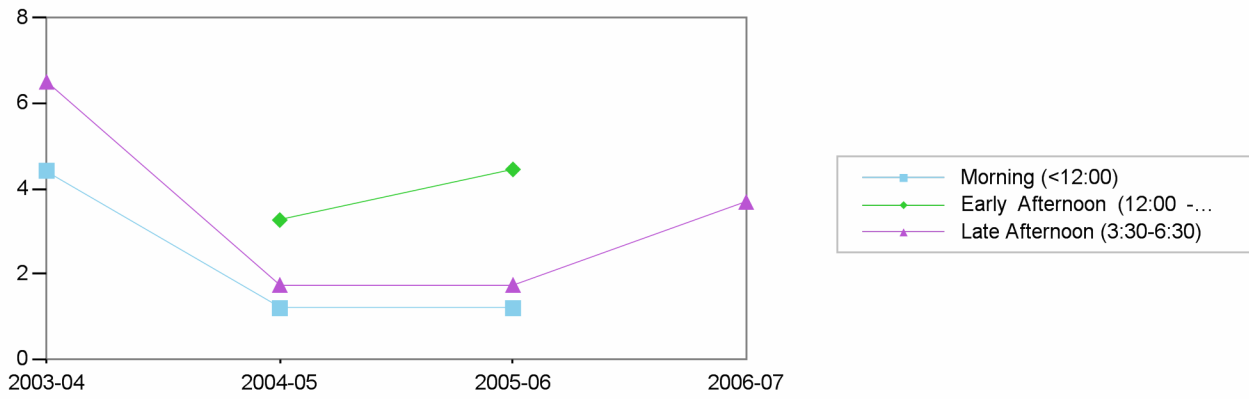


	2001-02	2002-03	2003-04	2004-05	2005-06	2006-07
Summer	22	24	15	16	15	26
Winter			11	6	7	4

Summer FTES by Time of Day



Winter FTES by Time of Day

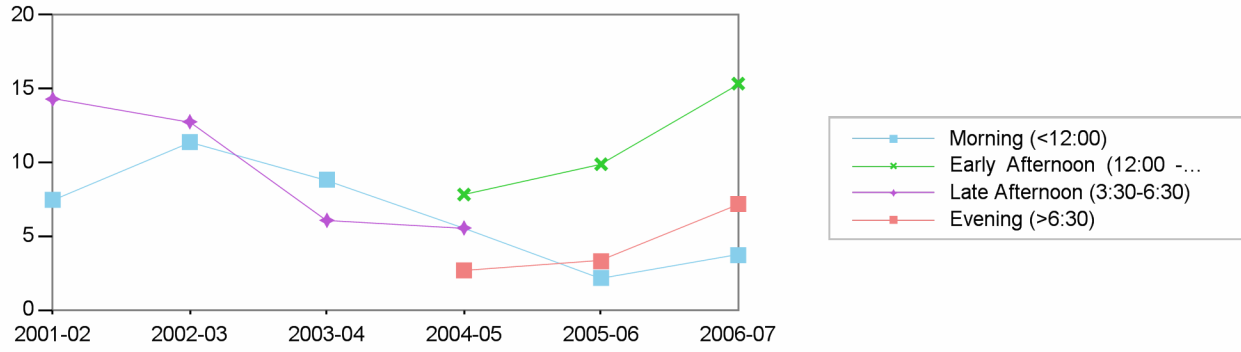


Morning (<12:00) Early Afternoon (12:00 - 3:30) Late Afternoon (3:30-6:30) Evening (>6:30)

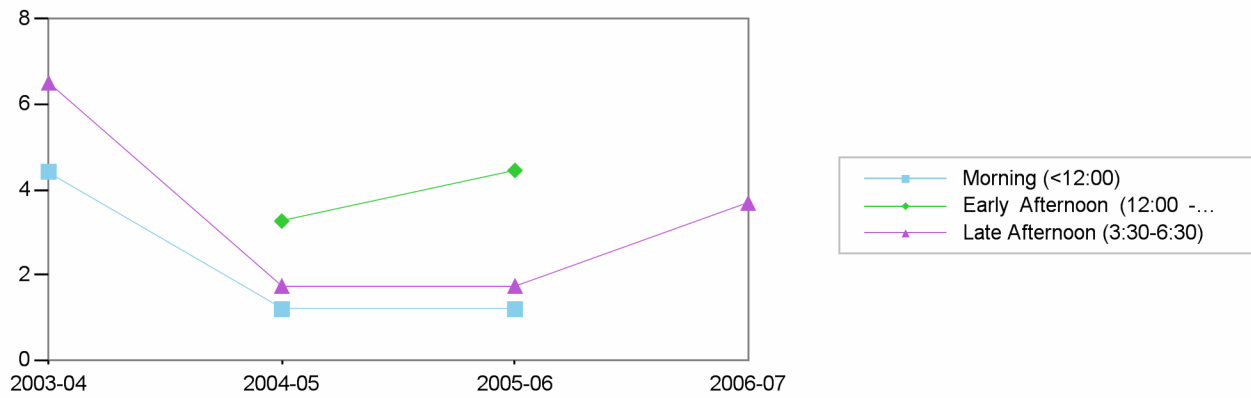
Summer Winter Summer Winter Summer Winter Summer

2001-02	7				14		
2002-03	11				13		
2003-04	9	4			6	7	
2004-05		1	8	3	6	2	3
2005-06	2	1	10	4		2	3
2006-07	4		15			4	7

Summer FTES by Time of Day



Winter FTES by Time of Day

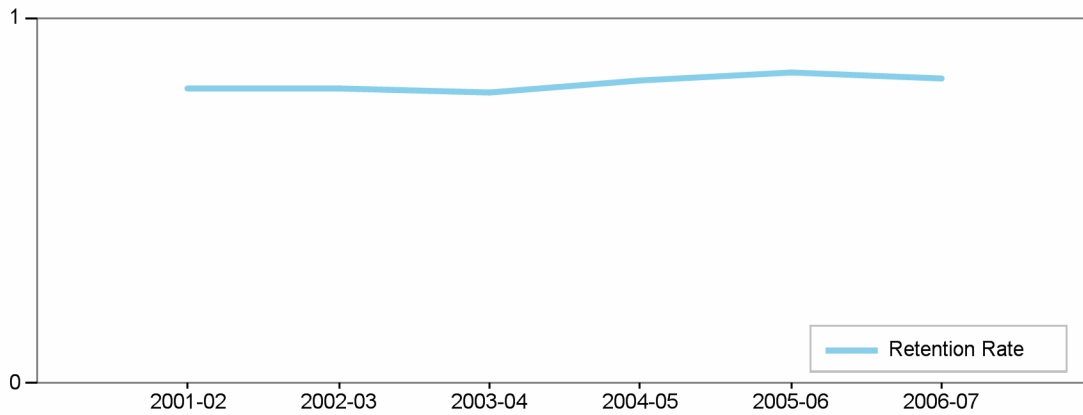


		2001-02	2002-03	2003-04	2004-05	2005-06	2006-07
Summer	Astronomy	10	13	15	13	12	10
	Physical Science	3	4			4	6
	Physics	7	6		3		11
	Engineering General	2	1				
Winter	Astronomy			11	5	5	4
	Physical Science				1	2	

**Los Angeles City College
Comprehensive Program Review 2008**

**Physics/Engineering Department
Section IIc. Department Overview – Student Achievements**

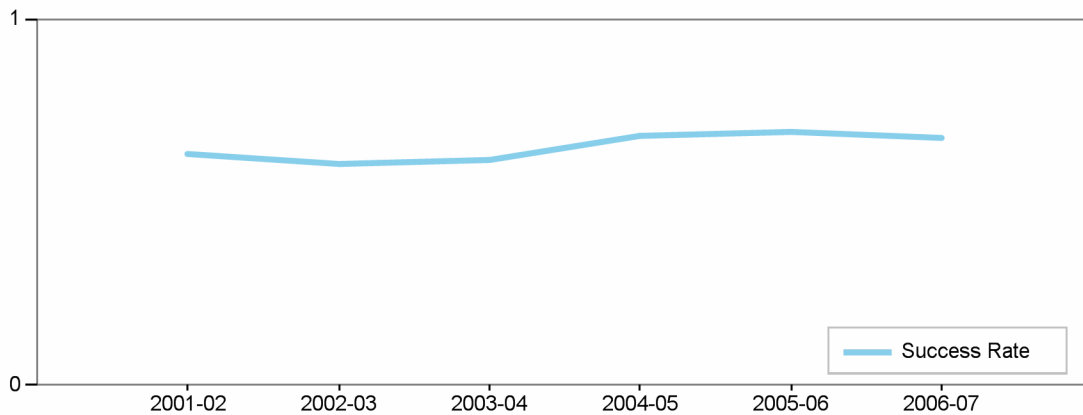
Department's Retention Rate



Retention Rate=
 Numerator: Number of enrollments with A,B,C,D,F,CR,NC,I
 Denominator: Number of enrollments with A,B,C,D,F,CR,NC,W,I

Retention Rate	2001-02	2002-03	2003-04	2004-05	2005-06	2006-07
Physics/Engineering	81 %	80 %	79 %	83 %	85 %	83 %

Department's Success Rate

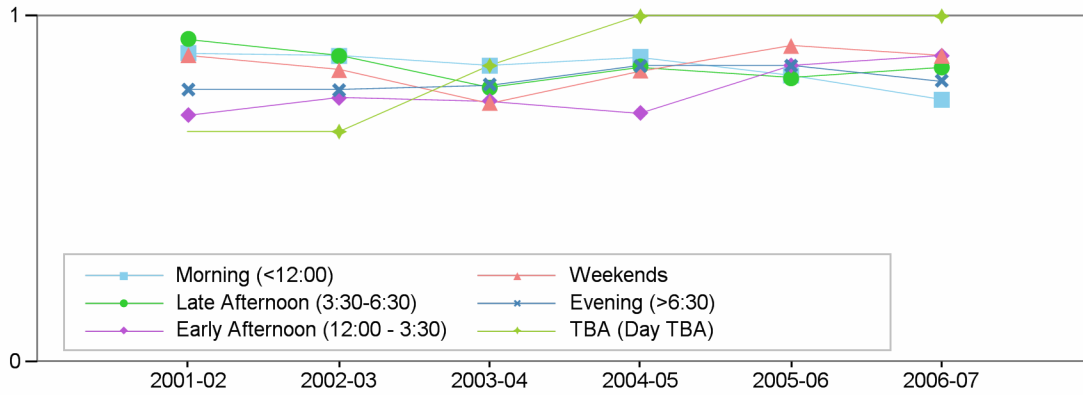


Success Rate =
 Numerator: Number of enrollments with A,B,C,CR
 Denominator: Number of enrollments with A,B,C,D,F,CR,NC,W,I

Success Rate	2001-02	2002-03	2003-04	2004-05	2005-06	2006-07
Physics/Engineering	63 %	60 %	61 %	68 %	69 %	68 %

Department Success and Retention Rates by Time of Day

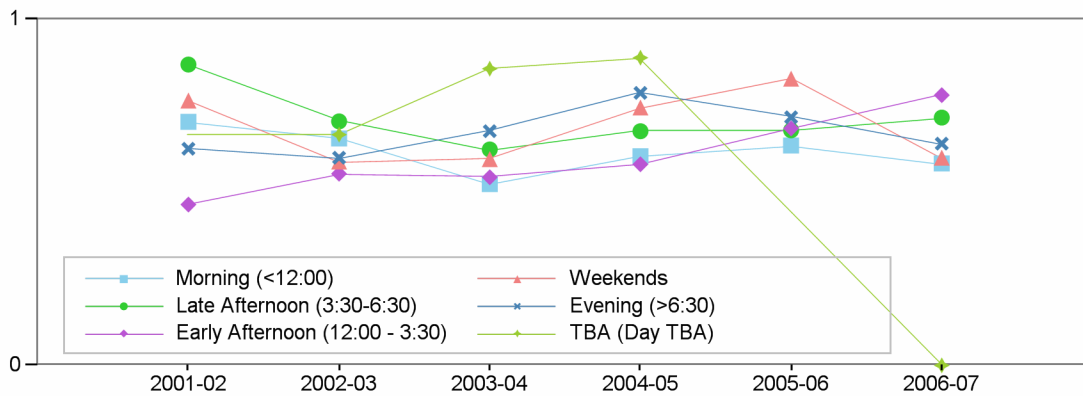
Retention Rate by Time of Day



Retention Rate

	2001-02	2002-03	2003-04	2004-05	2005-06	2006-07
Morning (<12:00)	89 %	89 %	86 %	88 %	83 %	76 %
Late Afternoon (3:30-6:30)	93 %	89 %	79 %	86 %	82 %	85 %
Early Afternoon (12:00 - 3:30)	71 %	76 %	76 %	72 %	86 %	89 %
Weekends	89 %	84 %	75 %	84 %	91 %	89 %
Evening (>6:30)	79 %	79 %	80 %	86 %	86 %	81 %
TBA (Day TBA)	NaN	67 %	86 %	100 %	NaN	100 %

Success Rate by Time of Day

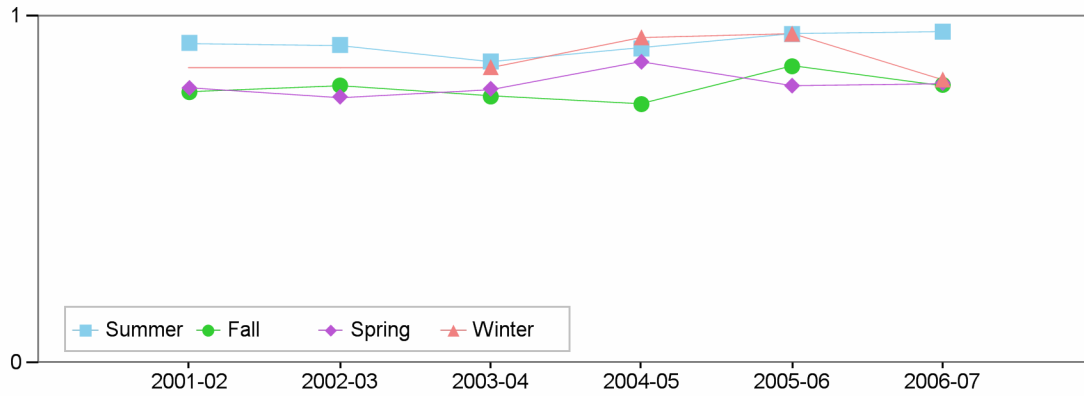


Success Rate

	2001-02	2002-03	2003-04	2004-05	2005-06	2006-07
Morning (<12:00)	70 %	66 %	52 %	60 %	64 %	58 %
Late Afternoon (3:30-6:30)	87 %	70 %	62 %	68 %	68 %	72 %
Early Afternoon (12:00 - 3:30)	46 %	55 %	54 %	58 %	68 %	78 %
Weekends	77 %	59 %	60 %	75 %	83 %	60 %
Evening (>6:30)	63 %	60 %	68 %	79 %	72 %	64 %
TBA (Day TBA)	NaN	67 %	86 %	89 %	NaN	0 %

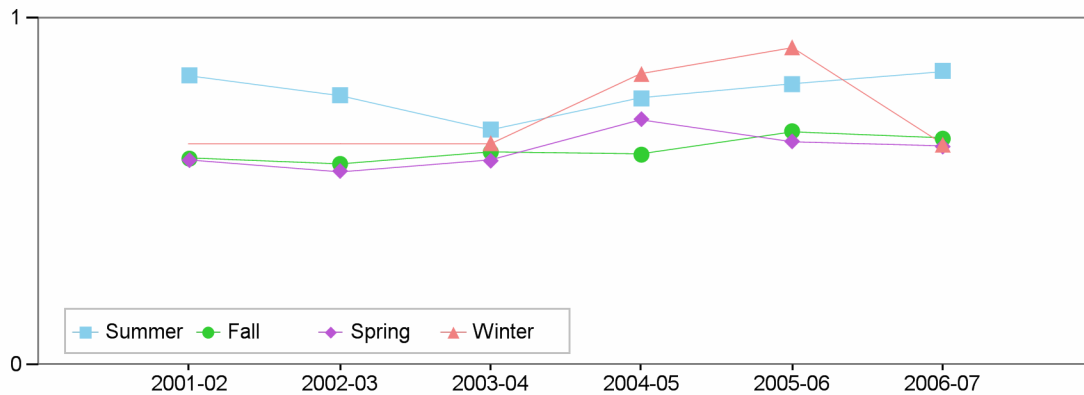
Department Success and Retention Rates by Term

Retention Rate by Term



Retention Rate	2001-02	2002-03	2003-04	2004-05	2005-06	2006-07
Summer	92 %	92 %	87 %	91 %	95 %	96 %
Fall	78 %	80 %	77 %	75 %	86 %	80 %
Spring	79 %	77 %	79 %	87 %	80 %	81 %
Winter	NaN	NaN	85 %	94 %	95 %	82 %

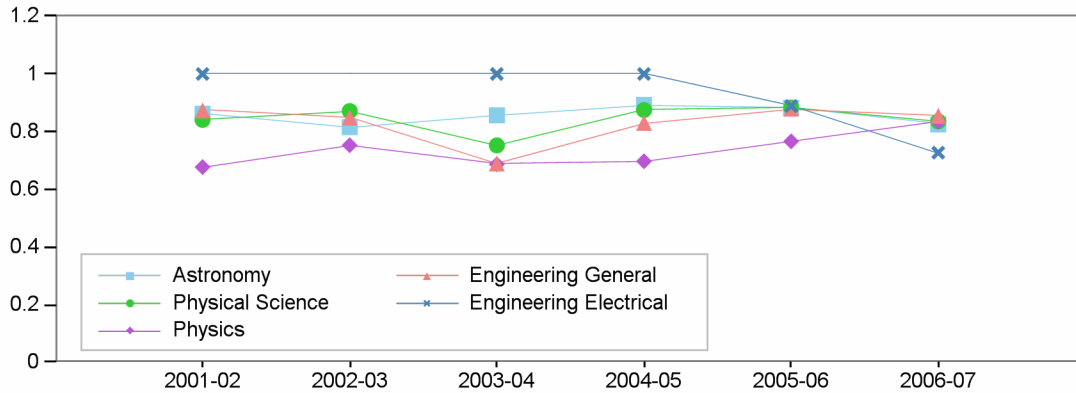
Success Rate by Term



Success Rate	2001-02	2002-03	2003-04	2004-05	2005-06	2006-07
Summer	84 %	78 %	68 %	77 %	81 %	85 %
Fall	60 %	58 %	61 %	61 %	67 %	65 %
Spring	59 %	56 %	59 %	71 %	65 %	63 %
Winter	NaN	NaN	64 %	84 %	92 %	64 %

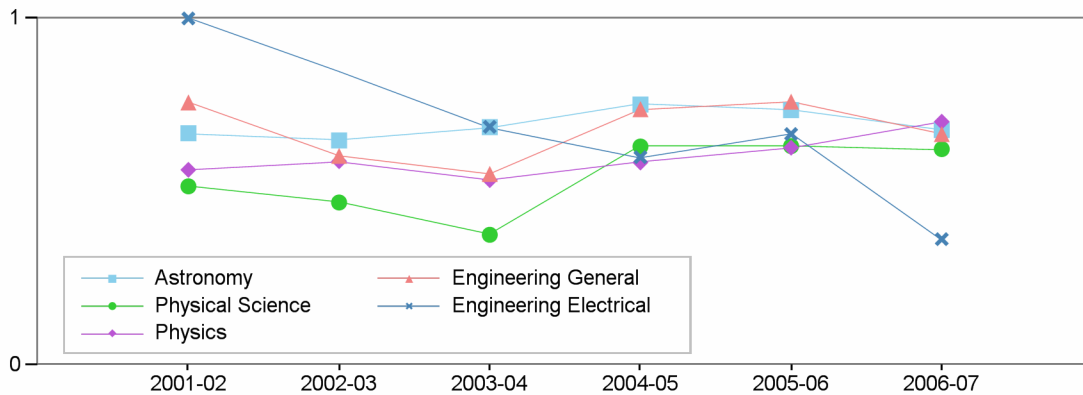
Department Success and Retention Rates by Discipline

Retention Rate by Discipline



Retention Rate	2001-02	2002-03	2003-04	2004-05	2005-06	2006-07
Astronomy	86 %	82 %	86 %	89 %	88 %	83 %
Physical Science	84 %	87 %	75 %	88 %	88 %	84 %
Physics	68 %	75 %	69 %	70 %	77 %	83 %
Engineering General	87 %	85 %	69 %	83 %	88 %	86 %
Engineering Electrical	100 %	NaN	100 %	100 %	89 %	73 %

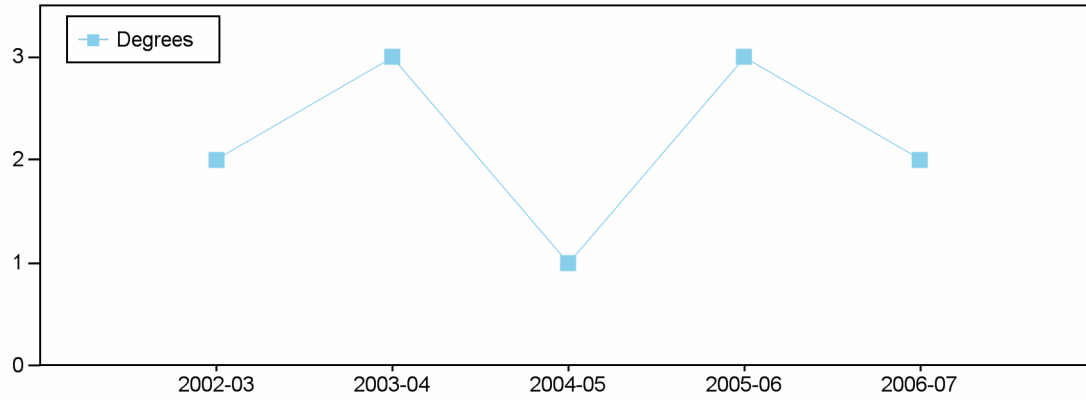
Success Rate by Discipline



Success Rate	2001-02	2002-03	2003-04	2004-05	2005-06	2006-07
Astronomy	67 %	65 %	69 %	75 %	74 %	68 %
Physical Science	52 %	47 %	38 %	63 %	63 %	62 %
Physics	56 %	59 %	53 %	58 %	63 %	70 %
Engineering General	76 %	60 %	55 %	74 %	76 %	67 %
Engineering Electrical	100 %	NaN	69 %	60 %	67 %	36 %

Los Angeles City College
Comprehensive Program Review 2008
 Physics/Engineering Department
Section IIc. Department Overview – Student Achievements

Department's Degrees and Certificates



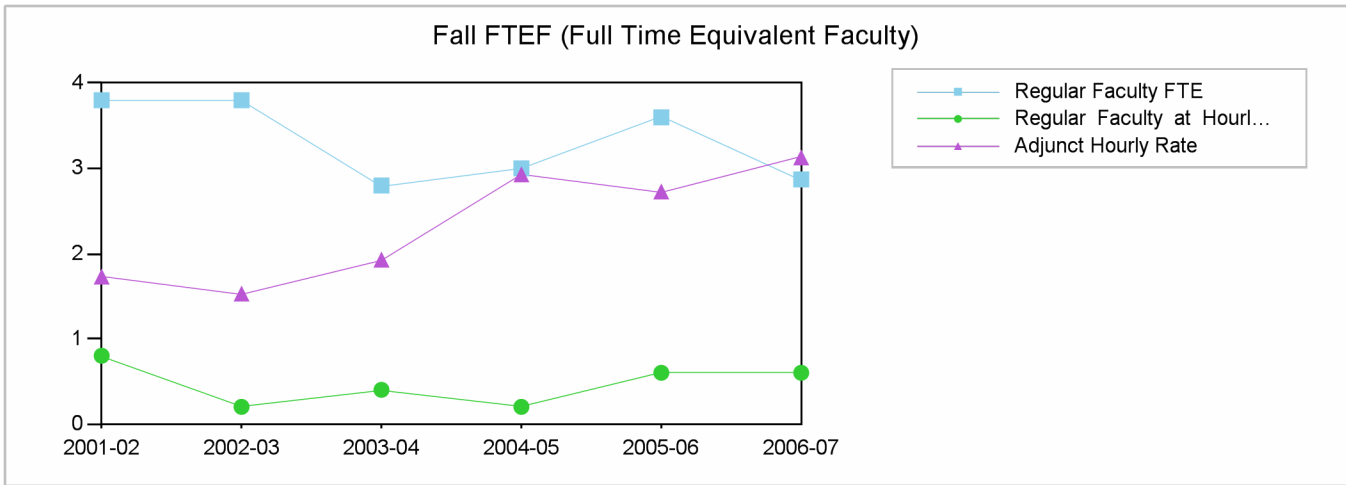
	2002-03	2003-04	2004-05	2005-06	2006-07
Degrees	2	3	1	3	2
Total	2	3	1	3	2

Department's Awards by Program

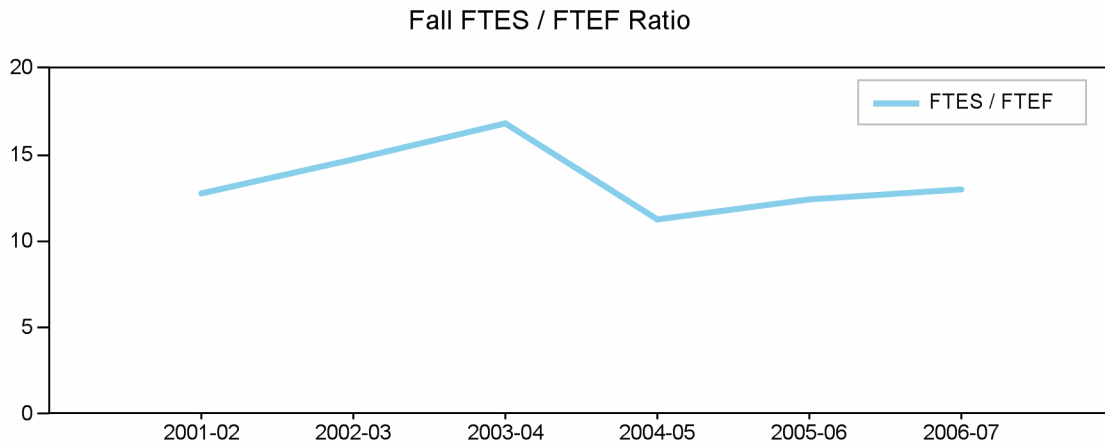
	2002-03	2003-04	2004-05	2005-06	2006-07
Degrees					
Engineering- General	2	2		2	1
Physics- General		1	1	1	1
Total	2	3	1	3	2

Los Angeles City College
Comprehensive Program Review 2008

Physics/Engineering Department
Section IId. Department Overview – FTEF

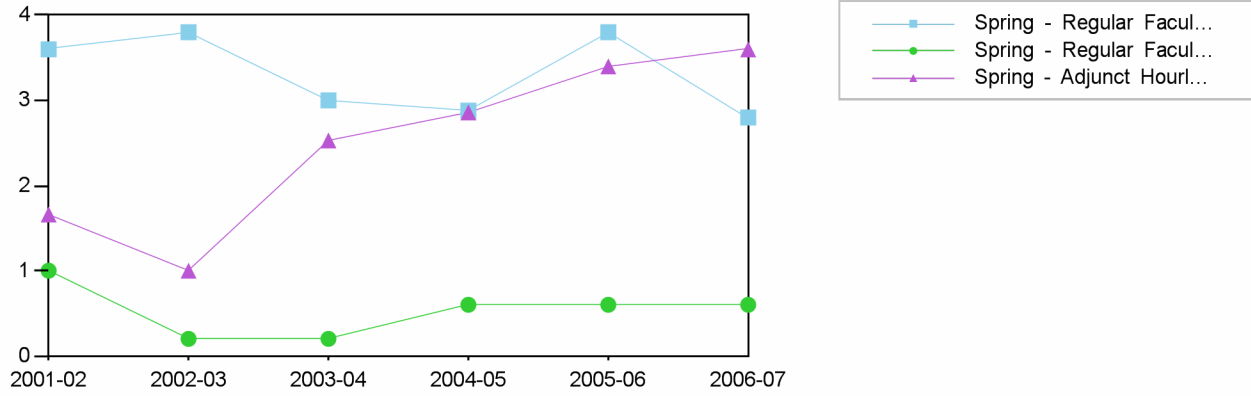


Fall	2001-02	2002-03	2003-04	2004-05	2005-06	2006-07
Regular Faculty FTE	3.8	3.8	2.8	3	3.6	2.87
Regular Faculty at Hourly Rate	0.8	0.2	0.4	0.2	0.6	0.6
Adjunct Hourly Rate	1.73	1.53	1.93	2.93	2.73	3.13
Total	6.33	5.53	5.13	6.13	6.93	6.6



Fall	2001-02	2002-03	2003-04	2004-05	2005-06	2006-07
Total FTEF	6.33	5.53	5.13	6.13	6.93	6.6
Total FTES	80.66	81.38	86.39	68.75	85.88	85.49
FTES / FTEF	12.7	14.7	16.8	11.2	12.4	13.0

Spring FTEF (Full Time Equivalent Faculty)



Spring

2001-02 2002-03 2003-04 2004-05 2005-06 2006-07

Spring Spring Spring Spring Spring Spring

Regular Faculty FTE

Regular Faculty FTE	3.6	3.8	3	2.88	3.8	2.8
Regular Faculty at Hourly Rate	1	0.2	0.2	0.6	0.6	0.6
Adjunct Hourly Rate	1.66	1	2.53	2.86	3.4	3.6
Total	6.26	5	5.73	6.34	7.8	7

Regular Faculty at Hourly Rate

Adjunct Hourly Rate

Total

Spring FTES / FTEF Ratio



Spring

2001-02 2002-03 2003-04 2004-05 2005-06 2006-07

Spring Spring Spring Spring Spring Spring

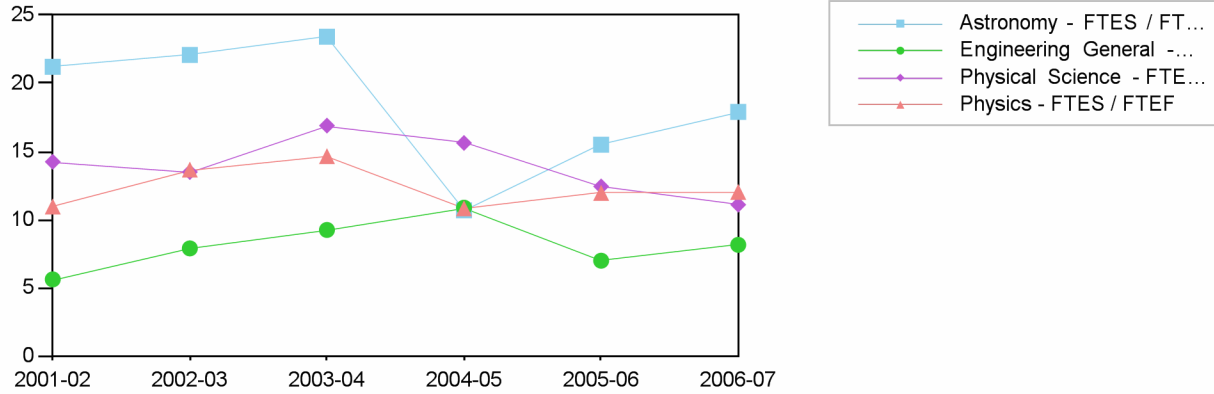
Total FTEF

Total FTES

FTES / FTEF

Total FTEF	6.26	5	5.73	6.34	7.8	7
Total FTES	80.74	81.14	90.36	82.55	93.29	85.5
FTES / FTEF	12.9	16.2	15.8	13.0	12.0	12.2

Fall FTES / FTEF Ratio by Discipline



2001-02 2002-03 2003-04 2004-05 2005-06 2006-07

		2001-02	2002-03	2003-04	2004-05	2005-06	2006-07
Astronomy	Total FTEF	1.4	1.2	1.4	1.8	1.8	1.6
	Total FTES	29.71	26.5	32.8	19.24	27.89	28.64
	FTES / FTEF	21.2	22.1	23.4	10.7	15.5	17.9
Engineering General	Total FTEF	0.93	0.73	0.33	0.33	0.73	0.73
	Total FTES	5.22	5.76	3.05	3.59	5.1	5.95
	FTES / FTEF	5.6	7.9	9.2	10.9	7.0	8.2
Physical Science	Total FTEF	0.57	0.57	0.31	0.54	0.55	0.53
	Total FTES	8.12	7.69	5.24	8.44	6.84	5.88
	FTES / FTEF	14.2	13.5	16.9	15.6	12.4	11.1
Physics	Total FTEF	3.43	3.03	3.09	3.46	3.85	3.74
	Total FTES	37.61	41.43	45.3	37.48	46.05	45.02
	FTES / FTEF	11.0	13.7	14.7	10.8	12.0	12.0