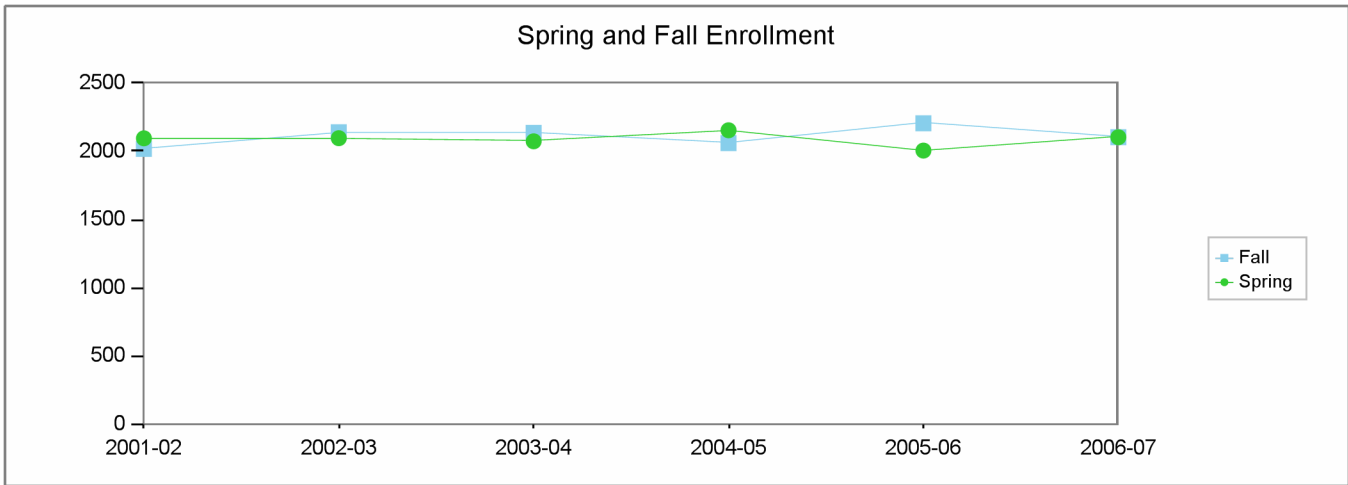


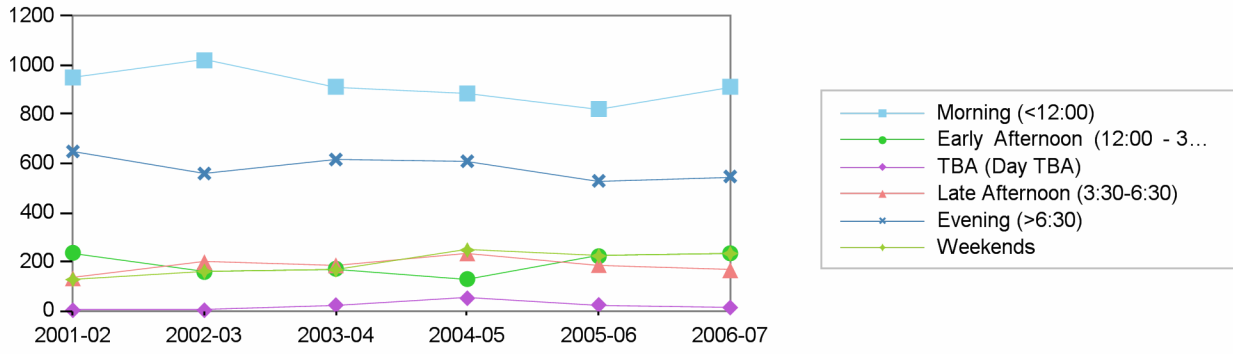
**Los Angeles City College  
Comprehensive Program Review 2008**

**Psychology Department  
Section IIa. Department Overview – Response to Demand: Enrollment**

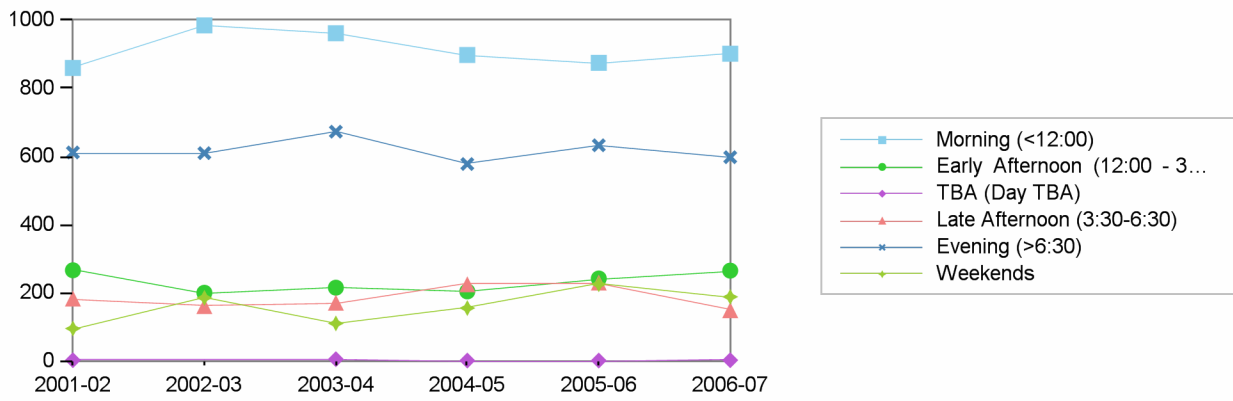


	2001-02	2002-03	2003-04	2004-05	2005-06	2006-07
Fall	2018	2141	2136	2061	2206	2104
Spring	2096	2097	2074	2155	2006	2104

Spring Enrollment by Time of Day



Fall Enrollment by Time of Day

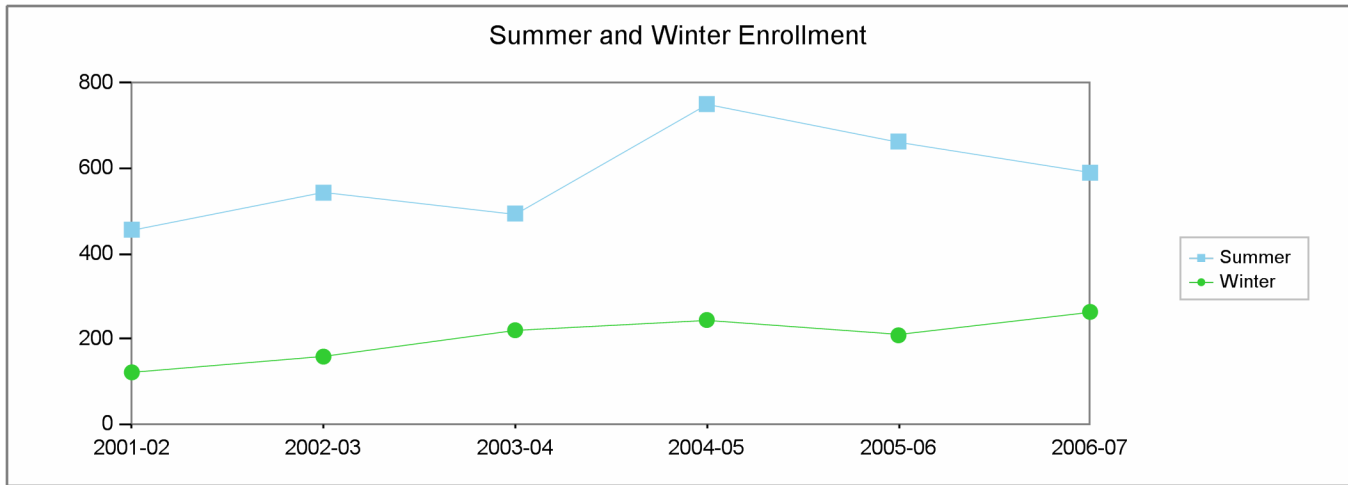


Morning (<12:00)    Early Afternoon (12:00 - 3:30)    TBA (Day TBA)    Late Afternoon (3:30-6:30)    Evening (>6:30)    Weekends

	Fall	Spring	Fall	Spring	Fall	Spring	Fall	Spring	Fall	Spring	Fall	Spring
2001-02	860	950	266	236	2	2	183	132	612	649	95	127
2002-03	985	1020	200	158		2	161	198	610	559	185	160
2003-04	962	912	215	171	5	23	171	185	673	616	110	167
2004-05	898	885	204	129	1	51	225	234	578	609	155	247
2005-06	875	822	242	222	1	24	230	186	633	529	225	223
2006-07	902	912	265	234	2	13	149	165	598	547	188	233

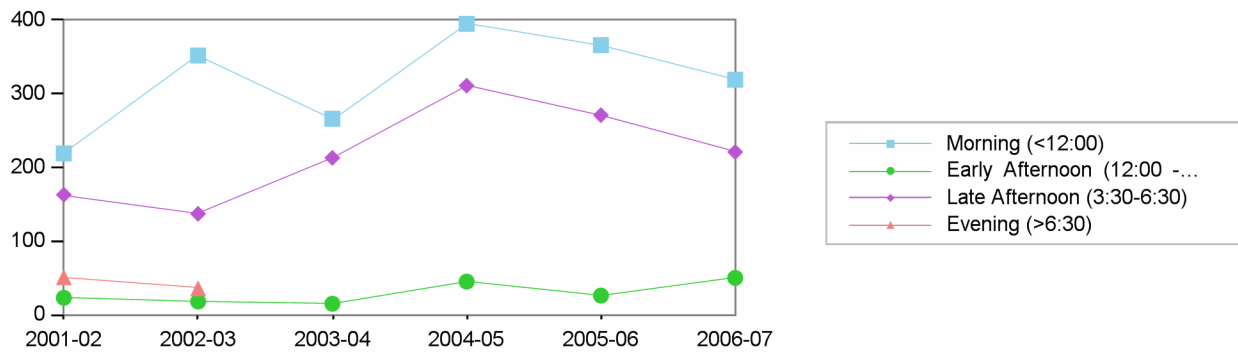
Los Angeles City College  
Comprehensive Program Review 2008

Psychology Department  
Section IIa. Department Overview – Response to Demand: Enrollment

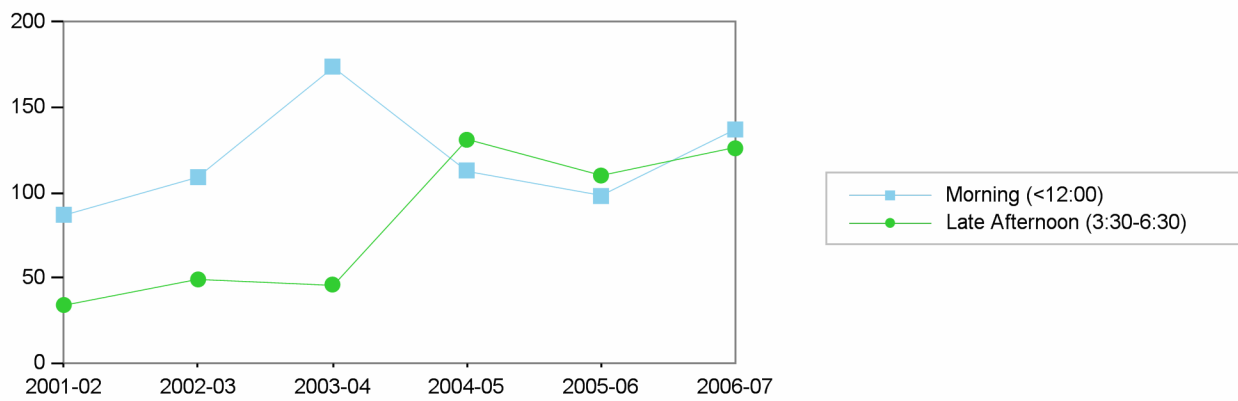


	2001-02	2002-03	2003-04	2004-05	2005-06	2006-07
Summer	456	543	494	751	663	590
Winter	121	158	220	244	208	263

Summer Enrollment by Time of Day



Winter Enrollment by Time of Day



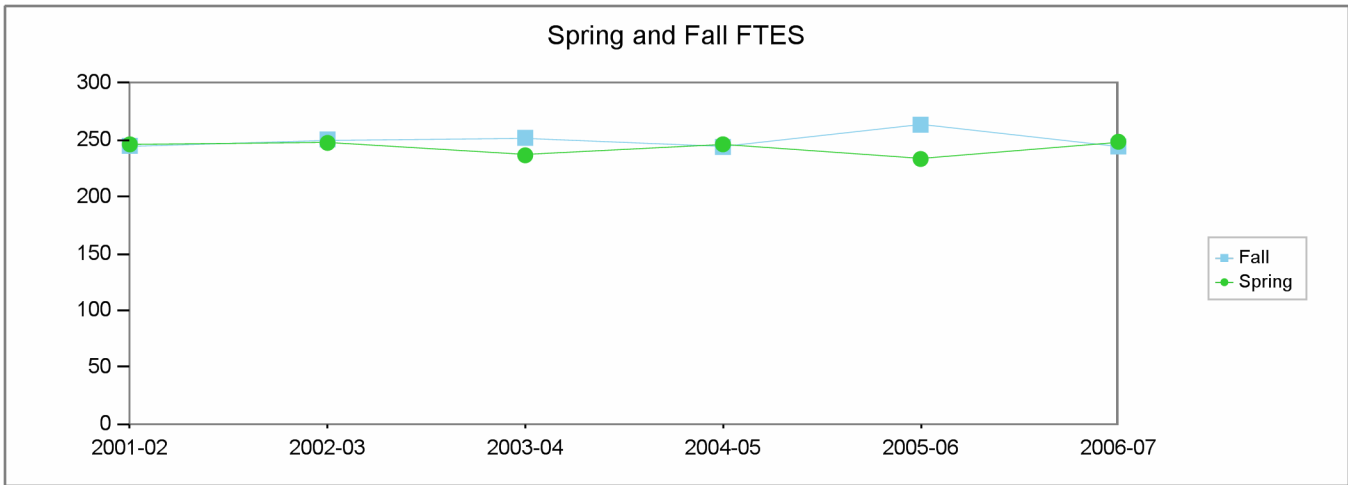
Morning (<12:00)    Early Afternoon (12:00 - 3:30)    Late Afternoon (3:30-6:30)    Evening (>6:30)

Summer    Winter    Summer    Summer    Winter    Summer

2001-02	219	87	23	163	34	51
2002-03	352	109	18	137	49	36
2003-04	266	174	15	213	46	
2004-05	395	113	45	311	131	
2005-06	366	98	26	271	110	
2006-07	319	137	50	221	126	

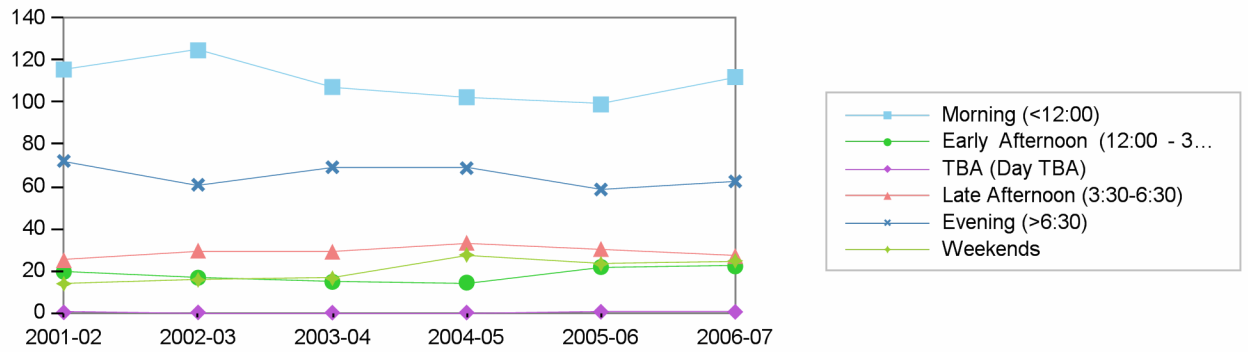
**Los Angeles City College  
Comprehensive Program Review 2008**

**Psychology Department  
Section IIa. Department Overview – Response to Demand: FTES**

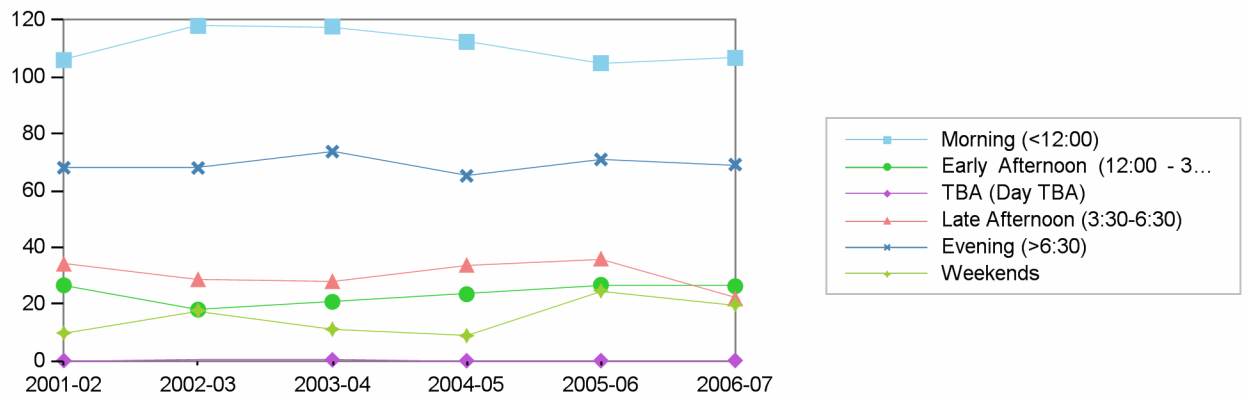


	2001-02	2002-03	2003-04	2004-05	2005-06	2006-07
Fall	245	251	252	244	263	244
Spring	246	247	237	246	233	249

Spring FTES by Time of Day



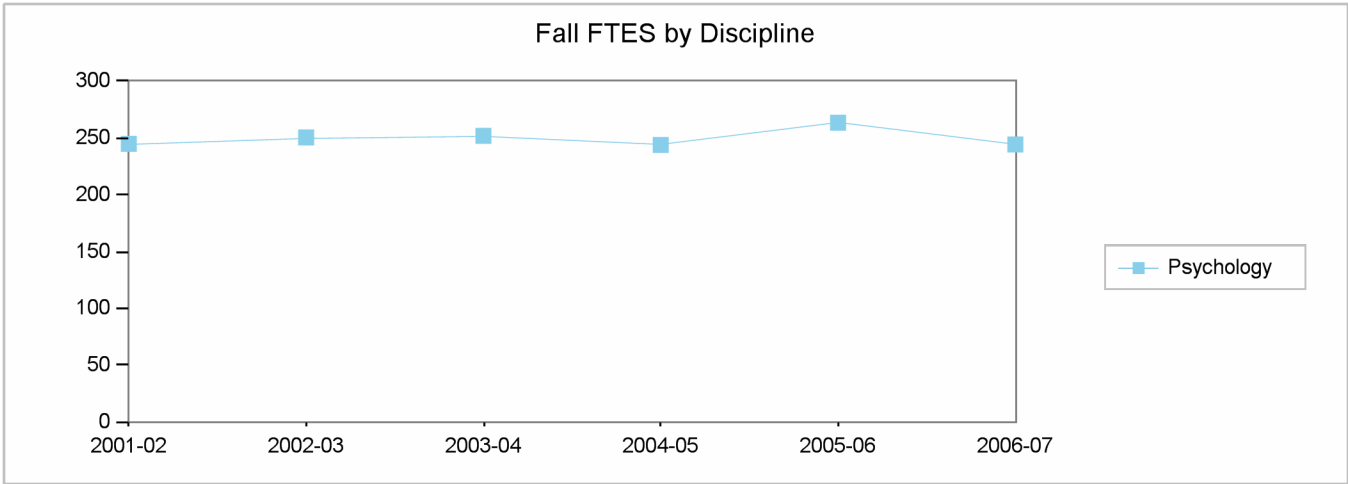
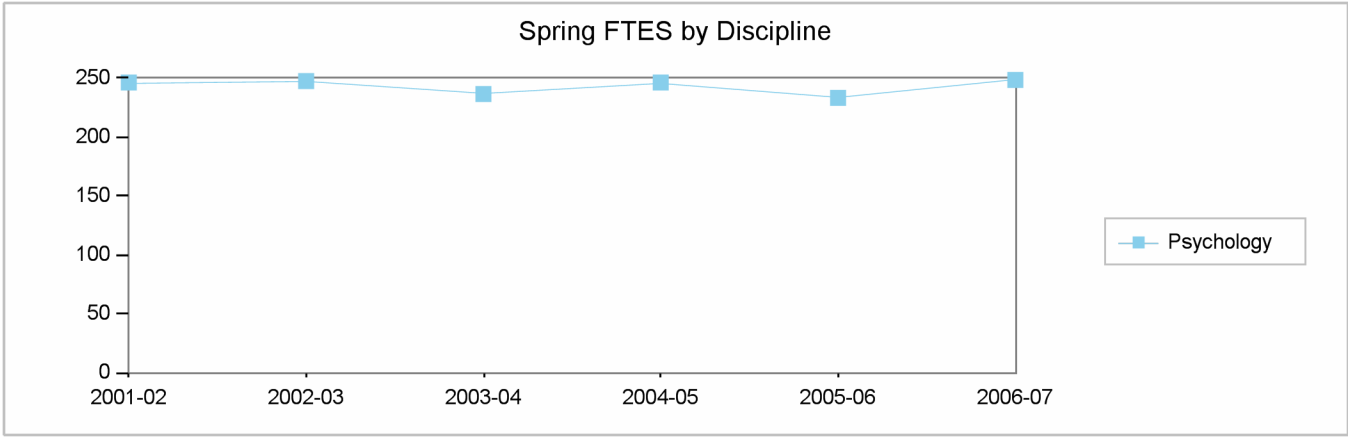
Fall FTES by Time of Day



Morning (<12:00)    Early Afternoon (12:00 - 3:30)    TBA (Day TBA)    Late Afternoon (3:30-6:30)    Evening (>6:30)    Weekends

Fall    Spring    Fall    Spring    Fall    Spring    Fall    Spring    Fall    Spring    Fall    Spring

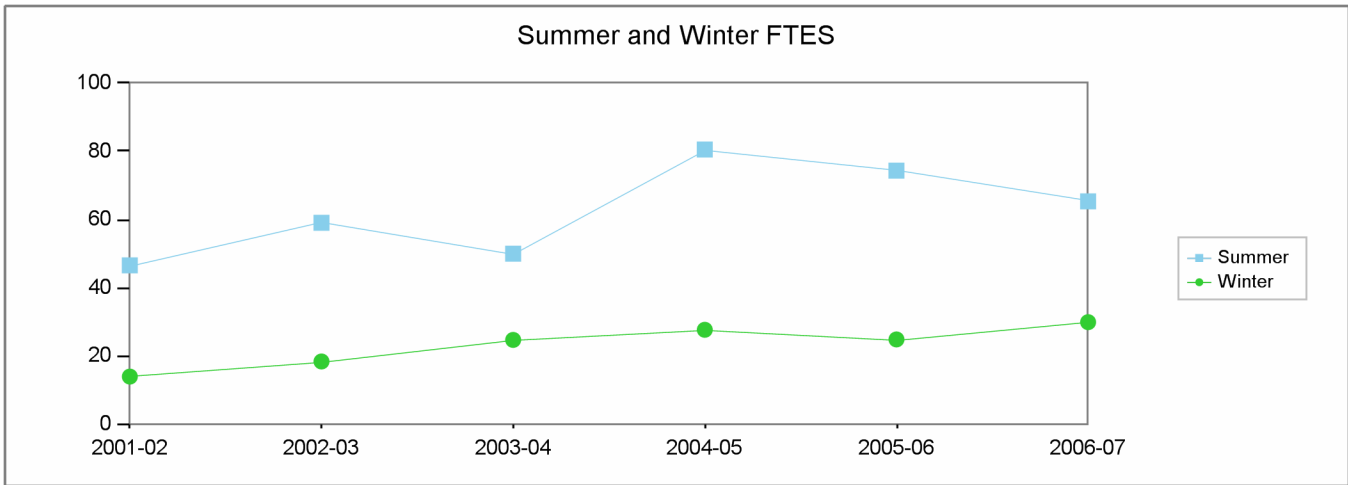
2001-02	106	116	27	19	0	0	34	25	68	72	10	14
2002-03	118	125	18	17		0	29	30	68	61	18	16
2003-04	118	107	21	15	0	0	28	29	74	69	11	16
2004-05	112	102	23	14	0	0	34	33	65	69	9	27
2005-06	105	99	27	22	0	0	36	30	71	59	25	23
2006-07	107	112	26	22	0	0	22	27	69	62	20	25



		2001-02	2002-03	2003-04	2004-05	2005-06	2006-07
Fall	Psychology	245	251	252	244	263	244
Spring	Psychology	246	247	237	246	233	249

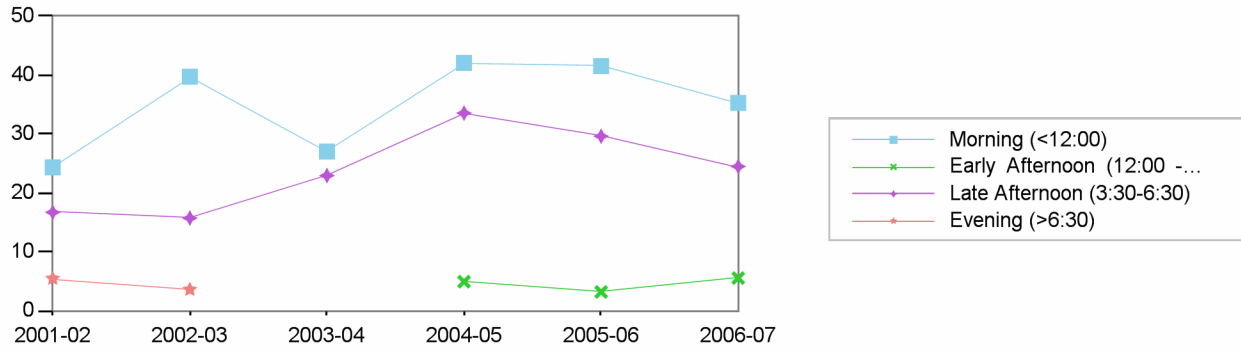
**Los Angeles City College  
Comprehensive Program Review 2008**

**Psychology Department  
Section IIa. Department Overview – Response to Demand: FTES**

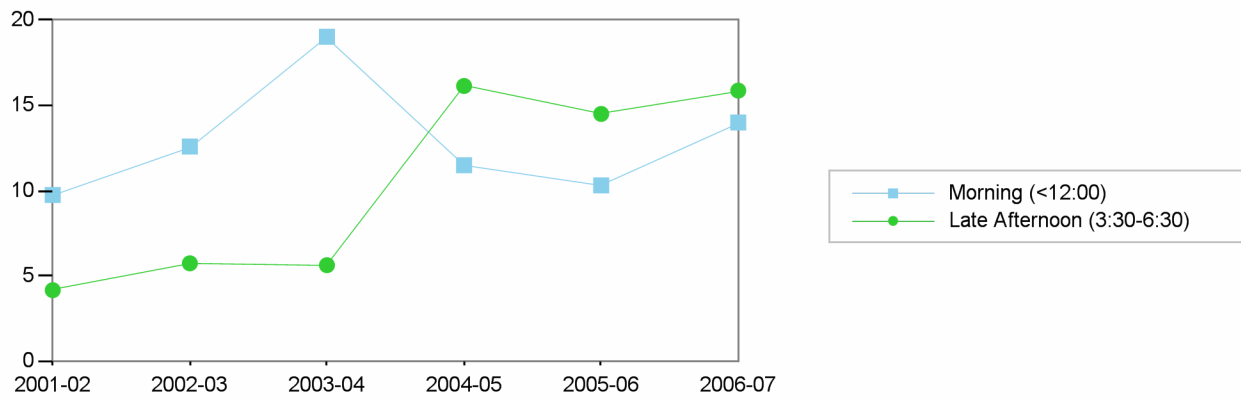


	2001-02	2002-03	2003-04	2004-05	2005-06	2006-07
Summer	47	59	50	81	74	65
Winter	14	18	25	28	25	30

Summer FTES by Time of Day



Winter FTES by Time of Day

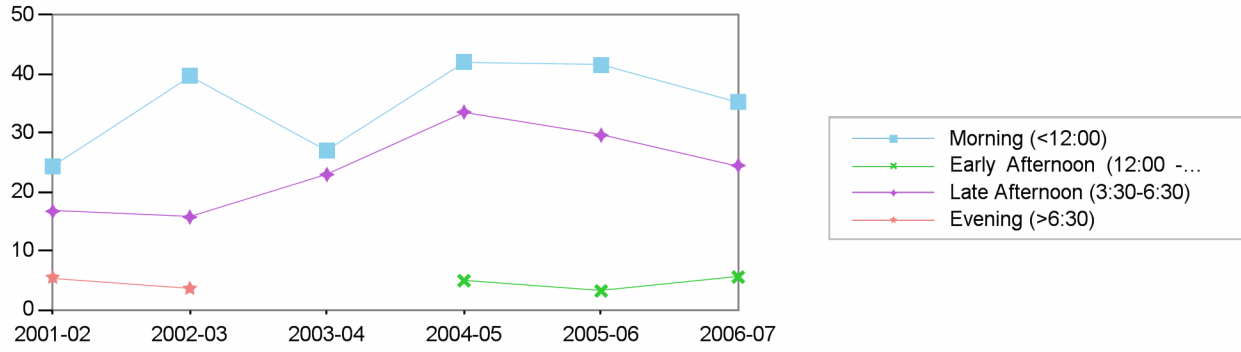


Morning (<12:00)    Early Afternoon (12:00 - 3:30)    Late Afternoon (3:30-6:30)    Evening (>6:30)

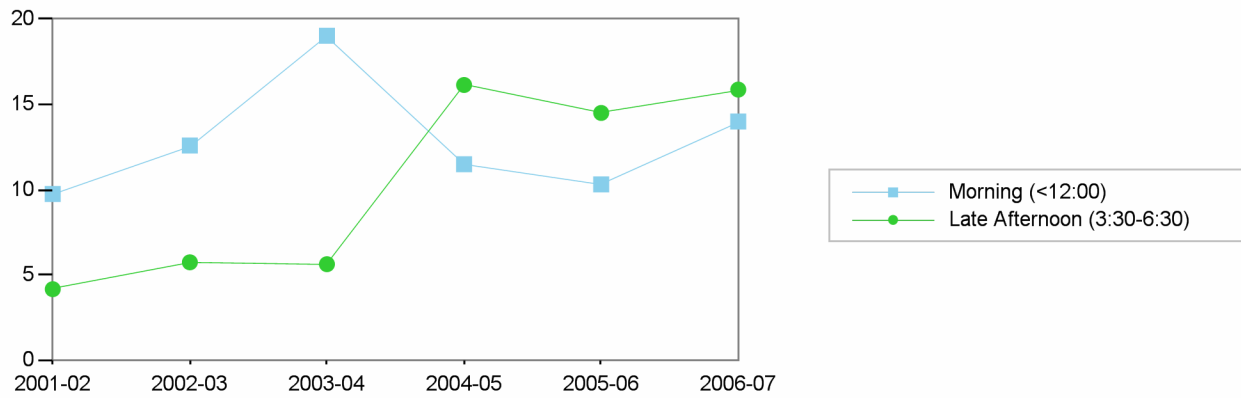
Summer    Winter    Summer    Summer    Winter    Summer

2001-02	24	10		17	4	5
2002-03	40	13		16	6	4
2003-04	27	19		23	6	
2004-05	42	11	5	34	16	
2005-06	42	10	3	30	15	
2006-07	35	14	6	24	16	

Summer FTES by Time of Day



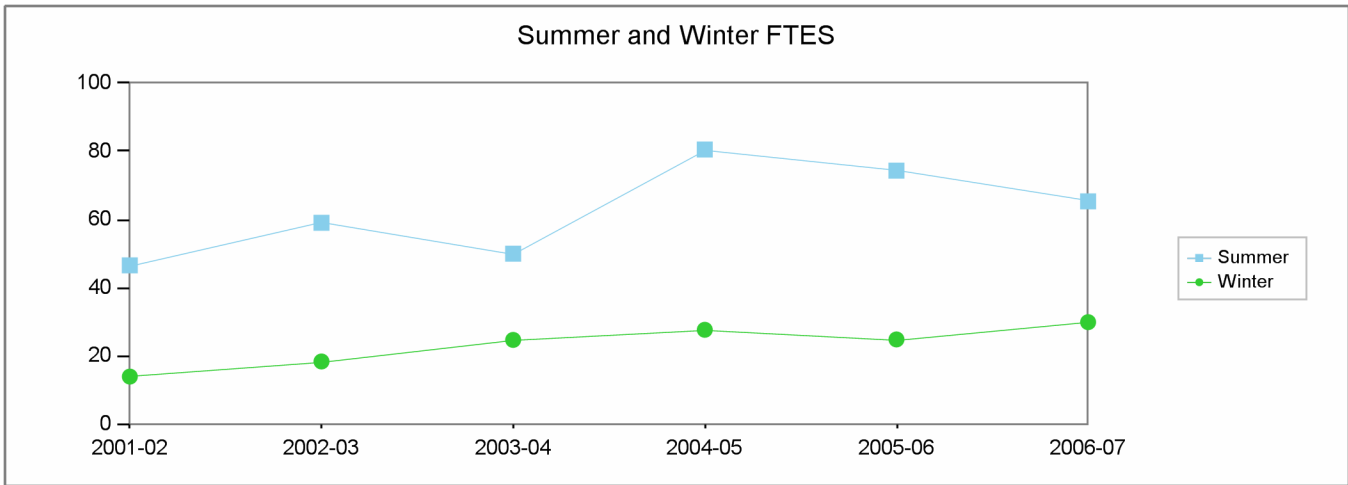
Winter FTES by Time of Day



		2001-02	2002-03	2003-04	2004-05	2005-06	2006-07
Summer	Psychology	47	59	50	81	74	65
Winter	Psychology	14	18	25	28	25	30

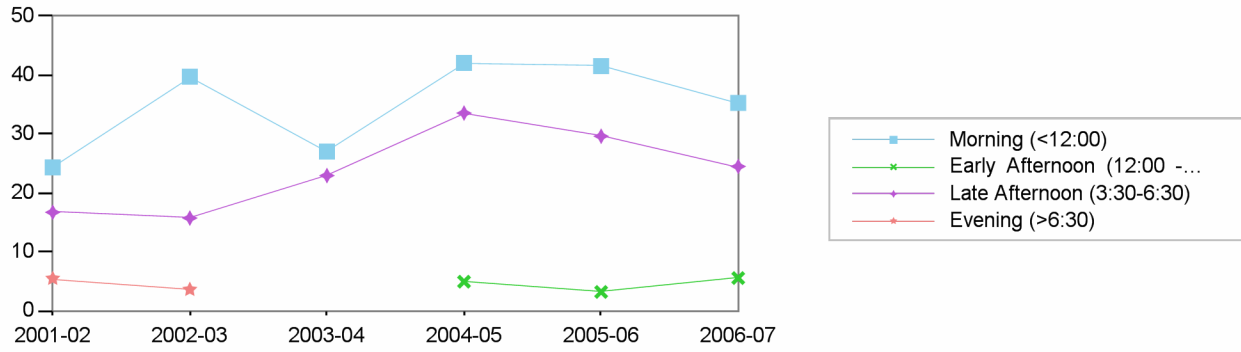
**Los Angeles City College**  
**Comprehensive Program Review 2008**

**Psychology Department**  
**Section IIa. Department Overview – Response to Demand: FTES**

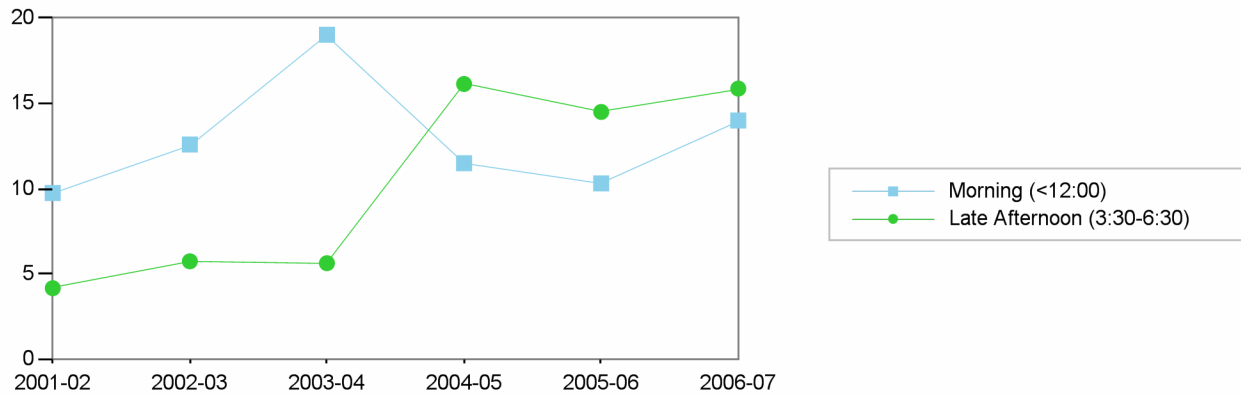


	2001-02	2002-03	2003-04	2004-05	2005-06	2006-07
Summer	47	59	50	81	74	65
Winter	14	18	25	28	25	30

Summer FTES by Time of Day



Winter FTES by Time of Day

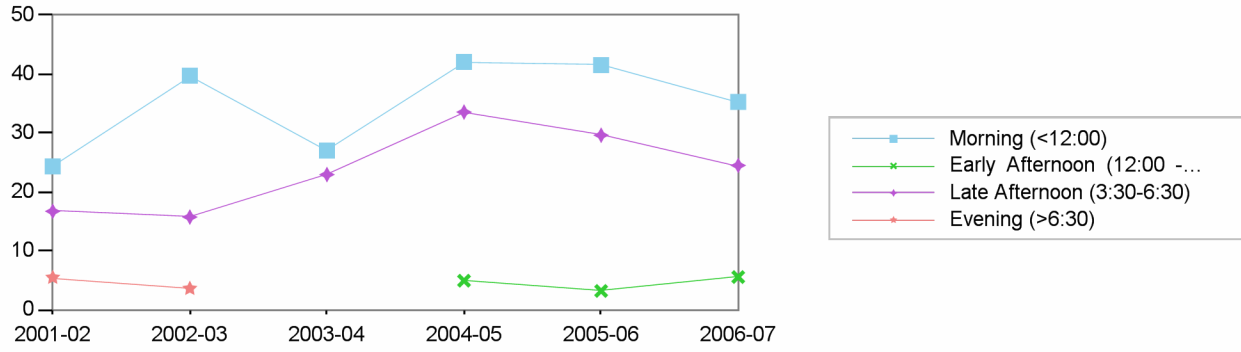


Morning (<12:00)    Early Afternoon (12:00 - 3:30)    Late Afternoon (3:30-6:30)    Evening (>6:30)

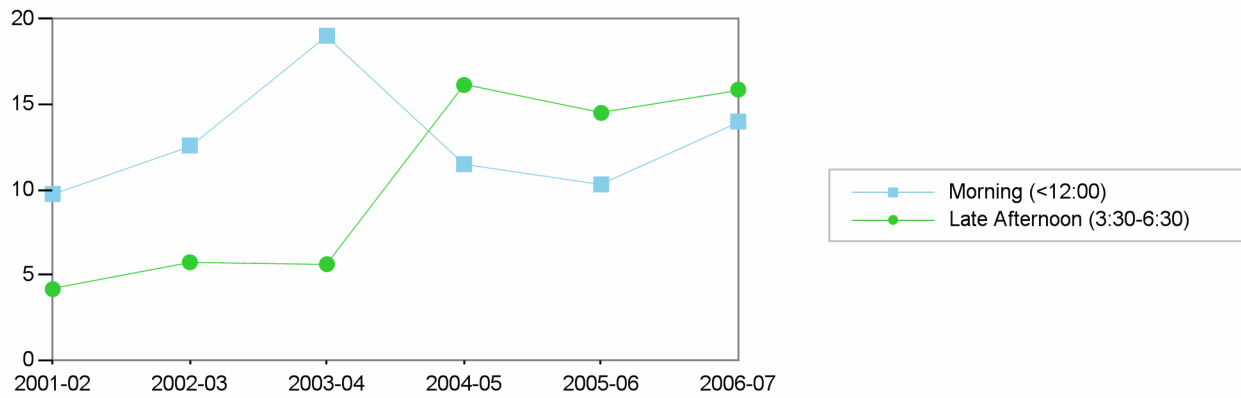
Summer    Winter    Summer    Summer    Winter    Summer

2001-02	24	10		17	4	5
2002-03	40	13		16	6	4
2003-04	27	19		23	6	
2004-05	42	11	5	34	16	
2005-06	42	10	3	30	15	
2006-07	35	14	6	24	16	

Summer FTES by Time of Day



Winter FTES by Time of Day

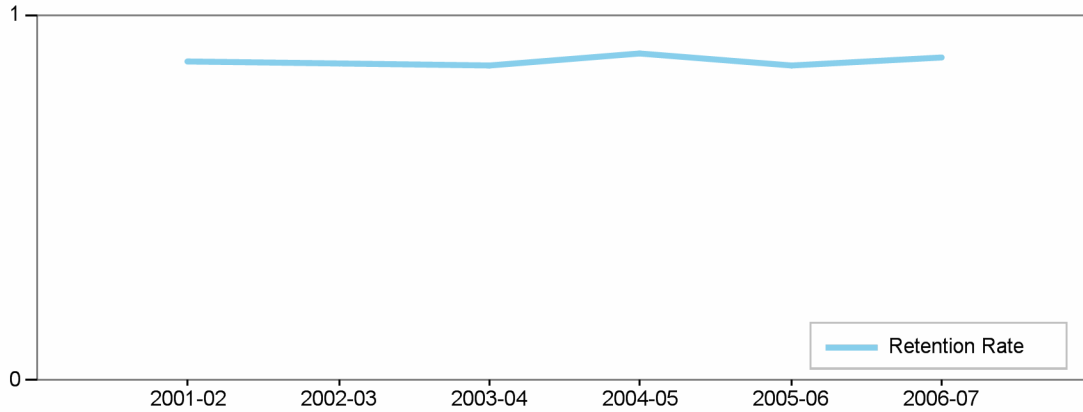


		2001-02	2002-03	2003-04	2004-05	2005-06	2006-07
Summer	Psychology	47	59	50	81	74	65
Winter	Psychology	14	18	25	28	25	30

**Los Angeles City College**  
**Comprehensive Program Review 2008**

**Psychology Department**  
**Section IIc. Department Overview – Student Achievements**

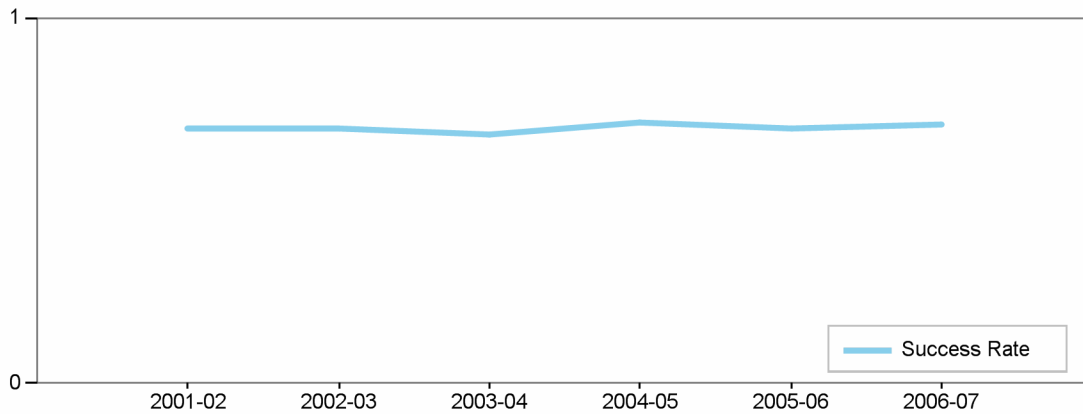
Department's Retention Rate



Retention Rate=  
 Numerator: Number of enrollments with A,B,C,D,F,CR,NC,I  
 Denominator: Number of enrollments with A,B,C,D,F,CR,NC,W,I

<b>Retention Rate</b>	2001-02	2002-03	2003-04	2004-05	2005-06	2006-07
Psychology	87 %	87 %	86 %	89 %	86 %	88 %

Department's Success Rate

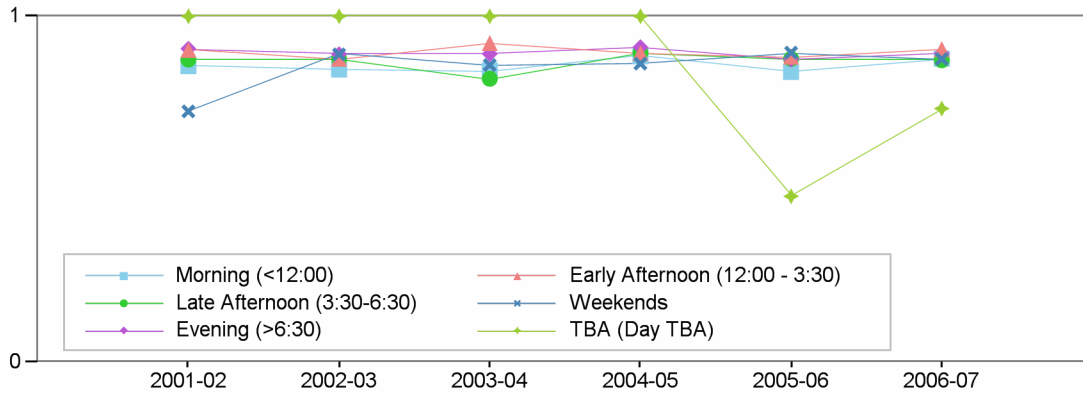


Success Rate =  
 Numerator: Number of enrollments with A,B,C,CR  
 Denominator: Number of enrollments with A,B,C,D,F,CR,NC,W,I

<b>Success Rate</b>	2001-02	2002-03	2003-04	2004-05	2005-06	2006-07
Psychology	70 %	70 %	68 %	71 %	69 %	71 %

## Department Success and Retention Rates by Time of Day

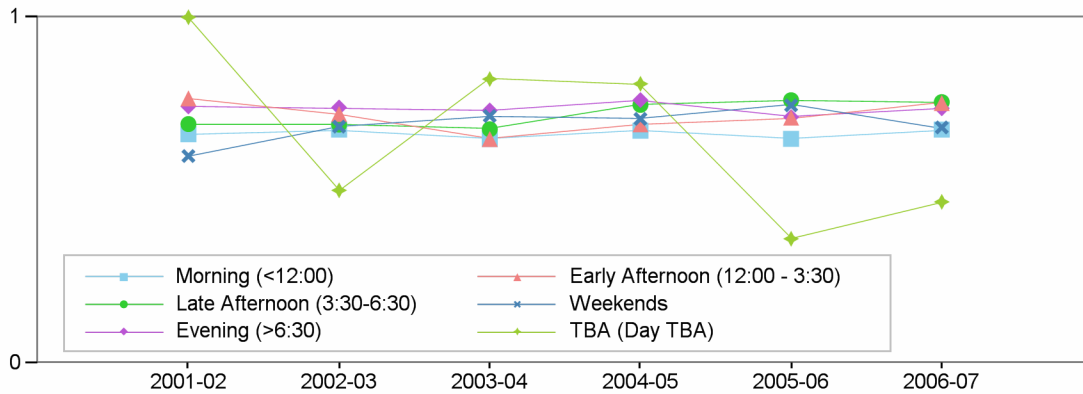
### Retention Rate by Time of Day



#### Retention Rate

	2001-02	2002-03	2003-04	2004-05	2005-06	2006-07
Morning (<12:00)	86 %	85 %	84 %	88 %	84 %	88 %
Late Afternoon (3:30-6:30)	88 %	88 %	82 %	89 %	88 %	87 %
Evening (>6:30)	91 %	89 %	89 %	91 %	88 %	89 %
Early Afternoon (12:00 - 3:30)	90 %	88 %	92 %	89 %	88 %	91 %
Weekends	73 %	89 %	86 %	86 %	90 %	88 %
TBA (Day TBA)	100 %	100 %	100 %	100 %	48 %	73 %

### Success Rate by Time of Day

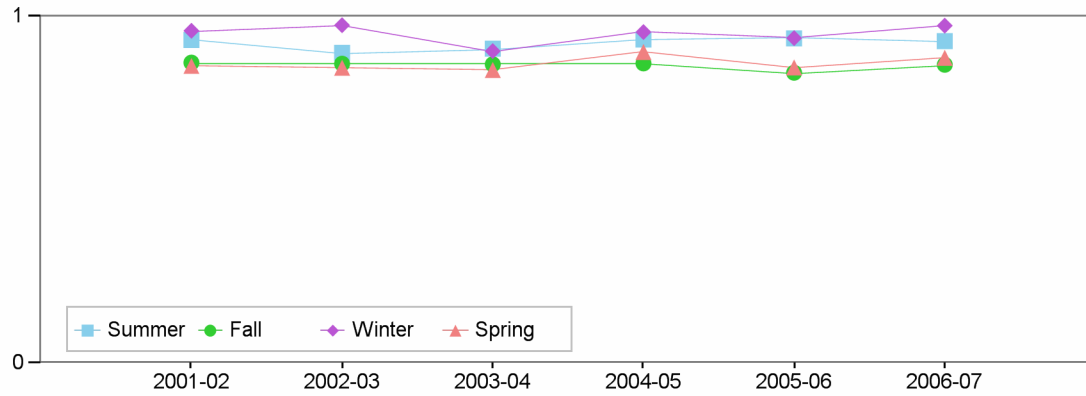


#### Success Rate

	2001-02	2002-03	2003-04	2004-05	2005-06	2006-07
Morning (<12:00)	66 %	68 %	65 %	67 %	65 %	68 %
Late Afternoon (3:30-6:30)	69 %	69 %	68 %	75 %	76 %	75 %
Evening (>6:30)	74 %	74 %	73 %	76 %	71 %	74 %
Early Afternoon (12:00 - 3:30)	77 %	72 %	65 %	69 %	71 %	75 %
Weekends	60 %	68 %	71 %	71 %	75 %	68 %
TBA (Day TBA)	100 %	50 %	82 %	81 %	36 %	47 %

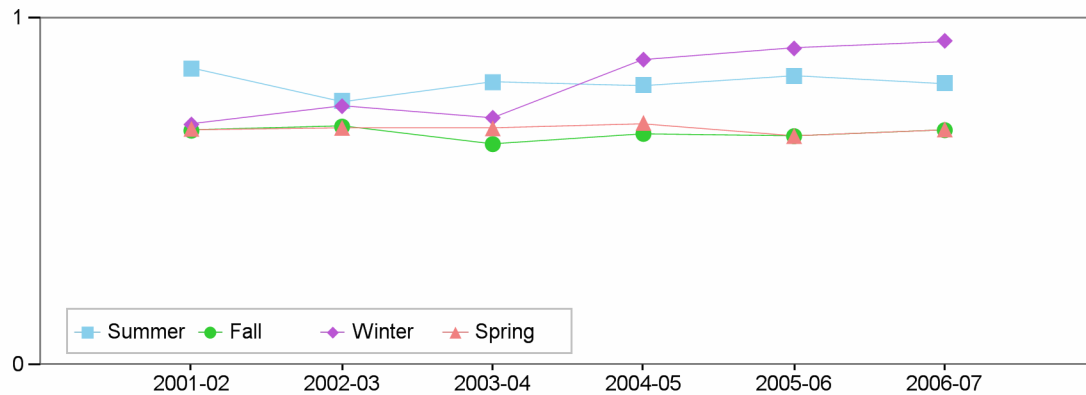
## Department Success and Retention Rates by Term

### Retention Rate by Term



Retention Rate	2001-02	2002-03	2003-04	2004-05	2005-06	2006-07
Summer	93 %	90 %	91 %	93 %	94 %	93 %
Fall	87 %	86 %	86 %	86 %	84 %	86 %
Winter	96 %	97 %	90 %	95 %	94 %	97 %
Spring	86 %	85 %	85 %	90 %	85 %	88 %

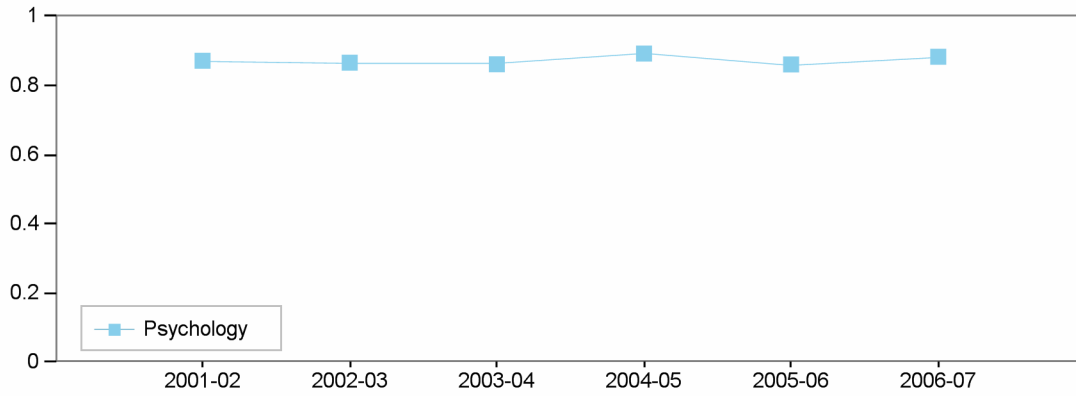
### Success Rate by Term



Success Rate	2001-02	2002-03	2003-04	2004-05	2005-06	2006-07
Summer	86 %	76 %	82 %	81 %	83 %	81 %
Fall	68 %	69 %	64 %	67 %	66 %	68 %
Winter	69 %	75 %	71 %	88 %	91 %	94 %
Spring	68 %	68 %	68 %	70 %	66 %	68 %

## Department Success and Retention Rates by Discipline

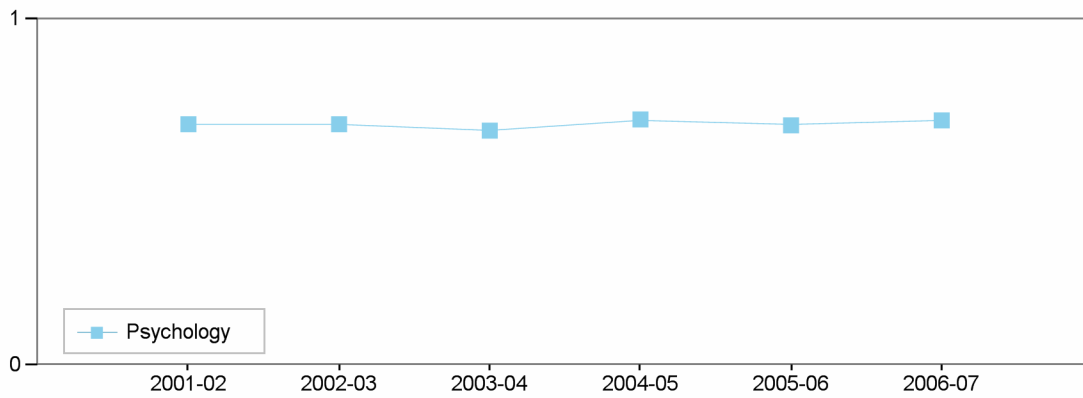
### Retention Rate by Discipline



#### Retention Rate

	2001-02	2002-03	2003-04	2004-05	2005-06	2006-07
Psychology	87 %	87 %	86 %	89 %	86 %	88 %

### Success Rate by Discipline



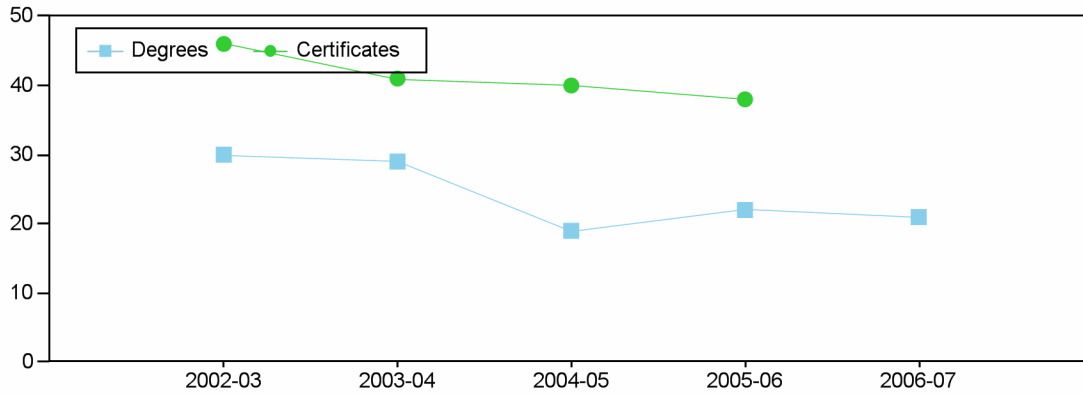
#### Success Rate

	2001-02	2002-03	2003-04	2004-05	2005-06	2006-07
Psychology	70 %	70 %	68 %	71 %	69 %	71 %

---

**Los Angeles City College**  
**Comprehensive Program Review 2008**  
**Psychology Department**  
**Section IIc. Department Overview – Student Achievements**

Department's Degrees and Certificates



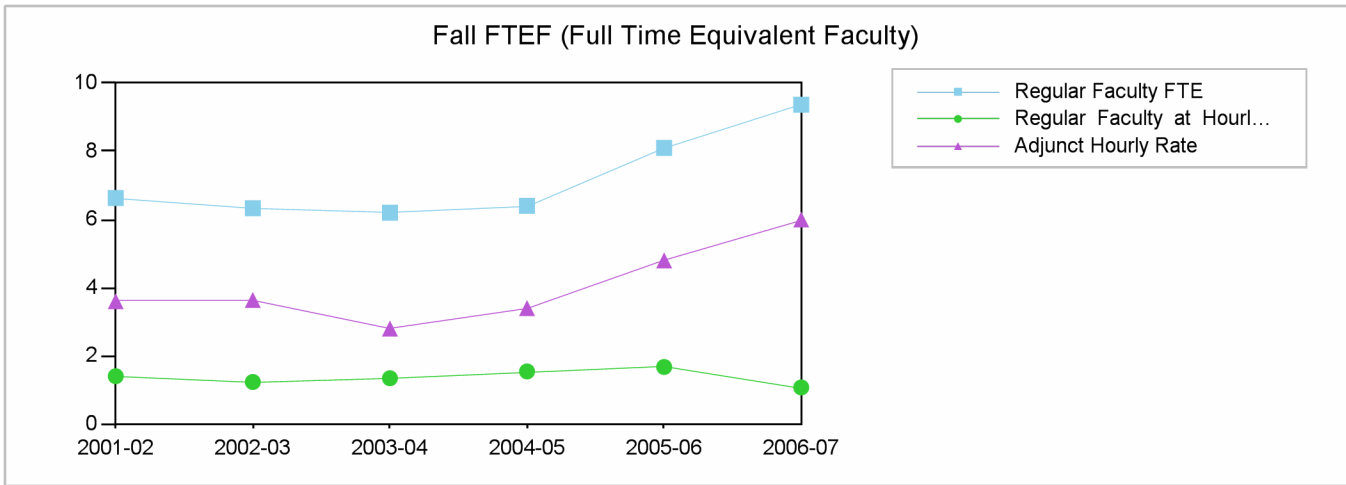
	2002-03	2003-04	2004-05	2005-06	2006-07
Degrees	30	29	19	22	21
Certificates	46	41	40	38	
<b>Total</b>	<b>76</b>	<b>70</b>	<b>59</b>	<b>60</b>	<b>21</b>

**Department's Awards by Program**

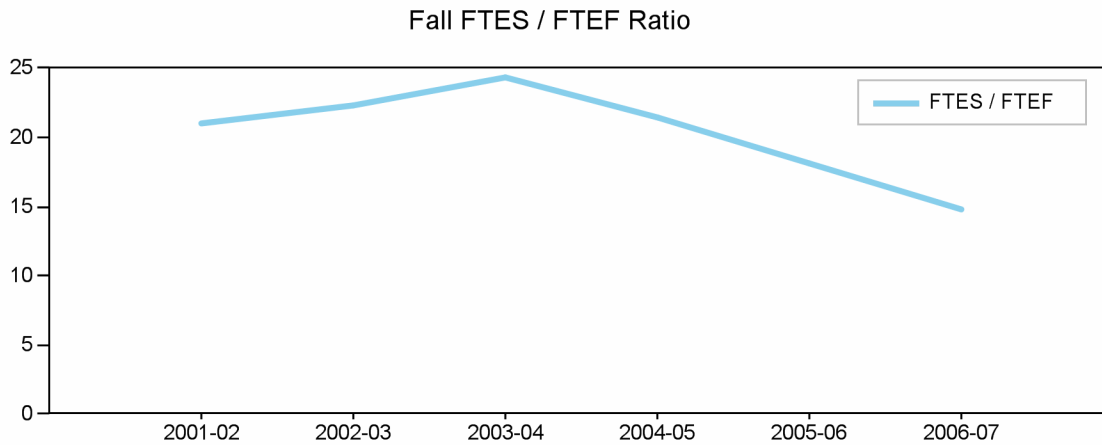
		2002-03	2003-04	2004-05	2005-06	2006-07
Degrees	Human Services - Drug/Alcohol	2	6	7	9	7
	Human Services - Generalist	28	23	12	13	14
	<b>Total</b>	<b>30</b>	<b>29</b>	<b>19</b>	<b>22</b>	<b>21</b>
Certificates	Human Services - Drug/Alcohol	26	29	24	26	
	Human Services - Generalist	20	12	16	12	
	<b>Total</b>	<b>46</b>	<b>41</b>	<b>40</b>	<b>38</b>	

**Los Angeles City College**  
**Comprehensive Program Review 2008**

**Psychology Department**  
**Section IId. Department Overview – FTEF**

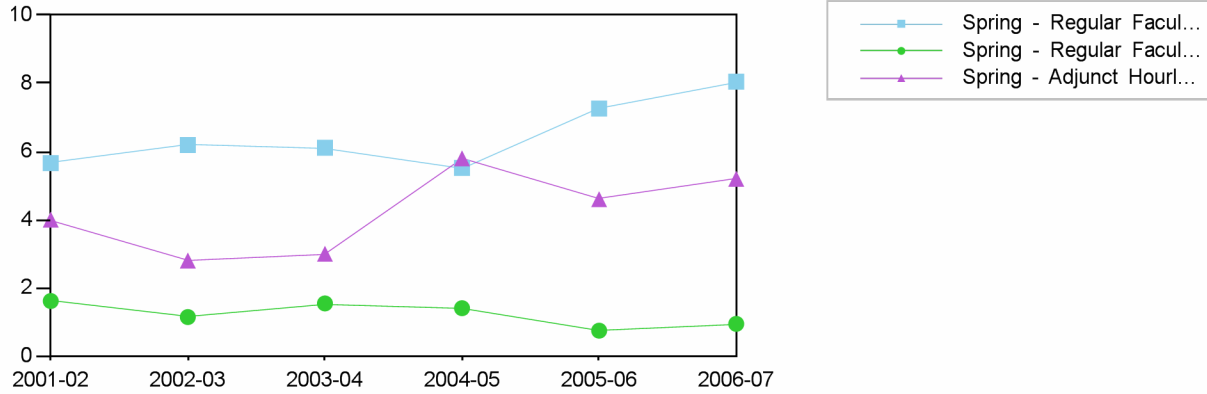


Fall	2001-02	2002-03	2003-04	2004-05	2005-06	2006-07
Regular Faculty FTE	6.63	6.33	6.2	6.4	8.1	9.37
Regular Faculty at Hourly Rate	1.4	1.23	1.34	1.54	1.67	1.07
Adjunct Hourly Rate	3.6	3.64	2.8	3.4	4.8	6
Total	11.63	11.2	10.34	11.34	14.57	16.44



Fall	2001-02	2002-03	2003-04	2004-05	2005-06	2006-07
Total FTEF	11.63	11.2	10.34	11.34	14.57	16.44
Total FTES	244.84	250.54	251.96	243.83	263.45	244.25
FTES / FTEF	21.1	22.4	24.4	21.5	18.1	14.9

Spring FTEF (Full Time Equivalent Faculty)

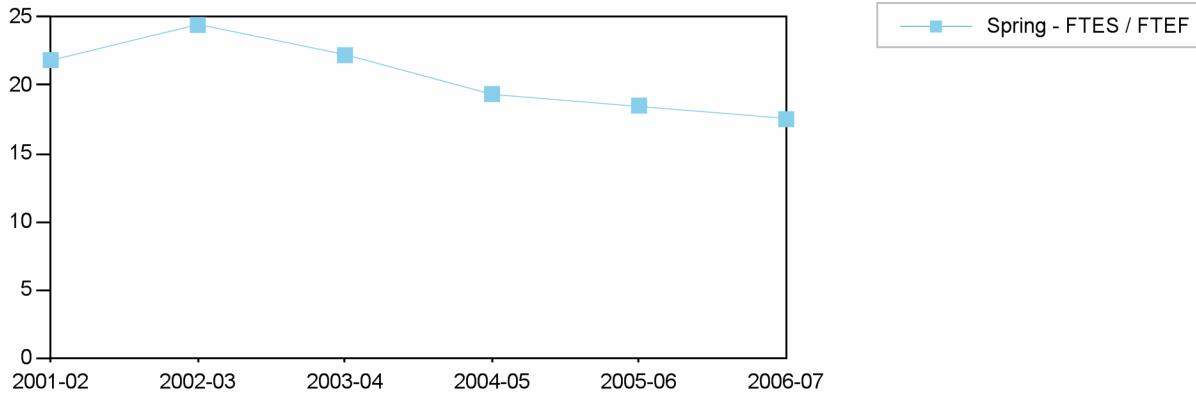


Spring

**2001-02 2002-03 2003-04 2004-05 2005-06 2006-07**

	Spring	Spring	Spring	Spring	Spring	Spring
Regular Faculty FTE	5.66	6.19	6.11	5.52	7.26	8.05
Regular Faculty at Hourly Rate	1.61	1.14	1.54	1.4	0.74	0.94
Adjunct Hourly Rate	4	2.8	3	5.8	4.6	5.2
Total	11.27	10.13	10.65	12.72	12.6	14.19

Spring FTES / FTEF Ratio



Spring

**2001-02 2002-03 2003-04 2004-05 2005-06 2006-07**

	Spring	Spring	Spring	Spring	Spring	Spring
Total FTEF	11.27	10.13	10.65	12.72	12.6	14.19
Total FTES	246.21	247.47	236.54	246.24	233.3	248.51
FTES / FTEF	21.8	24.4	22.2	19.4	18.5	17.5

Fall FTES / FTEF Ratio by Discipline



**Psychology**

	2001-02	2002-03	2003-04	2004-05	2005-06	2006-07
Total FTEF	11.63	11.2	10.34	11.34	14.57	16.44
Total FTES	244.84	250.54	251.96	243.83	263.45	244.25
FTES / FTEF	21.1	22.4	24.4	21.5	18.1	14.9