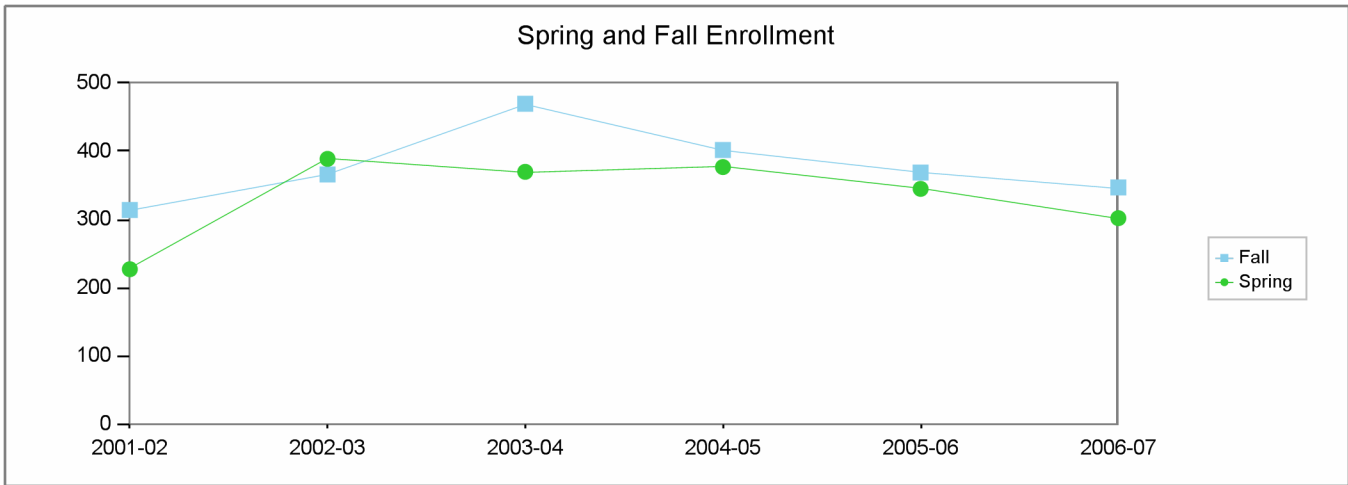


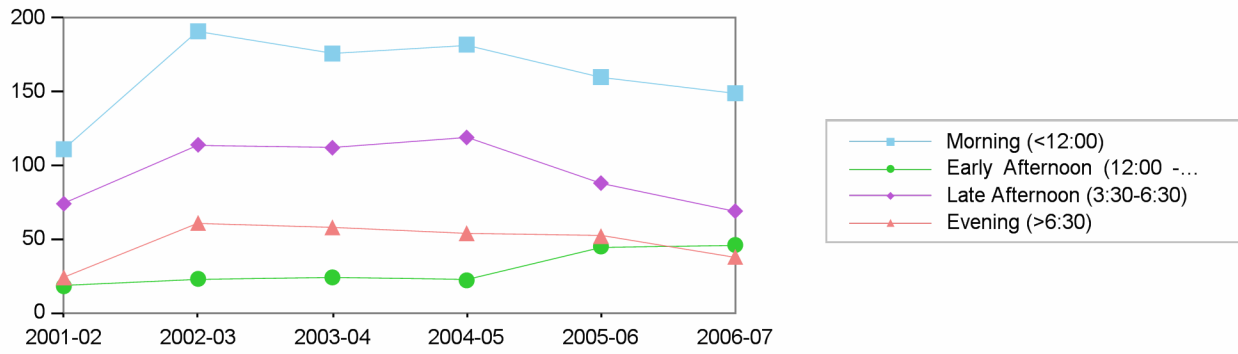
**Los Angeles City College
Comprehensive Program Review 2008**

**Radiologic Technology Department
Section IIa. Department Overview – Response to Demand: Enrollment**

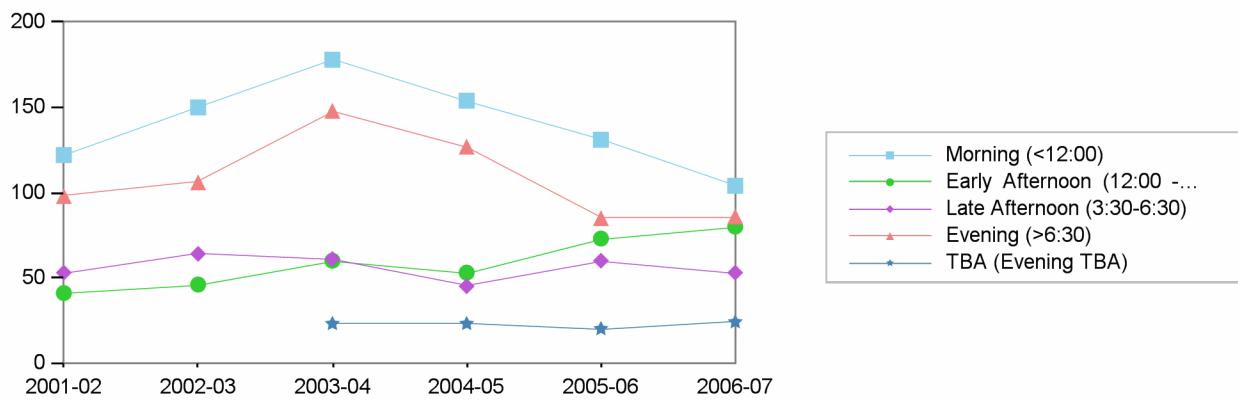


	2001-02	2002-03	2003-04	2004-05	2005-06	2006-07
Fall	314	366	470	402	369	347
Spring	227	389	370	377	345	302

Spring Enrollment by Time of Day



Fall Enrollment by Time of Day



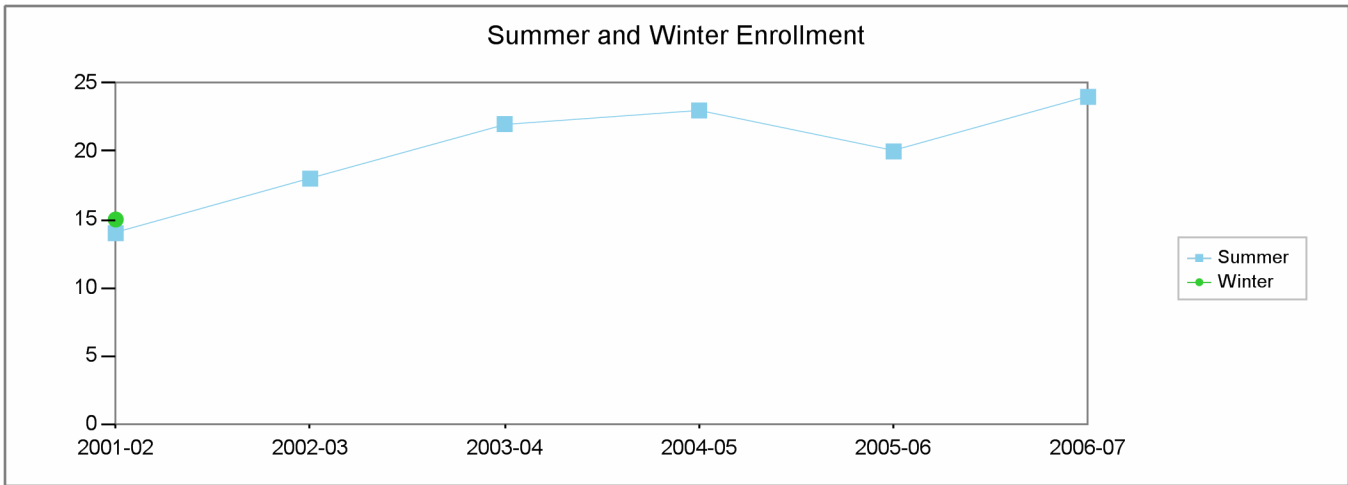
Morning (<12:00) Early Afternoon (12:00 - 3:30) Late Afternoon (3:30-6:30) Evening (>6:30) TBA (Evening TBA)

Fall Spring Fall Spring Fall Spring Fall Spring Fall

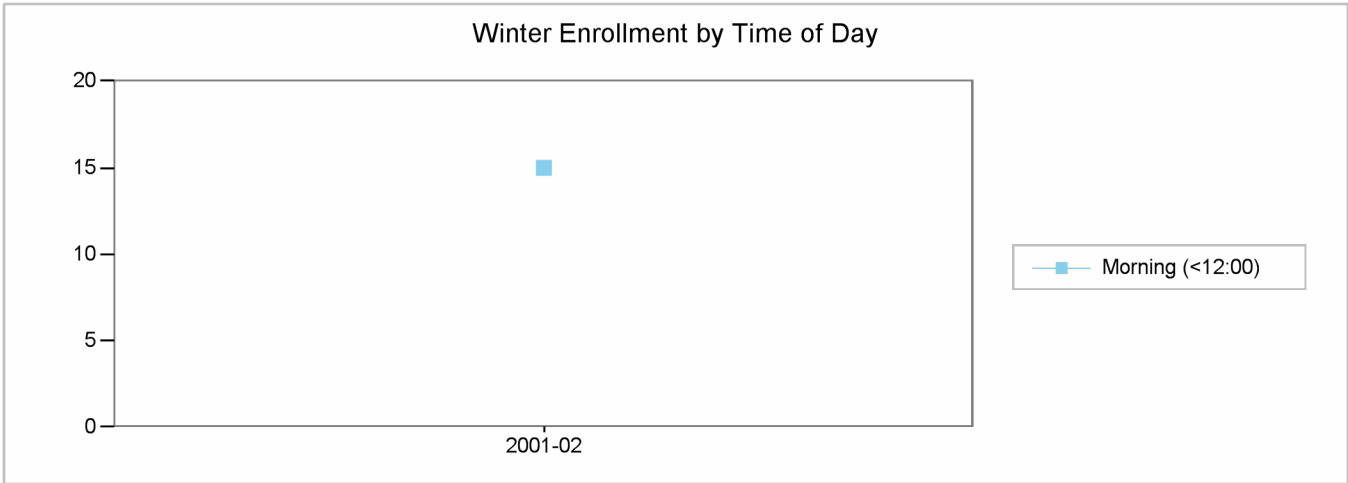
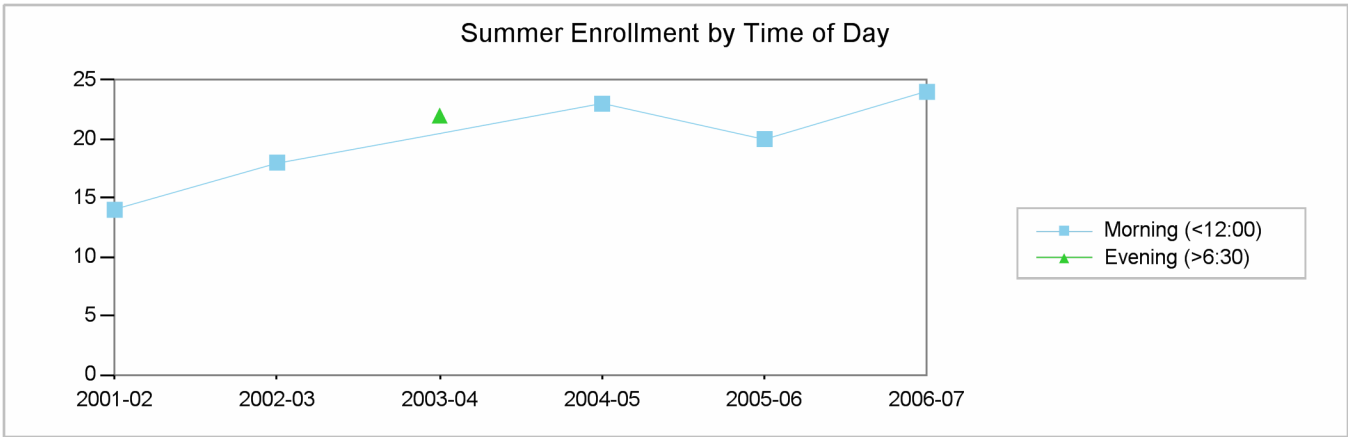
2001-02	122	111	41	18	53	74	98	24	
2002-03	150	191	46	23	64	114	106	61	
2003-04	178	176	60	24	61	112	148	58	23
2004-05	154	182	53	22	45	119	127	54	23
2005-06	131	160	73	45	60	88	85	52	20
2006-07	104	149	80	46	53	69	86	38	24

**Los Angeles City College
Comprehensive Program Review 2008**

**Radiologic Technology Department
Section IIa. Department Overview – Response to Demand: Enrollment**



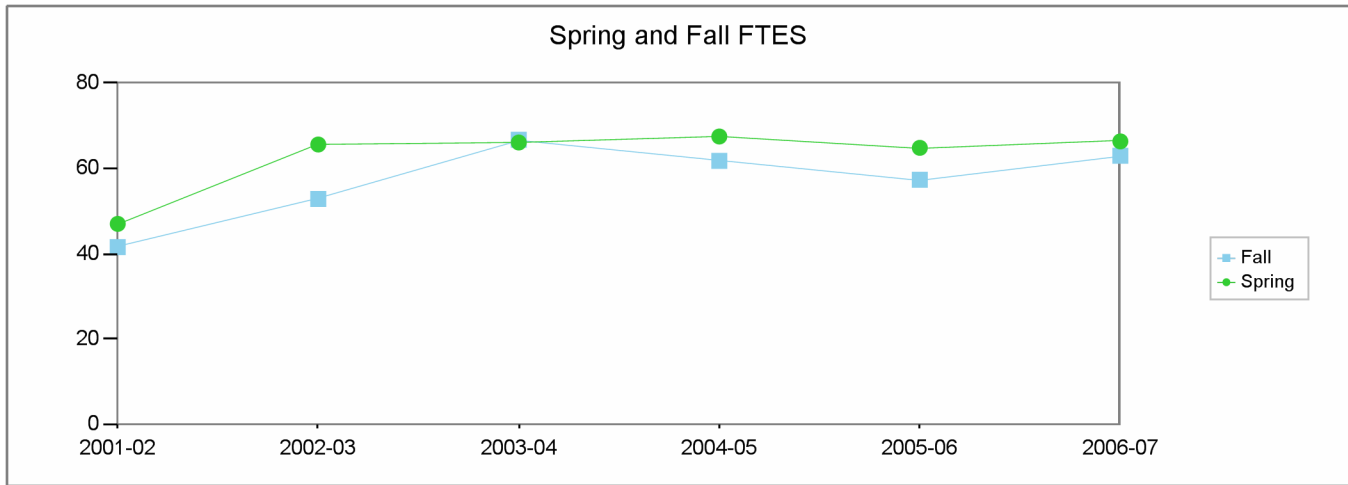
	2001-02	2002-03	2003-04	2004-05	2005-06	2006-07
Summer	14	18	22	23	20	24
Winter	15					



	Morning (<12:00)	Evening (>6:30)	
	Summer	Winter	Summer
2001-02	14	15	
2002-03	18		
2003-04			22
2004-05	23		
2005-06	20		
2006-07	24		

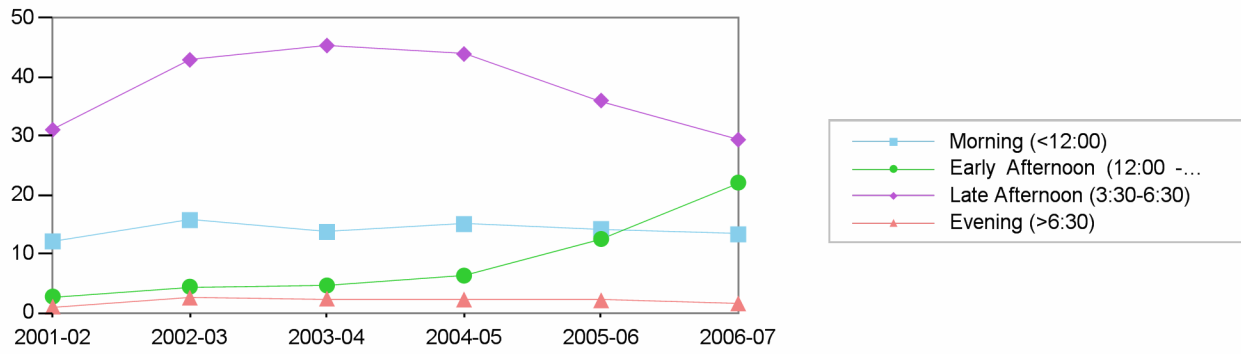
**Los Angeles City College
Comprehensive Program Review 2008**

**Radiologic Technology Department
Section IIa. Department Overview – Response to Demand: FTES**

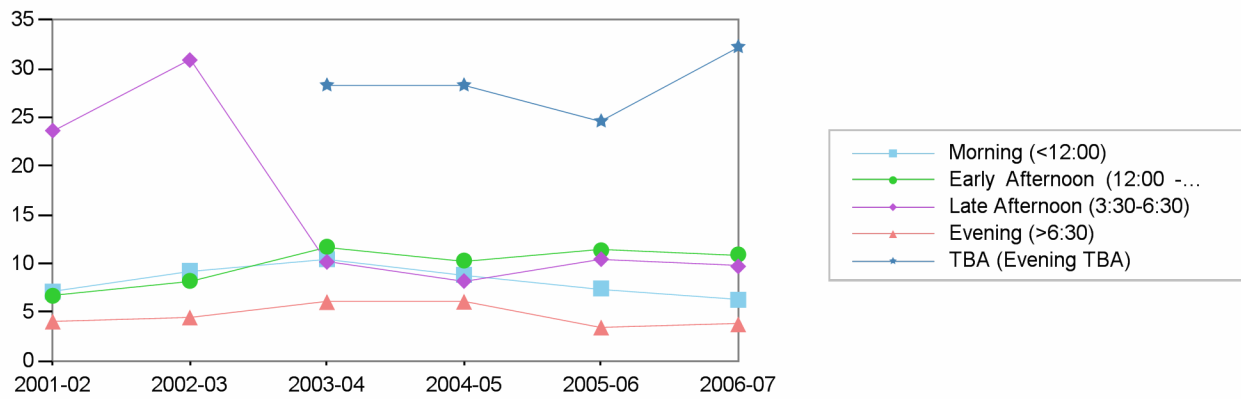


	2001-02	2002-03	2003-04	2004-05	2005-06	2006-07
Fall	42	53	67	62	57	63
Spring	47	66	66	68	65	66

Spring FTES by Time of Day

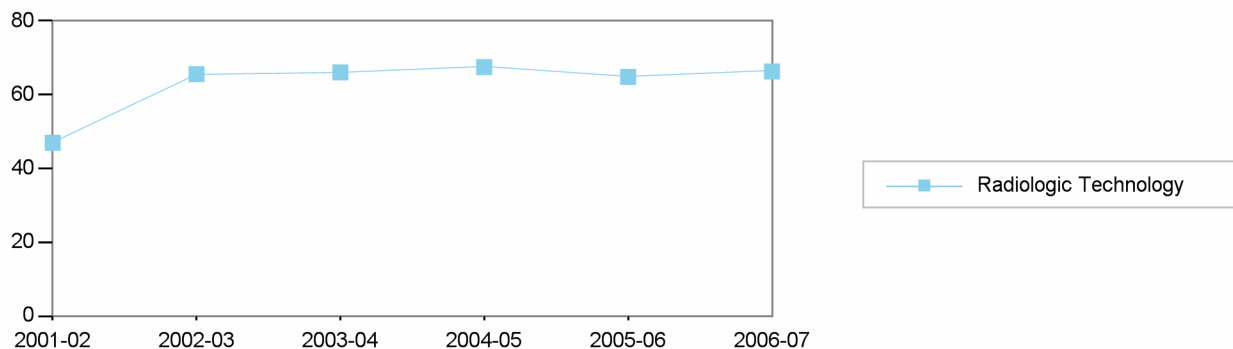


Fall FTES by Time of Day

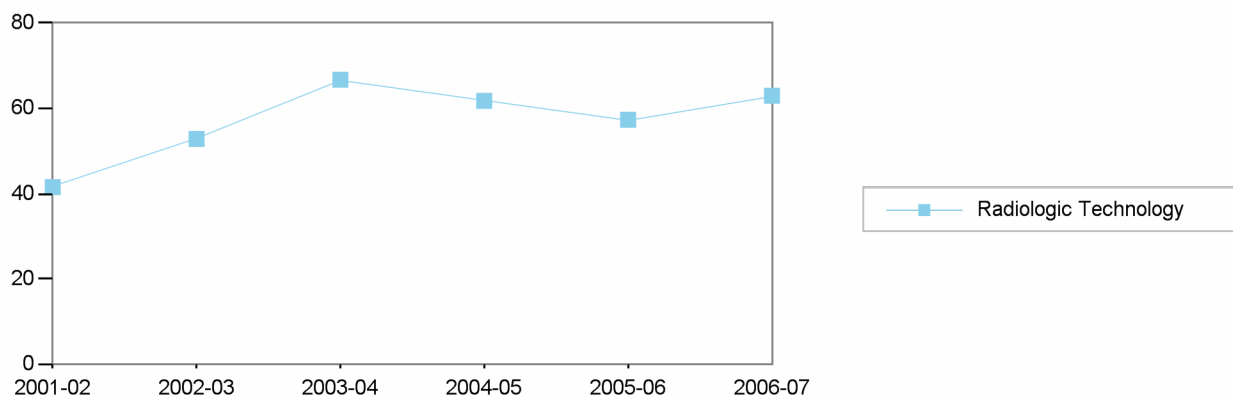


	Morning (<12:00)		Early Afternoon (12:00 - 3:30)		Late Afternoon (3:30-6:30)		Evening (>6:30)		TBA (Evening TBA)
	Fall	Spring	Fall	Spring	Fall	Spring	Fall	Spring	
2001-02	7	12	7	3	24	31	4	1	
2002-03	9	16	8	4	31	43	4	3	
2003-04	10	14	12	5	10	45	6	2	28
2004-05	9	15	10	6	8	44	6	2	28
2005-06	7	14	11	13	10	36	3	2	25
2006-07	6	13	11	22	10	29	4	2	32

Spring FTES by Discipline



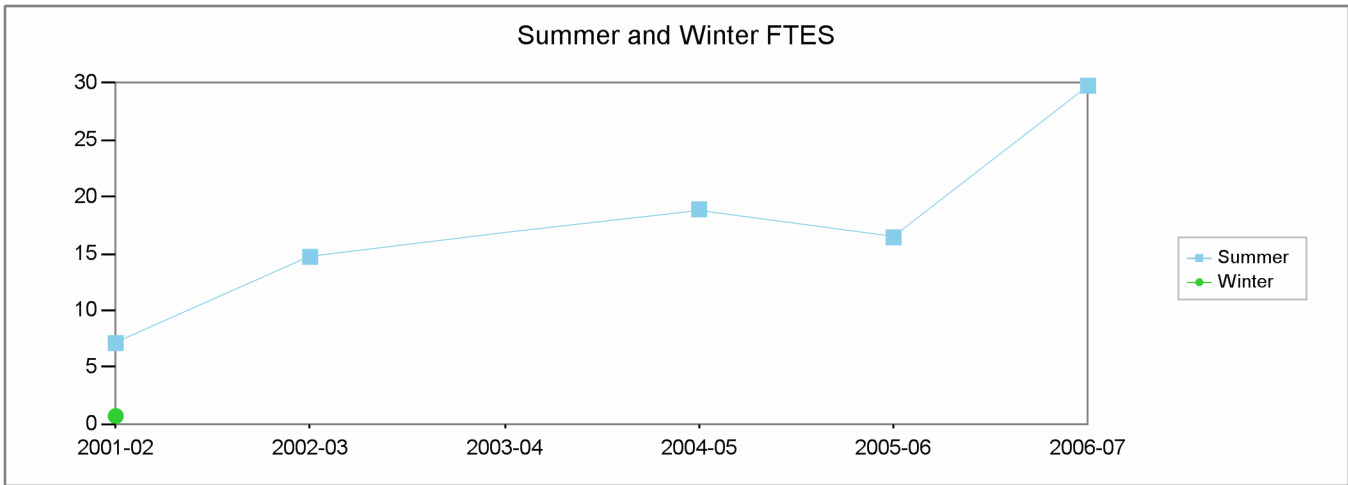
Fall FTES by Discipline



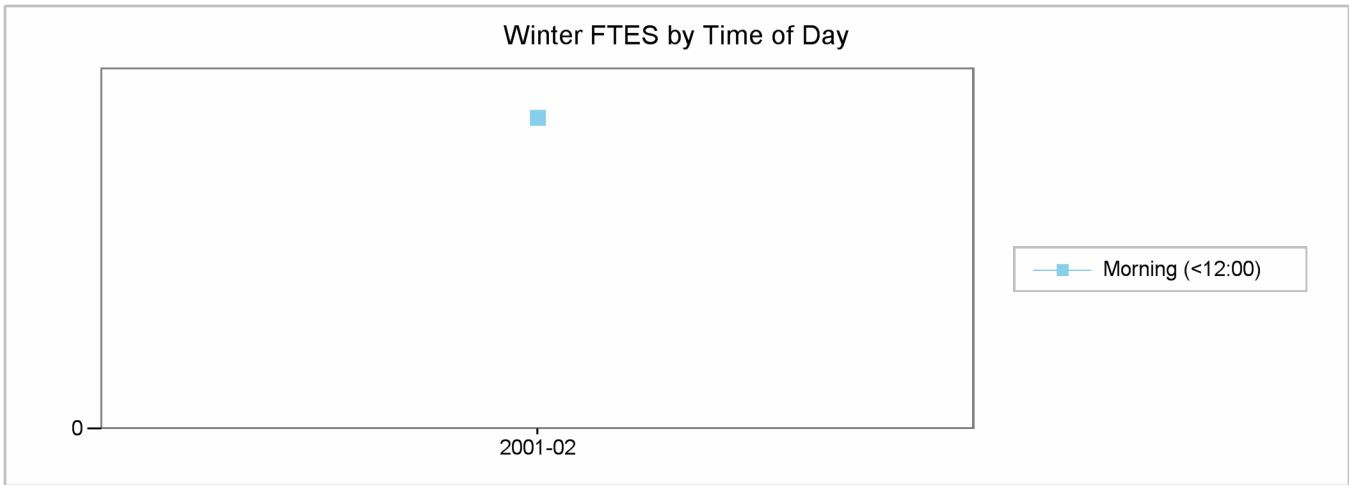
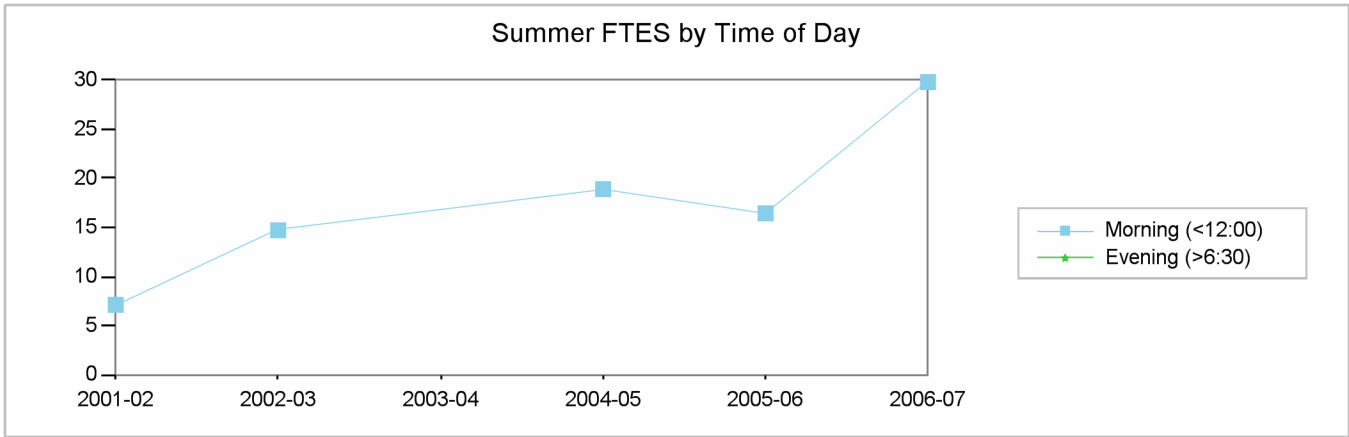
		2001-02	2002-03	2003-04	2004-05	2005-06	2006-07
Fall	Radiologic Technology	42	53	67	62	57	63
Spring	Radiologic Technology	47	66	66	68	65	66

**Los Angeles City College
Comprehensive Program Review 2008**

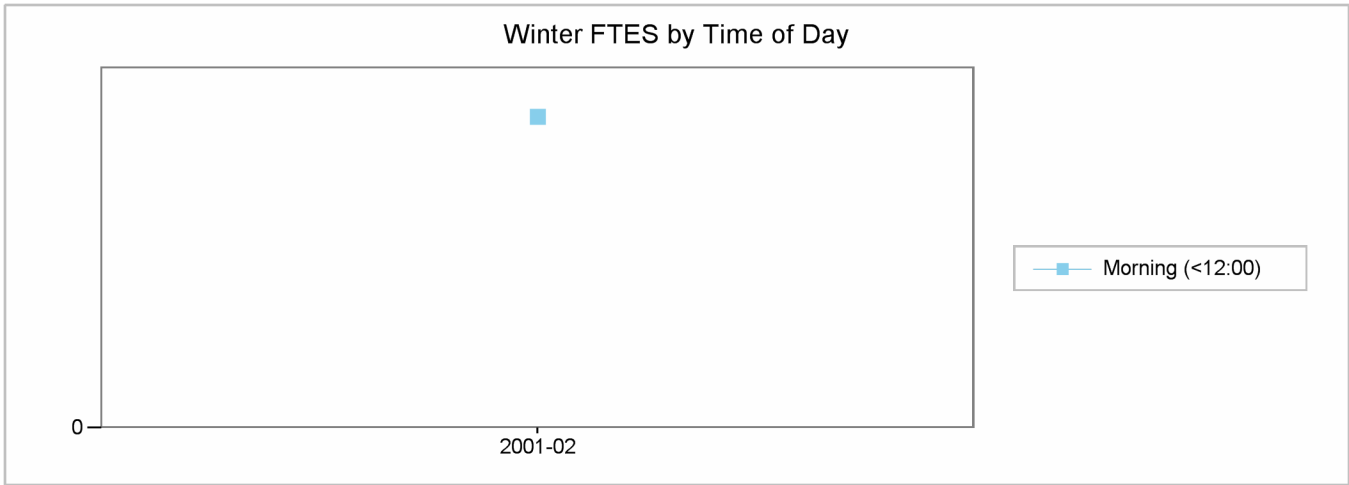
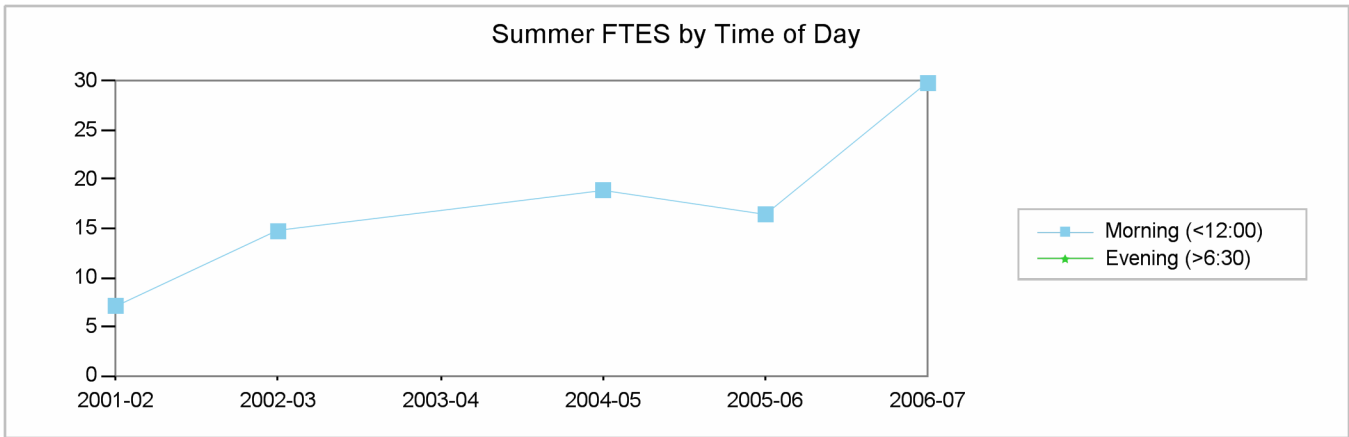
**Radiologic Technology Department
Section IIa. Department Overview – Response to Demand: FTES**



	2001-02	2002-03	2003-04	2004-05	2005-06	2006-07
Summer	7	15		19	16	30
Winter	1					



	Morning (<12:00)	Evening (>6:30)	
	Summer	Winter	Summer
2001-02	7	1	
2002-03	15		
2003-04			
2004-05	19		
2005-06	16		
2006-07	30		

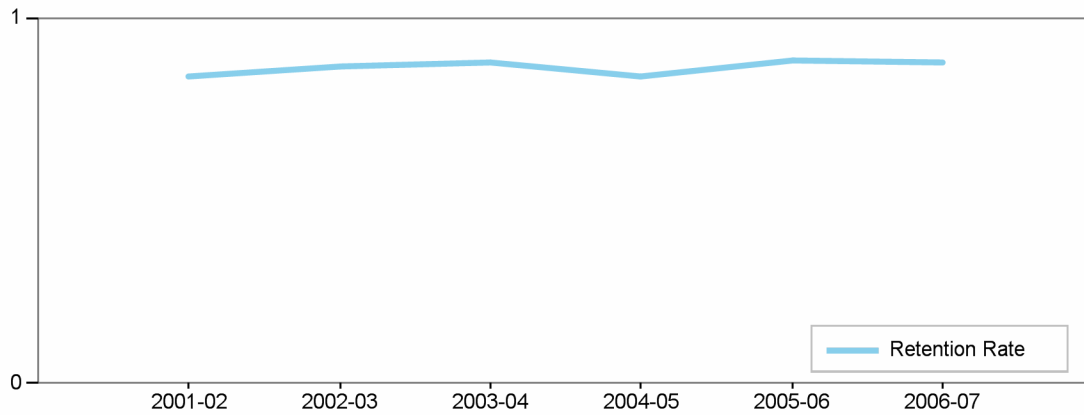


		2001-02	2002-03	2003-04	2004-05	2005-06	2006-07
Summer	Radiologic Technology	7	15		19	16	30
Winter	Radiologic Technology	1					

**Los Angeles City College
Comprehensive Program Review 2008**

**Radiologic Technology Department
Section IIc. Department Overview – Student Achievements**

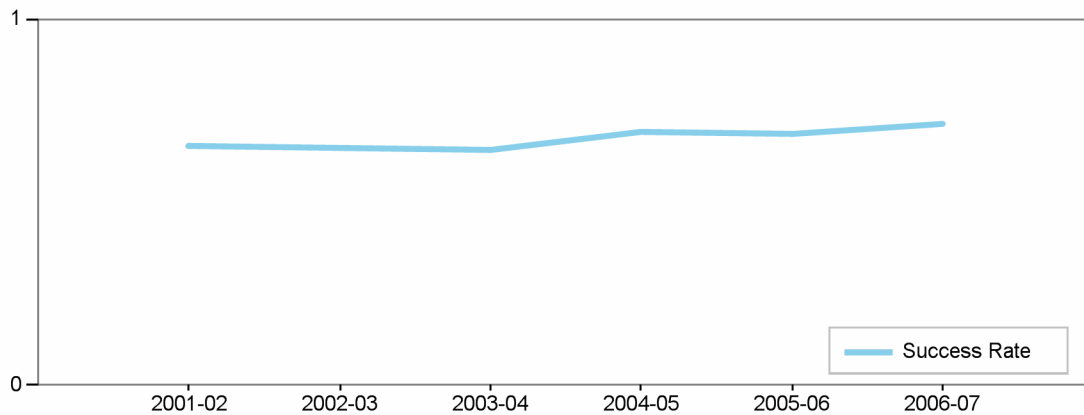
Department's Retention Rate



Retention Rate=
 Numerator: Number of enrollments with A,B,C,D,F,CR,NC,I
 Denominator: Number of enrollments with A,B,C,D,F,CR,NC,W,I

Retention Rate	2001-02	2002-03	2003-04	2004-05	2005-06	2006-07
Radiologic Technology	84 %	87 %	87 %	84 %	88 %	88 %

Department's Success Rate

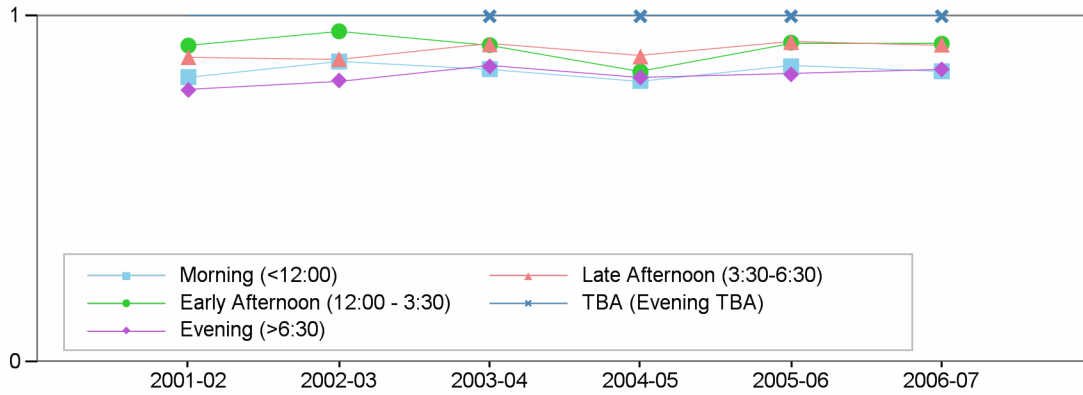


Success Rate =
 Numerator: Number of enrollments with A,B,C,CR
 Denominator: Number of enrollments with A,B,C,D,F,CR,NC,W,I

Success Rate	2001-02	2002-03	2003-04	2004-05	2005-06	2006-07
Radiologic Technology	65 %	65 %	64 %	69 %	69 %	71 %

Department Success and Retention Rates by Time of Day

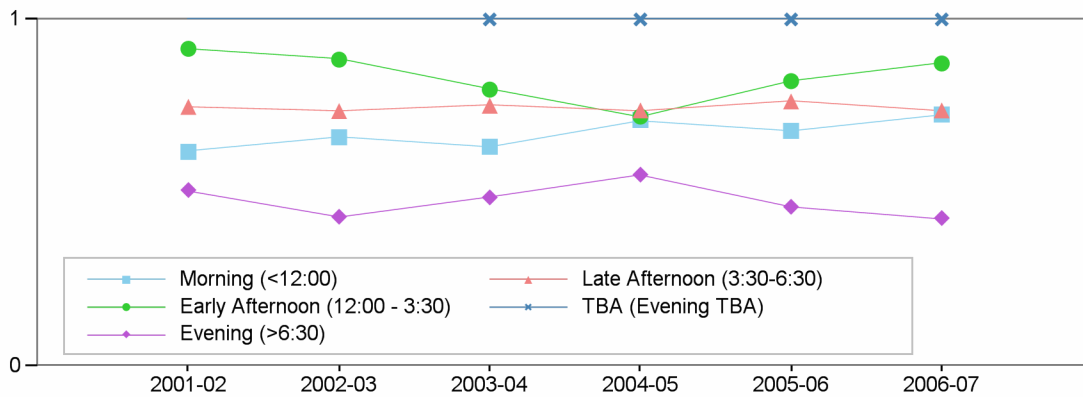
Retention Rate by Time of Day



Retention Rate

	2001-02	2002-03	2003-04	2004-05	2005-06	2006-07
Morning (<12:00)	82 %	87 %	85 %	81 %	86 %	84 %
Early Afternoon (12:00 - 3:30)	92 %	96 %	92 %	84 %	92 %	92 %
Evening (>6:30)	79 %	81 %	86 %	82 %	83 %	85 %
Late Afternoon (3:30-6:30)	88 %	88 %	92 %	88 %	93 %	92 %
TBA (Evening TBA)	NaN	NaN	100 %	100 %	100 %	100 %

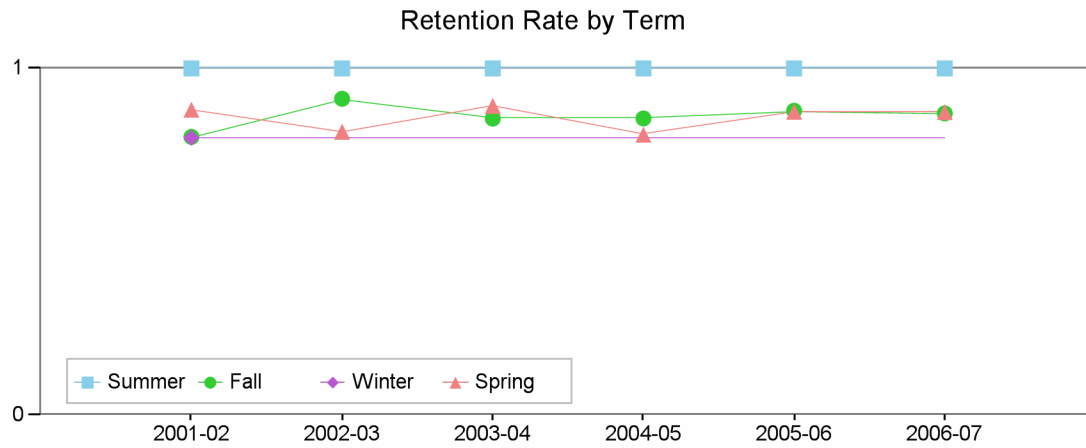
Success Rate by Time of Day



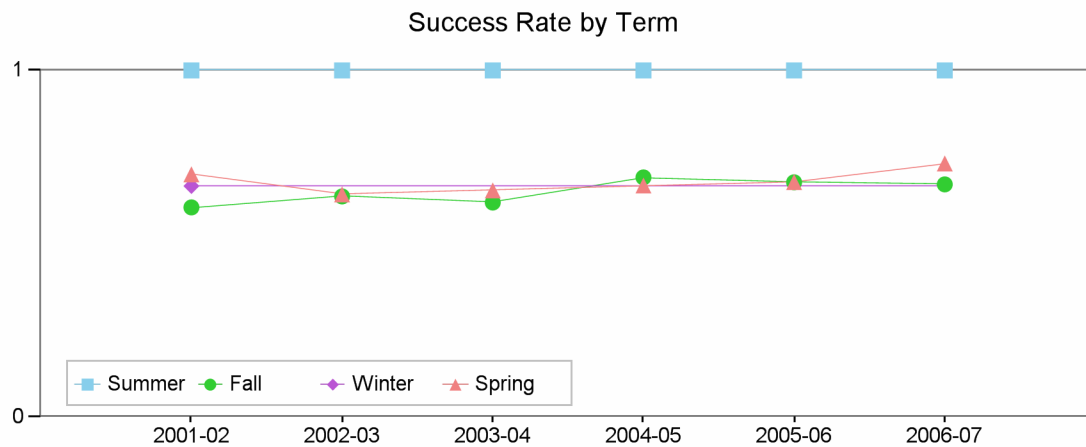
Success Rate

	2001-02	2002-03	2003-04	2004-05	2005-06	2006-07
Morning (<12:00)	62 %	66 %	63 %	71 %	68 %	73 %
Early Afternoon (12:00 - 3:30)	92 %	88 %	80 %	72 %	82 %	87 %
Evening (>6:30)	51 %	43 %	49 %	55 %	46 %	43 %
Late Afternoon (3:30-6:30)	75 %	74 %	75 %	74 %	76 %	74 %
TBA (Evening TBA)	NaN	NaN	100 %	100 %	100 %	100 %

Department Success and Retention Rates by Term



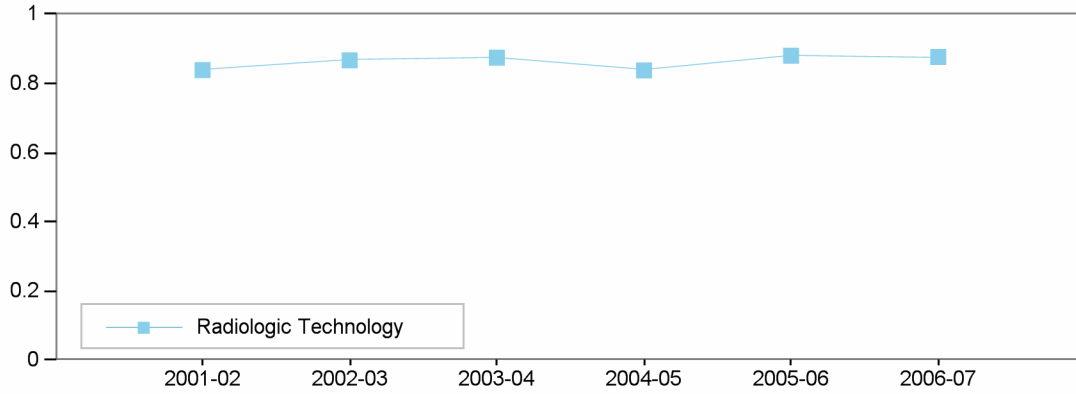
Retention Rate	2001-02	2002-03	2003-04	2004-05	2005-06	2006-07
Summer	100 %	100 %	100 %	100 %	100 %	100 %
Fall	80 %	91 %	86 %	86 %	88 %	87 %
Winter	80 %	NaN	NaN	NaN	NaN	NaN
Spring	88 %	82 %	89 %	81 %	88 %	87 %



Success Rate	2001-02	2002-03	2003-04	2004-05	2005-06	2006-07
Summer	100 %	100 %	100 %	100 %	100 %	100 %
Fall	61 %	64 %	62 %	69 %	68 %	67 %
Winter	67 %	NaN	NaN	NaN	NaN	NaN
Spring	70 %	64 %	65 %	67 %	68 %	73 %

Department Success and Retention Rates by Discipline

Retention Rate by Discipline

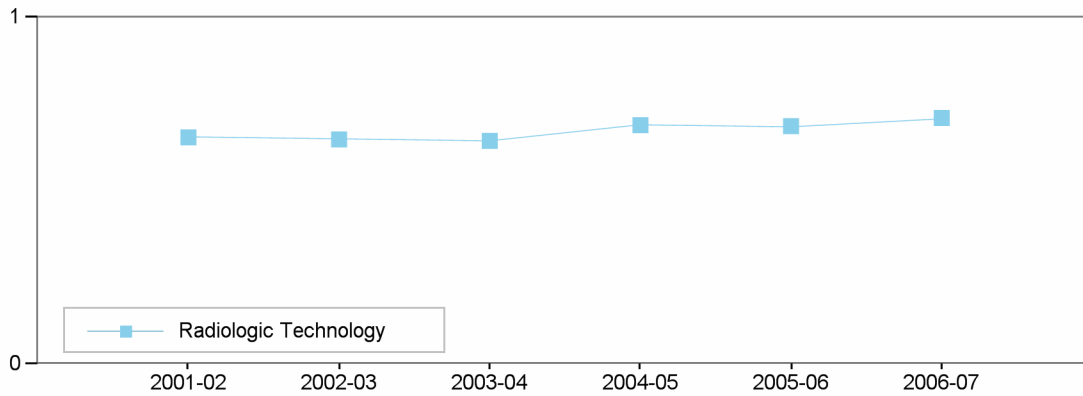


Retention Rate

Radiologic
Technology

	2001-02	2002-03	2003-04	2004-05	2005-06	2006-07
	84 %	87 %	87 %	84 %	88 %	88 %

Success Rate by Discipline



Success Rate

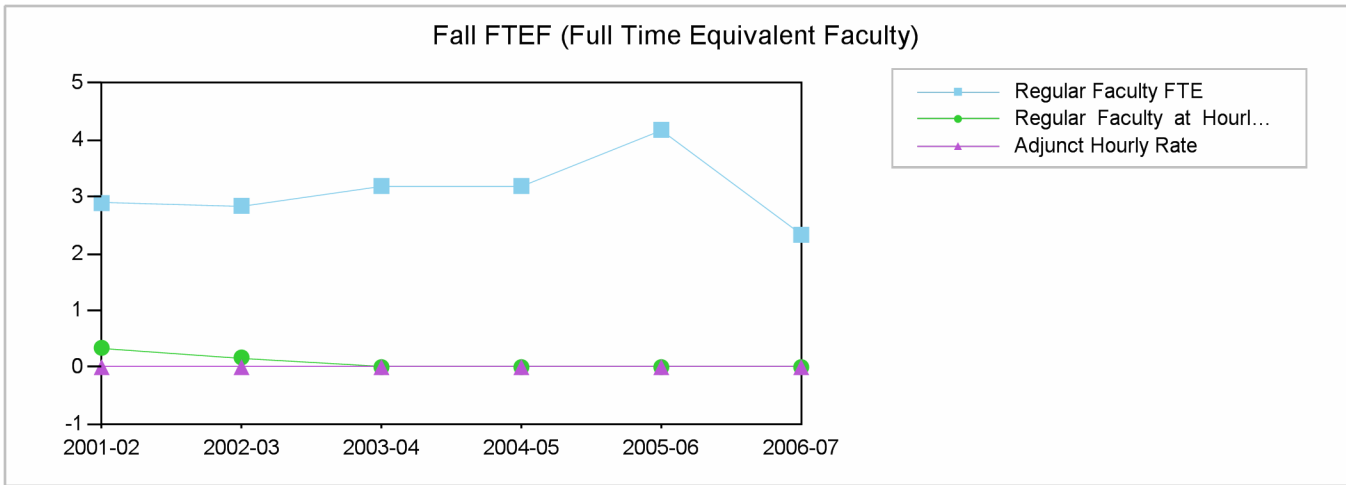
Radiologic
Technology

	2001-02	2002-03	2003-04	2004-05	2005-06	2006-07
	65 %	65 %	64 %	69 %	69 %	71 %

**Los Angeles City College
Comprehensive Program Review 2008**

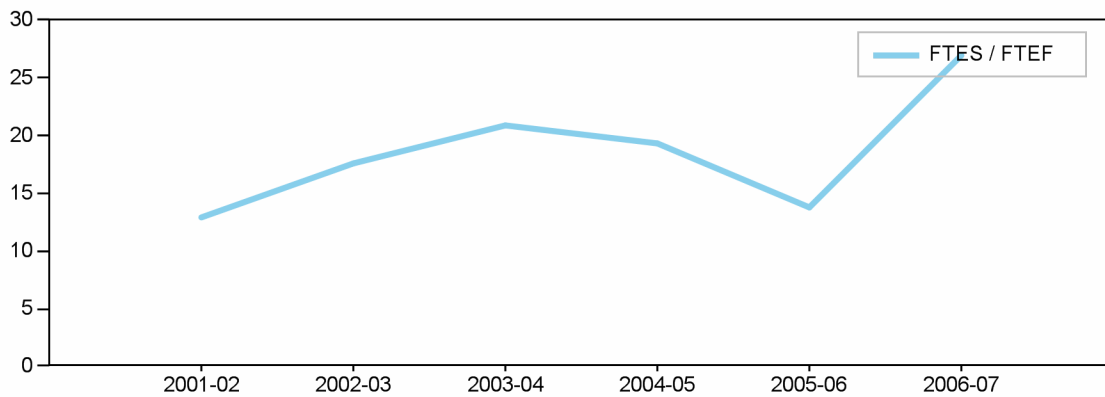
Radiologic Technology Department

Section IId. Department Overview – FTEF



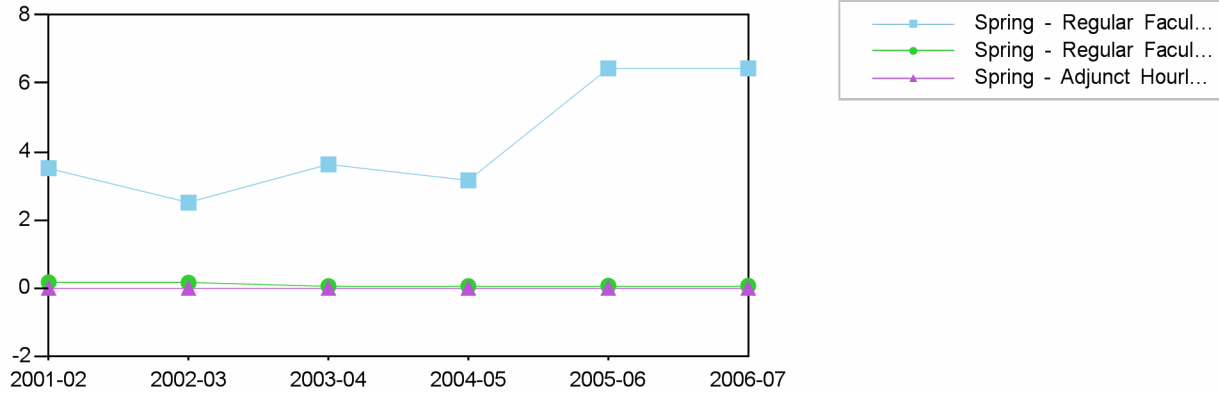
Fall	2001-02	2002-03	2003-04	2004-05	2005-06	2006-07
Regular Faculty FTE	2.89	2.84	3.19	3.19	4.18	2.33
Regular Faculty at Hourly Rate	0.34	0.17	0	0	0	0
Adjunct Hourly Rate	0	0	0	0	0	0
Total	3.23	3.01	3.19	3.19	4.18	2.33

Fall FTES / FTEF Ratio



Fall	2001-02	2002-03	2003-04	2004-05	2005-06	2006-07
Total FTEF	3.23	3.01	3.19	3.19	4.18	2.33
Total FTES	41.5	52.84	66.74	61.77	57.32	62.97
FTES / FTEF	12.8	17.6	20.9	19.4	13.7	27.0

Spring FTEF (Full Time Equivalent Faculty)

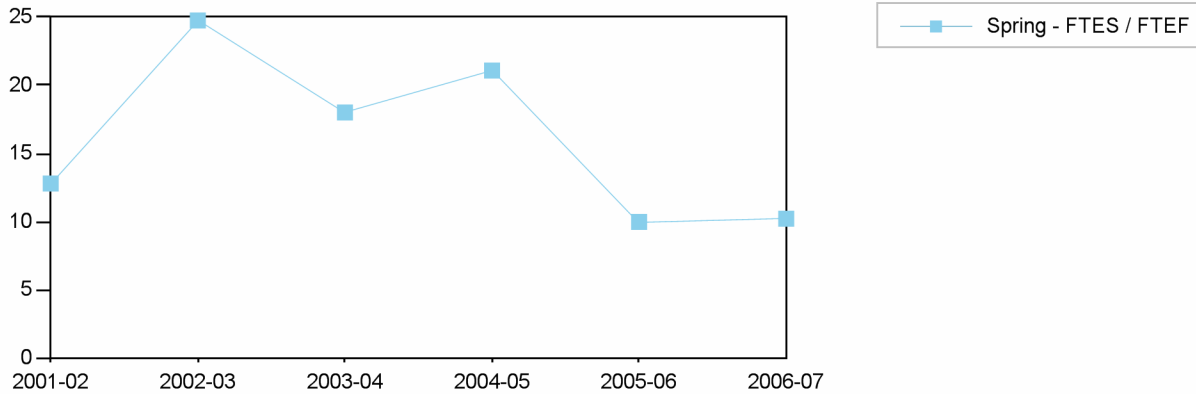


Spring

2001-02 2002-03 2003-04 2004-05 2005-06 2006-07

	Spring	Spring	Spring	Spring	Spring	Spring
Regular Faculty FTE	3.51	2.5	3.62	3.15	6.44	6.44
Regular Faculty at Hourly Rate	0.16	0.15	0.05	0.05	0.06	0.06
Adjunct Hourly Rate	0	0	0	0	0	0
Total	3.67	2.65	3.67	3.2	6.5	6.5

Spring FTES / FTEF Ratio

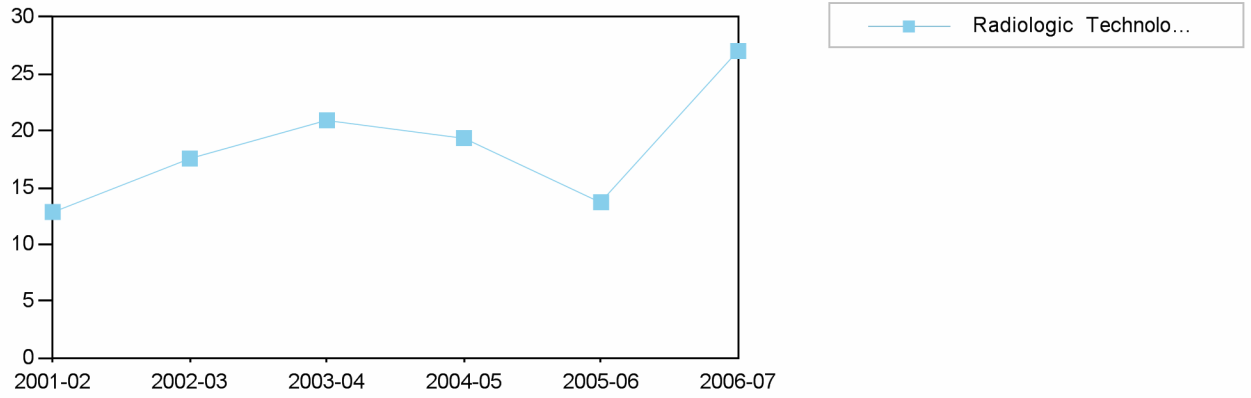


Spring

2001-02 2002-03 2003-04 2004-05 2005-06 2006-07

	Spring	Spring	Spring	Spring	Spring	Spring
Total FTEF	3.67	2.65	3.67	3.2	6.5	6.5
Total FTES	46.98	65.62	66.09	67.5	64.84	66.35
FTES / FTEF	12.8	24.8	18.0	21.1	10.0	10.2

Fall FTES / FTEF Ratio by Discipline



2001-02 2002-03 2003-04 2004-05 2005-06 2006-07

**Radiologic
Technology**

Total FTEF	3.23	3.01	3.19	3.19	4.18	2.33
Total FTES	41.5	52.84	66.74	61.77	57.32	62.97
FTES / FTEF	12.8	17.6	20.9	19.4	13.7	27.0