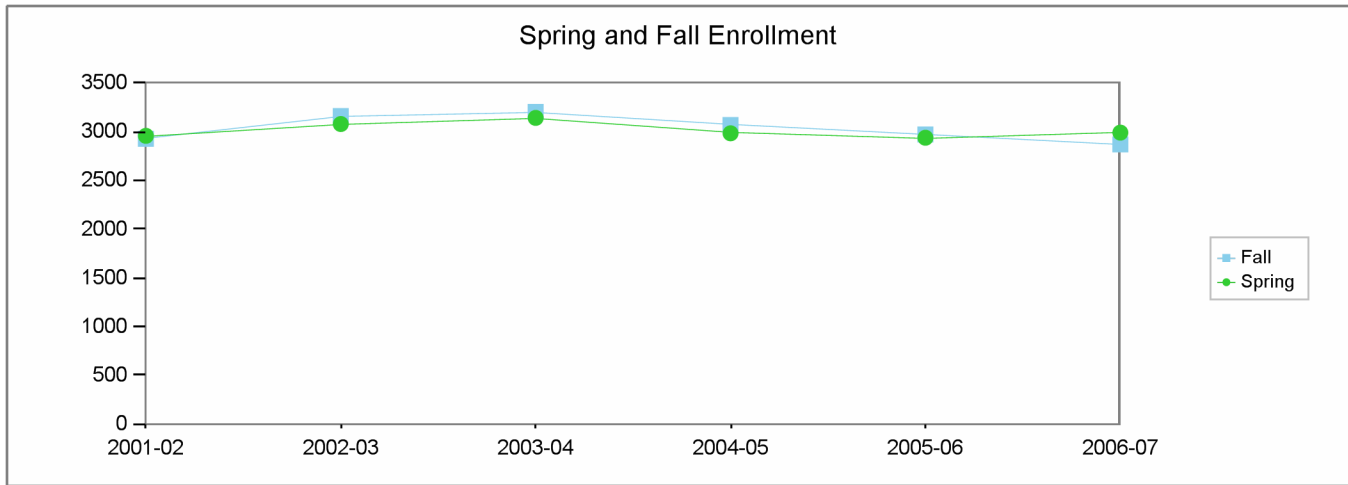


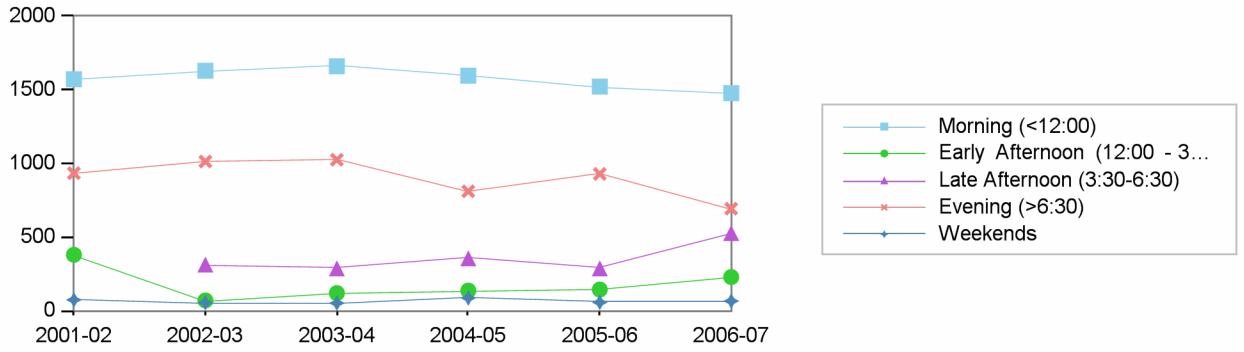
**Los Angeles City College
Comprehensive Program Review 2008**

**Social Science Department
Section IIa. Department Overview – Response to Demand: Enrollment**

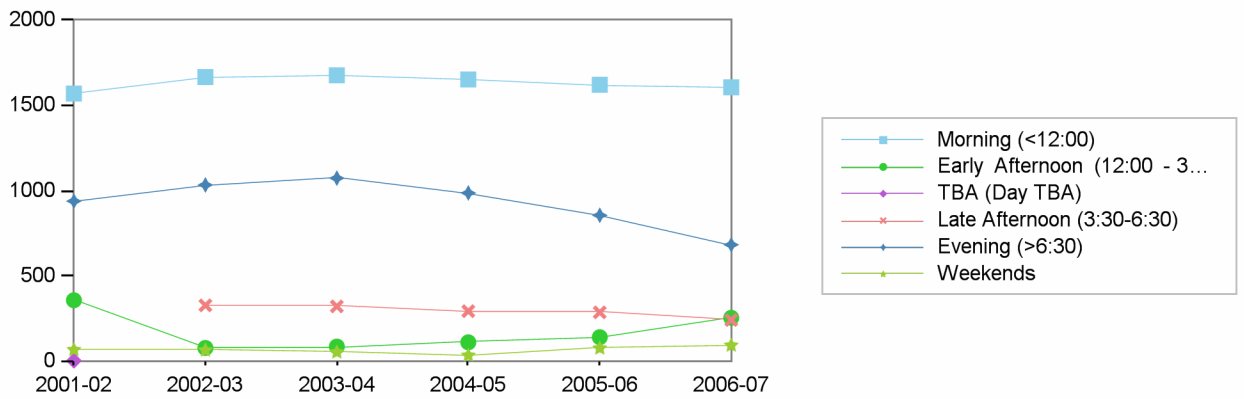


	2001-02	2002-03	2003-04	2004-05	2005-06	2006-07
Fall	2930	3163	3205	3071	2974	2872
Spring	2960	3081	3144	2986	2940	2993

Spring Enrollment by Time of Day



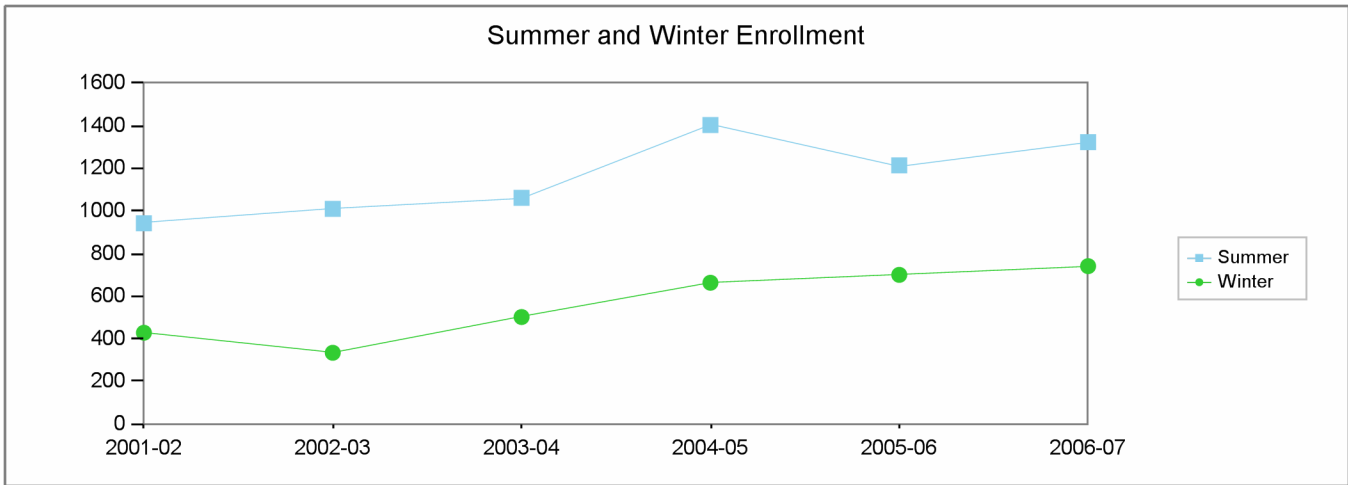
Fall Enrollment by Time of Day



	Morning (<12:00)		Early Afternoon (12:00 - 3:30)		TBA (Day TBA)	Late Afternoon (3:30-6:30)		Evening (>6:30)		Weekends	
	Fall	Spring	Fall	Spring	Fall	Fall	Spring	Fall	Spring	Fall	Spring
2001-02	1570	1572	356	380	1			938	934	65	74
2002-03	1666	1629	76	70		326	314	1033	1013	62	55
2003-04	1677	1659	84	120		320	288	1073	1025	51	52
2004-05	1652	1595	109	137		292	356	986	811	32	87
2005-06	1621	1522	139	144		285	288	855	929	74	57
2006-07	1606	1477	253	229		240	528	682	693	91	66

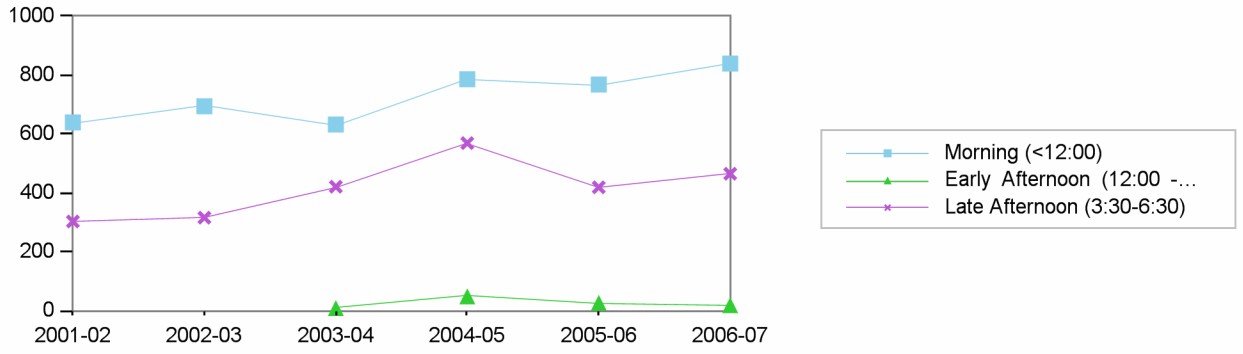
**Los Angeles City College
Comprehensive Program Review 2008**

**Social Science Department
Section IIa. Department Overview – Response to Demand: Enrollment**

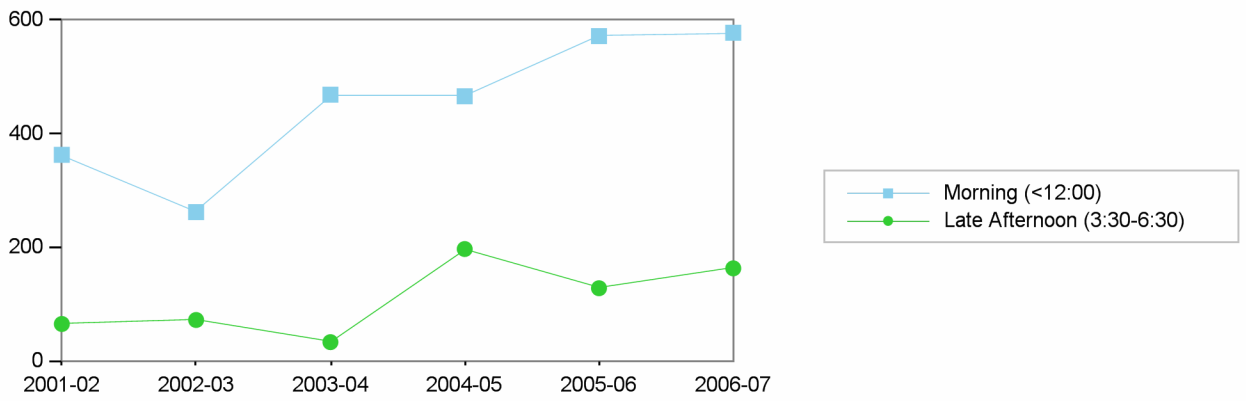


	2001-02	2002-03	2003-04	2004-05	2005-06	2006-07
Summer	942	1010	1062	1404	1214	1323
Winter	428	334	502	663	700	741

Summer Enrollment by Time of Day



Winter Enrollment by Time of Day



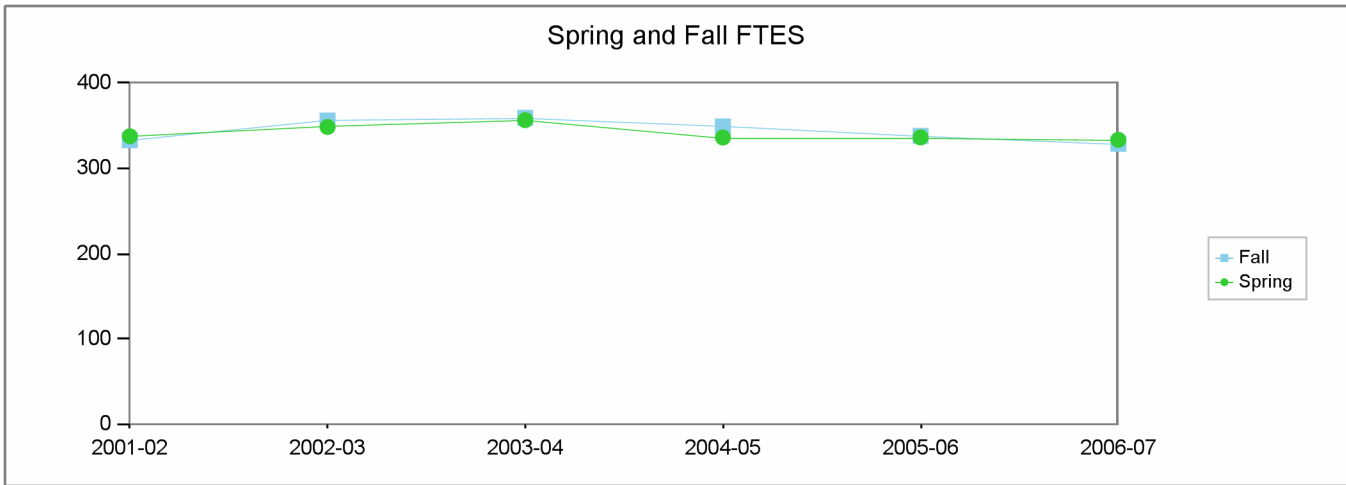
Morning (<12:00) Early Afternoon (12:00 - 3:30) Late Afternoon (3:30-6:30)

Summer Winter Summer Summer Winter

2001-02	639	363		303	65
2002-03	694	262		316	72
2003-04	632	469	9	421	33
2004-05	786	466	49	569	197
2005-06	768	572	27	419	128
2006-07	839	578	19	465	163

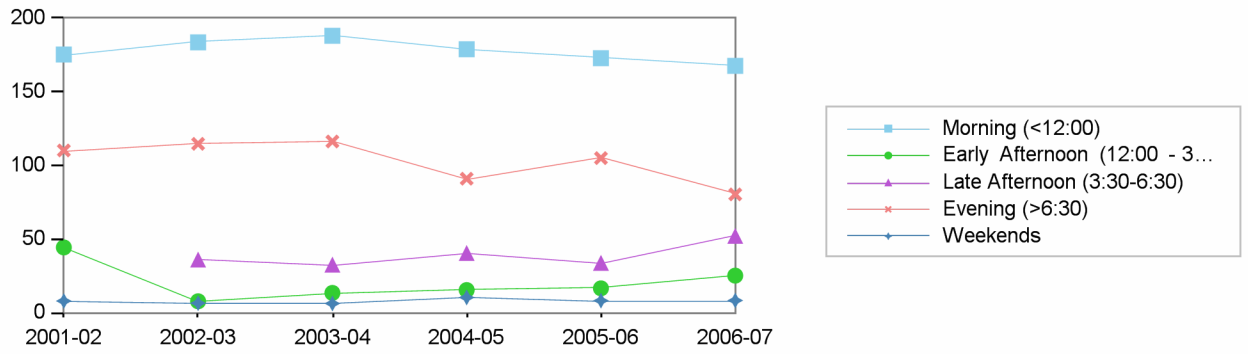
**Los Angeles City College
Comprehensive Program Review 2008**

**Social Science Department
Section IIa. Department Overview – Response to Demand: FTES**

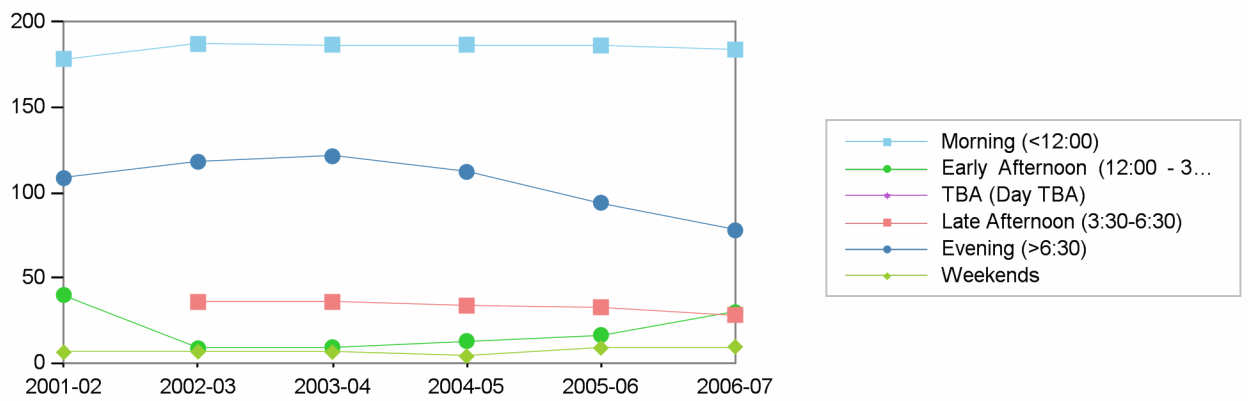


	2001-02	2002-03	2003-04	2004-05	2005-06	2006-07
Fall	333	356	359	349	338	329
Spring	338	349	357	336	336	334

Spring FTES by Time of Day

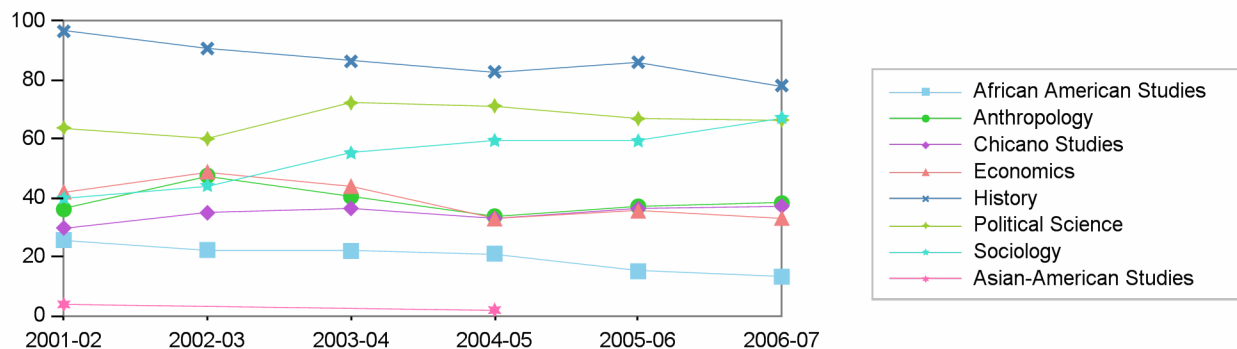


Fall FTES by Time of Day

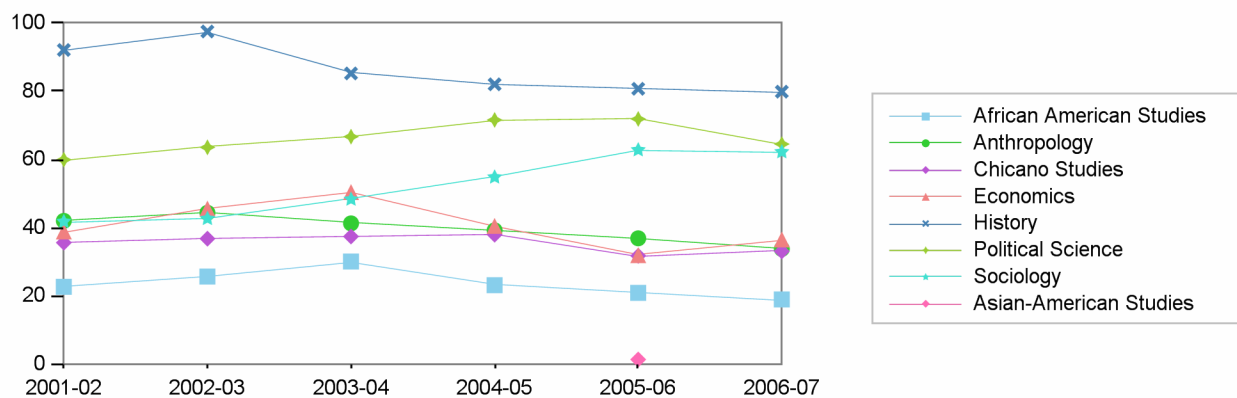


	Morning (<12:00)		Early Afternoon (12:00 - 3:30)		TBA (Day TBA)	Late Afternoon (3:30-6:30)		Evening (>6:30)		Weekends	
	Fall	Spring	Fall	Spring		Fall	Spring	Fall	Spring	Fall	Spring
2001-02	178	175	40	44				108	110	6	8
2002-03	187	184	9	8		36	36	118	115	7	7
2003-04	187	188	9	13		36	33	121	116	6	6
2004-05	187	179	13	15		34	41	112	91	4	10
2005-06	186	173	16	17		33	34	94	105	9	8
2006-07	184	168	30	25		28	52	78	80	9	8

Spring FTES by Discipline



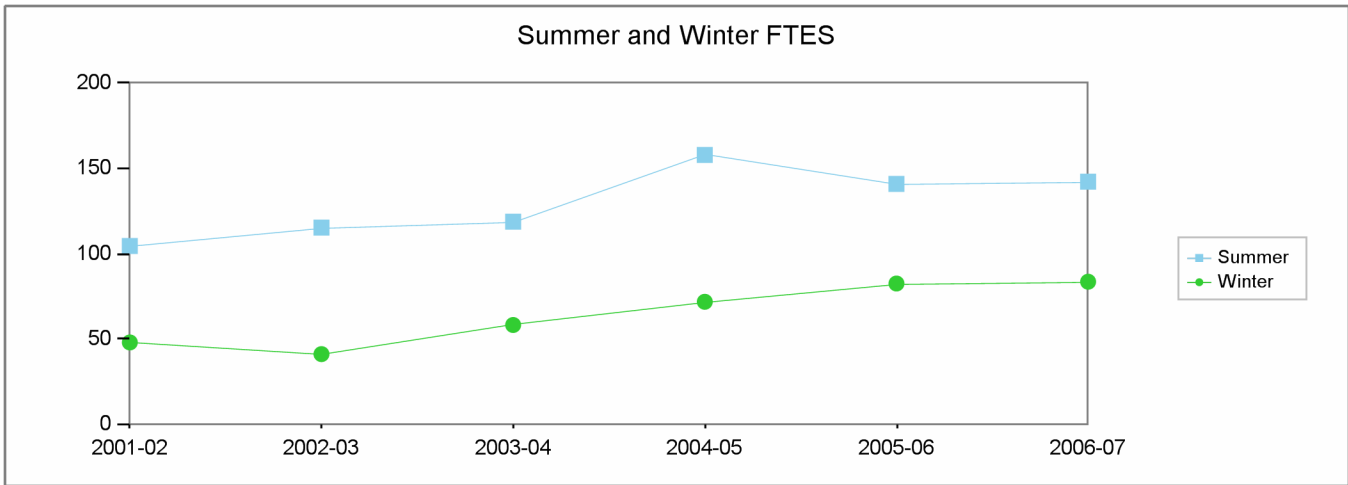
Fall FTES by Discipline



		2001-02	2002-03	2003-04	2004-05	2005-06	2006-07
Fall	African American Studies	23	26	30	23	21	19
	Anthropology	42	44	41	39	37	34
	Chicano Studies	36	37	37	38	32	33
	Economics	39	46	50	41	32	37
	History	92	98	85	82	81	80
	Political Science	60	64	67	72	72	65
	Sociology	42	43	48	55	63	62
	Asian-American Studies					1	
Spring	African American Studies	26	22	22	21	15	13
	Anthropology	36	48	40	34	37	38
	Chicano Studies	30	35	36	33	36	37
	Economics	42	49	44	33	36	33
	History	97	91	86	83	86	78
	Political Science	64	60	72	71	67	66
	Sociology	40	44	55	59	59	67
	Asian-American Studies	4			2		

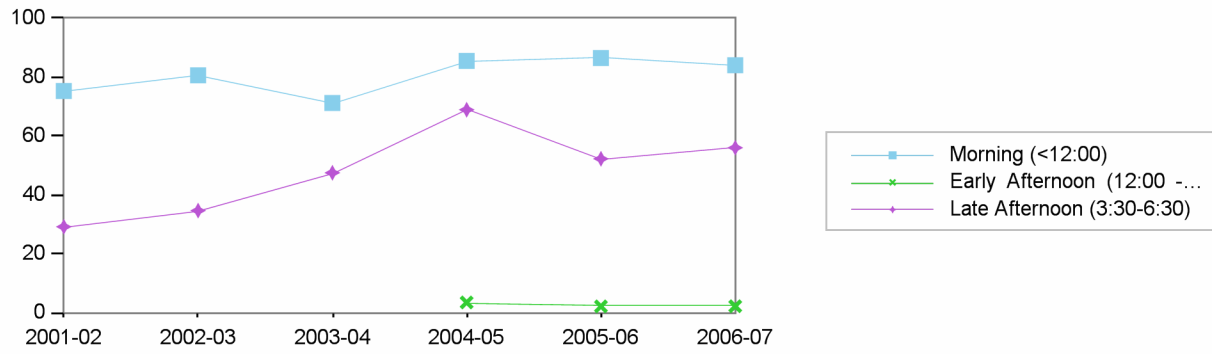
**Los Angeles City College
Comprehensive Program Review 2008**

**Social Science Department
Section IIa. Department Overview – Response to Demand: FTES**

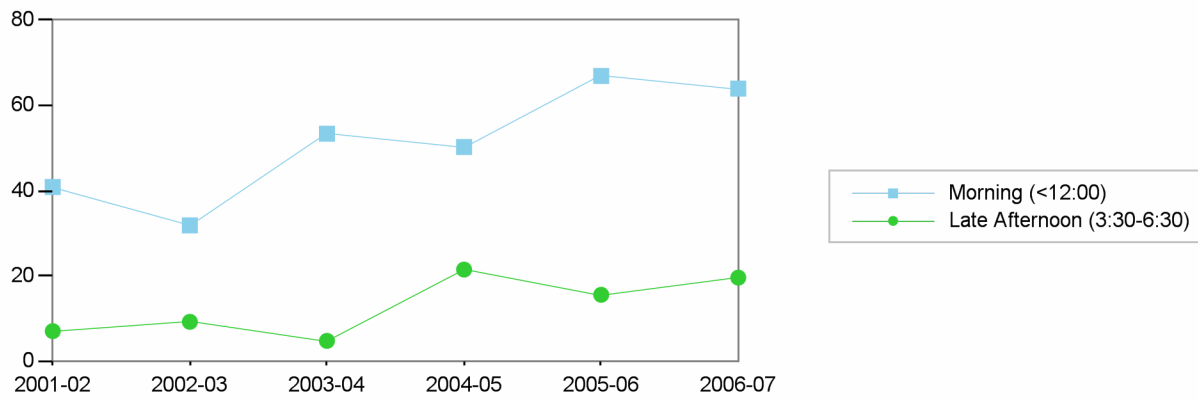


	2001-02	2002-03	2003-04	2004-05	2005-06	2006-07
Summer	104	115	119	158	141	142
Winter	48	41	58	72	82	83

Summer FTES by Time of Day



Winter FTES by Time of Day

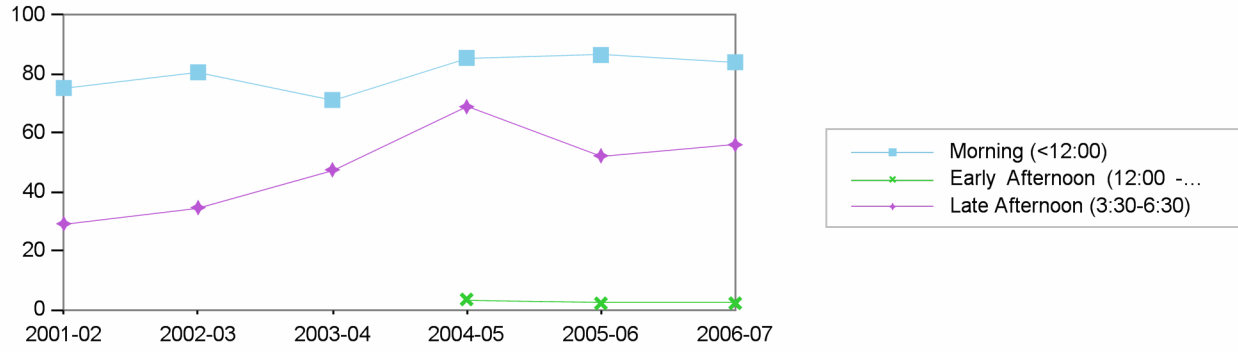


Morning (<12:00) Early Afternoon (12:00 - 3:30) Late Afternoon (3:30-6:30)

Summer Winter Summer Summer Winter

2001-02	75	41		29	7
2002-03	81	32		35	9
2003-04	71	53		48	5
2004-05	85	50	4	69	21
2005-06	86	67	2	52	16
2006-07	84	64	2	56	20

Summer FTES by Time of Day



Winter FTES by Time of Day

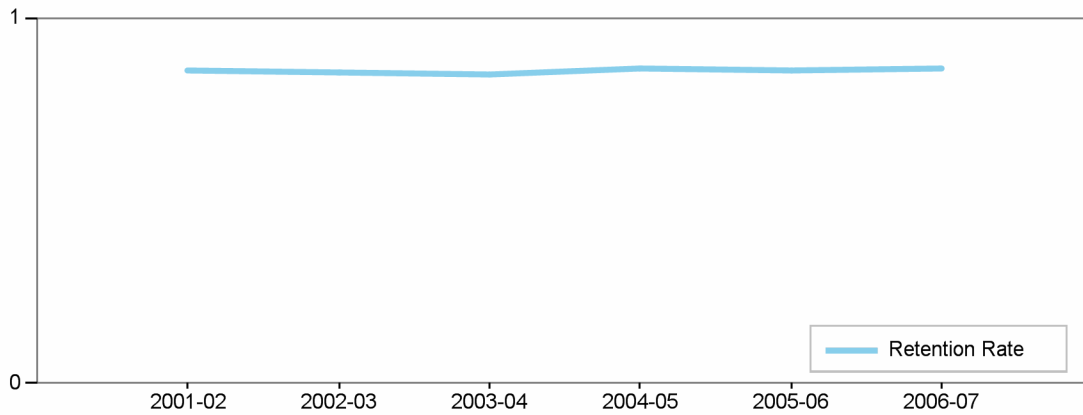


		2001-02	2002-03	2003-04	2004-05	2005-06	2006-07
Summer	African American Studies	8	8	5	9	7	7
	Anthropology	11	12	11	29	18	16
	Chicano Studies	12	11	8	10	7	7
	History	18	21	30	28	31	34
	Political Science	28	39	28	36	36	33
	Economics	12	10	19	27	20	20
	Sociology	15	14	19	19	23	25
Winter	Chicano Studies	6	6	7	8	4	7
	Economics	8	5	4	7	7	8
	History	8	5	16	21	23	22
	Political Science	10	5	10	14	19	21
	Sociology	6	4	5	11	16	13
	African American Studies	3	6	7	3	3	1
	Anthropology	7	9	10	8	10	10

Los Angeles City College
Comprehensive Program Review 2008

Social Science Department
Section IIc. Department Overview – Student Achievements

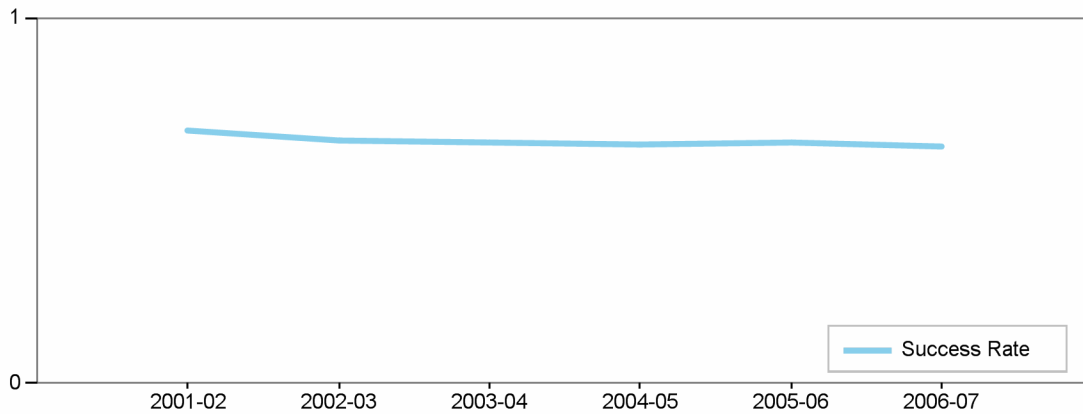
Department's Retention Rate



Retention Rate=
 Numerator: Number of enrollments with A,B,C,D,F,CR,NC,I
 Denominator: Number of enrollments with A,B,C,D,F,CR,NC,W,I

Retention Rate	2001-02	2002-03	2003-04	2004-05	2005-06	2006-07
Social Science	85 %	85 %	84 %	86 %	85 %	86 %

Department's Success Rate

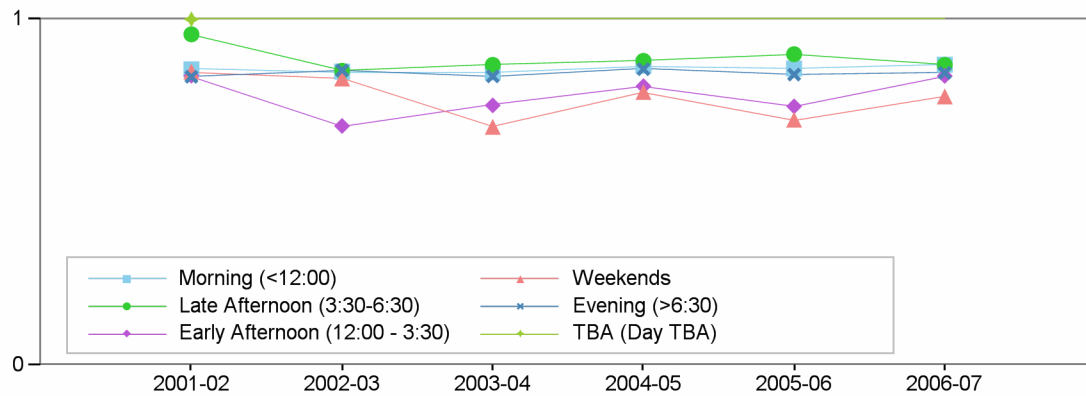


Success Rate =
 Numerator: Number of enrollments with A,B,C,CR
 Denominator: Number of enrollments with A,B,C,D,F,CR,NC,W,I

Success Rate	2001-02	2002-03	2003-04	2004-05	2005-06	2006-07
Social Science	69 %	66 %	66 %	65 %	66 %	65 %

Department Success and Retention Rates by Time of Day

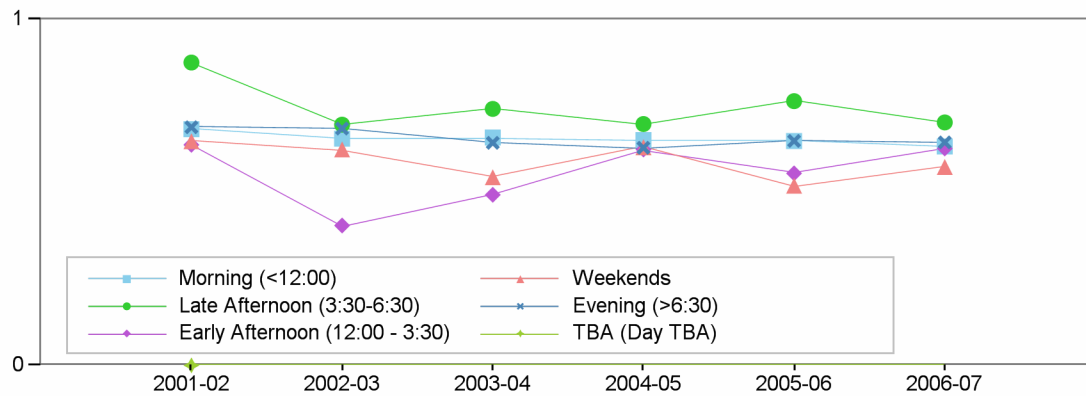
Retention Rate by Time of Day



Retention Rate

	2001-02	2002-03	2003-04	2004-05	2005-06	2006-07
Morning (<12:00)	86 %	85 %	85 %	87 %	86 %	87 %
Late Afternoon (3:30-6:30)	96 %	85 %	87 %	88 %	90 %	87 %
Early Afternoon (12:00 - 3:30)	84 %	69 %	75 %	81 %	75 %	84 %
Weekends	85 %	83 %	69 %	79 %	71 %	78 %
Evening (>6:30)	83 %	85 %	84 %	86 %	84 %	85 %
TBA (Day TBA)	100 %	NaN	NaN	NaN	NaN	NaN

Success Rate by Time of Day

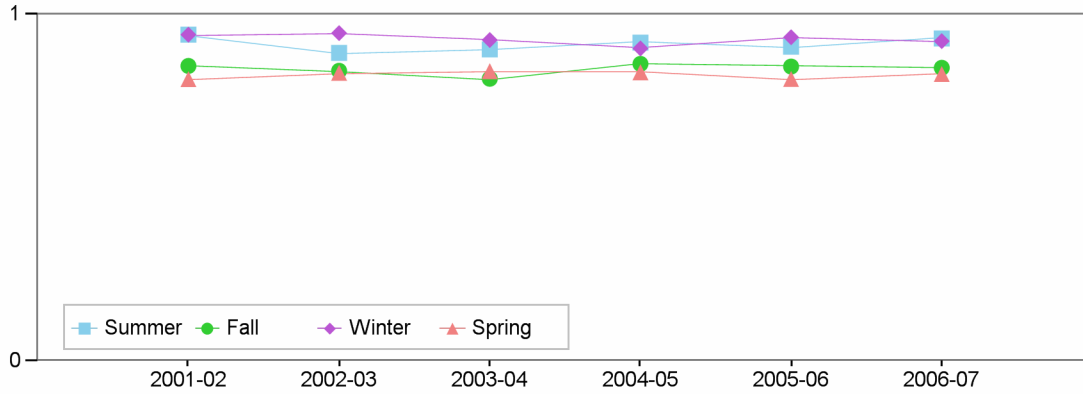


Success Rate

	2001-02	2002-03	2003-04	2004-05	2005-06	2006-07
Morning (<12:00)	68 %	66 %	66 %	65 %	65 %	63 %
Late Afternoon (3:30-6:30)	88 %	70 %	74 %	70 %	76 %	70 %
Early Afternoon (12:00 - 3:30)	64 %	40 %	49 %	62 %	55 %	63 %
Weekends	65 %	62 %	54 %	63 %	52 %	57 %
Evening (>6:30)	69 %	68 %	64 %	63 %	65 %	64 %
TBA (Day TBA)	0 %	NaN	NaN	NaN	NaN	NaN

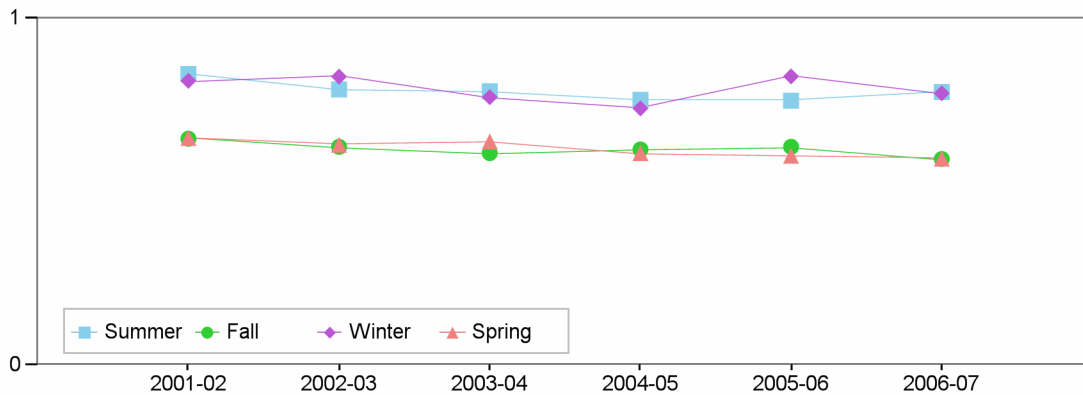
Department Success and Retention Rates by Term

Retention Rate by Term



Retention Rate	2001-02	2002-03	2003-04	2004-05	2005-06	2006-07
Summer	94 %	89 %	90 %	92 %	91 %	93 %
Fall	85 %	84 %	81 %	86 %	85 %	85 %
Winter	94 %	95 %	93 %	90 %	93 %	92 %
Spring	81 %	83 %	84 %	83 %	81 %	83 %

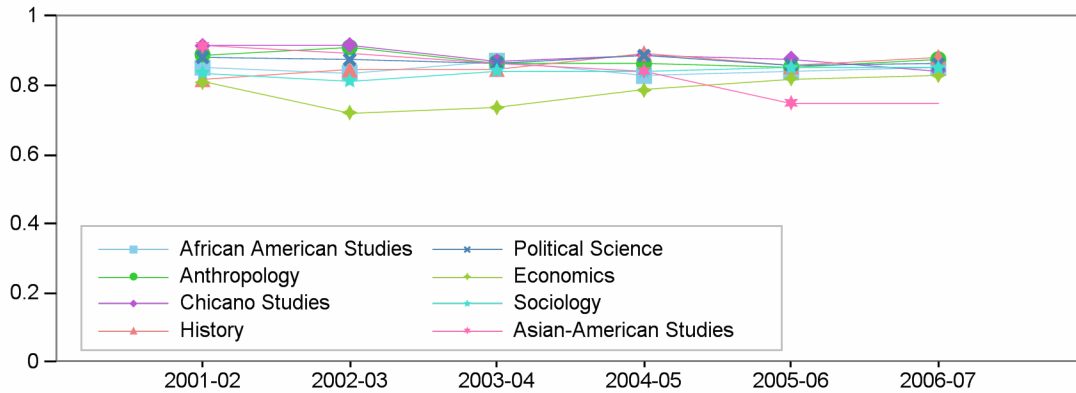
Success Rate by Term



Success Rate	2001-02	2002-03	2003-04	2004-05	2005-06	2006-07
Summer	84 %	80 %	79 %	76 %	76 %	79 %
Fall	65 %	63 %	61 %	62 %	63 %	59 %
Winter	82 %	83 %	77 %	74 %	83 %	78 %
Spring	66 %	64 %	65 %	61 %	60 %	60 %

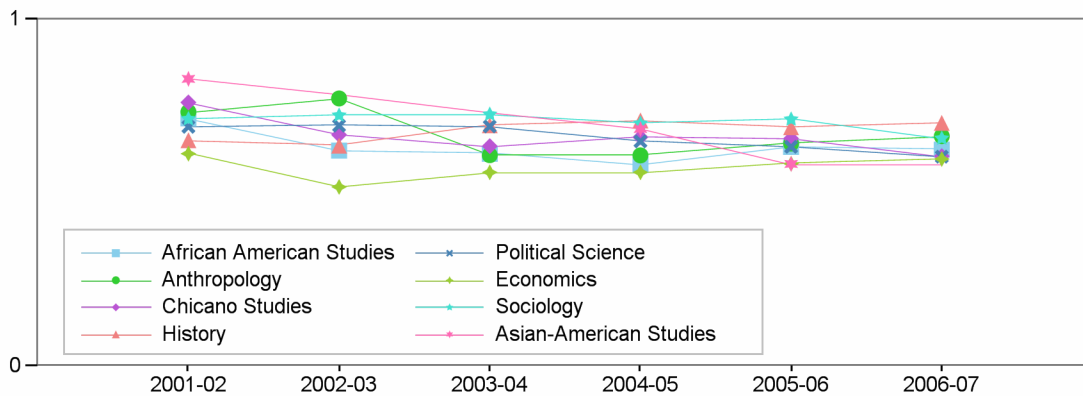
Department Success and Retention Rates by Discipline

Retention Rate by Discipline



Retention Rate	2001-02	2002-03	2003-04	2004-05	2005-06	2006-07
African American Studies	85 %	84 %	87 %	83 %	84 %	85 %
Anthropology	89 %	91 %	87 %	86 %	85 %	88 %
Chicano Studies	91 %	92 %	87 %	89 %	88 %	84 %
History	82 %	85 %	85 %	89 %	86 %	88 %
Political Science	88 %	87 %	87 %	89 %	86 %	86 %
Economics	81 %	72 %	74 %	79 %	82 %	83 %
Sociology	84 %	81 %	84 %	84 %	85 %	85 %
Asian-American Studies	91 %	NaN	NaN	84 %	75 %	NaN

Success Rate by Discipline

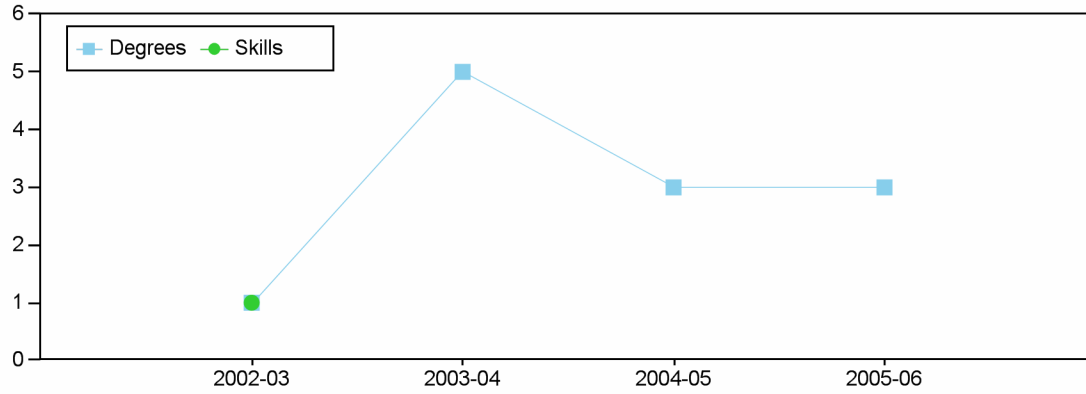


Success Rate	2001-02	2002-03	2003-04	2004-05	2005-06	2006-07
African American Studies	71 %	62 %	61 %	58 %	63 %	62 %
Anthropology	73 %	77 %	61 %	61 %	64 %	66 %
Chicano Studies	76 %	67 %	63 %	66 %	66 %	61 %
History	65 %	64 %	69 %	71 %	69 %	70 %
Political Science	69 %	69 %	69 %	65 %	63 %	60 %

Success Rate	2001-02	2002-03	2003-04	2004-05	2005-06	2006-07
Economics	61 %	52 %	56 %	56 %	58 %	60 %
Sociology	71 %	72 %	73 %	70 %	71 %	66 %
Asian-American Studies	83 %	NaN	NaN	68 %	58 %	NaN

Los Angeles City College
Comprehensive Program Review 2008
Social Science Department
Section IIc. Department Overview – Student Achievements

Department's Degrees and Certificates



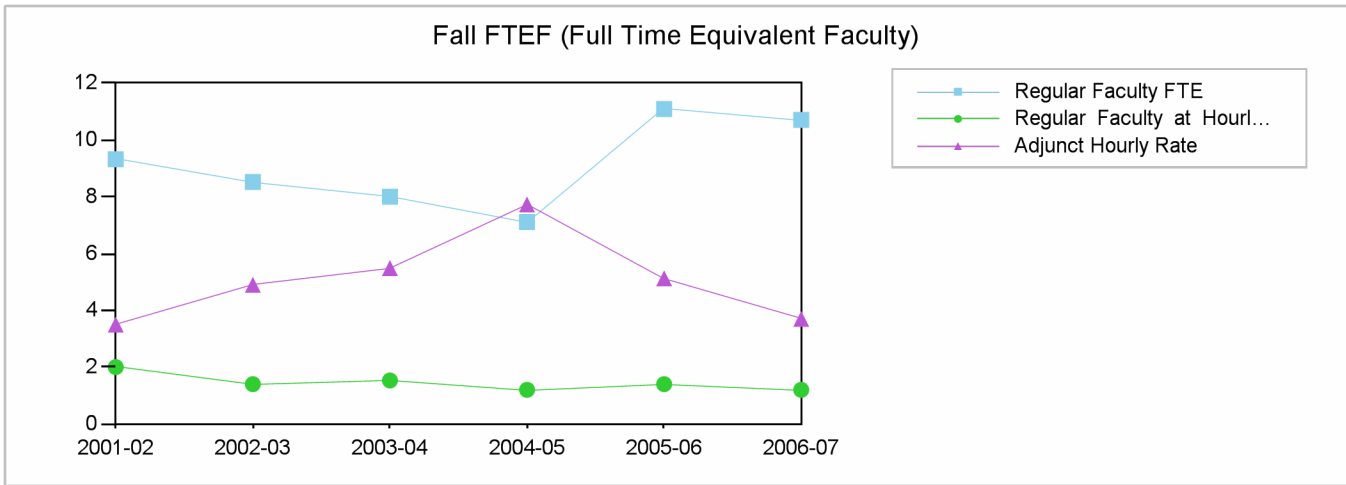
	2002-03	2003-04	2004-05	2005-06
Degrees	1	5	3	3
Skills	1			
Total	2	5	3	3

Department's Awards by Program

		2002-03	2003-04	2004-05	2005-06
Degrees	Chicano Studies		1		
	Latin American Studies		1	1	
	Modern Political Studies	1	3	2	3
	Total	1	5	3	3
Skills	Modern Political Studies	1			
	Total	1			

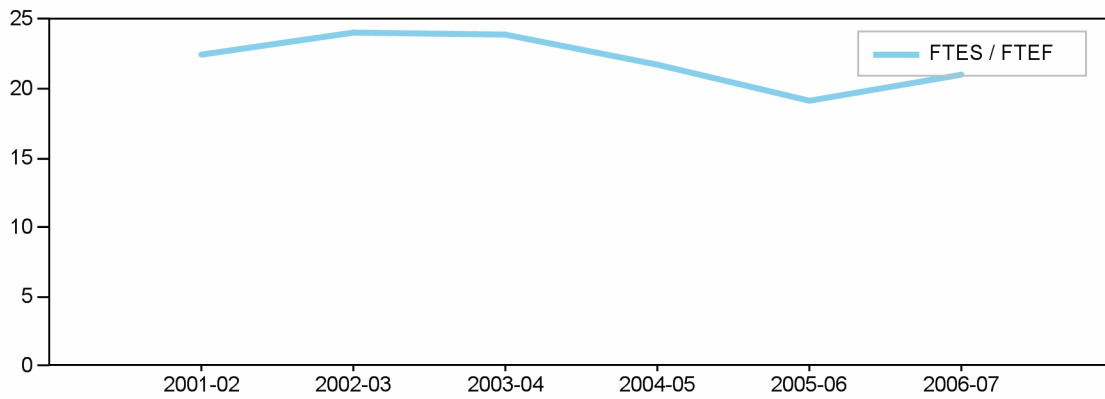
Los Angeles City College
Comprehensive Program Review 2008

Social Science Department
Section IId. Department Overview – FTEF



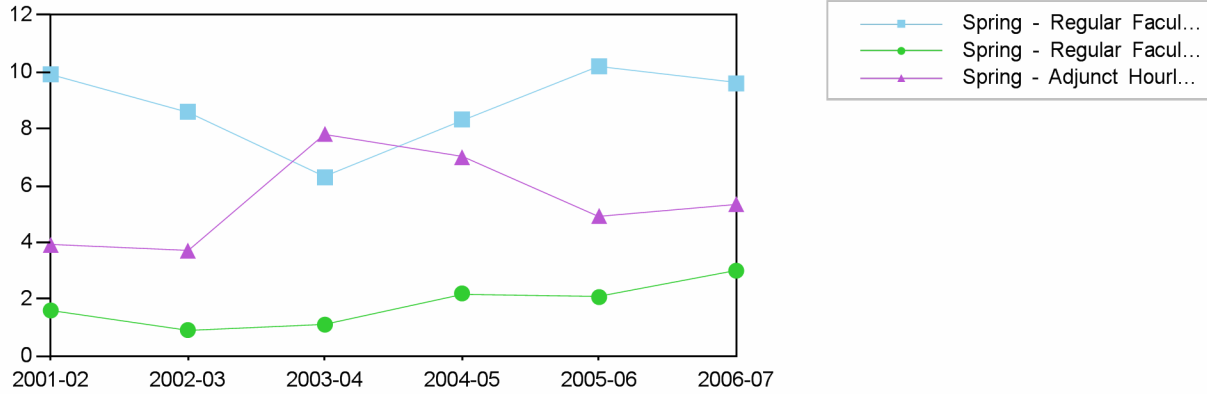
Fall	2001-02	2002-03	2003-04	2004-05	2005-06	2006-07
Regular Faculty FTE	9.32	8.52	8.000000000000001	7.11	11.09	10.71
Regular Faculty at Hourly Rate	2	1.4	1.53	1.2	1.4	1.2
Adjunct Hourly Rate	3.5	4.9	5.49	7.73	5.13	3.7
Total	14.82	14.82	15.02	16.04	17.62	15.61

Fall FTES / FTEF Ratio



Fall	2001-02	2002-03	2003-04	2004-05	2005-06	2006-07
Total FTEF	14.82	14.82	15.02	16.04	17.62	15.61
Total FTES	333.01	356.17	359.42	349.26	338.17	328.94
FTES / FTEF	22.5	24.0	23.9	21.8	19.2	21.1

Spring FTEF (Full Time Equivalent Faculty)



Spring

2001-02 2002-03 2003-04 2004-05 2005-06 2006-07

Spring Spring Spring Spring Spring Spring

Regular Faculty FTE

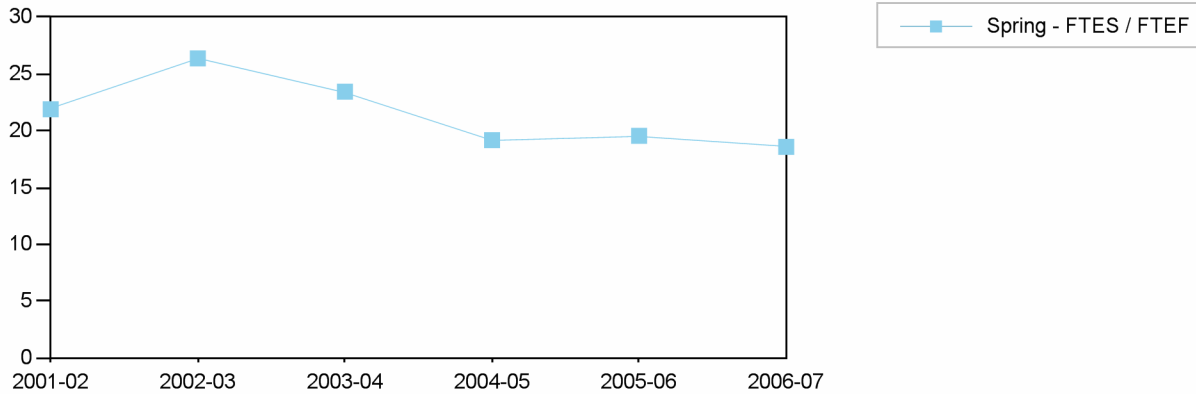
Regular Faculty FTE	9.92	8.6	6.29	8.33	10.2	9.6
Regular Faculty at Hourly Rate	1.6	0.91	1.1	2.2	2.07	3
Adjunct Hourly Rate	3.91	3.71	7.82	7	4.93	5.35
Total	15.43	13.22	15.21	17.53	17.2	17.95

Regular Faculty at Hourly Rate

Adjunct Hourly Rate

Total

Spring FTES / FTEF Ratio



Spring

2001-02 2002-03 2003-04 2004-05 2005-06 2006-07

Spring Spring Spring Spring Spring Spring

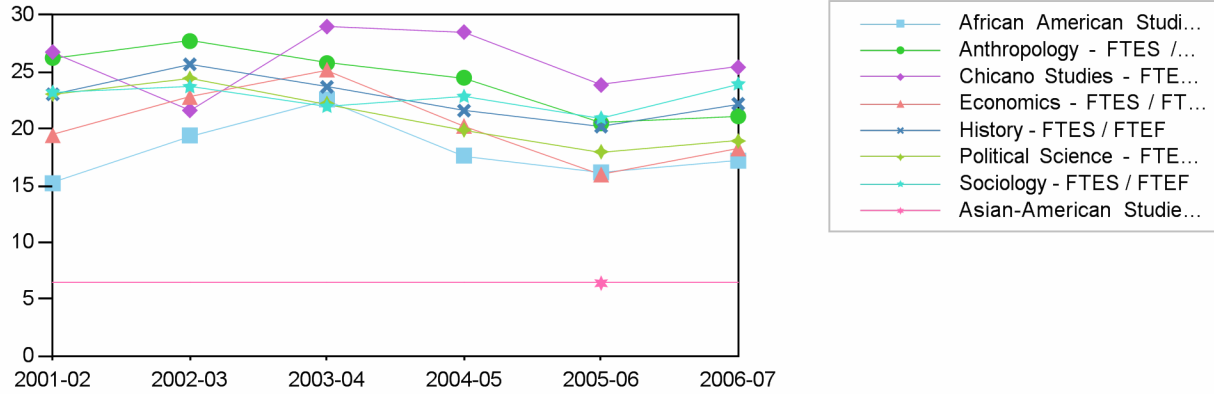
Total FTEF

Total FTES

FTES / FTEF

Total FTEF	15.43	13.22	15.21	17.53	17.2	17.95
Total FTES	337.77	348.67	356.69	336.24	336.42	333.64
FTES / FTEF	21.9	26.4	23.5	19.2	19.6	18.6

Fall FTES / FTEF Ratio by Discipline



2001-02 2002-03 2003-04 2004-05 2005-06 2006-07

African American Studies	Total FTEF	1.49	1.32	1.33	1.31	1.29	1.1
	Total FTES	22.65	25.63	30.03	23.1	20.85	18.91
	FTES / FTEF	15.2	19.4	22.6	17.6	16.2	17.2
Anthropology	Total FTEF	1.6	1.6	1.6	1.6	1.8	1.6
	Total FTES	41.99	44.36	41.25	39.2	36.87	33.76
	FTES / FTEF	26.2	27.7	25.8	24.5	20.5	21.1
Chicano Studies	Total FTEF	1.33	1.7	1.29	1.33	1.33	1.3
	Total FTES	35.59	36.76	37.41	37.93	31.73	33.04
	FTES / FTEF	26.8	21.6	29.0	28.5	23.9	25.4
Economics	Total FTEF	2	2	2	2	2	2
	Total FTES	38.89	45.62	50.43	40.51	31.95	36.54
	FTES / FTEF	19.4	22.8	25.2	20.3	16.0	18.3
History	Total FTEF	4	3.8	3.6	3.8	4	3.6
	Total FTES	92.16	97.59	85.28	82.08	80.77	79.92
	FTES / FTEF	23.0	25.7	23.7	21.6	20.2	22.2
Political Science	Total FTEF	2.6	2.6	3	3.6	4	3.41
	Total FTES	59.95	63.57	66.71	71.63	71.91	64.54
	FTES / FTEF	23.1	24.5	22.2	19.9	18.0	18.9
Sociology	Total FTEF	1.8	1.8	2.2	2.4	3	2.6
	Total FTES	41.78	42.64	48.31	54.81	62.81	62.23
	FTES / FTEF	23.2	23.7	22.0	22.8	20.9	23.9
Asian-American Studies	Total FTEF	0	0	0	0	0.2	0
	Total FTES					1.28	
	FTES / FTEF	NaN	NaN	NaN	NaN	6.4	NaN