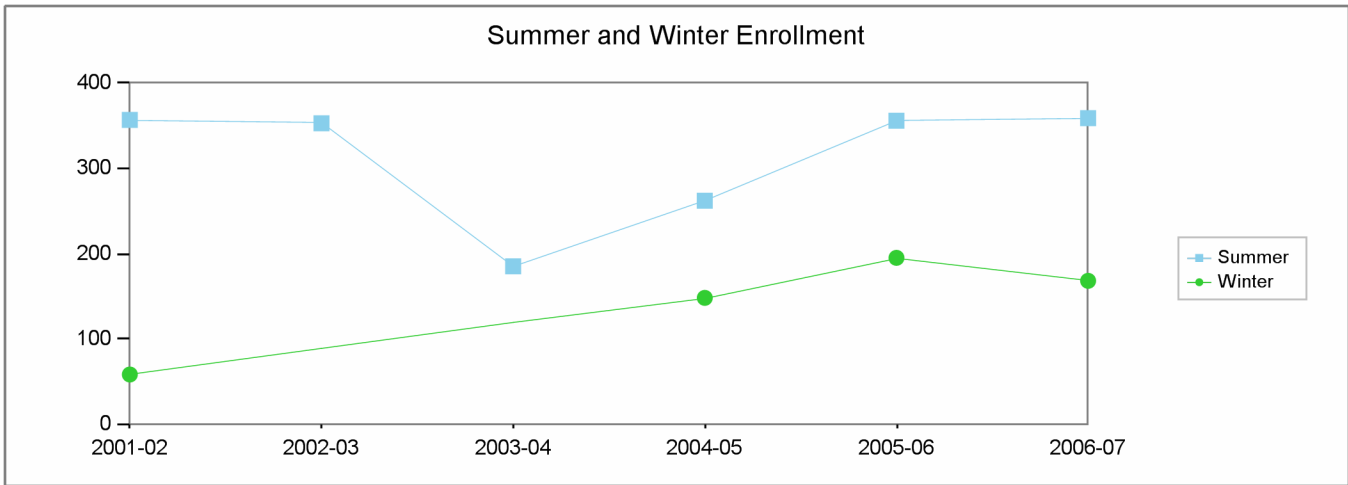


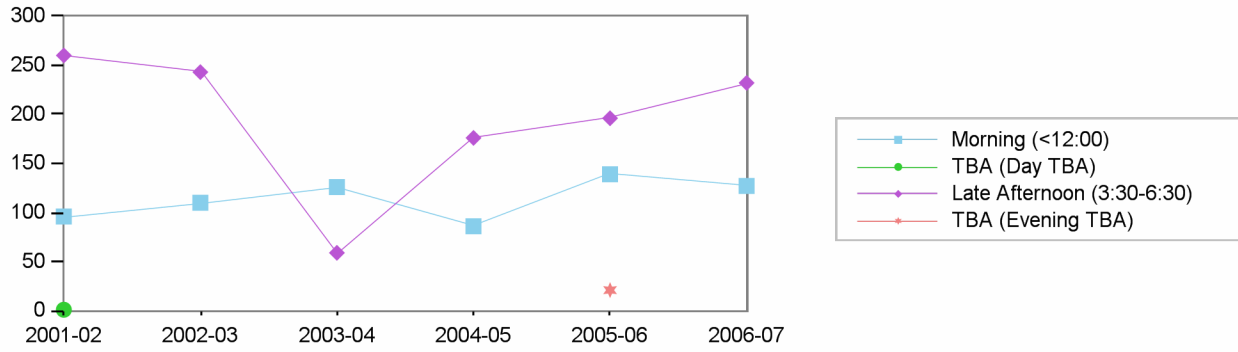
**Los Angeles City College  
Comprehensive Program Review 2008**

**Speech Department  
Section IIa. Department Overview – Response to Demand: Enrollment**

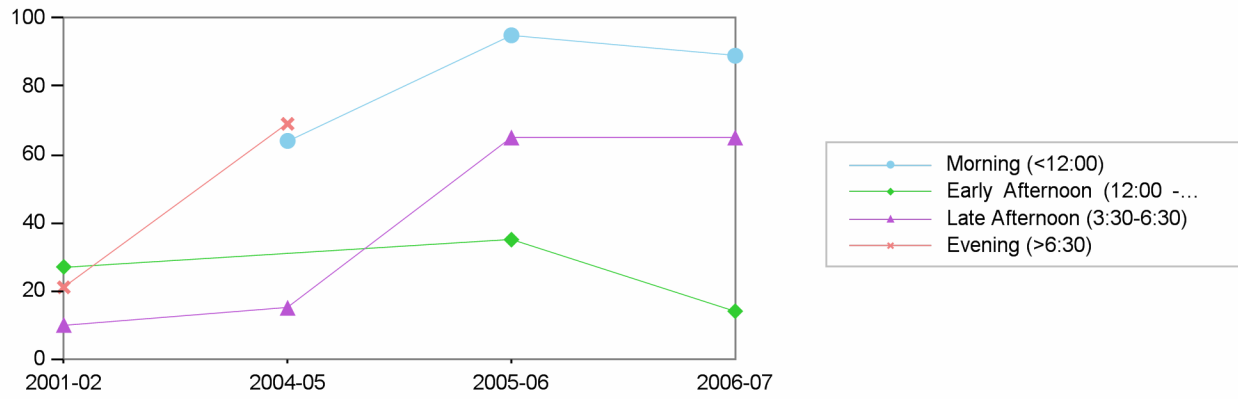


	2001-02	2002-03	2003-04	2004-05	2005-06	2006-07
Summer	357	353	185	262	356	359
Winter	58			148	195	168

Summer Enrollment by Time of Day



Winter Enrollment by Time of Day

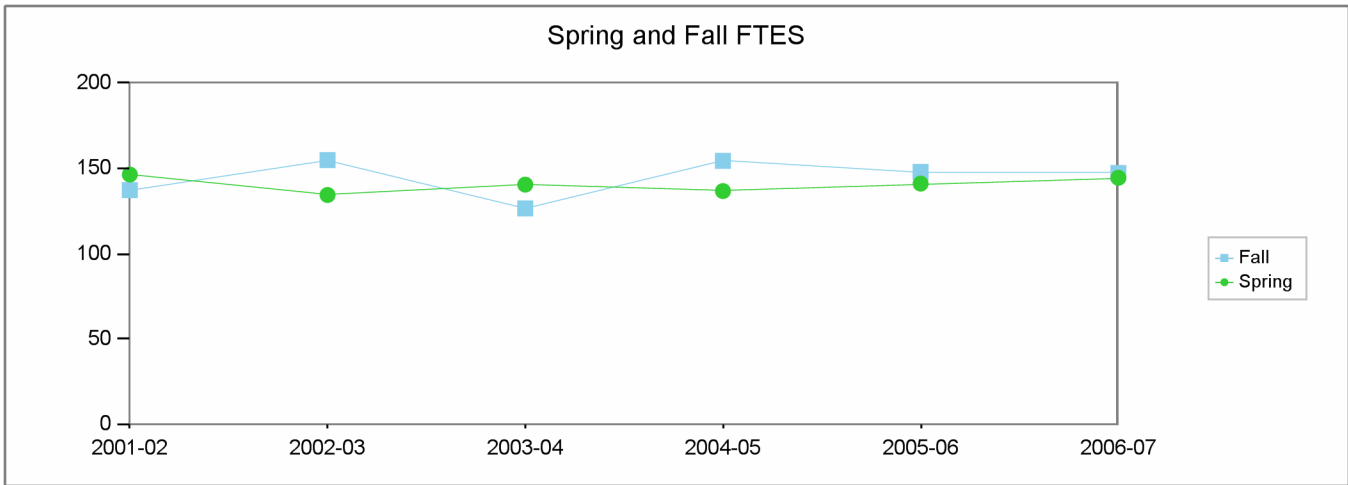


Morning (<12:00)	Early Afternoon (12:00 - 3:30)	TBA (Day TBA)	Late Afternoon (3:30-6:30)	Evening (>6:30)	TBA (Evening TBA)
Summer	Winter	Winter	Summer	Summer	Winter
Summer	Winter	Winter	Summer	Summer	Winter

2001-02	96		27	1	260	10	21	
2002-03	110				243			
2003-04	126				59			
2004-05	86	64			176	15	69	
2005-06	139	95	35		196	65		21
2006-07	127	89	14		232	65		

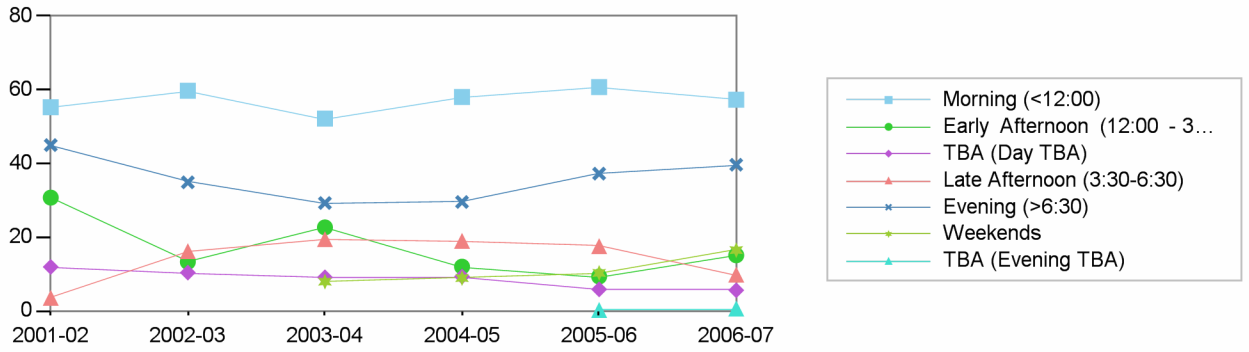
**Los Angeles City College  
Comprehensive Program Review 2008**

**Speech Department  
Section IIa. Department Overview – Response to Demand: FTES**

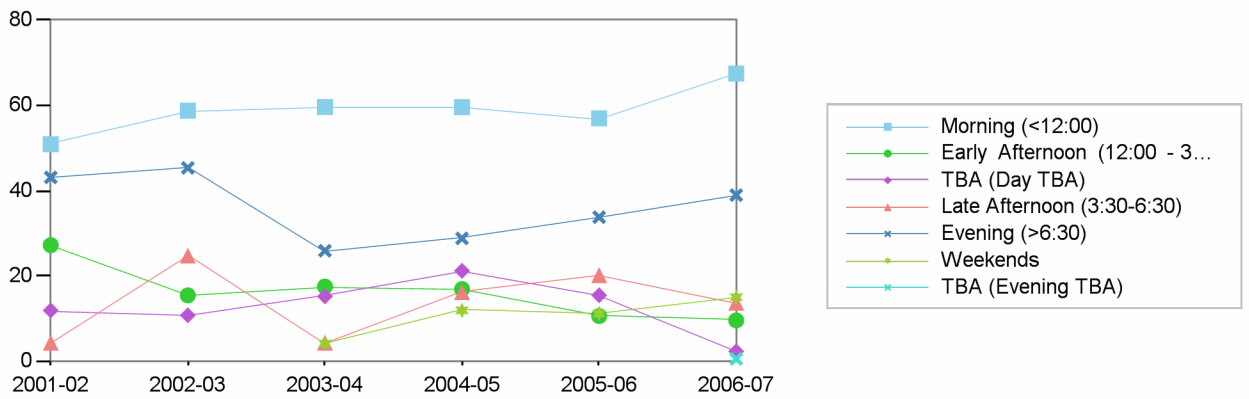


	2001-02	2002-03	2003-04	2004-05	2005-06	2006-07
Fall	137	155	126	154	148	147
Spring	146	134	140	137	141	145

Spring FTES by Time of Day



Fall FTES by Time of Day

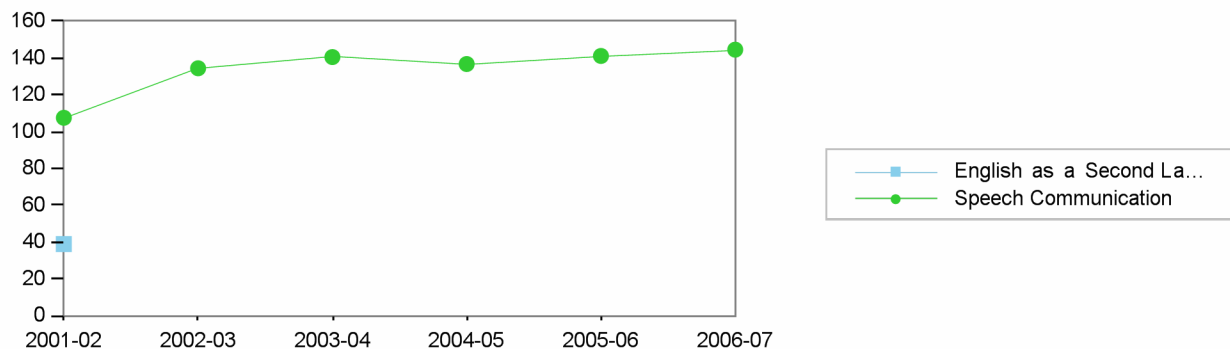


Morning (<12:00)    Early Afternoon (12:00 - 3:30)    TBA (Day TBA)    Late Afternoon (3:30-6:30)    Evening (>6:30)    Weekends    TBA (Evening TBA)

Fall    Spring    Fall    Spring    Fall    Spring    Fall    Spring    Fall    Spring    Fall    Spring    Spring    Fall

2001-02	51	55	27	31	12	12	4	4	43	45				
2002-03	59	60	15	13	11	10	25	16	45	35				
2003-04	60	52	17	23	15	9	4	19	26	29	4	8		
2004-05	60	58	17	12	21	9	16	19	29	30	12	9		
2005-06	57	61	11	9	15	6	20	18	34	37	11	10	0	
2006-07	67	57	10	15	2	6	14	10	39	40	15	16	1	0

Spring FTES by Discipline



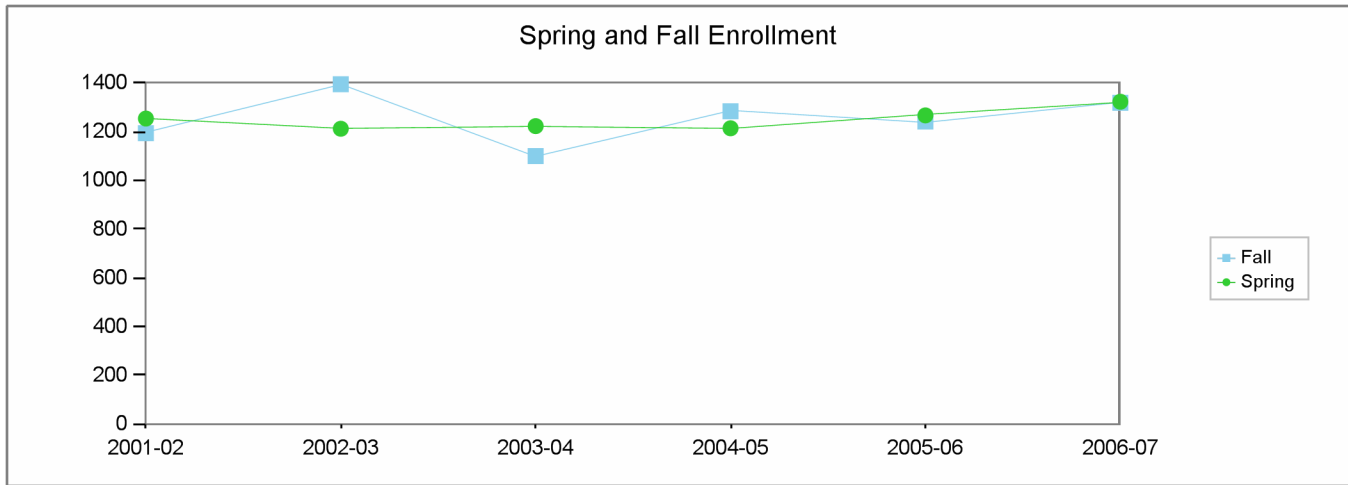
Fall FTES by Discipline



		2001-02	2002-03	2003-04	2004-05	2005-06	2006-07
Fall	English as a Second Language	38					
	Speech Communication	99	155	126	154	148	147
Spring	English as a Second Language	39					
	Speech Communication	108	134	140	137	141	145

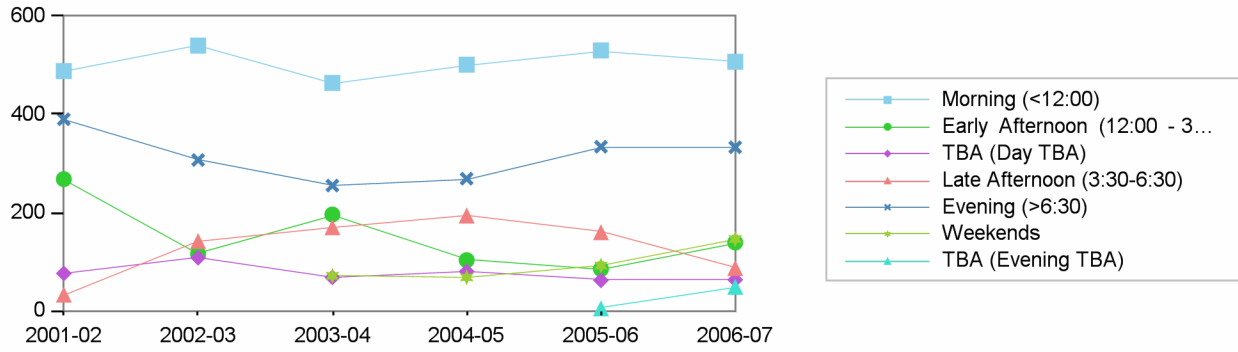
**Los Angeles City College**  
**Comprehensive Program Review 2008**

**Speech Department**  
**Section IIa. Department Overview – Response to Demand: Enrollment**

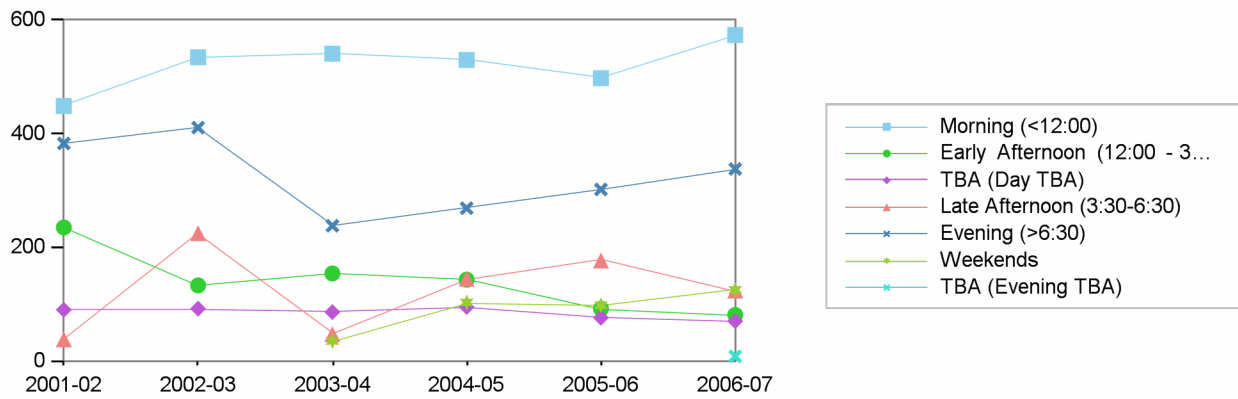


	2001-02	2002-03	2003-04	2004-05	2005-06	2006-07
Fall	1195	1396	1101	1285	1243	1320
Spring	1255	1213	1224	1215	1268	1324

Spring Enrollment by Time of Day



Fall Enrollment by Time of Day



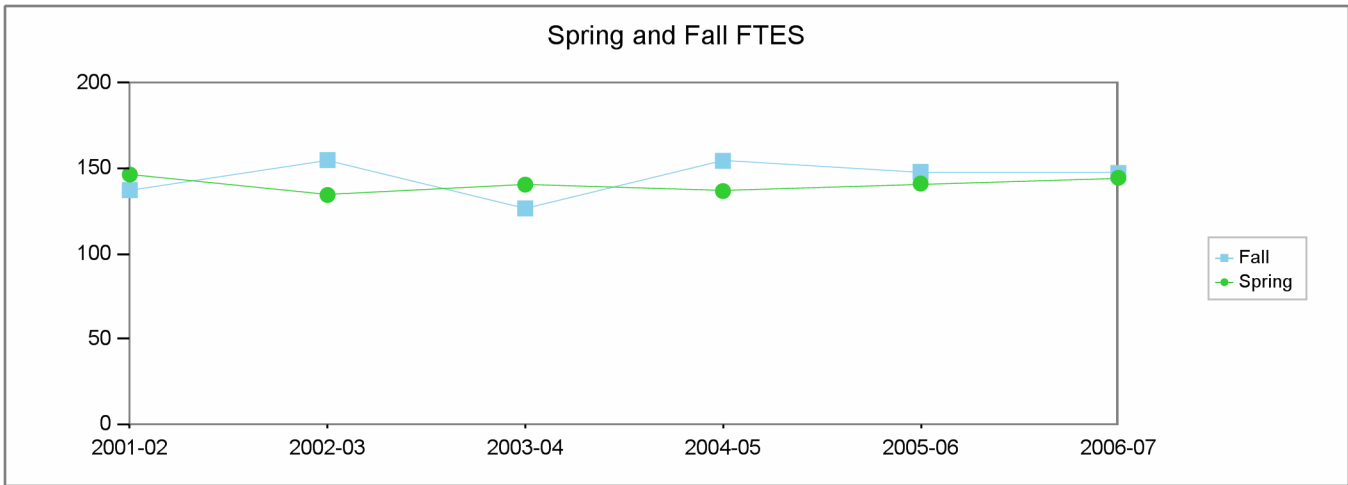
Morning (<12:00)    Early Afternoon (12:00 - 3:30)    TBA (Day TBA)    Late Afternoon (3:30-6:30)    Evening (>6:30)    Weekends    TBA (Evening TBA)

Fall    Spring    Fall    Spring    Fall    Spring    Fall    Spring    Fall    Spring    Fall    Spring    Spring    Fall

2001-02	449	488	235	268	90	76	38	33	383	390				
2002-03	535	540	133	116	92	108	225	142	411	307				
2003-04	541	464	154	196	86	68	47	170	238	255	35	71		
2004-05	530	501	143	103	95	80	145	194	269	269	103	68		
2005-06	498	530	92	85	76	62	177	160	302	334	98	92	5	
2006-07	574	507	81	139	70	63	124	87	338	333	125	146	49	8

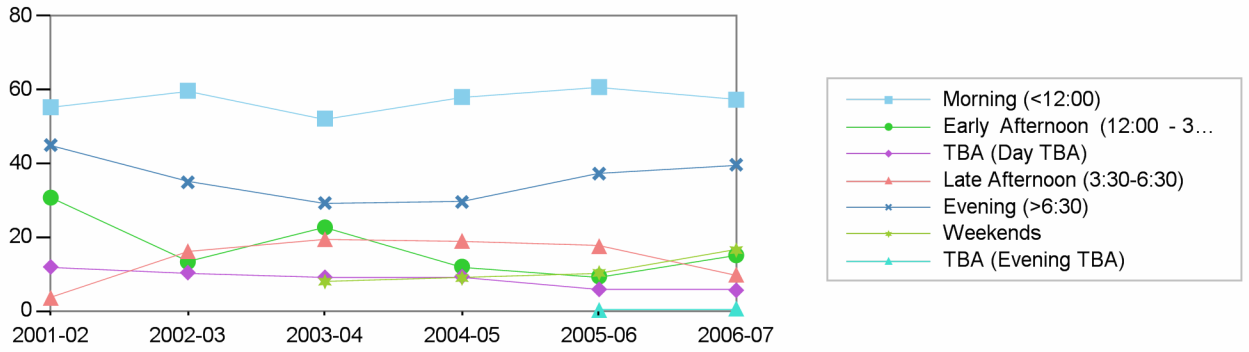
**Los Angeles City College  
Comprehensive Program Review 2008**

**Speech Department  
Section IIa. Department Overview – Response to Demand: FTES**

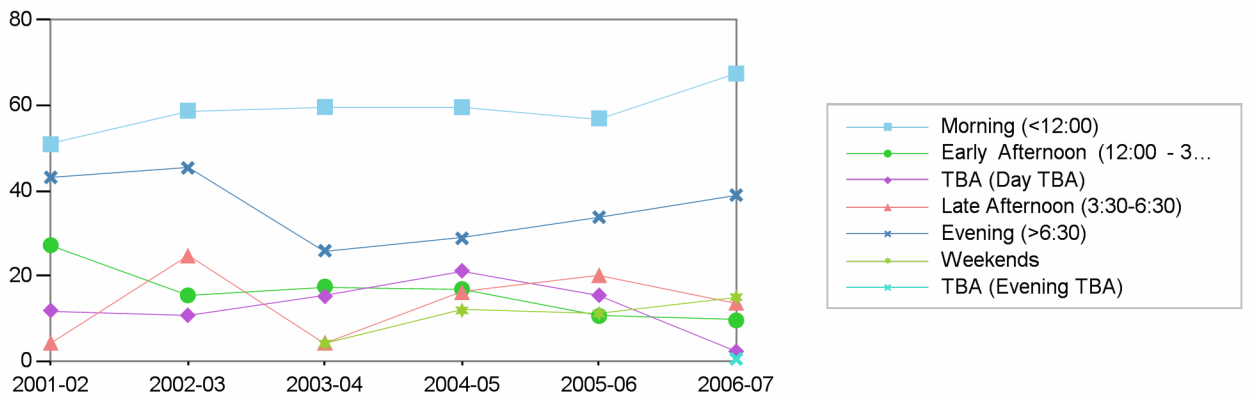


	2001-02	2002-03	2003-04	2004-05	2005-06	2006-07
Fall	137	155	126	154	148	147
Spring	146	134	140	137	141	145

Spring FTES by Time of Day



Fall FTES by Time of Day

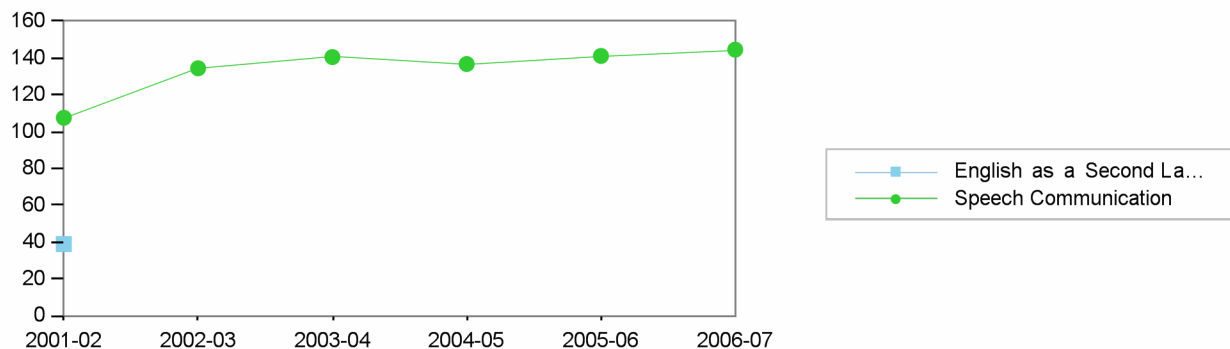


Morning (<12:00)    Early Afternoon (12:00 - 3:30)    TBA (Day TBA)    Late Afternoon (3:30-6:30)    Evening (>6:30)    Weekends    TBA (Evening TBA)

Fall    Spring    Fall    Spring    Fall    Spring    Fall    Spring    Fall    Spring    Fall    Spring    Spring    Fall

2001-02	51	55	27	31	12	12	4	4	43	45				
2002-03	59	60	15	13	11	10	25	16	45	35				
2003-04	60	52	17	23	15	9	4	19	26	29	4	8		
2004-05	60	58	17	12	21	9	16	19	29	30	12	9		
2005-06	57	61	11	9	15	6	20	18	34	37	11	10	0	
2006-07	67	57	10	15	2	6	14	10	39	40	15	16	1	0

Spring FTES by Discipline



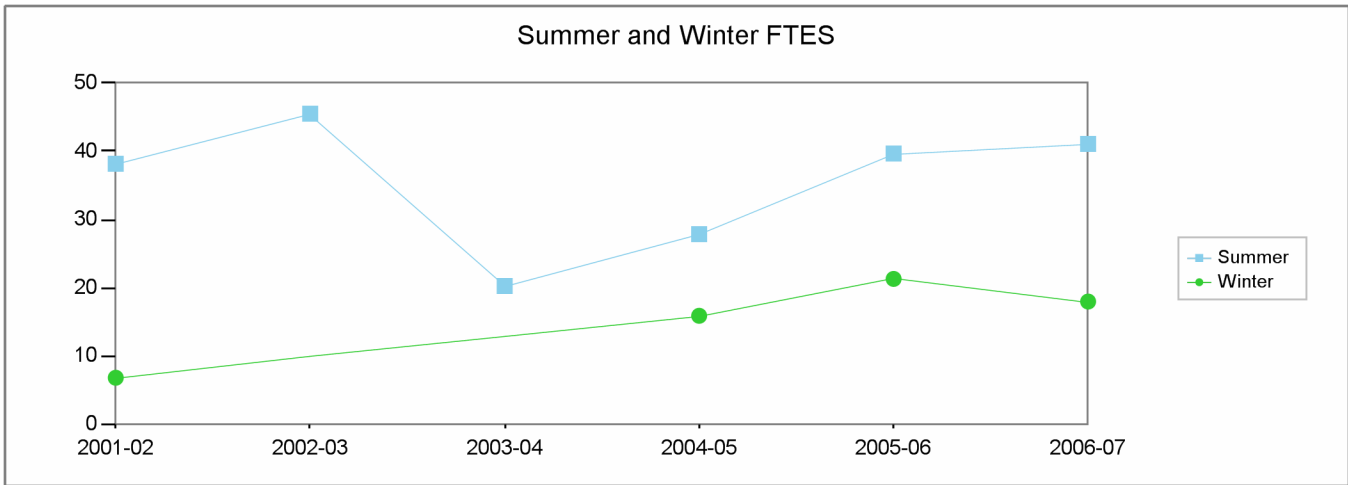
Fall FTES by Discipline



		2001-02	2002-03	2003-04	2004-05	2005-06	2006-07
Fall	English as a Second Language	38					
	Speech Communication	99	155	126	154	148	147
Spring	English as a Second Language	39					
	Speech Communication	108	134	140	137	141	145

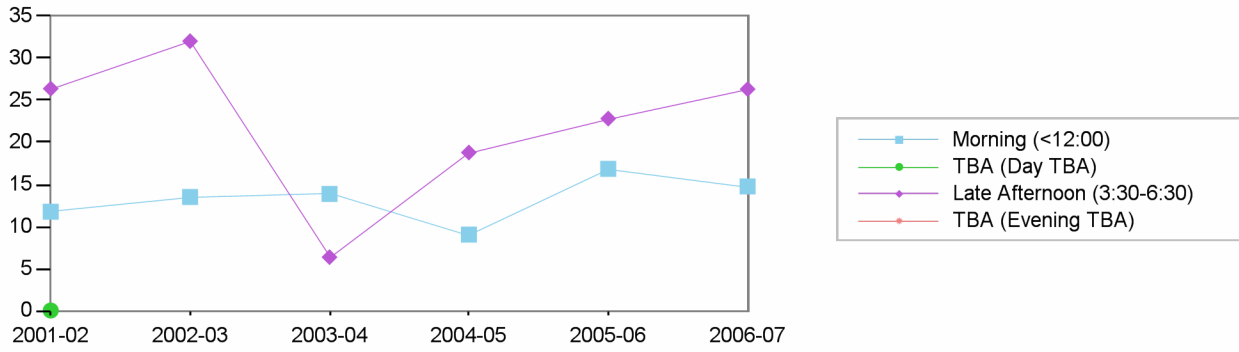
Los Angeles City College  
Comprehensive Program Review 2008

Speech Department  
Section IIa. Department Overview – Response to Demand: FTES

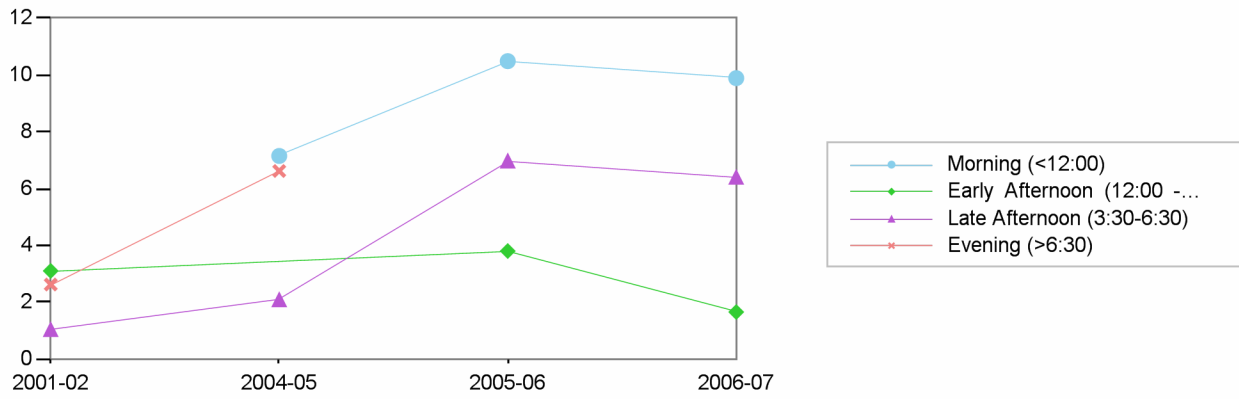


	2001-02	2002-03	2003-04	2004-05	2005-06	2006-07
Summer	38	46	20	28	40	41
Winter	7			16	21	18

Summer FTES by Time of Day



Winter FTES by Time of Day

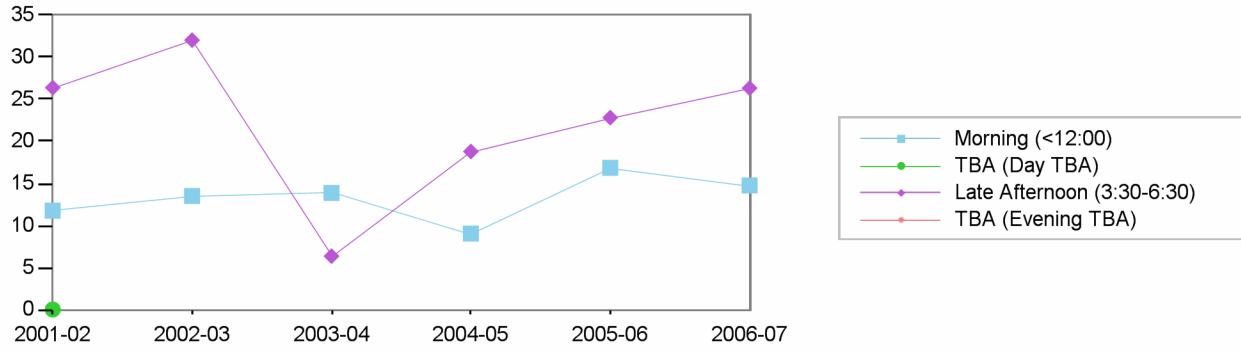


Morning (<12:00)    Early Afternoon (12:00 - 3:30)    TBA (Day TBA)    Late Afternoon (3:30-6:30)    Evening (>6:30)    TBA (Evening TBA)

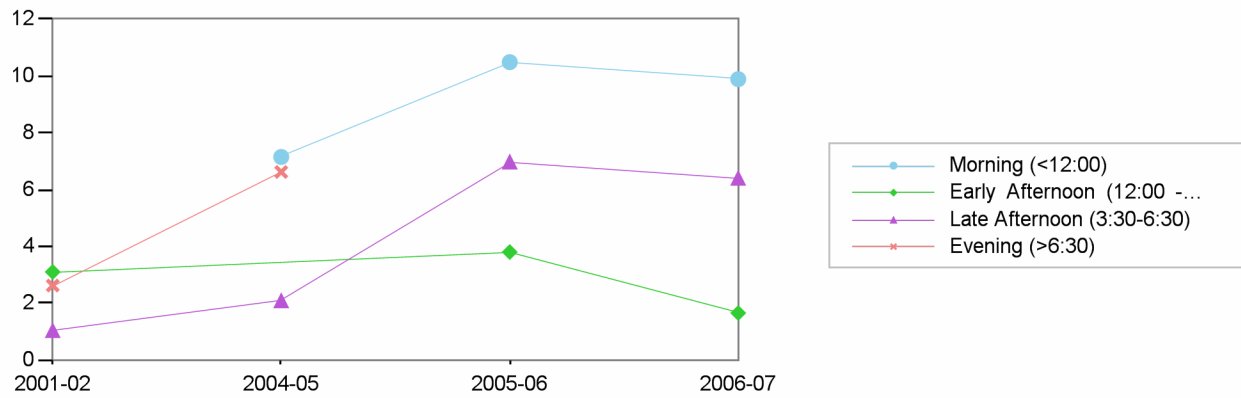
Summer    Winter    Winter    Summer    Summer    Winter    Winter    Summer

2001-02	12		3	0	26	1	3	
2002-03	14				32			
2003-04	14				6			
2004-05	9	7			19	2	7	
2005-06	17	10	4		23	7		
2006-07	15	10	2		26	6		

Summer FTES by Time of Day



Winter FTES by Time of Day

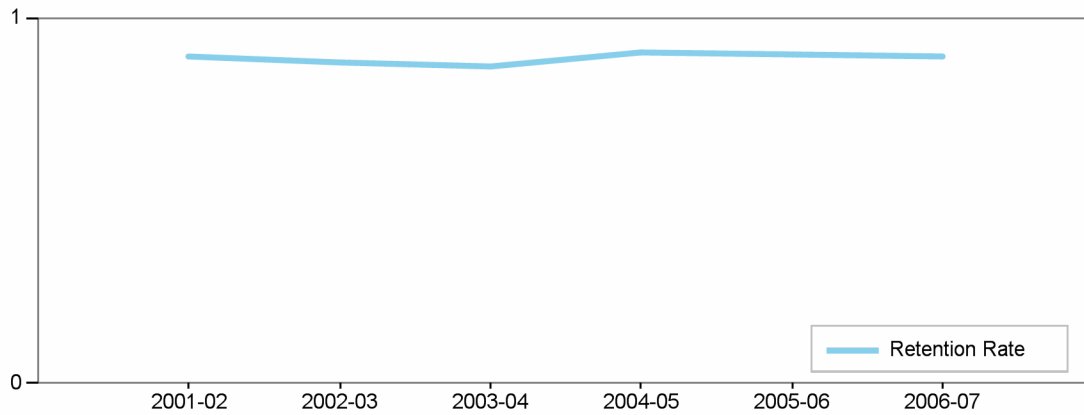


		2001-02	2002-03	2003-04	2004-05	2005-06	2006-07
Summer	Speech Communication	38	46	20	28	40	41
Winter	Speech Communication	7			16	21	18

**Los Angeles City College**  
**Comprehensive Program Review 2008**

**Speech Department**  
**Section IIc. Department Overview – Student Achievements**

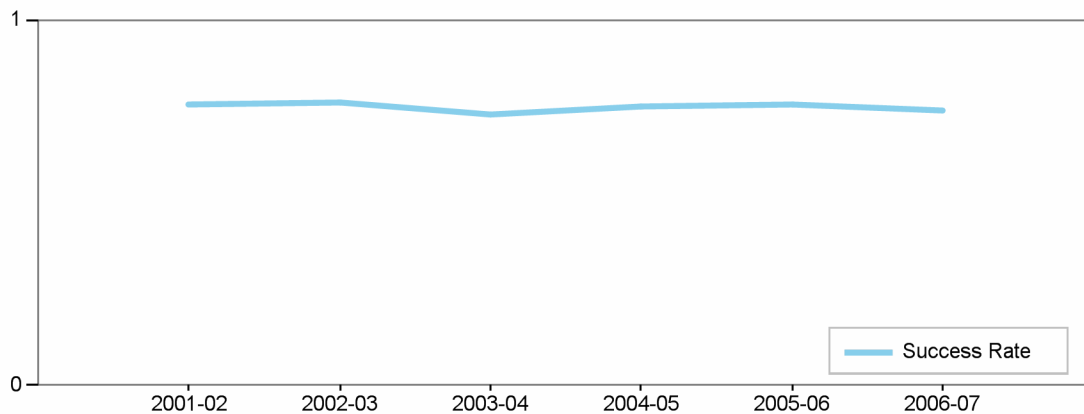
Department's Retention Rate



Retention Rate=  
 Numerator: Number of enrollments with A,B,C,D,F,CR,NC,I  
 Denominator: Number of enrollments with A,B,C,D,F,CR,NC,W,I

<b>Retention Rate</b>	2001-02	2002-03	2003-04	2004-05	2005-06	2006-07
Speech	89 %	88 %	87 %	91 %	90 %	89 %

Department's Success Rate

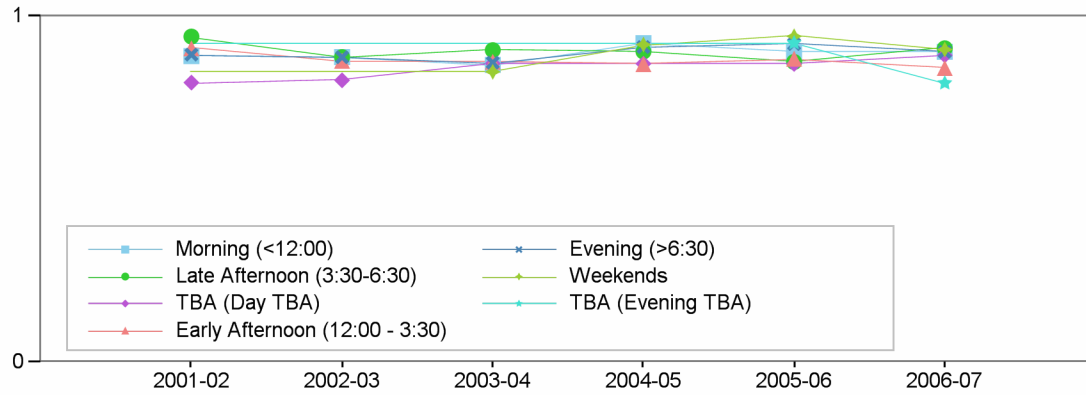


Success Rate =  
 Numerator: Number of enrollments with A,B,C,CR  
 Denominator: Number of enrollments with A,B,C,D,F,CR,NC,W,I

<b>Success Rate</b>	2001-02	2002-03	2003-04	2004-05	2005-06	2006-07
Speech	77 %	77 %	74 %	76 %	77 %	75 %

## Department Success and Retention Rates by Time of Day

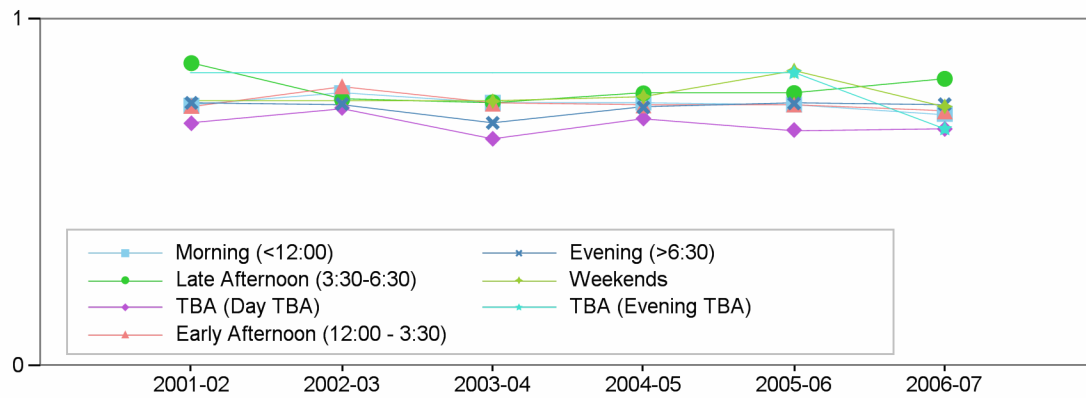
### Retention Rate by Time of Day



#### Retention Rate

	2001-02	2002-03	2003-04	2004-05	2005-06	2006-07
Morning (<12:00)	88 %	88 %	86 %	92 %	90 %	90 %
Late Afternoon (3:30-6:30)	94 %	88 %	90 %	90 %	87 %	91 %
TBA (Day TBA)	81 %	82 %	86 %	86 %	86 %	89 %
Early Afternoon (12:00 - 3:30)	91 %	87 %	87 %	86 %	88 %	85 %
Evening (>6:30)	89 %	88 %	87 %	91 %	92 %	90 %
Weekends	NaN	NaN	84 %	92 %	94 %	90 %
TBA (Evening TBA)	NaN	NaN	NaN	NaN	92 %	81 %

### Success Rate by Time of Day

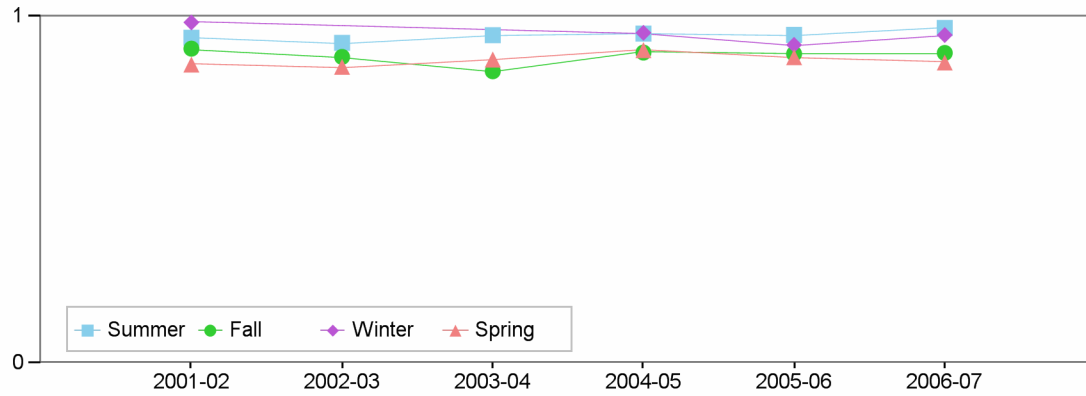


#### Success Rate

	2001-02	2002-03	2003-04	2004-05	2005-06	2006-07
Morning (<12:00)	75 %	79 %	76 %	76 %	76 %	73 %
Late Afternoon (3:30-6:30)	87 %	77 %	76 %	79 %	79 %	83 %
TBA (Day TBA)	70 %	75 %	66 %	71 %	68 %	68 %
Early Afternoon (12:00 - 3:30)	75 %	81 %	76 %	75 %	75 %	74 %
Evening (>6:30)	76 %	76 %	70 %	75 %	76 %	76 %
Weekends	NaN	NaN	76 %	78 %	85 %	75 %
TBA (Evening TBA)	NaN	NaN	NaN	NaN	85 %	68 %

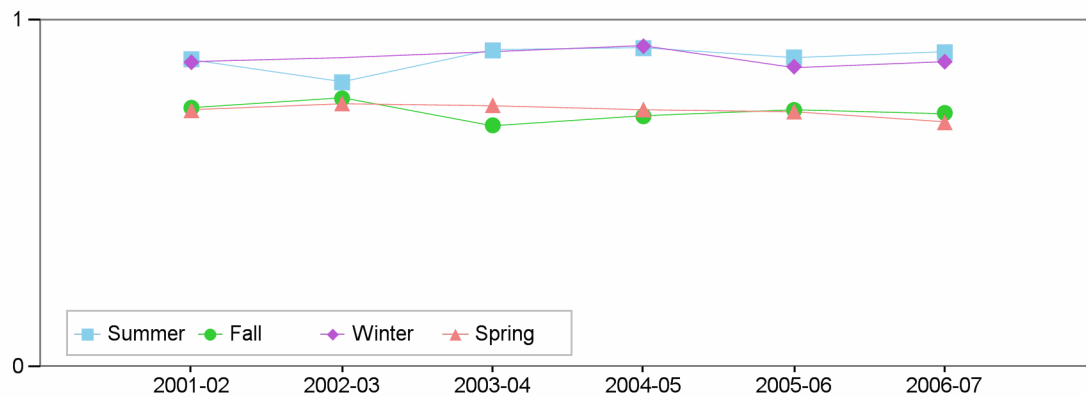
## Department Success and Retention Rates by Term

### Retention Rate by Term



Retention Rate	2001-02	2002-03	2003-04	2004-05	2005-06	2006-07
Summer	94 %	92 %	95 %	95 %	95 %	97 %
Fall	91 %	88 %	84 %	90 %	89 %	89 %
Winter	98 %	NaN	NaN	95 %	92 %	95 %
Spring	86 %	85 %	88 %	90 %	88 %	87 %

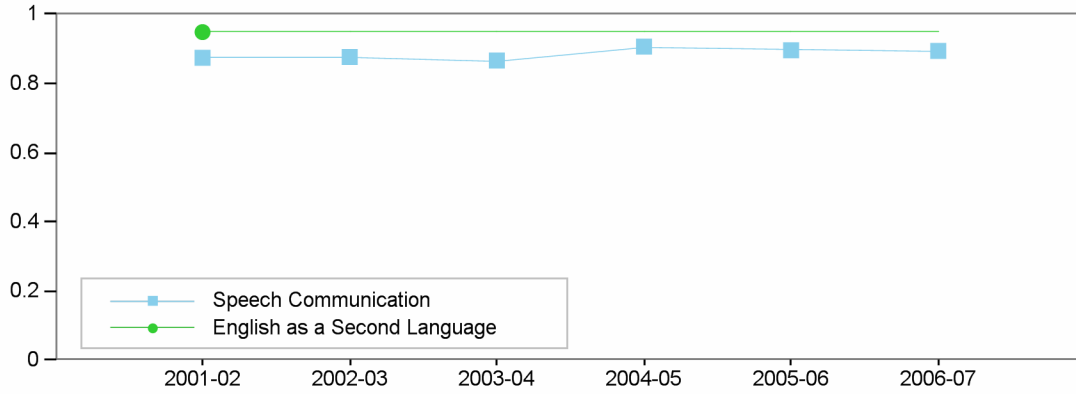
### Success Rate by Term



Success Rate	2001-02	2002-03	2003-04	2004-05	2005-06	2006-07
Summer	89 %	82 %	91 %	92 %	89 %	91 %
Fall	75 %	78 %	70 %	72 %	74 %	73 %
Winter	88 %	NaN	NaN	93 %	87 %	88 %
Spring	74 %	76 %	76 %	74 %	74 %	71 %

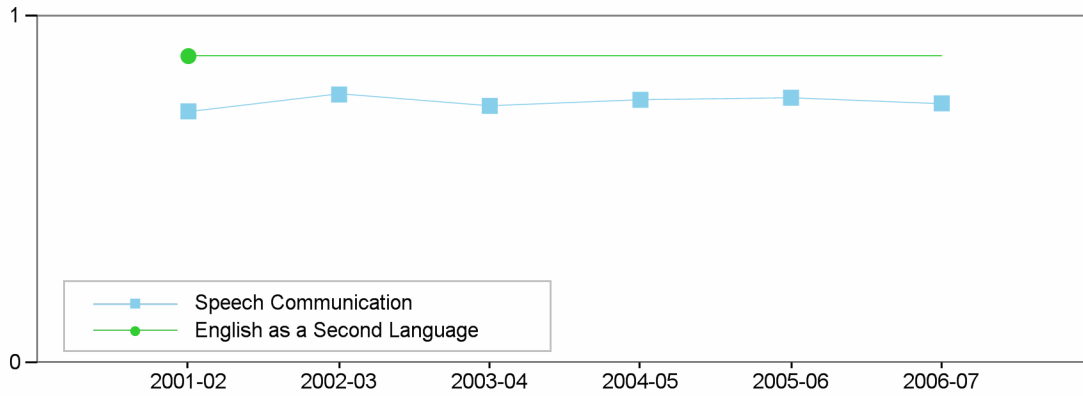
## Department Success and Retention Rates by Discipline

### Retention Rate by Discipline



<b>Retention Rate</b>	2001-02	2002-03	2003-04	2004-05	2005-06	2006-07
Speech Communication	87 %	88 %	87 %	91 %	90 %	89 %
English as a Second Language	95 %	NaN	NaN	NaN	NaN	NaN

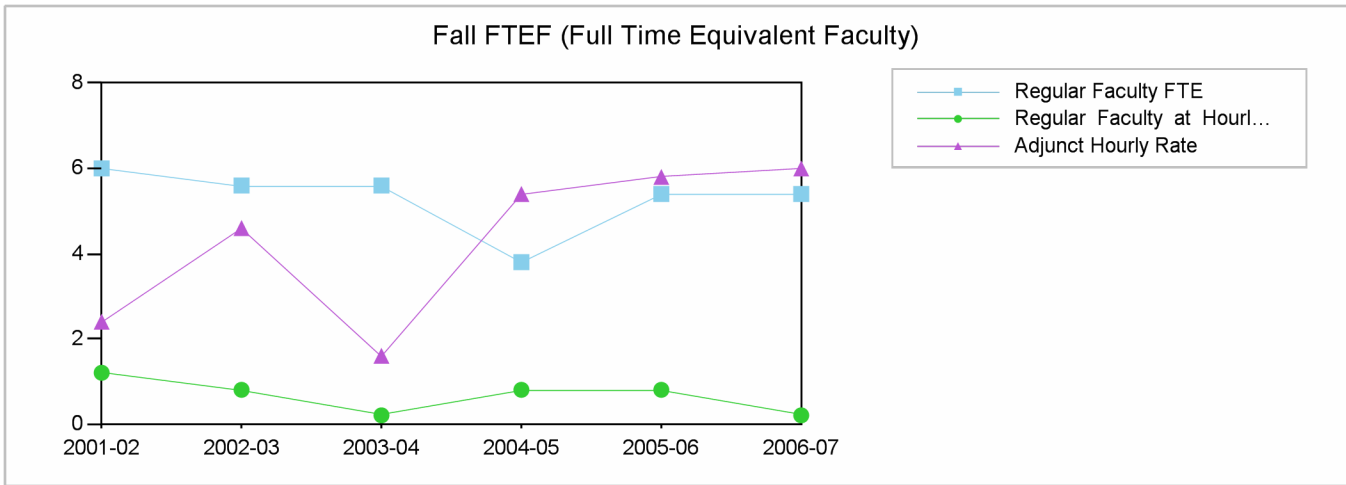
### Success Rate by Discipline



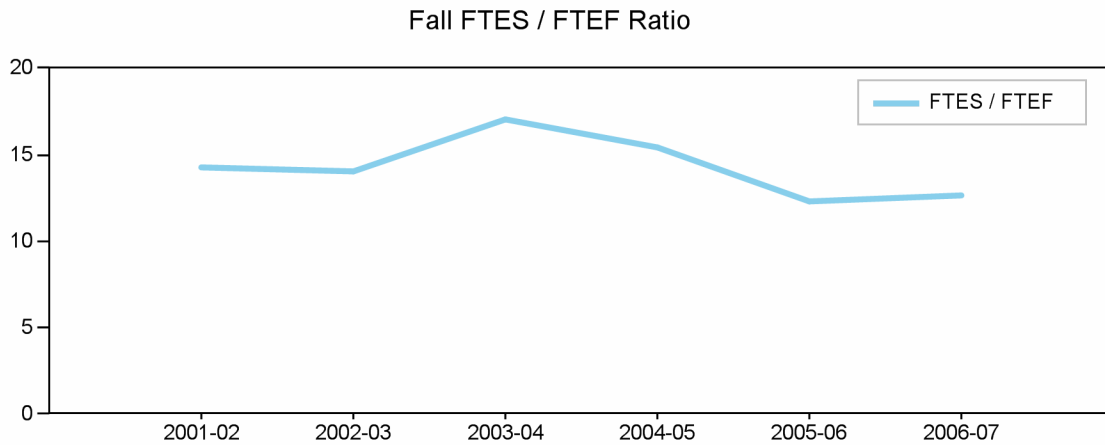
<b>Success Rate</b>	2001-02	2002-03	2003-04	2004-05	2005-06	2006-07
Speech Communication	73 %	77 %	74 %	76 %	77 %	75 %
English as a Second Language	89 %	NaN	NaN	NaN	NaN	NaN

**Los Angeles City College  
Comprehensive Program Review 2008**

**Speech Department  
Section IId. Department Overview – FTEF**

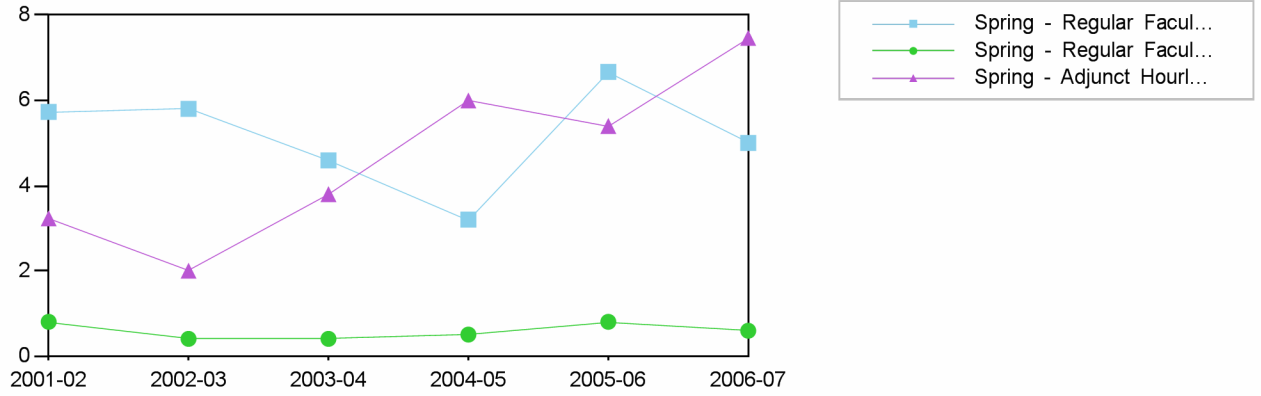


Fall	2001-02	2002-03	2003-04	2004-05	2005-06	2006-07
Regular Faculty FTE	6	5.6	5.6	3.8	5.4	5.4
Regular Faculty at Hourly Rate	1.2	0.8	0.2	0.8	0.8	0.2
Adjunct Hourly Rate	2.4	4.6	1.6	5.4	5.8	6
<b>Total</b>	<b>9.6</b>	<b>11</b>	<b>7.4</b>	<b>10</b>	<b>12</b>	<b>11.6</b>



Fall	2001-02	2002-03	2003-04	2004-05	2005-06	2006-07
Total FTEF	9.6	11	7.4	10	12	11.6
Total FTES	137.26	154.92	126.49	154.38	147.9	147.27
<b>FTES / FTEF</b>	<b>14.3</b>	<b>14.1</b>	<b>17.1</b>	<b>15.4</b>	<b>12.3</b>	<b>12.7</b>

Spring FTEF (Full Time Equivalent Faculty)



Spring

**2001-02 2002-03 2003-04 2004-05 2005-06 2006-07**

**Spring Spring Spring Spring Spring Spring**

Regular Faculty FTE

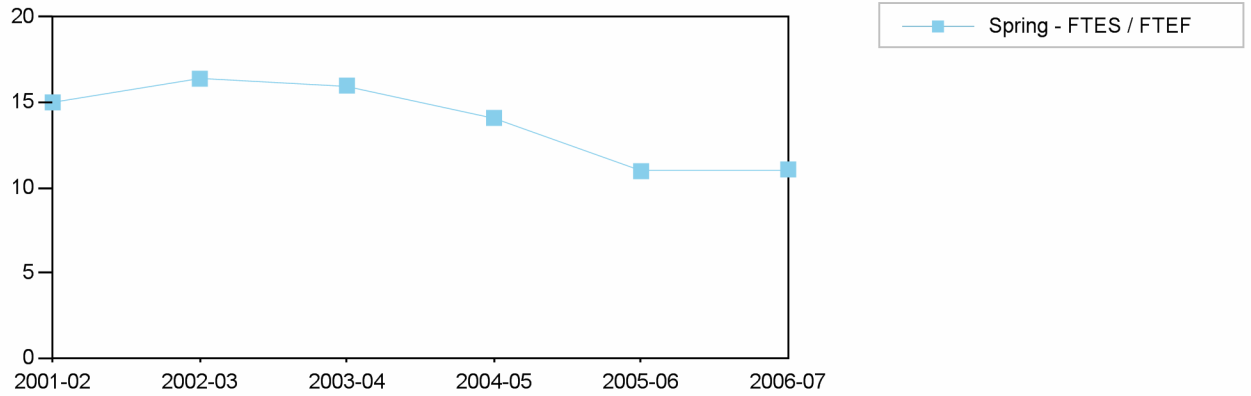
Regular Faculty FTE	5.73	5.8	4.59	3.2	6.67	5
Regular Faculty at Hourly Rate	0.8	0.4	0.4	0.5	0.8	0.59
Adjunct Hourly Rate	3.23	2	3.8	6	5.4	7.47
Total	9.76	8.2	8.79	9.7	12.87	13.06

Regular Faculty at Hourly Rate

Adjunct Hourly Rate

Total

Spring FTES / FTEF Ratio



Spring

**2001-02 2002-03 2003-04 2004-05 2005-06 2006-07**

**Spring Spring Spring Spring Spring Spring**

Total FTEF

Total FTES

FTES / FTEF

Total FTEF	9.76	8.2	8.79	9.7	12.87	13.06
Total FTES	146.4	134.41	140.49	136.71	141.09	144.51
FTES / FTEF	15.0	16.4	16.0	14.1	11.0	11.1

Fall FTES / FTEF Ratio by Discipline



2001-02 2002-03 2003-04 2004-05 2005-06 2006-07

**English as a Second Language**

Total FTEF  
Total FTES  
FTES / FTEF

Total FTEF	2	0	0	0	0	0
Total FTES	38.05					
FTES / FTEF	19.0	NaN	NaN	NaN	NaN	NaN

**Speech Communication**

Total FTEF  
Total FTES  
FTES / FTEF

Total FTEF	7.6	11	7.4	10	12	11.6
Total FTES	99.21	154.92	126.49	154.38	147.9	147.27
FTES / FTEF	13.1	14.1	17.1	15.4	12.3	12.7