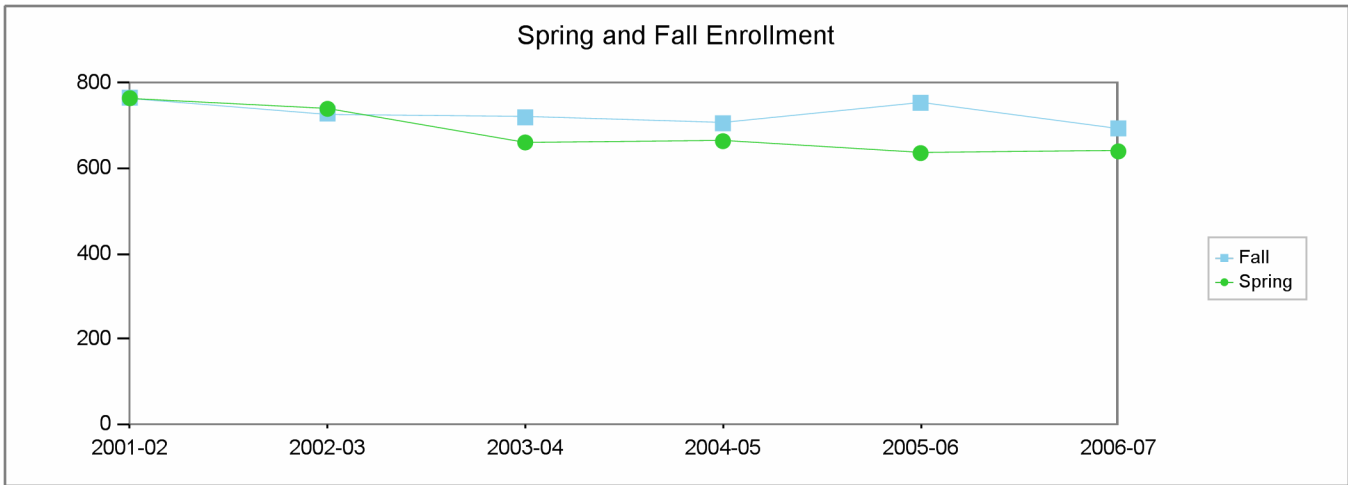


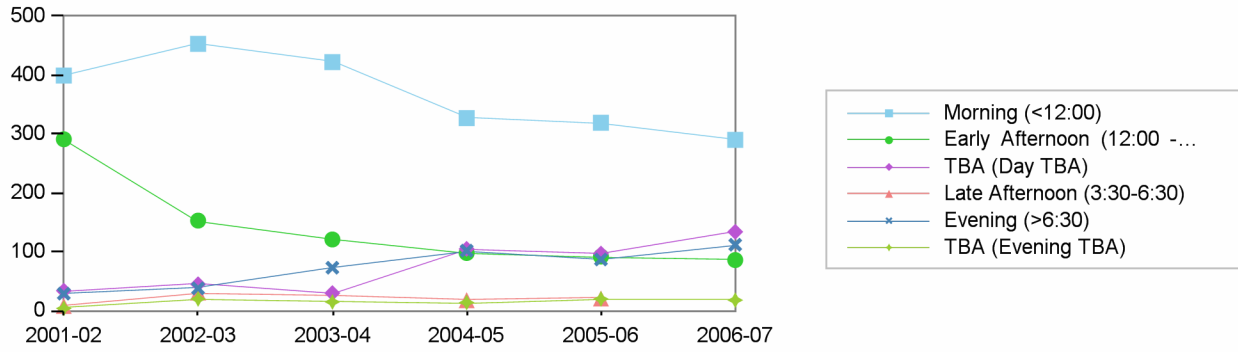
**Los Angeles City College  
Comprehensive Program Review 2008**

**Theater Arts Department  
Section IIa. Department Overview – Response to Demand: Enrollment**

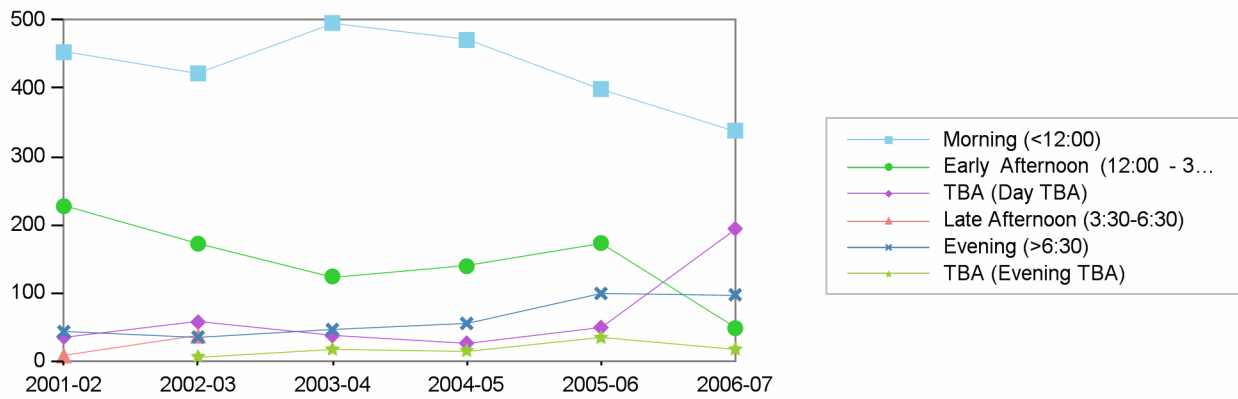


	2001-02	2002-03	2003-04	2004-05	2005-06	2006-07
Fall	766	729	720	706	754	694
Spring	765	740	661	664	636	640

Spring Enrollment by Time of Day



Fall Enrollment by Time of Day

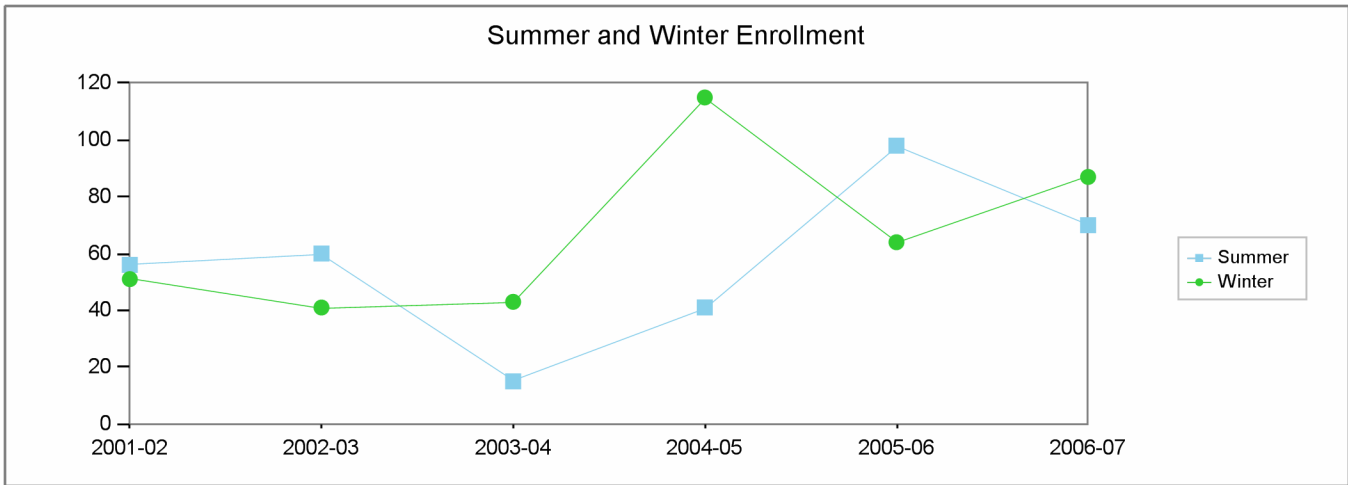


Morning (<12:00)    Early Afternoon (12:00 - 3:30)    TBA (Day TBA)    Late Afternoon (3:30-6:30)    Evening (>6:30)    TBA (Evening TBA)

	Fall	Spring	Fall	Spring	Fall	Spring	Fall	Spring	Fall	Spring	Spring	Fall
2001-02	453	399	227	291	35	34	8	8	43	29	4	
2002-03	422	453	172	153	57	45	37	31	35	38	20	6
2003-04	496	422	124	121	37	30			46	73	15	17
2004-05	471	327	139	98	26	105		18	55	102	14	15
2005-06	399	319	173	92	49	97		21	99	87	20	34
2006-07	338	290	48	86	194	134			97	112	18	17

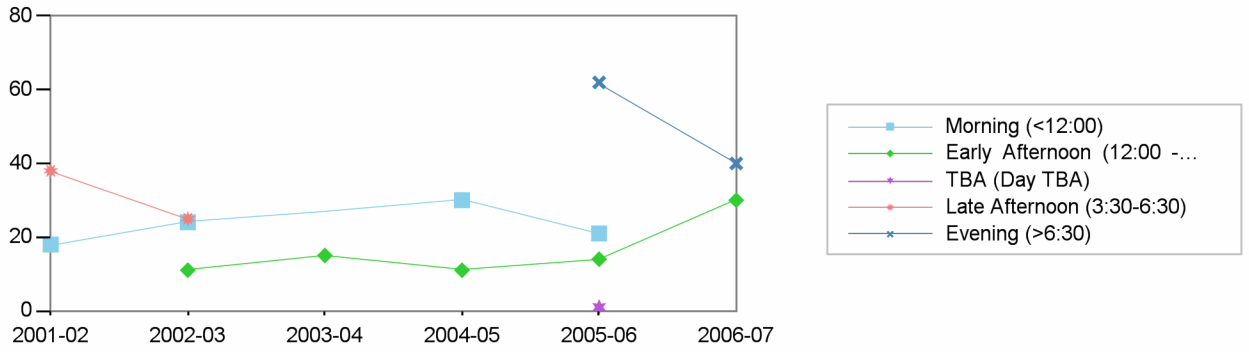
**Los Angeles City College  
Comprehensive Program Review 2008**

**Theater Arts Department  
Section IIa. Department Overview – Response to Demand: Enrollment**

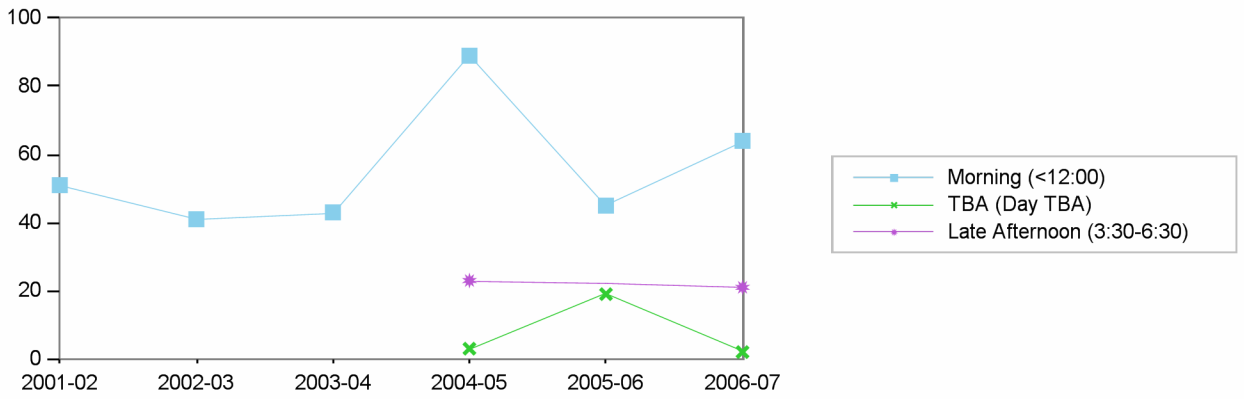


	2001-02	2002-03	2003-04	2004-05	2005-06	2006-07
Summer	56	60	15	41	98	70
Winter	51	41	43	115	64	87

Summer Enrollment by Time of Day



Winter Enrollment by Time of Day



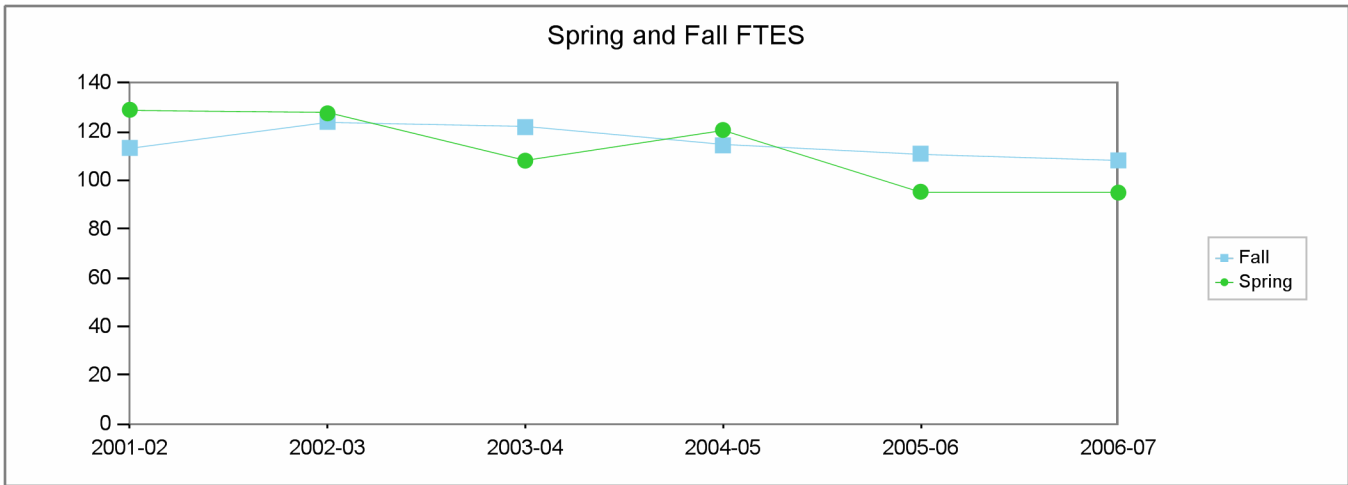
Morning (<12:00)    Early Afternoon (12:00 - 3:30)    TBA (Day TBA)    Late Afternoon (3:30-6:30)    Evening (>6:30)

Summer    Winter    Summer    Winter    Summer    Summer    Winter    Summer

2001-02	18	51				38		
2002-03	24	41	11			25		
2003-04		43	15					
2004-05	30	89	11	3			23	
2005-06	21	45	14	19	1			62
2006-07		64	30	2			21	40

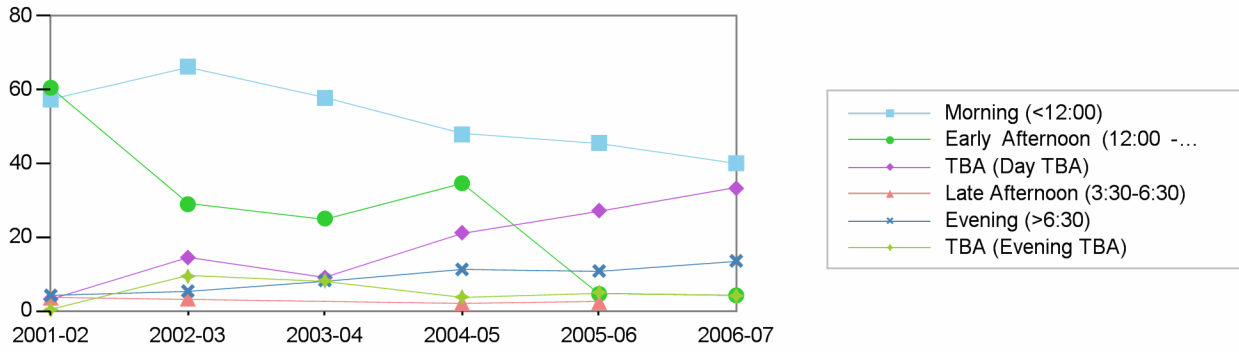
**Los Angeles City College**  
**Comprehensive Program Review 2008**

**Theater Arts Department**  
**Section IIa. Department Overview – Response to Demand: FTES**

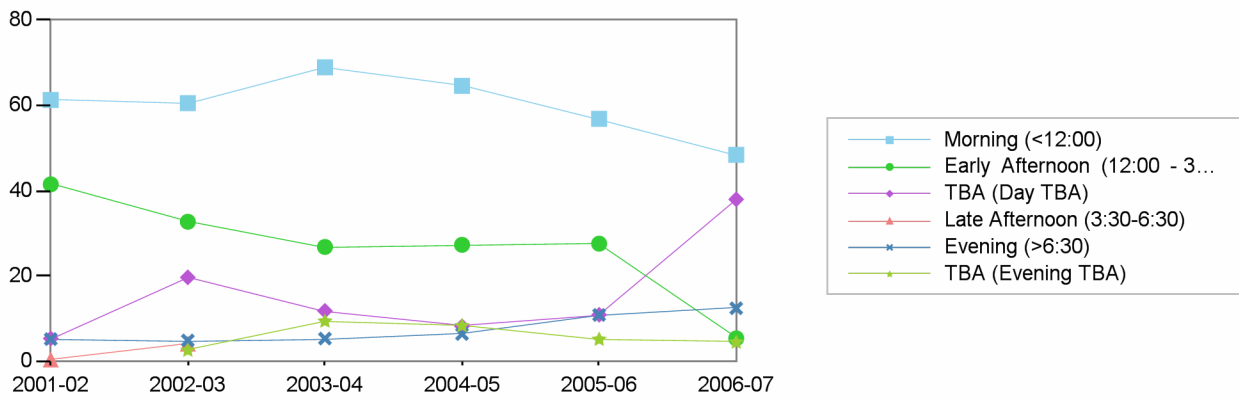


	2001-02	2002-03	2003-04	2004-05	2005-06	2006-07
Fall	113	124	122	114	111	108
Spring	129	128	108	121	95	95

Spring FTES by Time of Day



Fall FTES by Time of Day

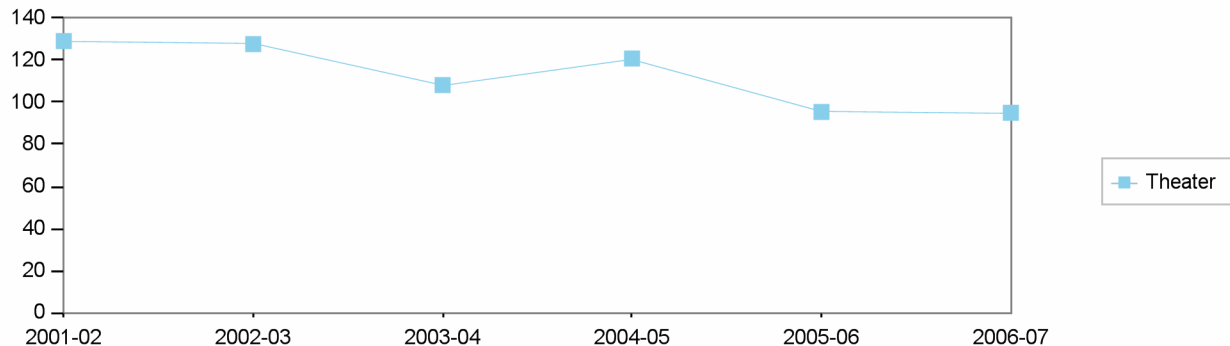


Morning (<12:00)    Early Afternoon (12:00 - 3:30)    TBA (Day TBA)    Late Afternoon (3:30-6:30)    Evening (>6:30)    TBA (Evening TBA)

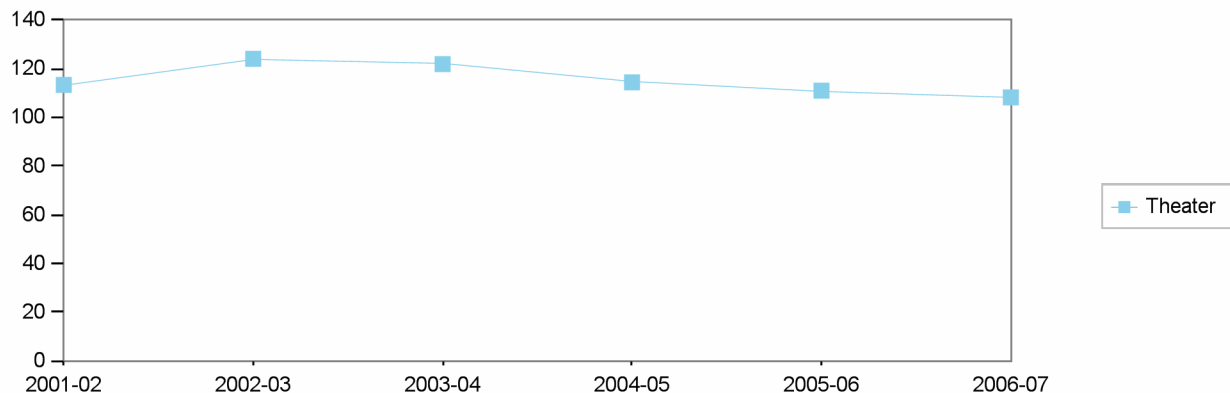
Fall    Spring    Fall    Spring    Fall    Spring    Fall    Spring    Fall    Spring    Spring    Fall

2001-02	61	57	41	61	5	3	0	4	5	4	0	
2002-03	61	66	33	29	20	14	4	3	5	5	9	2
2003-04	69	58	27	25	12	9			5	8	8	9
2004-05	65	48	27	35	8	21		2	6	11	4	8
2005-06	57	46	28	5	11	27		2	11	11	5	5
2006-07	48	40	5	4	38	33			12	14	4	4

Spring FTES by Discipline



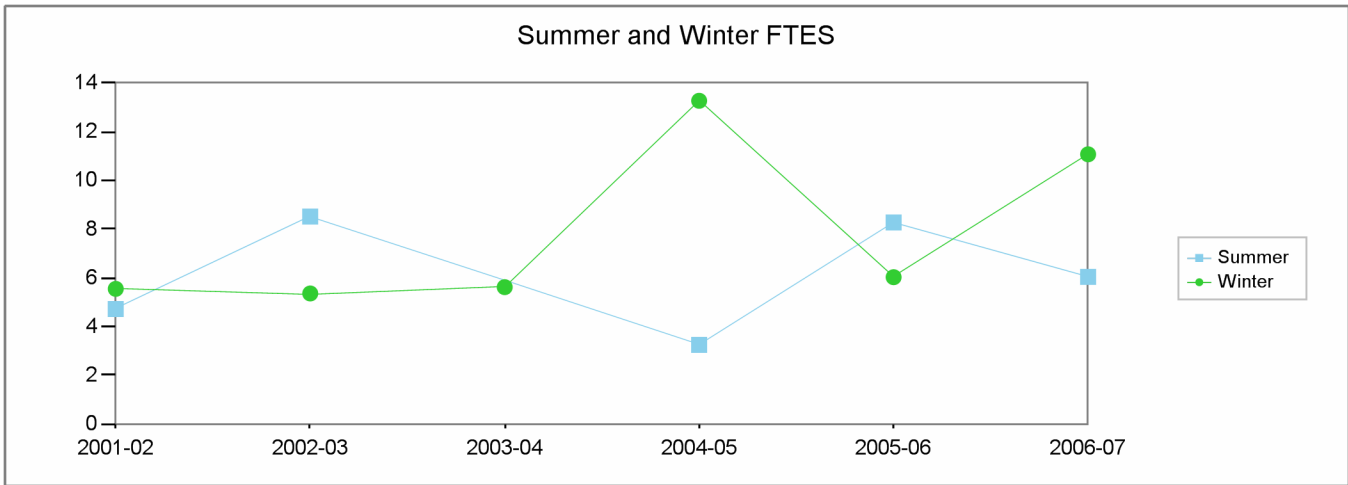
Fall FTES by Discipline



		2001-02	2002-03	2003-04	2004-05	2005-06	2006-07
Fall	Theater	113	124	122	114	111	108
Spring	Theater	129	128	108	121	95	95

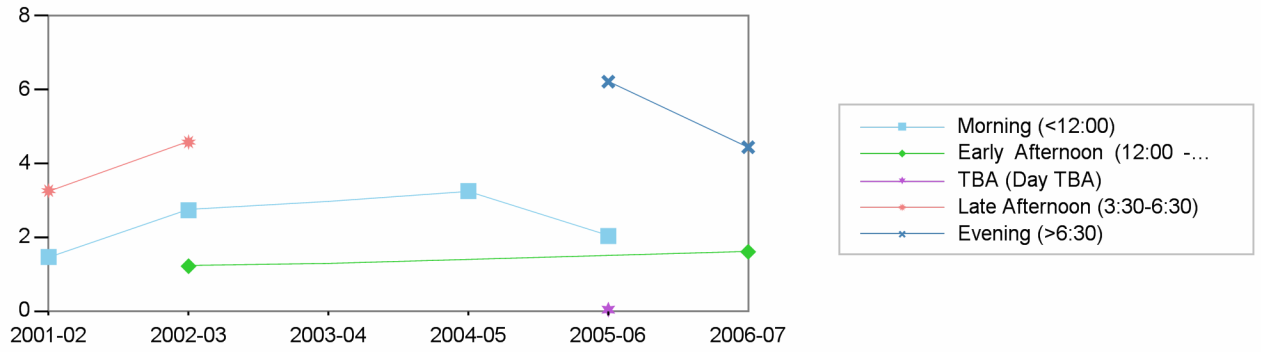
**Los Angeles City College  
Comprehensive Program Review 2008**

**Theater Arts Department  
Section IIa. Department Overview – Response to Demand: FTES**

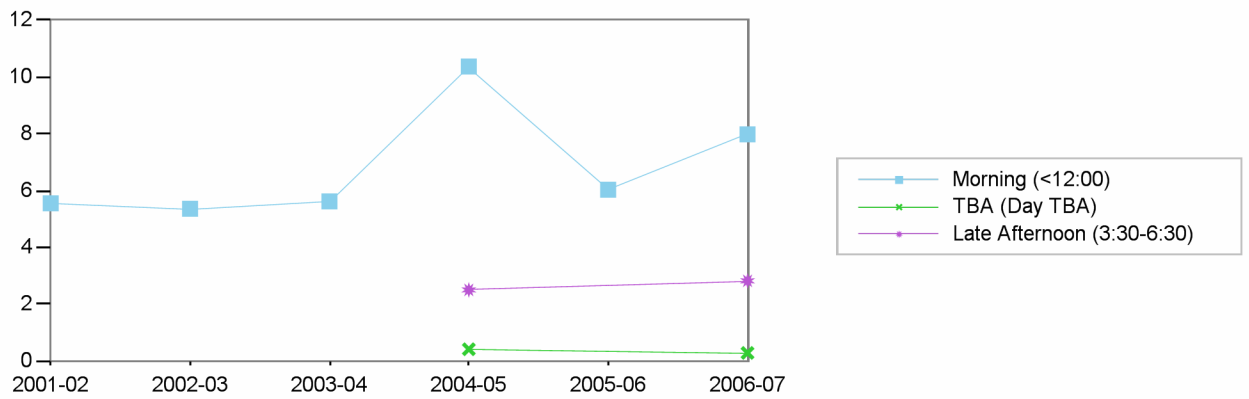


	2001-02	2002-03	2003-04	2004-05	2005-06	2006-07
Summer	5	9	6	3	8	6
Winter	6	5	6	13	6	11

Summer FTES by Time of Day



Winter FTES by Time of Day

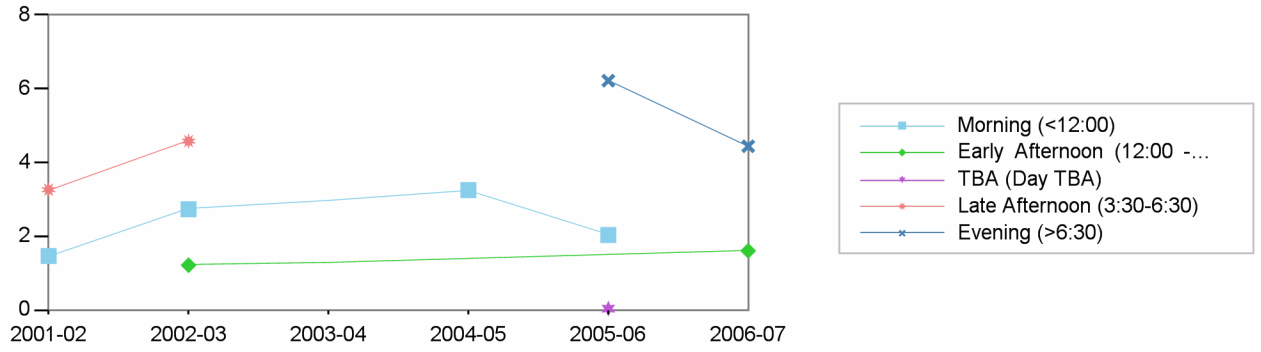


Morning (<12:00)    Early Afternoon (12:00 - 3:30)    TBA (Day TBA)    Late Afternoon (3:30-6:30)    Evening (>6:30)

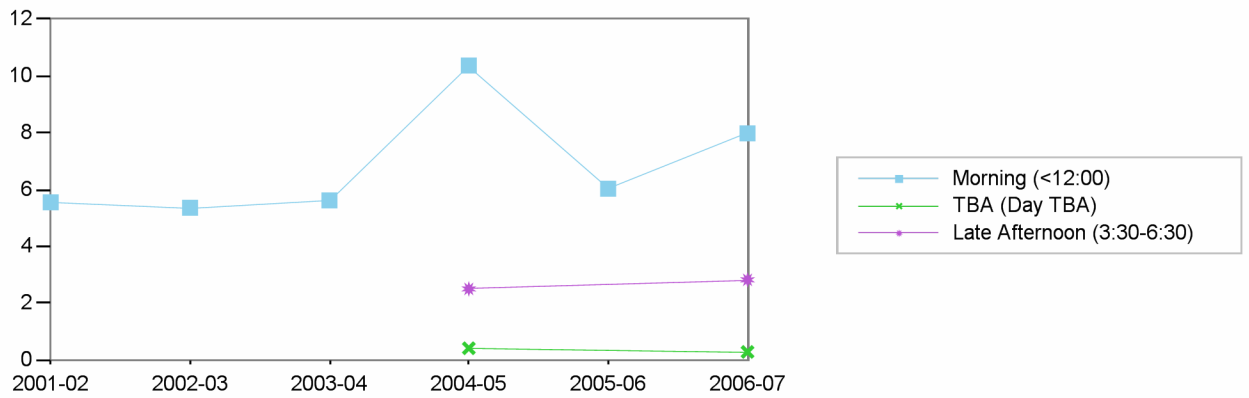
Summer    Winter    Summer    Winter    Summer    Summer    Winter    Summer

2001-02	1	6				3		
2002-03	3	5	1			5		
2003-04		6						
2004-05	3	10		0			3	
2005-06	2	6			0			6
2006-07		8	2	0			3	4

Summer FTES by Time of Day



Winter FTES by Time of Day

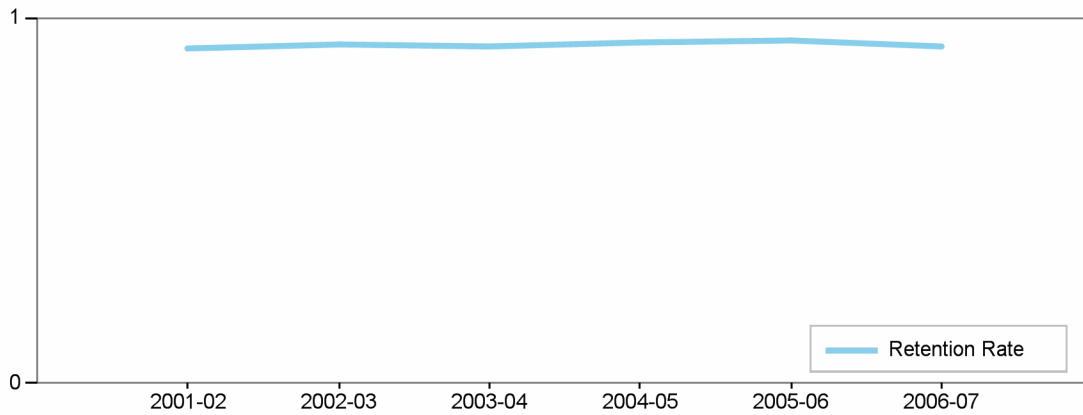


		2001-02	2002-03	2003-04	2004-05	2005-06	2006-07
Summer	Theater	5	9		3	8	6
Winter	Theater	6	5	6	13	6	11

**Los Angeles City College**  
**Comprehensive Program Review 2008**

**Theater Arts Department**  
**Section IIc. Department Overview – Student Achievements**

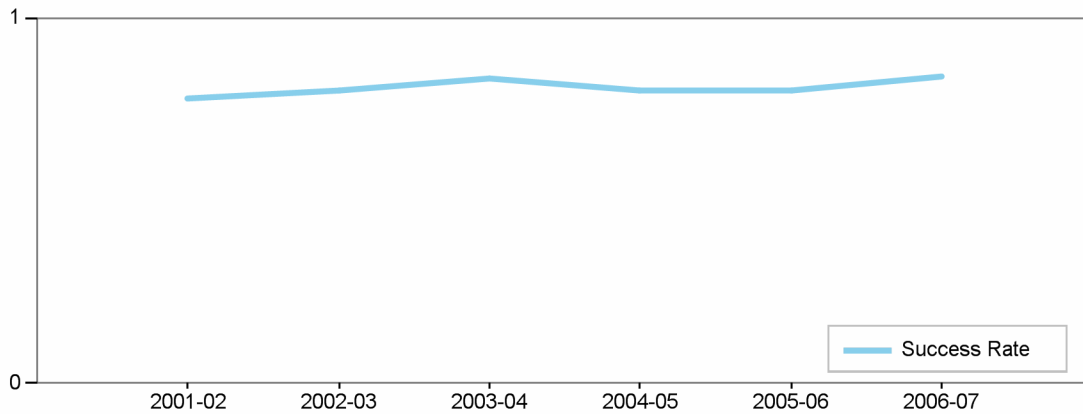
Department's Retention Rate



Retention Rate=  
 Numerator: Number of enrollments with A,B,C,D,F,CR,NC,I  
 Denominator: Number of enrollments with A,B,C,D,F,CR,NC,W,I

<b>Retention Rate</b>	2001-02	2002-03	2003-04	2004-05	2005-06	2006-07
Theater Arts	91 %	93 %	92 %	93 %	93 %	92 %

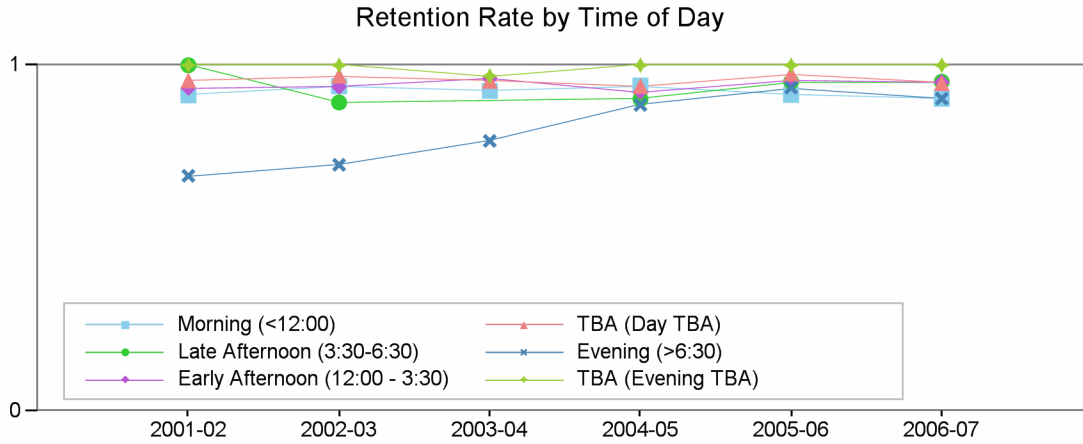
Department's Success Rate



Success Rate =  
 Numerator: Number of enrollments with A,B,C,CR  
 Denominator: Number of enrollments with A,B,C,D,F,CR,NC,W,I

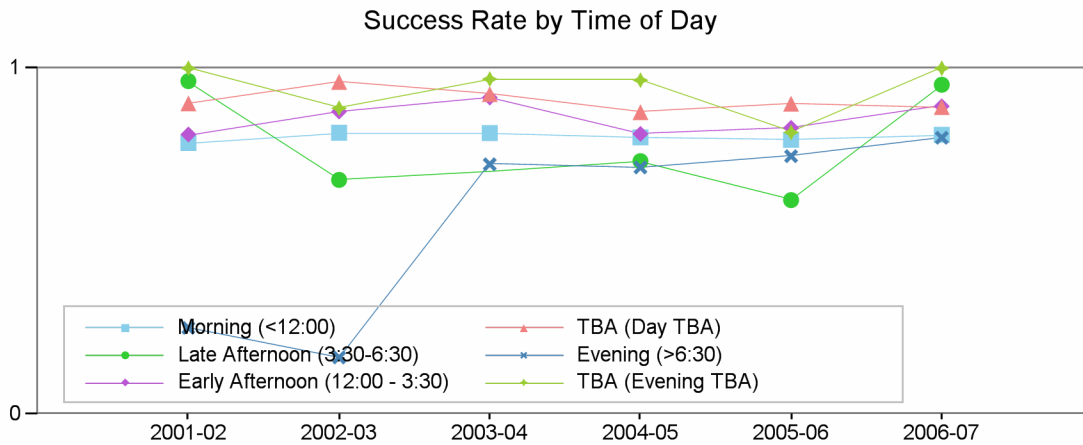
<b>Success Rate</b>	2001-02	2002-03	2003-04	2004-05	2005-06	2006-07
Theater Arts	78 %	80 %	83 %	80 %	80 %	84 %

## Department Success and Retention Rates by Time of Day



### Retention Rate

	2001-02	2002-03	2003-04	2004-05	2005-06	2006-07
Morning (<12:00)	91 %	94 %	93 %	94 %	91 %	90 %
Late Afternoon (3:30-6:30)	100 %	89 %	NaN	90 %	95 %	95 %
Early Afternoon (12:00 - 3:30)	93 %	94 %	96 %	92 %	95 %	95 %
TBA (Day TBA)	96 %	97 %	96 %	94 %	98 %	95 %
Evening (>6:30)	68 %	71 %	78 %	89 %	94 %	90 %
TBA (Evening TBA)	100 %	100 %	97 %	100 %	100 %	100 %

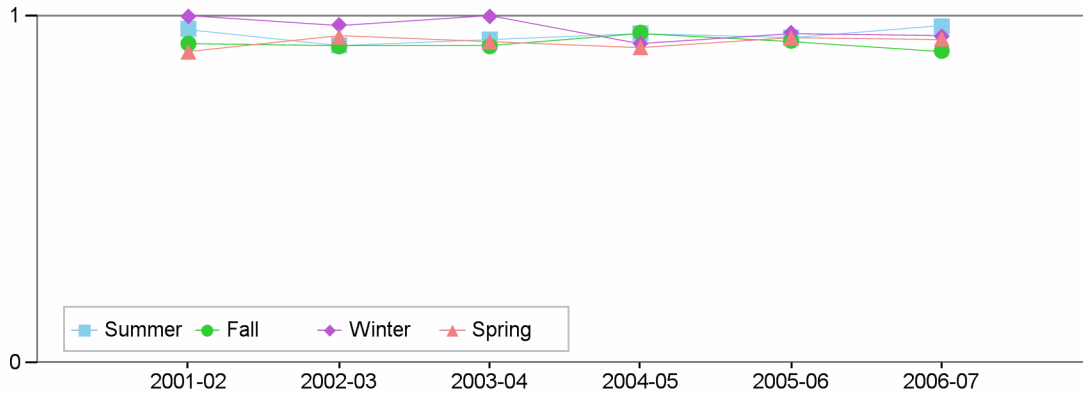


### Success Rate

	2001-02	2002-03	2003-04	2004-05	2005-06	2006-07
Morning (<12:00)	78 %	81 %	81 %	80 %	79 %	81 %
Late Afternoon (3:30-6:30)	96 %	68 %	NaN	73 %	62 %	95 %
Early Afternoon (12:00 - 3:30)	81 %	88 %	92 %	81 %	83 %	89 %
TBA (Day TBA)	90 %	96 %	93 %	87 %	90 %	89 %
Evening (>6:30)	25 %	16 %	72 %	71 %	75 %	80 %
TBA (Evening TBA)	100 %	88 %	97 %	97 %	81 %	100 %

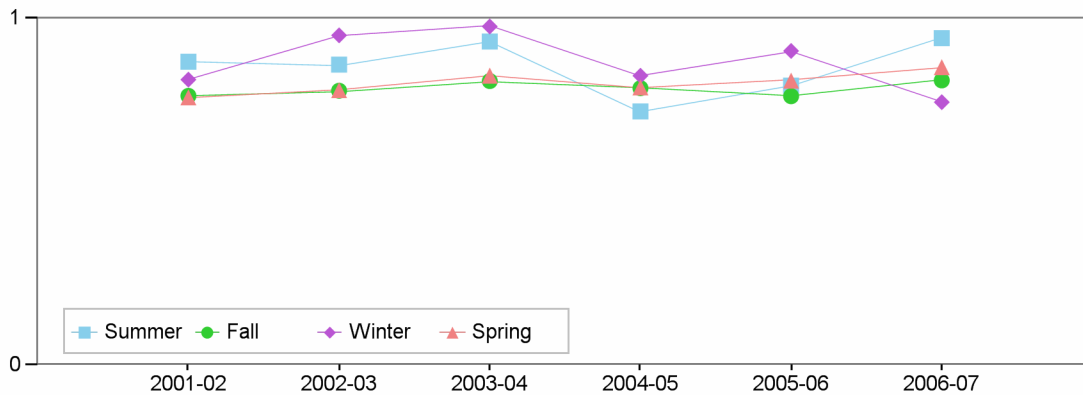
## Department Success and Retention Rates by Term

### Retention Rate by Term



Retention Rate	2001-02	2002-03	2003-04	2004-05	2005-06	2006-07
Summer	96 %	92 %	93 %	95 %	94 %	97 %
Fall	92 %	91 %	91 %	95 %	93 %	90 %
Winter	100 %	98 %	100 %	92 %	95 %	94 %
Spring	90 %	94 %	93 %	91 %	94 %	94 %

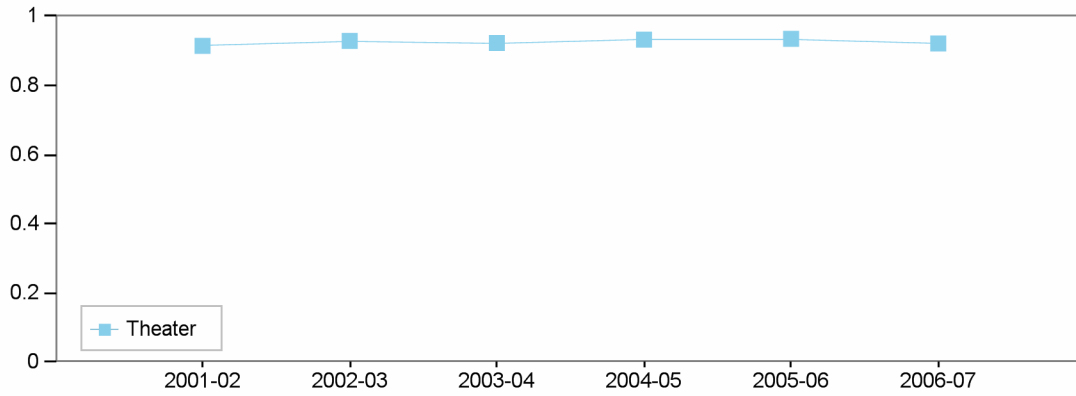
### Success Rate by Term



Success Rate	2001-02	2002-03	2003-04	2004-05	2005-06	2006-07
Summer	88 %	87 %	93 %	73 %	81 %	94 %
Fall	78 %	79 %	82 %	80 %	78 %	82 %
Winter	82 %	95 %	98 %	83 %	91 %	76 %
Spring	77 %	79 %	84 %	80 %	82 %	86 %

## Department Success and Retention Rates by Discipline

### Retention Rate by Discipline



#### Retention Rate

	2001-02	2002-03	2003-04	2004-05	2005-06	2006-07
Theater	91 %	93 %	92 %	93 %	93 %	92 %

### Success Rate by Discipline



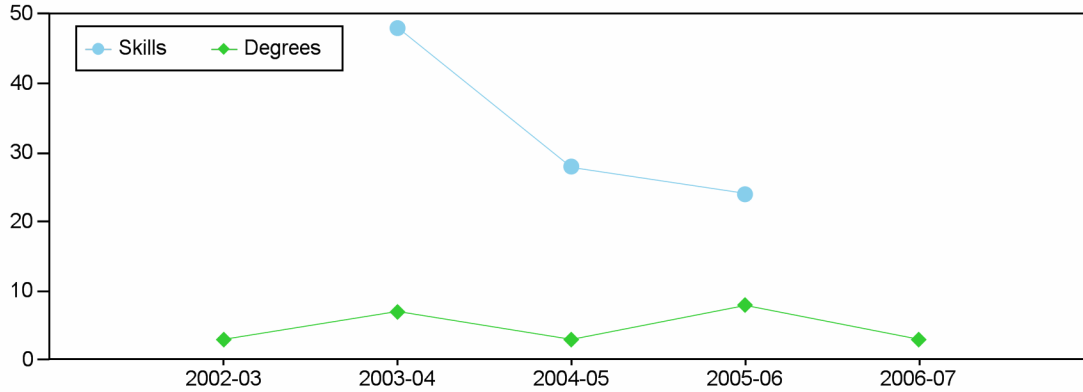
#### Success Rate

	2001-02	2002-03	2003-04	2004-05	2005-06	2006-07
Theater	78 %	80 %	83 %	80 %	80 %	84 %

---

**Los Angeles City College**  
**Comprehensive Program Review 2008**  
**Theater Arts Department**  
**Section IIc. Department Overview – Student Achievements**

Department's Degrees and Certificates



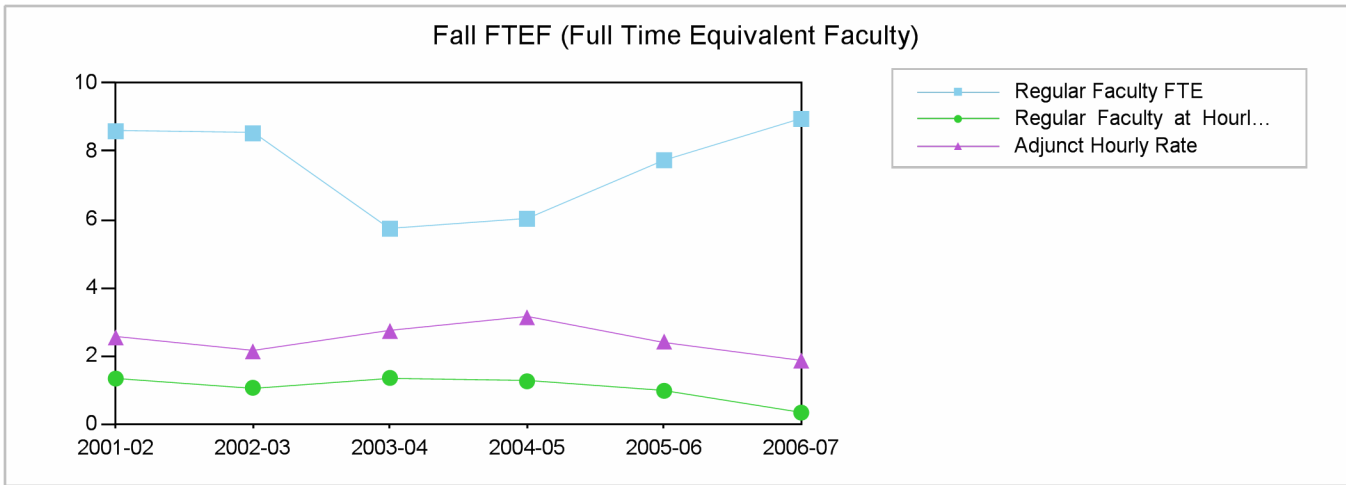
	2002-03	2003-04	2004-05	2005-06	2006-07
Degrees	3	7	3	8	3
Skills		48	28	24	
<b>Total</b>	<b>3</b>	<b>55</b>	<b>31</b>	<b>32</b>	<b>3</b>

**Department's Awards by Program**

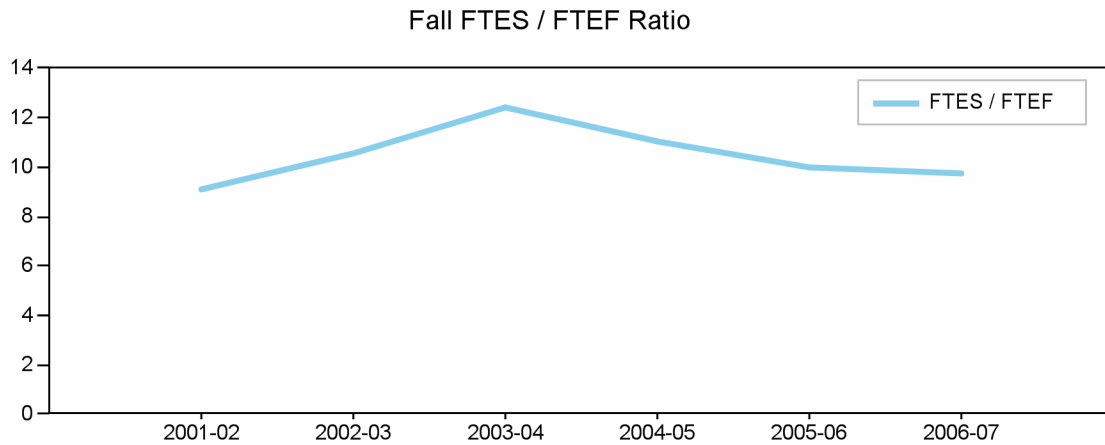
		2002-03	2003-04	2004-05	2005-06	2006-07
Degrees	Theater - General	2	4	1	6	1
	Theater Academy-Acting	1	3	2	2	1
	Theater Academy-Costume Const & Wardrobe Maint					1
	<b>Total</b>	<b>3</b>	<b>7</b>	<b>3</b>	<b>8</b>	<b>3</b>
Skills	Professional Actor Training-Level 1		33	21	21	
	Professional Costuming-Level 1		3	2	2	
	Professional Technical Theater-Level 1		12	5	1	
	<b>Total</b>		<b>48</b>	<b>28</b>	<b>24</b>	

**Los Angeles City College  
Comprehensive Program Review 2008**

**Theater Arts Department  
Section IId. Department Overview – FTEF**

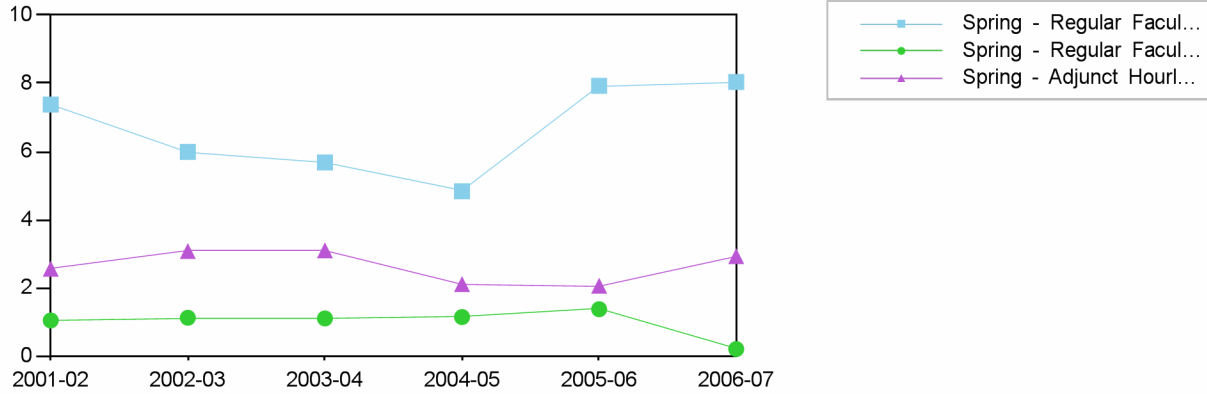


Fall	2001-02	2002-03	2003-04	2004-05	2005-06	2006-07
Regular Faculty FTE	8.59	8.53	5.73	6.02	7.74	8.95
Regular Faculty at Hourly Rate	1.33	1.06	1.35	1.25	0.97	0.33
Adjunct Hourly Rate	2.54	2.13	2.73	3.13	2.42	1.86
Total	12.46	11.72	9.81	10.4	11.13	11.14



Fall	2001-02	2002-03	2003-04	2004-05	2005-06	2006-07
Total FTEF	12.46	11.72	9.81	10.4	11.13	11.14
Total FTES	113.44	124.14	121.99	114.49	111.03	108.32
FTES / FTEF	9.1	10.6	12.4	11.0	10.0	9.7

Spring FTEF (Full Time Equivalent Faculty)



Spring

**2001-02 2002-03 2003-04 2004-05 2005-06 2006-07**

**Spring Spring Spring Spring Spring Spring**

Regular Faculty FTE

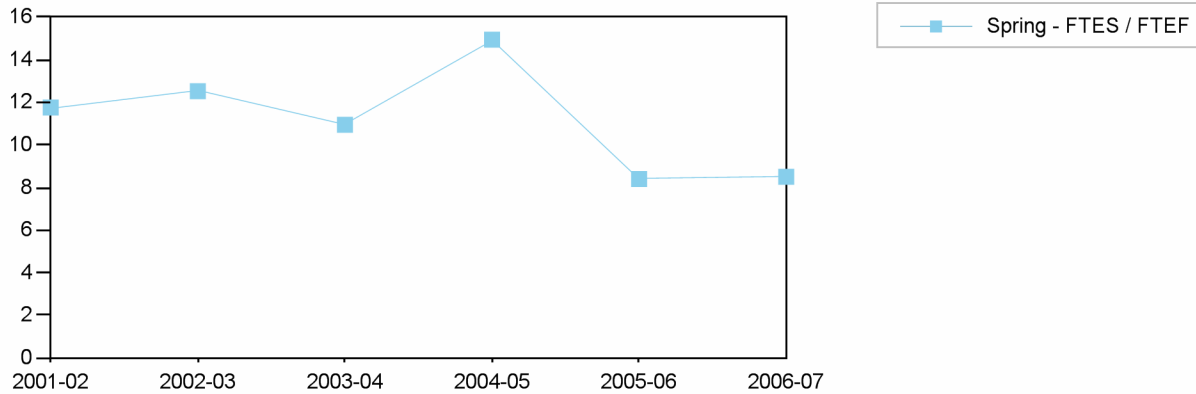
Regular Faculty FTE	7.38	5.99	5.68	4.83	7.93	8.04
Regular Faculty at Hourly Rate	1.04	1.12	1.1	1.14	1.37	0.2
Adjunct Hourly Rate	2.56	3.08	3.1	2.11	2.06	2.93
Total	10.98	10.19	9.88	8.08	11.36	11.17

Regular Faculty at Hourly Rate

Adjunct Hourly Rate

Total

Spring FTES / FTEF Ratio



Spring

**2001-02 2002-03 2003-04 2004-05 2005-06 2006-07**

**Spring Spring Spring Spring Spring Spring**

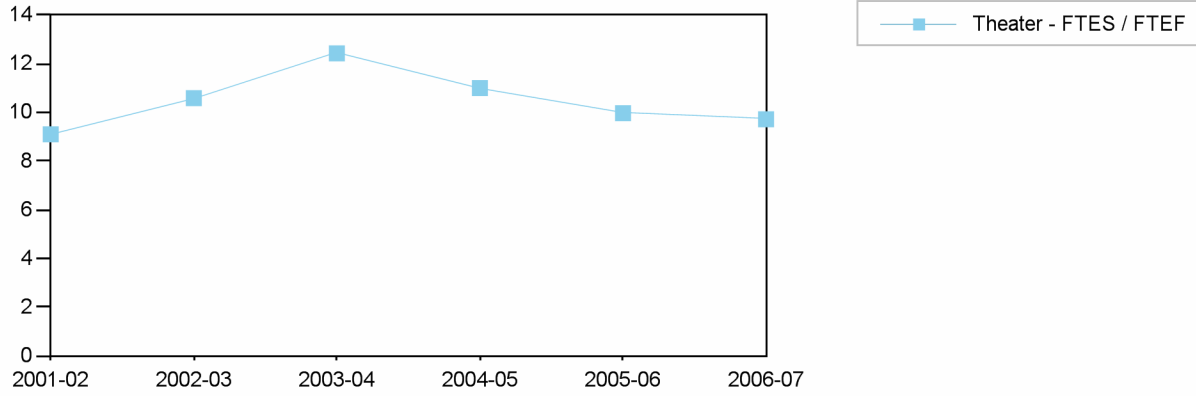
Total FTEF

Total FTES

FTES / FTEF

Total FTEF	10.98	10.19	9.88	8.08	11.36	11.17
Total FTES	129.1	127.66	108.19	120.8	95.42	95.05
FTES / FTEF	11.8	12.5	11.0	15.0	8.4	8.5

Fall FTES / FTEF Ratio by Discipline



**Theater**

	2001-02	2002-03	2003-04	2004-05	2005-06	2006-07
Total FTEF	12.46	11.72	9.81	10.4	11.13	11.14
Total FTES	113.44	124.14	121.99	114.49	111.03	108.32
FTES / FTEF	9.1	10.6	12.4	11.0	10.0	9.7