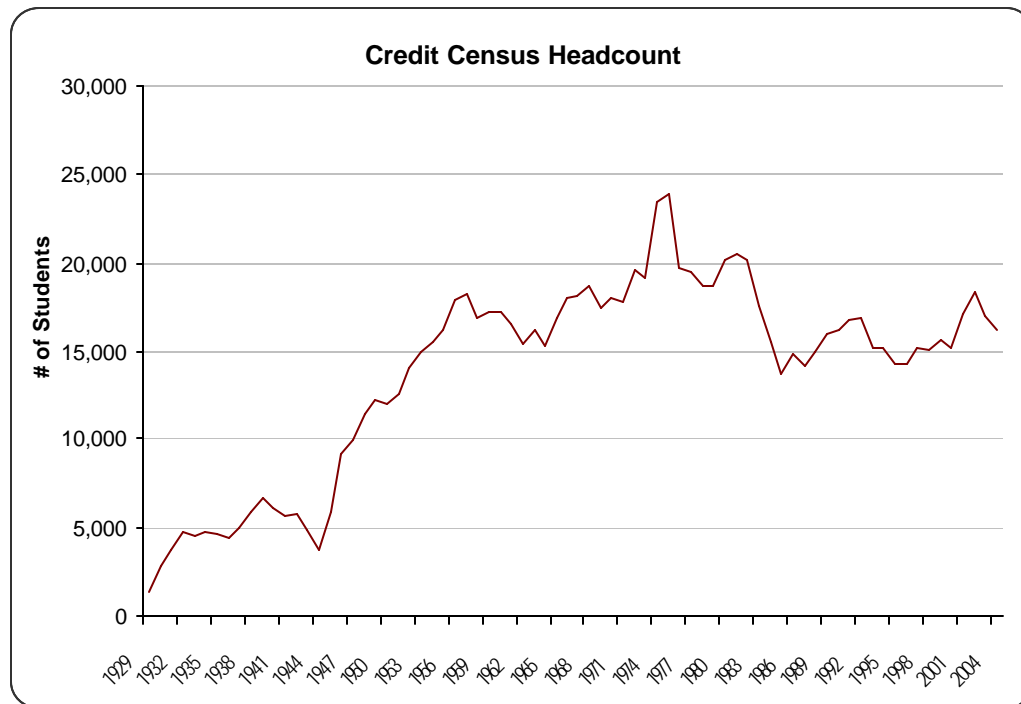


SECTION 1



STUDENT INFORMATION

Credit Census Headcount Fall 1929 - Fall 2004



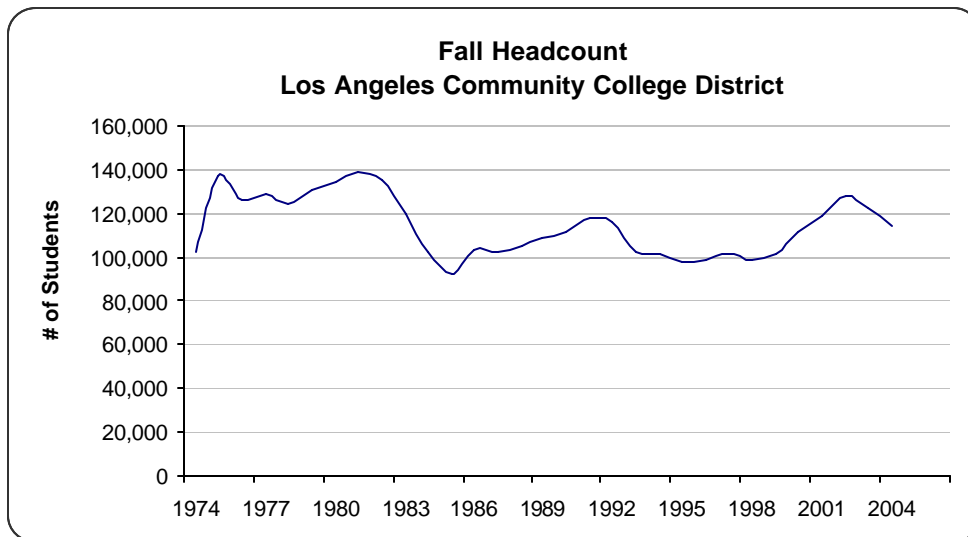
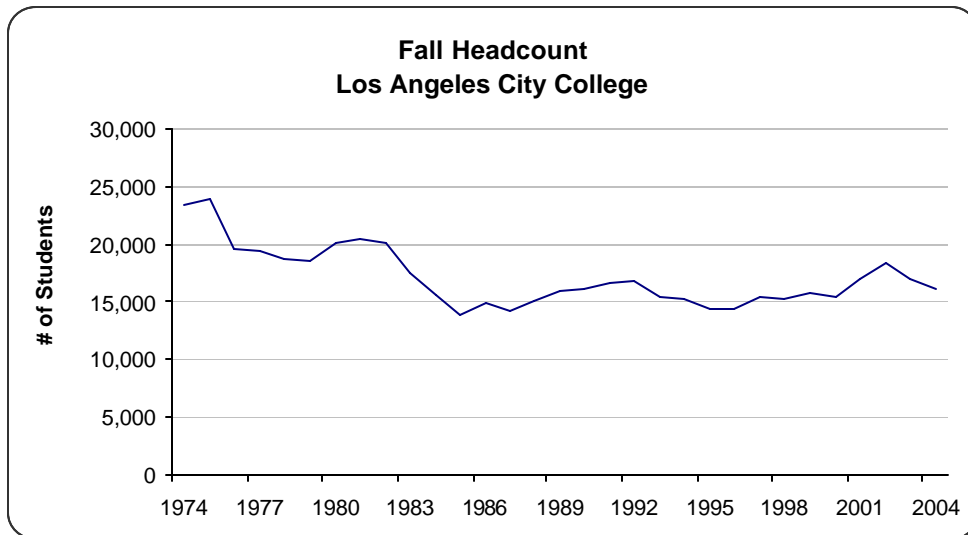
| Fall | # of Students | % Chg | Fall | # of Students | % Chg | Fall | # of Students | % Chg |
|------|---------------|--------|------|---------------|--------|------|---------------|--------|
| 1929 | 1,377 | | 1955 | 16,246 | 4.2% | 1981 | 20,492 | 1.6% |
| 1930 | 2,826 | 105.2% | 1956 | 17,980 | 10.7% | 1982 | 20,169 | -1.6% |
| 1931 | 3,712 | 31.4% | 1957 | 18,256 | 1.5% | 1983 | 17,568 | -12.9% |
| 1932 | 4,755 | 28.1% | 1958 | 16,929 | -7.3% | 1984 | 15,558 | -11.4% |
| 1933 | 4,497 | -5.4% | 1959 | 17,231 | 1.8% | 1985 | 13,743 | -11.7% |
| 1934 | 4,763 | 5.9% | 1960 | 17,278 | 0.3% | 1986 | 14,858 | 8.1% |
| 1935 | 4,645 | -2.5% | 1961 | 16,528 | -4.3% | 1987 | 14,224 | -4.3% |
| 1936 | 4,426 | -4.7% | 1962 | 15,484 | -6.3% | 1988 | 14,973 | 5.3% |
| 1937 | 5,008 | 13.1% | 1963 | 16,241 | 4.9% | 1989 | 16,036 | 7.1% |
| 1938 | 5,874 | 17.3% | 1964 | 15,306 | -5.8% | 1990 | 16,236 | 1.2% |
| 1939 | 6,603 | 12.4% | 1965 | 16,922 | 10.6% | 1991 | 16,810 | 3.5% |
| 1940 | 6,049 | -8.4% | 1966 | 18,023 | 6.5% | 1992 | 16,877 | 0.4% |
| 1941 | 5,627 | -7.0% | 1967 | 18,137 | 0.6% | 1993 | 15,270 | -9.5% |
| 1942 | 5,733 | 1.9% | 1968 | 18,745 | 3.4% | 1994 | 15,217 | -0.3% |
| 1943 | 4,794 | -16.4% | 1969 | 17,463 | -6.8% | 1995 | 14,346 | -5.7% |
| 1944 | 3,721 | -22.4% | 1970 | 18,069 | 3.5% | 1996 | 14,354 | 0.1% |
| 1945 | 5,885 | 58.2% | 1971 | 17,802 | -1.5% | 1997 | 15,275 | 6.4% |
| 1946 | 9,133 | 55.2% | 1972 | 19,622 | 10.2% | 1998 | 15,141 | -0.9% |
| 1947 | 9,900 | 8.4% | 1973 | 19,185 | -2.2% | 1999 | 15,685 | 3.6% |
| 1948 | 11,440 | 15.6% | 1974 | 23,514 | 22.6% | 2000 | 15,271 | -2.6% |
| 1949 | 12,150 | 6.2% | 1975 | 23,904 | 1.7% | 2001 | 17,095 | 11.9% |
| 1950 | 11,943 | -1.7% | 1976 | 19,727 | -17.5% | 2002 | 18,372 | 7.5% |
| 1951 | 12,568 | 5.2% | 1977 | 19,535 | -1.0% | 2003 | 16,984 | -7.6% |
| 1952 | 14,048 | 11.8% | 1978 | 18,776 | -3.9% | 2004 | 16,268 | -4.2% |
| 1953 | 15,016 | 6.9% | 1979 | 18,701 | -0.4% | | | |
| 1954 | 15,591 | 3.8% | 1980 | 20,174 | 7.9% | | | |

Note: Headcount is the number of individual students (unduplicated).

Source: The Los Angeles Community College District Office of Institutional Research and Information, <http://research.laccd.edu/research/>

Enrollment Trends

Credit Census Headcount Los Angeles City College and Los Angeles Community College District Fall 1974 - Fall 2004

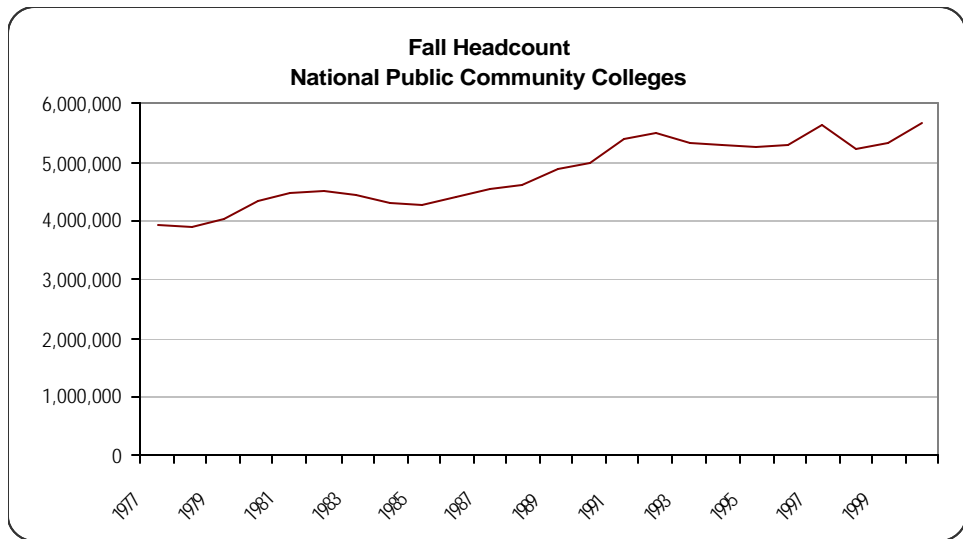
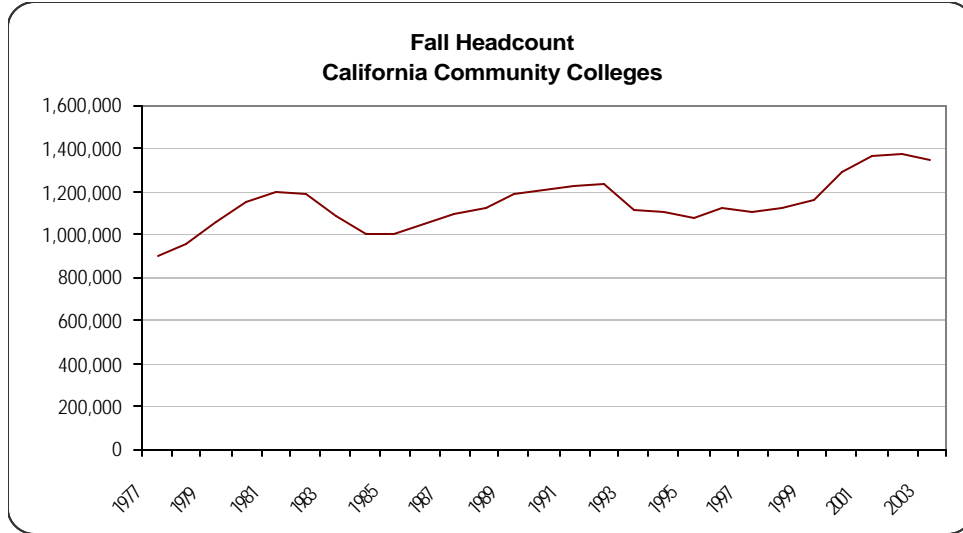


| Fall | City | District | Fall | City | District | Fall | City | District |
|------|--------|----------|------|--------|----------|------|--------|----------|
| 1973 | 19,185 | 108,922 | 1984 | 15,558 | 102,313 | 1995 | 14,346 | 98,104 |
| 1974 | 23,514 | 102,839 | 1985 | 13,743 | 93,026 | 1996 | 14,354 | 99,358 |
| 1975 | 23,904 | 137,031 | 1986 | 14,858 | 103,336 | 1997 | 15,275 | 101,647 |
| 1976 | 19,727 | 126,143 | 1987 | 14,224 | 102,912 | 1998 | 15,141 | 99,165 |
| 1977 | 19,535 | 129,296 | 1988 | 14,973 | 105,678 | 1999 | 15,685 | 102,075 |
| 1978 | 18,776 | 124,523 | 1989 | 16,036 | 108,880 | 2000 | 15,271 | 112,155 |
| 1979 | 18,701 | 130,896 | 1990 | 16,236 | 111,485 | 2001 | 17,095 | 119,433 |
| 1980 | 20,174 | 134,622 | 1991 | 16,810 | 117,994 | 2002 | 18,372 | 128,013 |
| 1981 | 20,492 | 139,168 | 1992 | 16,877 | 116,251 | 2003 | 16,984 | 122,441 |
| 1982 | 20,169 | 135,644 | 1993 | 15,270 | 102,800 | 2004 | 16,268 | 114,861 |
| 1983 | 17,568 | 119,569 | 1994 | 15,217 | 101,378 | | | |

Note: Headcount is the number of individual students (unduplicated).

Source: The Los Angeles Community College District Office of Institutional Research and Information, <http://research.laccd.edu/research/>

Fall Headcount State Community Colleges and National Community Colleges Fall 1977 - Fall 2003



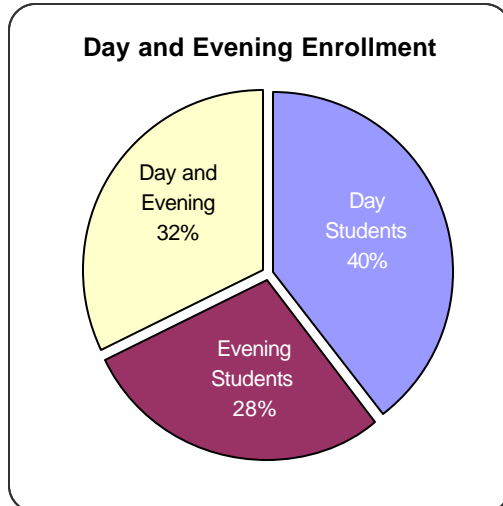
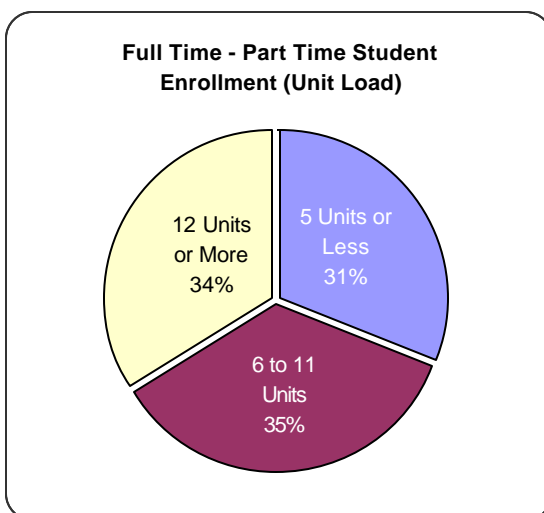
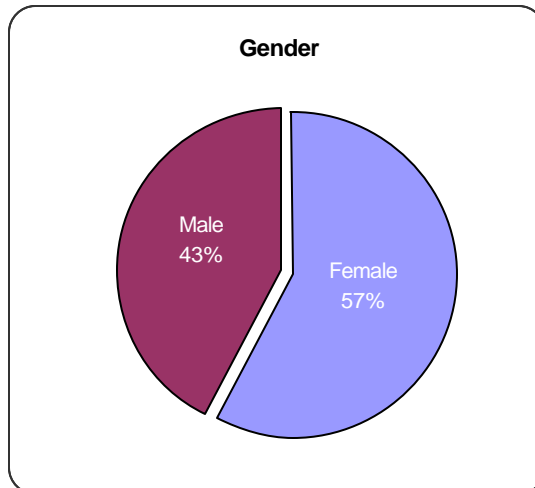
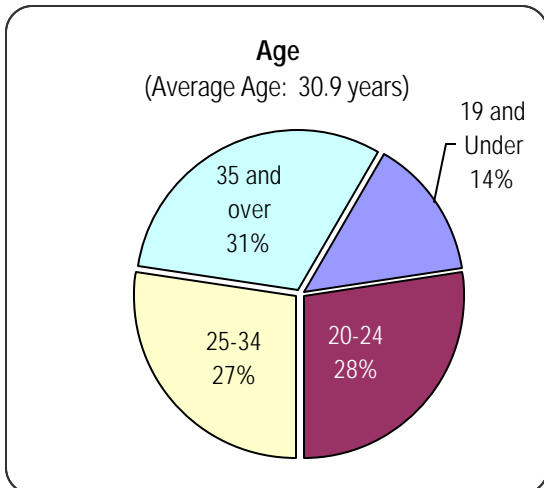
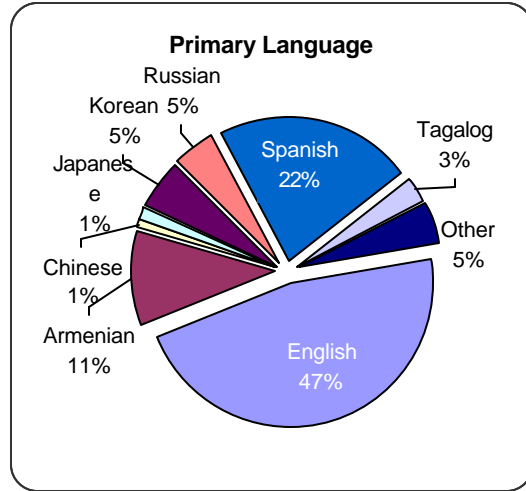
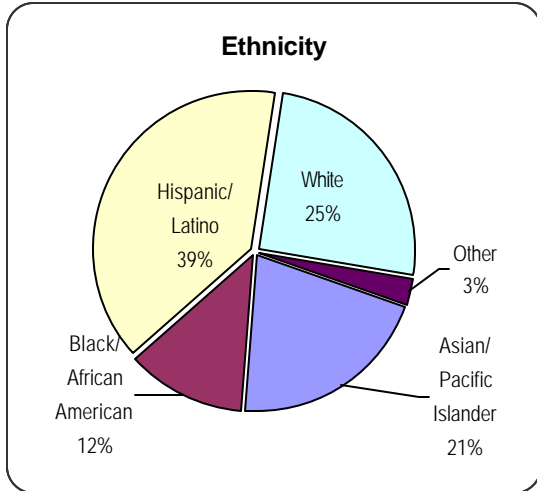
| Fall | CA CC | U.S. CC | Fall | CA CC | U.S. CC | Fall | CA CC | U.S. CC |
|------|-----------|-----------|------|-----------|-----------|------|-----------|-----------|
| 1977 | 901,763 | 3,901,769 | 1986 | 1,045,296 | 4,414,129 | 1995 | 1,075,906 | 5,272,056 |
| 1978 | 953,287 | 3,873,690 | 1987 | 1,088,308 | 4,541,054 | 1996 | 1,126,507 | 5,314,463 |
| 1979 | 1,062,185 | 4,056,810 | 1988 | 1,123,820 | 4,615,487 | 1997 | 1,102,552 | 5,605,569 |
| 1980 | 1,149,429 | 4,328,782 | 1989 | 1,184,209 | 4,883,660 | 1998 | 1,123,701 | 5,245,963 |
| 1981 | 1,197,685 | 4,480,708 | 1990 | 1,204,767 | 4,996,471 | 1999 | 1,159,952 | 5,339,449 |
| 1982 | 1,187,167 | 4,519,653 | 1991 | 1,217,539 | 5,404,815 | 2000 | 1,291,617 | 5,697,388 |
| 1983 | 1,083,323 | 4,459,330 | 1992 | 1,227,173 | 5,485,484 | 2001 | 1,371,542 | n/a |
| 1984 | 1,002,219 | 4,279,097 | 1993 | 1,116,110 | 5,337,328 | 2002 | 1,376,581 | n/a |
| 1985 | 1,005,439 | 4,269,733 | 1994 | 1,101,342 | 5,308,366 | 2003 | 1,342,615 | n/a |

Sources: California Postsecondary Education Commission (CPEC) online data:
<http://www.cpec.ca.gov/OnLineData/OnLineData.asp>
 and Digest of Education Statistics, 2003, Chapter 3. Postsecondary Education, National Center for Educational Statistics.

Student Profile

Student Profile Fall 2004

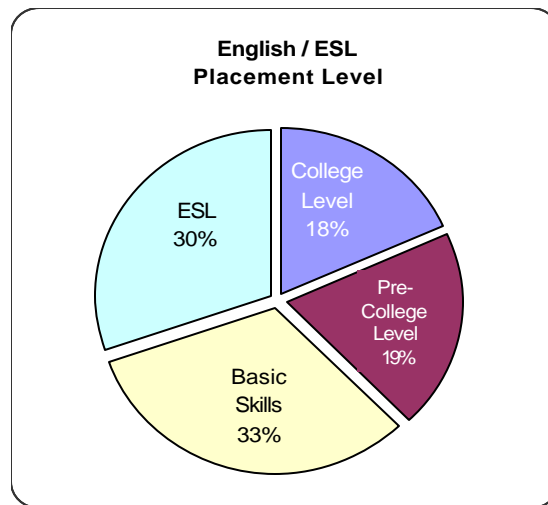
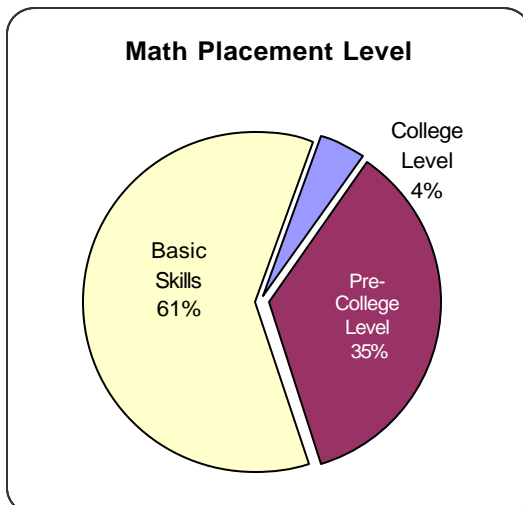
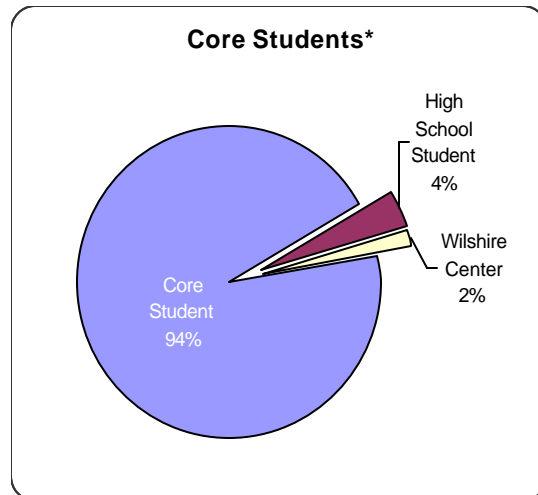
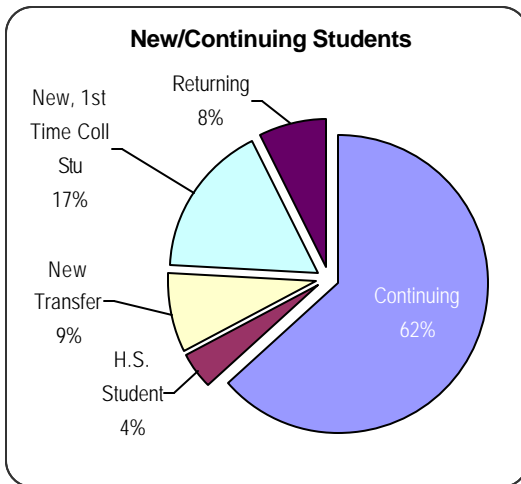
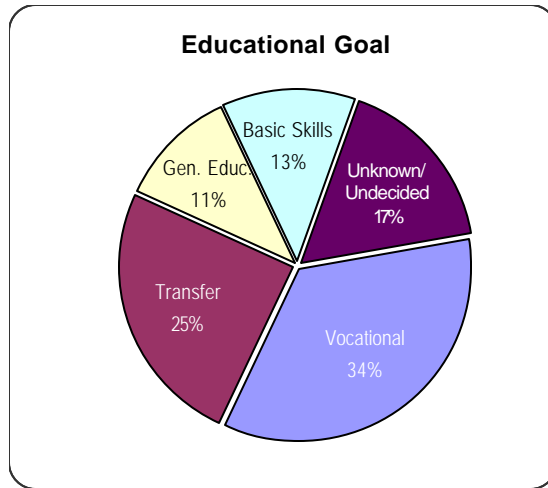
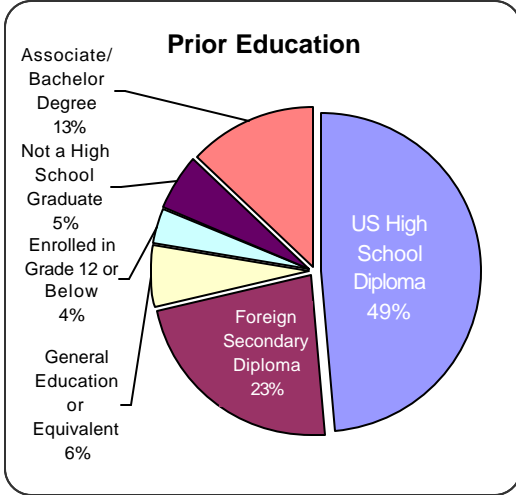
(Headcount: 16,268)



Source: The Los Angeles Community College District Student Information System (SIS)

**Student Profile
Fall 2004**

(Headcount: 16,268)

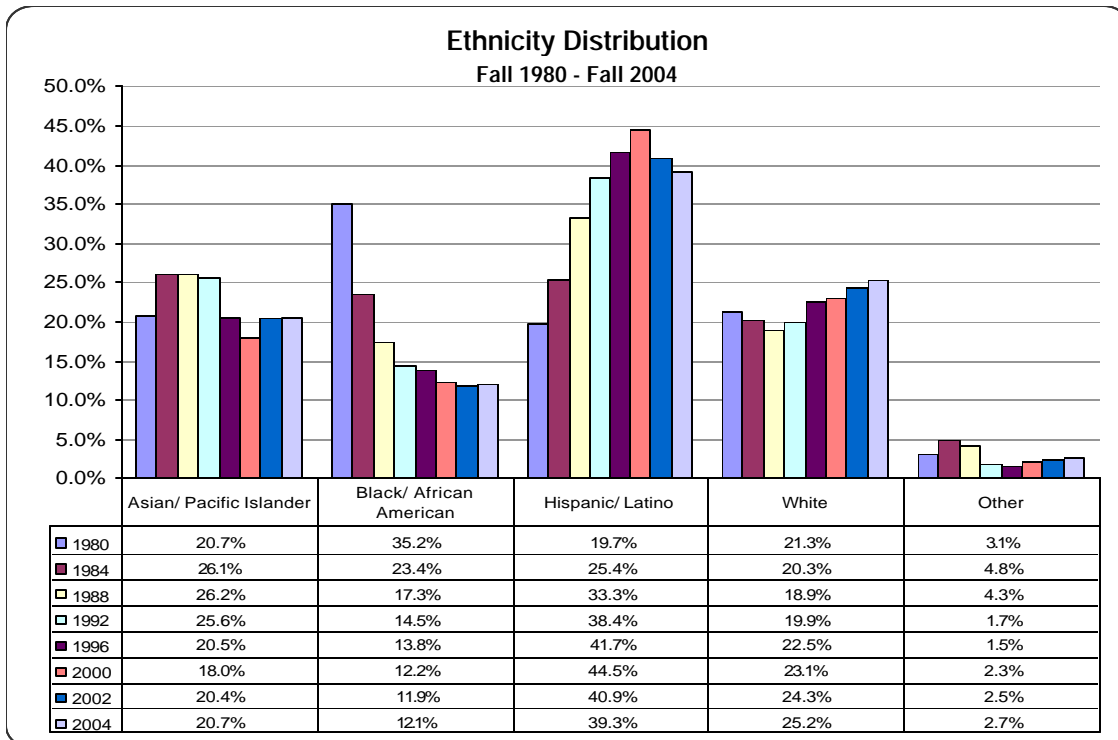


* Note: See page 22 for further detail on Core Students.

Source: The Los Angeles Community College District Student Information System (SIS)

Demographics

Ethnicity Distribution

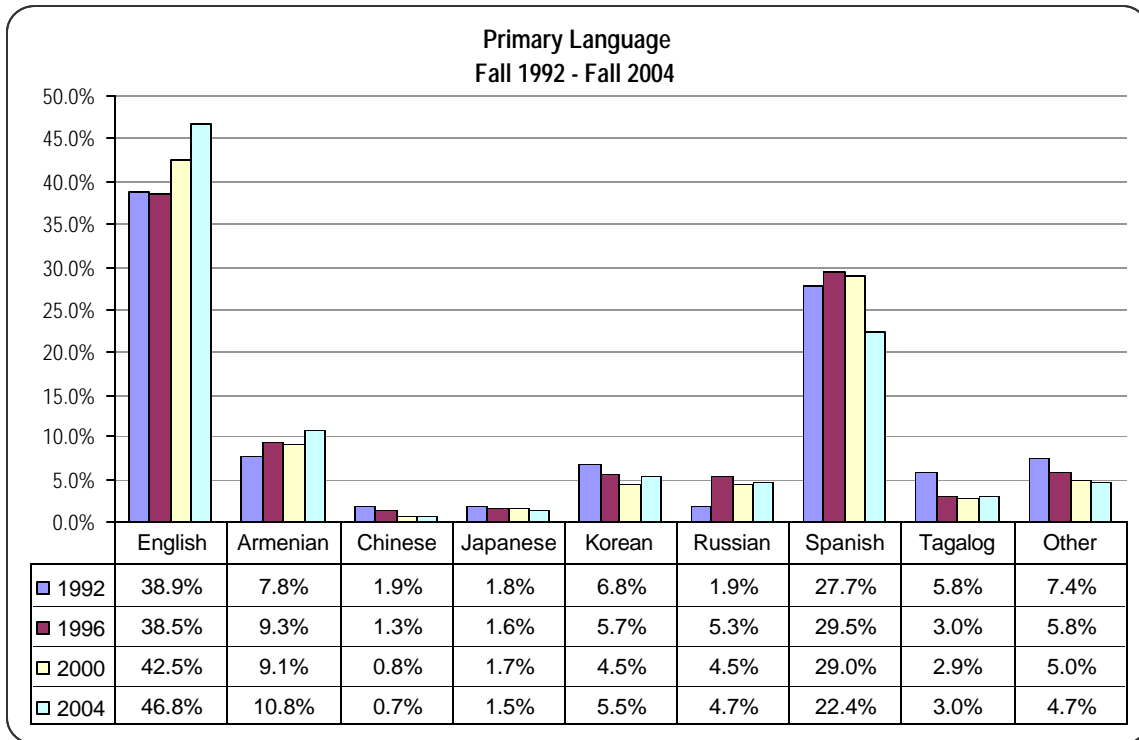


| Fall | Asian/ Pacific Islander | | Black/ African American | | Hispanic/ Latino | | White | | Other | | Total |
|------|-------------------------|-------|-------------------------|-------|------------------|-------|-------|-------|-------|------|--------|
| 1980 | 4,183 | 20.7% | 7,093 | 35.2% | 3,973 | 19.7% | 4,306 | 21.3% | 619 | 3.1% | 20,174 |
| 1981 | 4,449 | 21.7% | 6,352 | 31.0% | 4,388 | 21.4% | 4,445 | 21.7% | 858 | 4.2% | 20,492 |
| 1982 | 4,452 | 22.1% | 5,883 | 29.2% | 4,494 | 22.3% | 4,456 | 22.1% | 884 | 4.4% | 20,169 |
| 1983 | 3,976 | 22.6% | 4,893 | 27.9% | 4,159 | 23.7% | 3,704 | 21.1% | 835 | 4.8% | 17,568 |
| 1984 | 4,056 | 26.1% | 3,647 | 23.4% | 3,951 | 25.4% | 3,151 | 20.3% | 754 | 4.8% | 15,558 |
| 1985 | 3,742 | 27.2% | 2,872 | 20.9% | 3,678 | 26.8% | 2,752 | 20.0% | 699 | 5.1% | 13,743 |
| 1986 | 3,922 | 26.4% | 2,895 | 19.5% | 4,361 | 29.4% | 3,012 | 20.3% | 667 | 4.5% | 14,858 |
| 1987 | 3,796 | 26.7% | 2,661 | 18.7% | 4,340 | 30.5% | 2,747 | 19.3% | 681 | 4.8% | 14,224 |
| 1988 | 3,921 | 26.2% | 2,595 | 17.3% | 4,988 | 33.3% | 2,830 | 18.9% | 639 | 4.3% | 14,973 |
| 1989 | 4,049 | 25.3% | 2,584 | 16.1% | 5,802 | 36.2% | 2,982 | 18.6% | 618 | 3.9% | 16,035 |
| 1990 | 4,028 | 24.8% | 2,476 | 15.3% | 6,217 | 38.3% | 3,111 | 19.2% | 404 | 2.5% | 16,236 |
| 1991 | 4,183 | 24.9% | 2,494 | 14.8% | 6,515 | 38.8% | 3,307 | 19.7% | 311 | 1.9% | 16,810 |
| 1992 | 4,316 | 25.6% | 2,444 | 14.5% | 6,478 | 38.4% | 3,360 | 19.9% | 279 | 1.7% | 16,877 |
| 1993 | 3,633 | 23.8% | 2,212 | 14.5% | 5,983 | 39.2% | 3,191 | 20.9% | 251 | 1.6% | 15,270 |
| 1994 | 3,429 | 22.5% | 2,258 | 14.8% | 6,016 | 39.5% | 3,270 | 21.5% | 243 | 1.6% | 15,217 |
| 1995 | 3,082 | 21.5% | 2,097 | 14.6% | 5,843 | 40.7% | 3,090 | 21.5% | 235 | 1.6% | 14,346 |
| 1996 | 2,950 | 20.5% | 1,974 | 13.8% | 5,980 | 41.7% | 3,231 | 22.5% | 219 | 1.5% | 14,354 |
| 1997 | 3,056 | 20.0% | 2,035 | 13.3% | 6,520 | 42.7% | 3,386 | 22.2% | 278 | 1.8% | 15,275 |
| 1998 | 2,835 | 18.7% | 1,935 | 12.8% | 6,772 | 44.7% | 3,307 | 21.8% | 292 | 1.9% | 15,141 |
| 1999 | 2,823 | 18.0% | 1,911 | 12.2% | 7,051 | 45.0% | 3,557 | 22.7% | 342 | 2.2% | 15,685 |
| 2000 | 2,753 | 18.0% | 1,860 | 12.2% | 6,790 | 44.5% | 3,522 | 23.1% | 347 | 2.3% | 15,271 |
| 2001 | 3,130 | 19.0% | 1,997 | 12.1% | 7,062 | 43.0% | 3,846 | 23.4% | 405 | 2.5% | 16,440 |
| 2002 | 3,595 | 20.4% | 2,097 | 11.9% | 7,202 | 40.9% | 4,282 | 24.3% | 436 | 2.5% | 17,612 |
| 2003 | 3,310 | 20.3% | 1,928 | 11.8% | 6,617 | 40.6% | 4,047 | 24.8% | 395 | 2.4% | 16,297 |
| 2004 | 3,230 | 20.7% | 1,885 | 12.1% | 6,148 | 39.3% | 3,938 | 25.2% | 428 | 2.7% | 15,629 |

Note: Totals exclude unknown ethnicity.

Source: The Los Angeles Community College District Office Student Information System (SIS).

Primary Language Distribution



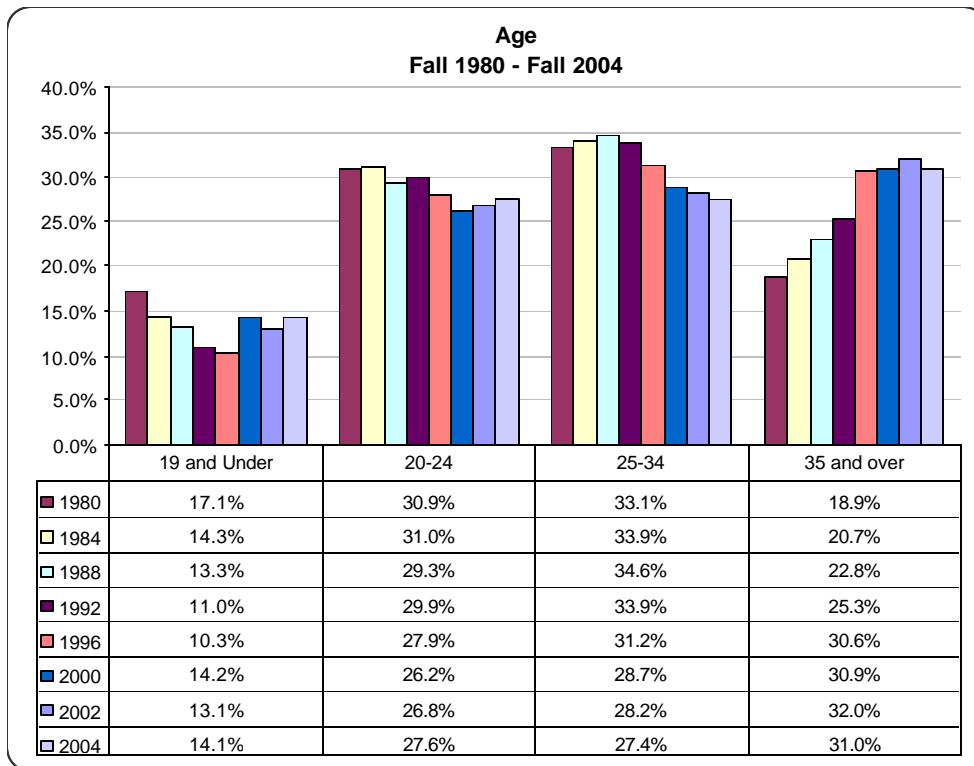
| Fall | English | Armenian | Chinese | Japanese | Korean | Russian | Spanish | Tagalog | Other | Total |
|------|-------------|-------------|----------|----------|------------|----------|-------------|----------|------------|--------|
| 1992 | 6,558 38.9% | 1,320 7.8% | 326 1.9% | 299 1.8% | 1,152 6.8% | 325 1.9% | 4,680 27.7% | 972 5.8% | 1,246 7.4% | 16,877 |
| 1993 | 5,789 37.9% | 1,444 9.5% | 296 1.9% | 284 1.9% | 993 6.5% | 380 2.5% | 4,261 27.9% | 748 4.9% | 1,074 7.0% | 15,270 |
| 1994 | 5,821 38.3% | 1,499 9.9% | 254 1.7% | 244 1.6% | 1,028 6.8% | 522 3.4% | 4,250 27.9% | 616 4.0% | 982 6.5% | 15,217 |
| 1995 | 5,590 39.0% | 1,326 9.2% | 208 1.4% | 241 1.7% | 880 6.1% | 653 4.5% | 4,064 28.3% | 470 3.3% | 913 6.4% | 14,346 |
| 1996 | 5,521 38.5% | 1,335 9.3% | 189 1.3% | 227 1.6% | 819 5.7% | 763 5.3% | 4,236 29.5% | 427 3.0% | 839 5.8% | 14,354 |
| 1997 | 5,826 38.1% | 1,399 9.2% | 181 1.2% | 214 1.4% | 895 5.9% | 851 5.6% | 4,559 29.8% | 472 3.1% | 877 5.7% | 15,275 |
| 1998 | 6,040 39.9% | 1,368 9.0% | 129 0.9% | 210 1.4% | 800 5.3% | 751 5.0% | 4,590 30.3% | 464 3.1% | 790 5.2% | 15,141 |
| 1999 | 6,468 41.2% | 1,443 9.2% | 115 0.7% | 226 1.4% | 727 4.6% | 787 5.0% | 4,646 29.6% | 442 2.8% | 830 5.3% | 15,685 |
| 2000 | 6,496 42.5% | 1,387 9.1% | 121 0.8% | 253 1.7% | 689 4.5% | 691 4.5% | 4,435 29.0% | 437 2.9% | 762 5.0% | 15,271 |
| 2001 | 7,396 43.8% | 1,577 9.3% | 140 0.8% | 283 1.7% | 813 4.8% | 797 4.7% | 4,551 26.9% | 479 2.8% | 869 5.1% | 16,905 |
| 2002 | 7,960 44.0% | 1,820 10.1% | 145 0.8% | 256 1.4% | 1,223 6.8% | 851 4.7% | 4,489 24.8% | 511 2.8% | 853 4.7% | 18,108 |
| 2003 | 7,453 44.3% | 1,770 10.5% | 115 0.7% | 246 1.5% | 982 5.8% | 816 4.8% | 4,105 24.4% | 500 3.0% | 839 5.0% | 16,826 |
| 2004 | 7,553 46.8% | 1,752 10.8% | 113 0.7% | 239 1.5% | 882 5.5% | 757 4.7% | 3,618 22.4% | 481 3.0% | 758 4.7% | 16,153 |

Note: Totals exclude unknown primary language. The question about Primary Language was added to the Application for Admission in Fall 1992.

Source: The Los Angeles Community College District Student Information System (SIS)

Demographics

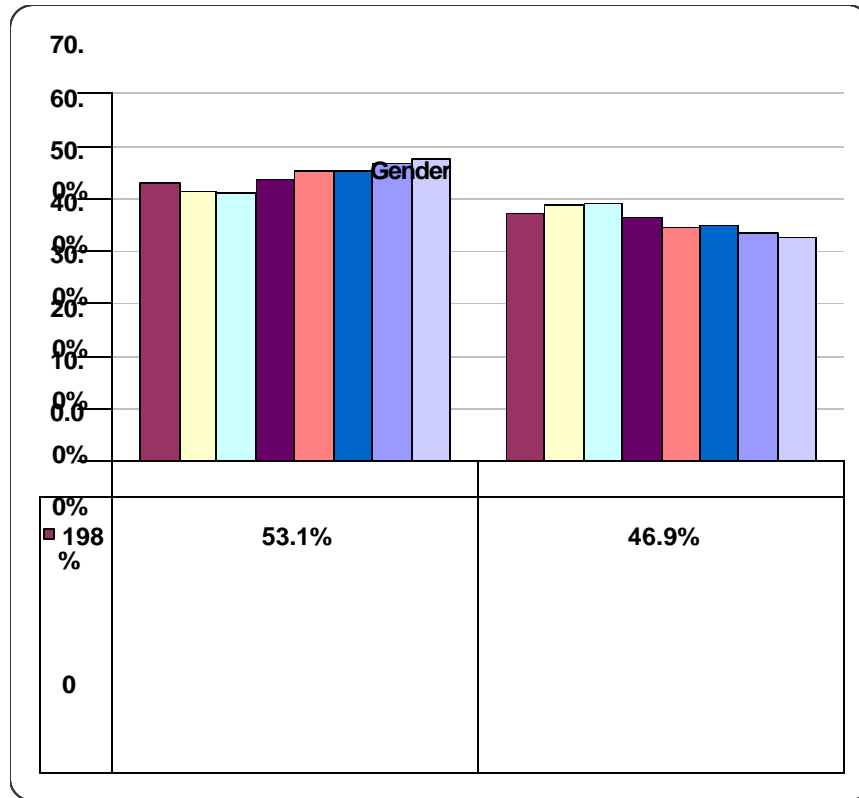
Age Distribution



| Fall | 19 and Under | | 20-24 | | 25-34 | | 35 and over | | Total |
|------|--------------|-------|-------|-------|-------|-------|-------------|-------|--------|
| 1980 | 3,448 | 17.1% | 6,227 | 30.9% | 6,684 | 33.1% | 3,815 | 18.9% | 20,174 |
| 1981 | 3,253 | 15.9% | 6,266 | 30.6% | 6,986 | 34.1% | 3,988 | 19.5% | 20,492 |
| 1982 | 3,233 | 16.0% | 6,155 | 30.5% | 6,834 | 33.9% | 3,947 | 19.6% | 20,169 |
| 1983 | 2,768 | 15.8% | 5,410 | 30.8% | 6,000 | 34.2% | 3,390 | 19.3% | 17,568 |
| 1984 | 2,221 | 14.3% | 4,829 | 31.0% | 5,282 | 33.9% | 3,226 | 20.7% | 15,558 |
| 1985 | 1,876 | 13.7% | 4,355 | 31.7% | 4,696 | 34.2% | 2,816 | 20.5% | 13,743 |
| 1986 | 1,986 | 13.4% | 4,570 | 30.8% | 5,147 | 34.6% | 3,155 | 21.2% | 14,858 |
| 1987 | 2,102 | 14.8% | 4,267 | 30.0% | 4,795 | 33.7% | 3,060 | 21.5% | 14,224 |
| 1988 | 1,985 | 13.3% | 4,392 | 29.3% | 5,176 | 34.6% | 3,420 | 22.8% | 14,973 |
| 1989 | 1,984 | 12.4% | 4,660 | 29.1% | 5,514 | 34.4% | 3,878 | 24.2% | 16,036 |
| 1990 | 1,925 | 11.9% | 4,713 | 29.0% | 5,579 | 34.4% | 4,020 | 24.8% | 16,236 |
| 1991 | 1,926 | 11.5% | 4,970 | 29.6% | 5,782 | 34.4% | 4,132 | 24.6% | 16,810 |
| 1992 | 1,849 | 11.0% | 5,043 | 29.9% | 5,714 | 33.9% | 4,271 | 25.3% | 16,877 |
| 1993 | 1,485 | 9.7% | 4,714 | 30.9% | 5,087 | 33.3% | 3,985 | 26.1% | 15,270 |
| 1994 | 1,586 | 10.4% | 4,595 | 30.2% | 4,808 | 31.6% | 4,228 | 27.8% | 15,217 |
| 1995 | 1,484 | 10.3% | 4,149 | 28.9% | 4,630 | 32.3% | 4,082 | 28.5% | 14,346 |
| 1996 | 1,474 | 10.3% | 4,008 | 27.9% | 4,474 | 31.2% | 4,398 | 30.6% | 14,354 |
| 1997 | 1,980 | 13.0% | 3,961 | 26.0% | 4,478 | 29.4% | 4,788 | 31.5% | 15,207 |
| 1998 | 2,186 | 14.4% | 3,926 | 25.9% | 4,367 | 28.8% | 4,662 | 30.8% | 15,141 |
| 1999 | 2,271 | 14.7% | 4,044 | 26.2% | 4,411 | 28.6% | 4,717 | 30.5% | 15,443 |
| 2000 | 2,169 | 14.2% | 4,003 | 26.2% | 4,376 | 28.7% | 4,723 | 30.9% | 15,271 |
| 2001 | 2,380 | 13.9% | 4,621 | 27.0% | 4,819 | 28.2% | 5,275 | 30.9% | 17,095 |
| 2002 | 2,405 | 13.1% | 4,921 | 26.8% | 5,176 | 28.2% | 5,872 | 32.0% | 18,374 |
| 2003 | 2,373 | 14.0% | 4,705 | 27.7% | 4,628 | 27.2% | 5,278 | 31.1% | 16,984 |
| 2004 | 2,292 | 14.1% | 4,490 | 27.6% | 4,451 | 27.4% | 5,035 | 31.0% | 16,268 |

Source: The Los Angeles Community College District Student Information System (SIS).

Gender Distribution

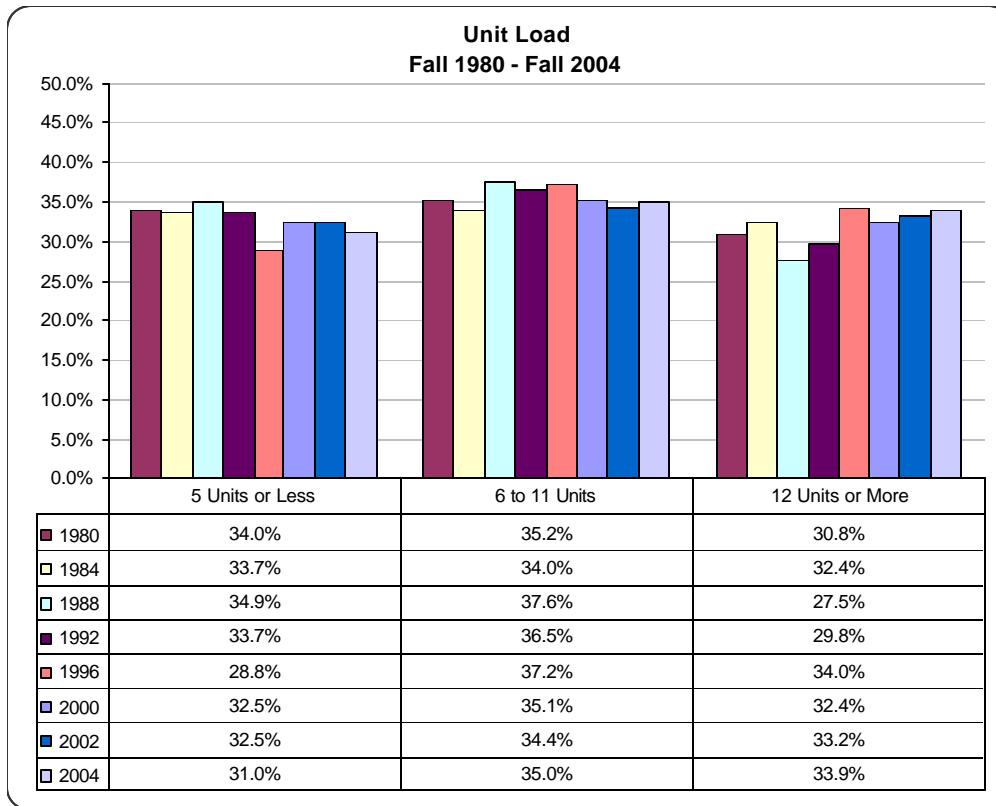


| Fall | Female | Male | Total |
|------|--------------|-------------|--------|
| 1980 | 10,703 53.1% | 9,471 46.9% | 20,174 |
| 1981 | 10,583 51.6% | 9,909 48.4% | 20,492 |
| 1982 | 10,367 51.4% | 9,802 48.6% | 20,169 |
| 1983 | 9,100 51.8% | 8,468 48.2% | 17,568 |
| 1984 | 7,997 51.4% | 7,561 48.6% | 15,558 |
| 1985 | 7,016 51.1% | 6,727 48.9% | 13,743 |
| 1986 | 7,507 50.5% | 7,351 49.5% | 14,858 |
| 1987 | 7,247 50.9% | 6,977 49.1% | 14,224 |
| 1988 | 7,638 51.0% | 7,335 49.0% | 14,973 |
| 1989 | 8,197 51.1% | 7,838 48.9% | 16,036 |
| 1990 | 8,495 52.3% | 7,741 47.7% | 16,236 |
| 1991 | 8,940 53.2% | 7,870 46.8% | 16,810 |
| 1992 | 9,048 53.6% | 7,829 46.4% | 16,877 |
| 1993 | 8,107 53.1% | 7,163 46.9% | 15,270 |
| 1994 | 8,199 53.9% | 7,018 46.1% | 15,217 |
| 1995 | 7,738 53.9% | 6,608 46.1% | 14,346 |
| 1996 | 7,957 55.4% | 6,397 44.6% | 14,354 |
| 1997 | 8,683 56.8% | 6,592 43.2% | 15,275 |
| 1998 | 8,485 56.0% | 6,656 44.0% | 15,141 |
| 1999 | 8,674 55.3% | 7,011 44.7% | 15,685 |
| 2000 | 8,445 55.3% | 6,826 44.7% | 15,271 |
| 2001 | 9,545 55.8% | 7,550 44.2% | 17,095 |
| 2002 | 10,378 56.5% | 7,996 43.5% | 18,374 |
| 2003 | 9,692 57.1% | 7,292 42.9% | 16,984 |
| 2004 | 9,322 57.5% | 6,894 42.5% | 16,216 |

Source: The Los Angeles Community College District Student Information System (SIS).

Enrollment Data

Unit Load Distribution

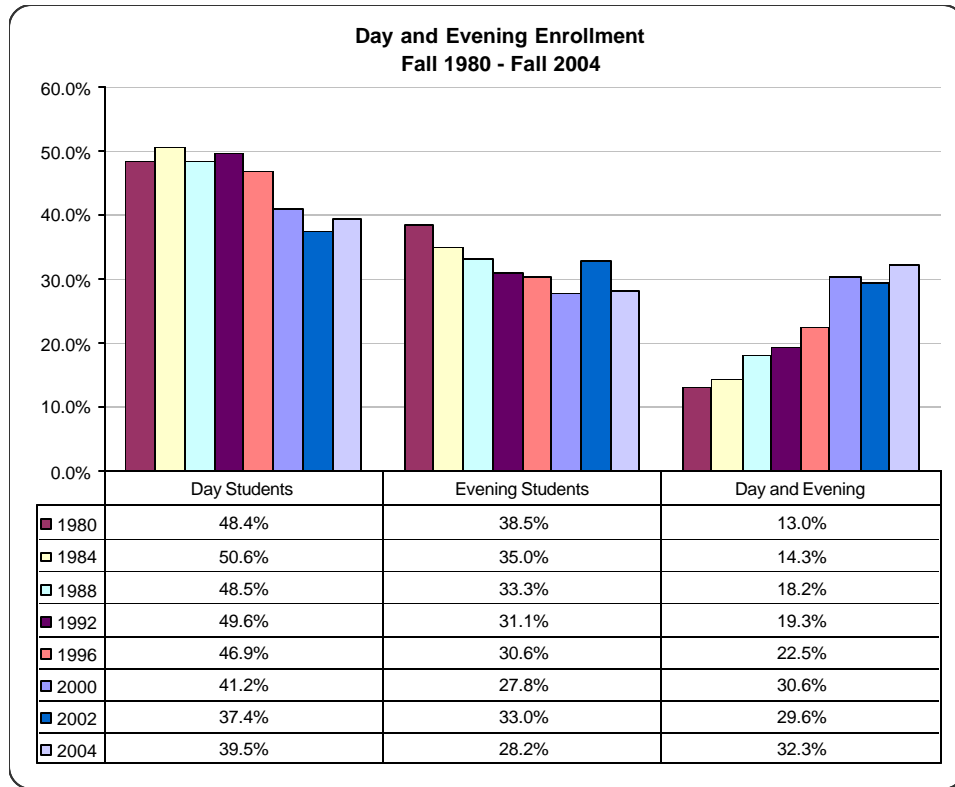


| Fall | 5 Units or Less | | 6 to 11 Units | | 12 Units or More | | Total |
|------|-----------------|-------|---------------|-------|------------------|-------|--------|
| 1980 | 6,851 | 34.0% | 7,111 | 35.2% | 6,212 | 30.8% | 20,174 |
| 1981 | 6,954 | 33.9% | 7,242 | 35.3% | 6,296 | 30.7% | 20,492 |
| 1982 | 6,874 | 34.1% | 7,228 | 35.8% | 6,067 | 30.1% | 20,169 |
| 1983 | 5,712 | 32.5% | 6,321 | 36.0% | 5,536 | 31.5% | 17,568 |
| 1984 | 5,236 | 33.7% | 5,283 | 34.0% | 5,039 | 32.4% | 15,558 |
| 1985 | 4,556 | 33.2% | 4,732 | 34.4% | 4,455 | 32.4% | 13,743 |
| 1986 | 5,166 | 34.8% | 5,352 | 36.0% | 4,340 | 29.2% | 14,858 |
| 1987 | 4,815 | 33.9% | 4,974 | 35.0% | 4,435 | 31.2% | 14,224 |
| 1988 | 5,228 | 34.9% | 5,627 | 37.6% | 4,118 | 27.5% | 14,973 |
| 1989 | 5,362 | 33.4% | 5,959 | 37.2% | 4,715 | 29.4% | 16,036 |
| 1990 | 5,574 | 34.3% | 5,951 | 36.7% | 4,711 | 29.0% | 16,236 |
| 1991 | 5,847 | 34.8% | 6,096 | 36.3% | 4,867 | 29.0% | 16,810 |
| 1992 | 5,684 | 33.7% | 6,159 | 36.5% | 5,034 | 29.8% | 16,877 |
| 1993 | 4,447 | 29.1% | 5,724 | 37.5% | 5,099 | 33.4% | 15,270 |
| 1994 | 4,499 | 29.6% | 5,536 | 36.4% | 5,182 | 34.1% | 15,217 |
| 1995 | 4,011 | 28.0% | 5,256 | 36.6% | 5,079 | 35.4% | 14,346 |
| 1996 | 4,136 | 28.8% | 5,333 | 37.2% | 4,886 | 34.0% | 14,354 |
| 1997 | 4,323 | 28.3% | 5,285 | 34.6% | 5,667 | 37.1% | 15,275 |
| 1998 | 4,473 | 29.5% | 5,435 | 35.9% | 5,233 | 34.6% | 15,141 |
| 1999 | 4,950 | 31.6% | 5,449 | 34.7% | 5,286 | 33.7% | 15,685 |
| 2000 | 4,963 | 32.5% | 5,367 | 35.1% | 4,941 | 32.4% | 15,271 |
| 2001 | 5,679 | 33.2% | 5,980 | 35.0% | 5,436 | 31.8% | 17,095 |
| 2002 | 5,964 | 32.5% | 6,311 | 34.4% | 6,097 | 33.2% | 18,372 |
| 2003 | 5,633 | 32.2% | 5,833 | 34.3% | 5,518 | 32.5% | 16,984 |
| 2004 | 5,051 | 31.0% | 5,696 | 35.0% | 5,521 | 33.9% | 16,268 |

Note: Student course load is the number of units in which a student is enrolled; used for determining full-time/part-time status.

Source: The Los Angeles Community College District Student Information System (SIS).

Day and Evening Enrollment Distribution

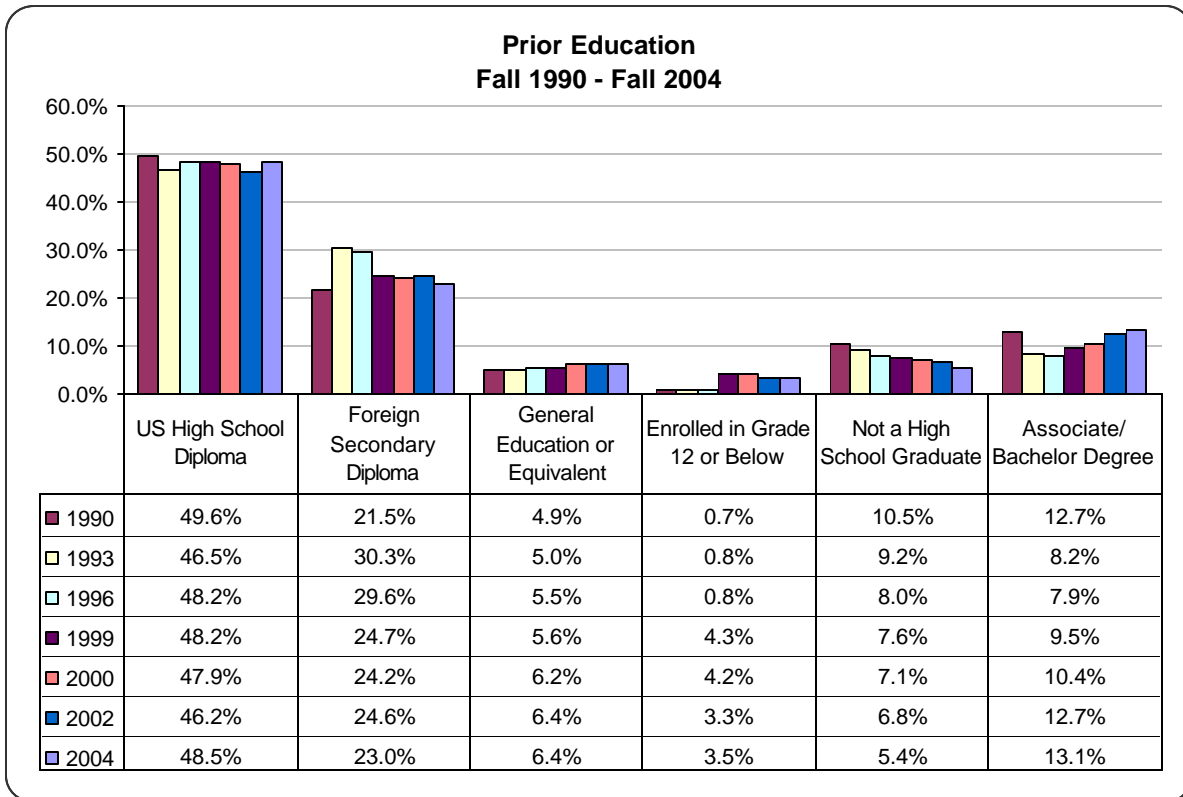


| Fall | Day Students | | Evening Students | | Day and Evening | | Total |
|------|--------------|-------|------------------|-------|-----------------|-------|--------|
| 1980 | 9,773 | 48.4% | 7,769 | 38.5% | 2,631 | 13.0% | 20,174 |
| 1981 | 9,936 | 48.5% | 7,869 | 38.4% | 2,687 | 13.1% | 20,492 |
| 1982 | 10,538 | 52.3% | 6,938 | 34.4% | 2,693 | 13.4% | 20,169 |
| 1983 | 9,392 | 53.5% | 5,619 | 32.0% | 2,557 | 14.6% | 17,568 |
| 1984 | 7,880 | 50.6% | 5,452 | 35.0% | 2,226 | 14.3% | 15,558 |
| 1985 | 6,873 | 50.0% | 4,581 | 33.3% | 2,289 | 16.7% | 13,743 |
| 1986 | 7,171 | 48.3% | 5,088 | 34.2% | 2,600 | 17.5% | 14,858 |
| 1987 | 7,094 | 49.9% | 4,424 | 31.1% | 2,706 | 19.0% | 14,224 |
| 1988 | 7,257 | 48.5% | 4,991 | 33.3% | 2,724 | 18.2% | 14,973 |
| 1989 | 8,009 | 49.9% | 4,818 | 30.0% | 3,209 | 20.0% | 16,036 |
| 1990 | 7,700 | 47.4% | 5,722 | 35.2% | 2,814 | 17.3% | 16,236 |
| 1991 | 8,205 | 48.8% | 5,538 | 32.9% | 3,066 | 18.2% | 16,810 |
| 1992 | 8,378 | 49.6% | 5,242 | 31.1% | 3,257 | 19.3% | 16,877 |
| 1993 | 7,624 | 49.9% | 4,805 | 31.5% | 2,841 | 18.6% | 15,270 |
| 1994 | 7,394 | 48.6% | 4,673 | 30.7% | 3,150 | 20.7% | 15,217 |
| 1995 | 6,916 | 48.2% | 4,266 | 29.7% | 3,164 | 22.1% | 14,346 |
| 1996 | 6,735 | 46.9% | 4,385 | 30.6% | 3,234 | 22.5% | 14,354 |
| 1997 | 6,740 | 44.1% | 4,756 | 31.1% | 3,779 | 24.7% | 15,275 |
| 1998 | 6,176 | 40.8% | 4,841 | 32.0% | 4,124 | 27.2% | 15,141 |
| 1999 | 6,447 | 41.7% | 4,942 | 32.0% | 4,054 | 26.3% | 15,443 |
| 2000 | 6,292 | 41.2% | 4,245 | 27.8% | 4,673 | 30.6% | 15,271 |
| 2001 | 6,593 | 38.6% | 5,626 | 32.9% | 4,876 | 28.5% | 17,095 |
| 2002 | 6,879 | 37.4% | 6,061 | 33.0% | 5,434 | 29.6% | 18,374 |
| 2003 | 6,621 | 39.0% | 5,055 | 29.8% | 5,308 | 31.3% | 16,984 |
| 2004 | 6,432 | 39.5% | 4,588 | 28.2% | 5,248 | 32.3% | 16,268 |

Source: The Los Angeles Community College District Student Information System (SIS).

Enrollment Data

Prior Education Distribution

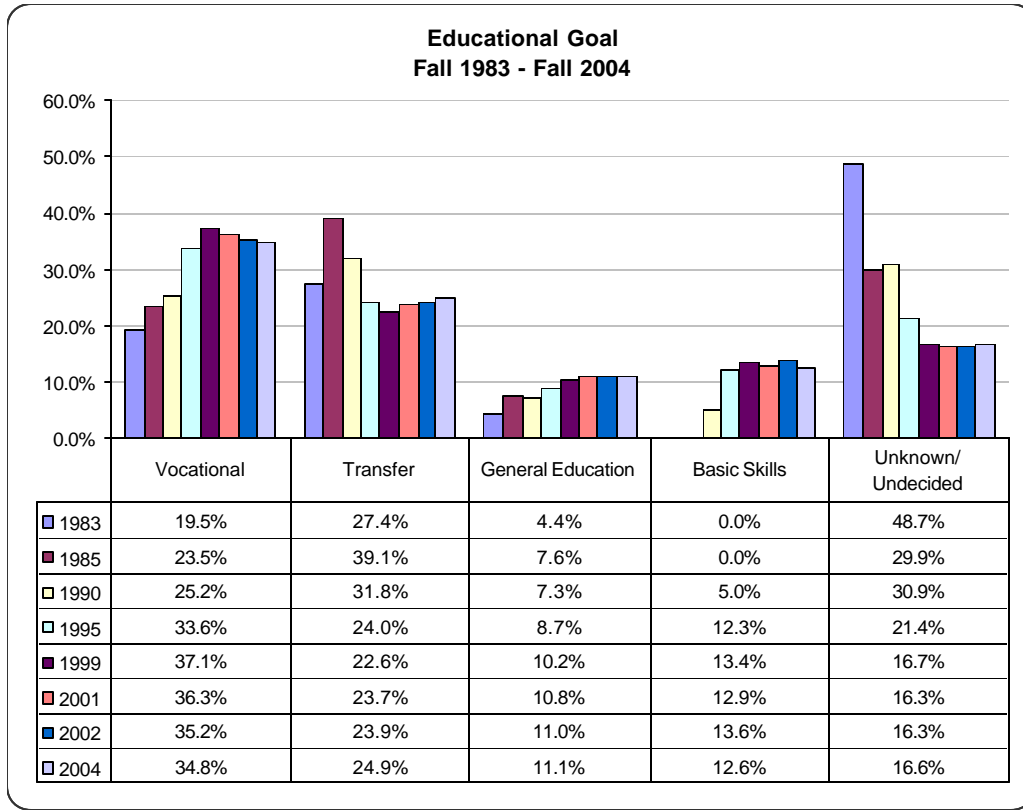


| Fall | US High School Diploma | Foreign Secondary Diploma | General Education or Equivalent | Enrolled in Grade 12 or Below | Not a High School Graduate | Associate/ Bachelor Degree | Total |
|------|------------------------|---------------------------|---------------------------------|-------------------------------|----------------------------|----------------------------|--------|
| 1990 | 8,055 49.6% | 3,485 21.5% | 803 4.9% | 120 0.7% | 1,707 10.5% | 2,067 12.7% | 16,236 |
| 1991 | 7,738 46.0% | 4,142 24.6% | 817 4.9% | 179 1.1% | 1,713 10.2% | 2,220 13.2% | 16,810 |
| 1992 | 7,528 44.6% | 4,583 27.2% | 824 4.9% | 207 1.2% | 1,624 9.6% | 2,111 12.5% | 16,877 |
| 1993 | 7,098 46.5% | 4,623 30.3% | 758 5.0% | 123 0.8% | 1,410 9.2% | 1,258 8.2% | 15,270 |
| 1994 | 7,290 47.9% | 4,675 30.7% | 764 5.0% | 153 1.0% | 1,313 8.6% | 1,022 6.7% | 15,217 |
| 1995 | 6,911 48.2% | 4,387 30.6% | 811 5.7% | 74 0.5% | 1,138 7.9% | 1,024 7.1% | 14,346 |
| 1996 | 6,925 48.2% | 4,251 29.6% | 788 5.5% | 113 0.8% | 1,149 8.0% | 1,128 7.9% | 14,354 |
| 1997 | 7,094 46.4% | 4,397 28.8% | 784 5.1% | 496 3.2% | 1,249 8.2% | 1,255 8.2% | 15,275 |
| 1998 | 7,165 47.3% | 4,077 26.9% | 873 5.8% | 569 3.8% | 1,220 8.1% | 1,237 8.2% | 15,141 |
| 1999 | 7,450 48.2% | 3,822 24.7% | 865 5.6% | 659 4.3% | 1,180 7.6% | 1,467 9.5% | 15,443 |
| 2000 | 7,316 47.9% | 3,701 24.2% | 942 6.2% | 634 4.2% | 1,085 7.1% | 1,593 10.4% | 15,271 |
| 2001 | 7,867 46.9% | 4,059 24.2% | 1,131 6.7% | 734 4.4% | 1,165 6.9% | 1,835 10.9% | 16,791 |
| 2002 | 8,307 46.2% | 4,416 24.6% | 1,151 6.4% | 589 3.3% | 1,228 6.8% | 2,277 12.7% | 17,968 |
| 2003 | 7,215 45.6% | 4,029 25.5% | 1,059 6.7% | 587 3.7% | 970 6.1% | 1,964 12.4% | 15,824 |
| 2004 | 7,807 48.5% | 3,698 23.0% | 1,037 6.4% | 569 3.5% | 873 5.4% | 2,115 13.1% | 16,099 |

Note: Totals exclude unknown prior education.

Source: The Los Angeles Community College District Student Information System (SIS).

Educational Goal Distribution



| Fall | Vocational | | Transfer | | General Education | | Basic Skills | | Unknown/ Undecided | | Total |
|------|------------|-------|----------|-------|-------------------|-------|--------------|-------|-----------------------|-------|--------|
| 1983 | 3,426 | 19.5% | 4,814 | 27.4% | 773 | 4.4% | 0 | 0.0% | 8,556 | 48.7% | 17,568 |
| 1985 | 3,230 | 23.5% | 5,374 | 39.1% | 1,044 | 7.6% | 0 | 0.0% | 4,109 | 29.9% | 13,743 |
| 1990 | 4,091 | 25.2% | 5,163 | 31.8% | 1,185 | 7.3% | 812 | 5.0% | 5,017 | 30.9% | 16,236 |
| 1995 | 4,820 | 33.6% | 3,443 | 24.0% | 1,248 | 8.7% | 1,765 | 12.3% | 3,070 | 21.4% | 14,346 |
| 1999 | 5,819 | 37.1% | 3,545 | 22.6% | 1,600 | 10.2% | 2,102 | 13.4% | 2,619 | 16.7% | 15,685 |
| 2001 | 6,204 | 36.3% | 4,049 | 23.7% | 1,848 | 10.8% | 2,213 | 12.9% | 2,781 | 16.3% | 17,095 |
| 2002 | 6,466 | 35.2% | 4,393 | 23.9% | 2,015 | 11.0% | 2,499 | 13.6% | 3,001 | 16.3% | 18,374 |
| 2003 | 6,038 | 35.6% | 4,144 | 24.4% | 1,760 | 10.4% | 2,224 | 13.1% | 2,818 | 16.6% | 16,984 |
| 2004 | 5,659 | 34.8% | 4,056 | 24.9% | 1,803 | 11.1% | 2,051 | 12.6% | 2,699 | 16.6% | 16,268 |

Source: The Los Angeles Community College District Student Information System (SIS).

Educational Preparation

Assessment and Placement Summary Math, English, and ESL Fall 1999, Fall 2001, Fall 2002, Fall 2003 and Fall 2004

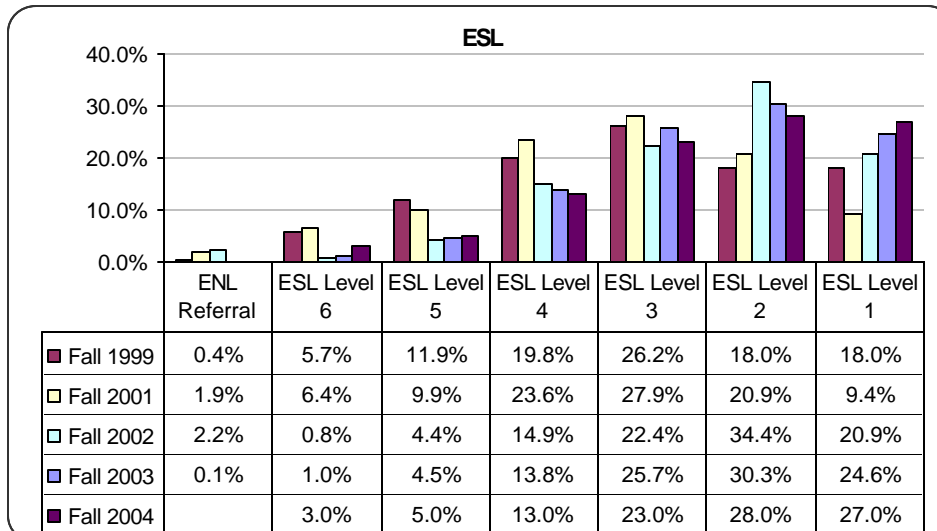
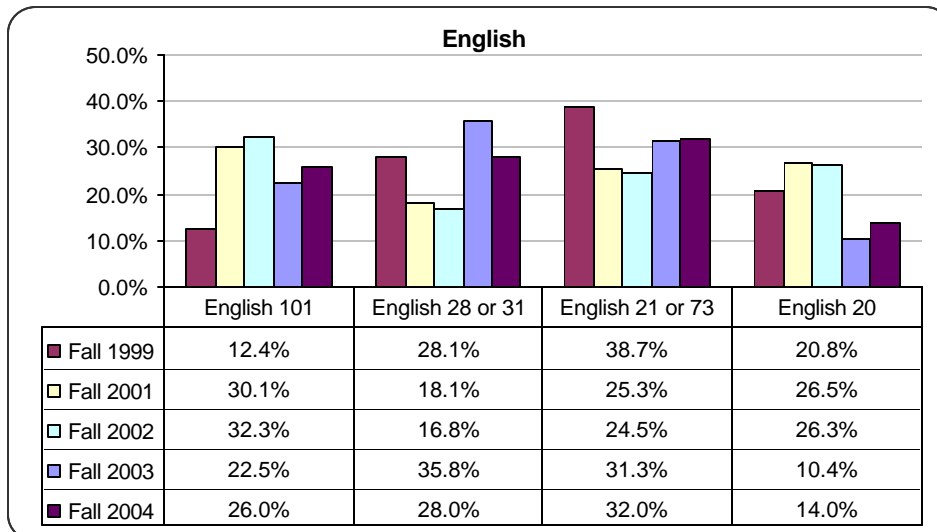
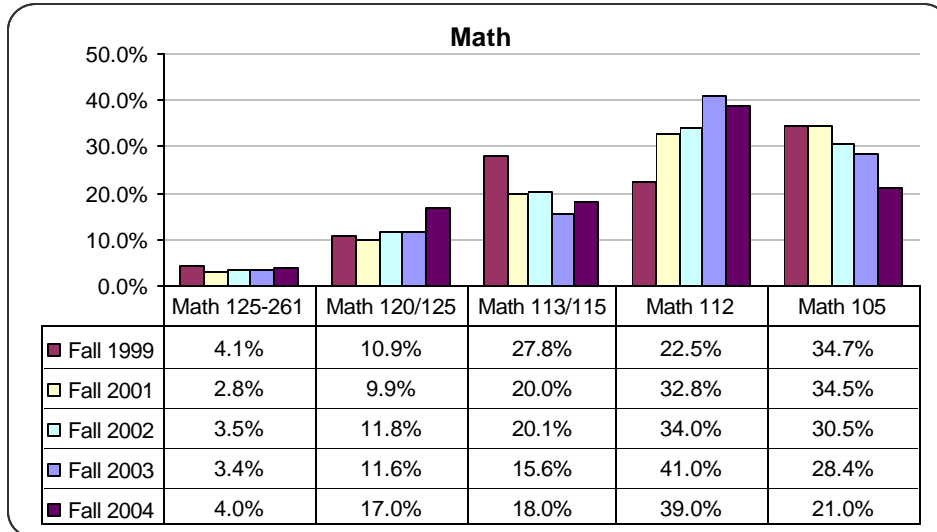
| Course Level | Recommended Placement | Fall 1999 | | Fall 2001 | | Fall 2002 | | Fall 2003 | | Fall 2004 | |
|-------------------|-----------------------|--------------|-------------|--------------|-------------|--------------|-------------|--------------|-------------|--------------|-------------|
| College Level | Math 125-261 | 76 | 4.1% | 66 | 2.8% | 154 | 3.5% | 100 | 3.4% | 129 | 4.0% |
| Pre-College Level | Math 120/125 | 200 | 10.9% | 231 | 9.9% | 523 | 11.8% | 343 | 11.6% | 545 | 17.0% |
| Pre-College Level | Math 113/115 | 513 | 27.8% | 468 | 20.0% | 889 | 20.1% | 464 | 15.6% | 585 | 18.0% |
| Basic Skills | Math 112 | 415 | 22.5% | 767 | 32.8% | 1,502 | 34.0% | 1,216 | 41.0% | 1,244 | 39.0% |
| Basic Skills | Math 105 | 639 | 34.7% | 808 | 34.5% | 1,346 | 30.5% | 842 | 28.4% | 683 | 21.0% |
| Total | | 1,843 | 100% | 2,340 | 100% | 4,414 | 100% | 2,965 | 100% | 3,186 | 100% |

| Course Level | Recommended Placement | Fall 1999 | | Fall 2001 | | Fall 2002 | | Fall 2003 | | Fall 2004 | |
|-------------------|-----------------------|--------------|---------------|--------------|---------------|--------------|---------------|--------------|---------------|--------------|---------------|
| College Level | English 101 | 171 | 12.4% | 627 | 30.1% | 1,454 | 32.3% | 617 | 22.5% | 756 | 26.0% |
| Pre-College Level | English 28 or 31 | 387 | 28.1% | 377 | 18.1% | 757 | 16.8% | 982 | 35.8% | 787 | 28.0% |
| Basic Skills | English 21 or 73 | 533 | 38.7% | 527 | 25.3% | 1,104 | 24.5% | 858 | 31.3% | 906 | 32.0% |
| Basic Skills | English 20 | 287 | 20.8% | 553 | 26.5% | 1,182 | 26.3% | 284 | 10.4% | 408 | 14.0% |
| Total | | 1,378 | 100.0% | 2,084 | 100.0% | 4,497 | 100.0% | 2,741 | 100.0% | 2,857 | 100.0% |

| Course Level | Recommended Placement | Fall 1999 | | Fall 2001 | | Fall 2002 | | Fall 2003 | | Fall 2004 | |
|--------------|-----------------------|------------|---------------|------------|---------------|--------------|---------------|--------------|---------------|--------------|---------------|
| ESL | ENL Referral | 3 | 0.4% | 15 | 1.9% | 30 | 2.2% | 1 | 0.1% | | |
| ESL | ESL Level 6 | 48 | 5.7% | 50 | 6.4% | 11 | 0.8% | 14 | 1.0% | 37 | 3.0% |
| ESL | ESL Level 5 | 100 | 11.9% | 77 | 9.9% | 61 | 4.4% | 61 | 4.5% | 66 | 5.0% |
| ESL | ESL Level 4 | 167 | 19.8% | 184 | 23.6% | 207 | 14.9% | 188 | 13.8% | 161 | 13.0% |
| ESL | ESL Level 3 | 221 | 26.2% | 218 | 27.9% | 312 | 22.4% | 349 | 25.7% | 291 | 23.0% |
| ESL | ESL Level 2 | 152 | 18.0% | 163 | 20.9% | 479 | 34.4% | 411 | 30.3% | 345 | 28.0% |
| ESL | ESL Level 1 | 152 | 18.0% | 73 | 9.4% | 291 | 20.9% | 334 | 24.6% | 341 | 27.0% |
| Total | | 843 | 100.0% | 780 | 100.0% | 1,391 | 100.0% | 1,358 | 100.0% | 1,241 | 100.0% |

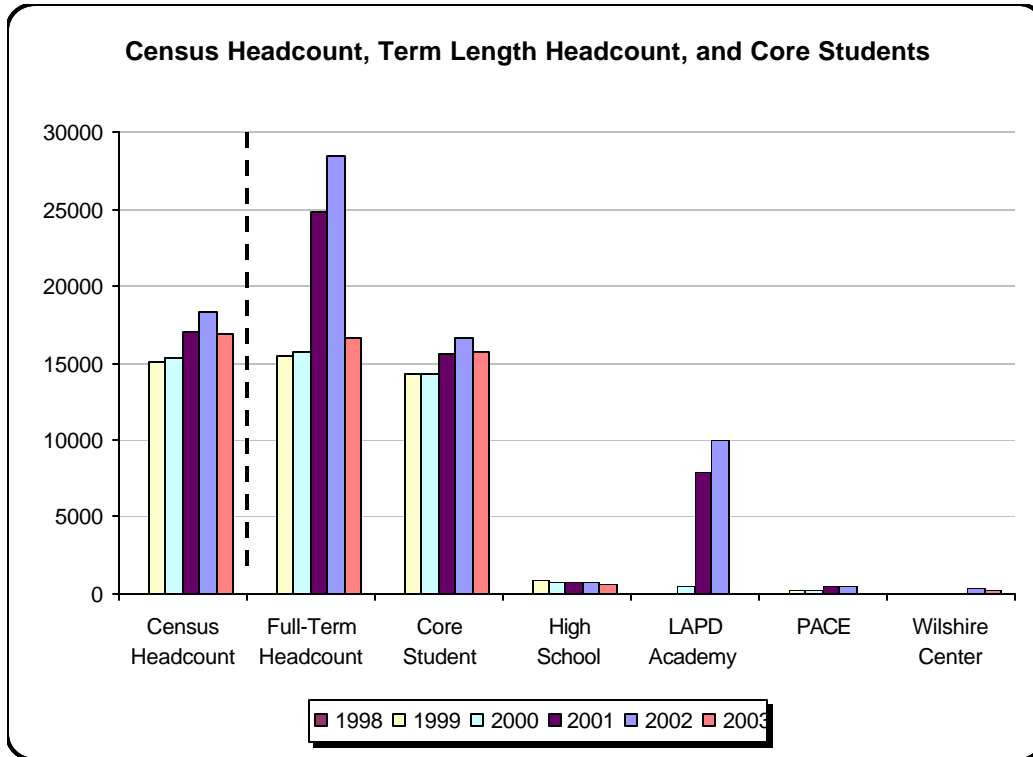
Source: The Los Angeles Community College District Student Information System (SIS)

Assessment and Placement Summary Math, English, and ESL Fall 1999, Fall 2001, Fall 2002, Fall 2003 and Fall 2004



Core Students

Census Headcount, Full-Term Headcount, and Core Students Fall 1998 - Fall 2003



| Fall | Census Headcount | | | Full-Term Headcount | | Core Student | | High School Student | | LAPD Academy Program | | PACE | | Wilshire Center | |
|------|------------------|--|--------|---------------------|--------|--------------|-------|---------------------|------|----------------------|-------|-----------|------|-----------------|------|
| | Headcount | | | Headcount | | Headcount | | Headcount | % | Headcount | % | Headcount | % | Headcount | % |
| 1998 | 15,141 | | 100.0% | 15,553 | 100.0% | 14,388 | 92.5% | 943 | 6.1% | 0 | 0.0% | 222 | 1.4% | 0 | 0.0% |
| 1999 | 15,443 | | 100.0% | 15,821 | 100.0% | 14,295 | 90.4% | 758 | 4.8% | 493 | 3.1% | 275 | 1.7% | 0 | 0.0% |
| 2000 | 15,271 | | 100.0% | 16,235 | 100.0% | 14,214 | 87.6% | 731 | 4.5% | 972 | 6.0% | 318 | 2.0% | 0 | 0.0% |
| 2001 | 17,095 | | 100.0% | 24,815 | 100.0% | 15,598 | 62.9% | 780 | 3.1% | 7,915 | 31.9% | 522 | 2.1% | 0 | 0.0% |
| 2002 | 18,372 | | 100.0% | 28,387 | 100.0% | 16,741 | 59.0% | 726 | 2.6% | 9,956 | 35.1% | 519 | 1.8% | 445 | 1.6% |
| 2003 | 16,984 | | 100.0% | 16,711 | 100.0% | 15,777 | 94.4% | 653 | 3.9% | 0 | 0.0% | 0 | 0.0% | 281 | 1.7% |

Definitions:

- 1) Full-Term Headcount A count of students enrolled at any time during a term who received a grade or other transcriptable notation, including W.
- 2) Core Student Those students who are not enrolled in specialized academic programs, including PACE, the LAPD Academy program, and concurrently enrolled high school students. Core students are reported as a 'full term headcount,' which includes all students who received a grade or other transcriptable notation, including W.

Source: The Los Angeles Community College District Attendance Accounting Office, The Los Angeles Community College District Student Information System (SIS)