

COLLEGE PROFILE 2002 - 2003

Office of Institutional Advancement

**Rebecca Tillberg, Dean
Academic Planning and Research**

**Daniel Seymour, Executive Dean, Institutional Advancement
Michelle Long-Coffee, Director, Marketing and Communications
Janice Love, Research Analyst and Assessment Coordinator**

Our Vision: Los Angeles City College is an urban oasis of learning that educates minds, opens hearts, and celebrates community .

Priority #8 from the Strategic Plan to achieve our vision: Collect and use data systematically to make informed decisions that lead to continuous organizational improvement .



ACKNOWLEDGMENTS

This College Profile originates from the Office of Institutional Advancement at Los Angeles City College. It represents the thinking and collaboration that comes from a team of committed people, all of them working to improve the connections between this office and the rest of LA City College.

In particular, we wish to recognize the support of the following people. Special thanks go to all those who read drafts of the Profile and offered many helpful suggestions and comments. At a fundamental level, numerous Information Technology staff in the Los Angeles Community College District Office made possible the data systems that are the sources for the information contained in this publication. Among others, this group includes Bob Ponek and Fred Zupp. In addition, the staff of the LACCD Research and Information Office, including George Prather and Dexter Kelly, and of the Attendance Accounting Office, including Cathy Iyemura and Sarah Crespo, made other essential information available.

<p>Board of Trustees</p> <p><i>Mona Field, President</i></p> <p><i>Georgia L. Mercer, Vice President</i></p> <p><i>Kelly G. Candaele</i></p> <p><i>Warren T. Furutani</i></p> <p><i>Nancy S. Pearlman</i></p> <p><i>Sylvia Scott-Hayes</i></p> <p><i>Michael D. Waxman</i></p> <p><i>Stacey L. McMullen, Student Trustee</i></p> <p>LACCD Administration</p> <p><i>Mark Drummond, Chancellor</i></p> <p><i>Peter Landsberger, Senior Vice Chancellor</i></p> <p><i>Larry Eisenberg, Exec. Director, Facilities</i></p> <p><i>Camille A. Goulet, General Counsel</i></p>	<p style="text-align: center;">LACC Management Team</p> <p><i>Doris Pichon Givens, President</i></p> <p><i>Jackie Ireland, Vice President</i></p> <p><i>Myra Siegel, Vice President</i></p> <p><i>Arthur Tyler, Vice President</i></p> <p><i>Daniel Seymour, Executive Dean</i></p> <table style="width: 100%; border: none;"> <tr> <td style="width: 50%;"><i>Lawrence Bradford, Dean</i></td> <td style="width: 50%; text-align: right;"><i>Leanna Watts, Dean</i></td> </tr> <tr> <td><i>Merrill Eastcott, Dean</i></td> <td style="text-align: right;"><i>Cathy Wixon, Dean</i></td> </tr> <tr> <td><i>Allison Jones, Dean</i></td> <td style="text-align: right;"><i>Jerri Potras, Associate Vice President</i></td> </tr> <tr> <td><i>Ronda Mintz-Binder, Dean</i></td> <td style="text-align: right;"><i>Reagan Romali, Associate Vice President</i></td> </tr> <tr> <td><i>Joyce Moore, Dean</i></td> <td style="text-align: right;"><i>Willie Richmond, Assoc Vice President</i></td> </tr> <tr> <td><i>Arnel Pascua, Dean</i></td> <td style="text-align: right;"><i>Michelle Long-Coffee, Mktg Com Director</i></td> </tr> <tr> <td><i>Mohammed Pashazadeh, Dean</i></td> <td style="text-align: right;"><i>Janice Love, Research Analyst</i></td> </tr> <tr> <td><i>Betsy Regalado, Dean</i></td> <td style="text-align: right;"><i>Fred Piegonski, Exec Asst</i></td> </tr> <tr> <td><i>Rebecca Tillberg, Dean</i></td> <td style="text-align: right;"><i>Lenore Saunders, Admin Analyst</i></td> </tr> <tr> <td><i>Jeremy Villar, Dean</i></td> <td></td> </tr> </table>	<i>Lawrence Bradford, Dean</i>	<i>Leanna Watts, Dean</i>	<i>Merrill Eastcott, Dean</i>	<i>Cathy Wixon, Dean</i>	<i>Allison Jones, Dean</i>	<i>Jerri Potras, Associate Vice President</i>	<i>Ronda Mintz-Binder, Dean</i>	<i>Reagan Romali, Associate Vice President</i>	<i>Joyce Moore, Dean</i>	<i>Willie Richmond, Assoc Vice President</i>	<i>Arnel Pascua, Dean</i>	<i>Michelle Long-Coffee, Mktg Com Director</i>	<i>Mohammed Pashazadeh, Dean</i>	<i>Janice Love, Research Analyst</i>	<i>Betsy Regalado, Dean</i>	<i>Fred Piegonski, Exec Asst</i>	<i>Rebecca Tillberg, Dean</i>	<i>Lenore Saunders, Admin Analyst</i>	<i>Jeremy Villar, Dean</i>	
<i>Lawrence Bradford, Dean</i>	<i>Leanna Watts, Dean</i>																				
<i>Merrill Eastcott, Dean</i>	<i>Cathy Wixon, Dean</i>																				
<i>Allison Jones, Dean</i>	<i>Jerri Potras, Associate Vice President</i>																				
<i>Ronda Mintz-Binder, Dean</i>	<i>Reagan Romali, Associate Vice President</i>																				
<i>Joyce Moore, Dean</i>	<i>Willie Richmond, Assoc Vice President</i>																				
<i>Arnel Pascua, Dean</i>	<i>Michelle Long-Coffee, Mktg Com Director</i>																				
<i>Mohammed Pashazadeh, Dean</i>	<i>Janice Love, Research Analyst</i>																				
<i>Betsy Regalado, Dean</i>	<i>Fred Piegonski, Exec Asst</i>																				
<i>Rebecca Tillberg, Dean</i>	<i>Lenore Saunders, Admin Analyst</i>																				
<i>Jeremy Villar, Dean</i>																					

Table of Contents

About Los Angeles City College

History	1
Vision, Priorities, Mission, and Philosophy	2
Facts In Brief	3
Location and Directions	4

Section 1 – Student Information

Enrollment Trends	7
Los Angeles City College Fall Credit Census Headcount.....	7
Los Angeles City College and Los Angeles Community College District Fall Credit Census Headcount.....	8
State Community Colleges and National Community Colleges Fall Headcount.....	9
Student Profile, Fall 2002	10
Ethnicity, Primary Language, Age, Gender, Unit Load, and Day and Evening Enrollment.....	10
Prior Education, Educational Goal, New and Continuing Status, Core Students, Math Placement Levels, and English/ESL Placement Levels	11
Demographics, Fall 1997 - Fall 2002	12
Ethnicity Distribution	12
Primary Language Distribution	13
Age Distribution.....	14
Gender Distribution.....	15
Enrollment Data.....	16
Unit Load Distribution	16
Day and Evening Enrollment Distribution	17
Prior Education Distribution	18
Educational Goal Distribution	19
Educational Preparation	20
Assessment and Placement Summary.....	20
Core Students, Fall 1998 - Fall 2002	22

Section 2 – Student Access

Enrollment Sources.....	25
Enrollment by Zip Codes	25
Sources of Students: Top 20 Countries.....	26
Sources of Students: Top 40 High Schools	27
Feeder High Schools: API Base Report	28

Section 3 – Student Services

Student Services	31
Child Development Center Demographics	32
Office of Special Services (OSS) Demographics	34
EOP&S Demographics.....	36
Federal Financial Aid Recipients.....	38
International Students Program Demographics	40
Scholars Program Demographics.....	42
TRIO/Student Support Services Program Demographics.....	44
Program Outcomes: Average Unit Load, Course Completion, Successful Course Completion	
Average GPA, Persistence I (Fall to Spring), Persistence II (Fall to Fall)	46
College Total, Child Development Center, Office of Special Services, EOP&S	46
Federal Financial Aid, International Students, Scholars Program, TRIO	47

Table of Contents

Section 4 – Student Outcomes

Course Completion: Successful Completers and Grade Distribution	51
Retention	52
Persistence.....	53
Persistence, Fall 1998 - Fall 2002	53
Persistence by Semester Status, Gender, Ethnicity, Age and Primary Language.....	54
Degrees and Certificates Awarded	56
Degrees and Certificates Awarded, 1989/90 - 2002/03	56
Associate in Arts Degrees Awarded by Department and Program.....	58
Associate in Science Degrees Awarded by Department and Program.....	59
Certificates Awarded by Department and Program.....	60
Skill Certificates Awarded by Department and Program.....	61
Associate Degrees and Certificates Awarded, Demographics: Gender, Ethnicity, Primary Language, Age.....	63
Transfer Students.....	72
Fall Transfers to University of California, California State University, and Private Institutions	72
Full-Year Transfers to University of California and California State University.....	73
Ethnic Distribution of Transfers to University of California, California State University, and Private Institutions	74
Ethnic Distribution of Fall Transfers to University of California, Fall 1993 - Fall 2002	75
Ethnic Distribution of Fall Transfers to California State University, Fall 1993 - Fall 2002.....	76
Ethnic Distribution of Fall Transfers to Private Colleges and Universities, Fall 1993 - Fall 2000	77
Destination Campus of Transfers, 1989/90 - 2001/02.....	78

Section 5 – Instructional Programs

Full-Time Equivalent Faculty (FTEF): Fall 2000, Fall 2001, Fall 2002.....	83
Full-Time Equivalent Student (FTES): 1991/92 - 2002/03.....	90
Basic Skills FTES, Resident and Nonresident FTES	91
FTES by Department and Year, 2000/01 - 2002/03.....	92
FTES by Department and Term, 2002/03.....	93

Section 6 – Employees

Employee Trends, Fall 2000 - Fall 2002.....	97
Employee Groups, Fall 2002	99
Demographics: Ethnicity, Age, Gender, Completed Degree.....	100

Section 7 – Allocations and Expenditures

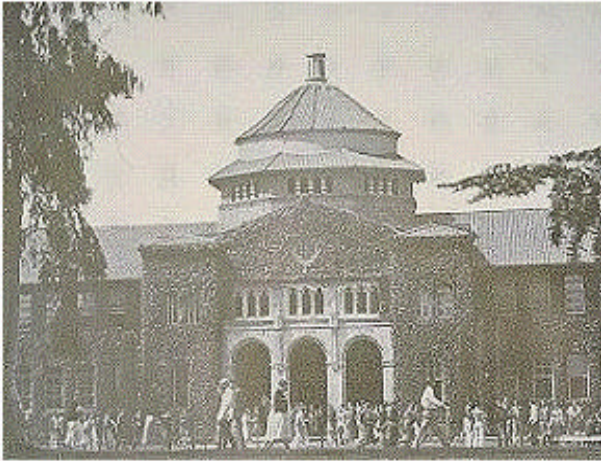
Unrestricted General Fund Allocations	111
Restricted and Unrestricted General Fund Expenditures	112
Unrestricted General Fund Expenditures	113

Section 8 – Service Area

Maps	119
Los Angeles City College and Los Angeles Community College District.....	119
Service Planning Area (SPA) 4 Metro and Los Angeles County	120
Population	121
Interim County Population Projections.....	121
Population 2000 Census: SPA 4 Metro and Los Angeles County.....	122
Demographics: Ethnicity, Age, Household Income, Labor Force.....	124
Labor Market Information	131
Occupations With The Greatest Absolute Job Growth.....	131
Occupations Requiring an Associate Degree With The Fastest Growth Rate.....	132
Occupations Requiring an Associate Degree With The Most Decline.....	133
Major Employers In Los Angeles County	134

Section 9 – Glossary	135
----------------------------	-----

Los Angeles City College



History

In 1914 the Los Angeles Normal School (teachers college) moved to a new campus on Vermont Avenue (from its location in downtown Los Angeles at 5th and Hope Streets). In 1919, the campus was reopened as the Southern Branch of the University of California at Berkeley. In 1927, the Southern Branch was given full University status as the University of California at Los Angeles. UCLA was housed on the Vermont Avenue campus until it moved to its new Westwood campus in 1929.

In the fall of 1928, the Los Angeles Board of Education deliberated on establishing a junior college. The Vermont Avenue campus, centrally located adjacent to transit lines, was acquired to serve as the City's first Junior College. Classes began in the fall of 1929. Dr. William H. Snyder served as the institution's first director. During its first year, the school offered only first-semester courses. The "semi-professional courses" were for students who wanted to limit their college education to two years, and the "certificate courses" were for those looking to continue toward university work. There were more than 1,300 students taught by some 54 faculty. The first Associate in Arts degrees were conferred on June 19, 1931.

In 1931 the voters of Los Angeles approved the formation of a junior college district that changed the school's organizational structure from a department of the Los Angeles Board of Education to a separate District that allowed the school to draw aid directly from state funds. The name of the school was changed to Los Angeles City College in 1938.

After World War II the Vermont campus was shared by Los Angeles City College and the newly founded Los Angeles State College of Applied Arts and Sciences. In 1955, Los Angeles State moved to the present location off the San Bernardino Freeway. Later the name was changed to California State University, Los Angeles.

By 1950, Los Angeles City College had become the largest Junior College in the United States. It was the first in Los Angeles and established the model for the City's subsequent network of nine Junior Colleges.

As it evolved, the LACC campus changed from a 1900's interpretation of an eastern teachers' college with its ivy covered brick buildings into a sleek postwar international style campus designed to reflect and respond to the postwar economic boom in southern California and the needs for an educated work force. Buildings housed departments that would support the region's growth and the architecture reflected the ideal of a "universal" plan that would accommodate technical and educational needs.

In July 1969, the California State Legislature enacted legislation allowing the separation of the nine-campus Los Angeles Community College District from the Los Angeles Unified School District. A seven member Board of Trustees was elected and formally assumed governance. (The other eight colleges of the district are East Los Angeles College, Los Angeles Harbor College, Los Angeles Mission College, Los Angeles Pierce College, Los Angeles Trade-Technical College, Los Angeles Valley College, Southwest College, and West Los Angeles College.)



Where is Los Angeles City College?

Los Angeles City College is located on a site of 48 acres, northwest of downtown Los Angeles, near the 101 Freeway and the southeast edge of Hollywood. It is a richly diverse community in income, cultures and neighborhood character.

LACC is the major educational institution in the region. Its location, size, and economics provide an opportunity for it to be a major influence on the region's development. The Vermont Avenue corridor links the site to the 101 Freeway and with the Metro Red Line to the larger region. Its position continues an institutional and cultural belt running north-south that includes the Medical Center complex at Sunset, Barnsdall Park, the Griffith Observatory and the historic Hollywood Hills.

Los Angeles City College

Vision Statement

Los Angeles City College is an urban oasis of learning that educates minds, opens hearts, and celebrates community.

Eight Campus Priorities

Los Angeles City College aligns its efforts with eight priorities developed through the visioning process.

1. Foster a culture of academic excellence by systematically strengthening the educational program and the quality of teaching that lead directly to greater student success.
2. Maintain and enhance a safe, aesthetically pleasing campus environment that encourages involvement, nurtures community, and leads to student success.
3. Expand and strengthen partnerships with business, industry, educational institutions, neighborhood groups, and regional associations.
4. Create a student-centered learning environment that focuses on students' needs and reduces the barriers to their success.
5. Enhance the college's visibility and reputation for quality.
6. Increase the resources available to the college through state and district allocation processes and through extramural development efforts.
7. Develop and implement plans to enhance the efficient allocation of resources that support the college's vision and priorities.
8. Collect and use data systematically to make informed decisions that lead to continuous organizational improvement.

Mission

As a comprehensive community college, Los Angeles City College offers programs, coursework, support, and guidance to develop a community of learners, both near and far, with the knowledge, skills and attitudes necessary for optimal growth and action in their personal and professional lives.

As its primary mission, Los Angeles City College offers post-secondary lower division arts and sciences and vocational courses enabling students to complete:

- Certificate and Associate Degree programs leading directly to direct entrance into the workforce
- A curriculum designed in preparation for transfer to a four-year institution.

The College affirms the essential role of remedial and basic skills instruction, English as a Second Language, and support services that are intrinsic to student success at the post-secondary level.

The College recognizes its responsibility to provide general education and occupational retraining activities to the community at large.

The College advances state, region, and local economic growth and global competitiveness through education, training and services that contribute to workforce improvement. The College commits to providing educational and cultural activities that contribute to the general well-being of the community it serves.

Philosophy

Los Angeles City College is committed to providing access to higher education for all students who have the motivation to benefit. The College offers an educational environment where students have the opportunity to develop to their full potential. To this end, the College:

- Encourages students to become independent learners, critical thinkers, and active participants in the democratic process;
- Offers a challenging curriculum developed by a faculty that recognizes teaching as its primary responsibility;
- Believes that learning occurs in many ways and in many places and that it is not limited to the classroom;
- Promotes student equity and staff diversity;
- Fosters sensitivity to and appreciation for the cultural and individual differences that exist among its diverse student body and staff;
- Nurtures an environment of academic and intellectual freedom, mutual respect, collegiality, and collaboration throughout the college community;
- Commits to meeting the ever changing educational needs of students who live and work in a fast paced, technological, and global society by offering courses in a variety of formats, times, and places.



855 North Vermont Avenue
 Los Angeles, CA 90029
<http://www.lacitycollege.edu>
 (323) 953-4000

Origins: Established September 9, 1929 on the former site of UCLA. Shared a campus with the college that would become California State University, Los Angeles for several years. Renamed Los Angeles City College in 1938. Now the flagship of the nine public two-year colleges within the Los Angeles Community College District.

Campus: 48 acre campus on the northeast side of Hollywood.

Satellite Campuses Koreatown Education Center
And Offsite Learning: The Corporate and Community Education Center in Downtown
 The LA River Center in Cypress
 The Northeast Campus at the Van de Kamp site (in development)

Fall 2002 Enrollment-18,372

Student Profile: Gender-44% Male, 56% Female
 Ethnicity-42% Hispanic, 24% White, 20% Asian/Pacific Islander, 12% Black/African American

International Students: LACC ranks in the top 20 of Associate degree granting institutions in the country in the number and percent of international students served at the college. In Fall 2002, more than 600 international students enrolled at LACC.

Faculty: 233 full-time faculty, 361 hourly faculty, 50 non-teaching faculty (counselors, librarians, etc.)

Fees and Tuition: Enrollment fee: \$18 per unit, Non-Resident Tuition: additional \$149 per unit, Foreign citizen tuition: additional \$159 per unit

Financial Aid: Grants, loans, work-study, scholarships. 61% of students receive financial aid.

Athletics: College intercollegiate teams: men's and women's basketball, men's and women's cross country, men's and women's track and field, men's and women's golf, women's badminton, and men's baseball. Men's and women's gyms, including pool, tennis courts, and fitness center.

Clubs: Armenian Heritage, Art Club, Chinese Club, City College Composers, Japanese Club, Judo Club, Math Club, Music Lovers Club, River of Words (Poetry), Russian Culture Club, Samahan (Filipino) Club, Science Club, Soccer Club, The Source, Theatre Academy, Student Council

Facilities: Academic buildings, physical fitness center and pool, health center, large parking structure, library, men's and women's gym, 39 computer labs, bookstore, theatre and field. LACC has recently begun a \$147 million renovation of the campus, which will include the renovation or replacement of many buildings. In addition, three new buildings are slated for construction within the next few years.

Academic Divisions: LACC has 26 departments, encompassing more than 70 disciplines. Related academic departments are combined into four Interdepartmental Workgroups, known as IDWGs.

Academic Program: AA and AS undergraduate degrees in more than 60 programs, vocational certificates and skill certificates in more than 100 programs. Not for credit, extension courses, weekend and evening classes, Instructional TV, and on-line courses. LACC was among the 100 top Certificate producers among two-year colleges nation-wide in 1999-2000.

Requirements: High school graduate, 18 years or older who can benefit from the instruction offered, or under 18 years old and not a high school graduate under special programs.

LACCD Board of Trustees:	Mona Field, President	Georgia L. Mercer, Vice President	Kelly G. Candaele
	Warren T. Furutani	Nancy S. Pearlman	Sylvia Scott-Hayes
	Michael D. Waxman	Stacey L. McMullen, Student Trustee	

District Administration:	Dr. Mark Drummond, Chancellor	Dr. Peter J. Landsberger, Senior Vice Chancellor
	Larry Eisenberg, Executive Director	Camille A. Goulet, General Counsel
College President:	Dr. Doris Pichon Givens	

Accreditation: Western Association of Schools and Colleges
 Accrediting Commission for Community and Junior Colleges
 American Dental Association, The American Dietetic Association
 California Board of Registered Nursing
 Joint Review Committee on Education in Radiologic Technology

Location and Directions

Main Campus Address

Los Angeles City College
855 N. Vermont Avenue
Los Angeles, CA 90029

Toll free number:
888-930-LACC or 888-930-5222
<http://www.lacitycollege.edu>

Satellite Campuses

- LACC Koreatown Education Center
3440 Wilshire Boulevard, Suite 400
Los Angeles, CA 90010
213-487-1977
<http://www.lacitycollege.edu/offsite/koreatown/>
- The LA River Center
576 West Avenue 26
Cypress, CA 90065
323-223-0604
- The Corporate and Community Education Center
770 Wilshire Boulevard
Los Angeles, CA 90017
213-891-1594
<http://www.ccec8.org/>
- The Northeast Campus
(In development - Opens 2006)

By Car

Parking is available by permit at Parking Lot 1. Daily permits are available by dispenser in Lot #1 for Lot #1 only. Visitors must display their permits clearly in the front window. Failure to display (hang) the permit properly may result in parking citation. There is limited metered parking available on Monroe Street at Heliotrope drive.

By Bus or Metro

Metro Red Line: Vermont/Santa Monica/LA City College Station
Buses 4/304, 156, 204/354

Metro Bus and Metro Rail Information
1-800-COMMUTE
<http://www.mta.net>

Transit Information for Hearing-Impaired
1-800-252-9040/TTY

Metro Reduced Fare Office
213-680-0054

By Bicycle

Bike racks are available around the campus

