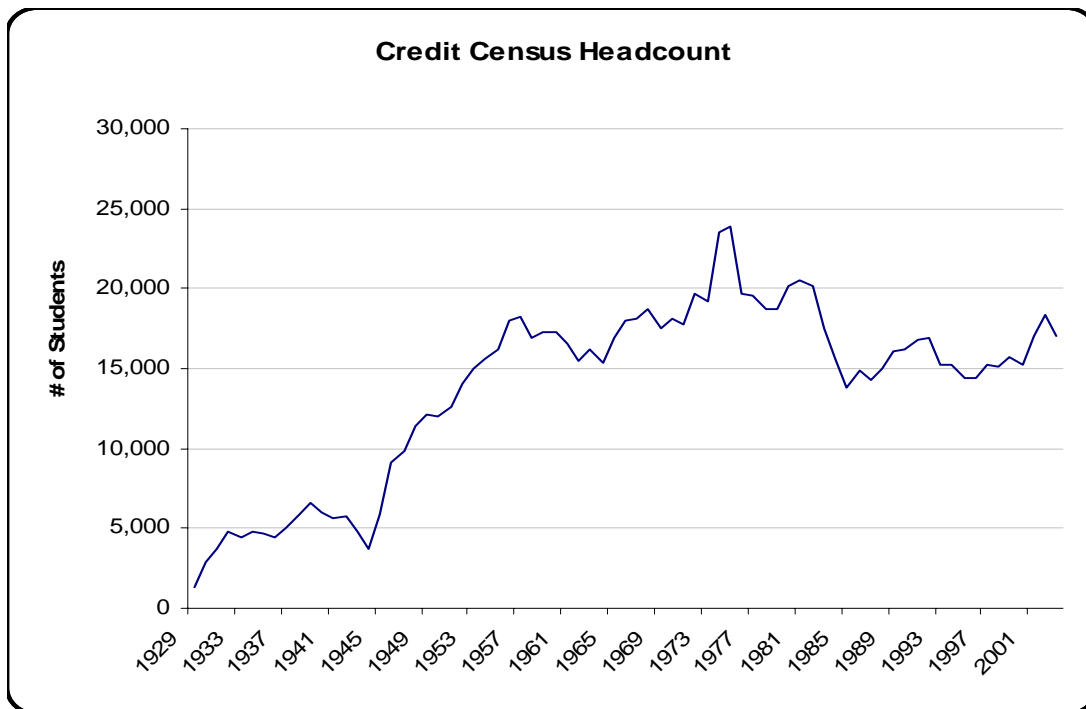


SECTION 1



STUDENT INFORMATION

**Credit Census Headcount
Fall 1929 - Fall 2003**

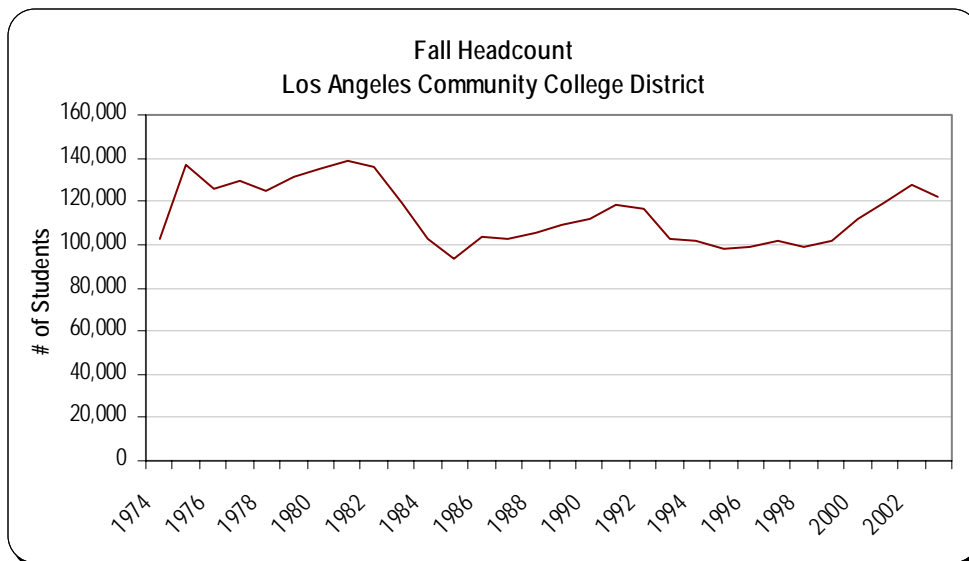
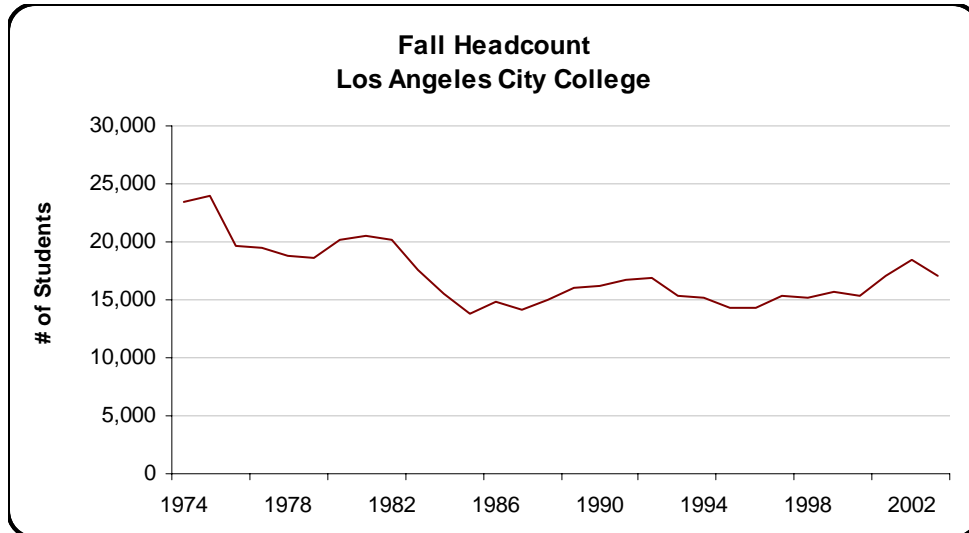


Fall	# of Students	Fall	# of Students	Fall	# of Students	% Change
1929	1,377	1954	15,591	1979	18,701	-0.4%
1930	2,826	1955	16,246	1980	20,174	7.9%
1931	3,712	1956	17,980	1981	20,492	1.6%
1932	4,755	1957	18,256	1982	20,169	-1.6%
1933	4,497	1958	16,929	1983	17,568	-12.9%
1934	4,763	1959	17,231	1984	15,558	-11.4%
1935	4,645	1960	17,278	1985	13,743	-11.7%
1936	4,426	1961	16,528	1986	14,858	8.1%
1937	5,008	1962	15,484	1987	14,224	-4.3%
1938	5,874	1963	16,241	1988	14,973	5.3%
1939	6,603	1964	15,306	1989	16,036	7.1%
1940	6,049	1965	16,922	1990	16,236	1.2%
1941	5,627	1966	18,023	1991	16,810	3.5%
1942	5,733	1967	18,137	1992	16,877	0.4%
1943	4,794	1968	18,745	1993	15,270	-9.5%
1944	3,721	1969	17,463	1994	15,217	-0.3%
1945	5,885	1970	18,069	1995	14,346	-5.7%
1946	9,133	1971	17,802	1996	14,354	0.1%
1947	9,900	1972	19,622	1997	15,275	6.4%
1948	11,440	1973	19,185	1998	15,141	-0.9%
1949	12,150	1974	23,514	1999	15,685	3.6%
1950	11,943	1975	23,904	2000	15,271	-2.6%
1951	12,568	1976	19,727	2001	17,095	11.9%
1952	14,048	1977	19,535	2002	18,372	7.5%
1953	15,016	1978	18,776	2003	16,984	-7.6%

Note: Headcount is the number of individual students (unduplicated).

Source: The Los Angeles Community College District Office of Institutional Research and Information, <http://research.laccd.edu/research/>

Credit Census Headcount Los Angeles City College and Los Angeles Community College District Fall 1974 - Fall 2003

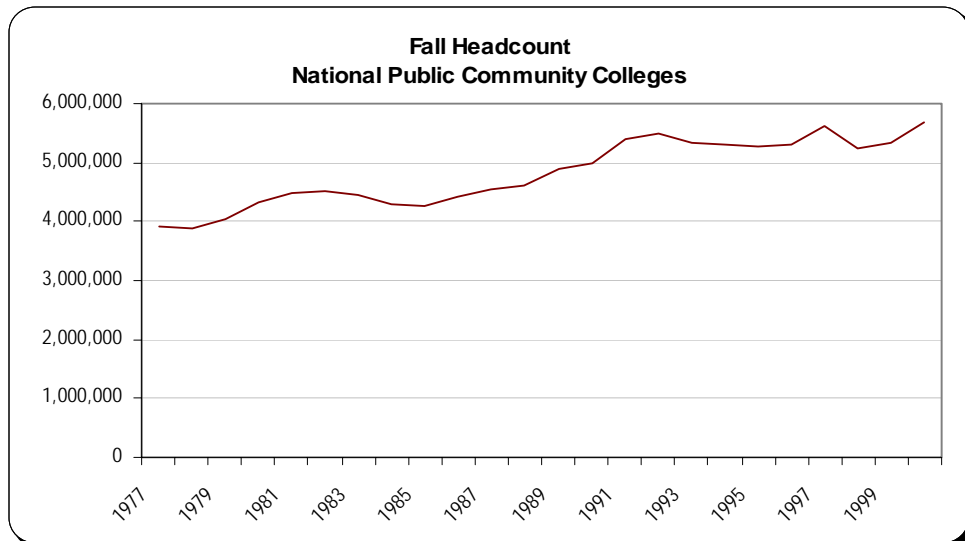
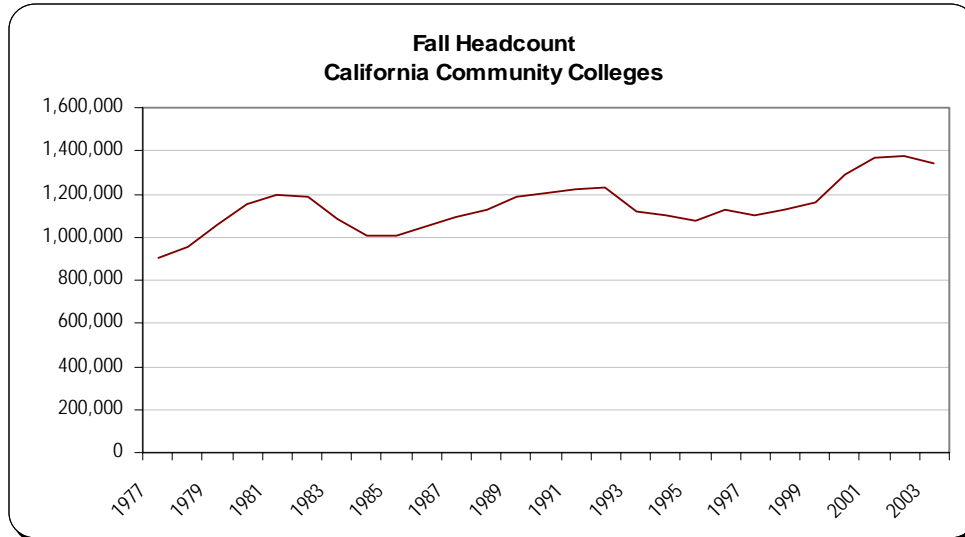


Fall	City	District	Fall	City	District	Fall	City	District
1973	19,185	108,922	1984	15,558	102,313	1995	14,346	98,104
1974	23,514	102,839	1985	13,743	93,026	1996	14,354	99,358
1975	23,904	137,031	1986	14,858	103,336	1997	15,275	101,647
1976	19,727	126,143	1987	14,224	102,912	1998	15,141	99,165
1977	19,535	129,296	1988	14,973	105,678	1999	15,685	102,075
1978	18,776	124,523	1989	16,036	108,880	2000	15,271	112,155
1979	18,701	130,896	1990	16,236	111,485	2001	17,095	119,433
1980	20,174	134,622	1991	16,810	117,994	2002	18,372	128,013
1981	20,492	139,168	1992	16,877	116,251	2003	16,984	122,441
1982	20,169	135,644	1993	15,270	102,800			
1983	17,568	119,569	1994	15,217	101,378			

Note: Headcount is the number of individual students (unduplicated).

Source: The Los Angeles Community College District Office of Institutional Research and Information, <http://research.laccd.edu/research/>

**Fall Headcount
State Community Colleges and National Community Colleges
Fall 1977 - Fall 2003**



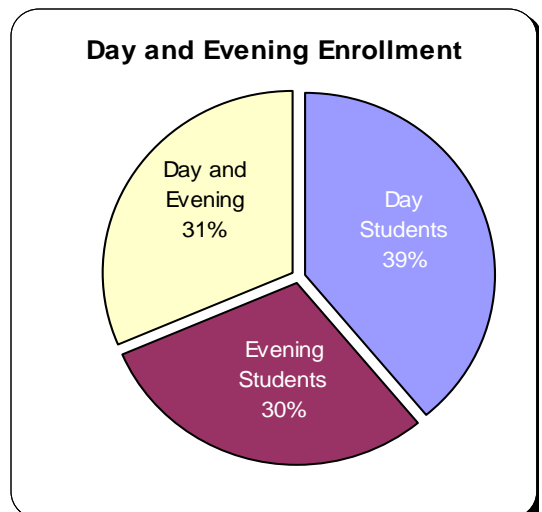
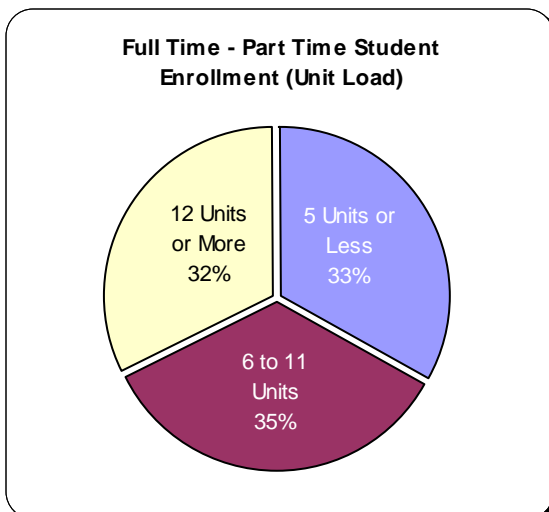
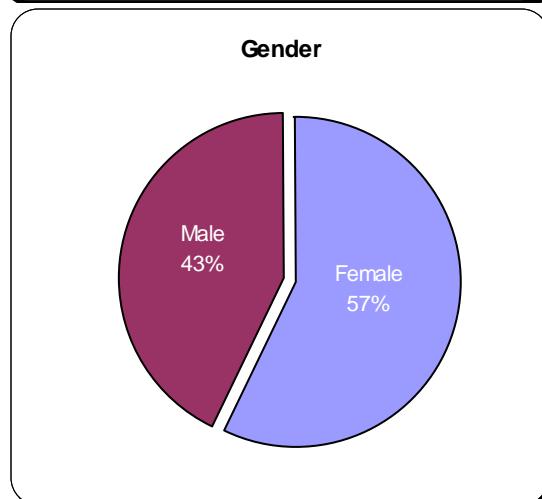
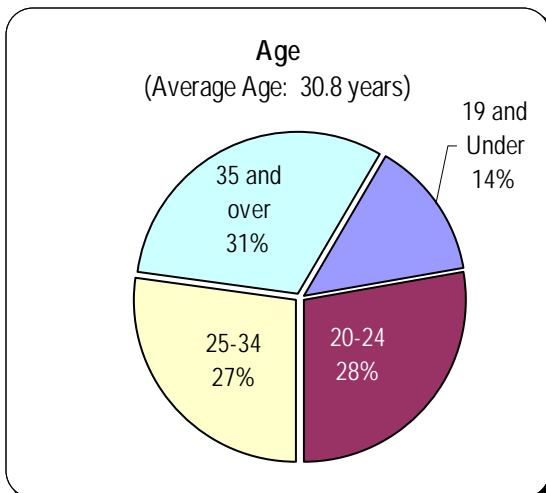
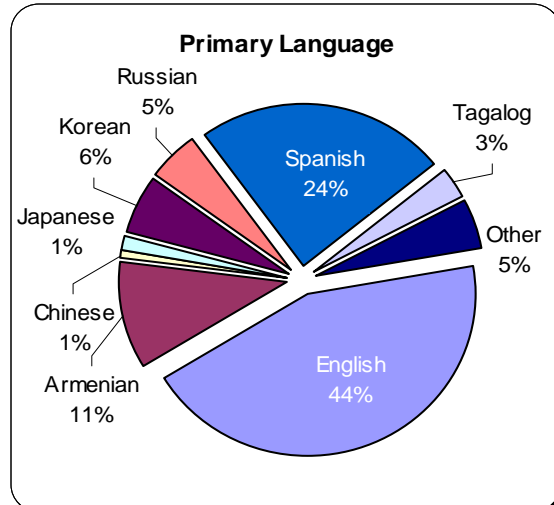
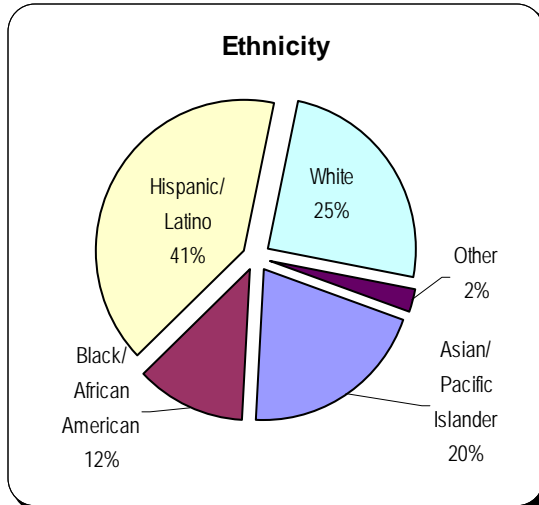
Fall	CA CC	U.S. CC	Fall	CA CC	U.S. CC	Fall	CA CC	U.S. CC
1977	901,763	3,901,769	1986	1,045,296	4,414,129	1995	1,075,906	5,272,056
1978	953,287	3,873,690	1987	1,088,308	4,541,054	1996	1,126,507	5,314,463
1979	1,062,185	4,056,810	1988	1,123,820	4,615,487	1997	1,102,552	5,605,569
1980	1,149,429	4,328,782	1989	1,184,209	4,883,660	1998	1,123,701	5,245,963
1981	1,197,685	4,480,708	1990	1,204,767	4,996,471	1999	1,159,952	5,339,449
1982	1,187,167	4,519,653	1991	1,217,539	5,404,815	2000	1,291,617	5,697,388
1983	1,083,323	4,459,330	1992	1,227,173	5,485,484	2001	1,371,542	n/a
1984	1,002,219	4,279,097	1993	1,116,110	5,337,328	2002	1,376,581	n/a
1985	1,005,439	4,269,733	1994	1,101,342	5,308,366	2003	1,342,615	n/a

Sources: California Postsecondary Education Commission (CPEC) online data:
<http://www.cpec.ca.gov/OnLineData/OnLineData.asp>
 and Digest of Education Statistics, 2003, Chapter 3. Postsecondary Education, National Center for Educational Statistics.

Student Profile

Fall 2003

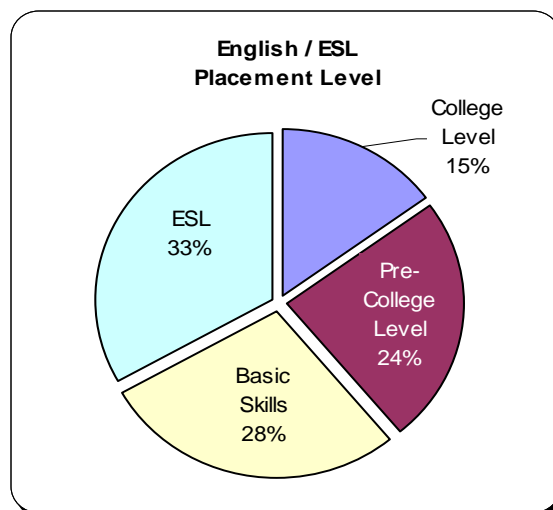
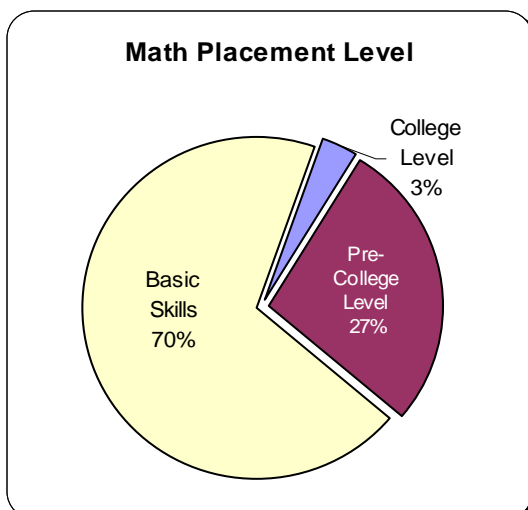
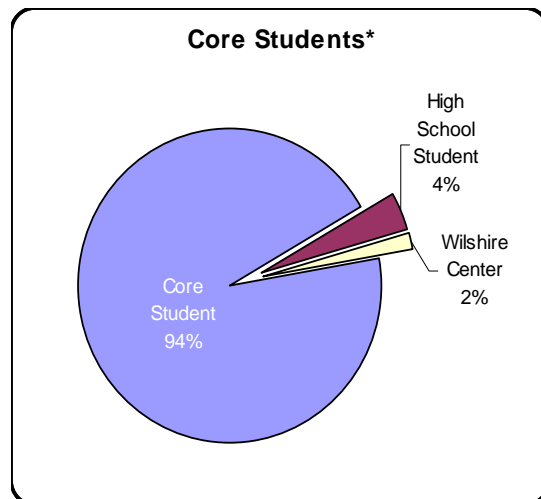
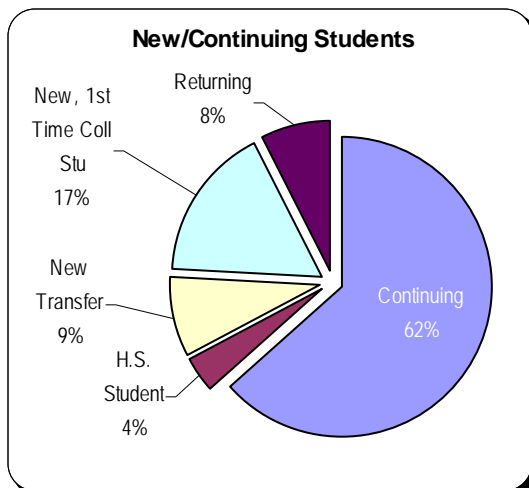
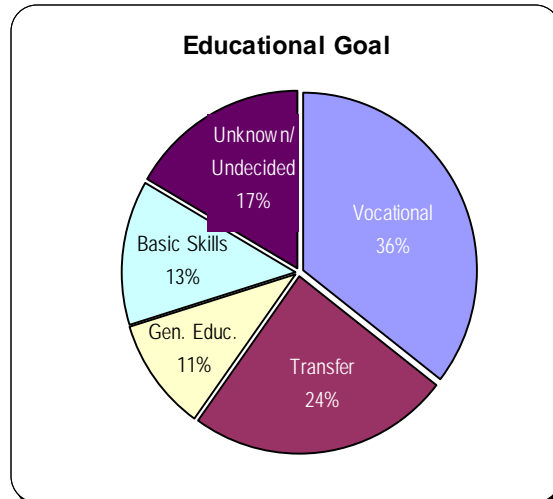
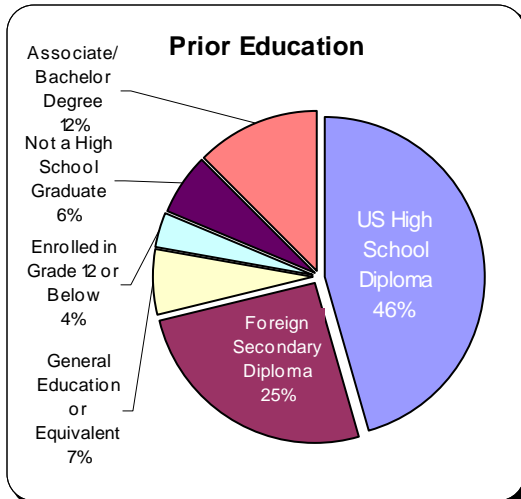
(Headcount: 16,984)



Source: The Los Angeles Community College District Student Information System (SIS)

Student Profile
Fall 2003

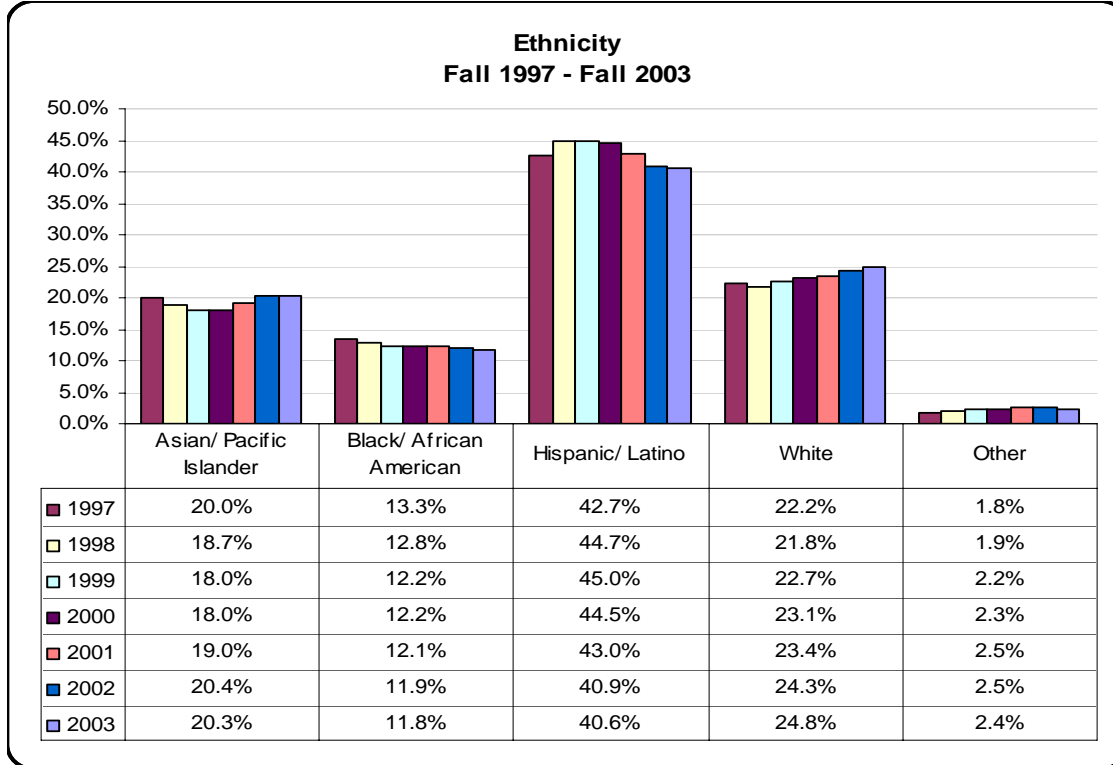
(Headcount: 16,984)



* **Note:** See page 22 for further detail on Core Students.

Source: The Los Angeles Community College District Student Information System (SIS)

Ethnicity Distribution

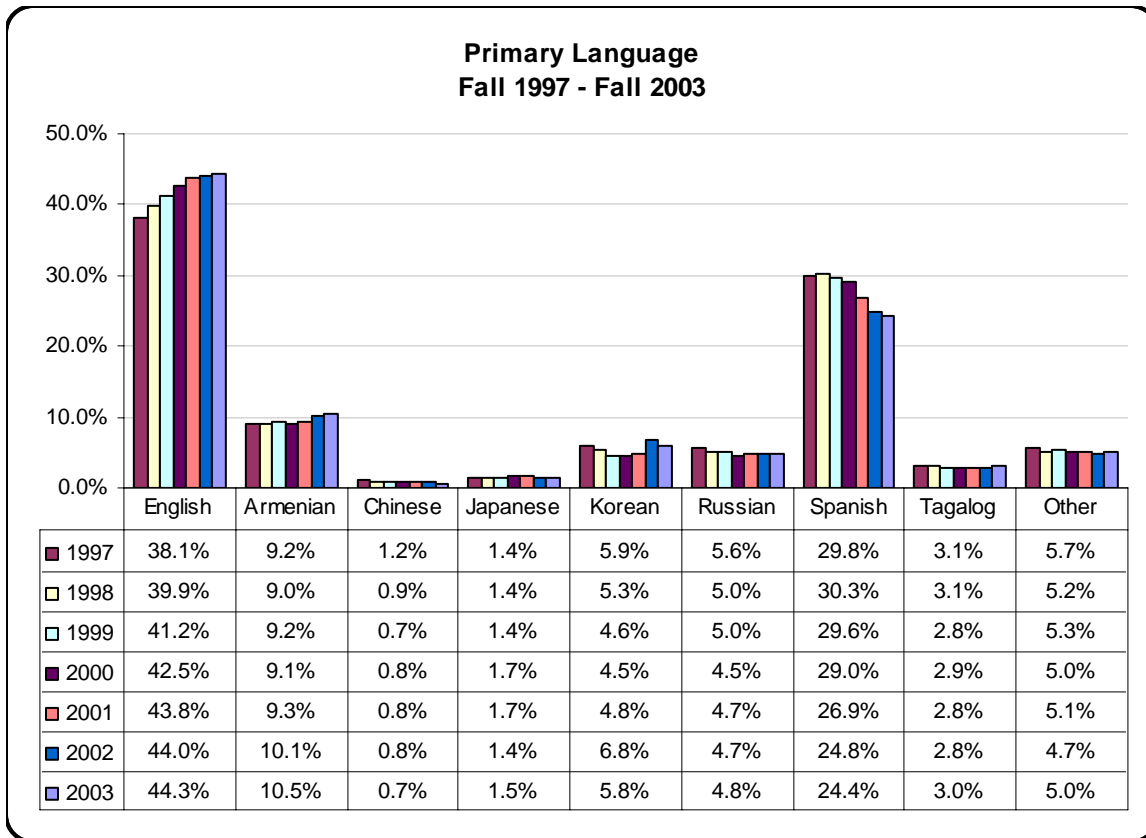


Fall	Asian/ Pacific Islander		Black/ African American		Hispanic/ Latino		White		Other		Total
1980	4,183	20.7%	7,093	35.2%	3,973	19.7%	4,306	21.3%	619	3.1%	20,174
1981	4,449	21.7%	6,352	31.0%	4,388	21.4%	4,445	21.7%	858	4.2%	20,492
1982	4,452	22.1%	5,883	29.2%	4,494	22.3%	4,456	22.1%	884	4.4%	20,169
1983	3,976	22.6%	4,893	27.9%	4,159	23.7%	3,704	21.1%	835	4.8%	17,568
1984	4,056	26.1%	3,647	23.4%	3,951	25.4%	3,151	20.3%	754	4.8%	15,558
1985	3,742	27.2%	2,872	20.9%	3,678	26.8%	2,752	20.0%	699	5.1%	13,743
1986	3,922	26.4%	2,895	19.5%	4,361	29.4%	3,012	20.3%	667	4.5%	14,858
1987	3,796	26.7%	2,661	18.7%	4,340	30.5%	2,747	19.3%	681	4.8%	14,224
1988	3,921	26.2%	2,595	17.3%	4,988	33.3%	2,830	18.9%	639	4.3%	14,973
1989	4,049	25.3%	2,584	16.1%	5,802	36.2%	2,982	18.6%	618	3.9%	16,035
1990	4,028	24.8%	2,476	15.3%	6,217	38.3%	3,111	19.2%	404	2.5%	16,236
1991	4,183	24.9%	2,494	14.8%	6,515	38.8%	3,307	19.7%	311	1.9%	16,810
1992	4,316	25.6%	2,444	14.5%	6,478	38.4%	3,360	19.9%	279	1.7%	16,877
1993	3,633	23.8%	2,212	14.5%	5,983	39.2%	3,191	20.9%	251	1.6%	15,270
1994	3,429	22.5%	2,258	14.8%	6,016	39.5%	3,270	21.5%	243	1.6%	15,217
1995	3,082	21.5%	2,097	14.6%	5,843	40.7%	3,090	21.5%	235	1.6%	14,346
1996	2,950	20.5%	1,974	13.8%	5,980	41.7%	3,231	22.5%	219	1.5%	14,354
1997	3,056	20.0%	2,035	13.3%	6,520	42.7%	3,386	22.2%	278	1.8%	15,275
1998	2,835	18.7%	1,935	12.8%	6,772	44.7%	3,307	21.8%	292	1.9%	15,141
1999	2,823	18.0%	1,911	12.2%	7,051	45.0%	3,557	22.7%	342	2.2%	15,685
2000	2,753	18.0%	1,860	12.2%	6,790	44.5%	3,522	23.1%	347	2.3%	15,271
2001	3,130	19.0%	1,997	12.1%	7,062	43.0%	3,846	23.4%	405	2.5%	16,440
2002	3,595	20.4%	2,097	11.9%	7,202	40.9%	4,282	24.3%	436	2.5%	17,612
2003	3,310	20.3%	1,928	11.8%	6,617	40.6%	4,047	24.8%	395	2.4%	16,297

Note: Totals exclude unknown ethnicity.

Source: The Los Angeles Community College District Office of Institutional Research and Information,
<http://research.laccd.edu/research/>

Primary Language Distribution

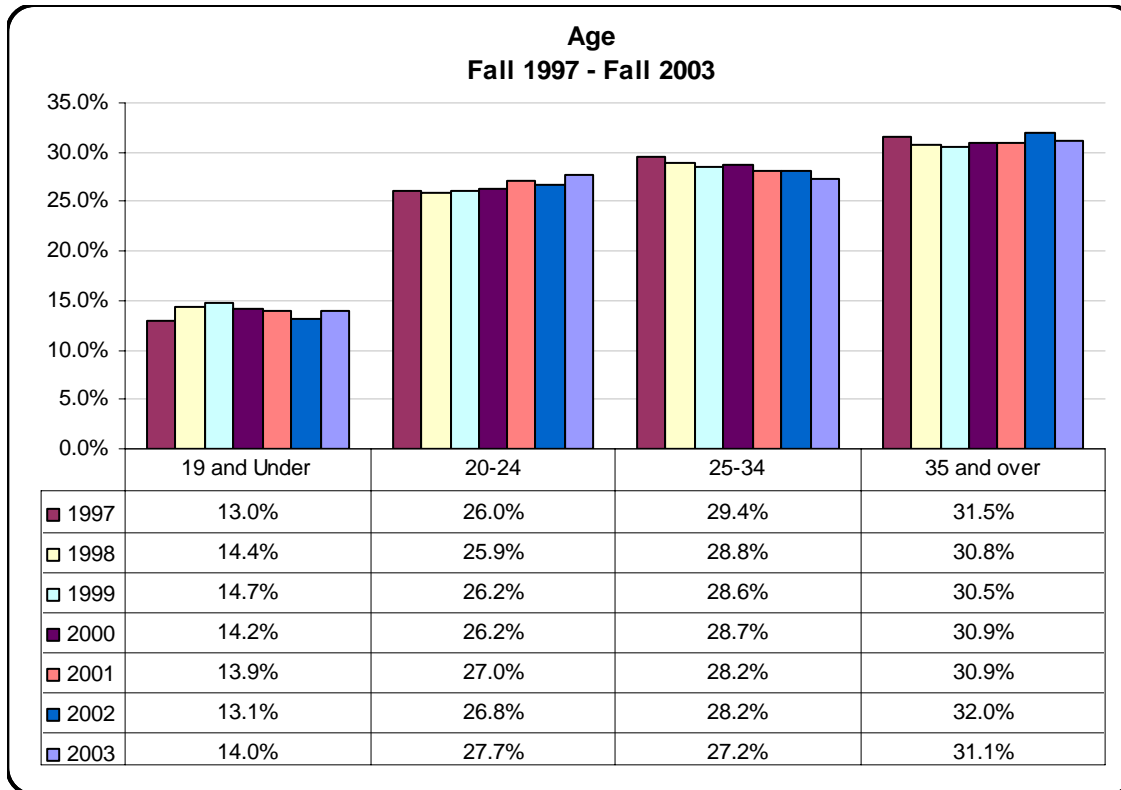


Fall	English	Armenian	Chinese	Japanese	Korean	Russian	Spanish	Tagalog	Other	Total
1992	6,558 38.9%	1,320 7.8%	326 1.9%	299 1.8%	1,152 6.8%	325 1.9%	4,680 27.7%	972 5.8%	1,246 7.4%	16,877
1993	5,789 37.9%	1,444 9.5%	296 1.9%	284 1.9%	993 6.5%	380 2.5%	4,261 27.9%	748 4.9%	1,074 7.0%	15,270
1994	5,821 38.3%	1,499 9.9%	254 1.7%	244 1.6%	1,028 6.8%	522 3.4%	4,250 27.9%	616 4.0%	982 6.5%	15,217
1995	5,590 39.0%	1,326 9.2%	208 1.4%	241 1.7%	880 6.1%	653 4.5%	4,064 28.3%	470 3.3%	913 6.4%	14,346
1996	5,521 38.5%	1,335 9.3%	189 1.3%	227 1.6%	819 5.7%	763 5.3%	4,236 29.5%	427 3.0%	839 5.8%	14,354
1997	5,826 38.1%	1,399 9.2%	181 1.2%	214 1.4%	895 5.9%	851 5.6%	4,559 29.8%	472 3.1%	877 5.7%	15,275
1998	6,040 39.9%	1,368 9.0%	129 0.9%	210 1.4%	800 5.3%	751 5.0%	4,590 30.3%	464 3.1%	790 5.2%	15,141
1999	6,468 41.2%	1,443 9.2%	115 0.7%	226 1.4%	727 4.6%	787 5.0%	4,646 29.6%	442 2.8%	830 5.3%	15,685
2000	6,496 42.5%	1,387 9.1%	121 0.8%	253 1.7%	689 4.5%	691 4.5%	4,435 29.0%	437 2.9%	762 5.0%	15,271
2001	7,396 43.8%	1,577 9.3%	140 0.8%	283 1.7%	813 4.8%	797 4.7%	4,551 26.9%	479 2.8%	869 5.1%	16,905
2002	7,960 44.0%	1,820 10.1%	145 0.8%	256 1.4%	1,223 6.8%	851 4.7%	4,489 24.8%	511 2.8%	853 4.7%	18,108
2003	7,453 44.3%	1,770 10.5%	115 0.7%	246 1.5%	982 5.8%	816 4.8%	4,105 24.4%	500 3.0%	839 5.0%	16,826

Note: Totals exclude unknown primary language.

Source: The Los Angeles Community College District Office of Institutional Research and Information, <http://research.laccd.edu/research/>

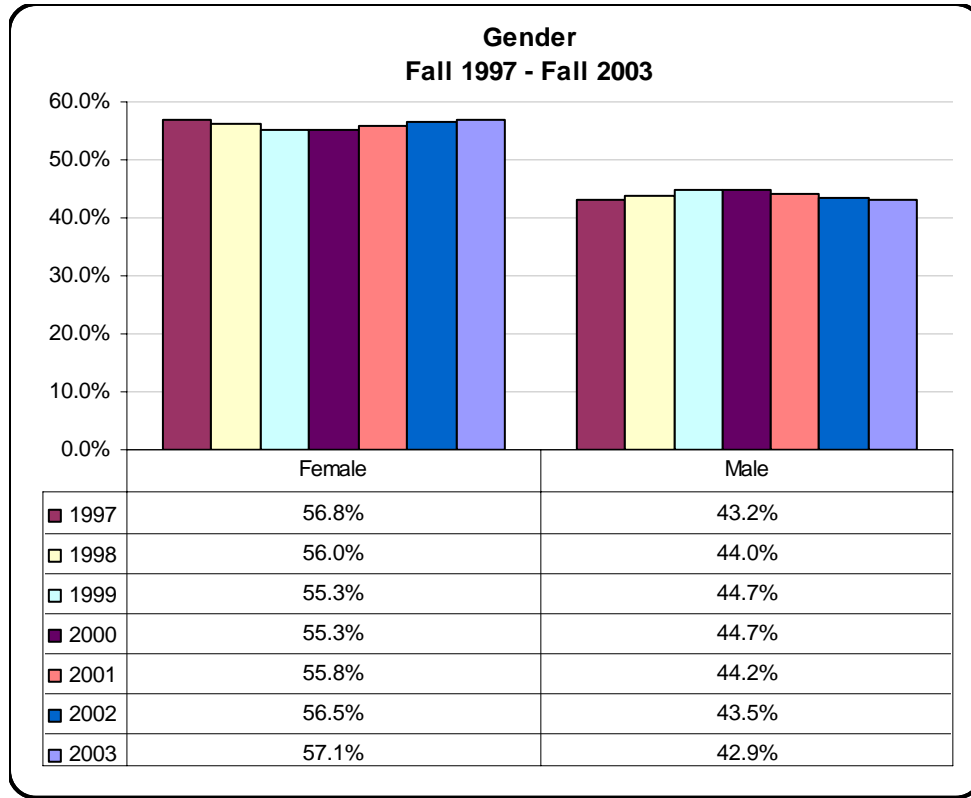
Age Distribution



Fall	19 and Under		20-24		25-34		35 and over		Total
1980	3,448	17.1%	6,227	30.9%	6,684	33.1%	3,815	18.9%	20,174
1981	3,253	15.9%	6,266	30.6%	6,986	34.1%	3,988	19.5%	20,492
1982	3,233	16.0%	6,155	30.5%	6,834	33.9%	3,947	19.6%	20,169
1983	2,768	15.8%	5,410	30.8%	6,000	34.2%	3,390	19.3%	17,568
1984	2,221	14.3%	4,829	31.0%	5,282	33.9%	3,226	20.7%	15,558
1985	1,876	13.7%	4,355	31.7%	4,696	34.2%	2,816	20.5%	13,743
1986	1,986	13.4%	4,570	30.8%	5,147	34.6%	3,155	21.2%	14,858
1987	2,102	14.8%	4,267	30.0%	4,795	33.7%	3,060	21.5%	14,224
1988	1,985	13.3%	4,392	29.3%	5,176	34.6%	3,420	22.8%	14,973
1989	1,984	12.4%	4,660	29.1%	5,514	34.4%	3,878	24.2%	16,036
1990	1,925	11.9%	4,713	29.0%	5,579	34.4%	4,020	24.8%	16,236
1991	1,926	11.5%	4,970	29.6%	5,782	34.4%	4,132	24.6%	16,810
1992	1,849	11.0%	5,043	29.9%	5,714	33.9%	4,271	25.3%	16,877
1993	1,485	9.7%	4,714	30.9%	5,087	33.3%	3,985	26.1%	15,270
1994	1,586	10.4%	4,595	30.2%	4,808	31.6%	4,228	27.8%	15,217
1995	1,484	10.3%	4,149	28.9%	4,630	32.3%	4,082	28.5%	14,346
1996	1,474	10.3%	4,008	27.9%	4,474	31.2%	4,398	30.6%	14,354
1997	1,980	13.0%	3,961	26.0%	4,478	29.4%	4,788	31.5%	15,207
1998	2,186	14.4%	3,926	25.9%	4,367	28.8%	4,662	30.8%	15,141
1999	2,271	14.7%	4,044	26.2%	4,411	28.6%	4,717	30.5%	15,443
2000	2,169	14.2%	4,003	26.2%	4,376	28.7%	4,723	30.9%	15,271
2001	2,380	13.9%	4,621	27.0%	4,819	28.2%	5,275	30.9%	17,095
2002	2,405	13.1%	4,921	26.8%	5,176	28.2%	5,872	32.0%	18,374
2003	2,373	14.0%	4,705	27.7%	4,628	27.2%	5,278	31.1%	16,984

Source: The Los Angeles Community College District Office of Institutional Research and Information, <http://research.laccd.edu/research/>

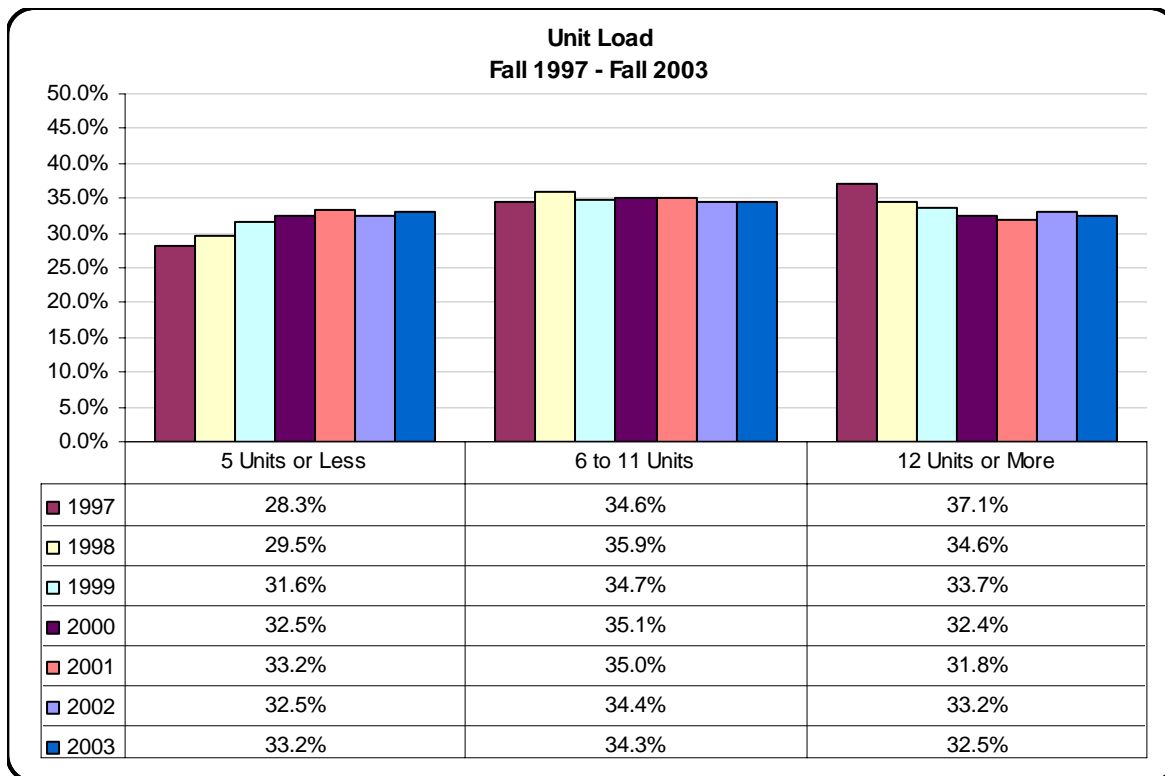
Gender Distribution



Fall	Female	Male	Total
1980	10,703 53.1%	9,471 46.9%	20,174
1981	10,583 51.6%	9,909 48.4%	20,492
1982	10,367 51.4%	9,802 48.6%	20,169
1983	9,100 51.8%	8,468 48.2%	17,568
1984	7,997 51.4%	7,561 48.6%	15,558
1985	7,016 51.1%	6,727 48.9%	13,743
1986	7,507 50.5%	7,351 49.5%	14,858
1987	7,247 50.9%	6,977 49.1%	14,224
1988	7,638 51.0%	7,335 49.0%	14,973
1989	8,197 51.1%	7,838 48.9%	16,036
1990	8,495 52.3%	7,741 47.7%	16,236
1991	8,940 53.2%	7,870 46.8%	16,810
1992	9,048 53.6%	7,829 46.4%	16,877
1993	8,107 53.1%	7,163 46.9%	15,270
1994	8,199 53.9%	7,018 46.1%	15,217
1995	7,738 53.9%	6,608 46.1%	14,346
1996	7,957 55.4%	6,397 44.6%	14,354
1997	8,683 56.8%	6,592 43.2%	15,275
1998	8,485 56.0%	6,656 44.0%	15,141
1999	8,674 55.3%	7,011 44.7%	15,685
2000	8,445 55.3%	6,826 44.7%	15,271
2001	9,545 55.8%	7,550 44.2%	17,095
2002	10,378 56.5%	7,996 43.5%	18,374
2003	9,692 57.1%	7,292 42.9%	16,984

Source: The Los Angeles Community College District Office of Institutional Research and Information, <http://research.laccd.edu/research/>

Unit Load Distribution

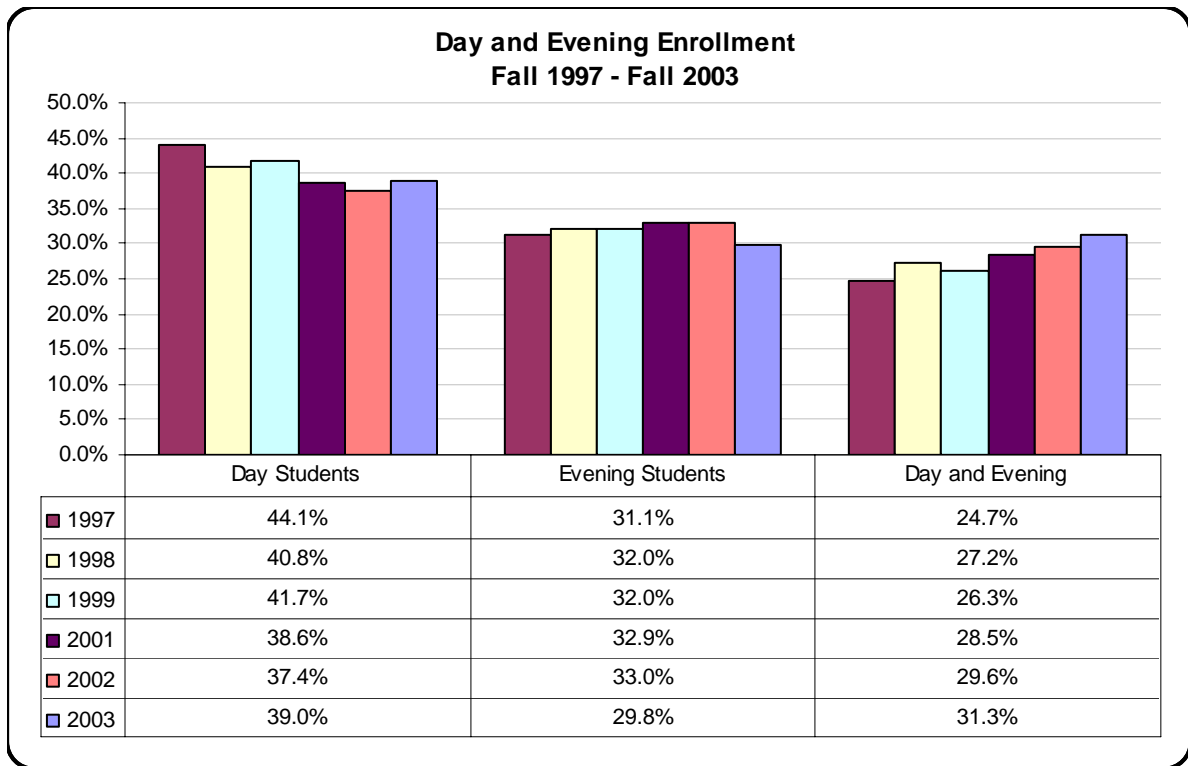


Fall	5 Units or Less		6 to 11 Units		12 Units or More		Total
1980	6,851	34.0%	7,111	35.2%	6,212	30.8%	20,174
1981	6,954	33.9%	7,242	35.3%	6,296	30.7%	20,492
1982	6,874	34.1%	7,228	35.8%	6,067	30.1%	20,169
1983	5,712	32.5%	6,321	36.0%	5,536	31.5%	17,568
1984	5,236	33.7%	5,283	34.0%	5,039	32.4%	15,558
1985	4,556	33.2%	4,732	34.4%	4,455	32.4%	13,743
1986	5,166	34.8%	5,352	36.0%	4,340	29.2%	14,858
1987	4,815	33.9%	4,974	35.0%	4,435	31.2%	14,224
1988	5,228	34.9%	5,627	37.6%	4,118	27.5%	14,973
1989	5,362	33.4%	5,959	37.2%	4,715	29.4%	16,036
1990	5,574	34.3%	5,951	36.7%	4,711	29.0%	16,236
1991	5,847	34.8%	6,096	36.3%	4,867	29.0%	16,810
1992	5,684	33.7%	6,159	36.5%	5,034	29.8%	16,877
1993	4,447	29.1%	5,724	37.5%	5,099	33.4%	15,270
1994	4,499	29.6%	5,536	36.4%	5,182	34.1%	15,217
1995	4,011	28.0%	5,256	36.6%	5,079	35.4%	14,346
1996	4,136	28.8%	5,333	37.2%	4,886	34.0%	14,354
1997	4,323	28.3%	5,285	34.6%	5,667	37.1%	15,275
1998	4,473	29.5%	5,435	35.9%	5,233	34.6%	15,141
1999	4,950	31.6%	5,449	34.7%	5,286	33.7%	15,685
2000	4,963	32.5%	5,367	35.1%	4,941	32.4%	15,271
2001	5,679	33.2%	5,980	35.0%	5,436	31.8%	17,095
2002	5,964	32.5%	6,311	34.4%	6,097	33.2%	18,372
2003	5,633	33.2%	5,833	34.3%	5,518	32.5%	16,984

Note: Student course load is the number of units in which a student is enrolled; used for determining full-time/part-time status.

Source: The Los Angeles Community College District Office of Institutional Research and Information, <http://research.laccd.edu/research/>

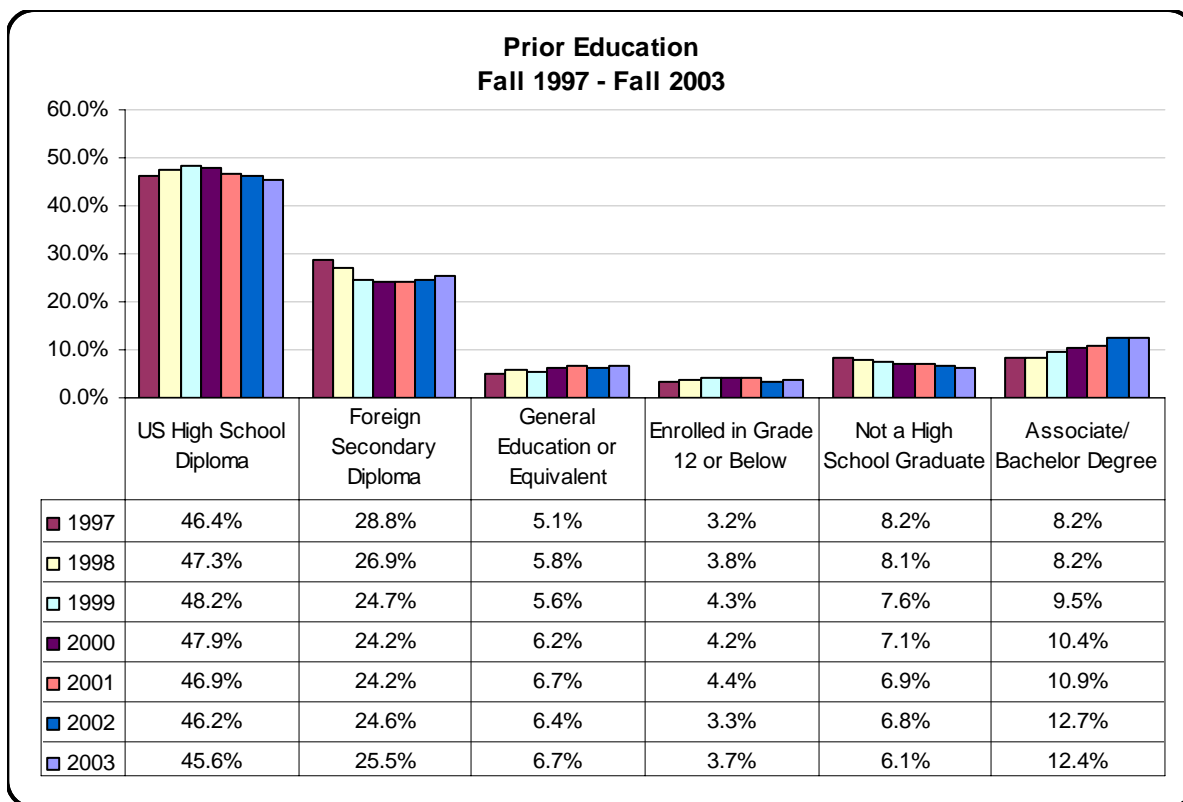
Day and Evening Enrollment Distribution



Fall	Day Students		Evening Students		Day and Evening		Total
1980	9,773	48.4%	7,769	38.5%	2,631	13.0%	20,174
1981	9,936	48.5%	7,869	38.4%	2,687	13.1%	20,492
1982	10,538	52.3%	6,938	34.4%	2,693	13.4%	20,169
1983	9,392	53.5%	5,619	32.0%	2,557	14.6%	17,568
1984	7,880	50.6%	5,452	35.0%	2,226	14.3%	15,558
1985	6,873	50.0%	4,581	33.3%	2,289	16.7%	13,743
1986	7,171	48.3%	5,088	34.2%	2,600	17.5%	14,858
1987	7,094	49.9%	4,424	31.1%	2,706	19.0%	14,224
1988	7,257	48.5%	4,991	33.3%	2,724	18.2%	14,973
1989	8,009	49.9%	4,818	30.0%	3,209	20.0%	16,036
1990	7,700	47.4%	5,722	35.2%	2,814	17.3%	16,236
1991	8,205	48.8%	5,538	32.9%	3,066	18.2%	16,810
1992	8,378	49.6%	5,242	31.1%	3,257	19.3%	16,877
1993	7,624	49.9%	4,805	31.5%	2,841	18.6%	15,270
1994	7,394	48.6%	4,673	30.7%	3,150	20.7%	15,217
1995	6,916	48.2%	4,266	29.7%	3,164	22.1%	14,346
1996	6,735	46.9%	4,385	30.6%	3,234	22.5%	14,354
1997	6,740	44.1%	4,756	31.1%	3,779	24.7%	15,275
1998	6,176	40.8%	4,841	32.0%	4,124	27.2%	15,141
1999	6,447	41.7%	4,942	32.0%	4,054	26.3%	15,443
2000	6,292	41.2%	4,245	27.8%	4,673	30.6%	15,271
2001	6,593	38.6%	5,626	32.9%	4,876	28.5%	17,095
2002	6,879	37.4%	6,061	33.0%	5,434	29.6%	18,374
2003	6,621	39.0%	5,055	29.8%	5,308	31.3%	16,984

Source: The Los Angeles Community College District Office of Institutional Research and Information, <http://research.laccd.edu/research/>

Prior Education Distribution

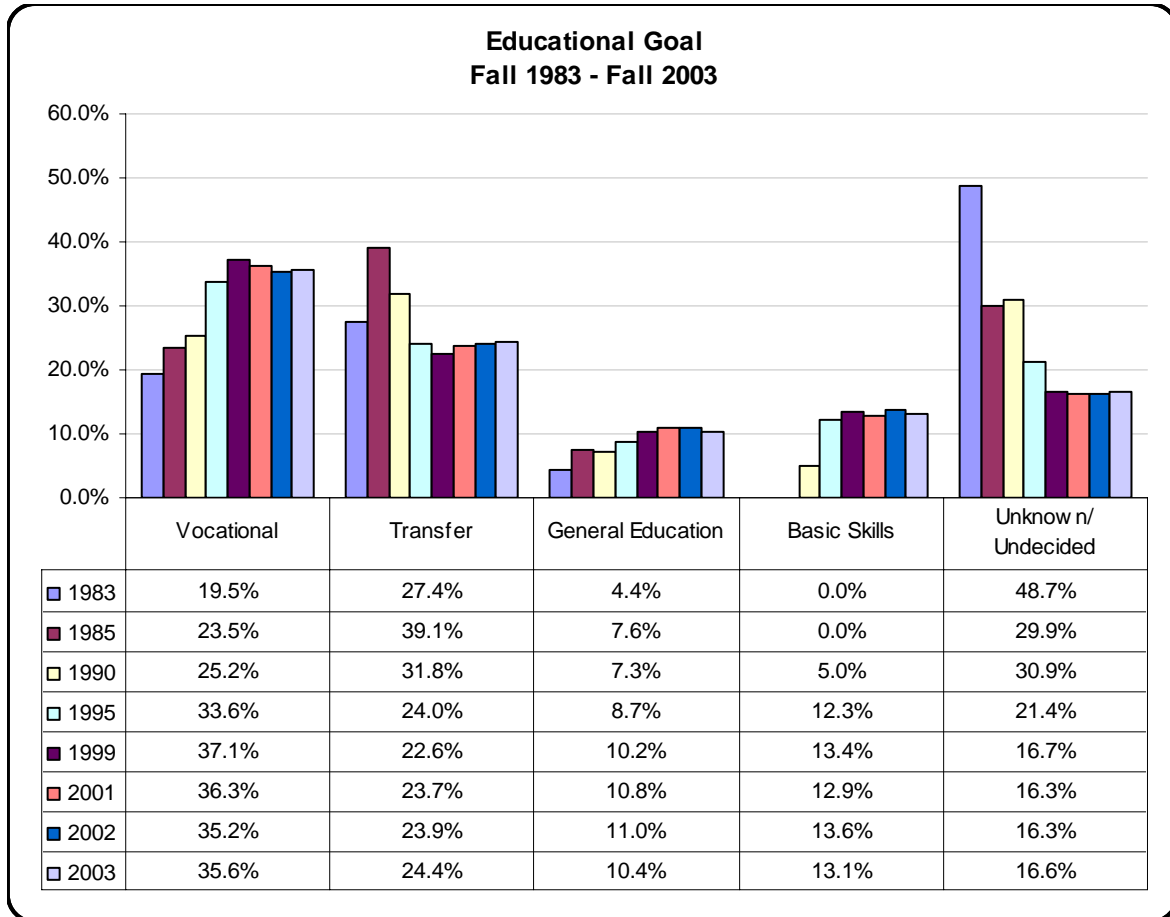


Fall	US High School Diploma	Foreign Secondary Diploma	General Education or Equivalent	Enrolled in Grade 12 or Below	Not a High School Graduate	Associate/ Bachelor Degree	Total
1990	8,055 49.6%	3,485 21.5%	803 4.9%	120 0.7%	1,707 10.5%	2,067 12.7%	16,236
1991	7,738 46.0%	4,142 24.6%	817 4.9%	179 1.1%	1,713 10.2%	2,220 13.2%	16,810
1992	7,528 44.6%	4,583 27.2%	824 4.9%	207 1.2%	1,624 9.6%	2,111 12.5%	16,877
1993	7,098 46.5%	4,623 30.3%	758 5.0%	123 0.8%	1,410 9.2%	1,258 8.2%	15,270
1994	7,290 47.9%	4,675 30.7%	764 5.0%	153 1.0%	1,313 8.6%	1,022 6.7%	15,217
1995	6,911 48.2%	4,387 30.6%	811 5.7%	74 0.5%	1,138 7.9%	1,024 7.1%	14,346
1996	6,925 48.2%	4,251 29.6%	788 5.5%	113 0.8%	1,149 8.0%	1,128 7.9%	14,354
1997	7,094 46.4%	4,397 28.8%	784 5.1%	496 3.2%	1,249 8.2%	1,255 8.2%	15,275
1998	7,165 47.3%	4,077 26.9%	873 5.8%	569 3.8%	1,220 8.1%	1,237 8.2%	15,141
1999	7,450 48.2%	3,822 24.7%	865 5.6%	659 4.3%	1,180 7.6%	1,467 9.5%	15,443
2000	7,316 47.9%	3,701 24.2%	942 6.2%	634 4.2%	1,085 7.1%	1,593 10.4%	15,271
2001	7,867 46.9%	4,059 24.2%	1,131 6.7%	734 4.4%	1,165 6.9%	1,835 10.9%	16,791
2002	8,307 46.2%	4,416 24.6%	1,151 6.4%	589 3.3%	1,228 6.8%	2,277 12.7%	17,968
2003	7,215 45.6%	4,029 25.5%	1,059 6.7%	587 3.7%	970 6.1%	1,964 12.4%	15,824

Note: Totals exclude unknown prior education.

Source: The Los Angeles Community College District Office of Institutional Research and Information, <http://research.laccd.edu/research/>

Educational Goal Distribution



Fall	Vocational		Transfer		General Education		Basic Skills		Unknown/Undecided		Total
1983	3,426	19.5%	4,814	27.4%	773	4.4%	0	0.0%	8,556	48.7%	17,568
1985	3,230	23.5%	5,374	39.1%	1,044	7.6%	0	0.0%	4,109	29.9%	13,743
1990	4,091	25.2%	5,163	31.8%	1,185	7.3%	812	5.0%	5,017	30.9%	16,236
1995	4,820	33.6%	3,443	24.0%	1,248	8.7%	1,765	12.3%	3,070	21.4%	14,346
1999	5,819	37.1%	3,545	22.6%	1,600	10.2%	2,102	13.4%	2,619	16.7%	15,685
2001	6,204	36.3%	4,049	23.7%	1,848	10.8%	2,213	12.9%	2,781	16.3%	17,095
2002	6,466	35.2%	4,393	23.9%	2,015	11.0%	2,499	13.6%	3,001	16.3%	18,374
2003	6,038	35.6%	4,144	24.4%	1,760	10.4%	2,224	13.1%	2,818	16.6%	16,984

Source: The Los Angeles Community College District Office of Institutional Research and Information, <http://research.laccd.edu/research/>

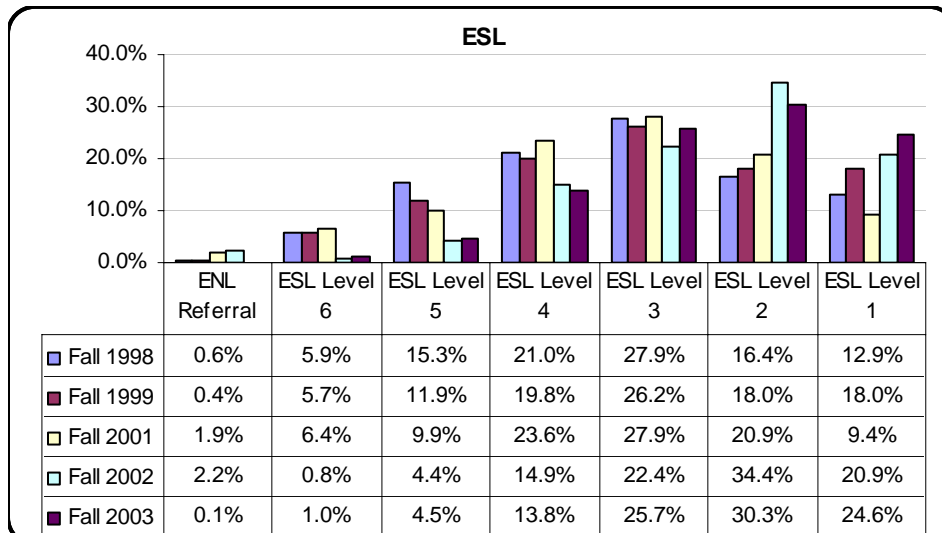
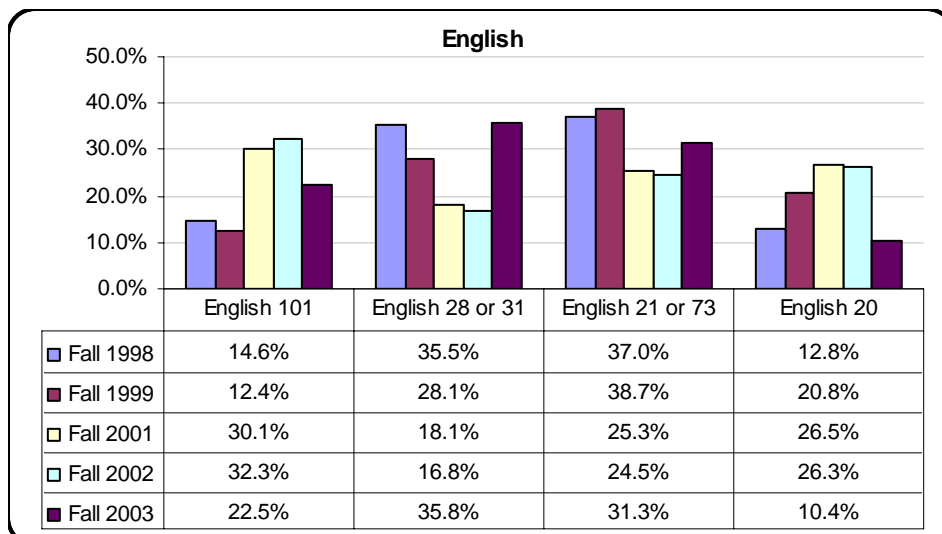
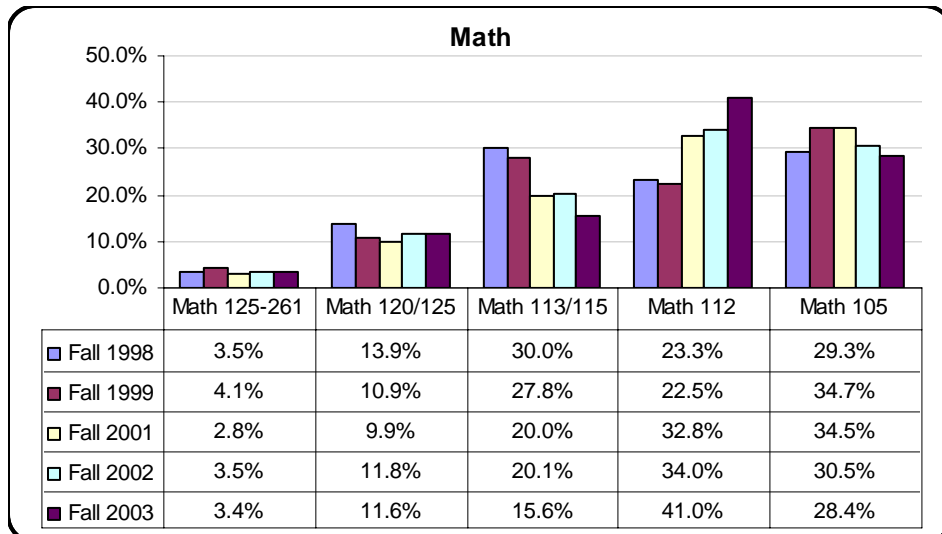
Assessment and Placement Summary Math, English, and ESL Fall 1998, Fall 1999, Fall 2001, Fall 2002 and Fall 2003

		MATH									
Course Level	Recommended Placement	Fall 1998		Fall 1999		Fall 2001		Fall 2002		Fall 2003	
College Level	Math 125-261	117	3.5%	76	4.1%	66	2.8%	154	3.5%	100	3.4%
Pre-College Level	Math 120/125	463	13.9%	200	10.9%	231	9.9%	523	11.8%	343	11.6%
Pre-College Level	Math 113/115	1,001	30.0%	513	27.8%	468	20.0%	889	20.1%	464	15.6%
Basic Skills	Math 112	777	23.3%	415	22.5%	767	32.8%	1,502	34.0%	1,216	41.0%
Basic Skills	Math 105	976	29.3%	639	34.7%	808	34.5%	1,346	30.5%	842	28.4%
<i>Total</i>		<i>3,334</i>	<i>100.0%</i>	<i>1,843</i>	<i>100%</i>	<i>2,340</i>	<i>100%</i>	<i>4,414</i>	<i>100%</i>	<i>2,965</i>	<i>100%</i>
		ENGLISH									
Course Level	Recommended Placement	Fall 1998		Fall 1999		Fall 2001		Fall 2002		Fall 2003	
College Level	English 101	391	14.6%	171	12.4%	627	30.1%	1,454	32.3%	617	22.5%
Pre-College Level	English 28 or 31	952	35.5%	387	28.1%	377	18.1%	757	16.8%	982	35.8%
Basic Skills	English 21 or 73	991	37.0%	533	38.7%	527	25.3%	1,104	24.5%	858	31.3%
Basic Skills	English 20	344	12.8%	287	20.8%	553	26.5%	1,182	26.3%	284	10.4%
<i>Total</i>		<i>2,678</i>	<i>100.0%</i>	<i>1,378</i>	<i>100.0%</i>	<i>2,084</i>	<i>100.0%</i>	<i>4,497</i>	<i>100.0%</i>	<i>2,741</i>	<i>100.0%</i>
		ESL									
Course Level	Recommended Placement	Fall 1998		Fall 1999		Fall 2001		Fall 2002		Fall 2003	
ESL	ENL Referral	7	0.6%	3	0.4%	15	1.9%	30	2.2%	1	0.1%
ESL	ESL Level 6	72	5.9%	48	5.7%	50	6.4%	11	0.8%	14	1.0%
ESL	ESL Level 5	186	15.3%	100	11.9%	77	9.9%	61	4.4%	61	4.5%
ESL	ESL Level 4	255	21.0%	167	19.8%	184	23.6%	207	14.9%	188	13.8%
ESL	ESL Level 3	339	27.9%	221	26.2%	218	27.9%	312	22.4%	349	25.7%
ESL	ESL Level 2	200	16.4%	152	18.0%	163	20.9%	479	34.4%	411	30.3%
ESL	ESL Level 1	157	12.9%	152	18.0%	73	9.4%	291	20.9%	334	24.6%
<i>Total</i>		<i>1,216</i>	<i>100.0%</i>	<i>843</i>	<i>100.0%</i>	<i>780</i>	<i>100.0%</i>	<i>1,391</i>	<i>100.0%</i>	<i>1,358</i>	<i>100.0%</i>

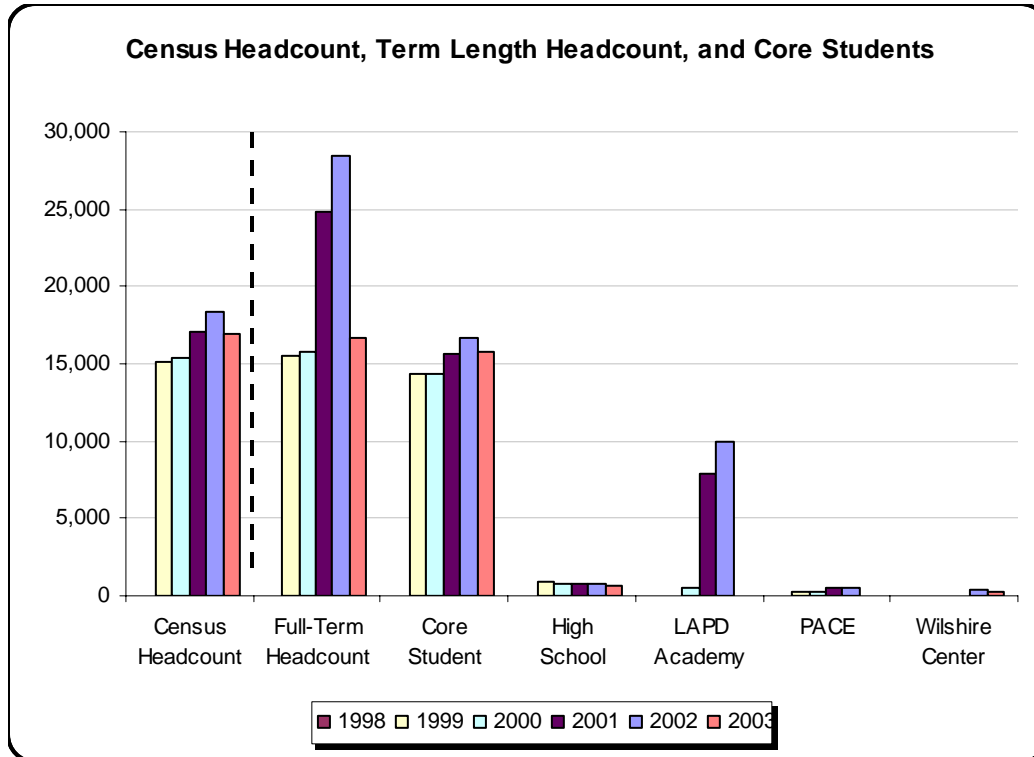
Source: The Los Angeles Community College District Student Information System (SIS)

**Assessment and Placement Summary
Math, English, and ESL**

Fall 1998, Fall 1999, Fall 2001, Fall 2002 and Fall 2003



Census Headcount, Full-Term Headcount, and Core Students Fall 1998 - Fall 2003



Fall	Census Headcount	Full-Term Headcount	Core Student	High School Student	LAPD Academy Program	PACE	Wilshire Center
1998	15,141	15,553 100.0%	14,388 92.5%	943 6.1%	0 0.0%	222 1.4%	0 0.0%
1999	15,443	15,821 100.0%	14,295 90.4%	758 4.8%	493 3.1%	275 1.7%	0 0.0%
2000	15,271	16,235 100.0%	14,214 87.6%	731 4.5%	972 6.0%	318 2.0%	0 0.0%
2001	17,095	24,815 100.0%	15,598 62.9%	780 3.1%	7,915 31.9%	522 2.1%	0 0.0%
2002	18,372	28,387 100.0%	16,741 59.0%	726 2.6%	9,956 35.1%	519 1.8%	445 1.6%
2003	16,984	16,711 100.0%	15,777 94.4%	653 3.9%	0 0.0%	0 0.0%	281 1.7%

Definitions:

- 1) Full-Term Headcount A count of students enrolled at any time during a term who received a grade or other transcriptable notation, including W.
- 2) Core Student Those students who are not enrolled in specialized academic programs, including PACE, the LAPD Academy program, and concurrently enrolled high school students. Core students are reported as a 'full term headcount,' which includes all students who received a grade or other transcriptable notation, including W.

Source: The Los Angeles Community College District Attendance Accounting Office, The Los Angeles Community College District Student Information System (SIS)