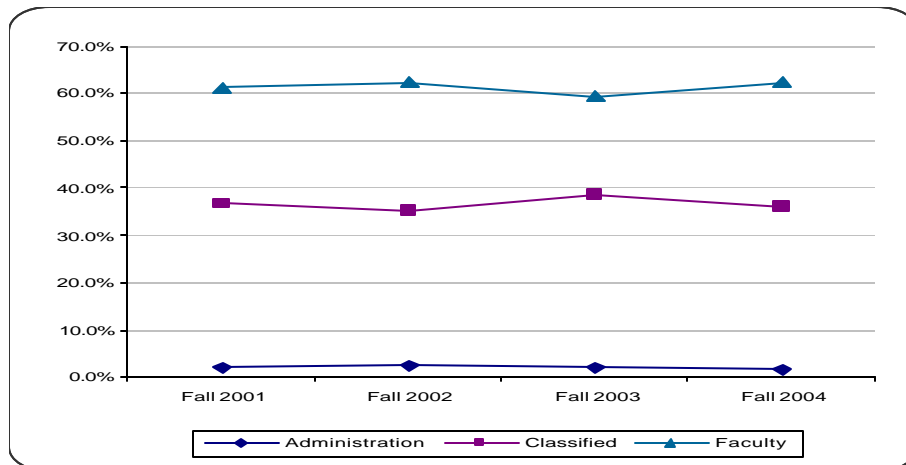
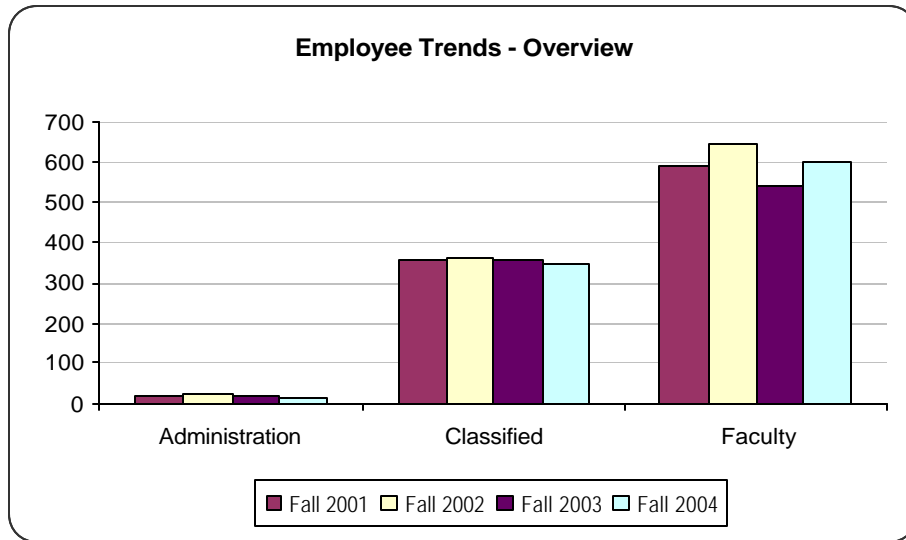


SECTION 6



EMPLOYEES

Employee Trends Fall 2000—Fall 2001—Fall 2002—Fall 2003—Fall 2004 Overview



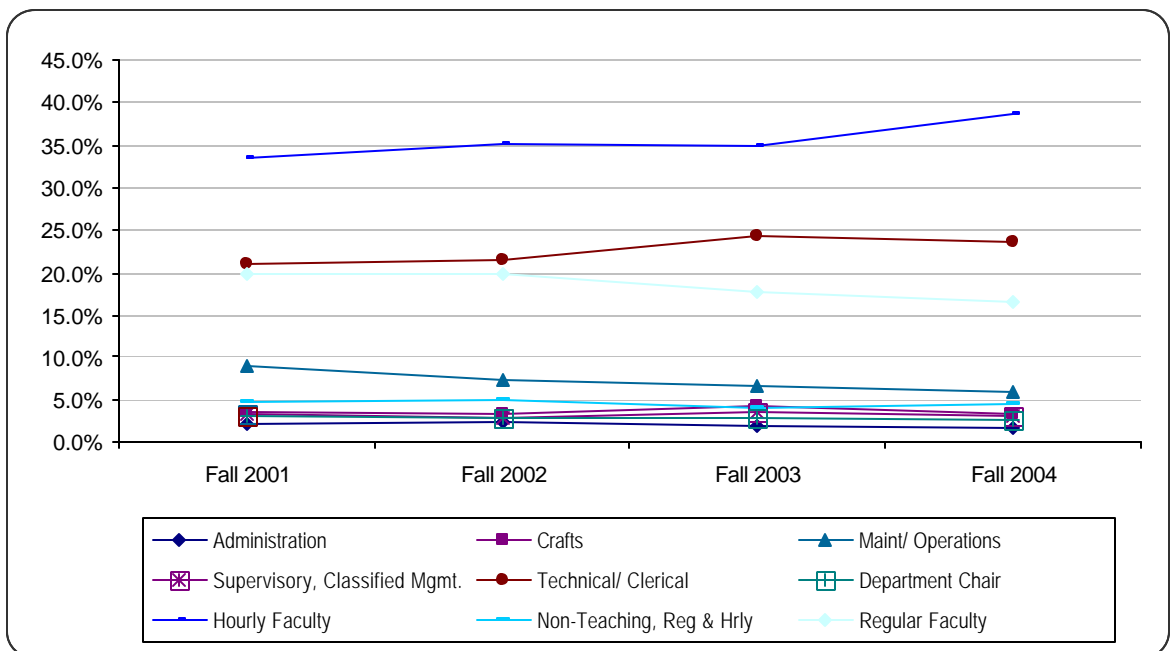
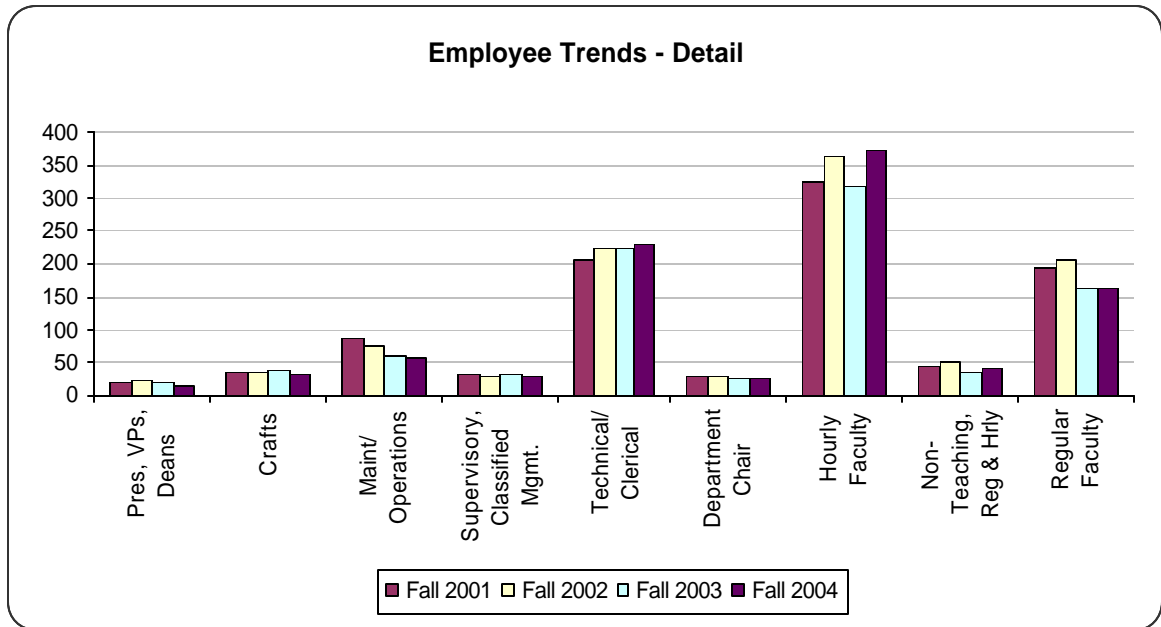
		Fall 2001		Fall 2002		Fall 2003		Fall 2004	
Administration	Pres, VPs, Deans	20	2.1%	23	2.2%	18	2.0%	16	1.7%
Classified	Crafts	34	3.5%	34	3.3%	38	4.2%	31	3.2%
	Maint/ Operations	87	9.0%	75	7.3%	60	6.6%	57	5.9%
	Police/ Safety	0	0.0%	0	0.0%	0	0.0%	0	0.0%
	Supervisory, Classified Mgmt.	31	3.2%	30	2.9%	32	3.5%	30	3.1%
	Technical/ Clerical	205	21.1%	223	21.7%	223	24.4%	227	23.6%
	<i>Classified Total</i>	<i>357</i>	<i>36.8%</i>	<i>362</i>	<i>35.2%</i>	<i>353</i>	<i>38.6%</i>	<i>345</i>	<i>35.9%</i>
Faculty	Department Chair	29	3.0%	28	2.7%	26	2.8%	25	2.6%
	Hourly Faculty	324	33.4%	361	35.1%	319	34.9%	372	38.7%
	Non-Teaching, Reg & Hrly	46	4.7%	50	4.9%	36	3.9%	42	4.4%
	Regular Faculty	194	20.0%	205	19.9%	163	17.8%	161	16.8%
	<i>Faculty Total</i>	<i>593</i>	<i>61.1%</i>	<i>644</i>	<i>62.6%</i>	<i>544</i>	<i>59.5%</i>	<i>600</i>	<i>62.4%</i>
	Total	970	100.0%	1,029	100.0%	915	100.0%	961	100.0%

Note: Employee groups are based on the bargaining unit of an employee's primary assignment. Administration includes the president, vice-presidents, and Teamster's Union members.

Source: HIS Monthly Snapshot, A0620, November 2001, November 2002, November 2003, November 2004

Employee Trends

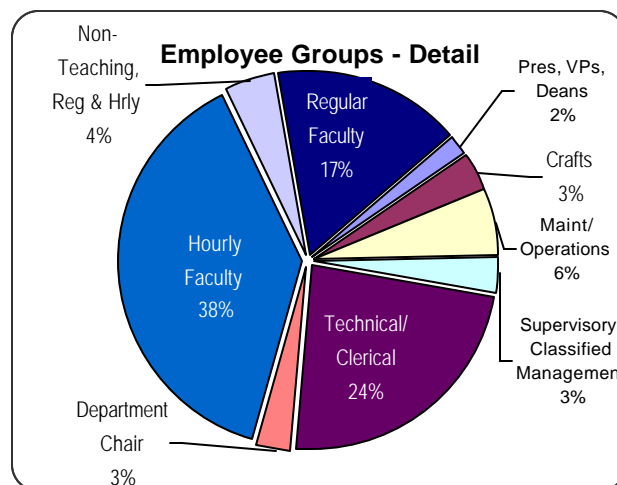
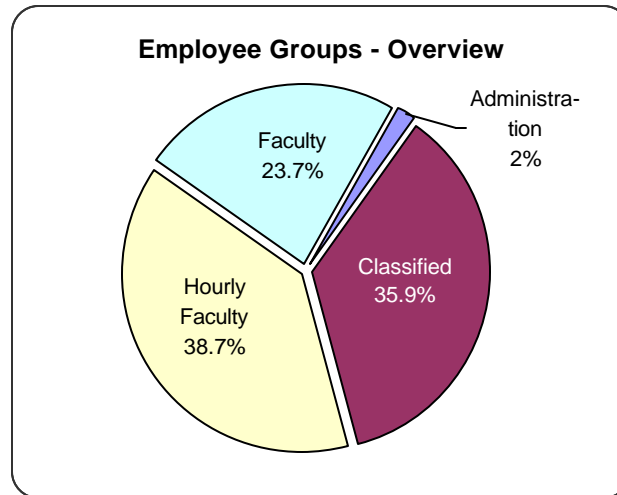
Employee Trends Fall 2001—Fall 2002—Fall 2003—Fall 2004



Note: Employee groups are based on the bargaining unit of an employee's primary assignment. Administration includes the president, vice-presidents, and Teamster's Union members.

Source: HIS Monthly Snapshot, A0620, November 2001, November 2002, November 2003, November 2004

Employee Groups Fall 2004



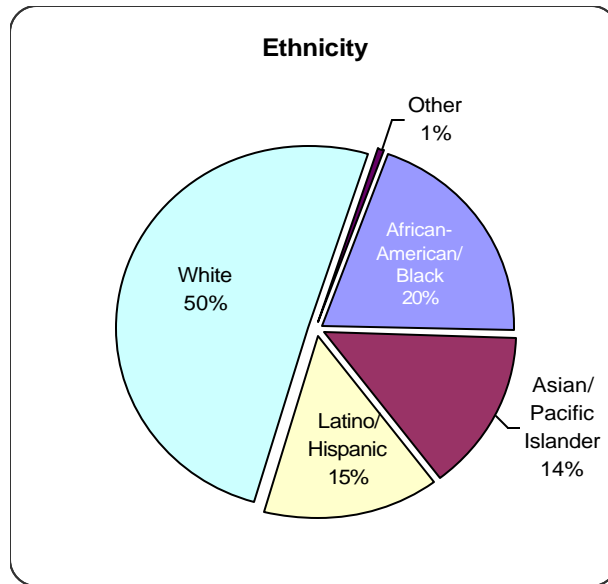
Administration	Pres, VPs, Deans	16	1.1%
Classified	Crafts	31	2.1%
	Maint/ Operations	57	3.9%
	Supervisory, Classified Management	30	2.1%
	Technical/ Clerical	227	15.7%
	<i>Classified Total</i>	345	23.8%
Faculty	Department Chair	25	1.7%
	Hourly Faculty	372	25.7%
	Non-Teaching, Reg & Hrly	42	2.9%
	Regular Faculty	161	11.1%
	<i>Faculty Total</i>	600	41.4%
	<i>Subtotal (excludes Unclassified)</i>	961	66.4%
Unclassified	Unclassified	487	33.6%
	Total	1,448	100.0%

Note: Employee groups are based on the bargaining unit of an employee's primary assignment. Administration includes the president, vice-presidents, and Teamster's Union members.

Source: HIS Monthly Snapshot, A0620, November 2004

Demographics

Employees: Ethnicity Fall 2004

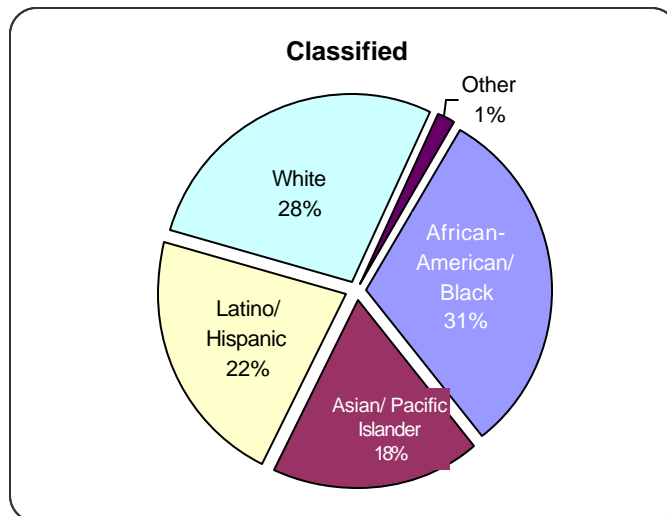
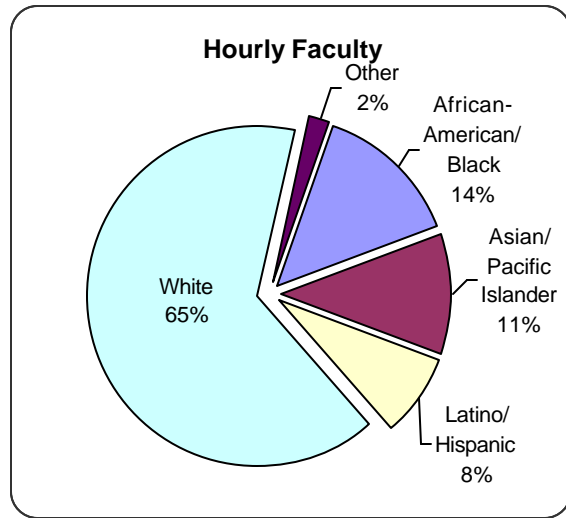
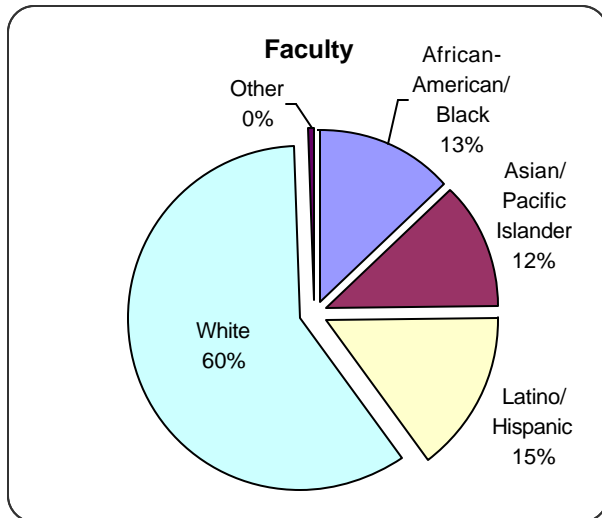
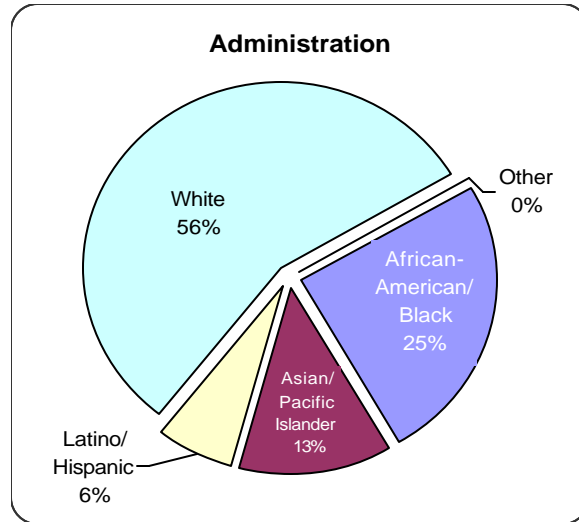


		African- American/ Black	Asian/ Pacific Islander	Latino/ Hispanic	White	Other	Total
Administration	Pres, VPs, Deans	4 25.0%	2 12.5%	1 6.3%	9 56.3%	0 0.0%	16 100.0%
Classified	Crafts	2 6.5%	5 16.1%	6 19.4%	17 54.8%	1 3.2%	31 100.0%
	Maint/ Operations	33 57.9%	1 1.8%	16 28.1%	7 12.3%	0 0.0%	57 100.0%
	Supervisory, Classified Management	12 40.0%	4 13.3%	8 26.7%	6 20.0%	0 0.0%	30 100.0%
	Technical/ Clerical	59 26.0%	53 23.3%	46 20.3%	65 28.6%	4 1.8%	227 100.0%
	<i>Classified Subtotal</i>	<i>106 30.7%</i>	<i>63 18.3%</i>	<i>76 22.0%</i>	<i>95 27.5%</i>	<i>5 1.4%</i>	<i>345 100.0%</i>
Faculty	Department Chair	3 12.0%	3 12.0%	2 8.0%	17 68.0%		25 100.0%
	Hourly Faculty	52 14.0%	42 11.3%	29 7.8%	242 65.1%	7 1.9%	372 100.0%
	Non-Teaching, Reg & Hrly	8 19.0%	6 14.3%	10 23.8%	18 42.9%		42 100.0%
	Regular Faculty	19 11.8%	18 11.2%	22 13.7%	101 62.7%	1 0.6%	161 100.0%
	<i>Faculty Subtotal</i>	<i>82 13.7%</i>	<i>69 11.5%</i>	<i>63 10.5%</i>	<i>378 63.0%</i>	<i>7 1.3%</i>	<i>600 100.0%</i>
	Total	192 20.0%	134 13.9%	140 14.6%	482 50.2%	6 0.6%	961 99.3%

Note: Unclassified employees are excluded from the total.

Source: HIS Monthly Snapshot, A0620, November 2004

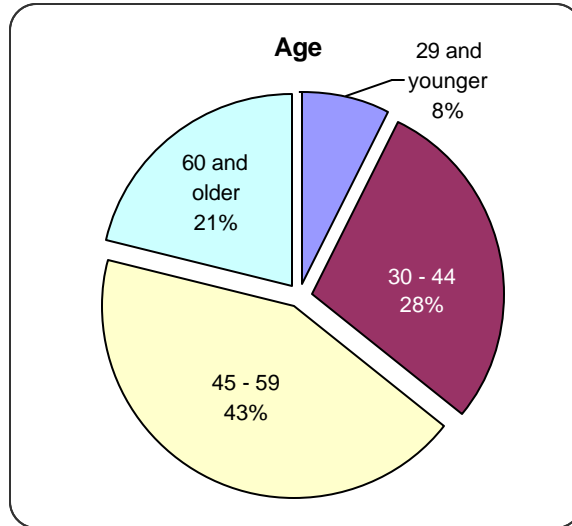
Ethnicity by Employee Group Fall 2004



Source: HIS Monthly Snapshot, A0620, November 2004

Demographics

Employee: Age Fall 2004

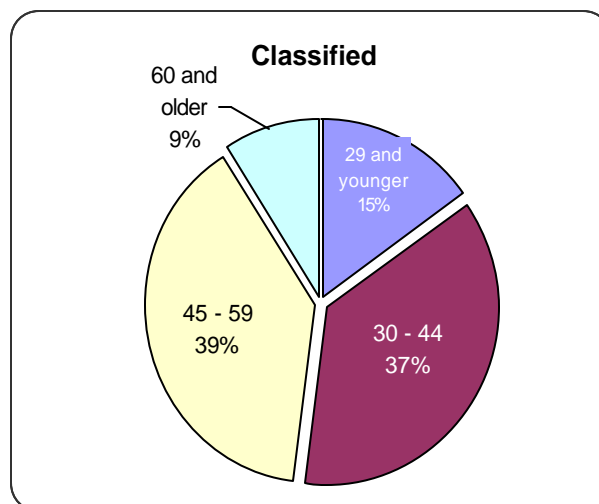
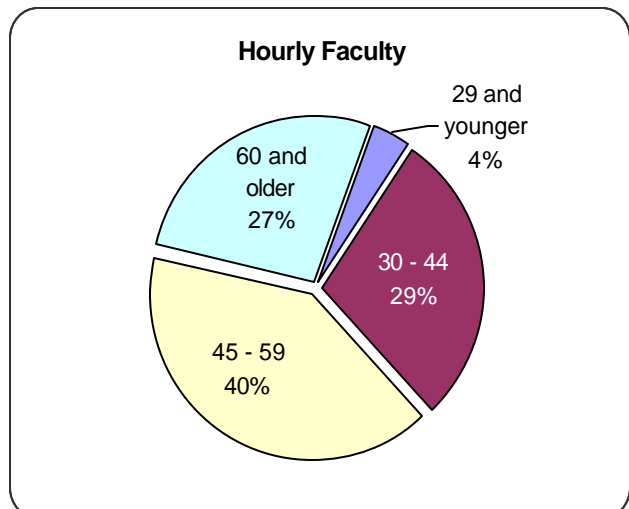
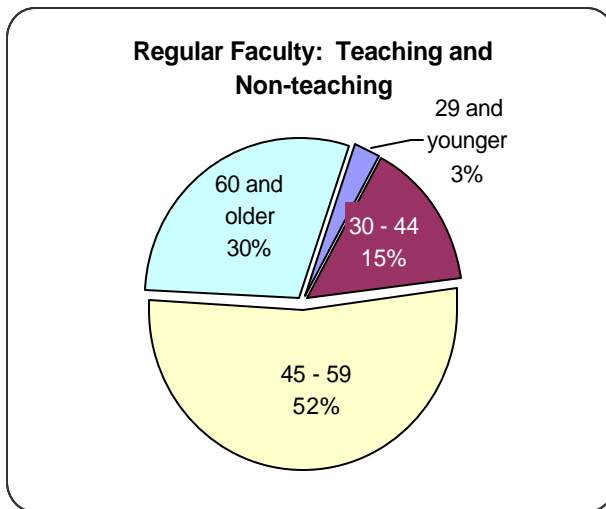
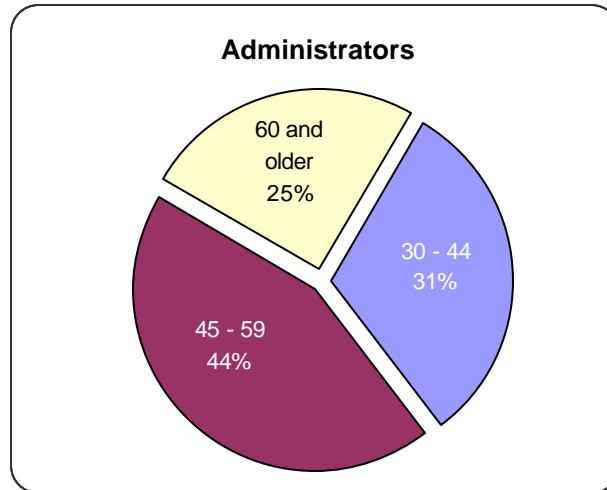


		29 and younger	30 - 44	45 - 59	60 and older	Total
Administration	Pres, VPs, Deans	0 0.0%	5 31.3%	7 43.8%	4 25.0%	16 100.0%
Classified	Crafts	1 3.2%	7 22.6%	19 61.3%	4 12.9%	31 100.0%
	Maint/ Operations	4 7.0%	18 31.6%	30 52.6%	5 8.8%	57 100.0%
	Supervisory, Classified Management	0 0.0%	11 36.7%	14 46.7%	5 16.7%	30 100.0%
	Technical/ Clerical	48 21.1%	90 39.6%	71 31.3%	18 7.9%	227 100.0%
<i>Classified Subtotal</i>		<i>53 15.4%</i>	<i>126 36.5%</i>	<i>134 38.8%</i>	<i>32 9.3%</i>	<i>345 100.0%</i>
Faculty	Department Chair	0 0.0%	3 12.0%	11 44.0%	11 44.0%	25 100.0%
	Hourly Faculty	14 3.8%	107 28.8%	151 40.6%	100 26.9%	372 100.0%
	Non-Teaching, Reg & Hrly	4 9.5%	3 7.1%	27 64.3%	8 19.0%	42 100.0%
	Regular Faculty	2 1.2%	28 17.4%	82 50.9%	49 30.4%	161 100.0%
<i>Faculty Subtotal</i>		<i>20 3.3%</i>	<i>141 23.5%</i>	<i>271 45.2%</i>	<i>168 28.0%</i>	<i>600 100.0%</i>
Total		73 7.6%	272 28.3%	412 42.9%	204 21.2%	961 100.0%

Note: Unclassified employees are excluded from the total.

Source: HIS Monthly Snapshot, A0620, November 2004

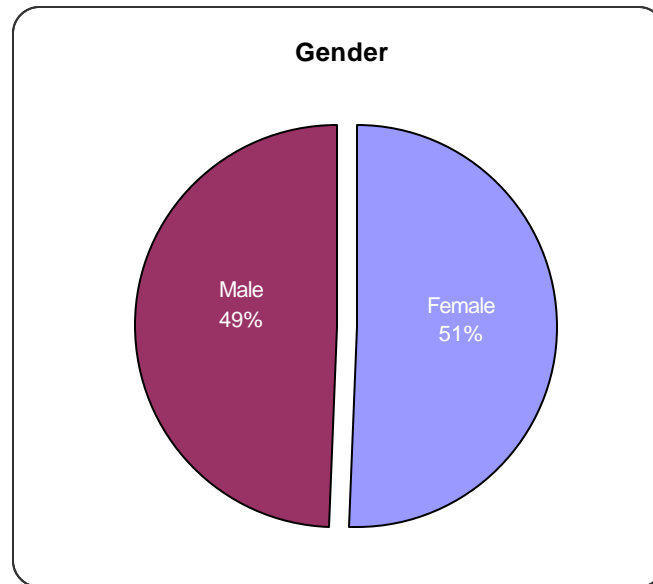
**Age by Employee Group
Fall 2004**



Source: HIS Monthly Snapshot, A0620, November 2004

Demographics

Employee: Gender Fall 2004

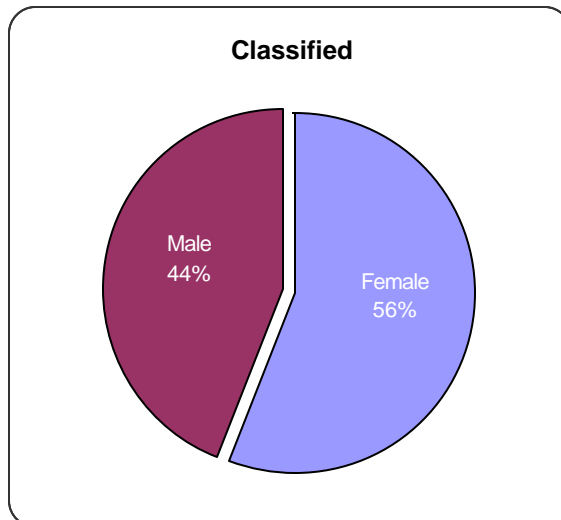
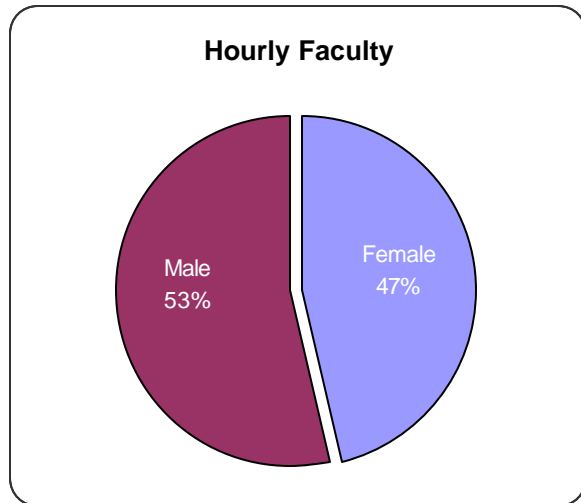
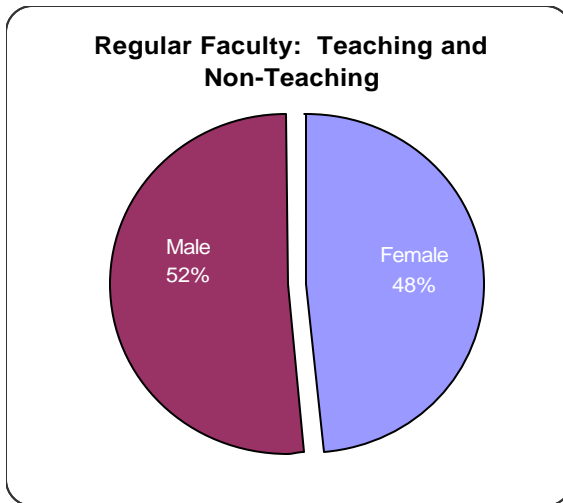
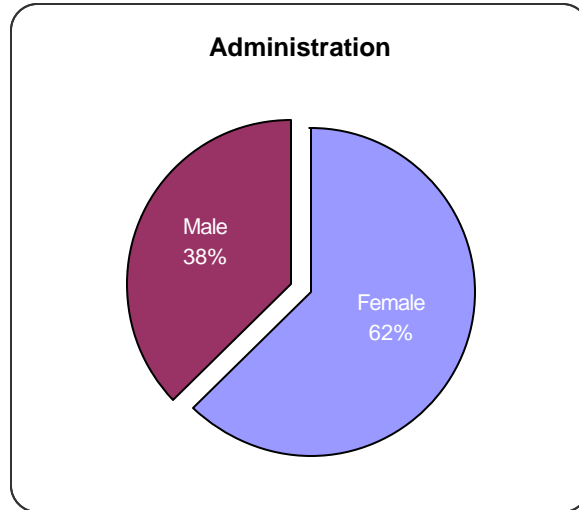


	Female		Male		Total	
Pres, VPs, Deans	10	62.5%	6	37.5%	16	100.0%
Crafts	3	9.7%	28	90.3%	31	100.0%
Maint/ Operations	15	26.3%	42	73.7%	57	100.0%
Supervisory, Classified Management	21	70.0%	9	30.0%	30	100.0%
Technical/ Clerical	154	67.8%	73	32.2%	227	100.0%
<i>Classified Total</i>	<i>193</i>	<i>55.9%</i>	<i>152</i>	<i>44.1%</i>	<i>345</i>	<i>100.0%</i>
Department Chair	11	44.0%	14	56.0%	25	100.0%
Hourly Faculty	173	46.5%	199	53.5%	372	100.0%
Non-Teaching, Reg & Hrly	27	64.3%	15	35.7%	42	100.0%
Regular Faculty	72	44.7%	89	55.3%	161	100.0%
<i>Faculty Total</i>	<i>283</i>	<i>47.2%</i>	<i>317</i>	<i>52.8%</i>	<i>600</i>	<i>100.0%</i>
Total	486	50.6%	475	49.4%	961	100.0%

Note: Unclassified employees are excluded from the total.

Source: HIS Monthly Snapshot, A0620, November 2004

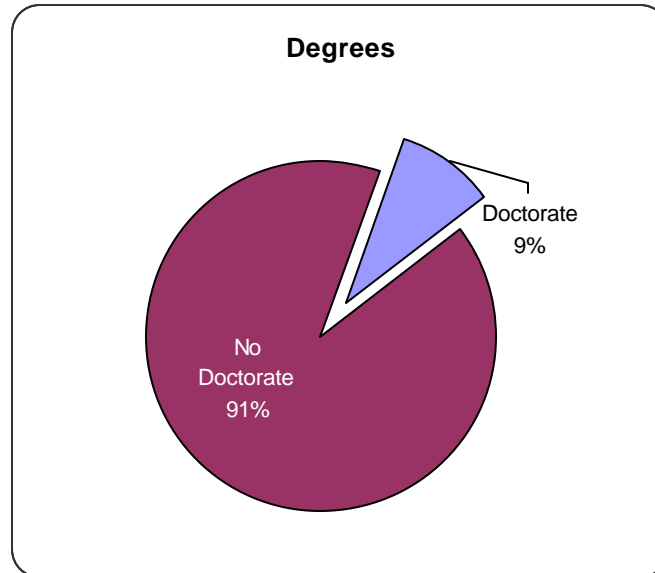
**Gender by Employee Group
Fall 2004**



Source: HIS Monthly Snapshot, A0620, November 2004

Demographics

Employee: Degrees Fall 2004

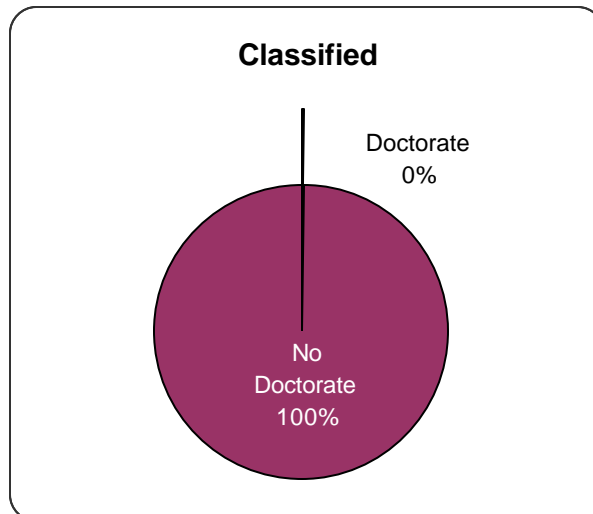
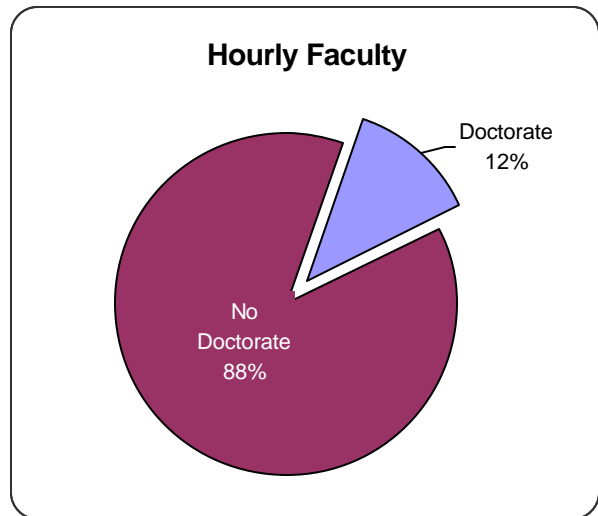
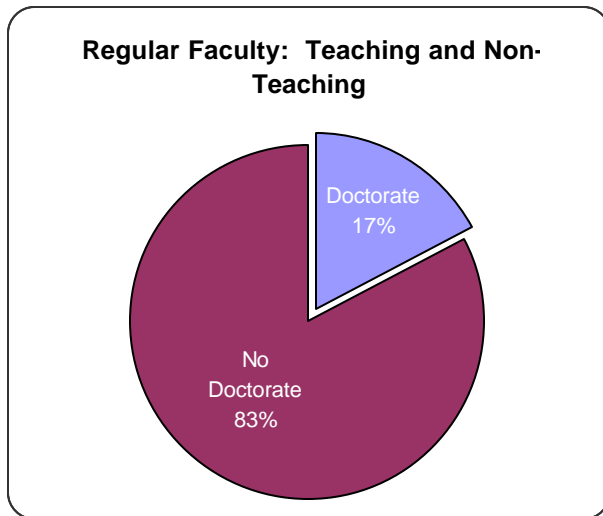
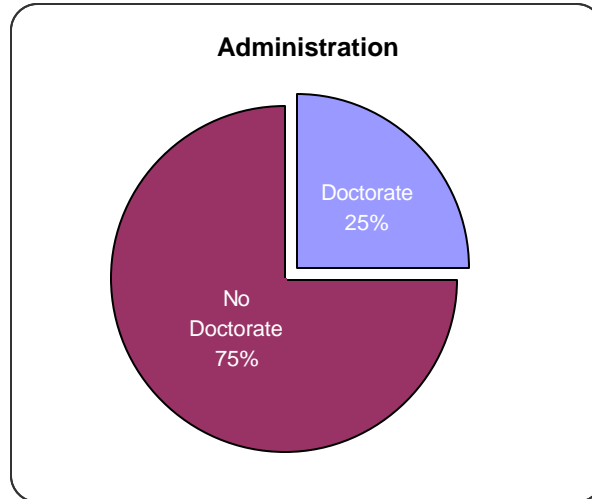


		Doctorate		No Doctorate		Total	
Administration	Pres, VPs, Deans	4	25.0%	12	75.0%	16	100.0%
Classified	Crafts	0	0.0%	31	100.0%	31	100.0%
	Maint/ Operations	0	0.0%	57	100.0%	57	100.0%
	Supervisory, Classified Management	0	0.0%	30	100.0%	30	100.0%
	Technical/ Clerical	1	0.4%	226	99.6%	227	100.0%
<i>Classified Total</i>		<i>1</i>	<i>0.3%</i>	<i>344</i>	<i>99.7%</i>	<i>345</i>	<i>100.0%</i>
Faculty	Department Chair	6	24.0%	19	76.0%	25	100.0%
	Hourly Faculty	45	12.1%	327	87.9%	372	100.0%
	Non-Teaching, Reg & Hrly	2	4.8%	40	95.2%	42	100.0%
	Regular Faculty	31	19.3%	130	80.7%	161	100.0%
<i>Faculty Total</i>		<i>84</i>	<i>14.0%</i>	<i>516</i>	<i>86.0%</i>	<i>600</i>	<i>100.0%</i>
Total		89	9.3%	872	90.7%	961	100.0%

Note: Unclassified employees are excluded from the total.

Source: HIS Monthly Snapshot, A0620, November 2004

**Degrees by Employee Group
Fall 2004**



Source: HIS Monthly Snapshot, A0620, November 2004

