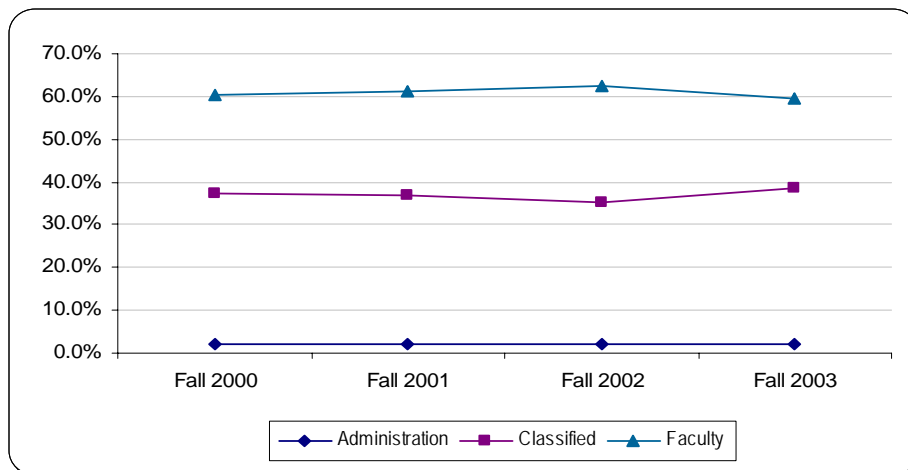
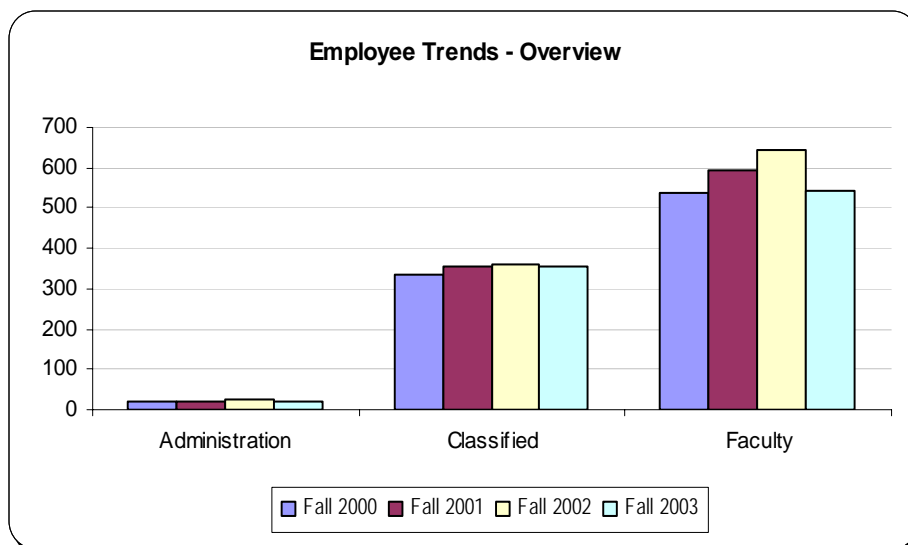


SECTION 6



EMPLOYEES

Employee Trends Fall 2000—Fall 2001—Fall 2002—Fall 2003 Overview

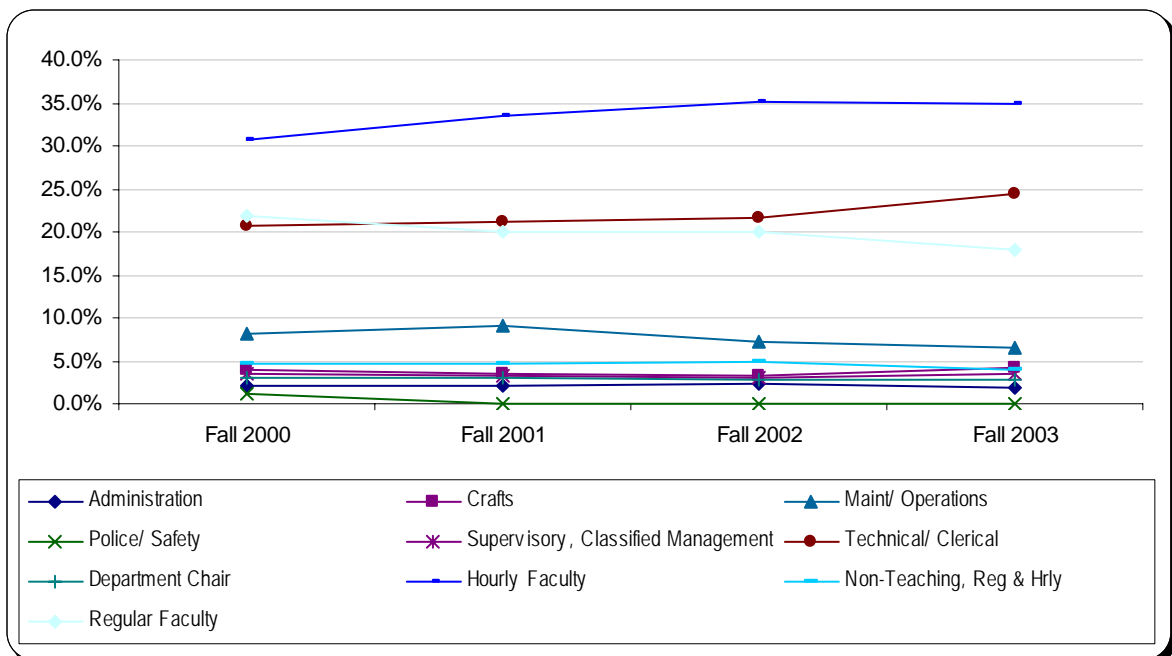
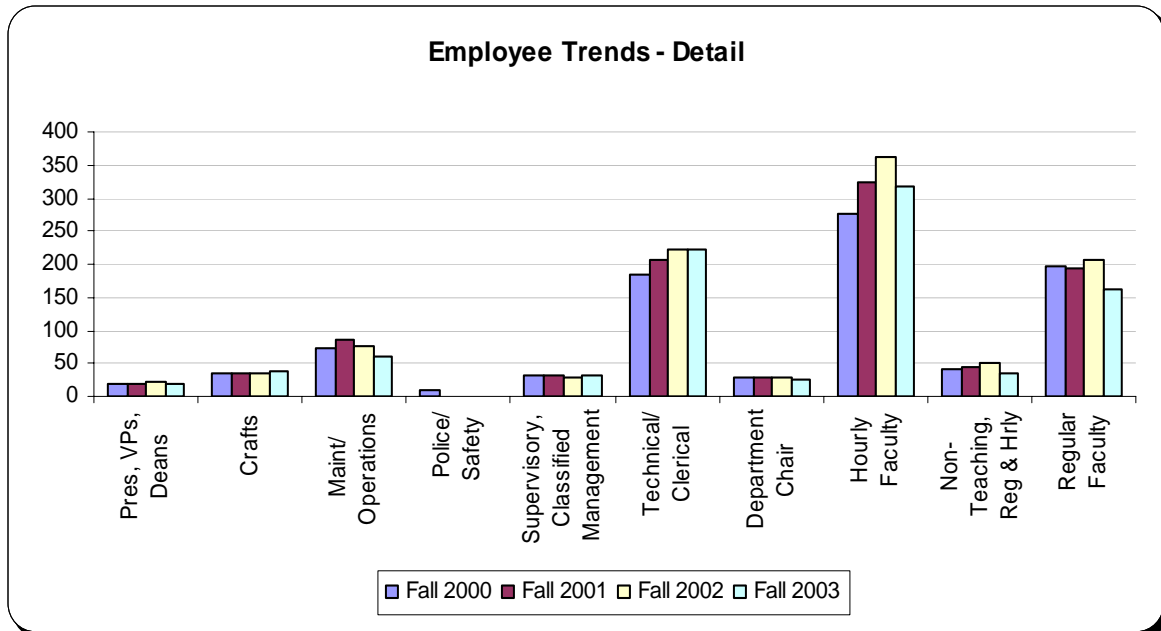


		Fall 2000		Fall 2001		Fall 2002		Fall 2003	
Administration	Pres, VPs, Deans	18	2.0%	20	2.1%	23	2.2%	18	2.0%
Classified	Crafts	35	3.9%	34	3.5%	34	3.3%	38	4.2%
	Maint/ Operations	73	8.2%	87	9.0%	75	7.3%	60	6.6%
	Police/ Safety	11	1.2%	0	0.0%	0	0.0%	0	0.0%
	Supervisory, Classified Management	31	3.5%	31	3.2%	30	2.9%	32	3.5%
	Technical/ Clerical	185	20.7%	205	21.1%	223	21.7%	223	24.4%
<i>Classified Total</i>		335	37.5%	357	36.8%	362	35.2%	353	38.6%
Faculty	Department Chair	28	3.1%	29	3.0%	28	2.7%	26	2.8%
	Hourly Faculty	275	30.8%	324	33.4%	361	35.1%	319	34.9%
	Non-Teaching, Reg & Hrly	41	4.6%	46	4.7%	50	4.9%	36	3.9%
	Regular Faculty	196	21.9%	194	20.0%	205	19.9%	163	17.8%
<i>Faculty Total</i>		540	60.5%	593	61.1%	644	62.6%	544	59.5%
Total		893	100.0%	970	100.0%	1,029	100.0%	915	100.0%

Note: Employee groups are based on the bargaining unit of an employee's primary assignment. Administration includes the president, vice-presidents, and Teamster's Union members.

Source: HIS Monthly Snapshot, A0620, November 2000, November 2001, November 2002, November 2003

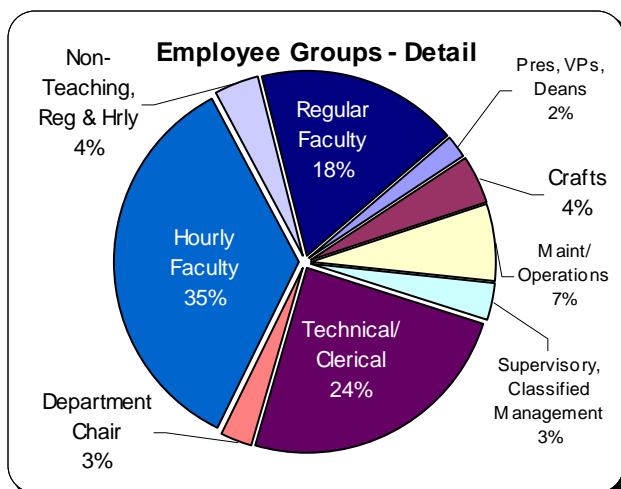
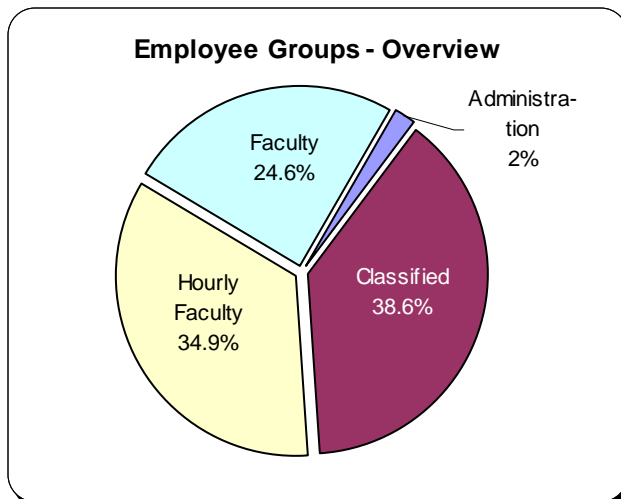
Employee Trends Fall 2000—Fall 2001—Fall 2002—Fall 2003



Note: Employee groups are based on the bargaining unit of an employee's primary assignment. Administration includes the president, vice-presidents, and Teamster's Union members.

Source: HIS Monthly Snapshot, A0620, November 2000, November 2001, November 2002, November 2003

**Employee Groups
Fall 2003**

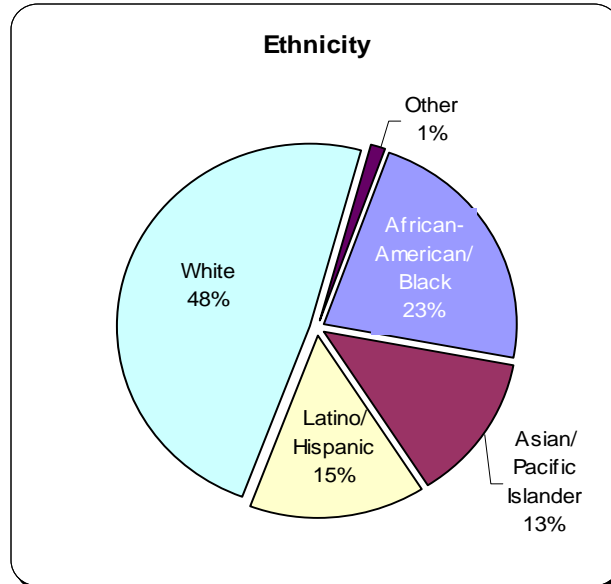


Administration	Pres, VPs, Deans	18	1.3%
Classified	Crafts	38	2.7%
	Maint/ Operations	60	4.3%
	Supervisory, Classified Management	32	2.3%
	Technical/ Clerical	223	15.9%
<i>Classified Total</i>		<i>353</i>	<i>25.2%</i>
Faculty	Department Chair	26	1.9%
	Hourly Faculty	319	22.8%
	Non-Teaching, Reg & Hrly	36	2.6%
	Regular Faculty	163	11.7%
<i>Faculty Total</i>		<i>544</i>	<i>38.9%</i>
<i>Subtotal (excludes Unclassified)</i>		<i>915</i>	<i>65.4%</i>
Unclassified	Unclassified	484	34.6%
<i>Total</i>		<i>1,399</i>	<i>100.0%</i>

Note: Employee groups are based on the bargaining unit of an employee's primary assignment. Administration includes the president, vice-presidents, and Teamster's Union members.

Source: HIS Monthly Snapshot, A0620, November 2003

Employees: Ethnicity Fall 2003

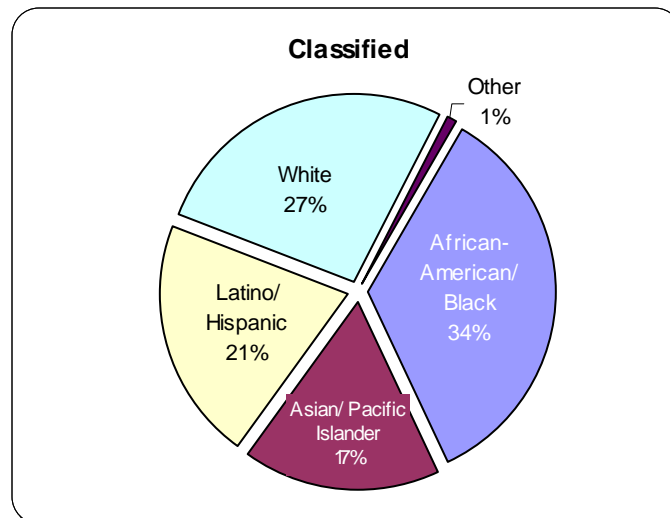
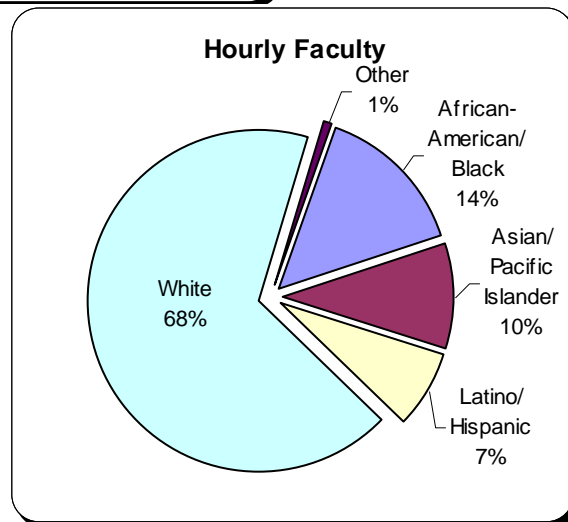
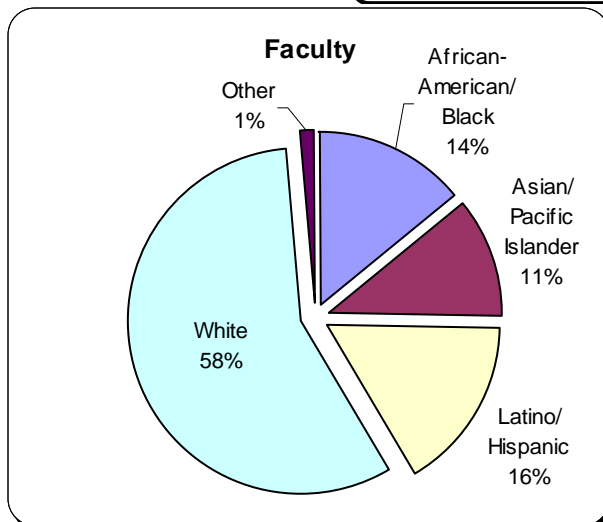
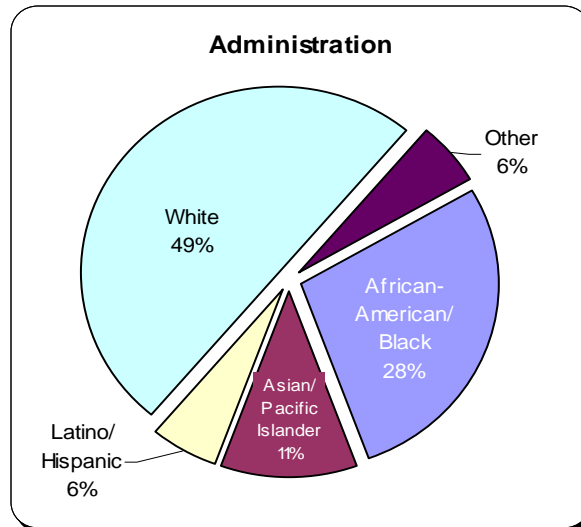


		African-American/ Black	Asian/ Pacific Islander	Latino/ Hispanic	White	Other	Total
Administration	Pres, VPs, Deans	5 27.8%	2 11.1%	1 5.6%	9 50.0%	1 5.6%	18 100.0%
Classified	Crafts	3 7.9%	5 13.2%	9 23.7%	20 52.6%	1 2.6%	38 100.0%
	Maint/ Operations	35 58.3%	1 1.7%	17 28.3%	7 11.7%	0 0.0%	60 100.0%
	Supervisory, Classified Management	15 46.9%	3 9.4%	8 25.0%	6 18.8%	0 0.0%	32 100.0%
	Technical/ Clerical	70 31.4%	50 22.4%	40 17.9%	61 27.4%	2 0.9%	223 100.0%
	<i>Classified Subtotal</i>	<i>123 34.8%</i>	<i>59 16.7%</i>	<i>74 21.0%</i>	<i>94 26.6%</i>	<i>3 0.8%</i>	<i>353 100.0%</i>
Faculty	Department Chair	4 15.4%	3 11.5%	2 7.7%	17 65.4%	0 0.0%	26 100.0%
	Hourly Faculty	46 14.4%	32 10.0%	23 7.2%	215 67.4%	3 0.9%	319 100.0%
	Non-Teaching, Reg & Hrly	7 19.4%	5 13.9%	10 27.8%	14 38.9%	0 0.0%	36 100.0%
	Regular Faculty	21 12.9%	17 10.4%	24 14.7%	98 60.1%	3 1.8%	163 100.0%
	<i>Faculty Subtotal</i>	<i>78 14.3%</i>	<i>57 10.5%</i>	<i>59 10.8%</i>	<i>344 63.2%</i>	<i>6 1.1%</i>	<i>544 100.0%</i>
	<i>Total</i>	<i>206 22.5%</i>	<i>118 12.9%</i>	<i>134 14.6%</i>	<i>447 48.9%</i>	<i>10 1.1%</i>	<i>915 100.0%</i>

Note: Unclassified employees are excluded from the total.

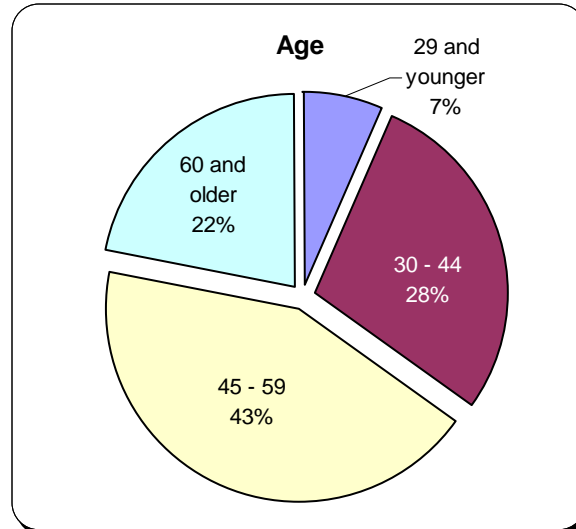
Source: HIS Monthly Snapshot, A0620, November 2003

**Ethnicity by Employee Group
Fall 2003**



Source: HIS Monthly Snapshot, A0620, November 2003

Employee: Age Fall 2003

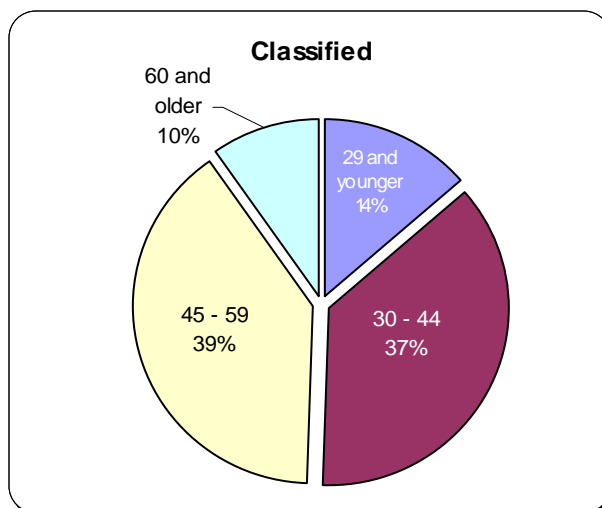
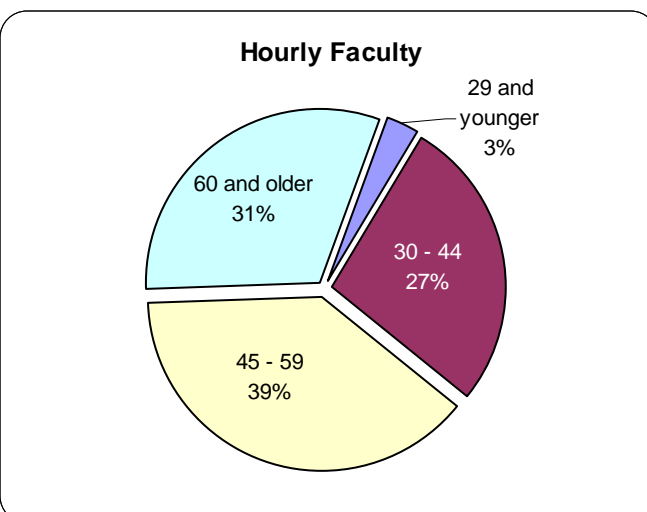
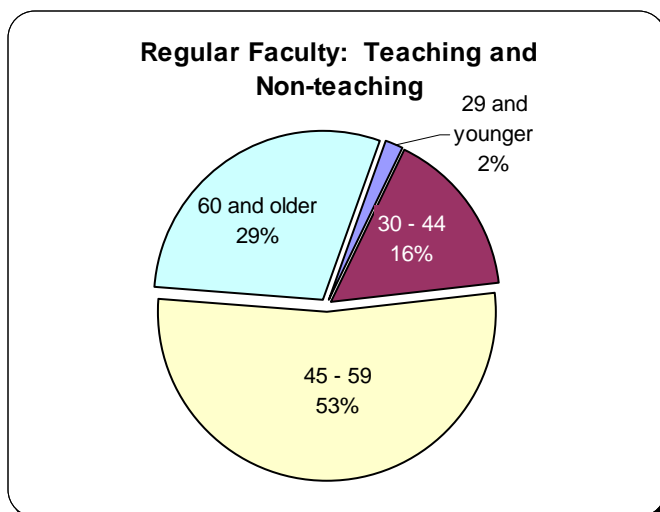
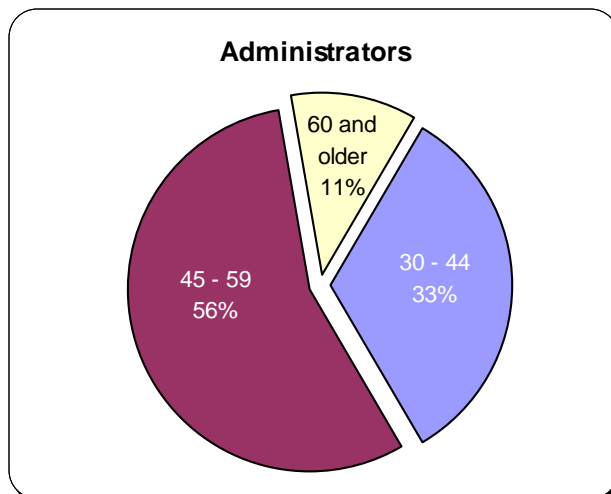


		29 and younger	30 - 44	45 - 59	60 and older	Total
Administration	Pres, VPs, Deans	0 0.0%	6 33.3%	10 55.6%	2 11.1%	18 100.0%
Classified	Crafts	3 7.9%	6 15.8%	27 71.1%	2 5.3%	38 100.0%
	Main/ Operations	4 6.7%	20 33.3%	29 48.3%	7 11.7%	60 100.0%
	Supervisory, Classified Management	1 3.1%	13 40.6%	14 43.8%	4 12.5%	32 100.0%
	Technical/ Clerical	40 17.9%	91 40.8%	71 31.8%	21 9.4%	223 100.0%
<i>Classified Subtotal</i>		<i>48 13.6%</i>	<i>130 36.8%</i>	<i>141 39.9%</i>	<i>34 9.6%</i>	<i>353 100.0%</i>
Faculty	Department Chair	0 0.0%	2 7.7%	15 57.7%	9 34.6%	26 100.0%
	Hourly Faculty	10 3.2%	86 27.1%	122 38.5%	99 31.2%	317 100.0%
	Non-Teaching, Reg & Hrly	2 5.6%	4 11.1%	24 66.7%	6 16.7%	36 100.0%
	Regular Faculty	2 1.2%	30 18.4%	80 49.1%	51 31.3%	163 100.0%
<i>Faculty Subtotal</i>		<i>14 2.6%</i>	<i>122 22.5%</i>	<i>241 44.5%</i>	<i>165 30.4%</i>	<i>542 100.0%</i>
Total		62 6.8%	258 28.3%	392 42.9%	201 22.0%	913 100.0%

Note: Unclassified employees are excluded from the total.

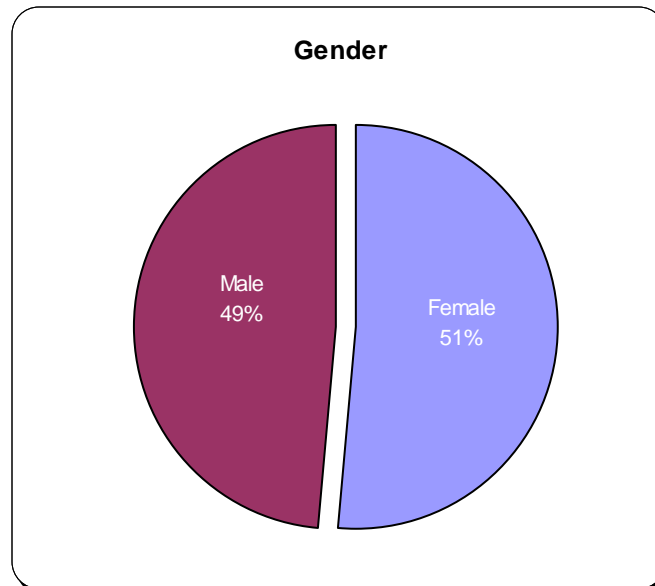
Source: HIS Monthly Snapshot, A0620, November 2003

**Age by Employee Group
Fall 2003**



Source: HIS Monthly Snapshot, A0620, November 2003

Employee: Gender Fall 2003

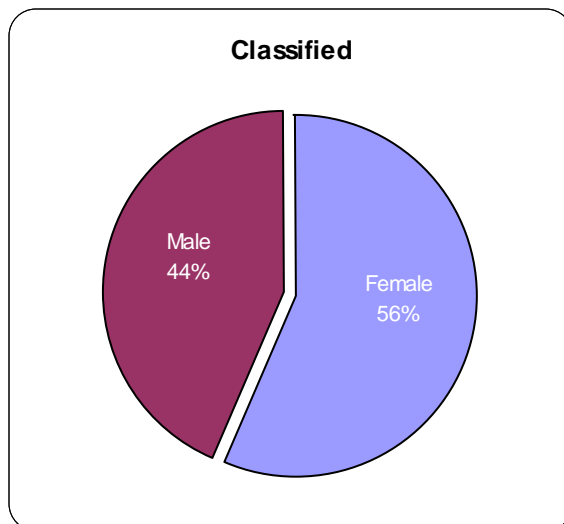
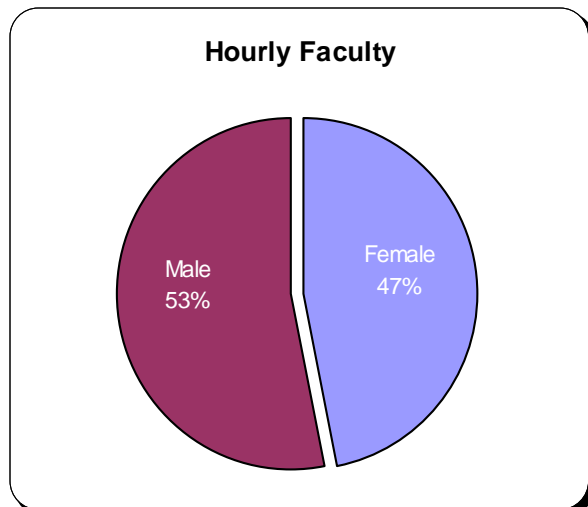
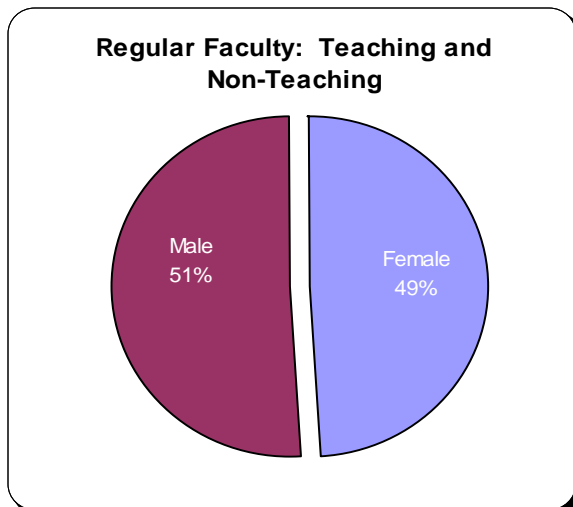
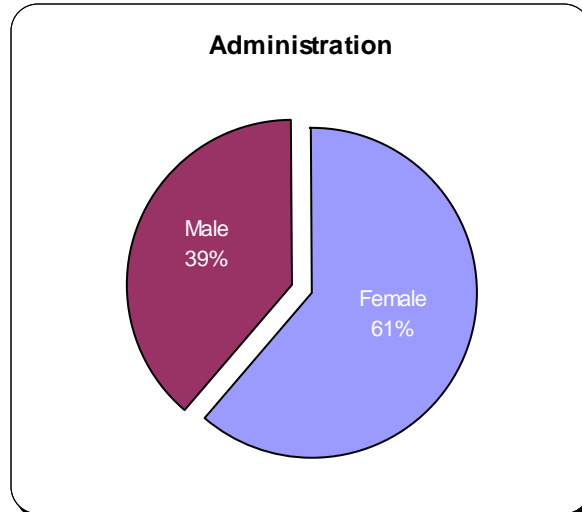


	Female		Male		Total	
Pres, VPs, Deans	11	61.1%	7	38.9%	18	100.0%
Crafts	3	7.9%	35	92.1%	38	100.0%
Maint/ Operations	22	36.7%	38	63.3%	60	100.0%
Supervisory, Classified Management	20	62.5%	12	37.5%	32	100.0%
Technical/ Clerical	154	69.1%	69	30.9%	223	100.0%
<i>Classified Total</i>	<i>199</i>	<i>56.4%</i>	<i>154</i>	<i>43.6%</i>	<i>353</i>	<i>100.0%</i>
Department Chair	15	57.7%	11	42.3%	26	100.0%
Hourly Faculty	150	47.0%	169	53.0%	319	100.0%
Non-Teaching, Reg & Hrly	22	61.1%	14	38.9%	36	100.0%
Regular Faculty	73	44.8%	90	55.2%	163	100.0%
<i>Faculty Total</i>	<i>260</i>	<i>47.8%</i>	<i>284</i>	<i>52.2%</i>	<i>544</i>	<i>100.0%</i>
<i>Total</i>	<i>470</i>	<i>51.4%</i>	<i>445</i>	<i>48.6%</i>	<i>915</i>	<i>100.0%</i>

Note: Unclassified employees are excluded from the total.

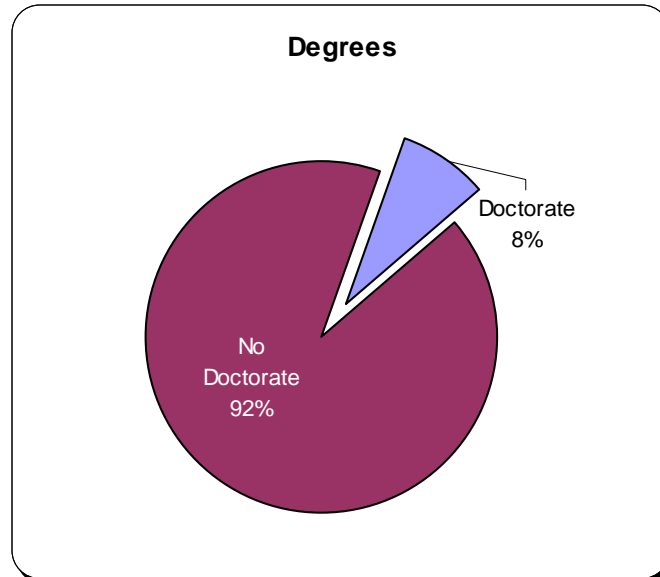
Source: HIS Monthly Snapshot, A0620, November 2003

**Gender by Employee Group
Fall 2003**



Source: HIS Monthly Snapshot, A0620, November 2003

Employee: Degrees Fall 2003

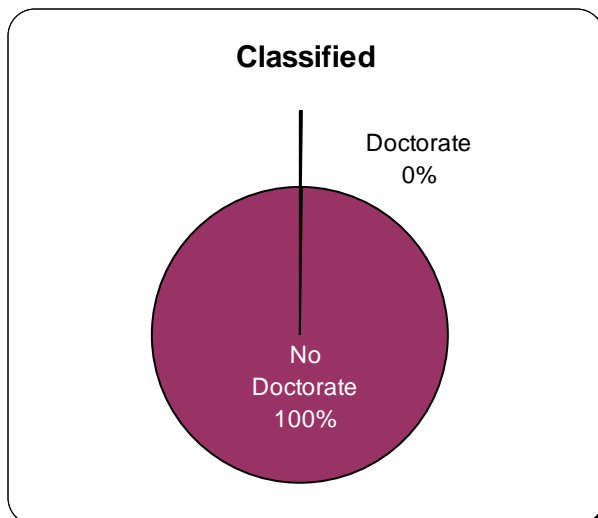
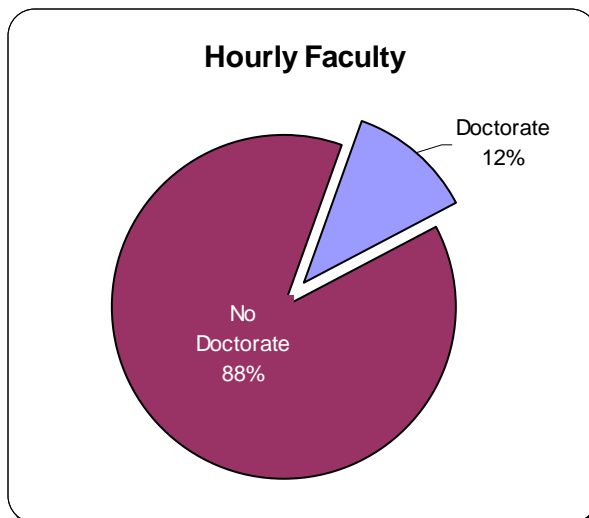
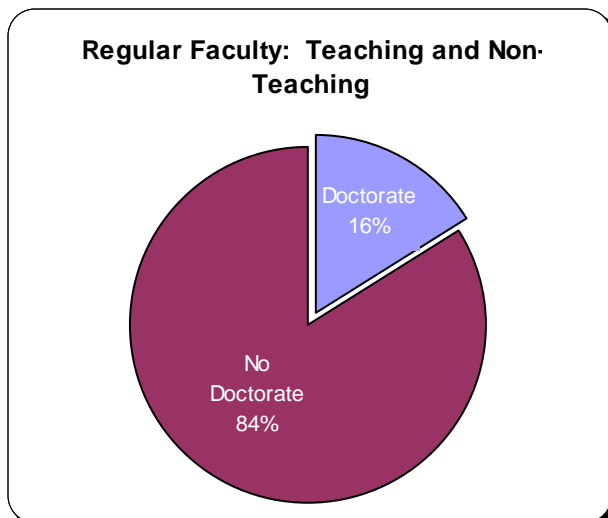
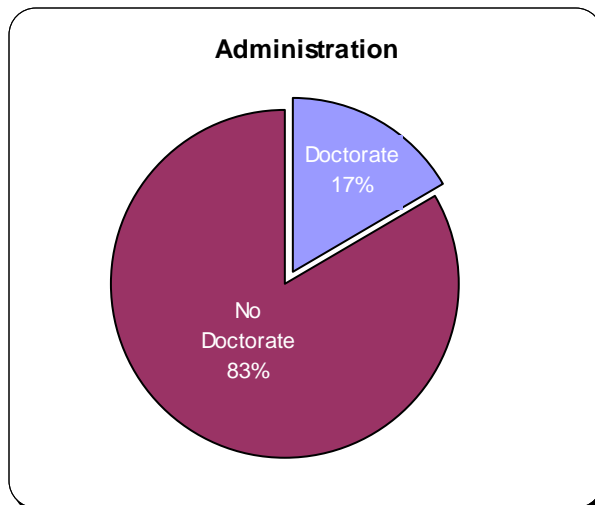


		Doctorate		No Doctorate		Total	
Administration	Pres, VPs, Deans	3	16.7%	15	83.3%	18	100.0%
Classified	Crafts	0	0.0%	38	100.0%	38	100.0%
	Main/ Operations	0	0.0%	60	100.0%	60	100.0%
	Supervisory, Classified Management	0	0.0%	32	100.0%	32	100.0%
	Technical/ Clerical	1	0.4%	222	99.6%	223	100.0%
<i>Classified Total</i>		<i>1</i>	<i>0.3%</i>	<i>352</i>	<i>99.7%</i>	<i>353</i>	<i>100.0%</i>
Faculty	Department Chair	5	19.2%	21	80.8%	26	100.0%
	Hourly Faculty	37	11.6%	282	88.4%	319	100.0%
	Non-Teaching, Reg & Hrly	1	2.8%	35	97.2%	36	100.0%
	Regular Faculty	30	18.4%	133	81.6%	163	100.0%
<i>Faculty Total</i>		<i>73</i>	<i>13.4%</i>	<i>471</i>	<i>86.6%</i>	<i>544</i>	<i>100.0%</i>
Total		77	8.4%	838	91.6%	915	100.0%

Note: Unclassified employees are excluded from the total.

Source: HIS Monthly Snapshot, A0620, November 2003

Degrees by Employee Group
Fall 2003



Source: HIS Monthly Snapshot, A0620, November 2003

