

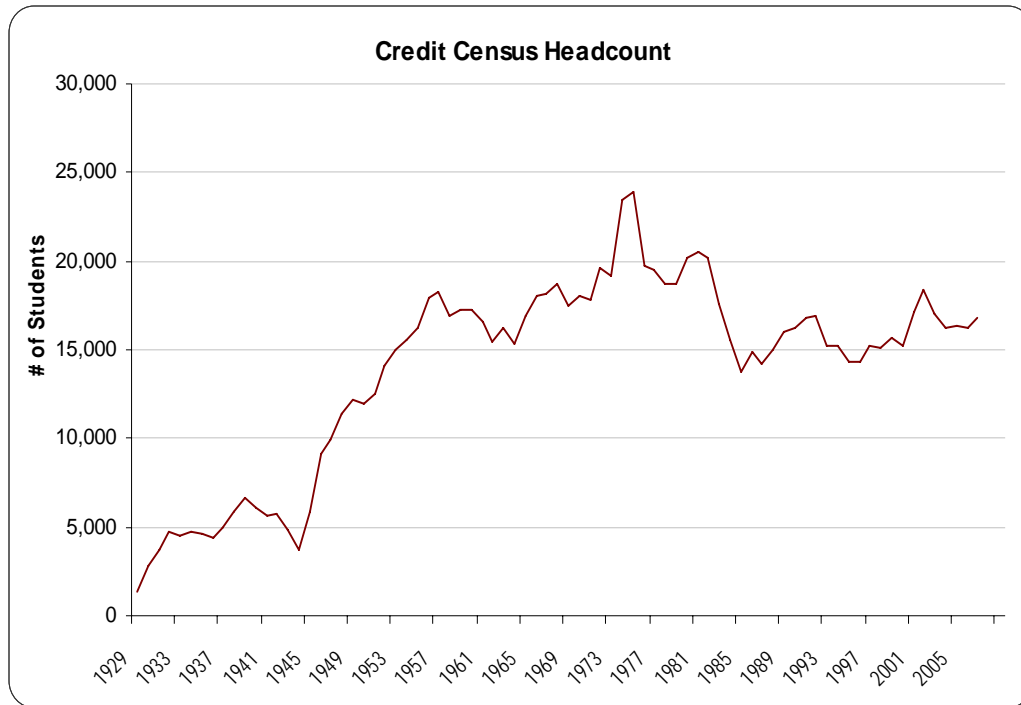
# SECTION 1



# STUDENT INFORMATION



## Credit Census Headcount Fall 1929 - Fall 2007



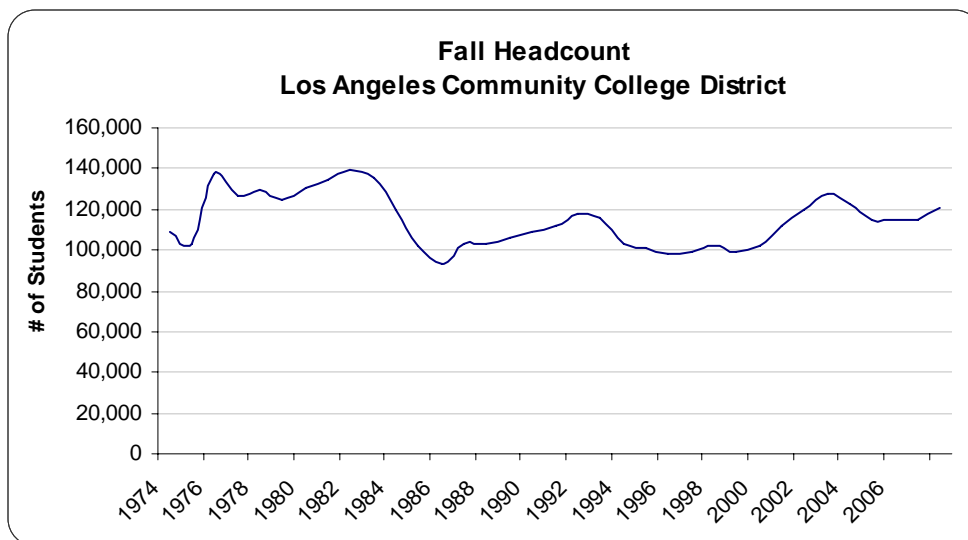
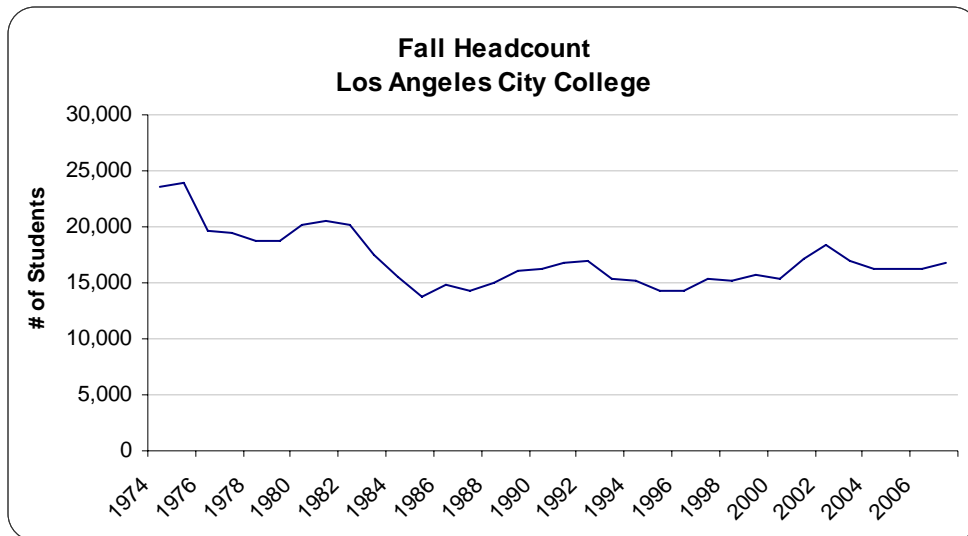
Fall	# of Students	% Chg	Fall	# of Students	% Chg	Fall	# of Students	% Chg
1929	1,377		1956	17,980	10.7%	1983	17,568	-12.9%
1930	2,826	105.2%	1957	18,256	1.5%	1984	15,558	-11.4%
1931	3,712	31.4%	1958	16,929	-7.3%	1985	13,743	-11.7%
1932	4,755	28.1%	1959	17,231	1.8%	1986	14,858	8.1%
1933	4,497	-5.4%	1960	17,278	0.3%	1987	14,224	-4.3%
1934	4,763	5.9%	1961	16,528	-4.3%	1988	14,973	5.3%
1935	4,645	-2.5%	1962	15,484	-6.3%	1989	16,036	7.1%
1936	4,426	-4.7%	1963	16,241	4.9%	1990	16,236	1.2%
1937	5,008	13.1%	1964	15,306	-5.8%	1991	16,810	3.5%
1938	5,874	17.3%	1965	16,922	10.6%	1992	16,877	0.4%
1939	6,603	12.4%	1966	18,023	6.5%	1993	15,270	-9.5%
1940	6,049	-8.4%	1967	18,137	0.6%	1994	15,217	-0.3%
1941	5,627	-7.0%	1968	18,745	3.4%	1995	14,346	-5.7%
1942	5,733	1.9%	1969	17,463	-6.8%	1996	14,354	0.1%
1943	4,794	-16.4%	1970	18,069	3.5%	1997	15,275	6.4%
1944	3,721	-22.4%	1971	17,802	-1.5%	1998	15,141	-0.9%
1945	5,885	58.2%	1972	19,622	10.2%	1999	15,685	3.6%
1946	9,133	55.2%	1973	19,185	-2.2%	2000	15,271	-2.6%
1947	9,900	8.4%	1974	23,514	22.6%	2001	17,095	11.9%
1948	11,440	15.6%	1975	23,904	1.7%	2002	18,372	7.5%
1949	12,150	6.2%	1976	19,727	-17.5%	2003	16,984	-7.6%
1950	11,943	-1.7%	1977	19,535	-1.0%	2004	16,268	-4.2%
1951	12,568	5.2%	1978	18,776	-3.9%	2005	16,306	0.2%
1952	14,048	11.8%	1979	18,701	-0.4%	2006	16,190	-0.7%
1953	15,016	6.9%	1980	20,174	7.9%	2007	16,757	3.5%
1954	15,591	3.8%	1981	20,492	1.6%			

**Note:** Headcount is the number of individual students (unduplicated).

**Source:** The Los Angeles Community College District Office of Institutional Research and Information, <http://research.laccd.edu/research/>

# Enrollment Trends

## Credit Census Headcount Los Angeles City College and Los Angeles Community College District Fall 1974 - Fall 2007

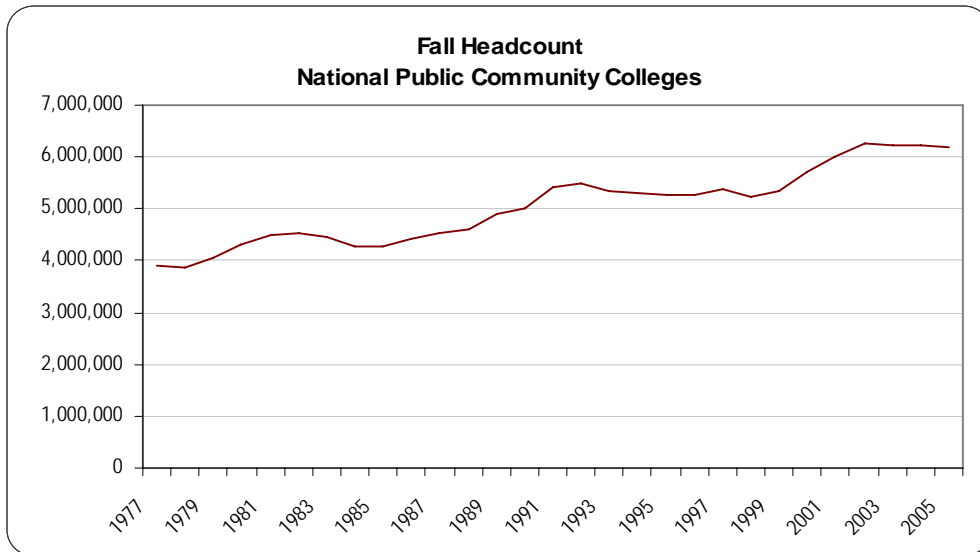
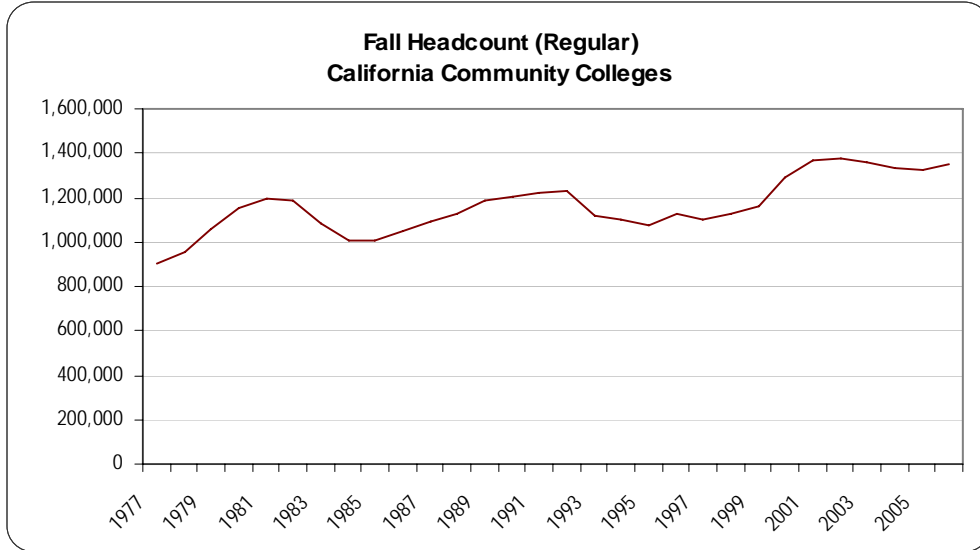


Fall	City	District	Fall	City	District	Fall	City	District
1973	19,185	108,922	1985	13,743	93,026	1997	15,275	101,647
1974	23,514	102,839	1986	14,858	103,336	1998	15,141	99,165
1975	23,904	137,031	1987	14,224	102,912	1999	15,685	102,075
1976	19,727	126,143	1988	14,973	105,678	2000	15,271	112,155
1977	19,535	129,296	1989	16,036	108,880	2001	17,095	119,433
1978	18,776	124,523	1990	16,236	111,485	2002	18,372	128,013
1979	18,701	130,896	1991	16,810	117,994	2003	16,984	122,441
1980	20,174	134,622	1992	16,877	116,251	2004	16,268	114,681
1981	20,492	139,168	1993	15,270	102,800	2005	16,306	114,701
1982	20,169	135,644	1994	15,217	101,378	2006	16,190	114,948
1983	17,568	119,569	1995	14,346	98,104	2007	16,757	120,847
1984	15,558	102,313	1996	14,354	99,358			

**Note:** Headcount is the number of individual students (unduplicated).

**Source:** The Los Angeles Community College District Office of Institutional Research and Information, <http://research.laccd.edu/research/>

## Fall Headcount State Community Colleges and National Community Colleges Fall 1977 - Fall 2006



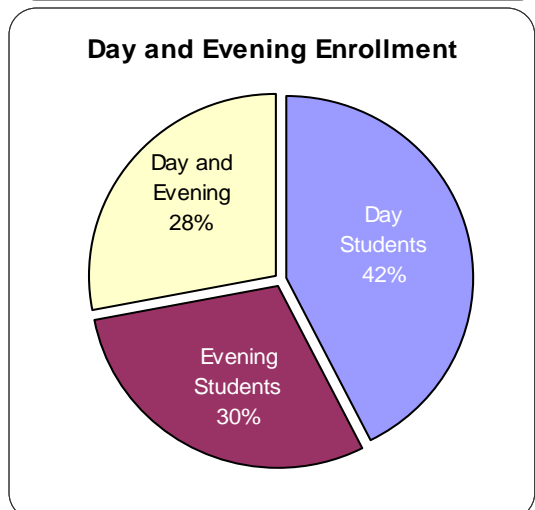
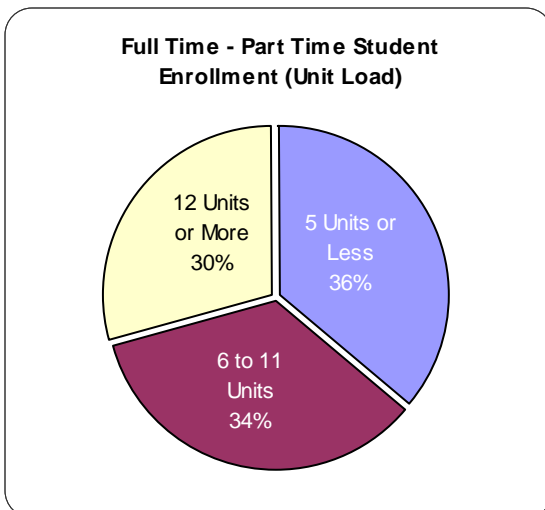
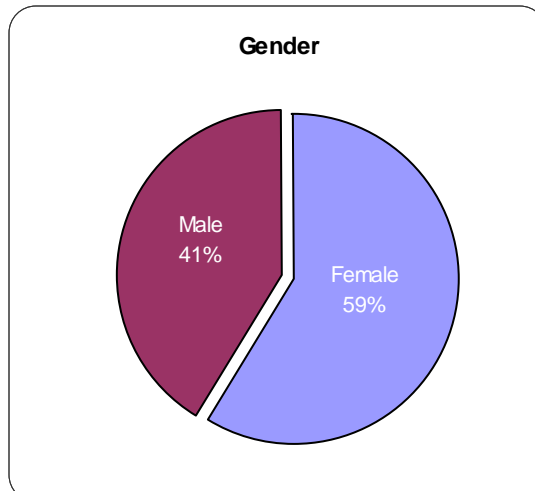
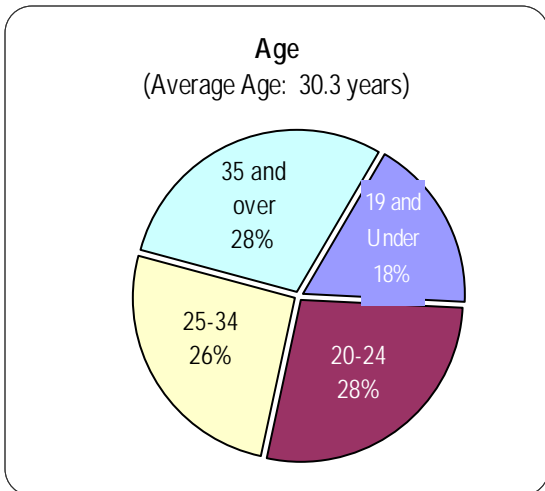
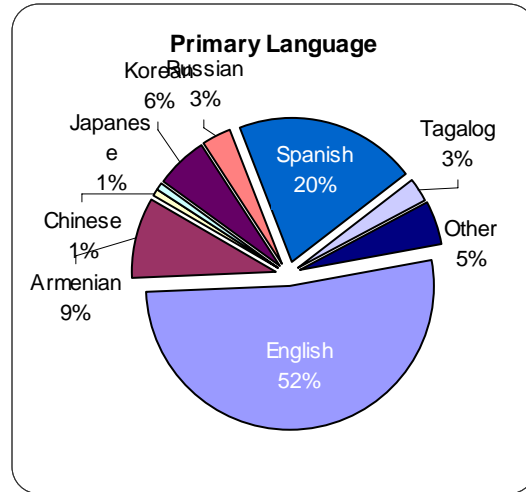
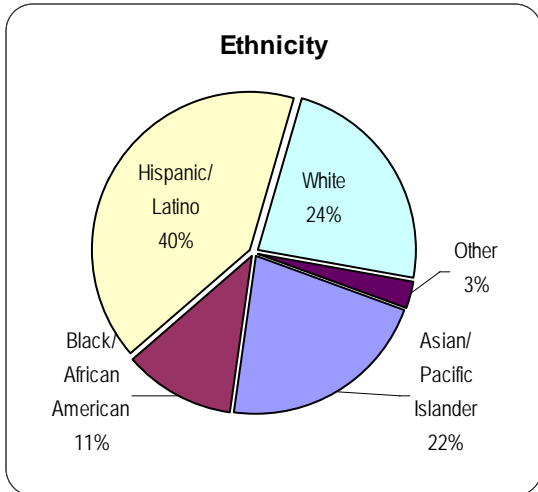
Fall	CA CC	U.S. CC	Fall	CA CC	U.S. CC	Fall	CA CC	U.S. CC
1977	901,763	3,901,769	1987	1,088,308	4,541,054	1997	1,102,552	5,360,686
1978	953,287	3,873,690	1988	1,123,820	4,615,487	1998	1,123,701	5,245,963
1979	1,062,185	4,056,810	1989	1,184,209	4,883,660	1999	1,159,952	5,339,449
1980	1,149,429	4,328,782	1990	1,204,767	4,996,475	2000	1,291,617	5,697,388
1981	1,197,685	4,480,708	1991	1,217,539	5,404,815	2001	1,371,542	5,996,701
1982	1,187,167	4,519,653	1992	1,227,173	5,484,555	2002	1,376,581	6,270,380
1983	1,083,323	4,459,330	1993	1,116,110	5,337,328	2003	1,355,060	6,209,257
1984	1,002,219	4,279,097	1994	1,101,342	5,308,467	2004	1,331,348	6,243,576
1985	1,005,439	4,269,733	1995	1,075,906	5,277,829	2005	1,326,247	6,184,229
1986	1,045,296	4,413,691	1996	1,126,507	5,283,267	2006	1,350,492	

**Sources:** California Postsecondary Education Commission (CPEC) online data:  
<http://www.cpec.ca.gov/OnLineData/OnLineData.asp>  
 and Digest of Education Statistics, 2005, Chapter 3. Postsecondary Education, National

# Student Profile

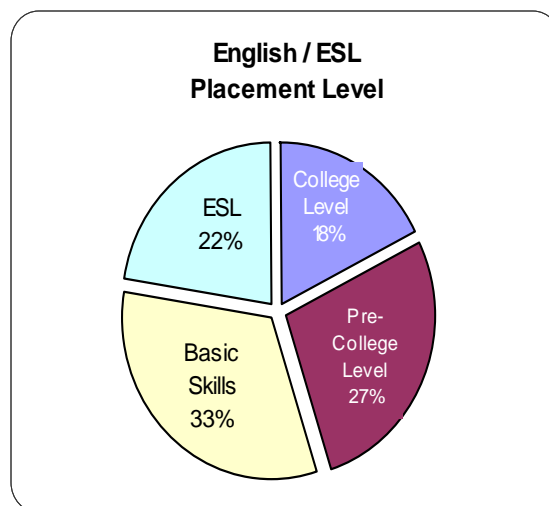
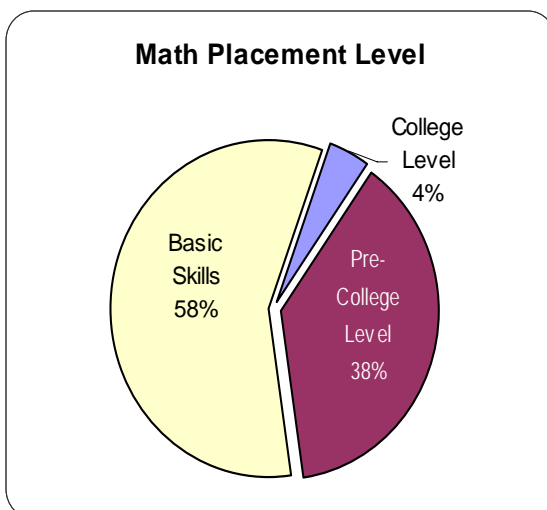
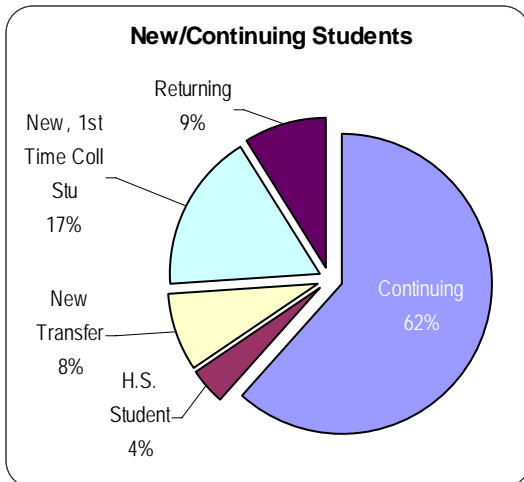
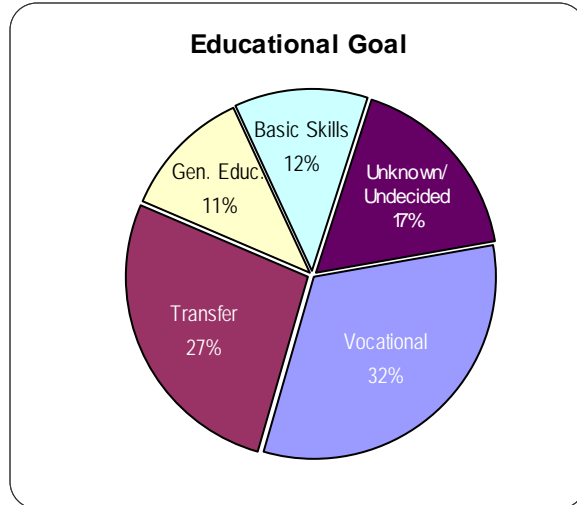
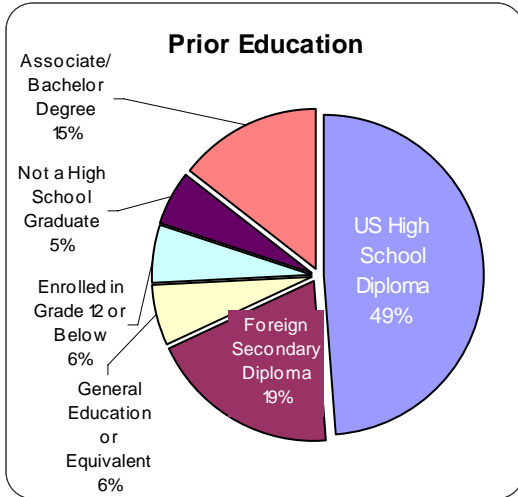
## Student Profile Fall 2006

(Headcount: 16,190)



Source: The Los Angeles Community College District Student Information System (SIS)

**Student Profile**  
**Fall 2006**  
 (Headcount: 16,190)

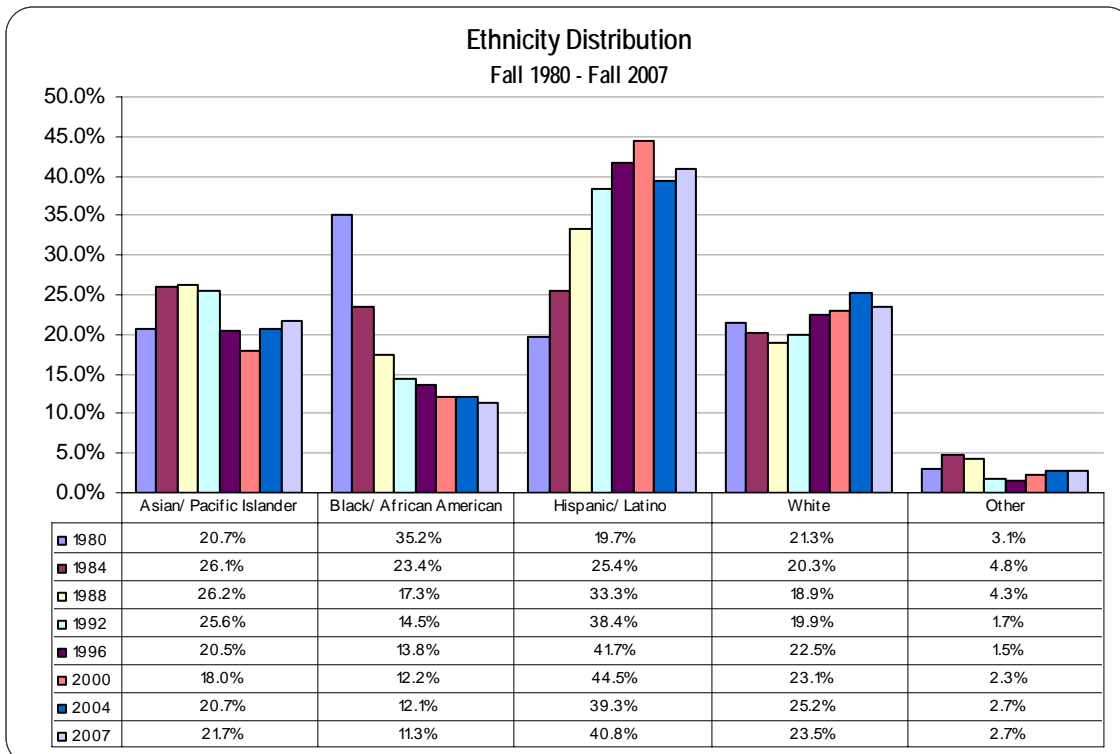


\* **Note:** See page 22 for further detail on Core Students.

**Source:** The Los Angeles Community College District Student Information System (SIS)

# Demographics

## Ethnicity Distribution Trends

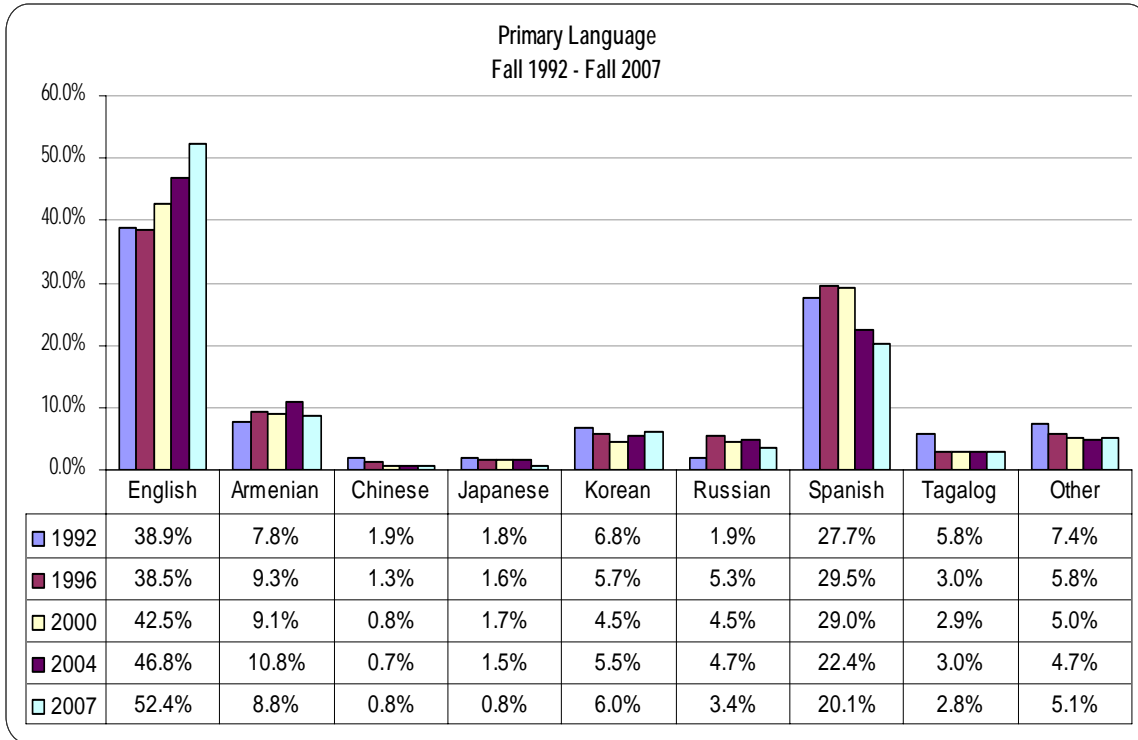


Fall	Asian/ Pacific Islander	Black/ African American	Hispanic/ Latino	White	Other	Total
1980	4,183 20.7%	7,093 35.2%	3,973 19.7%	4,306 21.3%	619 3.1%	20,174
1981	4,449 21.7%	6,352 31.0%	4,388 21.4%	4,445 21.7%	858 4.2%	20,492
1982	4,452 22.1%	5,883 29.2%	4,494 22.3%	4,456 22.1%	884 4.4%	20,169
1983	3,976 22.6%	4,893 27.9%	4,159 23.7%	3,704 21.1%	835 4.8%	17,568
1984	4,056 26.1%	3,647 23.4%	3,951 25.4%	3,151 20.3%	754 4.8%	15,558
1985	3,742 27.2%	2,872 20.9%	3,678 26.8%	2,752 20.0%	699 5.1%	13,743
1986	3,922 26.4%	2,895 19.5%	4,361 29.4%	3,012 20.3%	667 4.5%	14,858
1987	3,796 26.7%	2,661 18.7%	4,340 30.5%	2,747 19.3%	681 4.8%	14,224
1988	3,921 26.2%	2,595 17.3%	4,988 33.3%	2,830 18.9%	639 4.3%	14,973
1989	4,049 25.3%	2,584 16.1%	5,802 36.2%	2,982 18.6%	618 3.9%	16,035
1990	4,028 24.8%	2,476 15.3%	6,217 38.3%	3,111 19.2%	404 2.5%	16,236
1991	4,183 24.9%	2,494 14.8%	6,515 38.8%	3,307 19.7%	311 1.9%	16,810
1992	4,316 25.6%	2,444 14.5%	6,478 38.4%	3,360 19.9%	279 1.7%	16,877
1993	3,633 23.8%	2,212 14.5%	5,983 39.2%	3,191 20.9%	251 1.6%	15,270
1994	3,429 22.5%	2,258 14.8%	6,016 39.5%	3,270 21.5%	243 1.6%	15,217
1995	3,082 21.5%	2,097 14.6%	5,843 40.7%	3,090 21.5%	235 1.6%	14,346
1996	2,950 20.5%	1,974 13.8%	5,980 41.7%	3,231 22.5%	219 1.5%	14,354
1997	3,056 20.0%	2,035 13.3%	6,520 42.7%	3,386 22.2%	278 1.8%	15,275
1998	2,835 18.7%	1,935 12.8%	6,772 44.7%	3,307 21.8%	292 1.9%	15,141
1999	2,823 18.0%	1,911 12.2%	7,051 45.0%	3,557 22.7%	342 2.2%	15,685
2000	2,753 18.0%	1,860 12.2%	6,790 44.5%	3,522 23.1%	347 2.3%	15,271
2001	3,130 19.0%	1,997 12.1%	7,062 43.0%	3,846 23.4%	405 2.5%	16,440
2002	3,595 20.4%	2,097 11.9%	7,202 40.9%	4,282 24.3%	436 2.5%	17,612
2003	3,310 20.3%	1,928 11.8%	6,617 40.6%	4,047 24.8%	395 2.4%	16,297
2004	3,230 20.7%	1,885 12.1%	6,148 39.3%	3,938 25.2%	428 2.7%	15,629
2005	3,223 20.7%	1,956 12.5%	6,150 39.4%	3,866 24.8%	396 2.5%	15,591

**Note:** Totals exclude unknown ethnicity.

**Source:** The Los Angeles Community College District Office Student Information System (SIS).

### Primary Language Distribution Trends



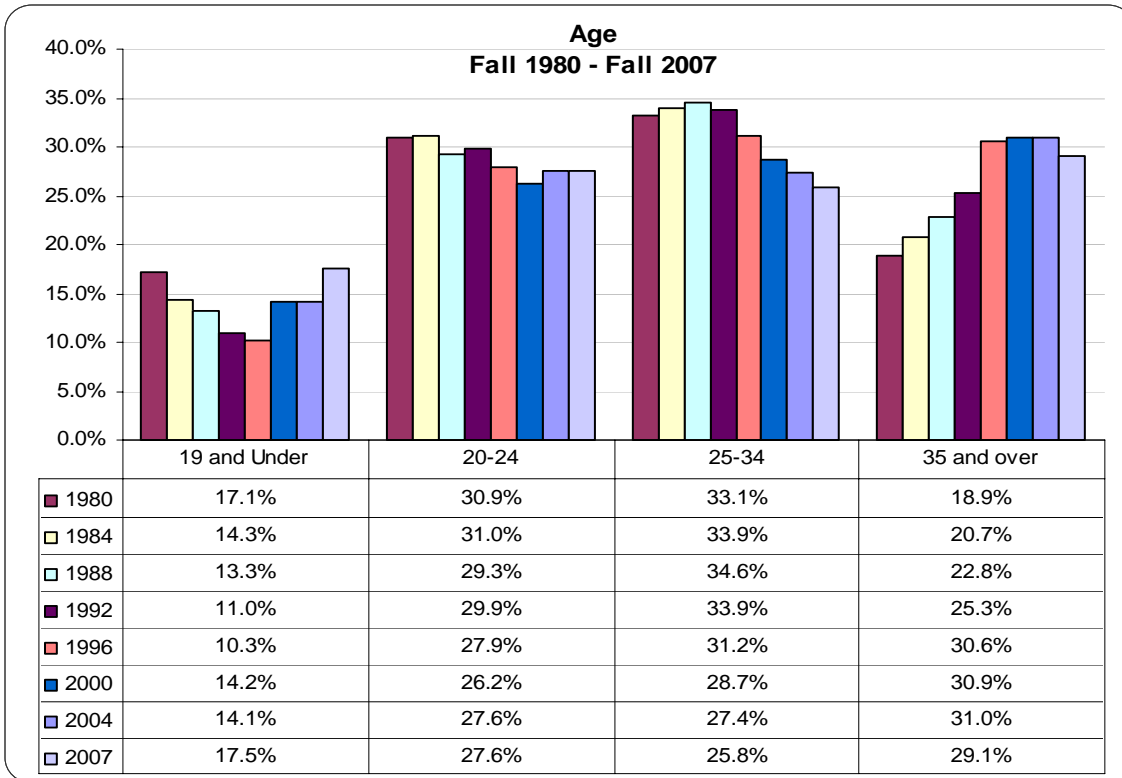
Fall	English	Armenian	Chinese	Japanese	Korean	Russian	Spanish	Tagalog	Other	Total
1992	6,558 38.9%	1,320 7.8%	326 1.9%	299 1.8%	1,152 6.8%	325 1.9%	4,680 27.7%	972 5.8%	1,246 7.4%	16,877
1993	5,789 37.9%	1,444 9.5%	296 1.9%	284 1.9%	993 6.5%	380 2.5%	4,261 27.9%	748 4.9%	1,074 7.0%	15,270
1994	5,821 38.3%	1,499 9.9%	254 1.7%	244 1.6%	1,028 6.8%	522 3.4%	4,250 27.9%	616 4.0%	982 6.5%	15,217
1995	5,590 39.0%	1,326 9.2%	208 1.4%	241 1.7%	880 6.1%	653 4.5%	4,064 28.3%	470 3.3%	913 6.4%	14,346
1996	5,521 38.5%	1,335 9.3%	189 1.3%	227 1.6%	819 5.7%	763 5.3%	4,236 29.5%	427 3.0%	839 5.8%	14,354
1997	5,826 38.1%	1,399 9.2%	181 1.2%	214 1.4%	895 5.9%	851 5.6%	4,559 29.8%	472 3.1%	877 5.7%	15,275
1998	6,040 39.9%	1,368 9.0%	129 0.9%	210 1.4%	800 5.3%	751 5.0%	4,590 30.3%	464 3.1%	790 5.2%	15,141
1999	6,468 41.2%	1,443 9.2%	115 0.7%	226 1.4%	727 4.6%	787 5.0%	4,646 29.6%	442 2.8%	830 5.3%	15,685
2000	6,496 42.5%	1,387 9.1%	121 0.8%	253 1.7%	689 4.5%	691 4.5%	4,435 29.0%	437 2.9%	762 5.0%	15,271
2001	7,396 43.8%	1,577 9.3%	140 0.8%	283 1.7%	813 4.8%	797 4.7%	4,551 26.9%	479 2.8%	869 5.1%	16,905
2002	7,960 44.0%	1,820 10.1%	145 0.8%	256 1.4%	1,223 6.8%	851 4.7%	4,489 24.8%	511 2.8%	853 4.7%	18,108
2003	7,453 44.3%	1,770 10.5%	115 0.7%	246 1.5%	982 5.8%	816 4.8%	4,105 24.4%	500 3.0%	839 5.0%	16,826
2004	7,553 46.8%	1,752 10.8%	113 0.7%	239 1.5%	882 5.5%	757 4.7%	3,618 22.4%	481 3.0%	758 4.7%	16,153
2005	7,787 48.5%	1,650 10.3%	116 0.7%	202 1.3%	735 4.6%	736 4.6%	3,497 21.8%	499 3.1%	838 5.2%	16,060
2006	8,019 50.0%	1,497 9.3%	138 0.9%	178 1.1%	812 5.1%	652 4.1%	3,441 21.5%	445 2.8%	842 5.3%	16,024
2007	8,721 52.4%	1,458 8.8%	134 0.8%	125 0.8%	1,002 6.0%	564 3.4%	3,342 20.1%	459 2.8%	852 5.1%	16,657

**Note:** Totals exclude unknown primary language. The question about Primary Language was added to the Application for Admission in Fall 1992.

**Source:** The Los Angeles Community College District Student Information System (SIS)

# Demographics

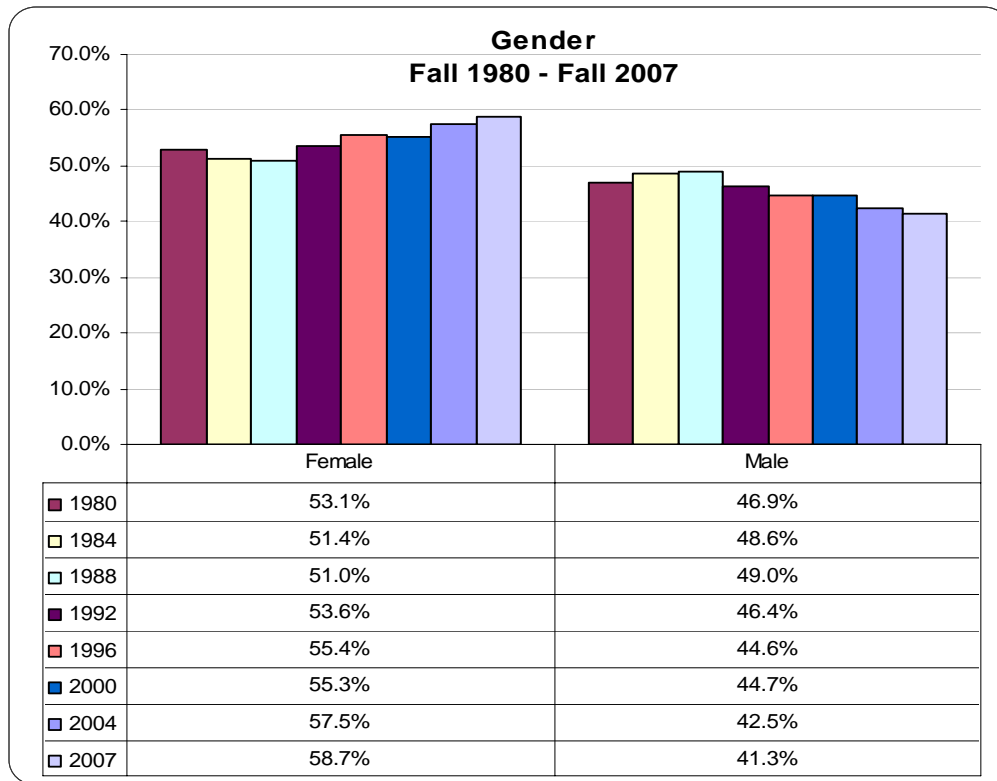
## Age Distribution Trends



Fall	19 and Under		20-24		25-34		35 and over		Total
1980	3,448	17.1%	6,227	30.9%	6,684	33.1%	3,815	18.9%	20,174
1981	3,253	15.9%	6,266	30.6%	6,986	34.1%	3,988	19.5%	20,492
1982	3,233	16.0%	6,155	30.5%	6,834	33.9%	3,947	19.6%	20,169
1983	2,768	15.8%	5,410	30.8%	6,000	34.2%	3,390	19.3%	17,568
1984	2,221	14.3%	4,829	31.0%	5,282	33.9%	3,226	20.7%	15,558
1985	1,876	13.7%	4,355	31.7%	4,696	34.2%	2,816	20.5%	13,743
1986	1,986	13.4%	4,570	30.8%	5,147	34.6%	3,155	21.2%	14,858
1987	2,102	14.8%	4,267	30.0%	4,795	33.7%	3,060	21.5%	14,224
1988	1,985	13.3%	4,392	29.3%	5,176	34.6%	3,420	22.8%	14,973
1989	1,984	12.4%	4,660	29.1%	5,514	34.4%	3,878	24.2%	16,036
1990	1,925	11.9%	4,713	29.0%	5,579	34.4%	4,020	24.8%	16,236
1991	1,926	11.5%	4,970	29.6%	5,782	34.4%	4,132	24.6%	16,810
1992	1,849	11.0%	5,043	29.9%	5,714	33.9%	4,271	25.3%	16,877
1993	1,485	9.7%	4,714	30.9%	5,087	33.3%	3,985	26.1%	15,270
1994	1,586	10.4%	4,595	30.2%	4,808	31.6%	4,228	27.8%	15,217
1995	1,484	10.3%	4,149	28.9%	4,630	32.3%	4,082	28.5%	14,346
1996	1,474	10.3%	4,008	27.9%	4,474	31.2%	4,398	30.6%	14,354
1997	1,980	13.0%	3,961	26.0%	4,478	29.4%	4,788	31.5%	15,207
1998	2,186	14.4%	3,926	25.9%	4,367	28.8%	4,662	30.8%	15,141
1999	2,271	14.7%	4,044	26.2%	4,411	28.6%	4,717	30.5%	15,443
2000	2,169	14.2%	4,003	26.2%	4,376	28.7%	4,723	30.9%	15,271
2001	2,380	13.9%	4,621	27.0%	4,819	28.2%	5,275	30.9%	17,095
2002	2,405	13.1%	4,921	26.8%	5,176	28.2%	5,872	32.0%	18,374
2003	2,373	14.0%	4,705	27.7%	4,628	27.2%	5,278	31.1%	16,984
2004	2,292	14.1%	4,490	27.6%	4,451	27.4%	5,035	31.0%	16,268
2005	2,470	15.1%	4,442	27.2%	4,419	27.1%	4,975	30.5%	16,306

Source: The Los Angeles Community College District Student Information System (SIS).

### Gender Distribution Trends

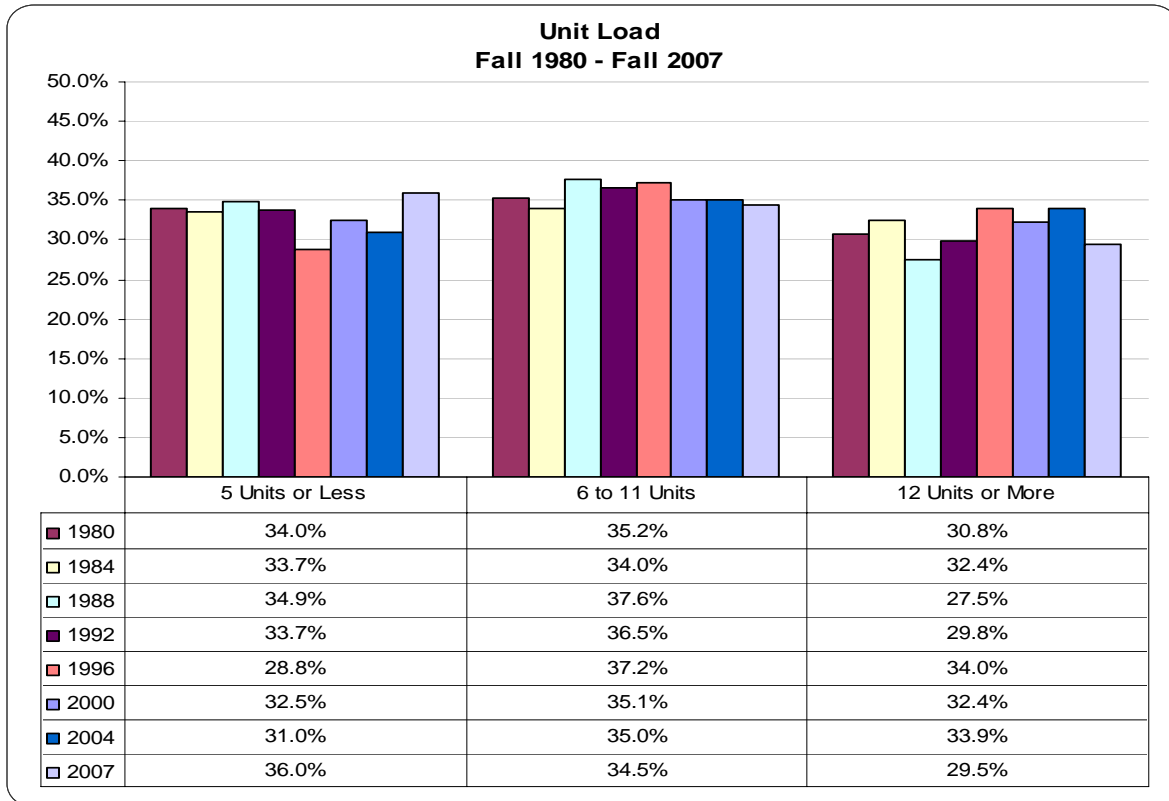


Fall	Female		Male		Total
1980	10,703	53.1%	9,471	46.9%	20,174
1981	10,583	51.6%	9,909	48.4%	20,492
1982	10,367	51.4%	9,802	48.6%	20,169
1983	9,100	51.8%	8,468	48.2%	17,568
1984	7,997	51.4%	7,561	48.6%	15,558
1985	7,016	51.1%	6,727	48.9%	13,743
1986	7,507	50.5%	7,351	49.5%	14,858
1987	7,247	50.9%	6,977	49.1%	14,224
1988	7,638	51.0%	7,335	49.0%	14,973
1989	8,197	51.1%	7,838	48.9%	16,036
1990	8,495	52.3%	7,741	47.7%	16,236
1991	8,940	53.2%	7,870	46.8%	16,810
1992	9,048	53.6%	7,829	46.4%	16,877
1993	8,107	53.1%	7,163	46.9%	15,270
1994	8,199	53.9%	7,018	46.1%	15,217
1995	7,738	53.9%	6,608	46.1%	14,346
1996	7,957	55.4%	6,397	44.6%	14,354
1997	8,683	56.8%	6,592	43.2%	15,275
1998	8,485	56.0%	6,656	44.0%	15,141
1999	8,674	55.3%	7,011	44.7%	15,685
2000	8,445	55.3%	6,826	44.7%	15,271
2001	9,545	55.8%	7,550	44.2%	17,095
2002	10,378	56.5%	7,996	43.5%	18,374
2003	9,692	57.1%	7,292	42.9%	16,984
2004	9,322	57.5%	6,894	42.5%	16,216
2005	9,503	58.3%	6,803	41.7%	16,306

Source: The Los Angeles Community College District Student Information System (SIS).

# Enrollment Data

## Unit Load Trends

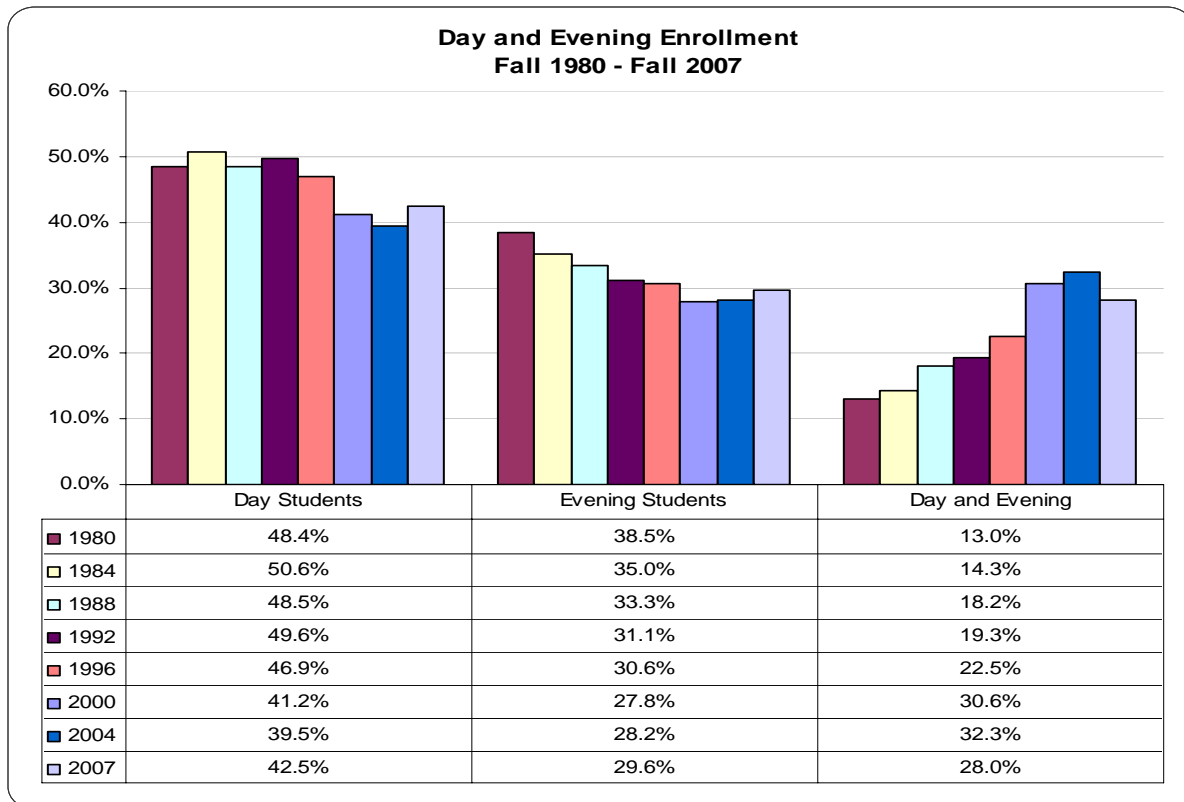


Fall	5 Units or Less		6 to 11 Units		12 Units or More		Total
1980	6,851	34.0%	7,111	35.2%	6,212	30.8%	20,174
1981	6,954	33.9%	7,242	35.3%	6,296	30.7%	20,492
1982	6,874	34.1%	7,228	35.8%	6,067	30.1%	20,169
1983	5,712	32.5%	6,321	36.0%	5,536	31.5%	17,568
1984	5,236	33.7%	5,283	34.0%	5,039	32.4%	15,558
1985	4,556	33.2%	4,732	34.4%	4,455	32.4%	13,743
1986	5,166	34.8%	5,352	36.0%	4,340	29.2%	14,858
1987	4,815	33.9%	4,974	35.0%	4,435	31.2%	14,224
1988	5,228	34.9%	5,627	37.6%	4,118	27.5%	14,973
1989	5,362	33.4%	5,959	37.2%	4,715	29.4%	16,036
1990	5,574	34.3%	5,951	36.7%	4,711	29.0%	16,236
1991	5,847	34.8%	6,096	36.3%	4,867	29.0%	16,810
1992	5,684	33.7%	6,159	36.5%	5,034	29.8%	16,877
1993	4,447	29.1%	5,724	37.5%	5,099	33.4%	15,270
1994	4,499	29.6%	5,536	36.4%	5,182	34.1%	15,217
1995	4,011	28.0%	5,256	36.6%	5,079	35.4%	14,346
1996	4,136	28.8%	5,333	37.2%	4,886	34.0%	14,354
1997	4,323	28.3%	5,285	34.6%	5,667	37.1%	15,275
1998	4,473	29.5%	5,435	35.9%	5,233	34.6%	15,141
1999	4,950	31.6%	5,449	34.7%	5,286	33.7%	15,685
2000	4,963	32.5%	5,367	35.1%	4,941	32.4%	15,271
2001	5,679	33.2%	5,980	35.0%	5,436	31.8%	17,095
2002	5,964	32.5%	6,311	34.4%	6,097	33.2%	18,372
2003	5,633	33.2%	5,833	34.3%	5,518	32.5%	16,984
2004	5,051	31.0%	5,696	35.0%	5,521	33.9%	16,268
2005	5,203	31.9%	5,629	34.5%	5,474	33.6%	16,306

**Note:** Student course load is the number of units in which a student is enrolled; used for determining full-time/part-time status.

**Source:** The Los Angeles Community College District Student Information System (SIS).

## Day and Evening Enrollment Trends

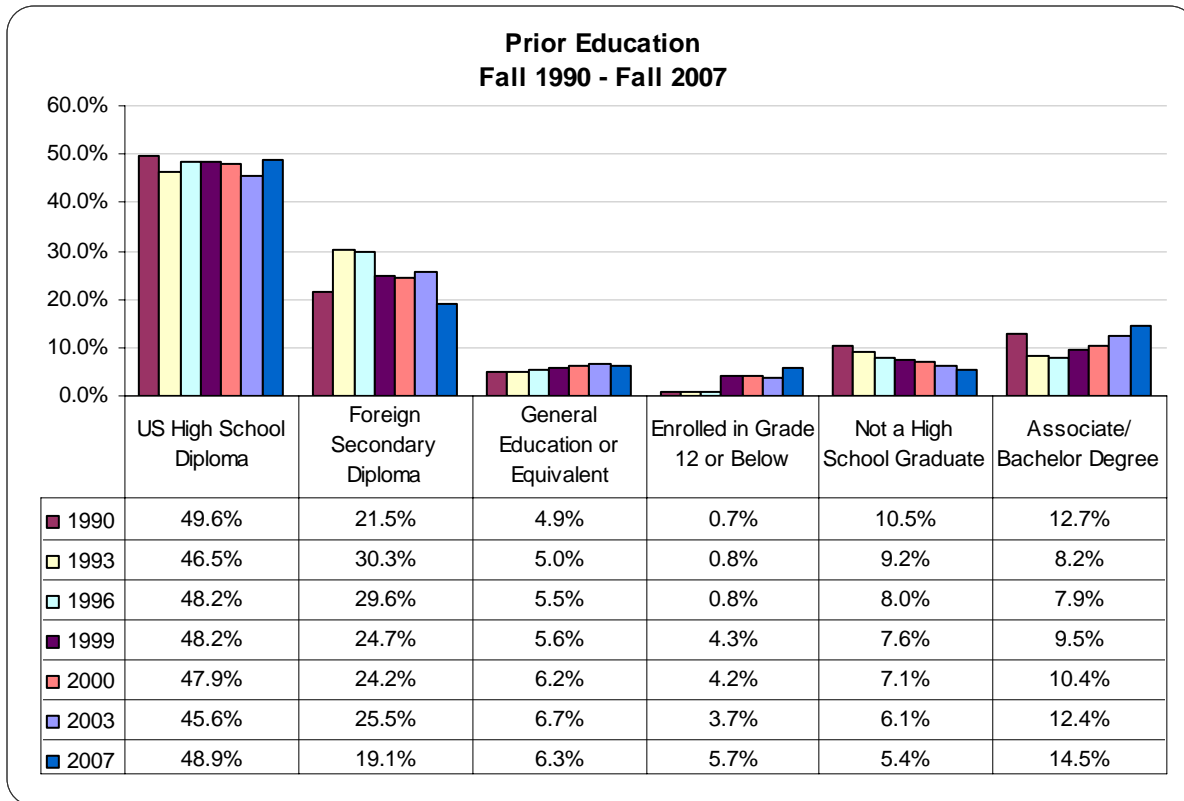


Fall	Day Students		Evening Students		Day and Evening		Total
1980	9,773	48.4%	7,769	38.5%	2,631	13.0%	20,174
1981	9,936	48.5%	7,869	38.4%	2,687	13.1%	20,492
1982	10,538	52.3%	6,938	34.4%	2,693	13.4%	20,169
1983	9,392	53.5%	5,619	32.0%	2,557	14.6%	17,568
1984	7,880	50.6%	5,452	35.0%	2,226	14.3%	15,558
1985	6,873	50.0%	4,581	33.3%	2,289	16.7%	13,743
1986	7,171	48.3%	5,088	34.2%	2,600	17.5%	14,858
1987	7,094	49.9%	4,424	31.1%	2,706	19.0%	14,224
1988	7,257	48.5%	4,991	33.3%	2,724	18.2%	14,973
1989	8,009	49.9%	4,818	30.0%	3,209	20.0%	16,036
1990	7,700	47.4%	5,722	35.2%	2,814	17.3%	16,236
1991	8,205	48.8%	5,538	32.9%	3,066	18.2%	16,810
1992	8,378	49.6%	5,242	31.1%	3,257	19.3%	16,877
1993	7,624	49.9%	4,805	31.5%	2,841	18.6%	15,270
1994	7,394	48.6%	4,673	30.7%	3,150	20.7%	15,217
1995	6,916	48.2%	4,266	29.7%	3,164	22.1%	14,346
1996	6,735	46.9%	4,385	30.6%	3,234	22.5%	14,354
1997	6,740	44.1%	4,756	31.1%	3,779	24.7%	15,275
1998	6,176	40.8%	4,841	32.0%	4,124	27.2%	15,141
1999	6,447	41.7%	4,942	32.0%	4,054	26.3%	15,443
2000	6,292	41.2%	4,245	27.8%	4,673	30.6%	15,271
2001	6,593	38.6%	5,626	32.9%	4,876	28.5%	17,095
2002	6,879	37.4%	6,061	33.0%	5,434	29.6%	18,374
2003	6,621	39.0%	5,055	29.8%	5,308	31.3%	16,984
2004	6,432	39.5%	4,588	28.2%	5,248	32.3%	16,268
2005	6,759	41.5%	4,362	26.8%	5,185	31.8%	16,306

Source: The Los Angeles Community College District Student Information System (SIS).

# Enrollment Data

## Prior Education Trends

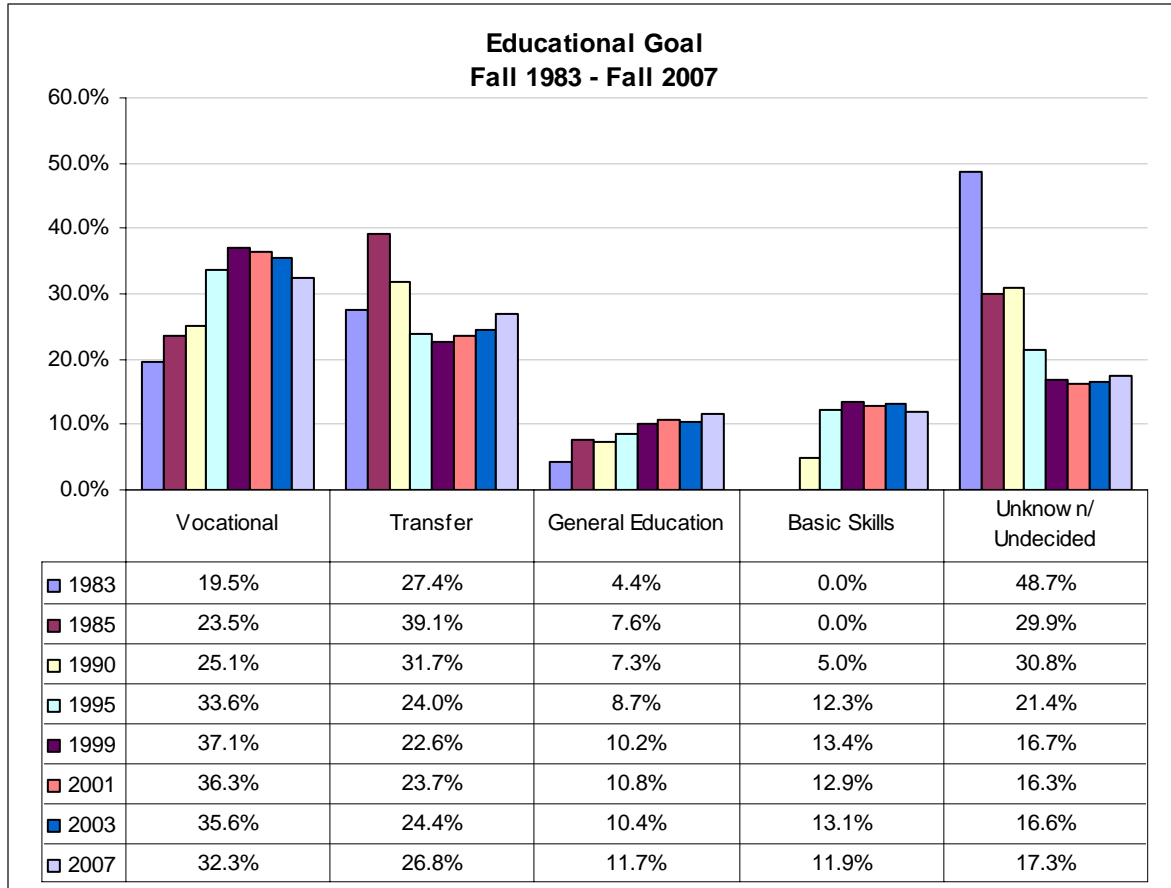


Fall	US High School Diploma		Foreign Secondary Diploma		General Education or Equivalent		Enrolled in Grade 12 or Below		Not a High School Graduate		Associate/Bachelor Degree		Total
1990	8,055	49.6%	3,485	21.5%	803	4.9%	120	0.7%	1,707	10.5%	2,067	12.7%	16,236
1991	7,738	46.0%	4,142	24.6%	817	4.9%	179	1.1%	1,713	10.2%	2,220	13.2%	16,810
1992	7,528	44.6%	4,583	27.2%	824	4.9%	207	1.2%	1,624	9.6%	2,111	12.5%	16,877
1993	7,098	46.5%	4,623	30.3%	758	5.0%	123	0.8%	1,410	9.2%	1,258	8.2%	15,270
1994	7,290	47.9%	4,675	30.7%	764	5.0%	153	1.0%	1,313	8.6%	1,022	6.7%	15,217
1995	6,911	48.2%	4,387	30.6%	811	5.7%	74	0.5%	1,138	7.9%	1,024	7.1%	14,346
1996	6,925	48.2%	4,251	29.6%	788	5.5%	113	0.8%	1,149	8.0%	1,128	7.9%	14,354
1997	7,094	46.4%	4,397	28.8%	784	5.1%	496	3.2%	1,249	8.2%	1,255	8.2%	15,275
1998	7,165	47.3%	4,077	26.9%	873	5.8%	569	3.8%	1,220	8.1%	1,237	8.2%	15,141
1999	7,450	48.2%	3,822	24.7%	865	5.6%	659	4.3%	1,180	7.6%	1,467	9.5%	15,443
2000	7,316	47.9%	3,701	24.2%	942	6.2%	634	4.2%	1,085	7.1%	1,593	10.4%	15,271
2001	7,867	46.9%	4,059	24.2%	1,131	6.7%	734	4.4%	1,165	6.9%	1,835	10.9%	16,791
2002	8,307	46.2%	4,416	24.6%	1,151	6.4%	589	3.3%	1,228	6.8%	2,277	12.7%	17,968
2003	7,215	45.6%	4,029	25.5%	1,059	6.7%	587	3.7%	970	6.1%	1,964	12.4%	15,824
2004	7,807	48.5%	3,698	23.0%	1,037	6.4%	569	3.5%	873	5.4%	2,115	13.1%	16,099
2005	7,855	49.0%	3,448	21.5%	1,061	6.6%	598	3.7%	835	5.2%	2,227	13.9%	16,024
2006	7,855	48.8%	3,299	20.5%	1,034	6.4%	836	5.2%	851	5.3%	2,234	13.9%	16,109
2007	8,144	48.9%	3,180	19.1%	1,053	6.3%	956	5.7%	904	5.4%	2,421	14.5%	16,658

Note: Totals exclude unknown prior education.

Source: The Los Angeles Community College District Student Information System (SIS).

### Educational Goal Trends



Fall	Vocational		Transfer		General Education		Basic Skills		Unknown/Undecided		Total
1983	3,426	19.5%	4,814	27.4%	773	4.4%	0	0.0%	8,556	48.7%	17,568
1985	3,230	23.5%	5,374	39.1%	1,044	7.6%	0	0.0%	4,109	29.9%	13,757
1990	4,091	25.1%	5,163	31.7%	1,185	7.3%	812	5.0%	5,017	30.8%	16,268
1995	4,820	33.6%	3,443	24.0%	1,248	8.7%	1,765	12.3%	3,070	21.4%	14,346
1999	5,819	37.1%	3,545	22.6%	1,600	10.2%	2,102	13.4%	2,619	16.7%	15,685
2001	6,204	36.3%	4,049	23.7%	1,848	10.8%	2,213	12.9%	2,781	16.3%	17,095
2002	6,466	35.2%	4,393	23.9%	2,015	11.0%	2,499	13.6%	3,001	16.3%	18,374
2003	6,038	35.6%	4,144	24.4%	1,760	10.4%	2,224	13.1%	2,818	16.6%	16,984
2004	5,659	34.8%	4,056	24.9%	1,803	11.1%	2,051	12.6%	2,699	16.6%	16,268
2005	5,751	35.3%	3,874	23.8%	1,827	11.2%	1,979	12.1%	2,875	17.6%	16,306

Source: The Los Angeles Community College District Student Information System (SIS).

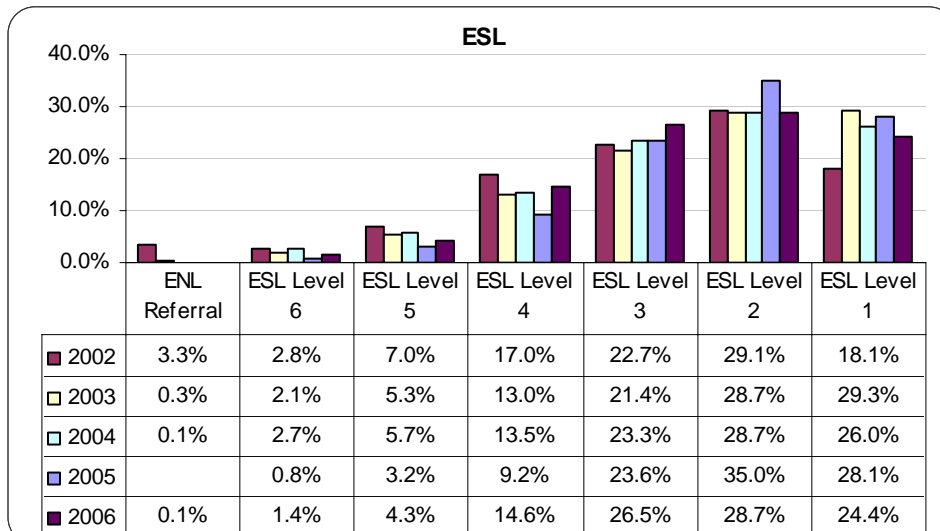
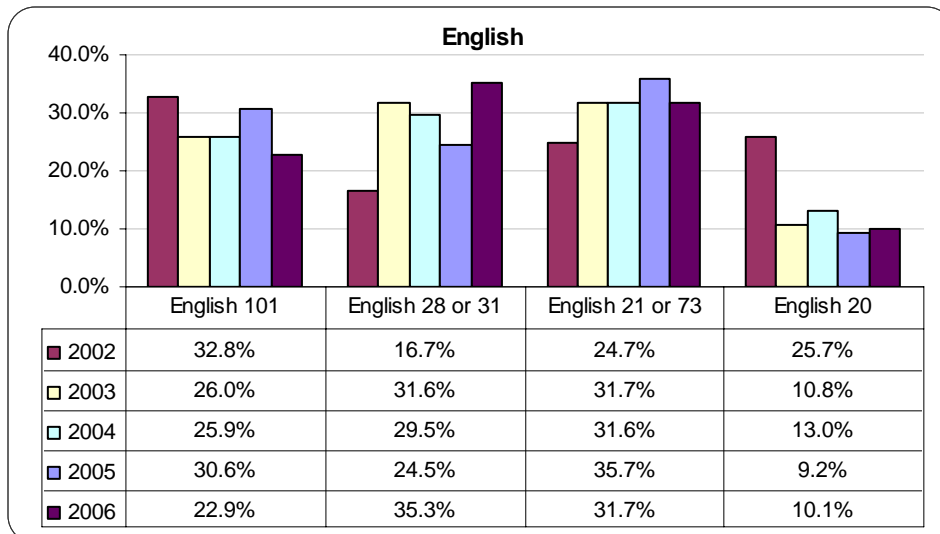
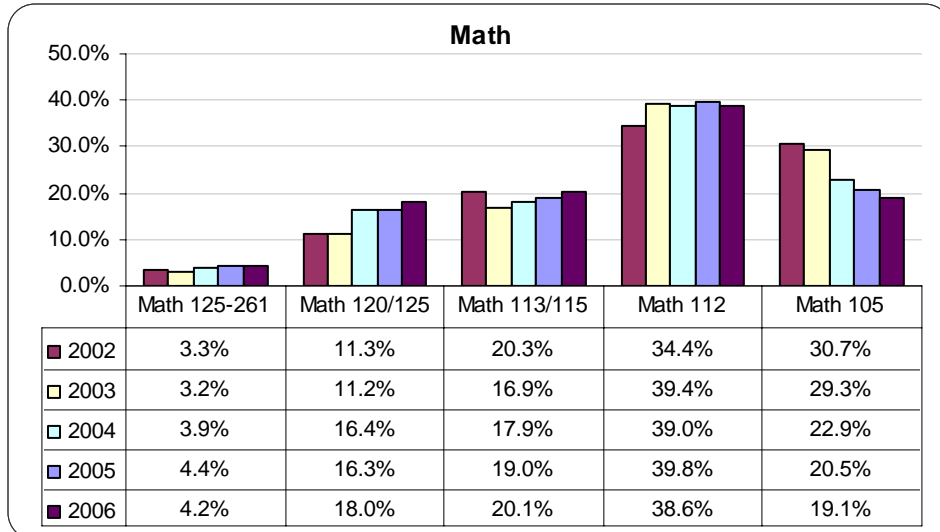
# Educational Preparation

## Assessment and Placement Summary Math, English, and ESL 2002—2006

		MATH PLACEMENT									
Course Level	Recommended Placement	2002		2003		2004		2005		2006	
College Level	Math 125-261	185	3.3%	189	3.2%	202	3.9%	223	4.4%	193	4.2%
Pre-College Level	Math 120/125	632	11.3%	661	11.2%	857	16.4%	829	16.3%	832	18.0%
Pre-College Level	Math 113/115	1,139	20.3%	1,003	16.9%	935	17.9%	966	19.0%	928	20.1%
Basic Skills	Math 112	1,931	34.4%	2,337	39.4%	2,042	39.0%	2,027	39.8%	1,784	38.6%
Basic Skills	Math 105	1,725	30.7%	1,735	29.3%	1,201	22.9%	1,045	20.5%	880	19.1%
<i>Total</i>		<i>5,612</i>	<i>100%</i>	<i>5,925</i>	<i>100%</i>	<i>5,237</i>	<i>100%</i>	<i>5,090</i>	<i>100%</i>	<i>4,617</i>	<i>100%</i>
		ENGLISH PLACE-									
Course Level	Recommended Placement	2002		2003		2004		2005		2006	
College Level	English 101	1,872	32.8%	1,359	26.0%	1,215	25.9%	1,492	30.6%	1,048	22.9%
Pre-College Level	English 28 or 31	953	16.7%	1,653	31.6%	1,385	29.5%	1,195	24.5%	1,617	35.3%
Basic Skills	English 21 or 73	1,410	24.7%	1,656	31.7%	1,480	31.6%	1,741	35.7%	1,453	31.7%
Basic Skills	English 20	1,468	25.7%	563	10.8%	610	13.0%	449	9.2%	461	10.1%
<i>Total</i>		<i>5,703</i>	<i>100.0%</i>	<i>5,231</i>	<i>100.0%</i>	<i>4,690</i>	<i>100.0%</i>	<i>4,877</i>	<i>100.0%</i>	<i>4,579</i>	<i>100.0%</i>
		ESL PLACEMENT									
Course Level	Recommended Placement	2002		2003		2004		2005		2006	
ESL	ENL Referral	69	3.3%	7	0.3%	3	0.1%			1	0.1%
ESL	ESL Level 6	58	2.8%	56	2.1%	62	2.7%	14	0.8%	19	1.4%
ESL	ESL Level 5	146	7.0%	142	5.3%	131	5.7%	55	3.2%	57	4.3%
ESL	ESL Level 4	354	17.0%	351	13.0%	312	13.5%	157	9.2%	193	14.6%
ESL	ESL Level 3	473	22.7%	579	21.4%	539	23.3%	401	23.6%	352	26.5%
ESL	ESL Level 2	607	29.1%	774	28.7%	664	28.7%	596	35.0%	380	28.7%
ESL	ESL Level 1	377	18.1%	792	29.3%	601	26.0%	478	28.1%	324	24.4%
<i>Total</i>		<i>2,084</i>	<i>100.0%</i>	<i>2,701</i>	<i>100.0%</i>	<i>2,312</i>	<i>100.0%</i>	<i>1,701</i>	<i>100.0%</i>	<i>1,326</i>	<i>100.0%</i>

Source: The Los Angeles Community College District Student Information System (SIS)

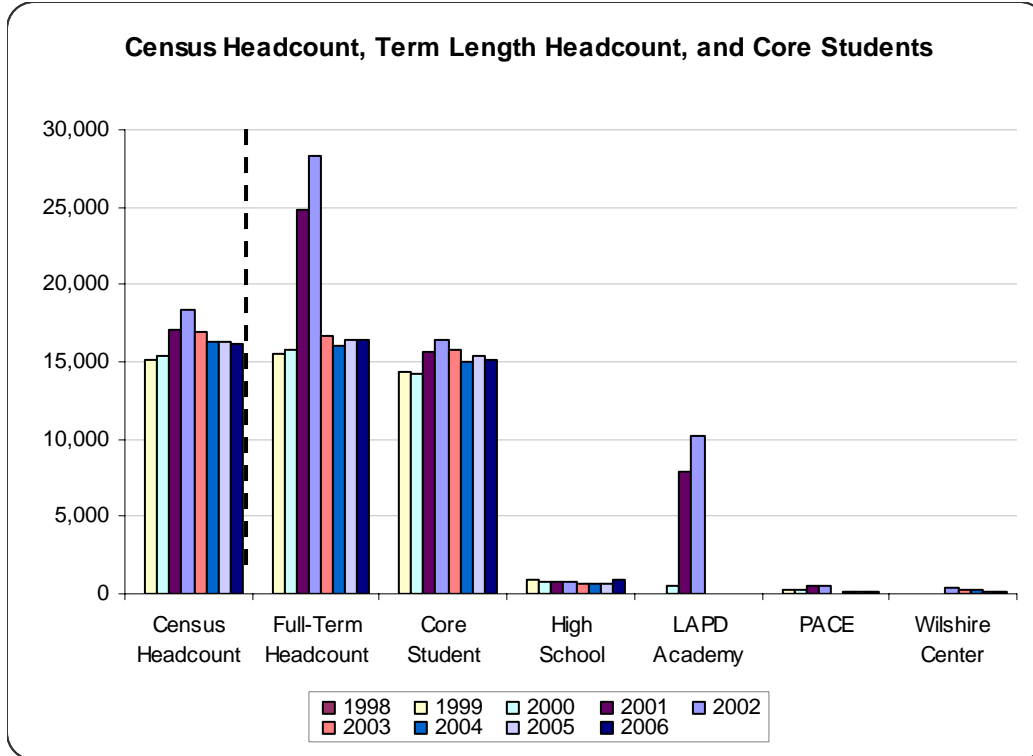
## Assessment and Placement Summary Math, English, and ESL 2002—2006



# Core Students

## Census Headcount, Full-Term Headcount, and Core Students

Fall 1998 - Fall 2006



Fall	Census Headcount	Full-Term Headcount	Core Student	High School Student	LAPD Academy Program	PACE	Wilshire Center
1998	15,141	15,554 100.0%	14,389 92.5%	943 6.1%	0 0.0%	222 1.4%	0 0.0%
1999	15,443	15,815 100.0%	14,287 90.3%	760 4.8%	493 3.1%	275 1.7%	0 0.0%
2000	15,271	16,235 100.0%	14,212 87.5%	732 4.5%	973 6.0%	318 2.0%	0 0.0%
2001	17,095	24,815 100.0%	15,598 62.9%	780 3.1%	7,915 31.9%	522 2.1%	0 0.0%
2002	18,372	28,255 100.0%	16,377 58.0%	726 2.6%	10,188 36.1%	519 1.8%	445 1.6%
2003	16,984	16,710 100.0%	15,775 94.4%	654 3.9%	0 0.0%	0 0.0%	281 1.7%
2004	16,268	16,041 100.0%	15,017 93.6%	662 4.1%	0 0.0%	72 0.4%	290 1.8%
2005	16,306	16,403 100.0%	15,429 94.1%	707 4.3%	0 0.0%	114 0.7%	153 0.9%
2006	16,190	16,431 100.0%	15,167 92.3%	913 5.6%	0 0.0%	158 1.0%	193 1.2%

**Definitions:**

- 1) Full-Term Headcount A count of students enrolled at any time during a term who received a grade or other transcriptable notation, including W.
- 2) Core Student Those students who are not enrolled in specialized academic programs, including PACE, the LAPD Academy program, and concurrently enrolled high school students. Core students are reported as a 'full term headcount,' which includes all students who received a grade or other transcriptable notation, including W.

**Source:** The Los Angeles Community College District Attendance Accounting Office, The Los Angeles Community College District Student Information System (SIS)