

**Los Angeles
City College**

TRiO

Student Support Services

Volume 3, Issue 1

Sept./Oct. 2009

INSIDE THIS ISSUE:

Day at LMU	2
Computer Usage	2
TAP/TAG/Printing	2
Field Trips	3
Workshops	3
Important Dates	3
Scholarships	4

TRiO
STUDENT SUPPORT SERVICES

YOUR STUDENT RESPONSIBILITY FOR FALL 2009

- 2 Counseling Contacts
- 1 Workshop or Field trip
- Maintain 2.0 GPA or higher
- Enroll in 9 units or more (6 units for OSS students)
- Seek tutoring early

Counselor's Message

Welcome to all new and continuing program participants. As we begin the new semester, campus construction is still in full gear. Please keep in mind that walkways will change weekly, if not daily. As a friendly reminder, keep your eyes and ears open while navigating through the campus.

As many of you may know by now, the program is in transition of a new program Director/Counselor. Please be patient as final arrangements are being made. I will continue to serve as the counselor until that process is finalized. So please stop by the office and schedule your appointment.

Now, to other updates. The workshops and field-trips have been planned and we would like for you to sign-up as soon as possible so you can secure your spot. Refer to page 3 of the newsletter to view the schedules.

Also, those of you who are planning to transfer for fall 2010, keep in mind that you need to follow your educational plan and complete all general education and major preparatory courses. Since being admitted to both the CSU and UC system is getting more competitive due to the budget crisis.

The transfer application process begins this fall semester.

Attend a university application workshop so you can become familiar with the process.

Remember, if you have any questions feel free to stop by the office and schedule an appointment with me.

Wishing you a successful semester,

Mirna Najera
Adjunct Counselor

Math Tutoring

We are glad to announce that we will continue to have Aiken Lehn as our math tutor in the fall. Aiken is working towards his M.A. in math at CSULA and has been with us for over two years. Many of you have shared that

Aiken's assistance has helped you be more successful in your math classes. In addition, many of you expressed for us to offer more tutoring hours throughout the week. His math tutoring schedule is the following:

Mon. & Wed.
12:00pm — 5:00pm
Tues. & Thurs.
12:00pm — 6:30pm
Please schedule your 30 minute appointment at the front desk.

Day @ Loyola Marymount University

Great News!!!

Loyola Marymount University is providing LACC students the opportunity to visit their campus for the day. You will have the opportunity to tour the campus, do a class visit, receive information regarding admissions, articulation and financial aid. Also, a Student Life Panel will provide campus information such as, student housing, student services and student leadership and development.

Transportation & lunch will be provided.

When: Sept 25th & Oct 23

Time: 9am-3pm

Please sign up at the Transfer Center located in Cesar Chavez Administration Building Room 109.

(A minimum of 30 students needed for sign up.)



Computer Usage

Laptops will continue to be available on a first come first serve basis for all enrolled active students in the fall semester. Laptops will be available beginning **September 10th**.

Laptop check out day is every **Thursday** and must be returned the following **Monday**. To check out a laptop please see Jesus Gomez.

"Laptops will be available starting September 10th"

Also, use the workstations in the computer lab for educational, appropriate usage. Don't forget to log-in and log-out every time you use a computer in the lab.



TAP

You can now purchase the TAP (Transit Access Pass) at the Business Office for \$15.00. Replacement is \$5.00 more. A student must be enrolled in 12 units (6 units for OSS students) to purchase the pass. Metro has reduced fare programs, so visit: http://www.metro.net/riding_metro/riders_guide/paying_fare-06.htm

TAG

Want guarantee admission to a UC campus for fall 2010? With a Transfer Admission Guarantee (TAG) you will secure a spot to some UC's. Contact the Transfer Center located in AD-109 to prepare your TAG. It requires the completion of: 30 UC-transferable semester units, 2.8-3.10 GPA. Begin process on Sept 1.

Paper

Please be cautious of the amount of printing and copying you are doing in the lab. The limit is 5 sheets of printing and 5 sheets of copies per day. This will help prevent from running out of paper. If all of us do not do our part to conserve paper we will have to eliminate this service.

Field Trips

University of California, Los Angeles (UCLA)

Friday, October 23

Meet at Breezeway: 8:00 am

Return to LACC: 2:30 pm

San Diego State University (SDSU)

& Belmont Park

Friday, November 6

Meet at Breezeway: 7:00 am

Return to LACC: 6:00 pm

California State University, Long Beach (CSULB)

TBA

Meet at Breezeway: ?

Return to LACC: ?

California State University, Los Angeles (CSULA) & Japanese American National Museum

Friday, October 30

Meet at Breezeway: 8:00 am

Return to LACC: 2:30 pm

California State Universities

www.csumentor.edu

Open Winter 2010:

CSU Bakersfield

(For selected majors)

OPEN Spring 2010

CSU Bakersfield

(For selected majors)

Application Filing Period For Fall 2010

October 1— November 31

Workshops

"All workshops are held in the TRIO/SSS lab located in Clausen Hall room 116"

"Financial Aid"

Q & A for financial aid.

Wednesday, Sept. 30 at 2:00 pm

"CSU On-line Application"

Application review.

Tuesday, Oct. 6 at 1:00 pm

"How to take Lecture Notes"

Improve your study skills.

Monday, Oct.. 12 at 1:00 pm

"How to Manage your Money"

Learn to balance your expenses.

Thursday, Oct 22 at 5:00 pm

"UC On-line Application"

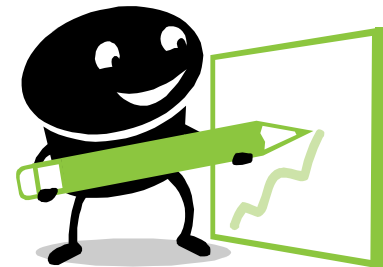
Application overview and what to include in your personal statement.

Tuesday, Nov. 3 at 1:00 pm

Time Management

Learn to use time wisely.

Thursday, Nov. 19 at 5:00pm



Important Dates

Last Day To:

Add classes: Sat., Sept. 12

Drop w/ refund: Mon., Sept 14

Drop w/o owe fee: Mon., Sept 14

Drop w/o "W": Fri., Sept 25

Drop with "W": Fri., Nov 20

File for Credit/No Credit:

Fri., Sept 25

Fall Semester Begins:

Monday, Aug. 31

File for June 2010 graduation:

Beginning Sept. 21- Nov 25

Purchase Fall parking permits:

1st weeks of fall semester

College CLOSED:

Labor Day:

Mon., Sept. 7

Veterans Day:

Mon., Nov. 11

Thanksgiving Holiday:

Nov. 26 — 27



Los Angeles
City College

Fall Office Hours:

Mon.—Thurs. 8:30 am—7:00 pm
Fri. 8:30 am—1:00 pm
(subject to change)

We are on the web!
<http://www.lacitycollege.edu/services/triosss/index.html>

TRIO Student Support Services

Los Angeles City College

Clausen Hall Room 116

855 N. Vermont Ave.

Los Angeles CA 90029

(323) 953-4000 x 2466

MISSION

TRIO Student Support Services at Los Angeles City College, are committed to improve and enhance student's successful accomplishment of academic goals through the encouragement of life-long learning and academic excellence.

HISTORY

Student Support Services is a federally funded grant program through the Department of Education that began serving LACC students in spring 1997.

Think it! Know it! Do it!

Scholarships

It's a new academic year to start searching for many scholarship opportunities that will be out there. Those students planning to transfer for fall 2009, the time is now to begin doing your scholarship hunting homework. Keep an eye on scholarship announcements on campus and visit websites at the four-year universities that you intend to apply. Check our office scholarship bulletin regularly for further information. You will find monthly scholarship opportunities and links to help you in your search. Here are a few scholarships you may be eligible to apply:

National Hispanic Scholarship Fund Eligibility: High school or full-time community college, four year college, and graduate school students who are at least half Hispanic

U.S. citizens or permanent residents. Undergrads must have a minimum 3.0 GPA, and have completed a minimum 15 semester credits. Awards based on financial need, community involvement and achievement. Applications are only available August 3 through October 9. Award: \$1,000; renewable; www.hsf.net, e-mail: info@hsf.net;

Deadline: October 15



Stanley E. Jackson Scholarship Eligibility: Disabled, minority

students who are gifted in general intellectual ability, specific academic aptitude, creativity, visual or performing arts, full-time college student, complete application. Award: \$1,000 Fax: (703) 264-9494 www.cec.sped.org/index.html

Deadline: November 1

Susan Bunch Memorial Scholarship In memory of Susan Bunch, a Learning Disabilities Specialist from West Valley College. Awarded to a student with a learning disability who is pursuing a college degree. Eligibility: Have a grade point average of at least 2.5, enrolled in at least six undergraduate semester units. Award: \$1000 <http://www.caped.net/index.html>

Deadline: September 19